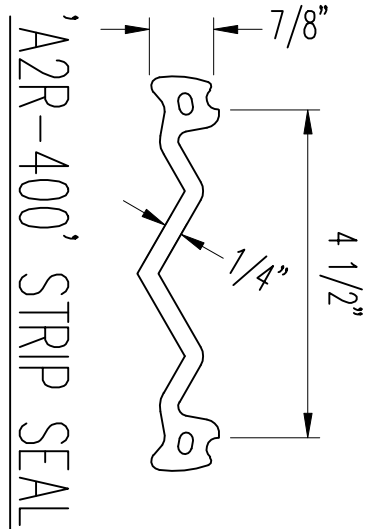


'SSA2' FRAME RAIL
ASTM A588 OR A36

		JOINT OPENING - 'W'						
MODEL	MIN.	MAX.	40°	50°	60°	70°	80°	90°
A2R-400	1/2"	4 1/2"	3"	2 3/4"	2 1/2"	2 3/16"	1 15/16"	1 5/8"

'SSA2' CROSS SECTION
GALVANIZE ASSEMBLIES TO ASTM-A123, AFTER FABRICATION

NOTE: JOINT OPENINGS ARE BASED ON THE FULL MOVEMENT RATING AND A TEMPERATURE RANGE OF 150° FOR A NON-SKEWED JOINT. ACTUAL SPAN LENGTHS AND OTHER FACTORS MAY AFFECT THESE OPENINGS.



'A2R-400' STRIP SEAL

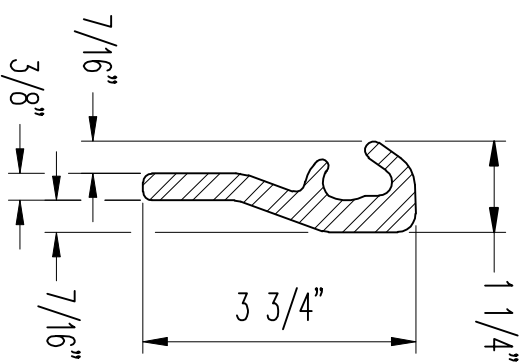
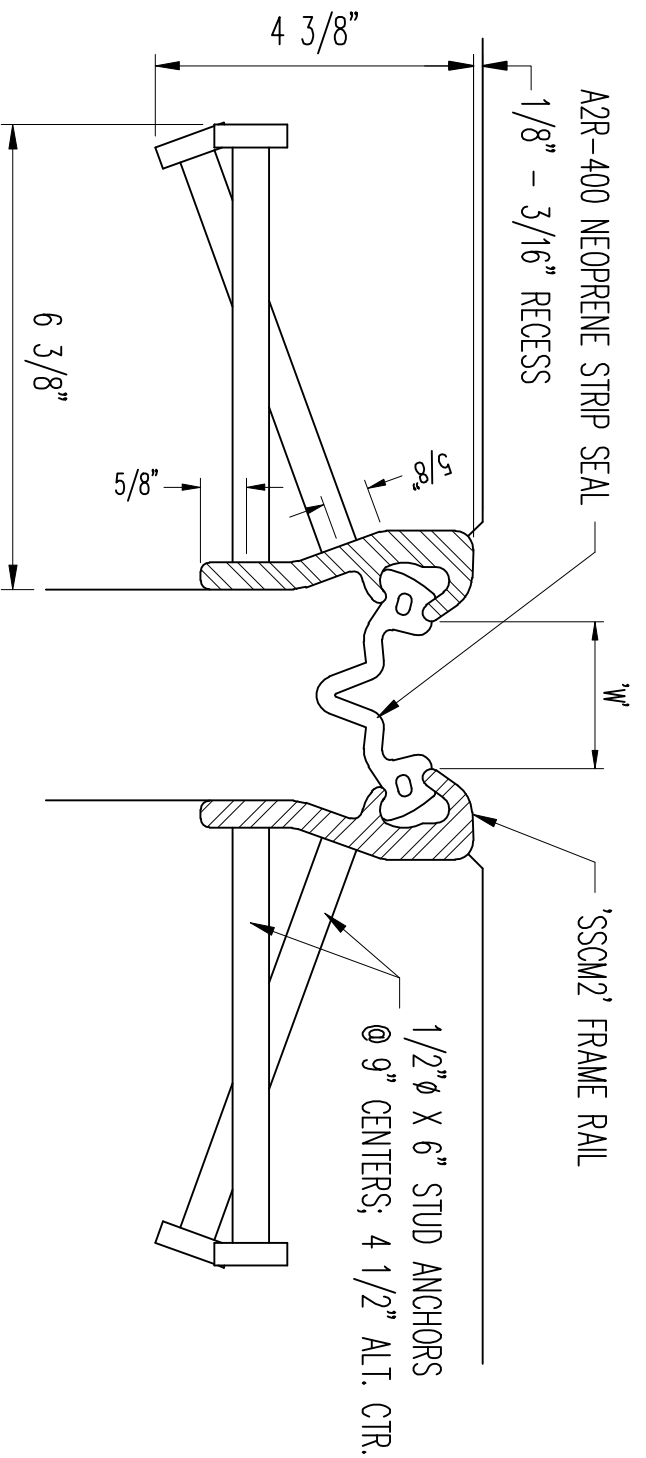
MI-APPROVED-SEL.dwg - SSA2

300 EAST CHERRY STREET
NORTH BALTIMORE, OHIO 45872
PH 419-257-3561 / FX 419-257-2200
WWW.DSBROWN.COM



D.S. BROWN

SSA2 EXPANSION JOINT



'SSCM2' CROSS SECTION

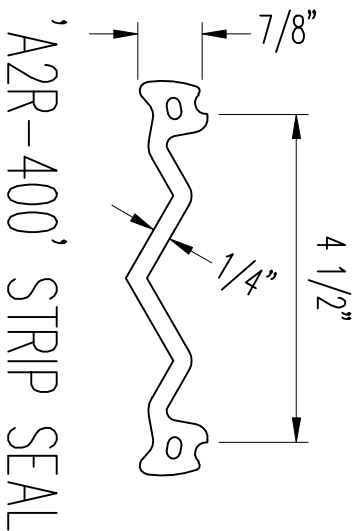
GALVANIZE ASSEMBLIES TO ASTM-A123, AFTER FABRICATION

'SSCM2' FRAME RAIL

ASTM A588 OR A36

JOINT OPENING - 'W'								
MODEL	MIN.	MAX.	40°	50°	60°	70°	80°	90°
A2R-400	1/2"	4 1/2"	3"	2 3/4"	2 1/2"	2 3/16"	1 15/16"	1 5/8"

NOTE: JOINT OPENINGS ARE BASED ON THE FULL MOVEMENT RATING AND A TEMPERATURE RANGE OF 150° FOR A NON-SKEWED JOINT. ACTUAL SPAN LENGTHS AND OTHER FACTORS MAY AFFECT THESE OPENINGS.

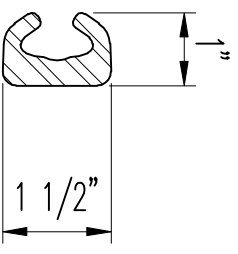
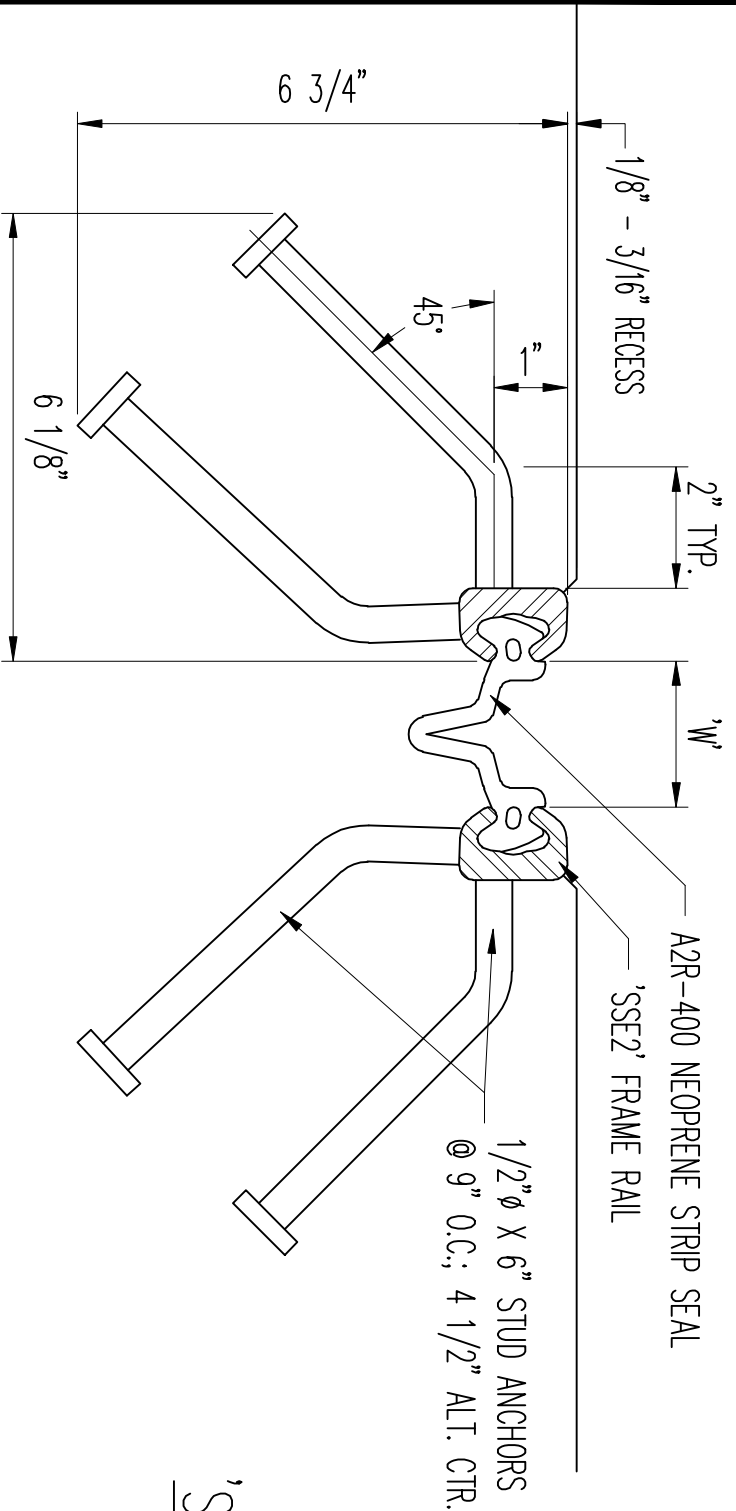


'A2R-400' STRIP SEAL

MI-APPROVED-SEJ.dwg - SSCM2



SSCM2 EXPANSION JOINT

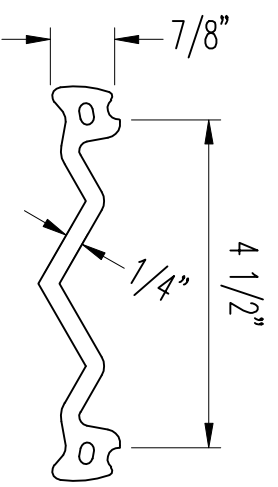


'SSE2' FRAME RAIL
ASTM A538 OR A36

'SSE2' CROSS SECTION
GALVANIZE ASSEMBLIES TO ASTM-A123, AFTER FABRICATION

JOINT OPENING - 'W'		
MODEL	MIN.	MAX.
A2R-400	1 1/2"	4 1/2"
	40°	50°
	60°	70°
	80°	90°

NOTE: JOINT OPENINGS ARE BASED ON THE FULL MOVEMENT RATING AND A TEMPERATURE RANGE OF 150° FOR A NON-SKEWED JOINT. ACTUAL SPAN LENGTHS AND OTHER FACTORS MAY AFFECT THESE OPENINGS.



'A2R-400' STRIP SEAL

MI-APPROVED-SEJ.dwg - SSE2

300 EAST CHERRY STREET
NORTH BALTIMORE, OHIO 45872
PH 419-257-3561 / FX 419-257-2200
D.S. BROWN
www.dsbrwn.com

SSE2 EXPANSION JOINT