

PLAN VIEW



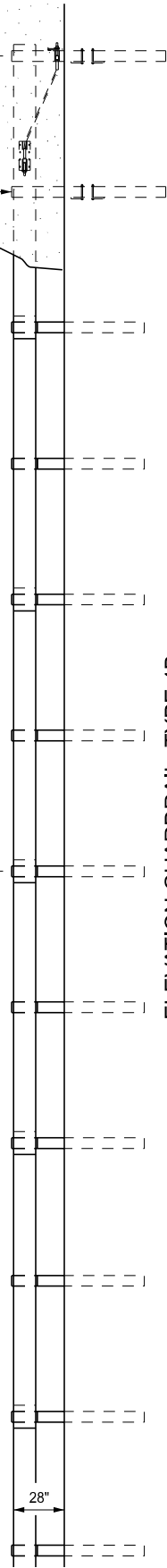
FLARE RATES	
DESIGN SPEED (mph)	FLARE
30	7:1
40	8:1
50	11:1
60	14:1
70	15:1

FLARE RATE CAN BE REDUCED TO 8:1 BETWEEN THE FORESLOPE / BACKSLOPE INTERCEPT AND THE BACKSLOPE.

37'-6" GUARDRAIL ANCHORED IN BACKSLOPE TYPE 4B

6" MIN TYP FOR BURIED POSTS SEE NOTES

BURY TWO POSTS (MINIMUM)

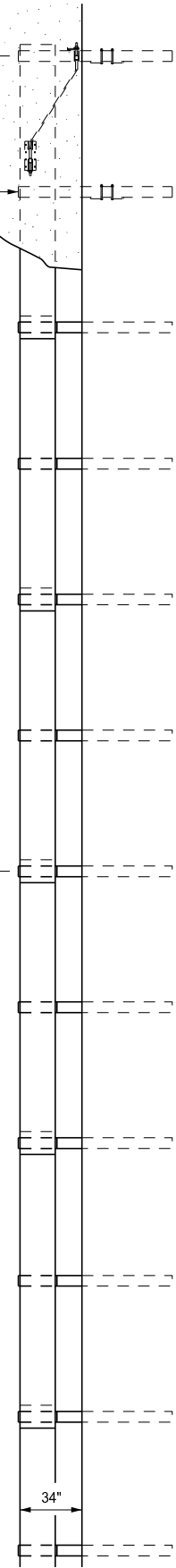


ELEVATION GUARDRAIL, TYPE 4B

37'-6" GUARDRAIL ANCHORED IN BACKSLOPE TYPE 4T

6" MIN. TYP. FOR BURIED POSTS SEE NOTES

BURY TWO POSTS (MINIMUM)



ELEVATION GUARDRAIL, TYPE 4T

APPROVED BY: _____
DIRECTOR, BUREAU OF FIELD SERVICES

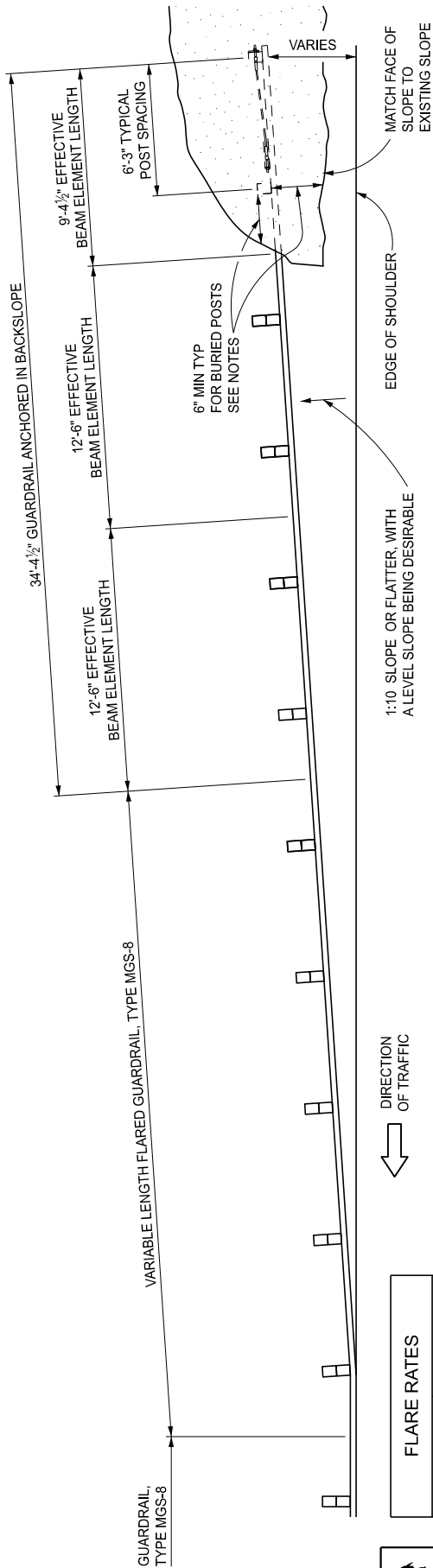
APPROVED BY: _____
DIRECTOR, BUREAU OF DEVELOPMENT

MDOT
Michigan Department of Transportation

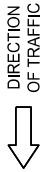
DEPARTMENT DIRECTOR
BRADLEY C. WIEFERICH, PE

SPECIAL DETAIL FOR
GUARDRAIL ANCHORED IN BACKSLOPE
TYPES 4B, 4T, & 4MGS-8

(SPECIAL DETAIL)	03/17/2026	SPECIAL DETAIL 24	SHEET 1 OF 8
FHWA APPROVAL	PLAN DATE		

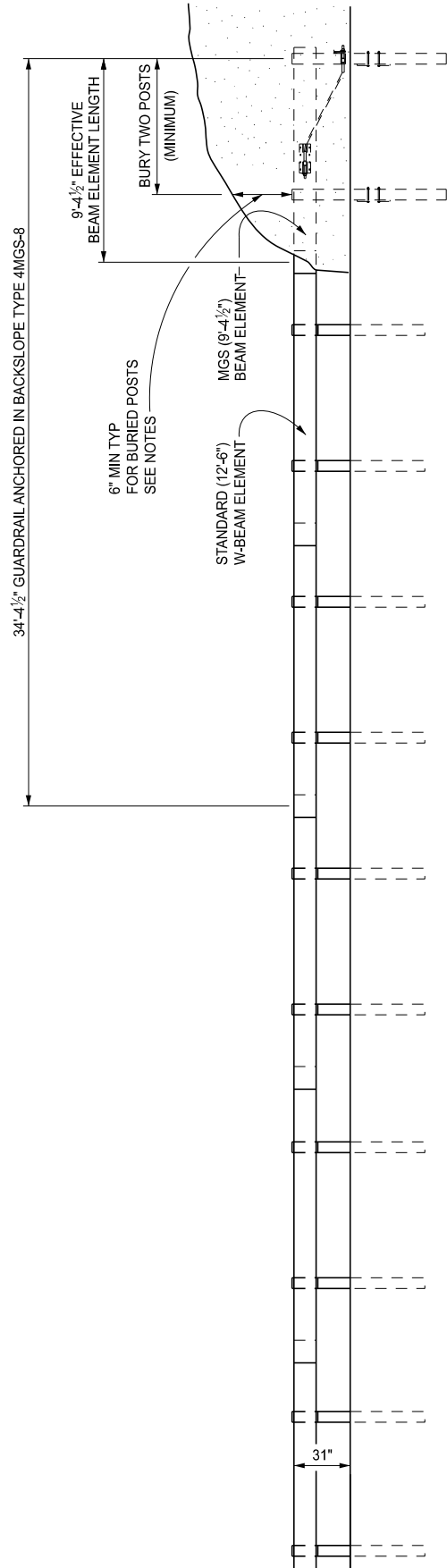


PLAN VIEW



FLARE RATES	
DESIGN SPEED (mph)	FLARE
30	7:1
40	8:1
50	11:1
60	14:1
70	15:1

FLARE RATE CAN BE REDUCED TO 8:1 BETWEEN THE FORESLOPE / BACKSLOPE INTERCEPT AND THE BACKSLOPE.



ELEVATION GUARDRAIL, TYPE 4MGS-8



DEPARTMENT DIRECTOR
BRADLEY C. WIEFERICH, PE

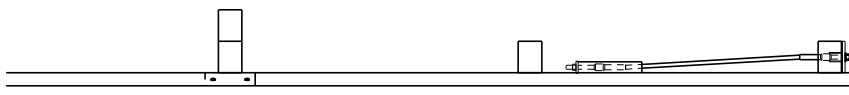
SPECIAL DETAIL FOR
GUARDRAIL ANCHORED IN BACKSLOPE
TYPES 4B, 4T, & 4MGS-8

(SPECIAL DETAIL)
FHWA APPROVAL

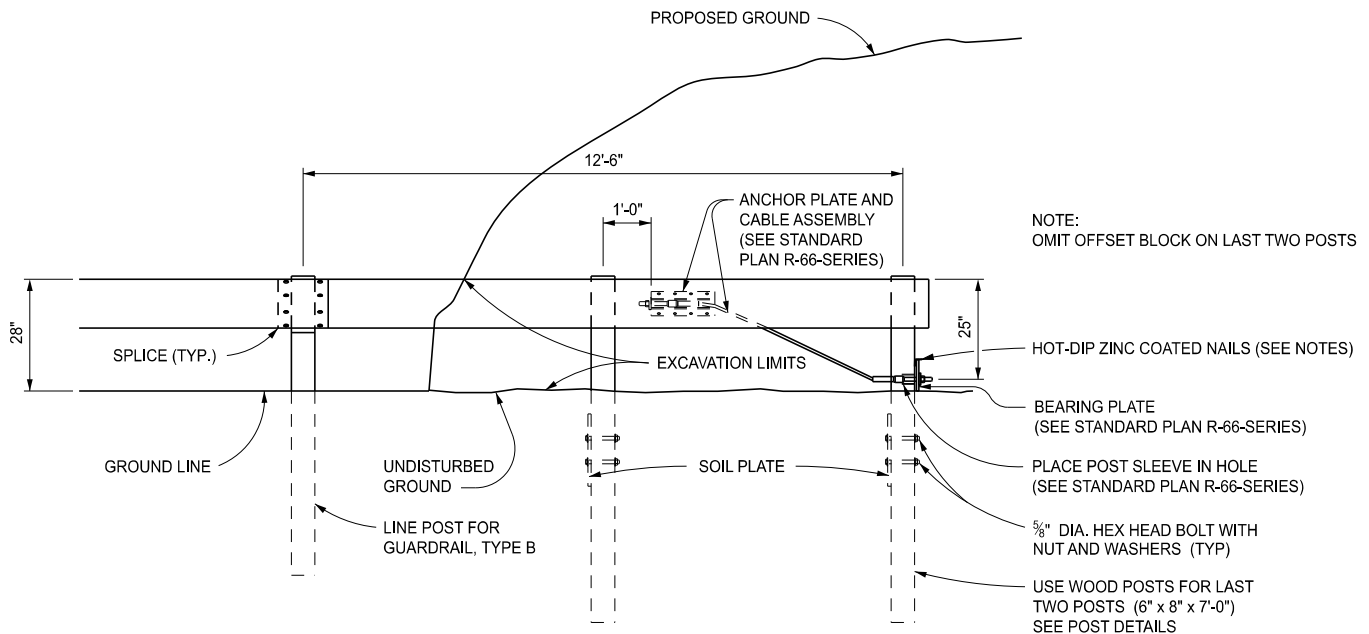
03/17/2026
PLAN DATE

SPECIAL DETAIL 24

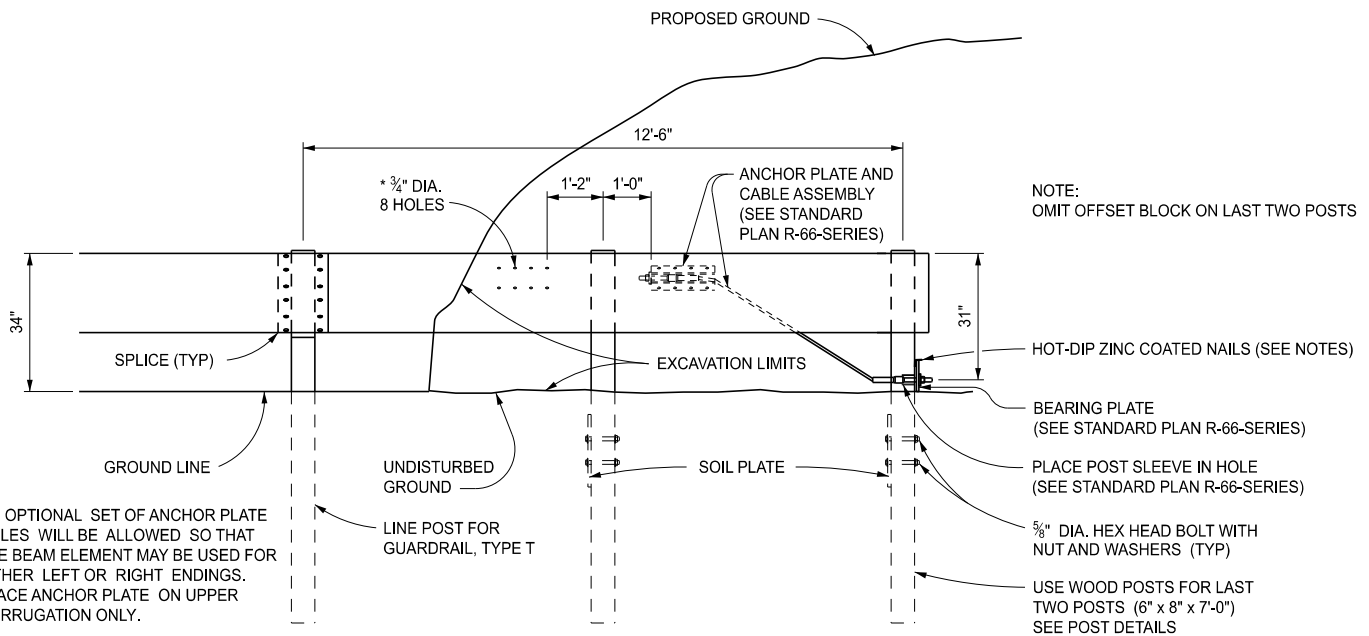
SHEET
2 OF 8



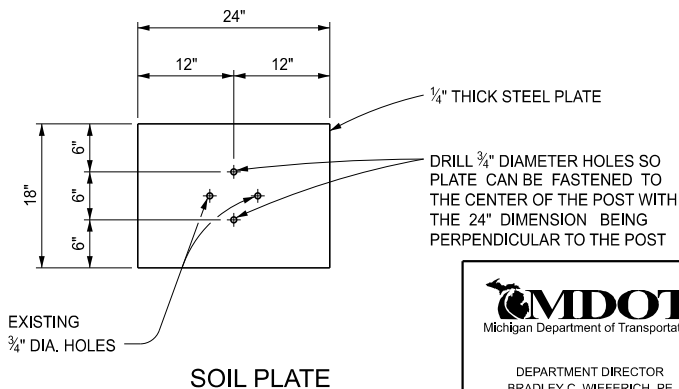
PLAN VIEW



ELEVATION GUARDRAIL, TYPE 4B



ELEVATION GUARDRAIL, TYPE 4T



DEPARTMENT DIRECTOR
BRADLEY C. WIEFERICH, PE

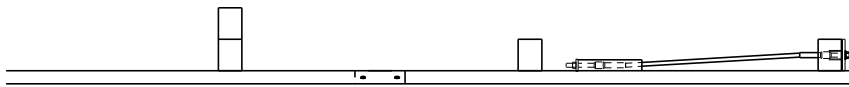
SPECIAL DETAIL FOR GUARDRAIL ANCHORED IN BACKSLOPE TYPES 4B, 4T, & 4MGS-8

(SPECIAL DETAIL)
FHWA APPROVAL

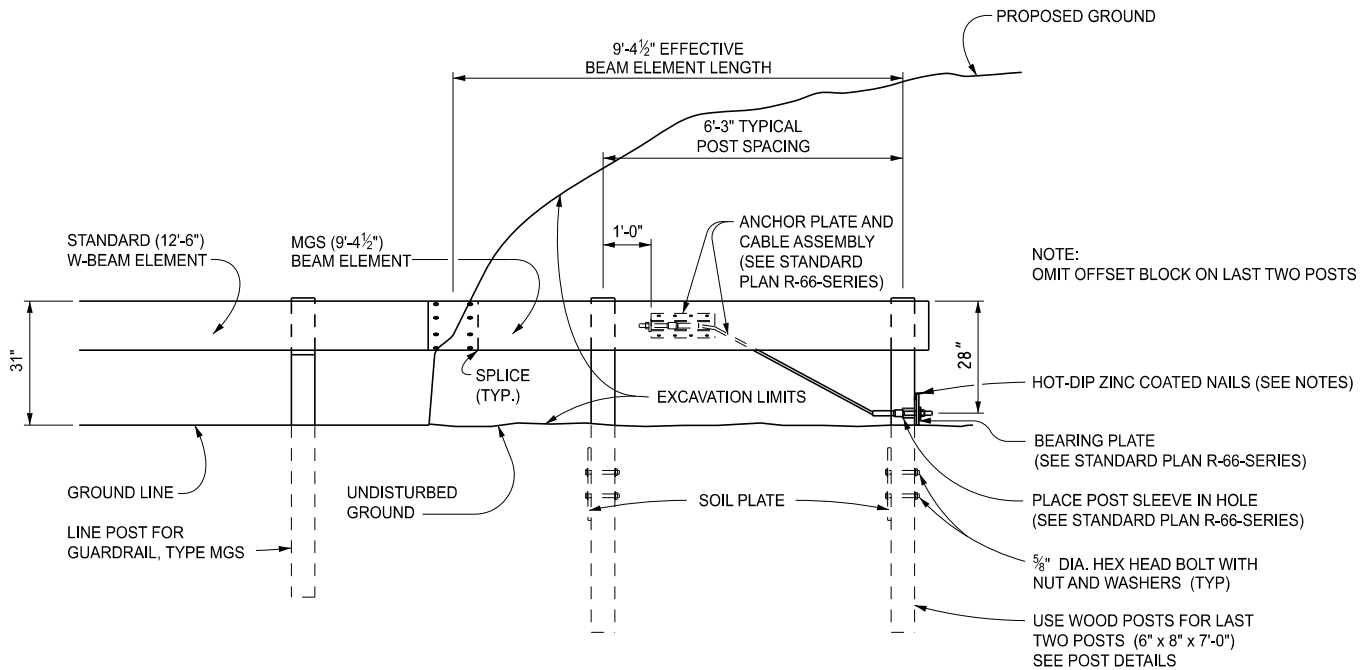
03/17/2026
PLAN DATE

SPECIAL DETAIL 24

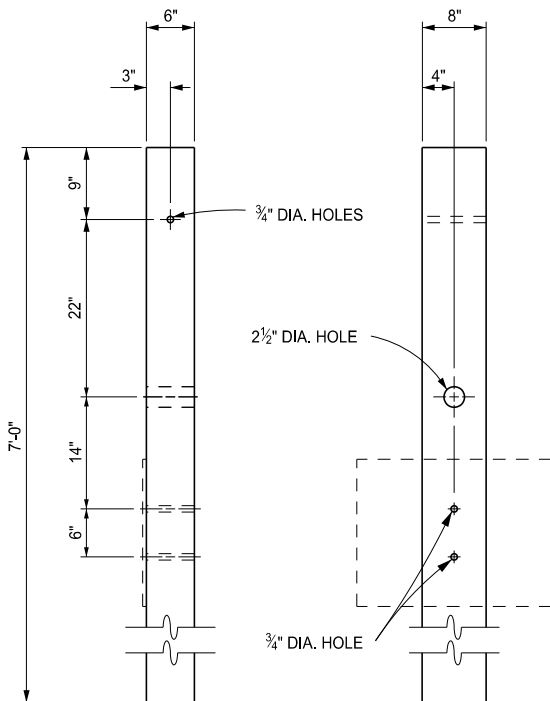
SHEET
3 OF 8



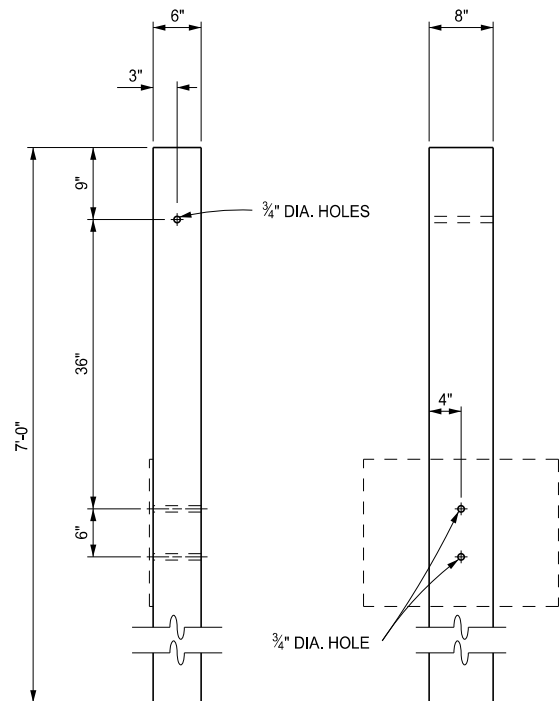
PLAN VIEW



ELEVATION GUARDRAIL, TYPE 4MGS-8



POST 1



POST 2

WOOD POST DETAILS

GUARDRAIL ANCHORED IN BACKSLOPE TYPE 4MGS-8



DEPARTMENT DIRECTOR
BRADLEY C. WIEFERICH, PE

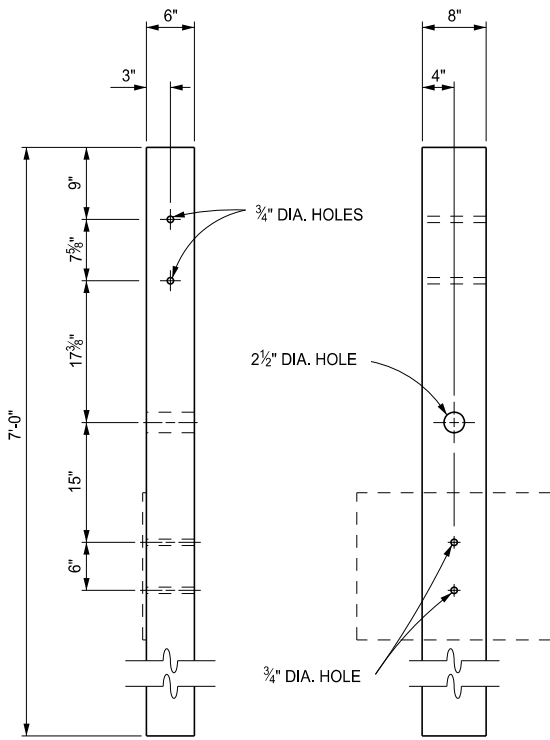
SPECIAL DETAIL FOR
GUARDRAIL ANCHORED IN BACKSLOPE
TYPES 4B, 4T, & 4MGS-8

(SPECIAL DETAIL)
FHWA APPROVAL

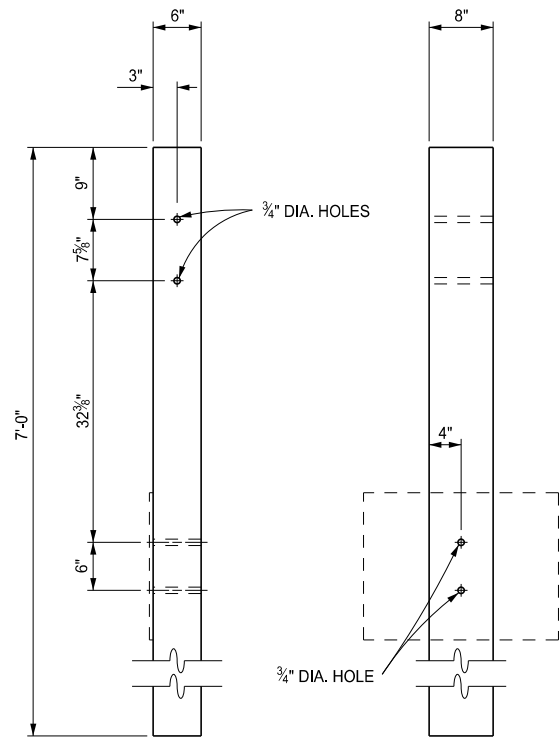
03/17/2026
PLAN DATE

SPECIAL DETAIL 24

SHEET
4 OF 8



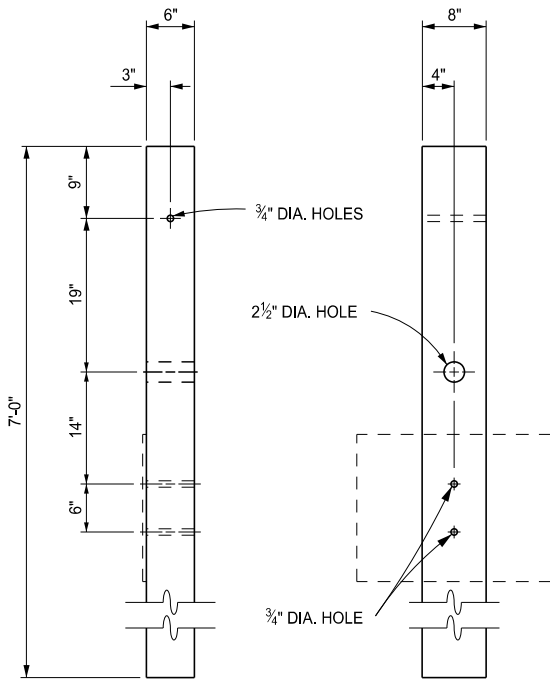
POST 1



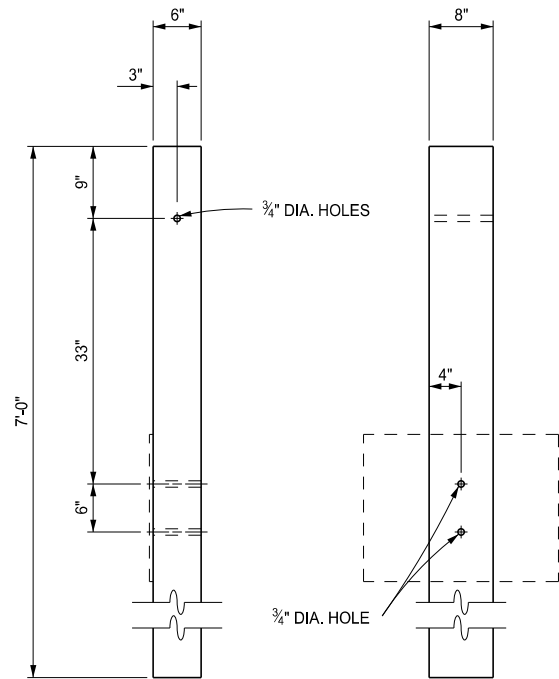
POST 2

WOOD POST DETAILS

GUARDRAIL ANCHORED IN BACKSLOPE TYPE 4T



POST 1



POST 2

WOOD POST DETAILS

GUARDRAIL ANCHORED IN BACKSLOPE TYPE 4B



DEPARTMENT DIRECTOR
BRADLEY C. WIEFERICH, PE

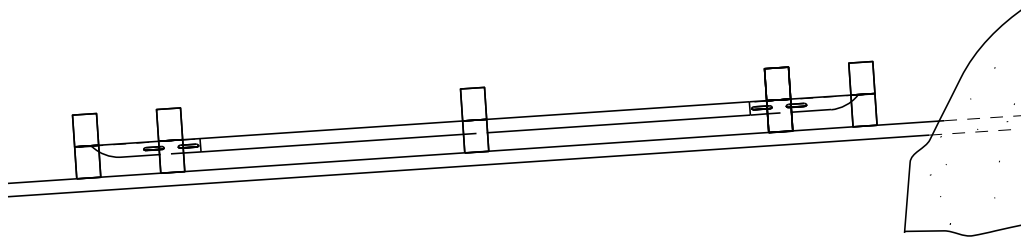
SPECIAL DETAIL FOR
GUARDRAIL ANCHORED IN BACKSLOPE
TYPES 4B, 4T, & 4MGS-8

(SPECIAL DETAIL)
FHWA APPROVAL

03/17/2026
PLAN DATE

SPECIAL DETAIL 24

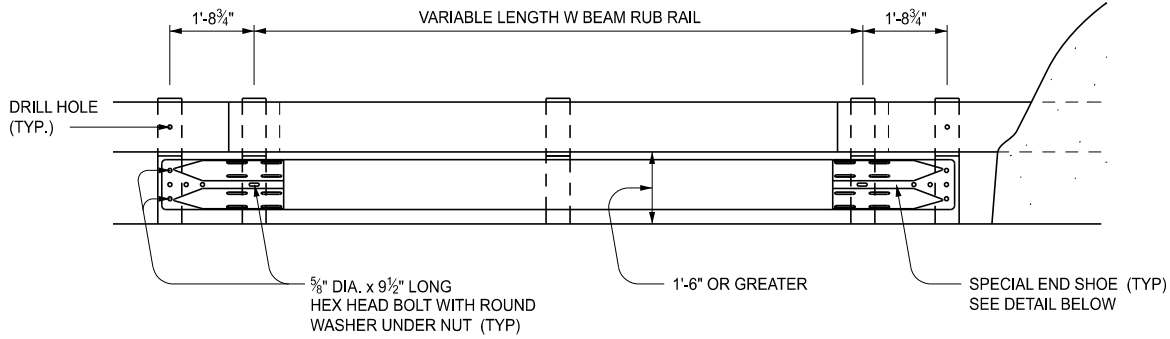
SHEET
5 OF 8



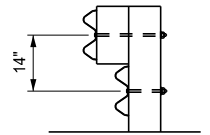
PLAN VIEW
WITH RUB RAIL

NOTE:

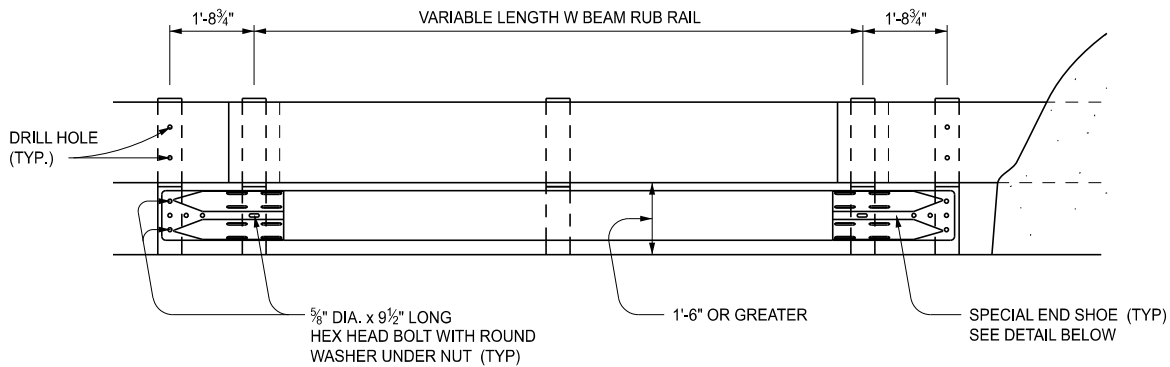
EXTRA POSTS, SPECIAL END SHOES, GUARDRAIL, HARDWARE AND ANY EXTRA WORK ARE INCLUDED IN THE BID ITEM GUARDRAIL ANCHORED IN BACKSLOPE TYPE 4B OR TYPE 4T.



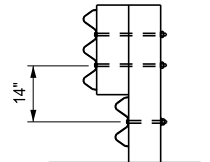
ELEVATION GUARDRAIL, TYPE 4B
WITH RUB RAIL



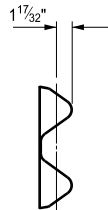
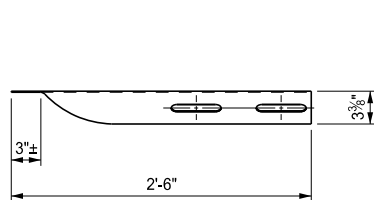
SECTION AT POST



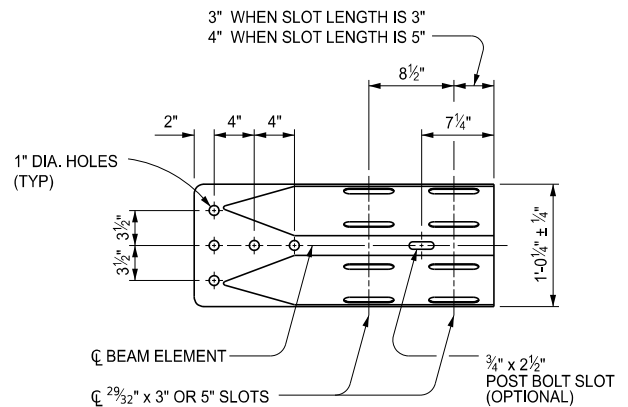
ELEVATION GUARDRAIL, TYPE 4T
WITH RUB RAIL



SECTION AT POST



SPECIAL END SHOE
(3" OR 5" SLOT LENGTHS)



DEPARTMENT DIRECTOR
BRADLEY C. WIEFERICH, PE

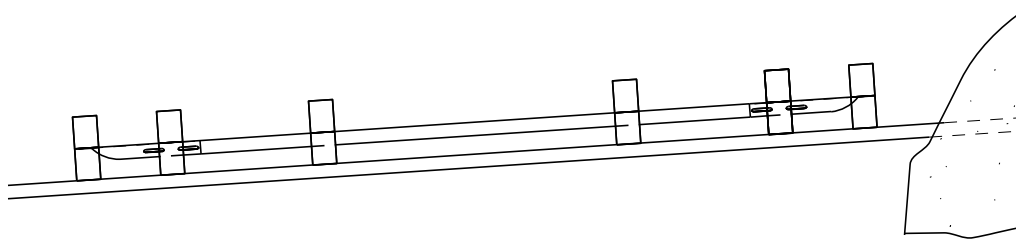
SPECIAL DETAIL FOR
GUARDRAIL ANCHORED IN BACKSLOPE
TYPES 4B, 4T, & 4MGS-8

(SPECIAL DETAIL)
FHWA APPROVAL

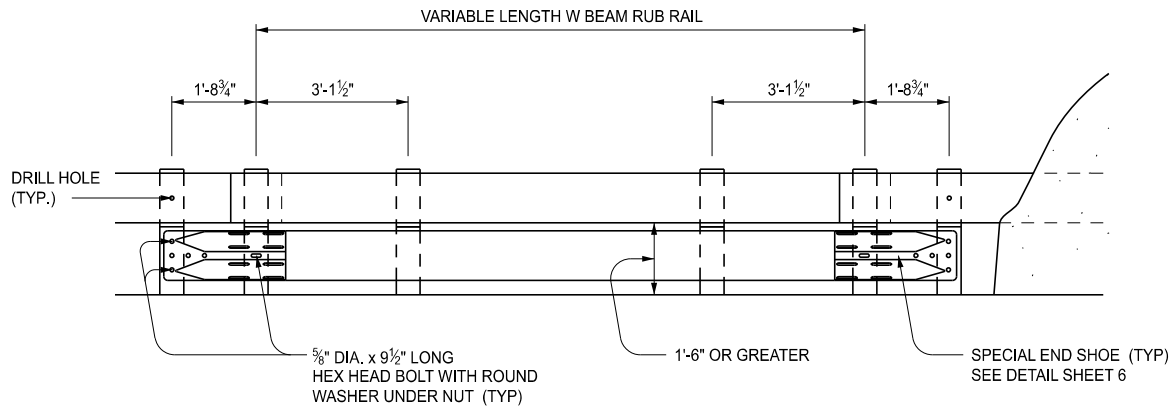
03/17/2026
PLAN DATE

SPECIAL DETAIL 24

SHEET
6 OF 8



PLAN VIEW GUARDRAIL, TYPE 4MGS-8
WITH RUB RAIL



ELEVATION GUARDRAIL, TYPE 4MGS-8
WITH RUB RAIL

NOTE:

EXTRA POSTS, SPECIAL END SHOES, GUARDRAIL, HARDWARE AND ANY EXTRA WORK ARE INCLUDED IN THE BID ITEM GUARDRAIL ANCHORED IN BACKSLOPE TYPE 4MGS-8



DEPARTMENT DIRECTOR
BRADLEY C. WIEFERICH, PE

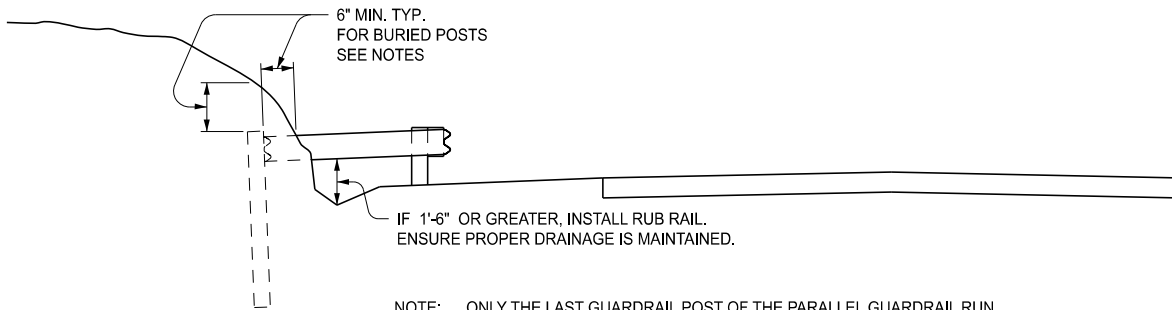
SPECIAL DETAIL FOR
GUARDRAIL ANCHORED IN BACKSLOPE
TYPES 4B, 4T, & 4MGS-8

(SPECIAL DETAIL)
FHWA APPROVAL

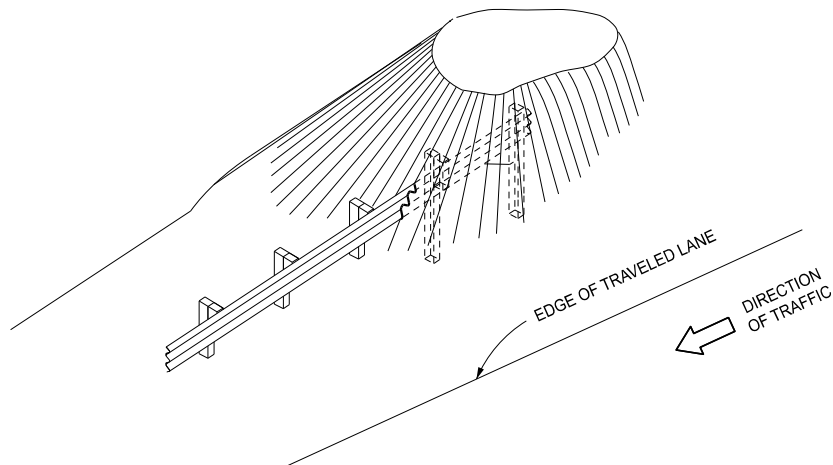
03/17/2026
PLAN DATE

SPECIAL DETAIL 24

SHEET
7 OF 8



NOTE: ONLY THE LAST GUARDRAIL POST OF THE PARALLEL GUARDRAIL RUN AND THE LAST BURIED GUARDRAIL POST ARE SHOWN.
(OTHER POSTS ALONG THE FLARED GUARDRAIL RUN ARE NOT SHOWN)



BURIED ENDING SKETCHES

NOTES:

ENSURE ALL POSTS, OFFSET BLOCKS, BEAM ELEMENTS, AND HARDWARE (INCLUDING BOLTS, NUTS, AND WASHERS) CONFORM TO THE STANDARD SPECIFICATIONS FOR CONSTRUCTION AND TO STANDARD PLAN R-60-SERIES, WHERE APPLICABLE, EXCEPT AS SPECIFIED ON THIS PLAN.

GRADE ALL 1:10 SLOPES TO CLASS A SLOPE TOLERANCES.

AFTER THE CABLE ASSEMBLY HAS BEEN TIGHTENED, INSTALL A SECOND NUT SO THE CABLE WILL NOT LOOSEN.

DRIVE TWO HOT-DIPPED ZINC COATED NAILS INTO THE WOOD POST AT THE TOP OF THE BEARING PLATE TO KEEP THE BEARING PLATE FROM ROTATING.

WHEN ADDITIONAL POST BOLT SLOTS ARE REQUIRED, DRILL OR PUNCH THE SLOTS, THEN RE-GALVANIZE. BURNING IS NOT ALLOWED.

SET THE TERMINAL A MINIMUM 6" INTO THE BACKSLOPE AND HAVE 6" OF COVER ON ALL SIDES TO LESSEN THE POSSIBILITY IT WILL BE EXPOSED BY EROSION AND SNAG AN IMPACTING VEHICLE.

ENSURE THE GUARDRAIL REMAINS AT A CONSTANT HEIGHT RELATIVE TO THE LOCAL GRADE. IF THE OPENING UNDER THE PRIMARY RAIL IS 1'-6" OR GREATER, USE A W-BEAM RUB-RAIL AS SHOWN ON THIS PLAN.



DEPARTMENT DIRECTOR
BRADLEY C. WIEFERICH, PE

SPECIAL DETAIL FOR GUARDRAIL ANCHORED IN BACKSLOPE TYPES 4B, 4T, & 4MGS-8

(SPECIAL DETAIL)
FHWA APPROVAL

03/17/2026
PLAN DATE

SPECIAL DETAIL 24

SHEET
8 OF 8