

NOTE:
FOR DRIVEWAYS, IF R.O.W. ALLOWS, USE DEPARTING END TERMINAL. (SEE STANDARD PLAN R-66-SERIES). IF R.O.W. IS LIMITED SUCH THAT A TYPICAL DEPARTING END TERMINAL CANNOT BE FIT IN, DRILL 8 HOLES IN THE CURVED BEAM GUARDRAIL TO ACCOMMODATE AN ANCHOR PLATE AND INSTALL A CABLE ANCHOR SIMILAR TO THAT OF THE DEPARTING END TERMINAL ON STANDARD PLAN R-66-SERIES. THIS WILL BE PAID FOR AS GUARDRAIL, DEPARTING TERMINAL.

APPROVED BY: _____
DIRECTOR, BUREAU OF FIELD SERVICES

APPROVED BY: _____
DIRECTOR, BUREAU OF DEVELOPMENT



DEPARTMENT DIRECTOR
BRADLEY C. WIEFERICH, PE

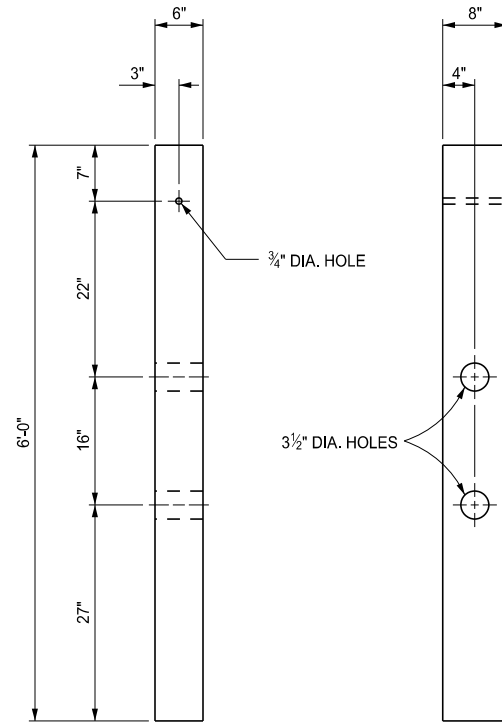
SPECIAL DETAIL FOR
GUARDRAIL AT INTERSECTIONS

(SPECIAL DETAIL)
FHWA APPROVAL

03/17/2026
PLAN DATE

SPECIAL DETAIL 21

SHEET
1 OF 2



CONTROLLED RELEASING TERMINAL POST
(CRT)

NOTES:

DO NOT EXCEED A 1:10 SLOPE IN FRONT OF THE INSTALLATION AND UP TO 2'-0" BEYOND THE BACK OF THE GUARDRAIL POST. ENSURE A 1:2 OR FLATTER SLOPE BEYOND THIS HINGE LINE.

KEEP THE CROSS HATCHED AREA BEHIND THE CURVED GUARDRAIL FREE OF FIXED OBJECTS.



DEPARTMENT DIRECTOR
BRADLEY C. WIEFERICH, PE

SPECIAL DETAIL FOR
GUARDRAIL AT INTERSECTIONS

(SPECIAL DETAIL)
FHWA APPROVAL

03/17/2026
PLAN DATE

SPECIAL DETAIL 21

SHEET
2 OF 2