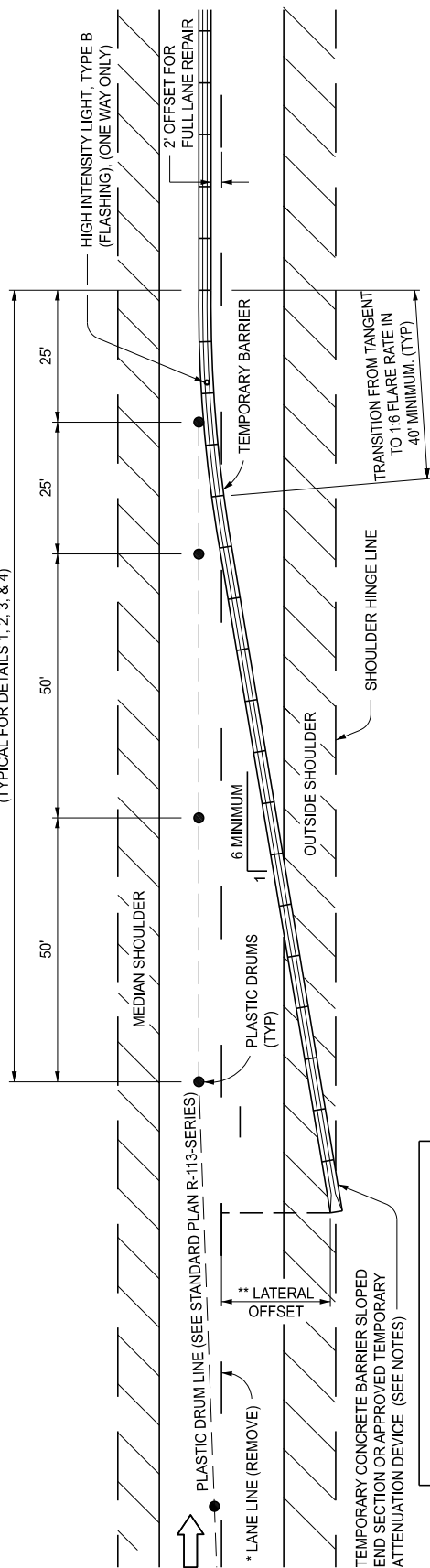


150' ON TANGENT
(TYPICAL FOR DETAILS 1, 2, 3, & 4)

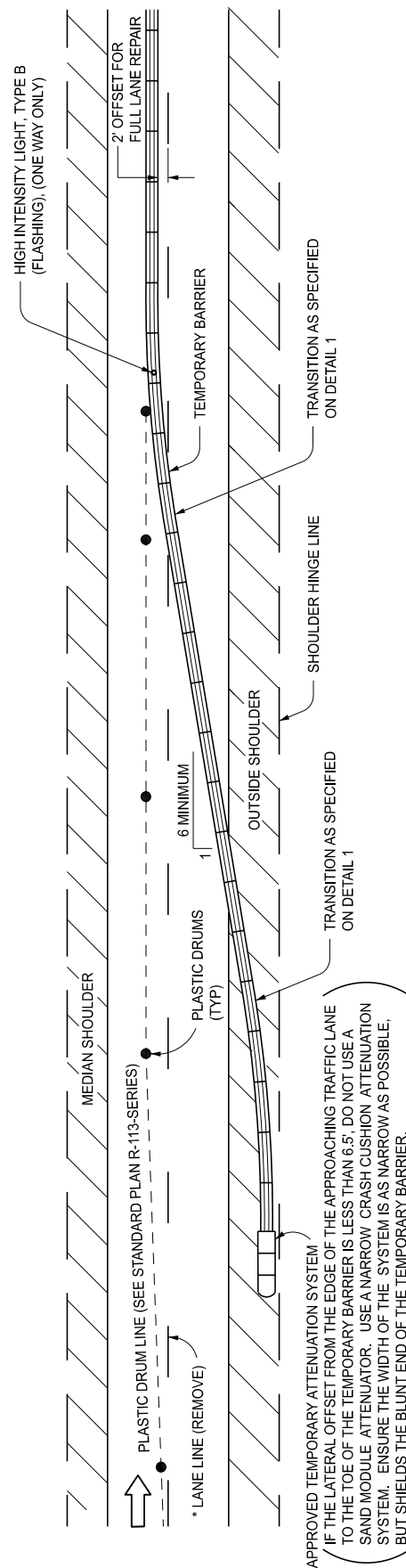


** LATERAL OFFSET (MINIMUM DISTANCE)	
SPEED (MPH)	DISTANCE (FEET)
≤ 35	15
40	18
45	20
50	23
≥ 55	31

* REMOVE LANE LINE A MINIMUM LENGTH EQUAL TO THE LENGTH OF THE DRUM LINE TAPER; TYPICAL FOR DETAILS 1, 2, 3, 4, AND 5.

** THE LATERAL OFFSET REFERS TO THE MINIMUM DISTANCE BETWEEN THE EDGE OF THE NEAREST TRAVELED (OPEN) LANE AND THE TRAFFIC SIDE OF THE ENDING OF THE TEMPORARY BARRIER. EXTEND THE BARRIER TO THE EDGE OF THE SHOULDER EVEN IF THIS DISTANCE IS BEYOND THE LATERAL OFFSET. IF THE LATERAL OFFSET DISTANCE IS GREATER THAN THE DISTANCE TO THE SHOULDER HINGE LINE, USE DETAIL 2.

DETAIL 1



DETAIL 2

WHEN DETAIL 1 CANNOT BE USED BECAUSE OF RESTRICTED LATERAL OFFSET

APPROVED BY: _____
DIRECTOR, BUREAU OF FIELD SERVICES

APPROVED BY: _____
DIRECTOR, BUREAU OF DEVELOPMENT



DEPARTMENT DIRECTOR
BRADLEY C. WIEFERICH, PE

STANDARD PLAN FOR
PLACEMENT OF TEMPORARY CONCRETE BARRIER
AND TEMPORARY STEEL BARRIER

(SPECIAL DETAIL)
FHWA APPROVAL

08/21/2025
PLAN DATE

R-126-I

SHEET
1 OF 5

HIGH INTENSITY LIGHT, TYPE B
(FLASHING), (ONE WAY ONLY)

TEMPORARY BARRIER

TRANSITION AS SPECIFIED
ON DETAIL 1

2' OFFSET FOR
FULL LANE REPAIR

EXISTING GUARDRAIL

SHOULDER HINGE LINE

OUTSIDE SHOULDER

6 MINIMUM

PLASTIC DRUMS
(TYP)

PLASTIC DRUM LINE (SEE STANDARD PLAN R-113-SERIES)

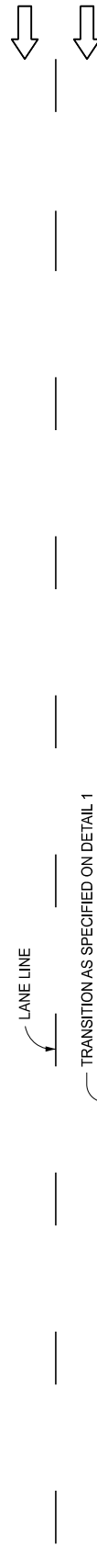
* LANE LINE (REMOVE)
SEE NOTE SHEET 1

REMOVE A MINIMUM OF TWO SECTIONS OF
GUARDRAIL AND POSTS IN THE RESULTING
OPENING. (REPLACE THE GUARDRAIL WHEN
TEMPORARY BARRIER IS REMOVED.)

EXTEND THE TEMPORARY BARRIER A MINIMUM OF 2' BEYOND
THE GUARDRAIL POST. PLACE BARRIER AGAINST POST.
(DO NOT BREAK INTO THE LENGTH OF A GUARDRAIL ENDING
TERMINAL. BEGIN BARRIER A MINIMUM OF ONE SECTION
OF RAIL BEYOND THE LENGTH OF THE APPROACH TERMINAL
OR REVISE THE TAPER RATE OF THE BARRIER.)

DETAIL 3

(TEMPORARY BARRIER IN GUARDRAIL AREA)



MEDIAN SHOULDER

EXISTING BARRIER/GUARDRAIL

TEMPORARY BARRIER

TRANSITION AS SPECIFIED ON DETAIL 1

6 MINIMUM

* LANE LINE (REMOVE)
SEE NOTE SHEET 1

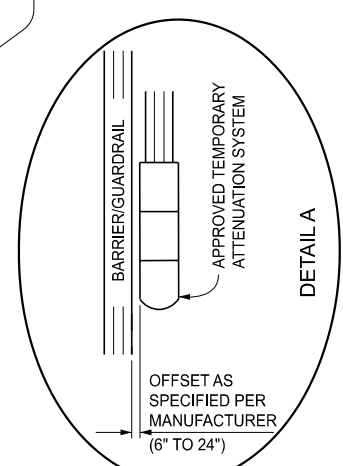
PLASTIC DRUM LINE
(SEE STANDARD PLAN R-113-SERIES)

APPROVED TEMPORARY ATTENUATION SYSTEM (SEE DETAIL A)

(IF THE LATERAL OFFSET FROM THE EDGE OF THE APPROACHING TRAFFIC LANE
TO THE TOE OF THE EXISTING BARRIER/GUARDRAIL IS LESS THAN 8', DO NOT
USE A SAND MODULE ATTENUATOR. USE A NARROW CRASH CUSHION ATTENUATION
SYSTEM. ENSURE THE WIDTH OF THE SYSTEM IS AS NARROW AS POSSIBLE, BUT
SHIELDS THE BLUNT END OF THE TEMPORARY BARRIER.)

HIGH INTENSITY LIGHT, TYPE B
(FLASHING), (ONE WAY ONLY)

NOTE: VALLEY GUTTER MAY BE ADJACENT TO PAVEMENT.



DETAIL 4

(TEMPORARY BARRIER IN MEDIAN BARRIER AREA)

NOTE: SIMILAR TREATMENT MAY BE USED ON SINGLE FACE BARRIER ON OUTSIDE SHOULDER.



DEPARTMENT DIRECTOR
BRADLEY C. WIEFERICH, PE

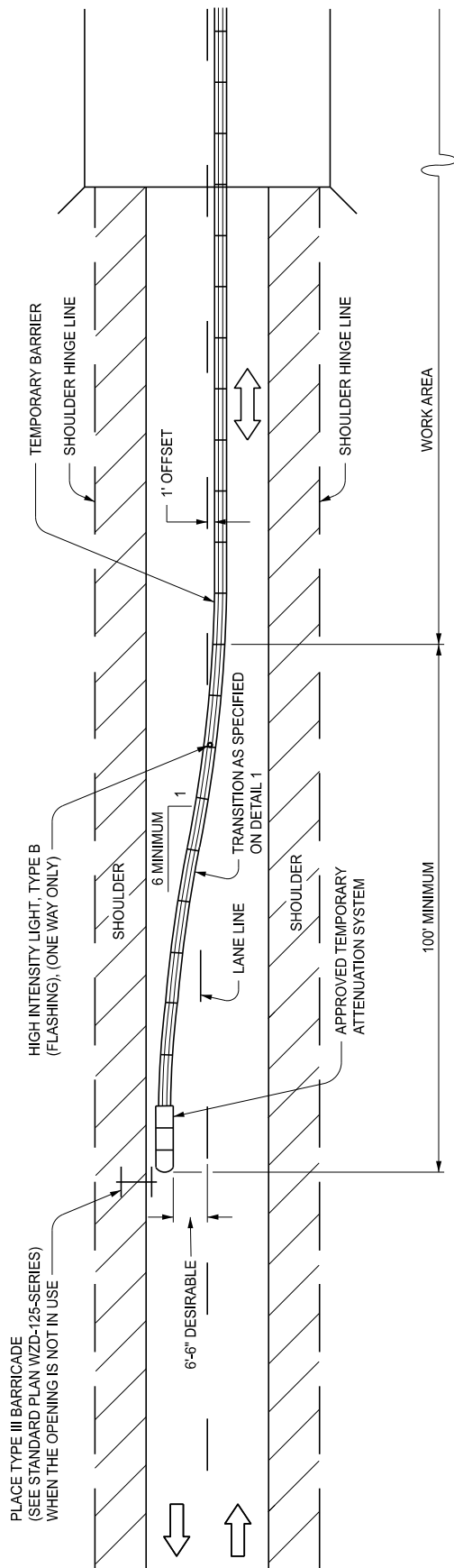
STANDARD PLAN FOR PLACEMENT OF TEMPORARY CONCRETE BARRIER AND TEMPORARY STEEL BARRIER

(SPECIAL DETAIL)
FHWA APPROVAL

08/21/2025
PLAN DATE

R-126-I

SHEET
2 OF 5



DETAIL 5
(TRAILING END OF TEMPORARY BARRIER ON TWO-WAY ROADWAY)

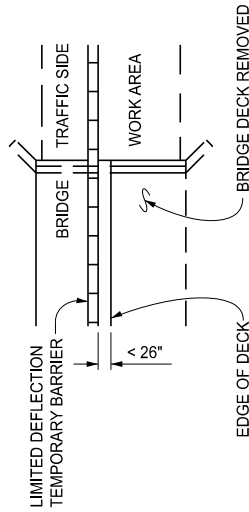
DETAIL 5 NOTES:

WHERE CONTROLLED BIDIRECTIONAL TRAFFIC IS MAINTAINED ON A SINGLE LANE, PLACE TEMPORARY BARRIER ON THE APPROACH END OF A LANE CLOSURE AS SPECIFIED ON DETAIL 1, 2 OR 3. ENSURE THE TRAILING END OF THE LANE CLOSURE IS AS SPECIFIED ON DETAIL 5. ENSURE THE PLASTIC DRUM LINE TAPER IS ACCORDING TO THE MICHIGAN MANUAL OF UNIFORM TRAFFIC CONTROL DEVICES OR THE MAINTAINING TRAFFIC PROVISIONS IN THE PLANS OR PROPOSAL. ENSURE THE TEMPORARY BARRIER END SECTION ON THE TRAILING END OF THE TEMPORARY BARRIER IS PARALLEL WITH THE TRAFFIC.

BARRIER ADJACENT TO A PRECIPITOUS DROP-OFF:

WHEN THERE IS 26" OR MORE Laterally BETWEEN THE TOE OF THE BARRIER ON THE CONSTRUCTION SIDE AND THE DROP-OFF, USE STANDARD TEMPORARY CONCRETE BARRIER OR TEMPORARY STEEL BARRIER MEETING MDOT SPECIFICATIONS NEAR THE DROP-OFF. NO SPECIAL HARDWARE OR PROCEDURES ARE NECESSARY. HOWEVER, WHEN THERE IS LESS THAN 26" Laterally BETWEEN THE TOE OF THE BARRIER ON THE CONSTRUCTION SIDE AND THE DROP-OFF, USE AN APPROPRIATE LIMITED DEFLECTION TEMPORARY BARRIER DETAIL MEETING THE REQUIREMENTS OF STANDARD PLAN R-53-SERIES OR AN APPROVED ALTERNATIVE.

REFER TO STANDARD PLAN R-53-SERIES FOR ADDITIONAL INFORMATION REGARDING LIMITED DEFLECTION TEMPORARY BARRIER DETAILS.



TEMPORARY BARRIER ADJACENT TO A PRECIPITOUS DROP-OFF



DEPARTMENT DIRECTOR
BRADLEY C. WIEFERICH, PE

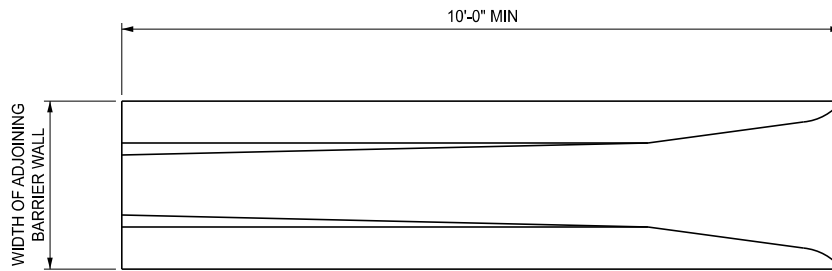
STANDARD PLAN FOR
**PLACEMENT OF TEMPORARY CONCRETE BARRIER
AND TEMPORARY STEEL BARRIER**

(SPECIAL DETAIL)
FHWA APPROVAL

08/21/2025
PLAN DATE

R-126-I

SHEET
3 OF 5



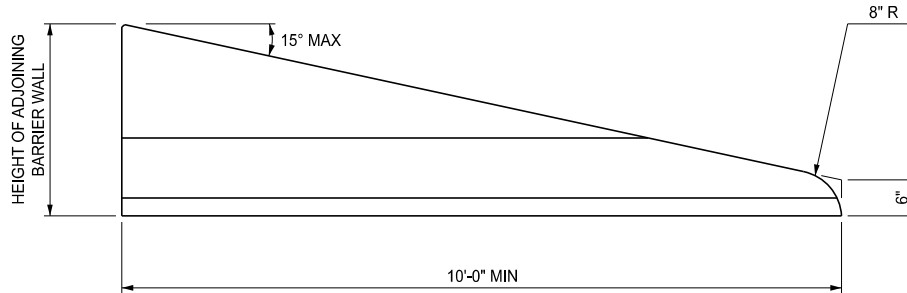
TOP VIEW

NOTES:

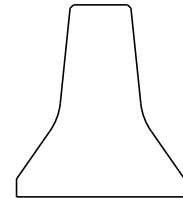
CONNECTIONS AND HARDWARE USED TO CONNECT THE SLOPED END SECTION TO TEMPORARY CONCRETE BARRIER (TCB) MUST MATCH CONNECTIONS BETWEEN TCB SEGMENTS AND MEET THE REQUIREMENTS OF NCHRP 350 OR MASH (TEST LEVEL 3 OR HIGHER).

STIRRUP DETAILS PROVIDED FOR ILLUSTRATION PURPOSES. ACTUAL STIRRUP DETAILS WILL VARY BASED ON END SECTION SHAPE, DIMENSIONS, AND STIRRUP LOCATION.

DESIGN STIRRUPS TO PROVIDE A MINIMUM OF 2 INCHES OF CLEAR COVER FROM ANY LOCATION ON THE SURFACE OF THE END SECTION.



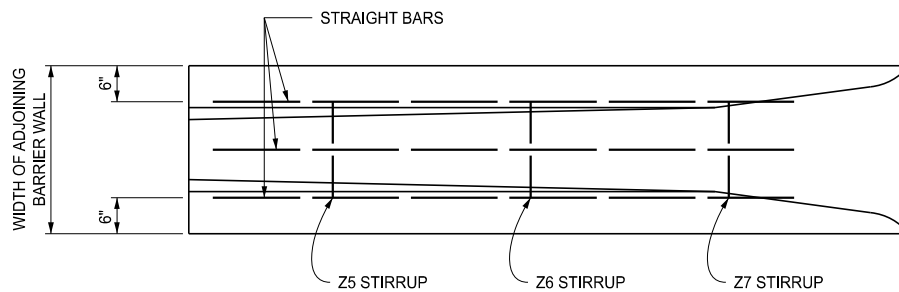
ELEVATION VIEW



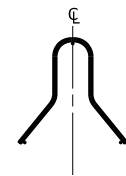
END VIEW

MUST MATCH CROSS-SECTIONAL SHAPE AND DIMENSIONS OF ADJOINING BARRIER WALL

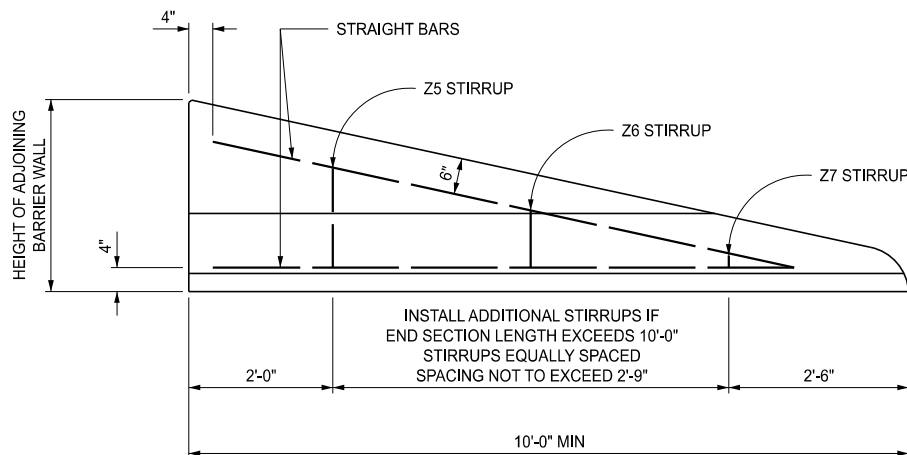
TEMPORARY CONCRETE BARRIER SLOPED END SECTION



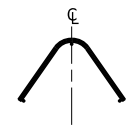
TOP VIEW



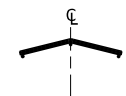
Z5 STIRRUP DETAIL



ELEVATION VIEW



Z6 STIRRUP DETAIL



Z7 STIRRUP DETAIL

STEEL REINFORCEMENT FOR TEMPORARY CONCRETE BARRIER SLOPED END SECTION

NOTE: USE #5 BARS FOR ALL STRAIGHT BARS AND STIRRUPS



DEPARTMENT DIRECTOR
BRADLEY C. WIEFERICH, PE

STANDARD PLAN FOR
PLACEMENT OF TEMPORARY CONCRETE BARRIER
AND TEMPORARY STEEL BARRIER

(SPECIAL DETAIL)
FHWA APPROVAL

08/21/2025
PLAN DATE

R-126-I

SHEET
4 OF 5

NOTES:

THE DETAILS IN STANDARD PLAN R-126-SERIES ARE NOT APPLICABLE TO PORTABLE WATER-FILLED BARRIER. PLACE PORTABLE WATER-FILLED BARRIER AS SHOWN ON THE PLANS OR AS DIRECTED BY THE ENGINEER.

IN REGARDS TO SEQUENCE, PLACE BARRIER IN THE DIRECTION OF TRAFFIC FLOW. REMOVE BARRIER IN THE DIRECTION OPPOSITE TO TRAFFIC FLOW.

ATTENUATE TEMPORARY BARRIER ENDINGS SUBJECT TO APPROACH TRAFFIC (WHEN NOT TERMINATED BEHIND GUARDRAIL) OR IF APPLICABLE, SHIELD WITH A TEMPORARY CONCRETE BARRIER SLOPED END SECTION.

USE DETAIL 2 WHEN THERE IS NO EXISTING GUARDRAIL OR BARRIER AVAILABLE AS SPECIFIED IN DETAILS 3 OR 4.

THE LOCATION OF THE HIGH INTENSITY LIGHT, TYPE B (FLASHING) SPECIFIED IN DETAIL 1, APPLIES TO DETAILS 2, 3, 4, AND 5. FASTEN THE HIGH INTENSITY LIGHT, TYPE B, ON THE TOP OF THE BARRIER.

THE MINIMUM BARRIER FLARE RATE IS 6' OF RUN FOR EVERY FOOT OF OFFSET.

EXACT LATERAL PLACEMENT OF BARRIER MUST BE SPECIFIED ON THE PLANS OR IN THE PROPOSAL. THE BARRIER POSITION SPECIFIED IS DESIRABLE WHEN THE WORK AREA INVOLVES THE FULL WIDTH OF THE CLOSED LANE. WHEN PARTIAL LANE WORK IS INVOLVED (OR SHOULDER WORK ONLY), SET THE BARRIER INSIDE CLOSED LANE AS ALLOWED BY WORK AREA WITH 2' OR MORE OFFSET DESIRABLE TO THE LANE LINE.

IN DETAIL 3, EXISTING GUARDRAIL POSTS ARE REMOVED TO FACILITATE PLACING TEMPORARY BARRIER BEHIND THE GUARDRAIL. THE BARRIER DEPARTURE ANGLE WILL DETERMINE THE AMOUNT OF BEAM GUARDRAIL AND THE NUMBER OF POSTS TO BE REMOVED.

OMIT THE HIGH INTENSITY LIGHT, TYPE B WHERE TWO-WAY TRAFFIC IS MAINTAINED ON ONE LANE AND IS CONTROLLED BY TRAFFIC SIGNALS.

WHEN USING STEEL BARRIER IN DETAIL 1, ATTACH AN APPROVED TEMPORARY ATTENUATION SYSTEM TO TEMPORARY STEEL BARRIER. ATTACHING A TEMPORARY CONCRETE BARRIER SLOPED END SECTION TO TEMPORARY STEEL BARRIER IS PROHIBITED. WHEN USING CONCRETE BARRIER, ATTACH A TEMPORARY CONCRETE BARRIER SLOPED END SECTION OR AN APPROVED TEMPORARY ATTENUATION SYSTEM TO THE TEMPORARY CONCRETE BARRIER.