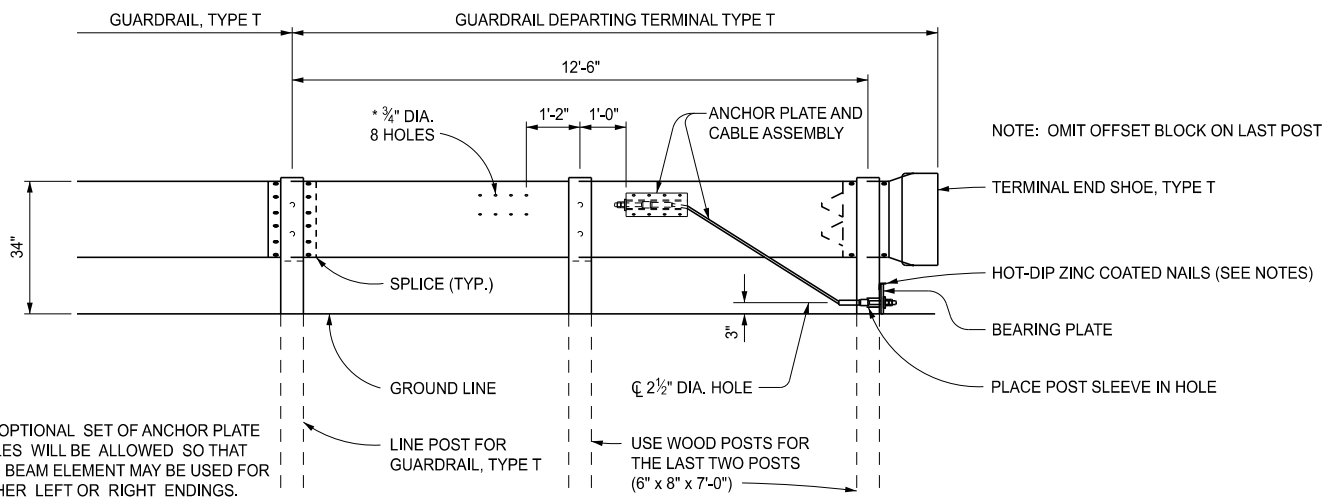
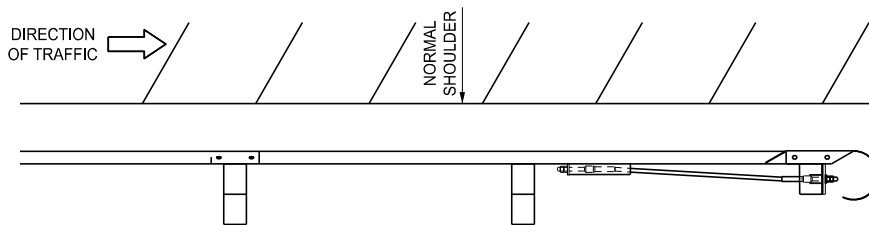


GUARDRAIL DEPARTING TERMINAL TYPE B



\* AN OPTIONAL SET OF ANCHOR PLATE HOLES WILL BE ALLOWED SO THAT THE BEAM ELEMENT MAY BE USED FOR EITHER LEFT OR RIGHT ENDINGS. PLACE ANCHOR PLATE ON UPPER CORRUGATION ONLY.

GUARDRAIL DEPARTING TERMINAL TYPE T

APPROVED BY: \_\_\_\_\_  
DIRECTOR, BUREAU OF FIELD SERVICES

APPROVED BY: \_\_\_\_\_  
DIRECTOR, BUREAU OF DEVELOPMENT



DEPARTMENT DIRECTOR  
BRADLEY C. WIEFERICH, PE

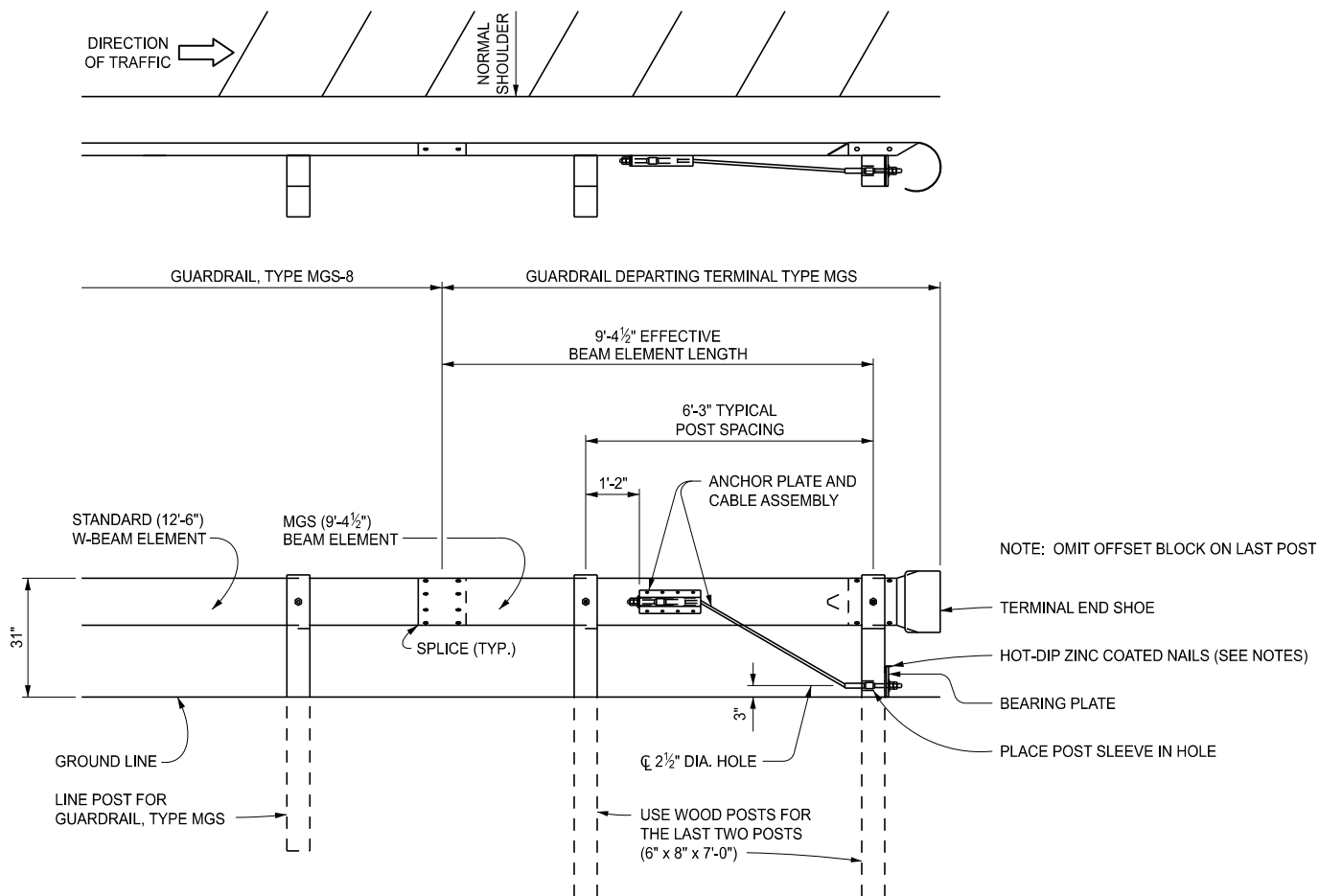
STANDARD PLAN FOR  
GUARDRAIL DEPARTING TERMINAL TYPES B, T, & MGS

(SPECIAL DETAIL)  
FHWA APPROVAL

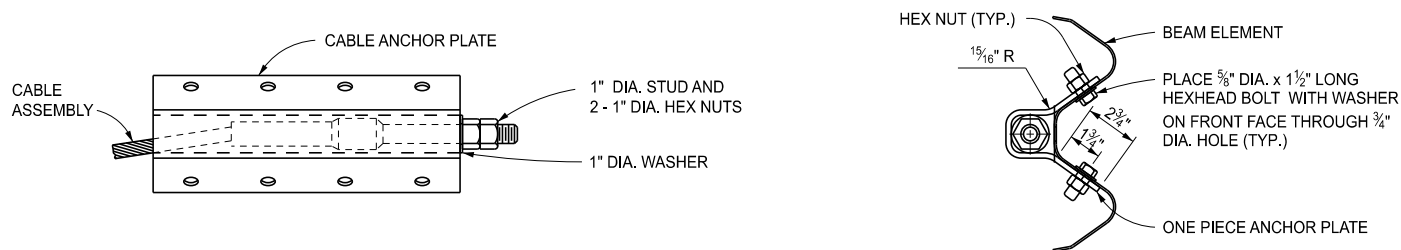
02/23/2026  
PLAN DATE

R-66-E

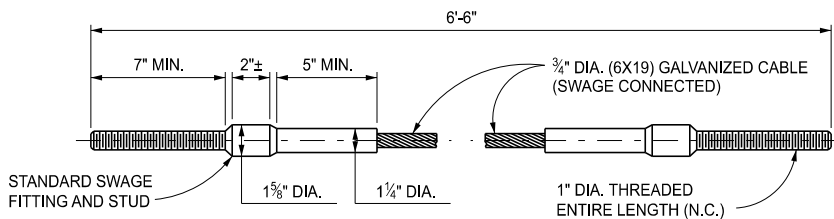
SHEET  
1 OF 4



GUARDRAIL DEPARTING TERMINAL TYPE MGS



CABLE ANCHOR PLATE DETAILS



CABLE ASSEMBLY



DEPARTMENT DIRECTOR  
BRADLEY C. WIEFERICH, PE

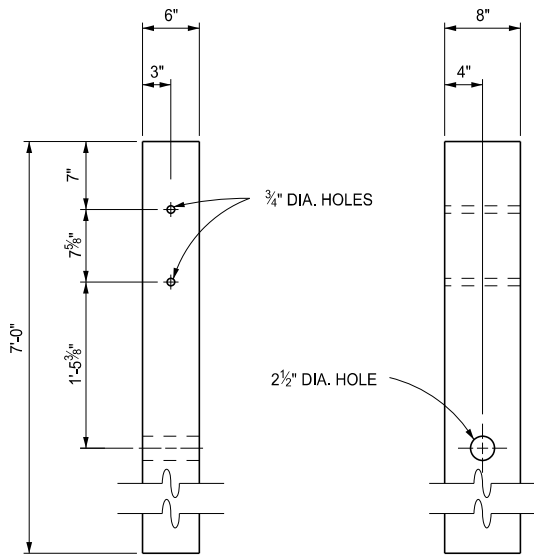
STANDARD PLAN FOR  
GUARDRAIL DEPARTING TERMINAL TYPES B, T, & MGS

(SPECIAL DETAIL)  
FHWA APPROVAL

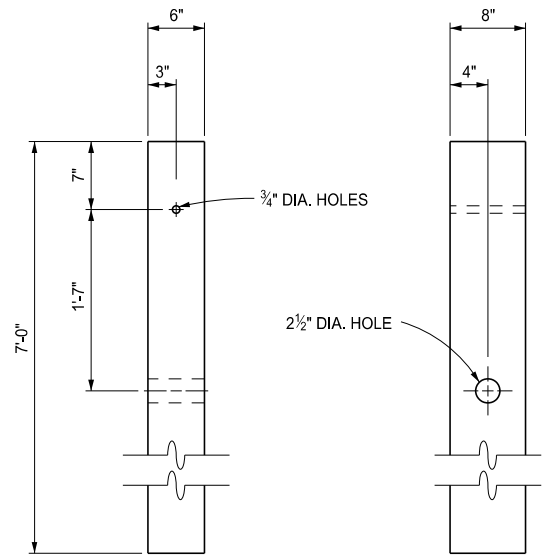
02/23/2026  
PLAN DATE

R-66-E

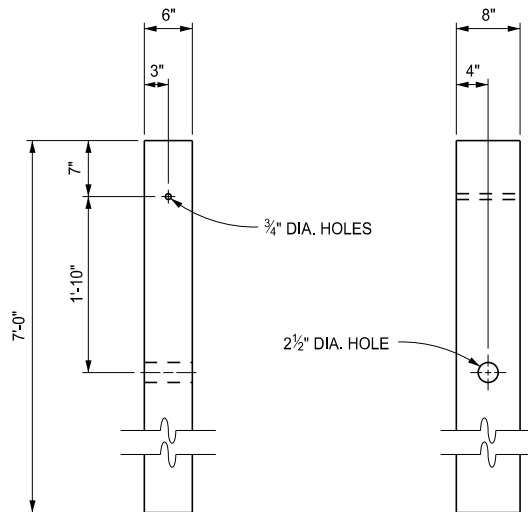
SHEET  
2 OF 4



**WOOD POST DETAIL**  
( FOR LAST POST, GUARDRAIL DEPARTING TERMINAL TYPE T )



**WOOD POST DETAIL**  
( FOR LAST POST, GUARDRAIL DEPARTING TERMINAL TYPE B )



**WOOD POST DETAIL**  
( FOR LAST POST, GUARDRAIL DEPARTING TERMINAL TYPE MGS )



DEPARTMENT DIRECTOR  
BRADLEY C. WIEFERICH, PE

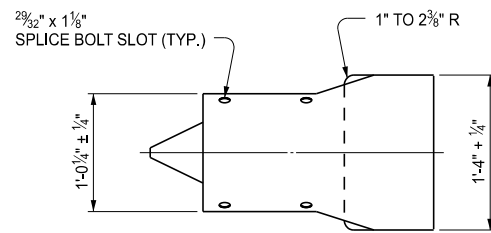
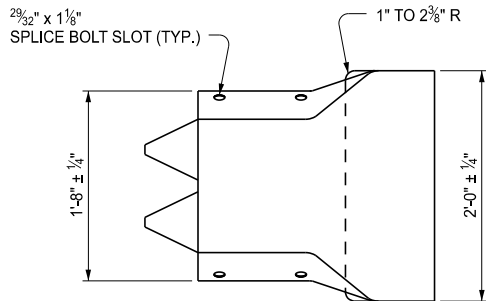
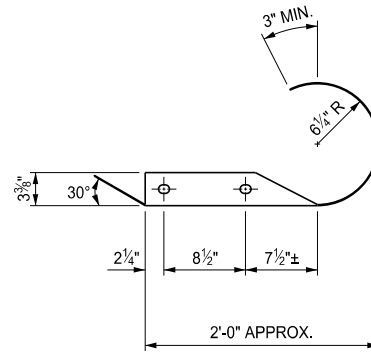
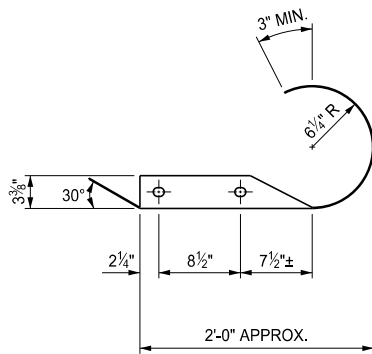
STANDARD PLAN FOR  
GUARDRAIL DEPARTING TERMINAL TYPES B, T, & MGS

(SPECIAL DETAIL)  
FHWA APPROVAL

02/23/2026  
PLAN DATE

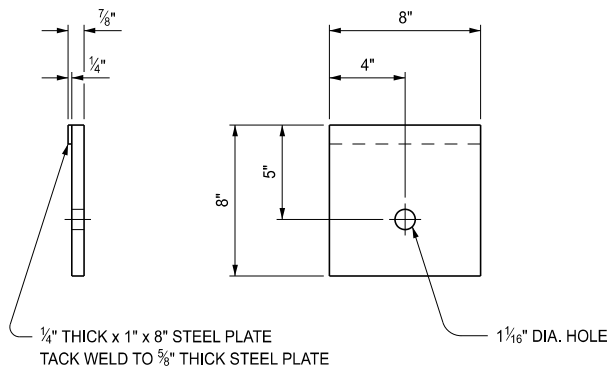
**R-66-E**

SHEET  
3 OF 4



TERMINAL END SHOE,  
TYPE A, TYPE B OR TYPE MGS

TERMINAL END SHOE, TYPE T



BEARING PLATE



POST SLEEVE

NOTES:

ENSURE ALL POSTS, OFFSET BLOCKS, BEAM ELEMENTS, AND HARDWARE (INCLUDING BOLTS, NUTS, AND WASHERS) CONFORM TO THE STANDARD SPECIFICATIONS FOR CONSTRUCTION AND TO STANDARD PLAN R-60-SERIES, WHERE APPLICABLE, EXCEPT AS SPECIFIED ON THIS STANDARD.

FOR DETAILS OF GUARDRAIL PLACEMENT, SEE STANDARD PLAN R-59-SERIES.

GRADE ALL 1:10 SLOPES TO CLASS A SLOPE TOLERANCES.

AFTER THE CABLE ASSEMBLY HAS BEEN TIGHTENED, INSTALL A SECOND NUT ON EACH END OF THE CABLE SO THAT THE CABLE WILL NOT LOOSEN.

DRIVE TWO HOT-DIP ZINC COATED NAILS INTO THE WOOD POST AT THE TOP OF THE BEARING PLATE TO KEEP THE BEARING PLATE FROM ROTATING.



DEPARTMENT DIRECTOR  
BRADLEY C. WIEFERICH, PE

STANDARD PLAN FOR  
GUARDRAIL DEPARTING TERMINAL TYPES B, T, & MGS

(SPECIAL DETAIL)  
FHWA APPROVAL

02/23/2026  
PLAN DATE

R-66-E

SHEET  
4 OF 4