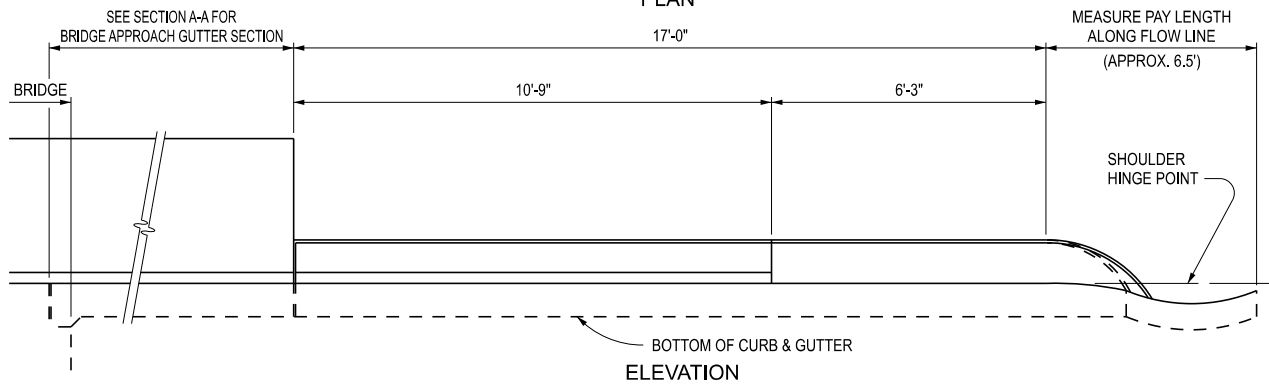
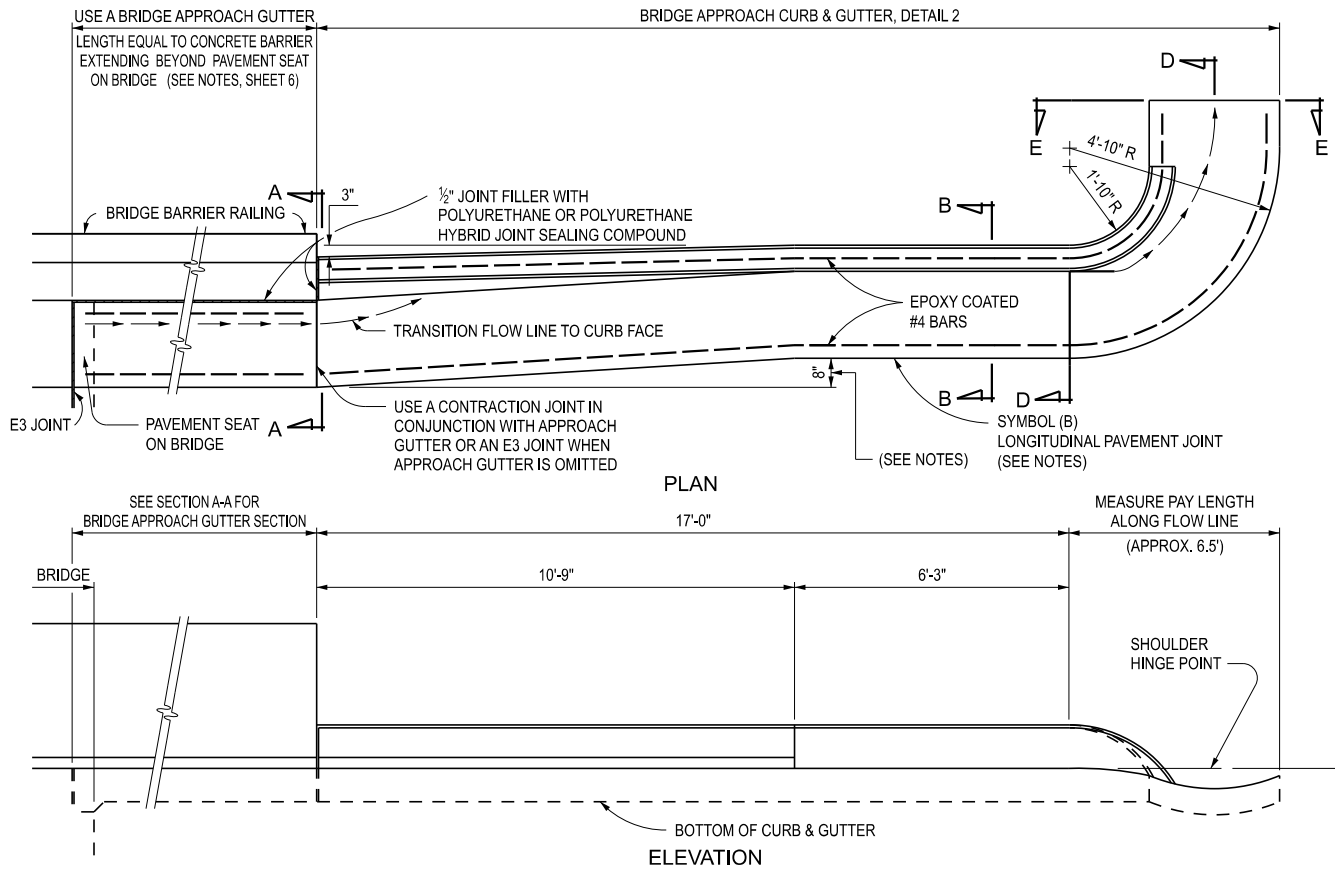


BRIDGE APPROACH CURB & GUTTER, DETAIL 1



BRIDGE APPROACH CURB & GUTTER, DETAIL 2

APPROVED BY: \_\_\_\_\_  
DIRECTOR, BUREAU OF FIELD SERVICES

APPROVED BY: \_\_\_\_\_  
DIRECTOR, BUREAU OF DEVELOPMENT



DEPARTMENT DIRECTOR  
BRADLEY C. WIEFERICH, PE

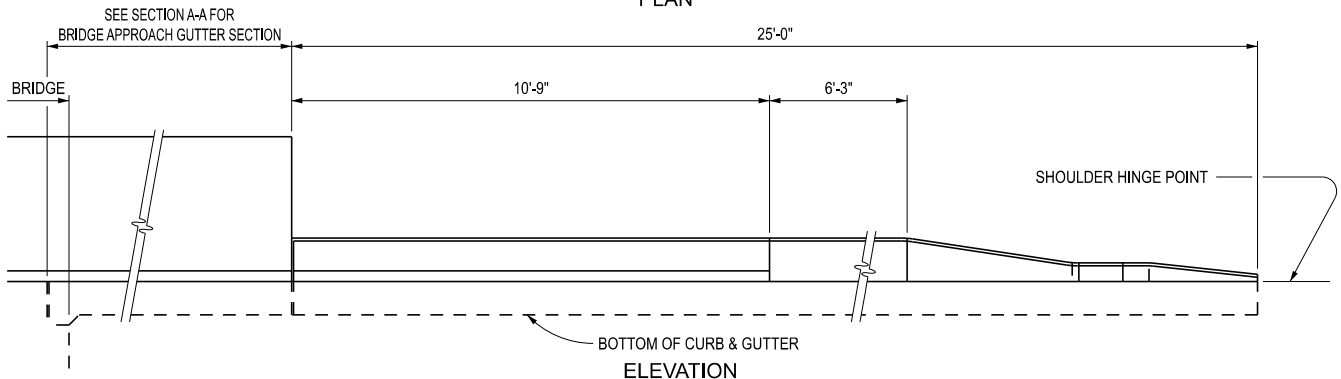
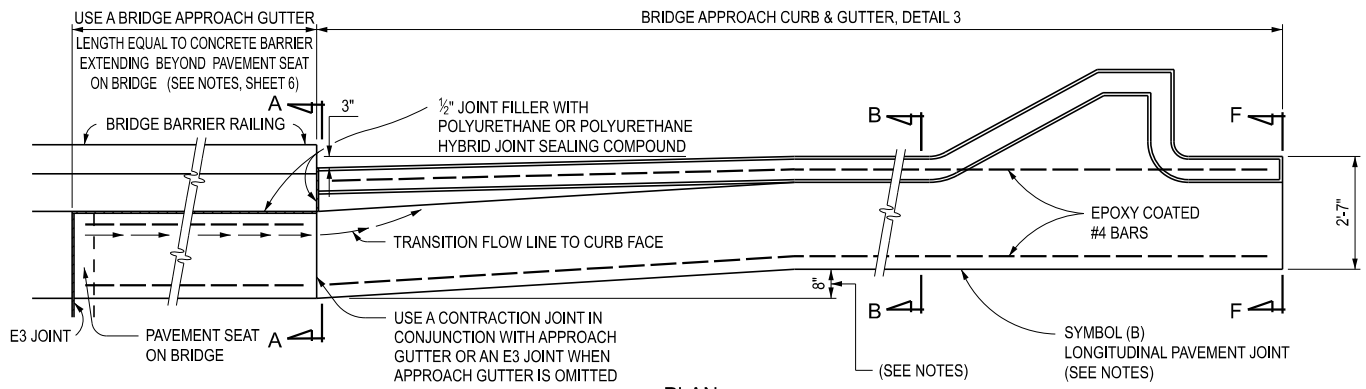
SPECIAL DETAIL FOR  
APPROACH CURB & GUTTER DOWNSPOUTS  
(FOR SAFETY SHAPE BRIDGE BARRIERS & RAILINGS)

(SPECIAL DETAIL)  
FHWA APPROVAL

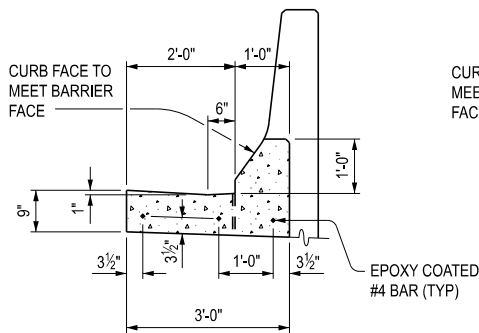
12/05/2025  
PLAN DATE

R-32-SD

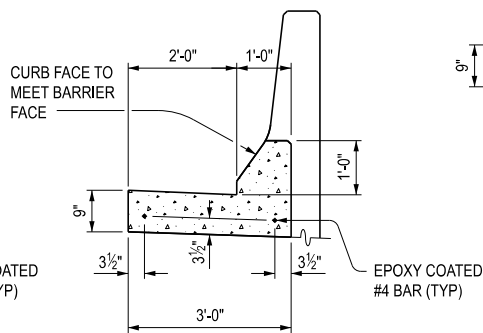
SHEET  
1 OF 6



BRIDGE APPROACH CURB & GUTTER, DETAIL 3

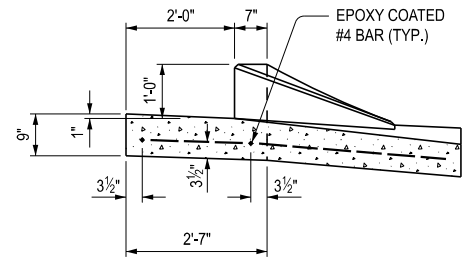


CROSS SECTION WHEN APPROACH GUTTER IS USED

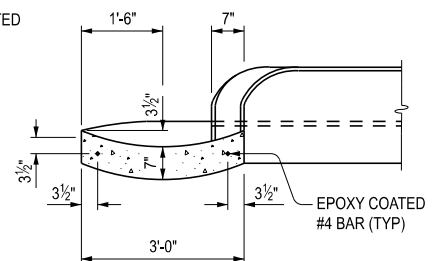


CROSS SECTION WHEN APPROACH GUTTER IS NOT USED

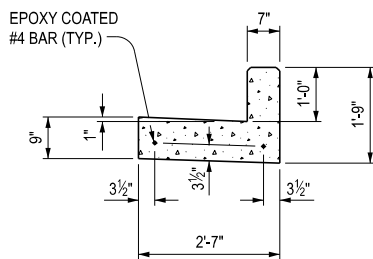
SECTION A - A  
(SEE NOTES, SHEET 6)



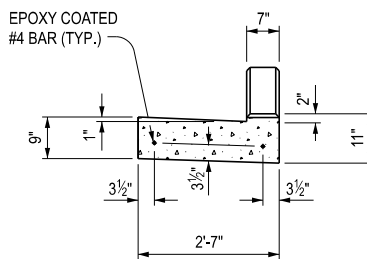
SECTION D - D



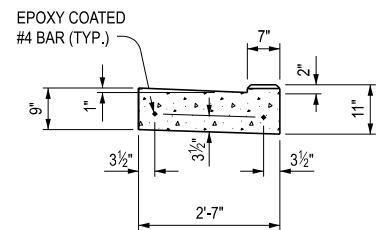
SECTION E - E



SECTION B - B



SECTION C - C



SECTION F - F



DEPARTMENT DIRECTOR  
BRADLEY C. WIEFERICH, PE

SPECIAL DETAIL FOR  
APPROACH CURB & GUTTER DOWNSPOUTS  
(FOR SAFETY SHAPE BRIDGE BARRIERS & RAILINGS)

(SPECIAL DETAIL)  
FHWA APPROVAL

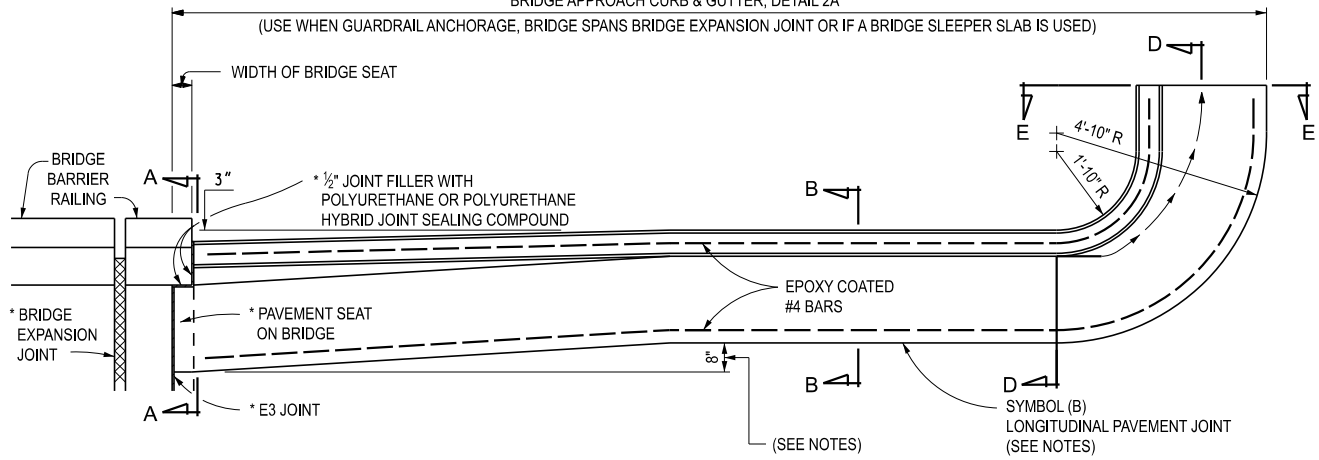
12/05/2025  
PLAN DATE

R-32-SD

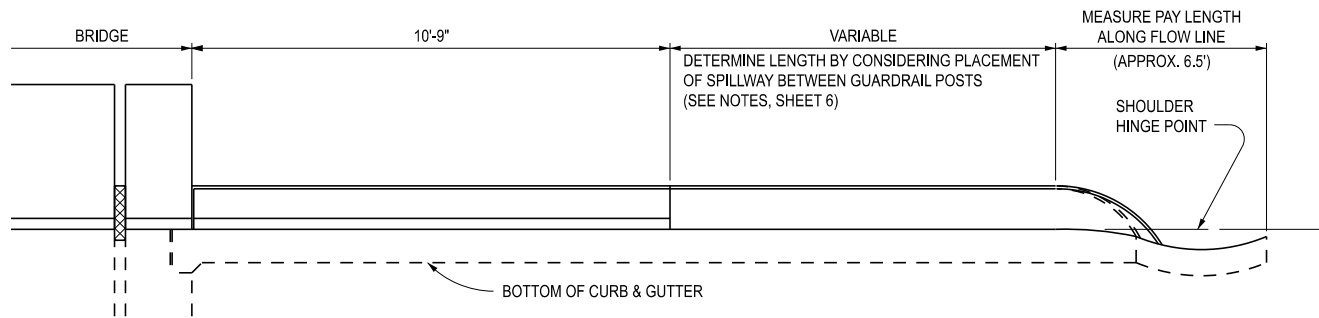
SHEET  
2 OF 6

# BRIDGE APPROACH CURB & GUTTER, DETAIL 2A

(USE WHEN GUARDRAIL ANCHORAGE, BRIDGE SPANS BRIDGE EXPANSION JOINT OR IF A BRIDGE SLEEPER SLAB IS USED)



PLAN

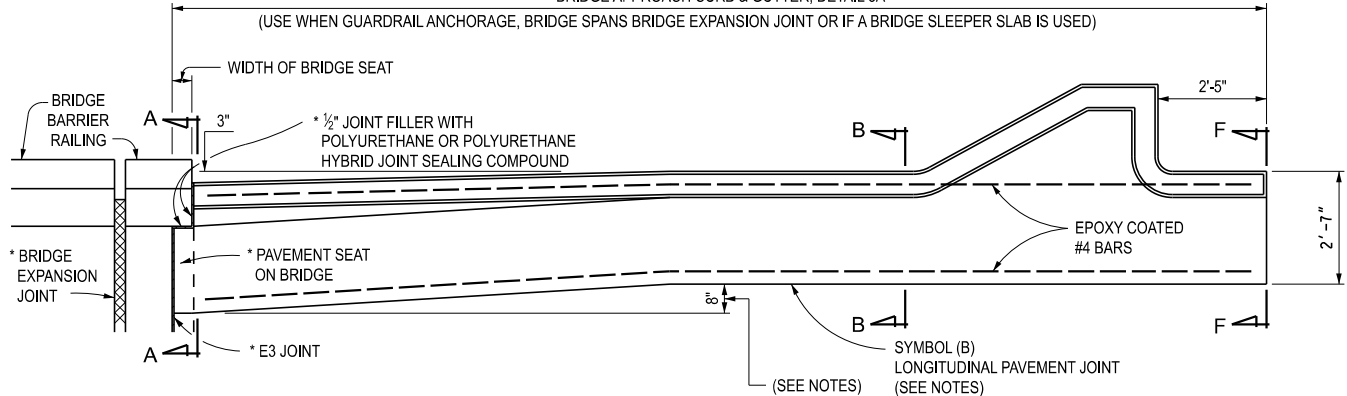


ELEVATION

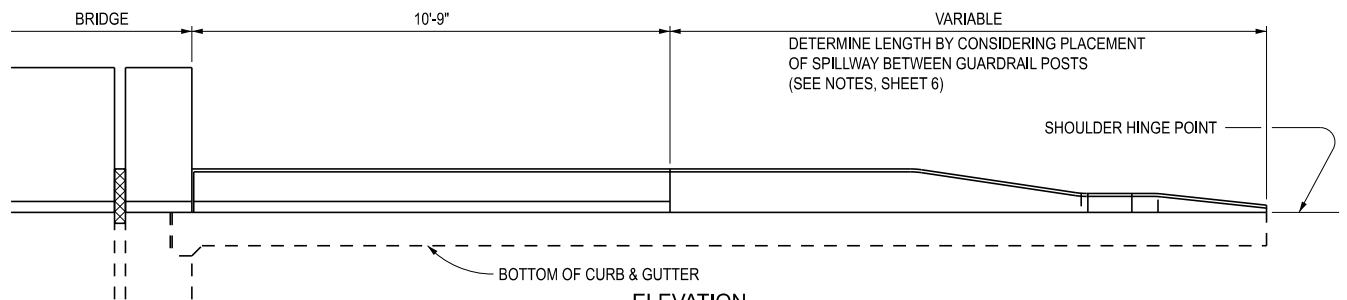
## BRIDGE APPROACH CURB & GUTTER, DETAIL 2A

# BRIDGE APPROACH CURB & GUTTER, DETAIL 3A

(USE WHEN GUARDRAIL ANCHORAGE, BRIDGE SPANS BRIDGE EXPANSION JOINT OR IF A BRIDGE SLEEPER SLAB IS USED)



PLAN



ELEVATION

## BRIDGE APPROACH CURB & GUTTER, DETAIL 3A

\* DO NOT USE 1/2" EXPANSION JOINT, E3 JOINT, AND PAVEMENT SEAT WHEN A BRIDGE SLEEPER SLAB IS USED



DEPARTMENT DIRECTOR  
BRADLEY C. WIEFERICH, PE

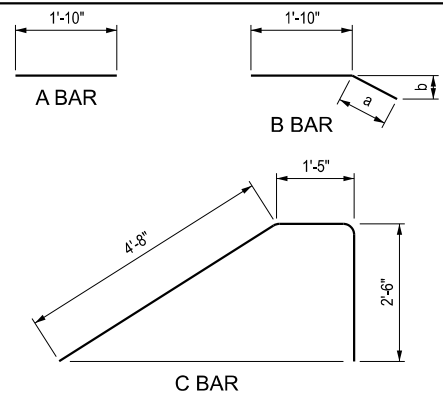
SPECIAL DETAIL FOR  
APPROACH CURB & GUTTER DOWNSPOUTS  
(FOR SAFETY SHAPE BRIDGE BARRIERS & RAILINGS)

FHWA APPROVAL

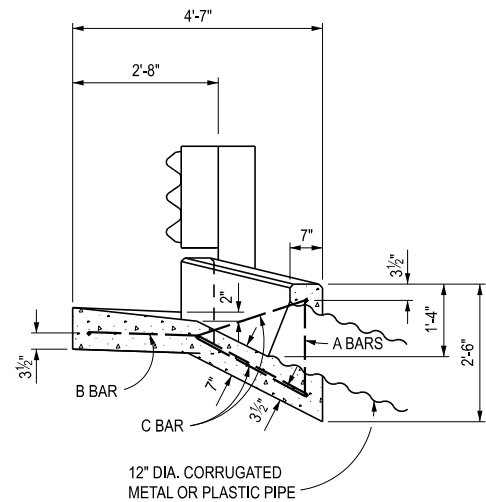
12/05/2025  
PLAN DATE

R-32-SD

SHEET  
3 OF 6

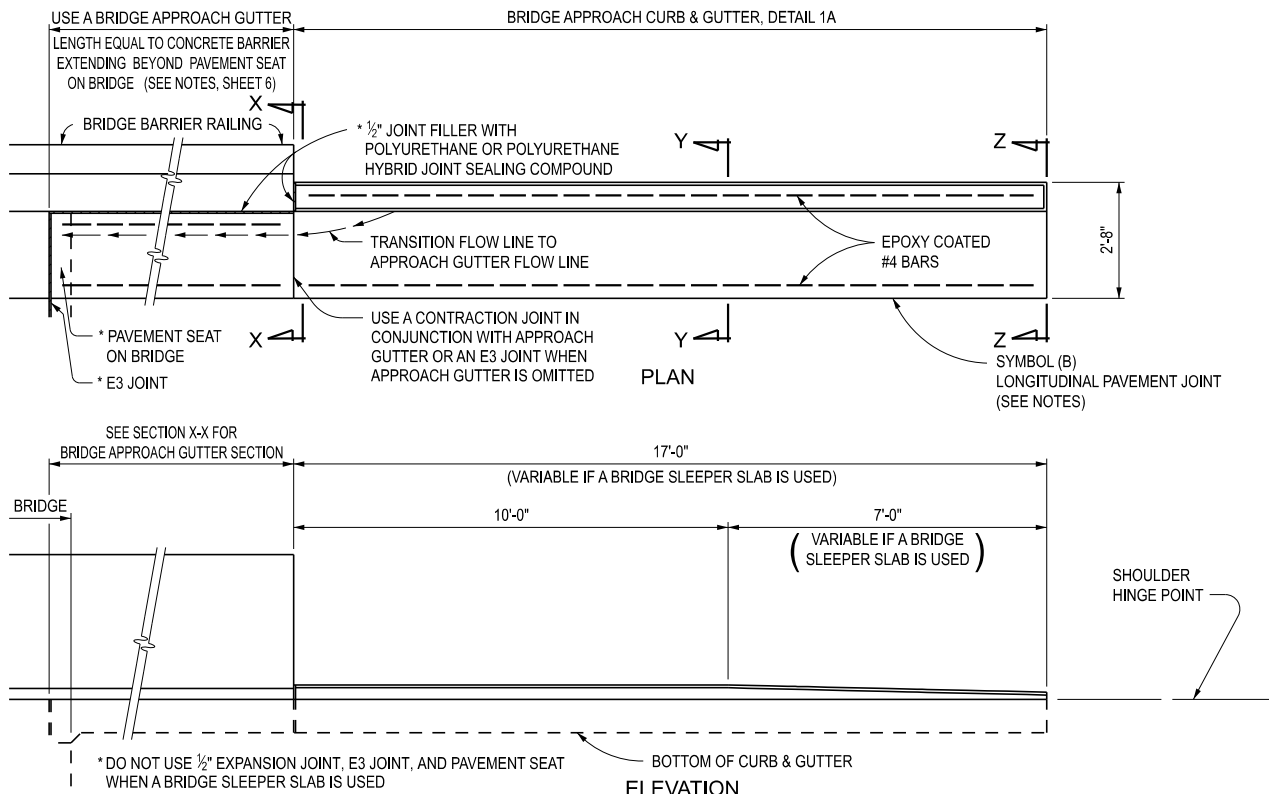


EPOXY COATED STEEL REINFORCEMENT FOR DOWNSPOUT					
BAR	DIMENSIONS		BAR SIZE	NUMBER REQUIRED	TOTAL LENGTH
	a	b			
A			#4	2	3'-8"
B1	11"	5"	#4	1	2'-9"
B2	1'-7"	8½"	#4	1	3'-5"
B3	2'-3"	1'-0"	#4	1	4'-1"
B4	2'-7"	1'-2"	#4	2	8'-10"
C			#4	2	17'-2"
TOTAL WEIGHT OF STEEL 26.7 LBS					



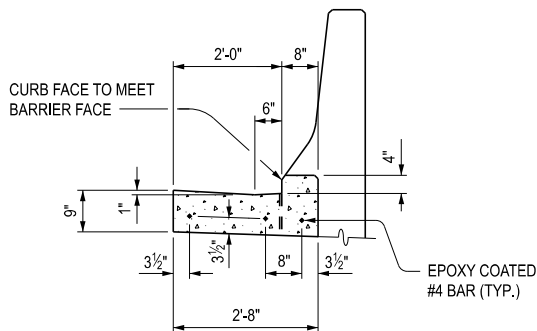
SECTION H - H



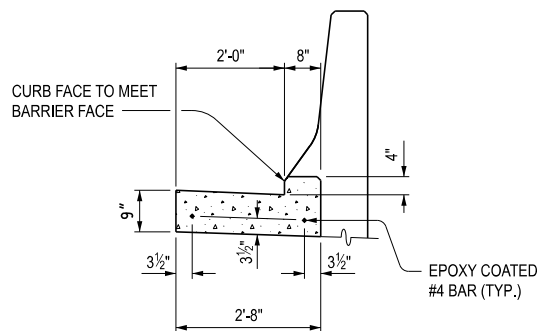


### BRIDGE APPROACH CURB & GUTTER, DETAIL 1A

NOTE: USE PRIMARILY WHEN GUARDRAIL IS NOT NEEDED ON DEPARTING ENDS, BUT CAN BE USED WITH GUARDRAIL WHEN DRAINAGE CONDITIONS ALLOW.



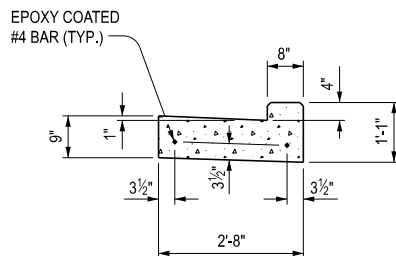
CROSS SECTION WHEN DEPARTING GUTTER IS USED



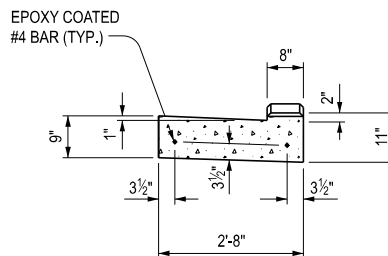
CROSS SECTION WHEN DEPARTING GUTTER IS NOT USED

### SECTION X - X

(SEE NOTES, SHEET 6)



SECTION Y - Y



SECTION Z - Z



DEPARTMENT DIRECTOR  
BRADLEY C. WIEFERICH, PE

### SPECIAL DETAIL FOR APPROACH CURB & GUTTER DOWNSPOUTS (FOR SAFETY SHAPE BRIDGE BARRIERS & RAILINGS)

FHWA APPROVAL


12/05/2025  
PLAN DATE

R-32-SD

SHEET  
5 OF 6

NOTES:

- SEE STANDARD SPECIFICATIONS FOR MATERIALS AND WORKMANSHIP FOR CONCRETE CURB AND GUTTER.
- SEE BRIDGE APPROACH PLANS FOR TYPE OF BRIDGE APPROACH CURB AND GUTTER AT SPECIFIC LOCATIONS.
- SEE STANDARD PLAN R-27-SERIES FOR BRIDGE APPROACH CURB AND GUTTER USING EXISTING CATCH BASIN.
- INCLUDE THE LENGTH OF BRIDGE APPROACH GUTTER (USED WHEN THE BRIDGE BARRIER RAILING EXTENDS BEYOND PAVEMENT SEAT ON BRIDGE) IN THE PAY ITEM "CURB AND GUTTER, BRIDGE APPROACH, DET \_\_". OMIT BRIDGE APPROACH GUTTER WHEN CONCRETE BARRIER ENDS AT PAVEMENT SEAT ON BRIDGE OR AT A SLEEPER SLAB. (SEE SECTION A-A)
- ALIGN THE CURB AND GUTTER WITH THE BEAM GUARDRAIL AS SPECIFIED ON STANDARD PLAN R-67-SERIES. DETERMINE THE LOCATION OF GUARDRAIL POSTS PRIOR TO LOCATING THE SPILLWAY OR DOWNSPOUT HEADER.
- SURFACE THE AREA BETWEEN THE EDGE OF THE PAVEMENT AND THE GUTTER WITH THE SAME MATERIAL AS THE SHOULDERS, EXCEPT IN THE CASE OF AGGREGATE SHOULDERS, WHERE A BITUMINOUS TREATMENT IS REQUIRED.
- INCLUDE ALL REQUIRED EXPANSION JOINTS IN THE PAY ITEM FOR BRIDGE APPROACH CURB AND GUTTER.
- SEE STANDARD PLAN R-30-SERIES FOR JOINT DETAILS.
- CHAMFER ALL EXPOSED EDGES  $\frac{3}{4}$ ".
- USE THE CONCRETE DOWNSPOUT HEADER IN CONJUNCTION WITH BRIDGE APPROACH CURB AND GUTTER, DETAILS 7 AND 7A.
- PAY FOR CORRUGATED PIPE SEPARATELY.
- WHEN THE DRAINAGE AREA REQUIRES ADDITIONAL CONCRETE DOWNSPOUT HEADERS, SPACE THE SECOND AND/OR ADDITIONAL DOWNSPOUT HEADERS ACCORDING TO THEIR INDIVIDUAL DRAINAGE AREAS. LOCATE ADDITIONAL DOWNSPOUT HEADERS BETWEEN GUARDRAIL POSTS AS SPECIFIED ON THE PLAN OF CONCRETE DOWNSPOUT HEADER.
- PLACE A SYMBOL (B) JOINT BETWEEN CURB OR CURB AND GUTTER AND ADJACENT CONCRETE PAVEMENT AS SPECIFIED ON STANDARD PLAN R-41-SERIES.
- THE 8" ALIGNMENT OFFSET IS REQUIRED FOR GUTTER PAN AND CURB FACE FOR BRIDGE RAILING, TYPE 4 OR TYPE 5 ONLY. OTHERWISE, ALIGN THE APPROACH CURB AND GUTTER WITH THE BARRIER FACE, BRUSH BLOCK, OR SIDEWALK CURB.

 Michigan Department of Transportation	SPECIAL DETAIL FOR APPROACH CURB & GUTTER DOWNSPOUTS (FOR SAFETY SHAPE BRIDGE BARRIERS & RAILINGS)			
	DEPARTMENT DIRECTOR BRADLEY C. WIEFERICH, PE	FHWA APPROVAL	12/05/2025 PLAN DATE	R-32-SD SHEET 6 OF 6