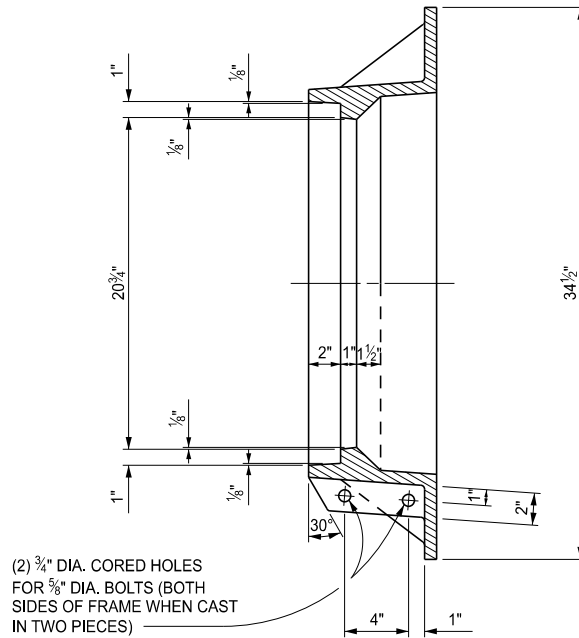


PLAN OF FRAME

NOTE:

FRAME MAY BE CAST MONOLITHICALLY OR
IN TWO PIECES AS SHOWN. ENSURE FRAMES
CAST IN TWO PIECES ARE TIGHTLY BOLTED
TOGETHER WHEN DELIVERED.



SECTION A - A

APPROVED BY: _____
DIRECTOR, BUREAU OF FIELD SERVICES

APPROVED BY: _____
DIRECTOR, BUREAU OF DEVELOPMENT



DEPARTMENT DIRECTOR
BRADLEY C. WIEFERICH, PE

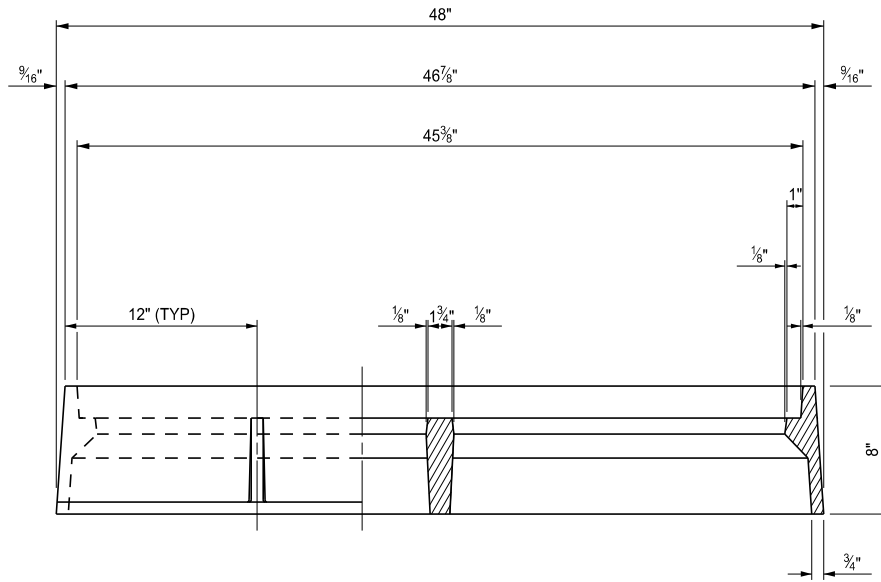
STANDARD PLAN FOR
COVER V

SPECIAL DETAIL
FHWA APPROVAL

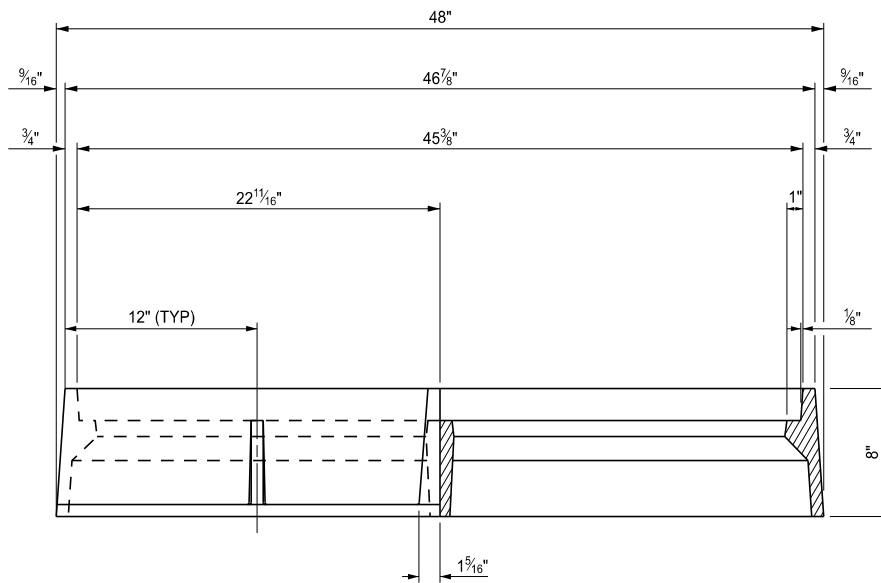
04/14/2025
PLAN DATE

R-22-G

SHEET
1 OF 4



SECTION B1 - B1
(CAST MONOLITHICALLY)



SECTION B2 - B2
(CAST IN TWO PIECES)



DEPARTMENT DIRECTOR
BRADLEY C. WIEFERICH, PE

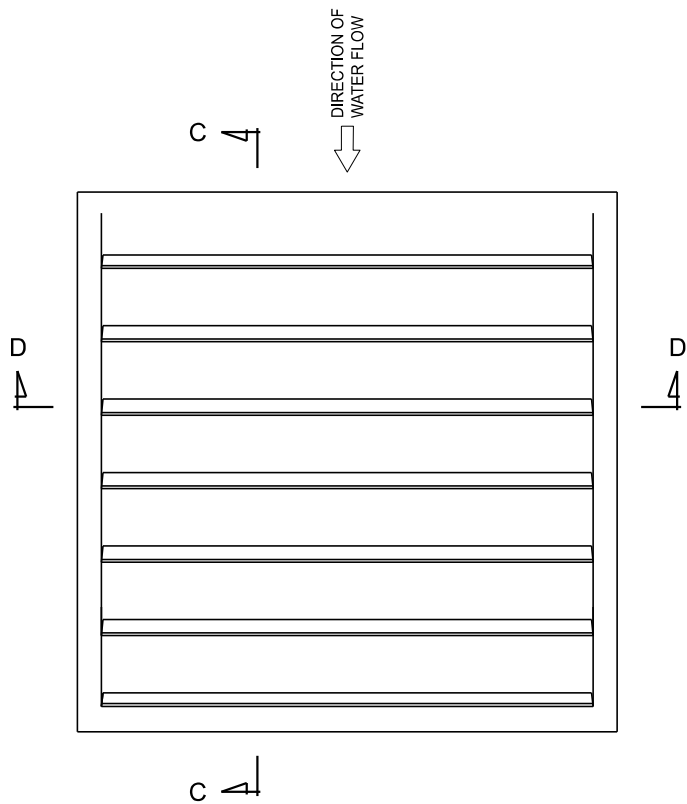
STANDARD PLAN FOR
COVER V

SPECIAL DETAIL
FHWA APPROVAL

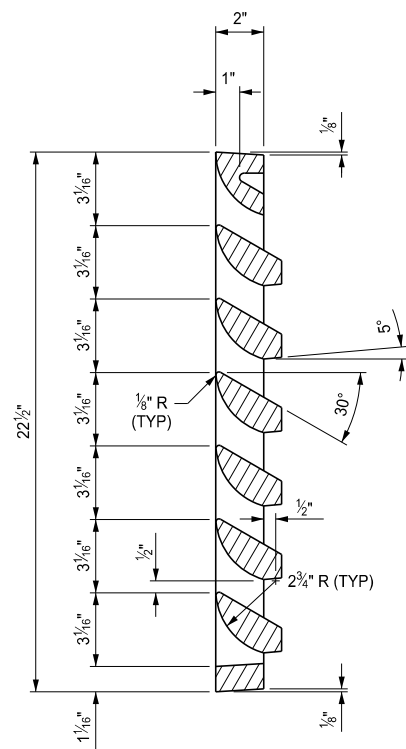
04/14/2025
PLAN DATE

R-22-G

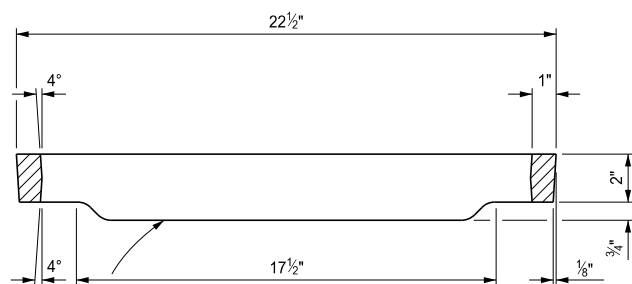
SHEET
2 OF 4



PLAN OF GRATE



SECTION C - C



ALTERNATE PROFILES PERMITTED

SECTION D - D

GRAY IRON CASTING



DEPARTMENT DIRECTOR
BRADLEY C. WIEFERICH, PE

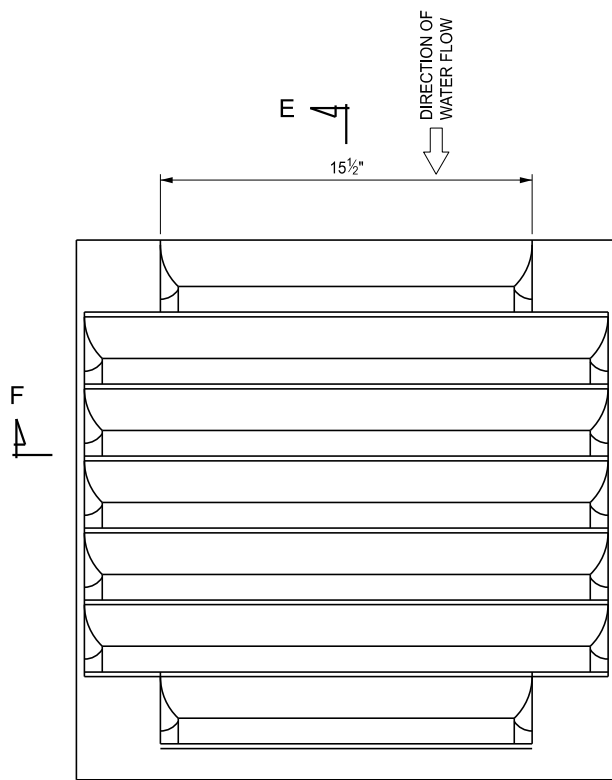
STANDARD PLAN FOR
COVER V

(SPECIAL DETAIL)
FHWA APPROVAL

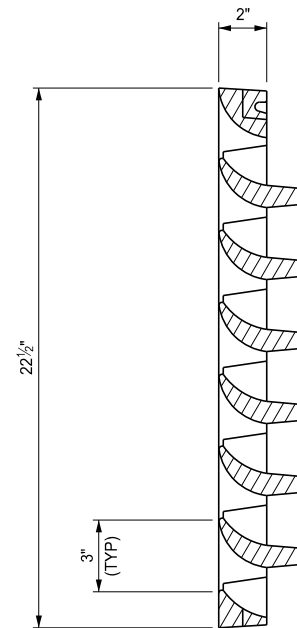
04/14/2025
PLAN DATE

R-22-G

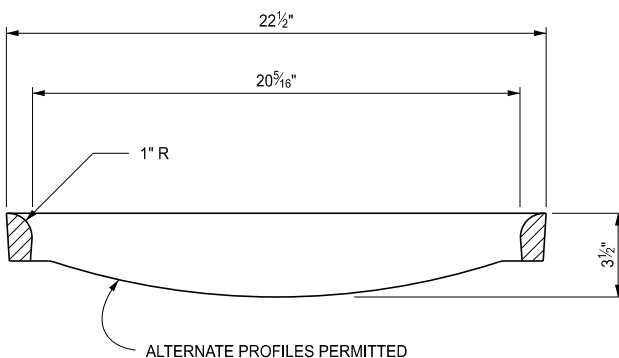
SHEET
3 OF 4



PLAN OF GRATE



SECTION E - E



SECTION F - F

DUCTILE IRON CASTING

NOTES:

ENSURE THE CASTINGS MEET THE REQUIREMENTS OF THE STANDARD SPECIFICATIONS FOR CONSTRUCTION FOR GRAY IRON OR DUCTILE IRON CASTINGS.

CLEAN ALL CASTINGS BY CURRENT APPROVED BLASTING METHODS.

ENSURE CASTINGS ARE FREE OF POURING FAULTS, BLOW HOLES, CRACKS, AND OTHER IMPERFECTIONS. ENSURE CASTINGS ARE SOUND, TRUE TO FORM AND THICKNESS, CLEAN AND NEATLY FINISHED, AND COATED WITH COAL TAR PITCH VARNISH.

GRIND OR MACHINE THE SEATING FACE OF GRATE AND THE SEAT FOR THE SAME ON THE FRAME SO THAT THE GRATE WILL HAVE AN EVEN BEARING ON ITS SEAT TO PREVENT ROCKING OR TILTING.

THIS COVER IS DESIGNED TO FIT ON ANY INLET, CATCH BASIN, OR ON ANY EXISTING SIMILAR STRUCTURE WHEN SO DESIGNATED ON THE PLANS.

GRATE MAY BE PROVIDED WITH BOLTING CAPABILITY. PROVIDE (4) COUNTER BORED HOLES, ONE AT EACH CORNER OF THE GRATE AND A FRAME WITH (4) THREADED HOLES TO SUFFICIENTLY RECEIVE GRATE BOLTS. ENSURE HOLE DIAMETERS AND BOLTS CONFORM TO THE MANUFACTURER'S DETAILS AND SPECIFICATIONS.



DEPARTMENT DIRECTOR
BRADLEY C. WIEFERICH, PE

STANDARD PLAN FOR COVER V

(SPECIAL DETAIL)
FHWA APPROVAL

04/14/2025
PLAN DATE

R-22-G

SHEET
4 OF 4