

BRIDGE BARRIER RAILING, TYPE 7 OUTSIDE ELEVATION

APPROVED BY: _____
DIRECTOR, BUREAU OF BRIDGES AND STRUCTURES

APPROVED BY: _____
DIRECTOR, BUREAU OF FIELD SERVICES

APPROVED BY: _____
DIRECTOR, BUREAU OF DEVELOPMENT



DEPARTMENT DIRECTOR
BRADLEY C. WIEFERICH, PE

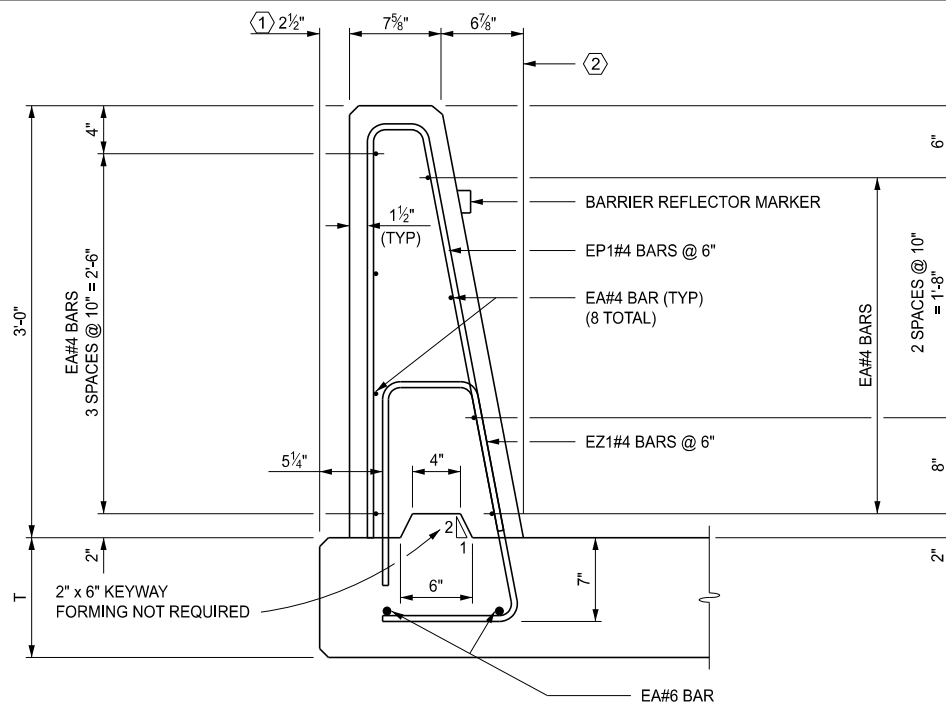
STANDARD PLAN FOR
BRIDGE BARRIER RAILING, TYPE 7

(SPECIAL DETAIL)
FHWA APPROVAL

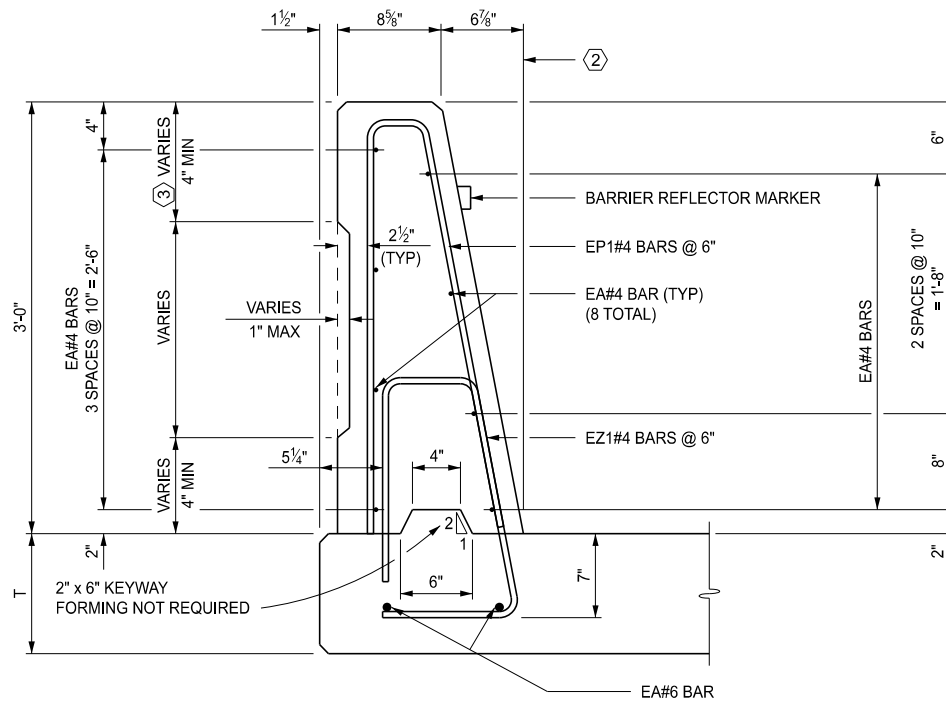
12/17/2025
PLAN DATE

B-28-A

SHEET
1 OF 7



SECTION A-A
NO AESTHETIC TREATMENT



SECTION A-A

BRIDGE BARRIER RAILING, AESTHETIC, TYPE 7, DET 2

(THE TYPE AND LIMITS OF THE AESTHETIC TREATMENT,)
IF APPLICABLE, ARE AS DETAILED ON THE PLANS.

- ① BACK OF BARRIER TO SLAB FASCIA MAY BE DECREASED TO 1 1/2" (FROM 2 1/2") AND TOE OF BARRIER SHIFTED ACCORDINGLY TO ACCOMMODATE THE NEED FOR INCREASED OR MAINTAINING SHOULDER WIDTHS. DISTANCE TO BE DETAILED ON THE PLANS.
- ② BRIDGE BARRIER ORIENTATION :
PERPENDICULAR TO PLANE OF SLAB ON NORMAL CROWN SECTION AND HIGH SIDE OF SUPERELEVATION SECTION.
VERTICAL ON LOW SIDE OF SUPERELEVATED SECTION.
- ③ USE 10" MINIMUM WHEN PEDESTRIAN FENCE IS INSTALLED TO ACCOMMODATE THE DEPTH OF ANCHOR BOLTS. DISTANCE TO BE DETAILED ON THE PLANS.



DEPARTMENT DIRECTOR
BRADLEY C. WIEFERICH, PE

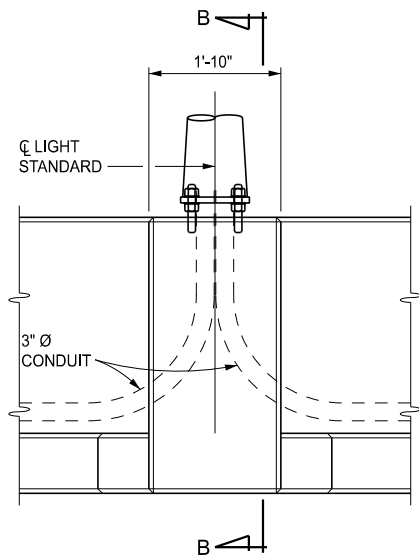
STANDARD PLAN FOR
BRIDGE BARRIER RAILING, TYPE 7

(SPECIAL DETAIL)
FHWA APPROVAL

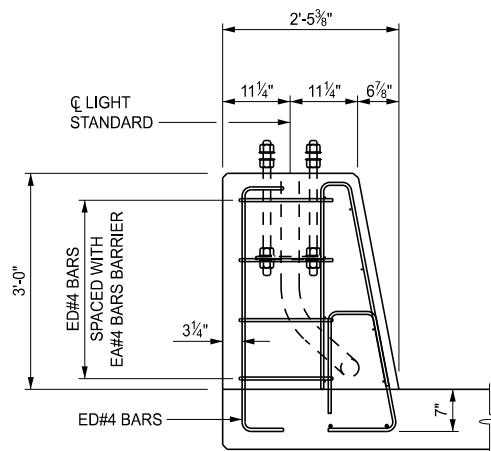
12/17/2025
PLAN DATE

B-28-A

SHEET
2 OF 7



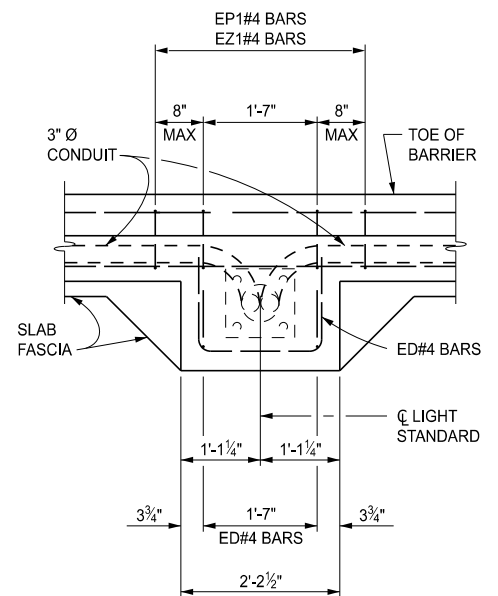
ELEVATION VIEW



SECTION B-B

LIGHT STANDARD DETAILS

NO AESTHETIC TREATMENT ON LIGHT STANDARD 2'-2 1/2" x 1'-2 7/8" PROTRUSION



PLAN VIEW



DEPARTMENT DIRECTOR
BRADLEY C. WIEFERICH, PE

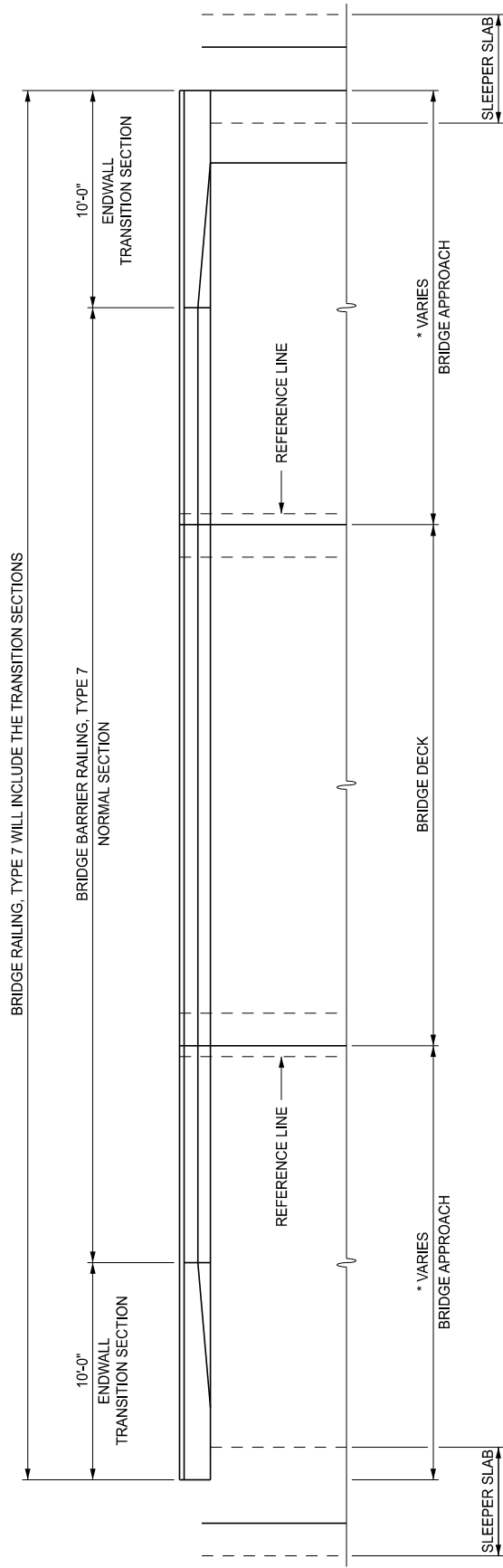
STANDARD PLAN FOR
BRIDGE BARRIER RAILING, TYPE 7

(SPECIAL DETAIL)
FHWA APPROVAL

12/17/2025
PLAN DATE

B-28-A

SHEET
3 OF 7



BRIDGE BARRIER RAILING, TYPE 7 PLAN VIEW

* DEPENDANT UPON BRIDGE APPROACH LENGTH, THE TRANSITION SECTION CAN BE PARTLY ON BRIDGE DECK OR IF NO APPROACH SLAB IS PRESENT, ENTIRELY ON THE BRIDGE DECK.



DEPARTMENT DIRECTOR
BRADLEY C. WIEFERICH, PE

STANDARD PLAN FOR BRIDGE BARRIER RAILING, TYPE 7

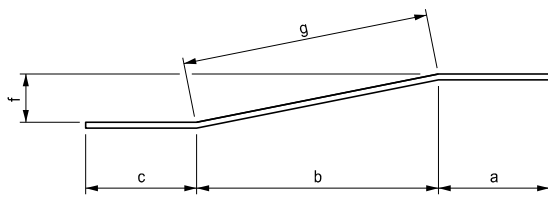
(SPECIAL DETAIL)
FHWA APPROVAL

12/17/2025
PLAN DATE

B-28-A

SHEET
4 OF 7





ENDWALL TRANSITION SECTION BARS							
	# of bars	c	b	a	g	j	
EA1	1	—	—	11'-11"	—	—	EA041111
EW1	1	3'-0"	5'-6"	3'-5"	5'-6"	1 ⁷ / ₈ "	EW041111
EW2	1	3'-0"	5'-6"	3'-5 ⁷ / ₈ "	5'-6 ¹ / ₈ "	3 ⁷ / ₈ "	EW041200
EW3	1	3'-0"	5'-6"	3'-6 ³ / ₄ "	5'-6 ¹ / ₄ "	5 ³ / ₄ "	EW041201

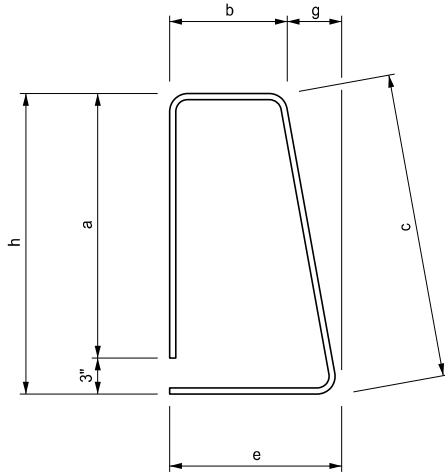
$$L = c + a + g$$

BARRIER SECTION BARS							
	# of bars	a	b	c	e	g	h - a
EZ1	—	1'-5"	7 ³ / ₈ "	1'-8 ³ / ₈ "	11 ¹ / ₄ "	3 ⁵ / ₈ "	1'-8"

$$L = a + b + c + e$$

ENDWALL TRANSITION SECTION BARS							
	# of bars	a	b	c	e	g	h - a
EZ1	3	1'-5"	7 ³ / ₈ "	1'-8 ³ / ₈ "	11 ¹ / ₄ "	3 ⁵ / ₈ "	1'-8"
EZ2	4	1'-5"	7 ⁷ / ₈ "	1'-8 ¹ / ₂ "	10 ⁷ / ₈ "	2 ⁷ / ₈ "	1'-8"
EZ3	4	1'-5"	8 ³ / ₄ "	1'-8"	10 ¹ / ₄ "	1 ¹ / ₂ "	1'-8"
EZ4	9	1'-5"	10 ¹ / ₂ "	1'-8"	10 ¹ / ₂ "	—	1'-8"

$$L = a + b + c + e$$

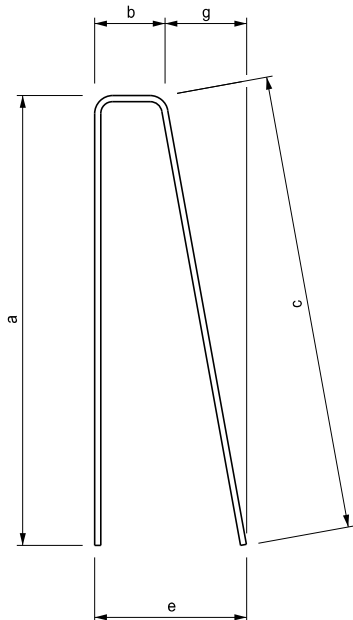


BARRIER SECTION BARS							
	# of bars	a	b	c	e	g	
EP1	—	2'-10 ¹ / ₄ "	4 ³ / ₄ "	2'-11"	11"	6 ¹ / ₄ "	EP040602

$$L = a + b + c$$

ENDWALL TRANSITION SECTION BARS							
	# of bars	a	b	c	e	g	
EP1	3	2'-10 ¹ / ₄ "	4 ³ / ₄ "	2'-11"	11"	6 ¹ / ₄ "	EP040602
EP2	4	2'-9 ⁷ / ₈ "	6 ¹ / ₄ "	2'-10 ⁷ / ₈ "	11"	4 ³ / ₄ "	EP040603
EP3	4	2'-10 ¹ / ₈ "	8 ¹ / ₄ "	2'-10 ⁵ / ₈ "	11"	2 ³ / ₄ "	EP040605
EP4	9	2'-10 ¹ / ₂ "	11"	2'-10 ¹ / ₂ "	11"	—	EP040608

$$L = a + b + c$$



NOTES:

DETAILS SHOWN ARE ACCORDING TO AASHTO SPECIFICATIONS.

SEE STANDARD PLAN B-103-SERIES FOR LIGHT STANDARD ANCHOR BOLT ASSEMBLY DETAILS,

ALL WORK AND MATERIAL ARE ACCORDING TO THE STANDARD SPECIFICATIONS FOR CONSTRUCTION.



DEPARTMENT DIRECTOR
BRADLEY C. WIEFERICH, PE

STANDARD PLAN FOR BRIDGE BARRIER RAILING, TYPE 7

(SPECIAL DETAIL)
FHWA APPROVAL

12/17/2025
PLAN DATE

B-28-A

SHEET
7 OF 7