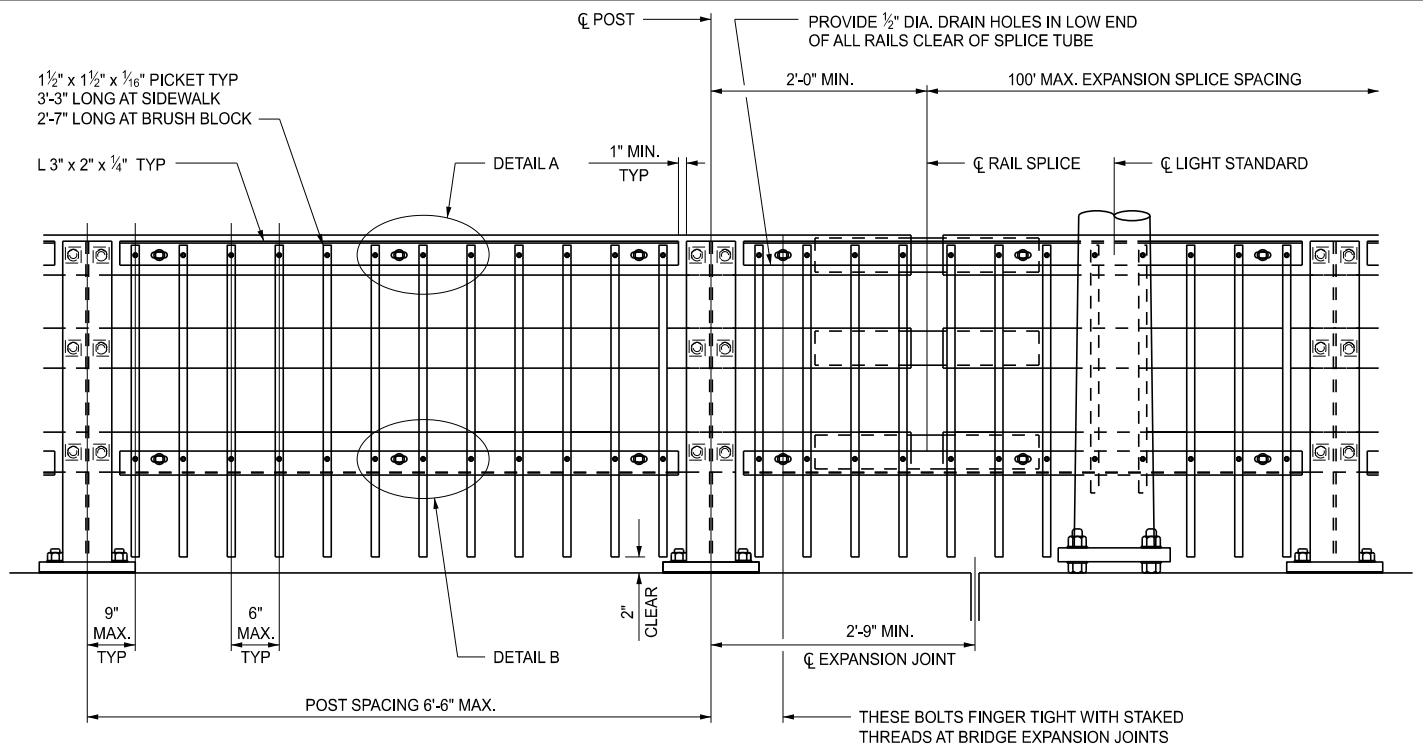
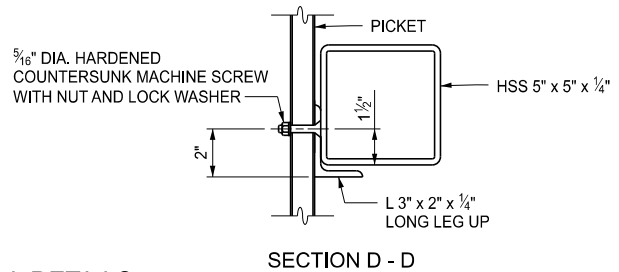
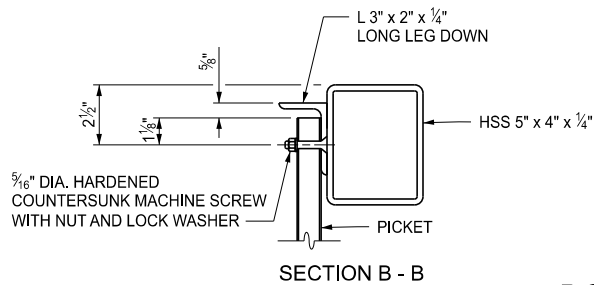
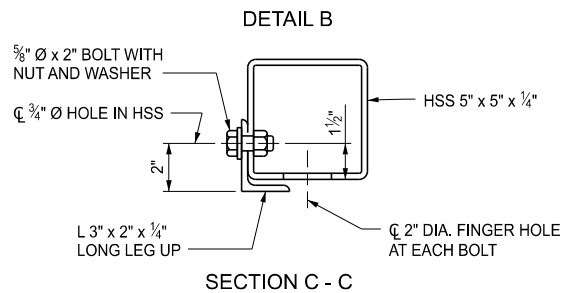
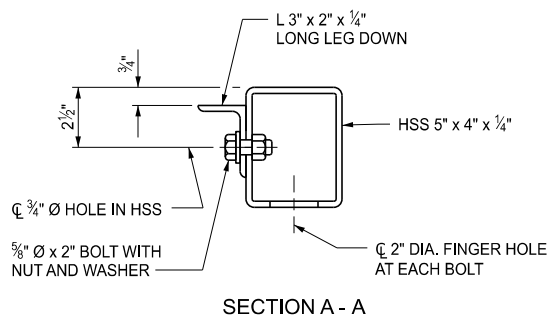
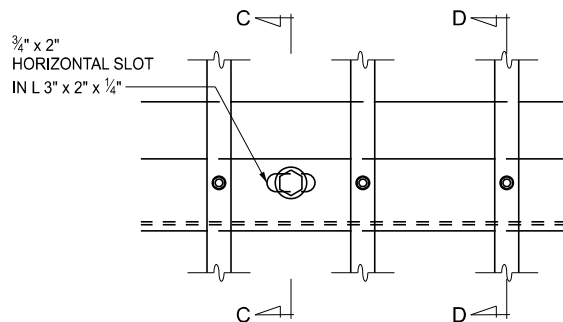
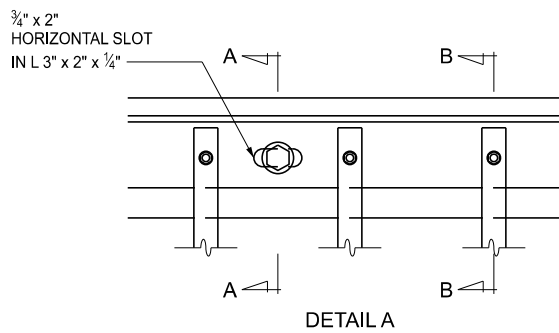




SHEET  
1 OF 7



**RAILING ELEVATION**  
(AT SIDEWALK SHOWN)



**PICKET TO RAIL DETAILS**



DEPARTMENT DIRECTOR  
BRADLEY C. WIEFERICH, PE

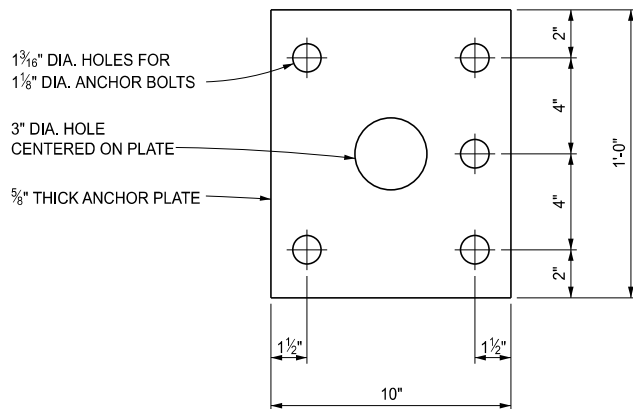
STANDARD PLAN FOR  
BRIDGE RAILING,  
3 TUBE WITH PICKETS

(SPECIAL DETAIL)  
FHWA APPROVAL

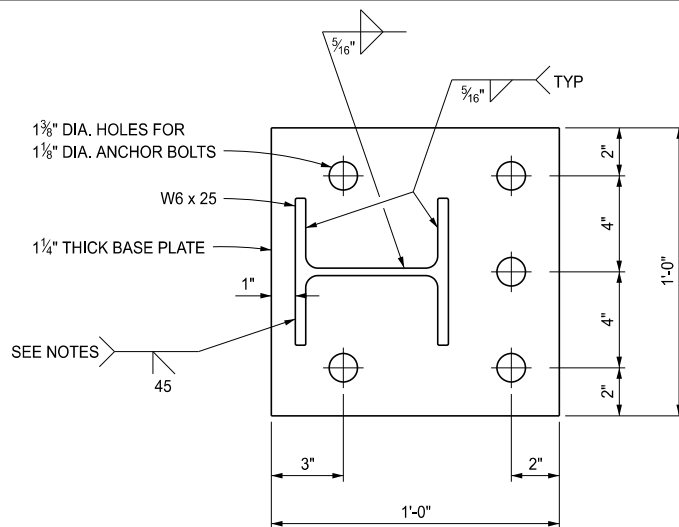
09/11/2024  
PLAN DATE

**B-27-B**

SHEET  
2 OF 7

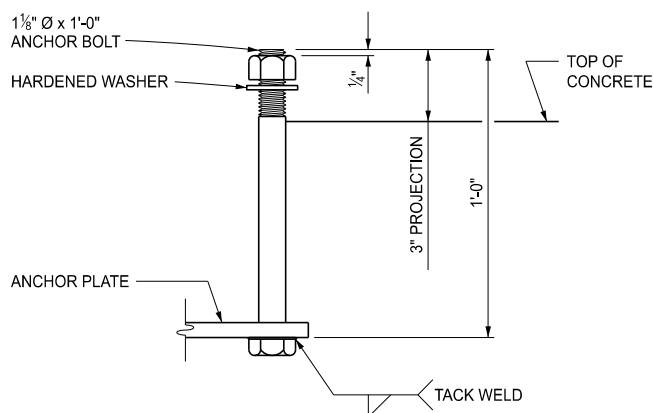


ANCHOR PLATE

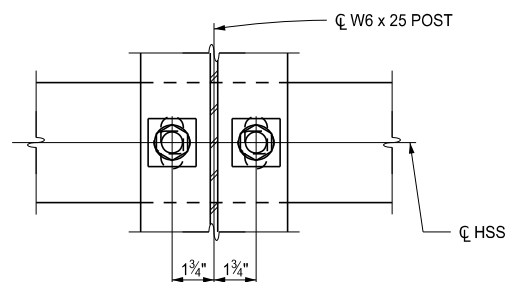


BASE PLATE

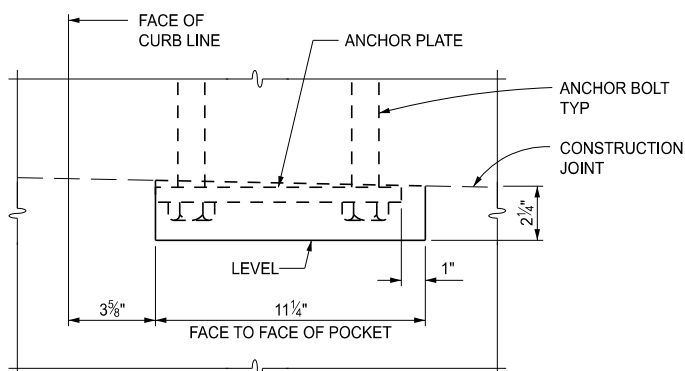
NOTE:  
POST FLANGE WELD DOES NOT REQUIRE MAGNETIC PARTICLE TESTING. WELD SHALL BE BACK-GOUGED ON BACK SIDE EXCEPT AT WEB. WELD IS THE SAME ON BOTH FLANGES.



ANCHOR BOLT

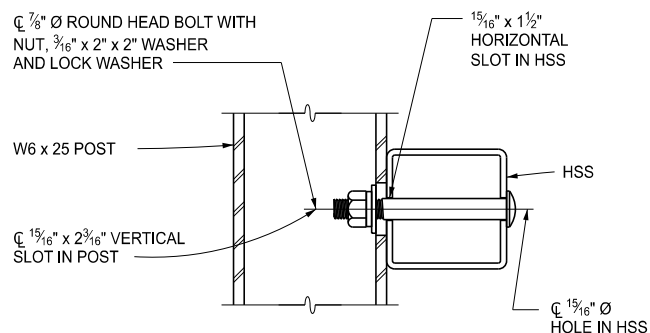


SECTION THROUGH POST WEB



DETAIL A

NOTE:  
PROVIDE 15 3/4" LONG x 11 1/4" WIDE x 2 1/4" DEEP POCKET IN THE DECK SLAB AT THE LOCATION OF EACH RAIL POST. USE AT BRUSH BLOCK SECTION AND AT SIDEWALK FASCIA LESS THAN 10".



SECTION THROUGH RAIL

RAIL TO POST CONNECTIONS



DEPARTMENT DIRECTOR  
BRADLEY C. WIEFERICH, PE

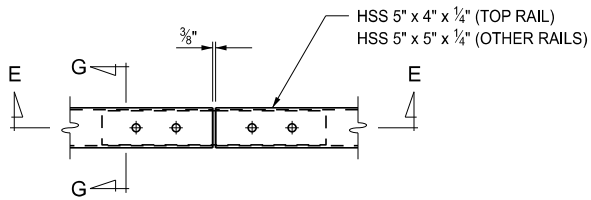
STANDARD PLAN FOR  
BRIDGE RAILING,  
3 TUBE WITH PICKETS

(SPECIAL DETAIL)  
FHWA APPROVAL

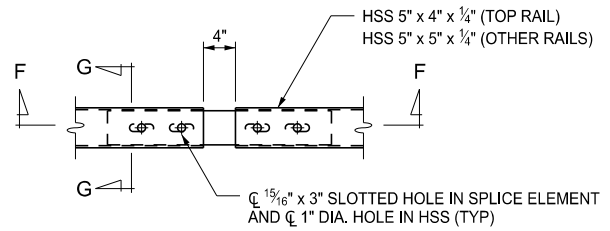
09/11/2024  
PLAN DATE

B-27-B

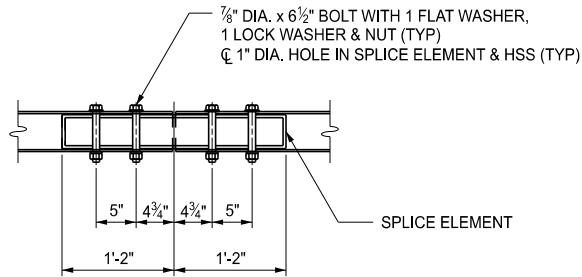
SHEET  
3 OF 7



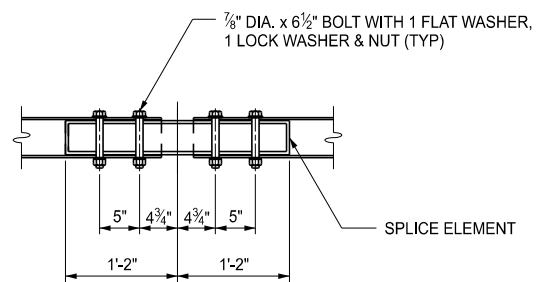
FIXED SPLICE PLAN



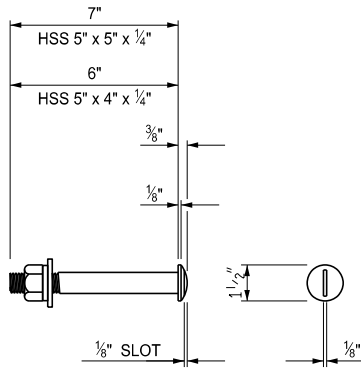
EXPANSION SPLICE PLAN



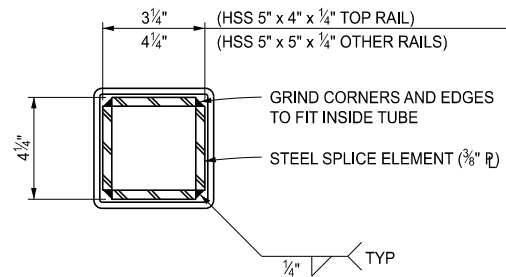
SECTION E - E



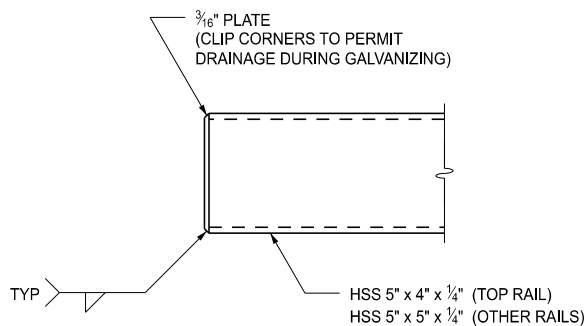
SECTION F - F



7/8" Ø ROUND HEAD BOLT



SECTION G - G



END OF RAIL DETAIL



DEPARTMENT DIRECTOR  
BRADLEY C. WIEFERICH, PE

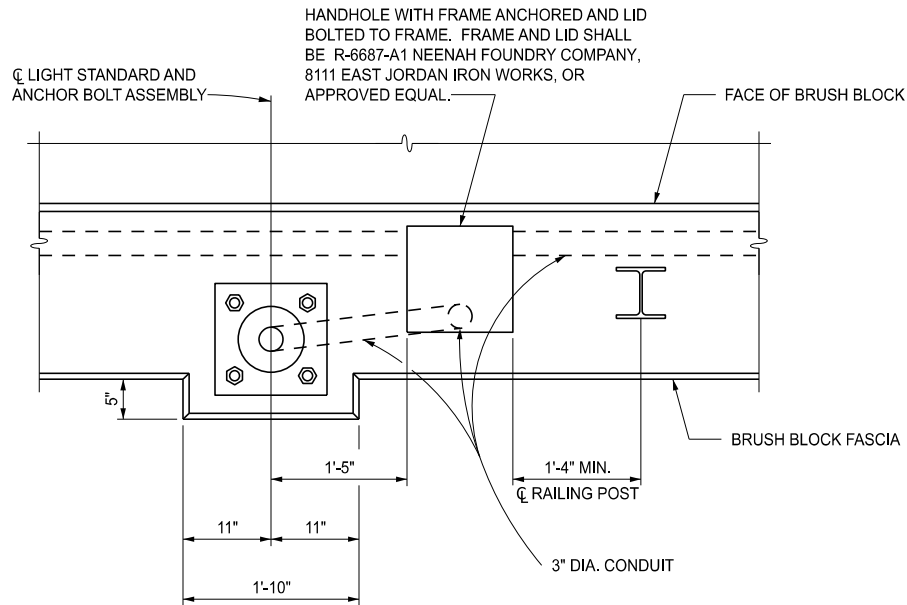
STANDARD PLAN FOR  
BRIDGE RAILING,  
3 TUBE WITH PICKETS

(SPECIAL DETAIL)  
FHWA APPROVAL

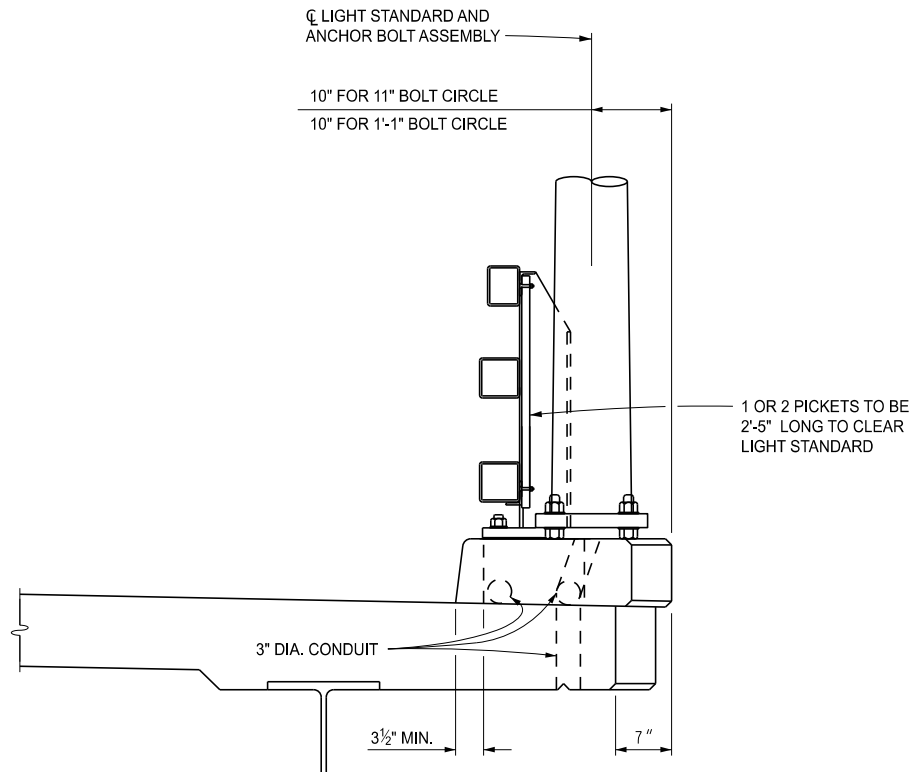
09/11/2024  
PLAN DATE

B-27-B

SHEET  
4 OF 7



PLAN VIEW AT LIGHT STANDARD WITH BRUSH BLOCK



SECTION AT LIGHT STANDARD WITH BRUSH BLOCK



DEPARTMENT DIRECTOR  
BRADLEY C. WIEFERICH, PE

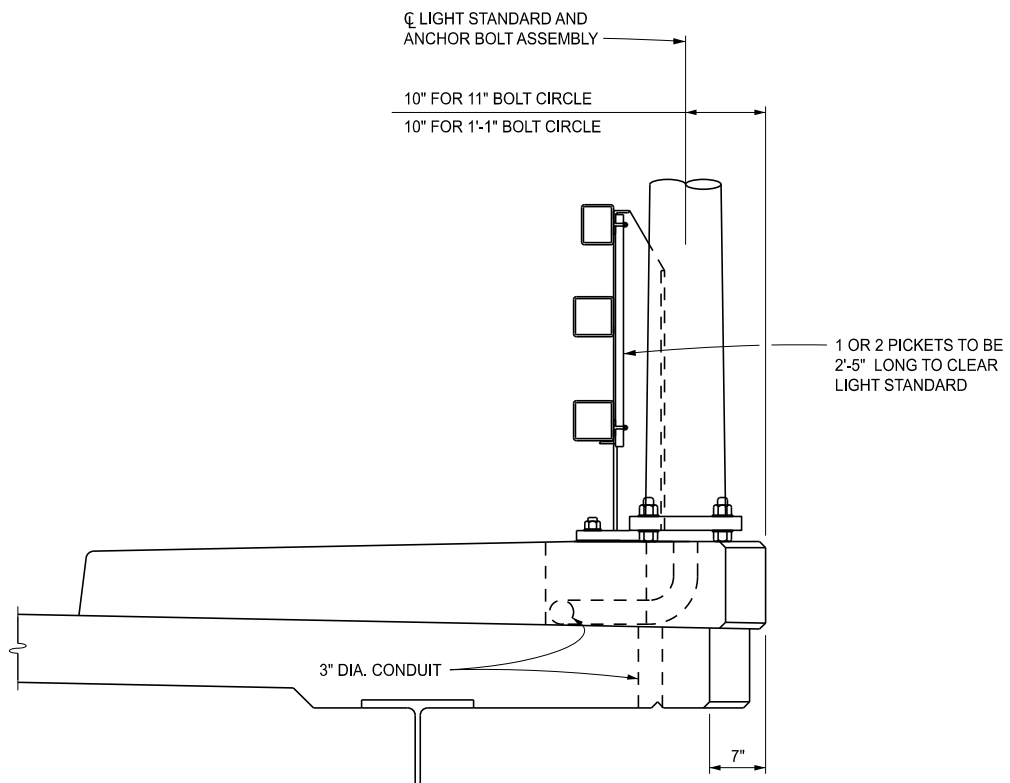
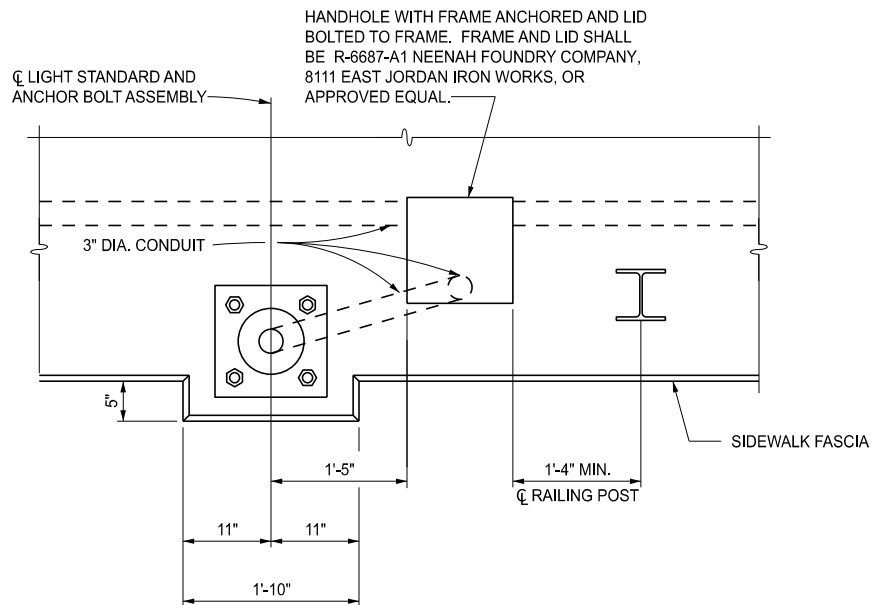
STANDARD PLAN FOR  
BRIDGE RAILING,  
3 TUBE WITH PICKETS

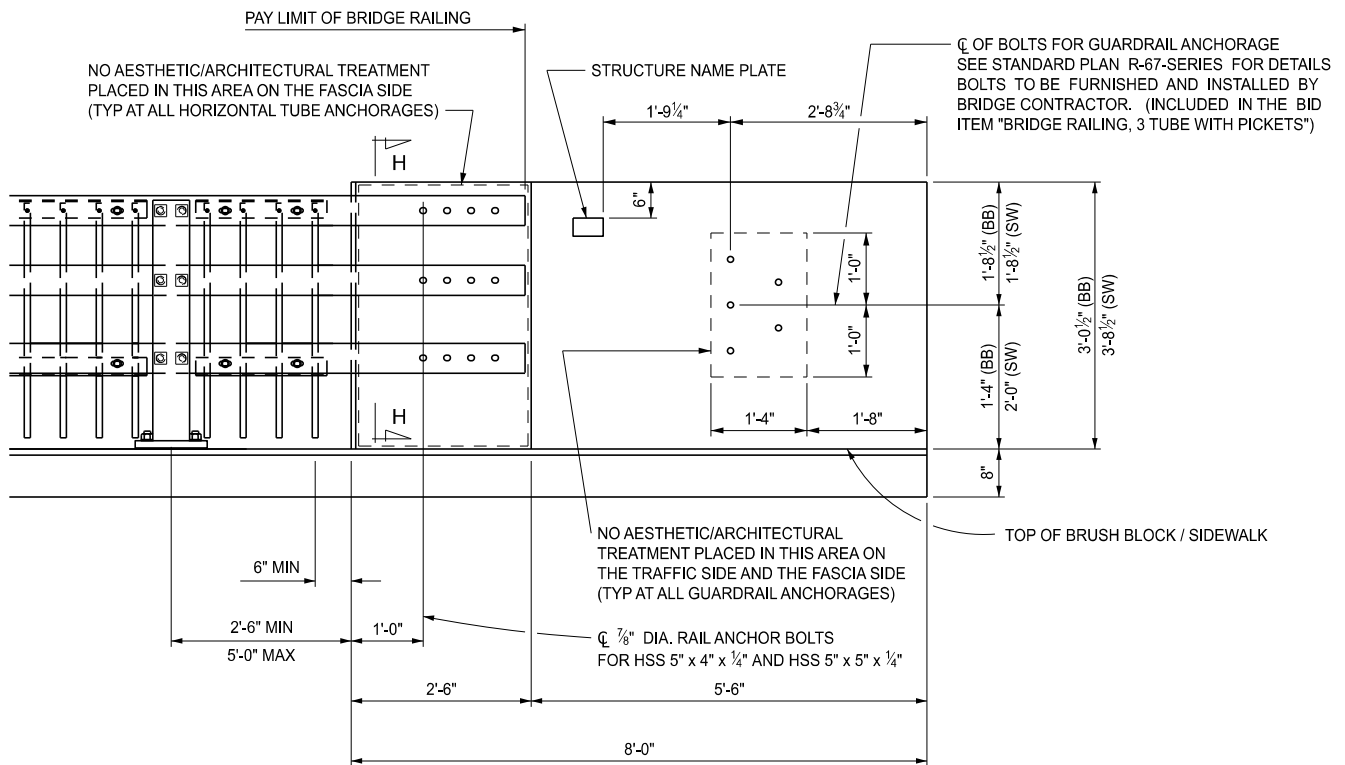
(SPECIAL DETAIL)  
FHWA APPROVAL

09/11/2024  
PLAN DATE

B-27-B

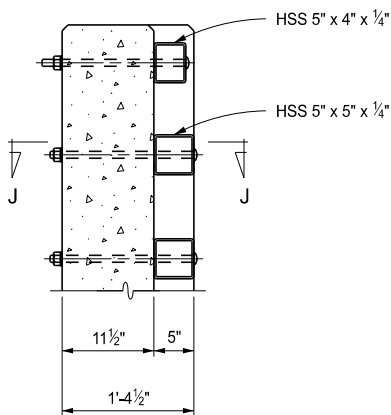
SHEET  
5 OF 7



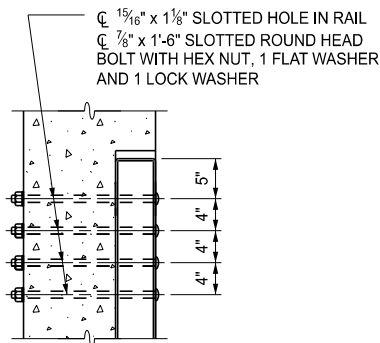


### END WALL ELEVATION

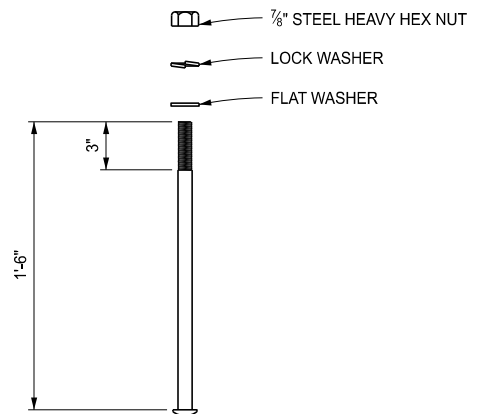
BB = BRUSH BLOCK  
SW = SIDEWALK



SECTION H - H



SECTION J - J



7/8" Ø ROUND HEAD BOLT

#### NOTES:

RAILS SHALL BE CONTINUOUS OVER A MINIMUM OF FOUR (4) POSTS WITHOUT SPLICES WHERE POSSIBLE. RAILS SHALL BE SPLICED IN A PANEL OVER EXPANSION JOINTS.

DETAILS SHOWN ARE ACCORDING TO THE AASHTO SPECIFICATIONS.

ALL WORK AND MATERIAL SHALL BE ACCORDING TO THE STANDARD SPECIFICATIONS FOR CONSTRUCTION UNLESS OTHERWISE NOTED ON THIS PLAN.



DEPARTMENT DIRECTOR  
BRADLEY C. WIEFERICH, PE

### STANDARD PLAN FOR BRIDGE RAILING, 3 TUBE WITH PICKETS

(SPECIAL DETAIL)  
FHWA APPROVAL

09/11/2024  
PLAN DATE

**B-27-B**

SHEET  
7 OF 7