

BRIDGE RAILING WITH SIDEWALK



DEPARTMENT DIRECTOR
BRADLEY C. WIEFERICH, PE

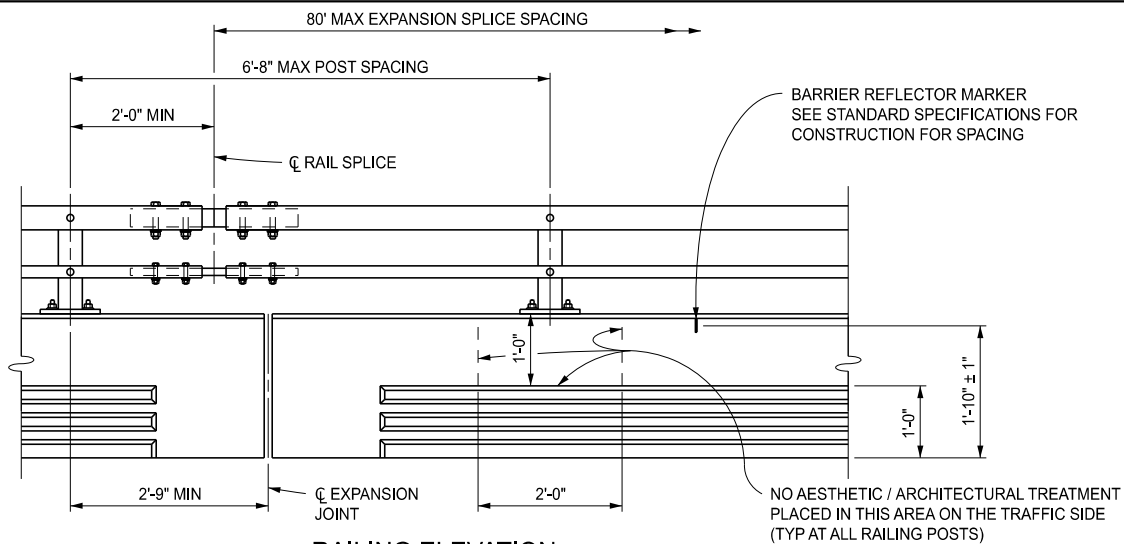
STANDARD PLAN FOR
BRIDGE RAILING, AESTHETIC PARAPET TUBE

(SPECIAL DETAIL)
FHWA APPROVAL

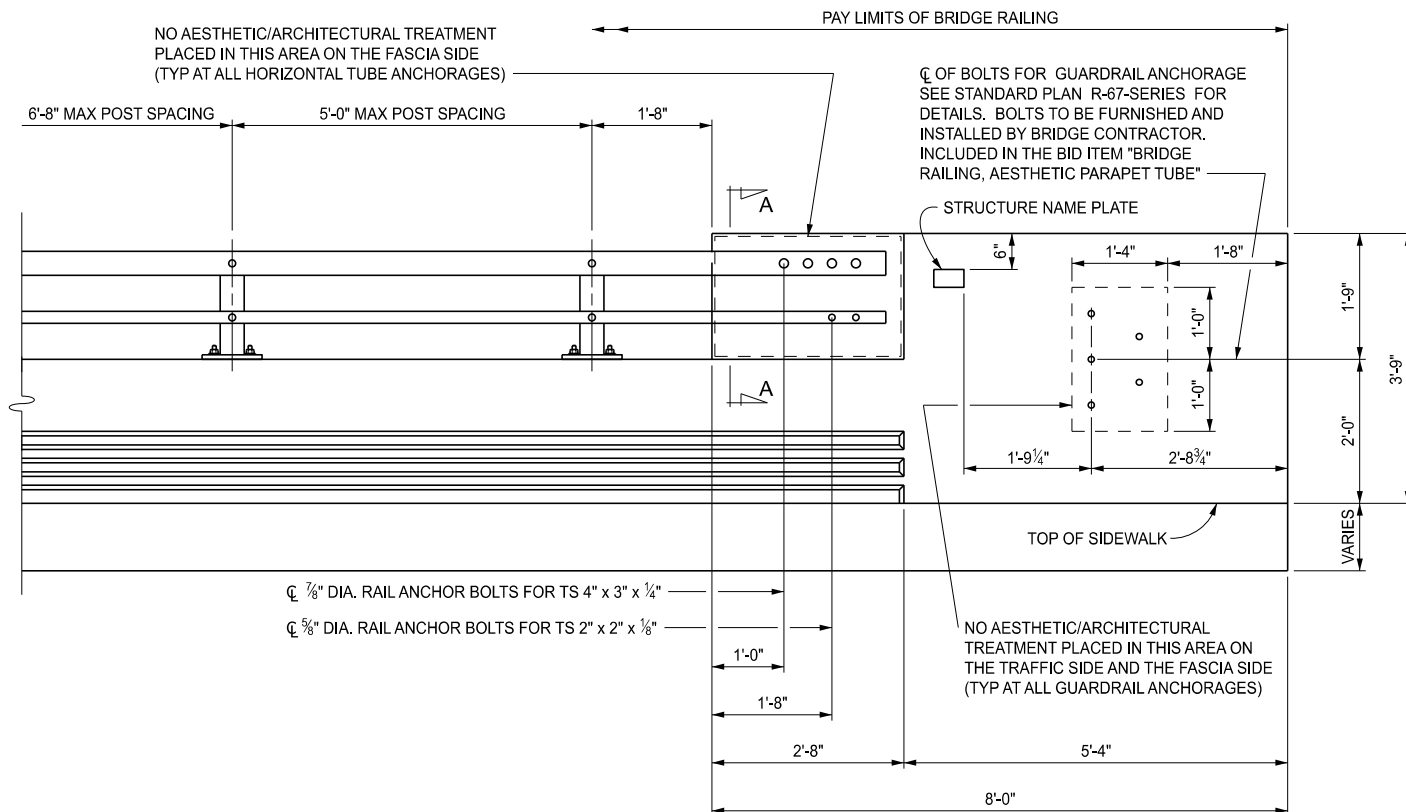
09/09/2024
PLAN DATE

B-25-L

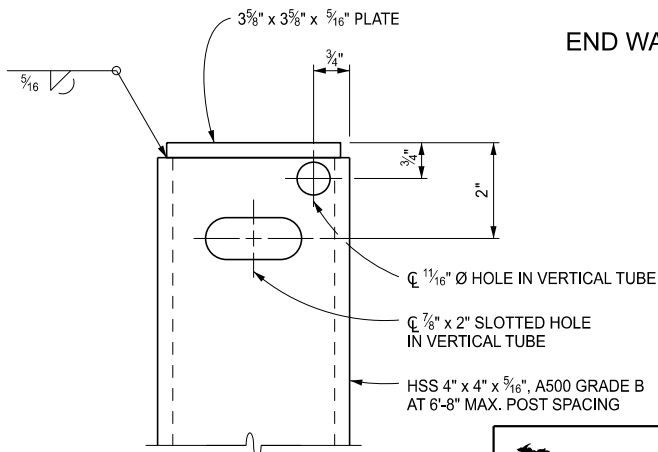
SHEET
2 OF 8



RAILING ELEVATION



END WALL ELEVATION



VERTICAL TUBE DETAIL
FRONT VIEW



DEPARTMENT DIRECTOR
BRADLEY C. WIEFERICH, PE

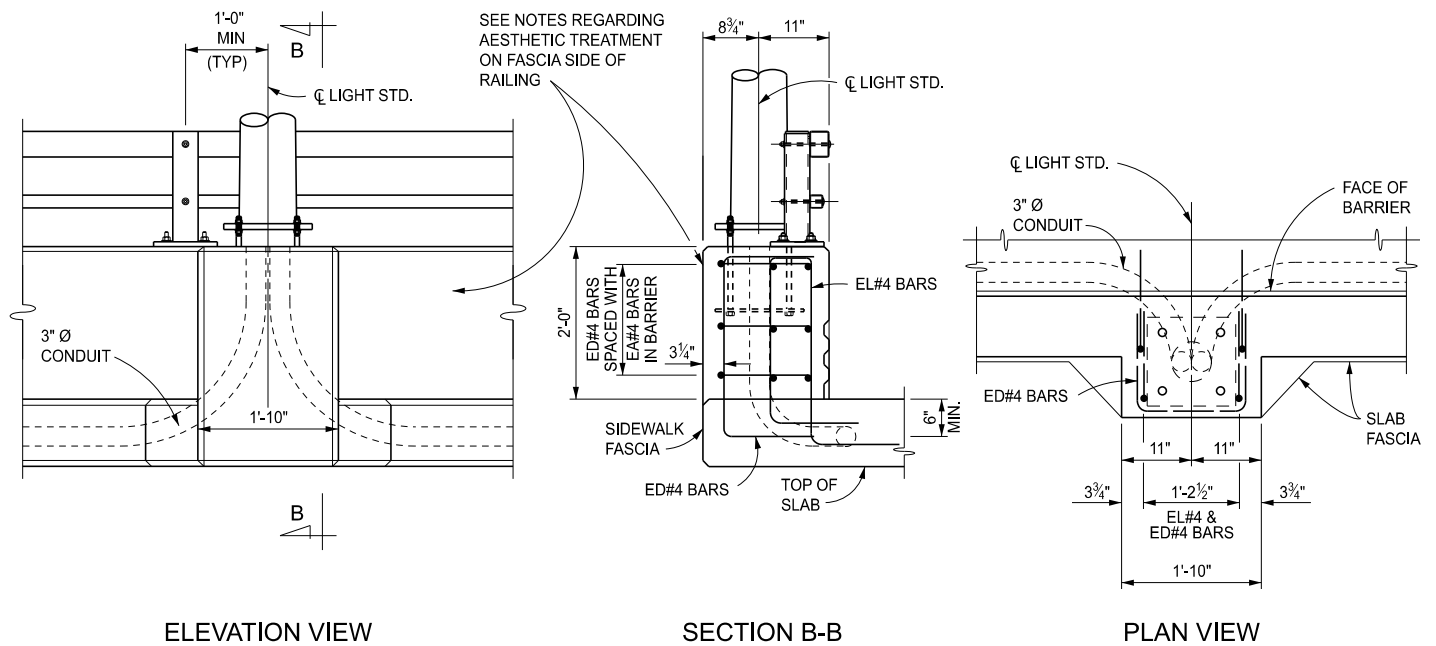
STANDARD PLAN FOR
BRIDGE RAILING, AESTHETIC PARAPET TUBE

(SPECIAL DETAIL)
FHWA APPROVAL

09/09/2024
PLAN DATE

B-25-L

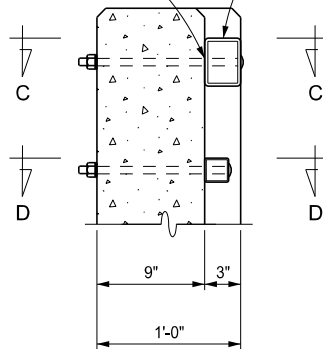
SHEET
3 OF 8



LIGHT STANDARD DETAILS

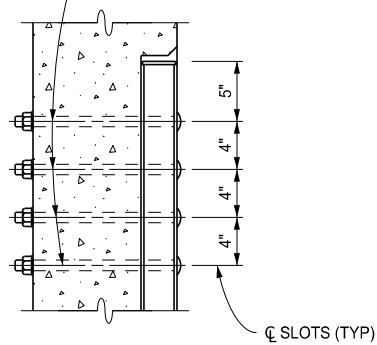
THREADS SHALL BE EXCLUDED FROM SHEAR PLANE (TYP)

HSS 4" x 3" x 1/4", A500 GRADE B



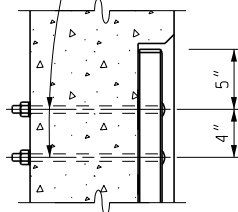
SECTION A-A

CL 1 1/16" x 1 1/8" SLOTTED HOLE IN RAIL,
CL 7/8" Ø x 1'-2" SLOTTED ROUND
HEAD BOLTS WITH HEX. NUT, 1 FLAT
WASHER, 1 LOCK WASHER (TYP)



SECTION C-C

CL 1 1/16" x 7/8" SLOTTED HOLE IN RAIL,
CL 5/8" Ø x 1'-0 3/4" SLOTTED ROUND
HEAD BOLTS WITH HEX. NUT, 1 FLAT
WASHER, 1 LOCK WASHER (TYP)



SECTION D-D



DEPARTMENT DIRECTOR
BRADLEY C. WIEFERICH, PE

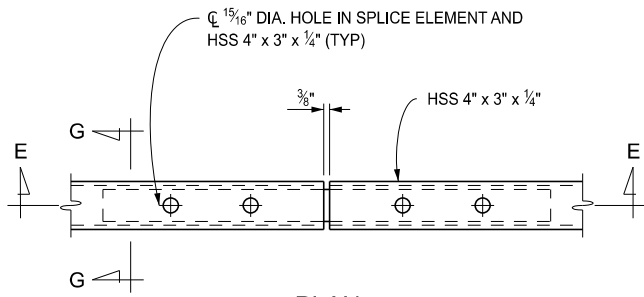
STANDARD PLAN FOR
BRIDGE RAILING, AESTHETIC PARAPET TUBE

(SPECIAL DETAIL)
FHWA APPROVAL

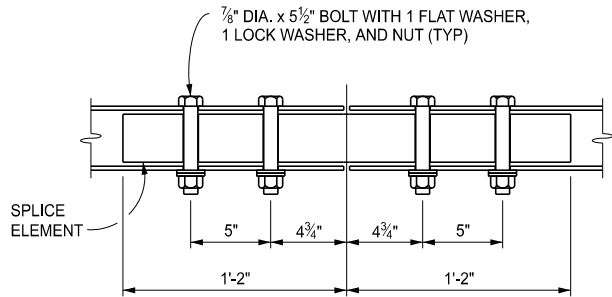
09/09/2024
PLAN DATE

B-25-L

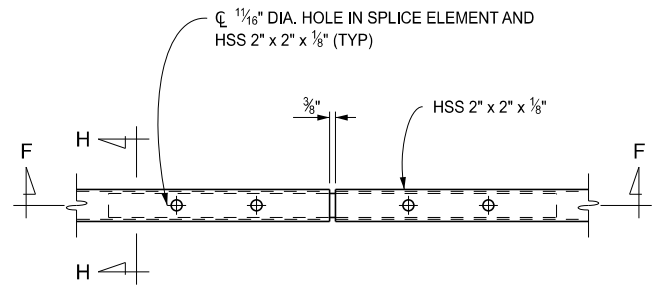
SHEET
4 OF 8



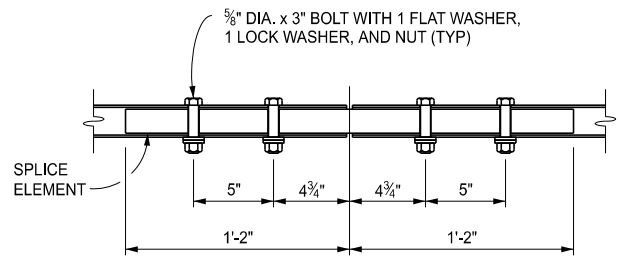
PLAN
HSS 4" x 3" x 1/4"



SECTION E-E
HSS 4" x 3" x 1/4"

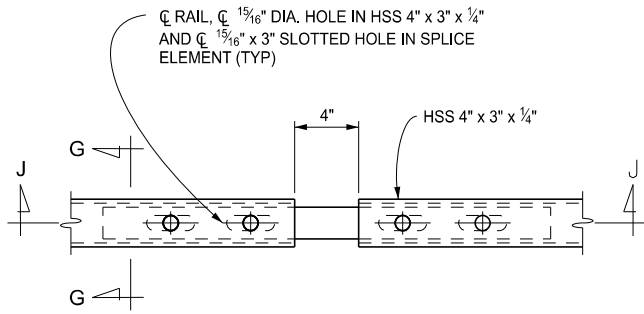


PLAN
HSS 2" x 2" x 1/8"

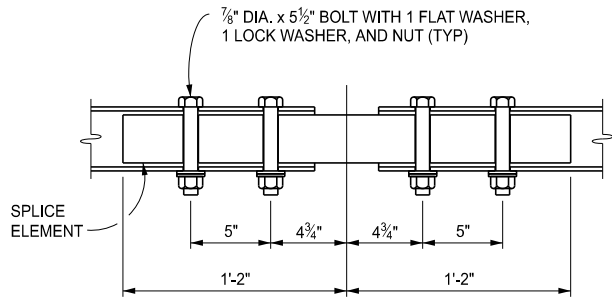


SECTION F-F
HSS 2" x 2" x 1/8"

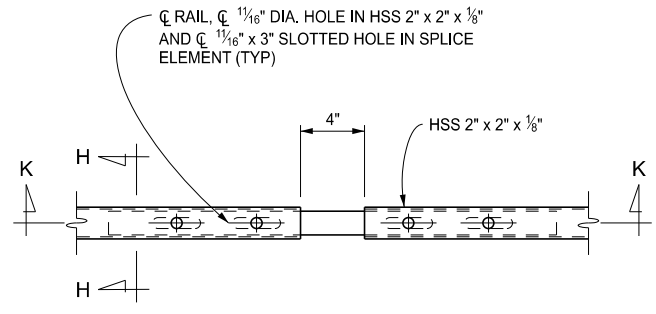
FIXED SPLICE DETAILS



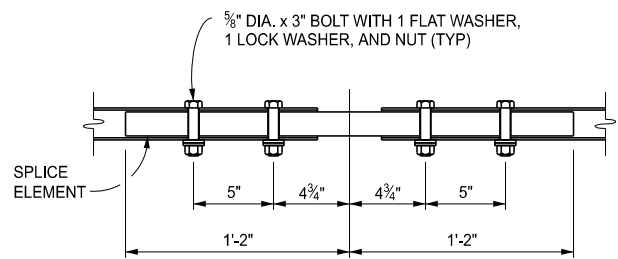
PLAN
HSS 4" x 3" x 1/4"



SECTION J-J
HSS 4" x 3" x 1/4"



PLAN
HSS 2" x 2" x 1/8"



SECTION K-K
HSS 2" x 2" x 1/8"

EXPANSION SPLICE DETAILS



DEPARTMENT DIRECTOR
BRADLEY C. WIEFERICH, PE

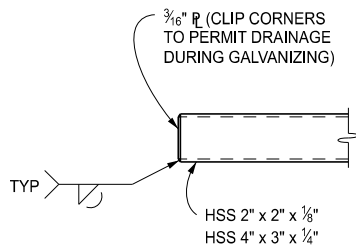
STANDARD PLAN FOR BRIDGE RAILING, AESTHETIC PARAPET TUBE

(SPECIAL DETAIL)
FHWA APPROVAL

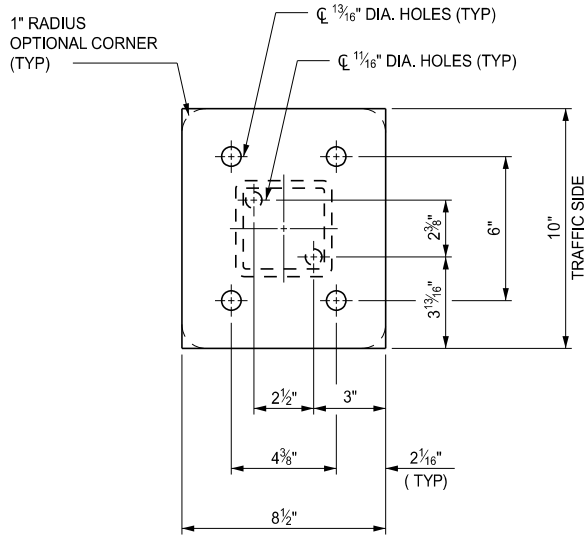
09/09/2024
PLAN DATE

B-25-L

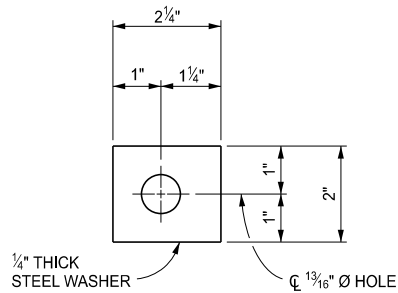
SHEET
5 OF 8



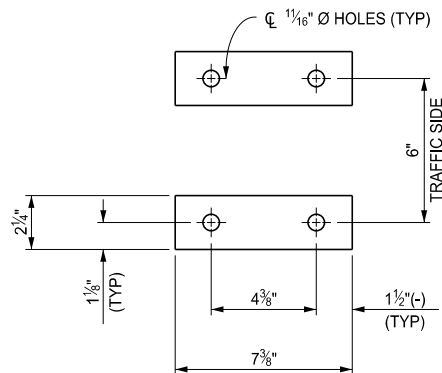
END OF RAIL



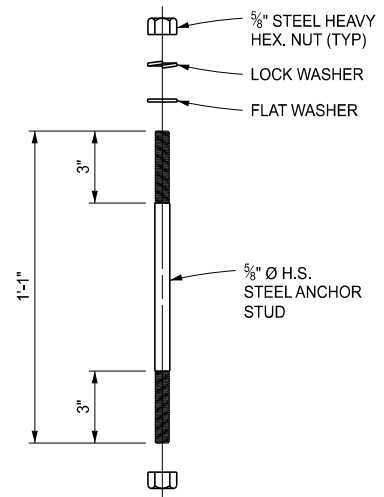
EXTERIOR BASE PLATE



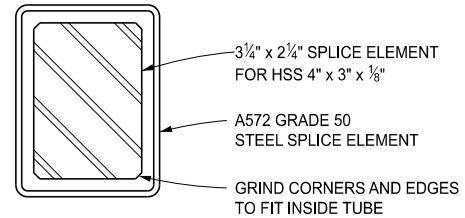
DETAIL A



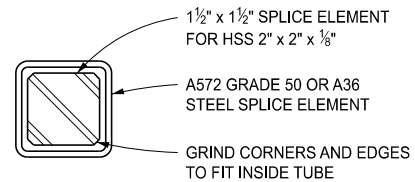
EMBEDDED ANCHOR STUD PLATES



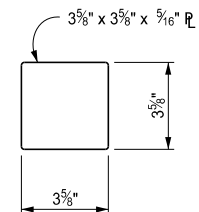
ANCHOR STUD DETAIL



SECTION G-G



SECTION H-H



POST COVER PLATE



DEPARTMENT DIRECTOR
BRADLEY C. WIEFERICH, PE

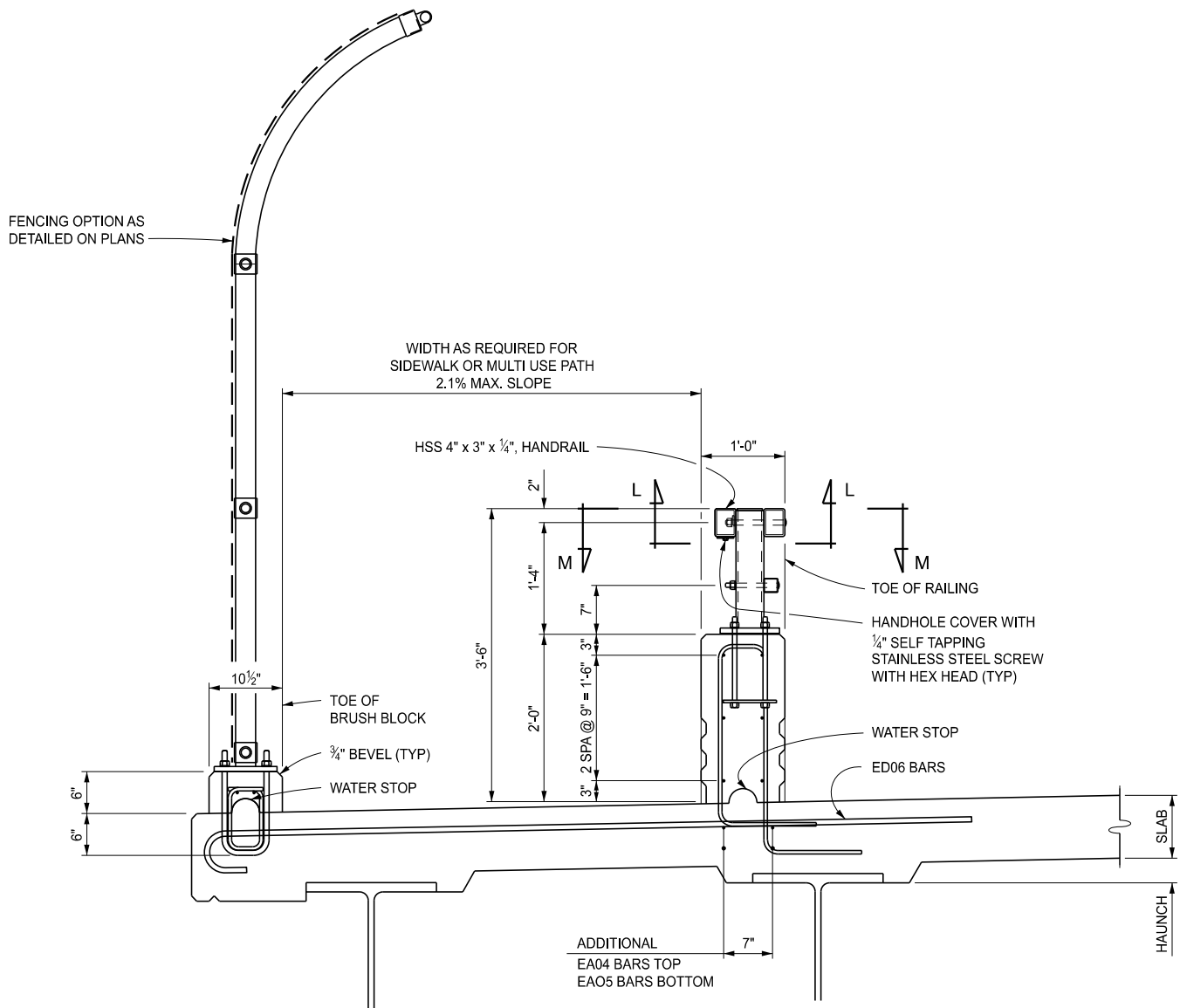
STANDARD PLAN FOR
BRIDGE RAILING, AESTHETIC PARAPET TUBE

(SPECIAL DETAIL)
FHWA APPROVAL

09/09/2024
PLAN DATE

B-25-L

SHEET
6 OF 8



SECTION WITH PEDESTRIAN / MULTI USE PATH



DEPARTMENT DIRECTOR
BRADLEY C. WIEFERICH, PE

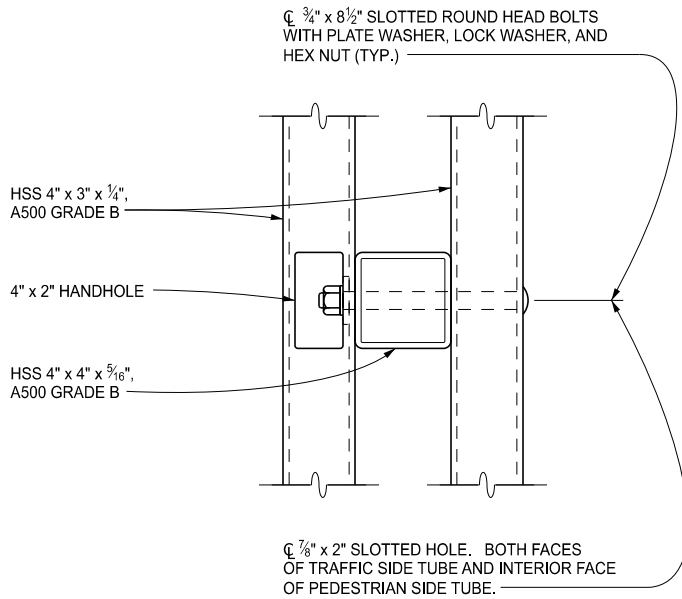
STANDARD PLAN FOR
BRIDGE RAILING, AESTHETIC PARAPET TUBE

(SPECIAL DETAIL)
FHWA APPROVAL

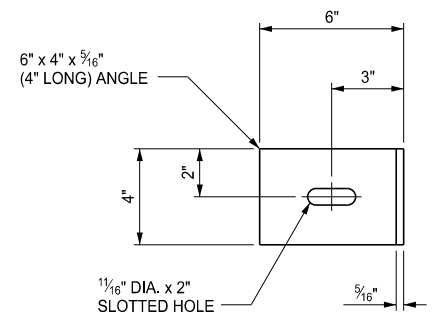
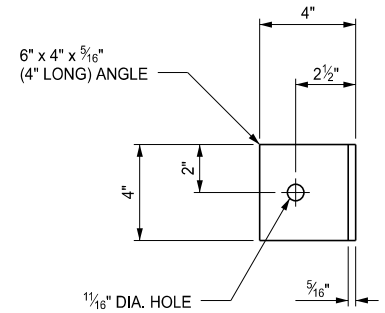
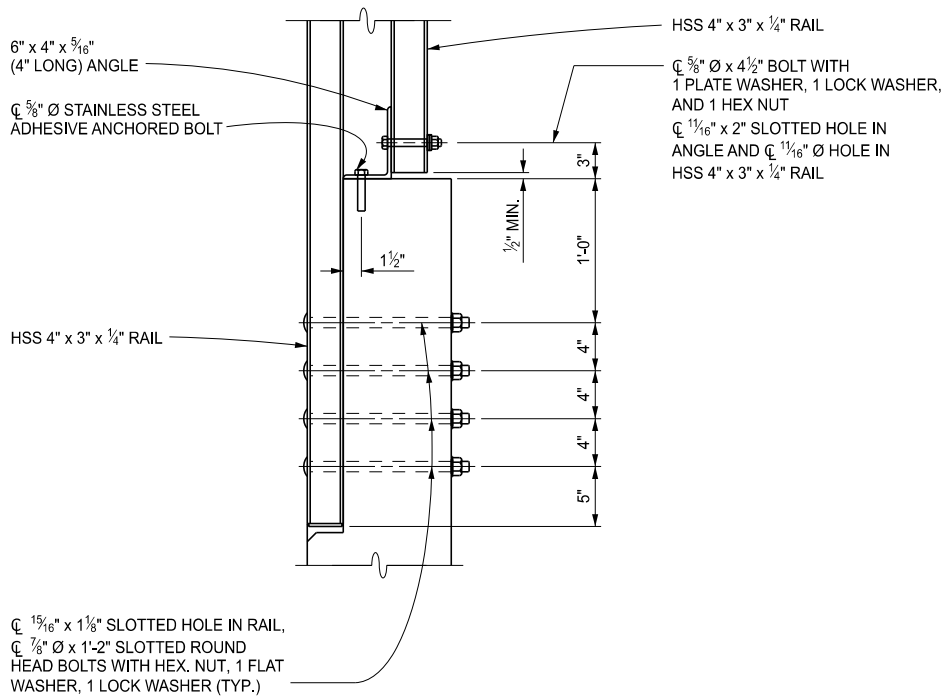
09/09/2024
PLAN DATE

B-25-L

SHEET
7 OF 8



SECTION L-L



DEPARTMENT DIRECTOR
 BRADLEY C. WIEFERICH, PE

STANDARD PLAN FOR
 BRIDGE RAILING, AESTHETIC PARAPET TUBE

(SPECIAL DETAIL)
 FHWA APPROVAL

09/09/2024
 PLAN DATE

B-25-L

SHEET
 8 OF 8