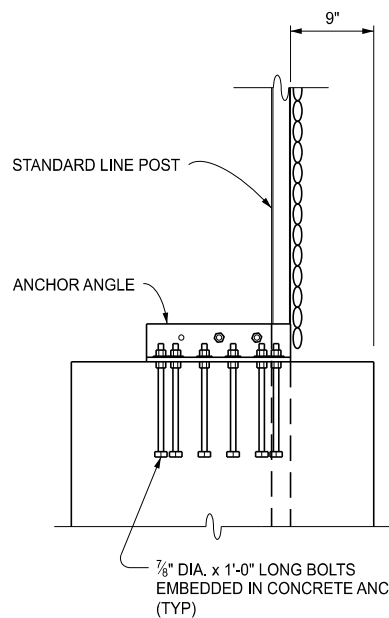
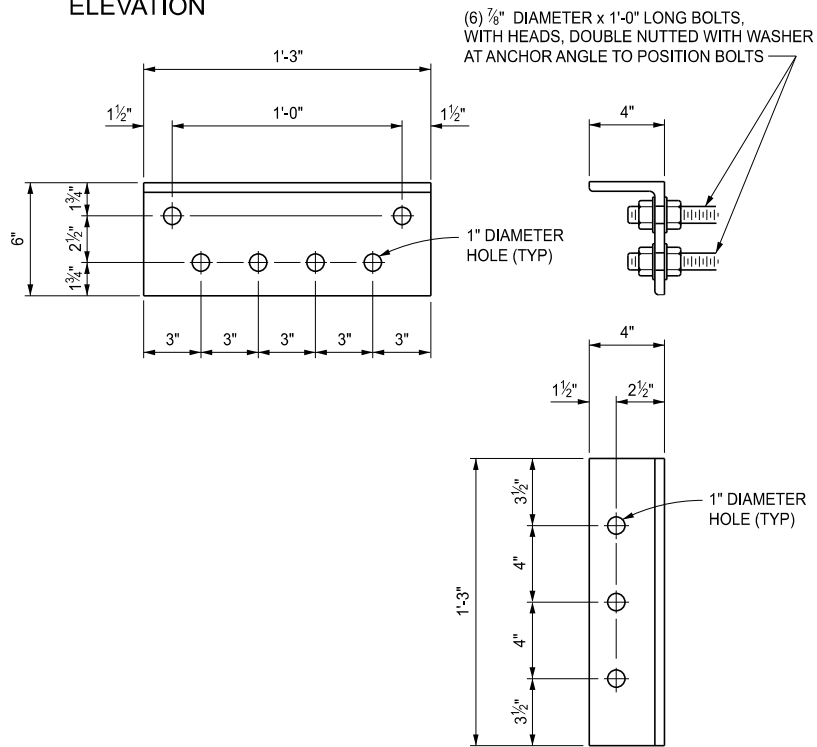


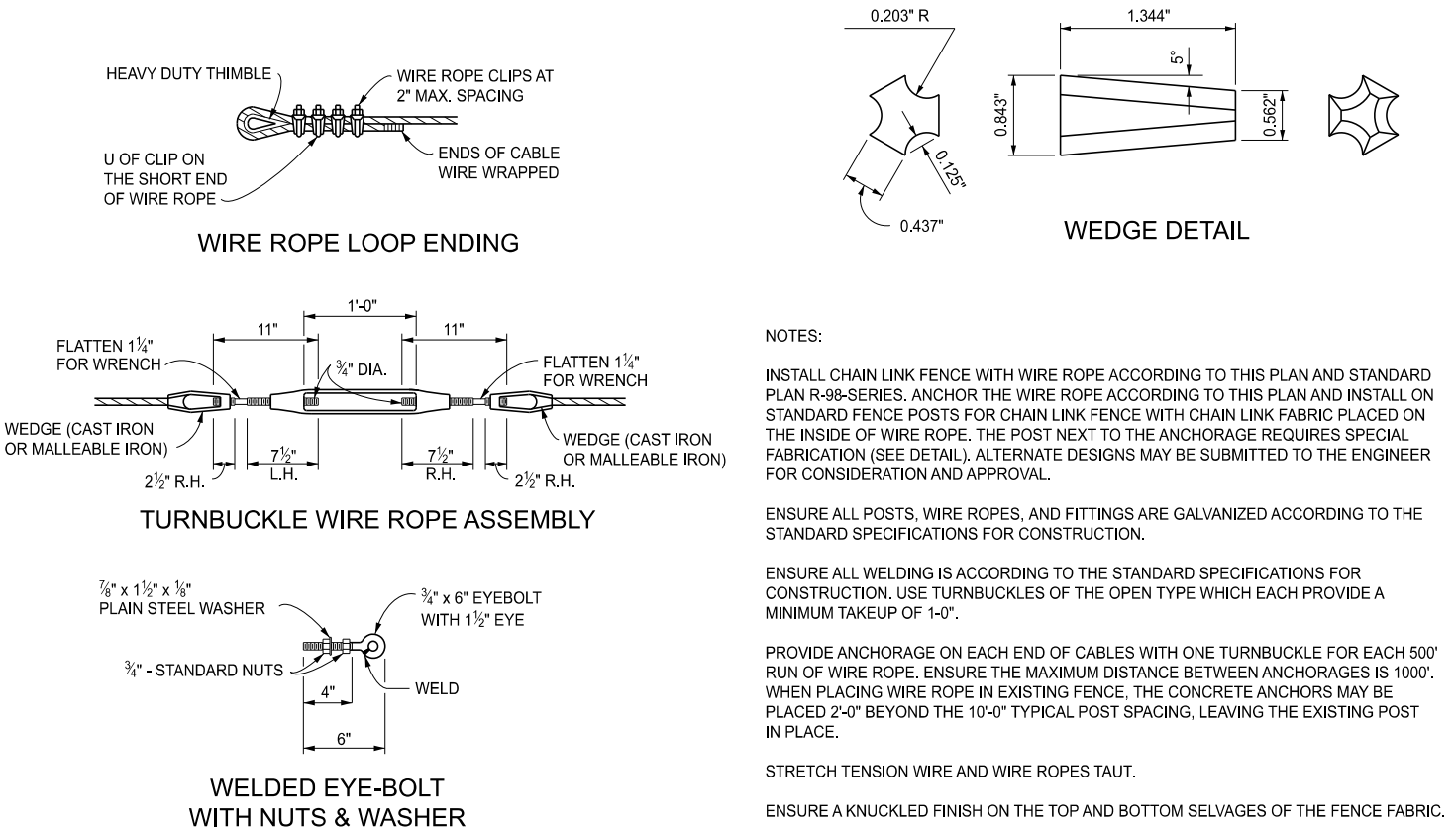
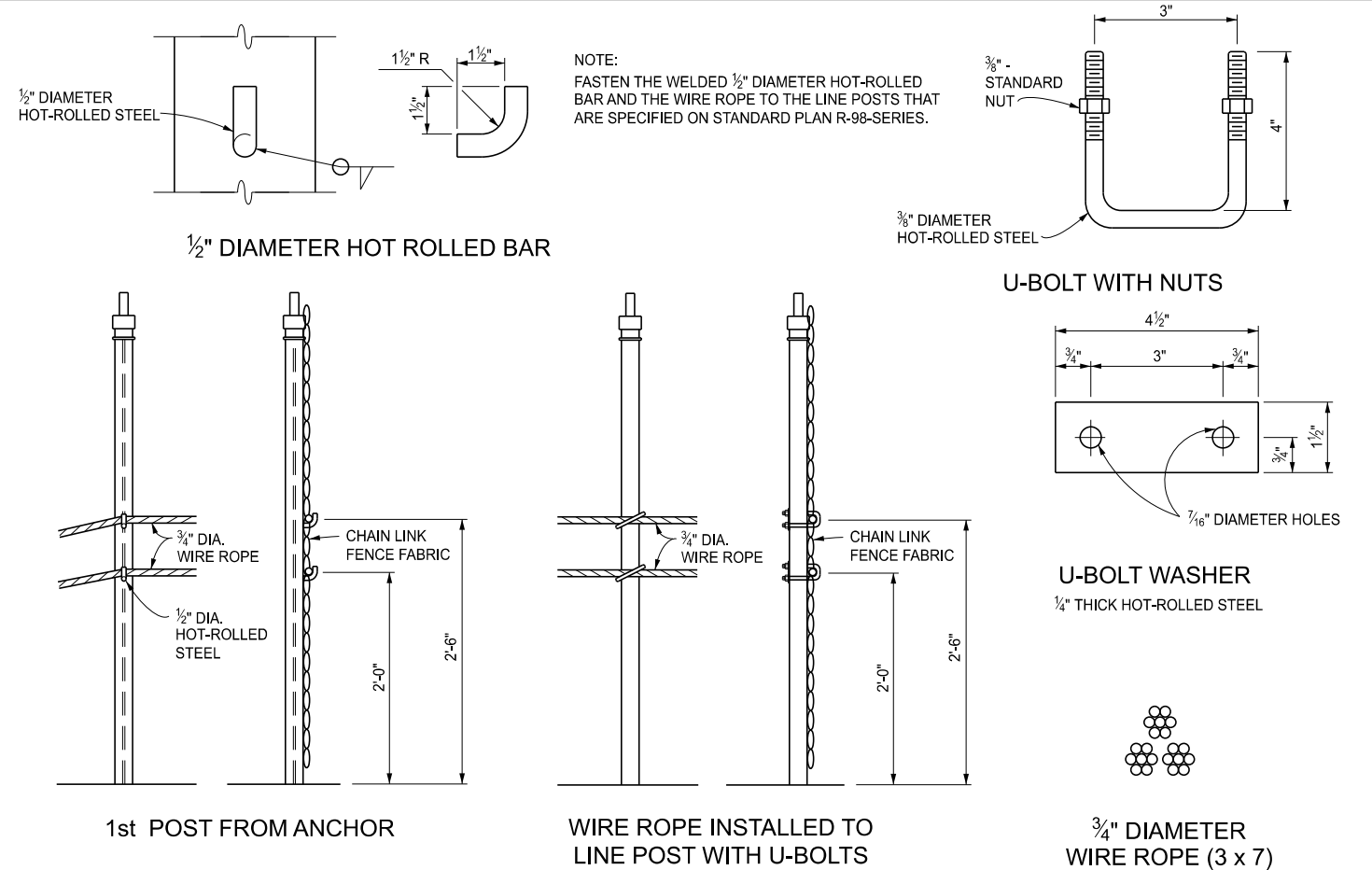
ELEVATION



END VIEW OF CONCRETE ANCHOR
CONCRETE QUANTITY FOR ANCHOR = 0.5 CYD



L6" x 4" x 1/2" x 1'-3" LONG
ANCHOR ANGLE



NOTES:

INSTALL CHAIN LINK FENCE WITH WIRE ROPE ACCORDING TO THIS PLAN AND STANDARD PLAN R-98-SERIES. ANCHOR THE WIRE ROPE ACCORDING TO THIS PLAN AND INSTALL ON STANDARD FENCE POSTS FOR CHAIN LINK FENCE WITH CHAIN LINK FABRIC PLACED ON THE INSIDE OF WIRE ROPE. THE POST NEXT TO THE ANCHORAGE REQUIRES SPECIAL FABRICATION (SEE DETAIL). ALTERNATE DESIGNS MAY BE SUBMITTED TO THE ENGINEER FOR CONSIDERATION AND APPROVAL.

ENSURE ALL POSTS, WIRE ROPES, AND FITTINGS ARE GALVANIZED ACCORDING TO THE STANDARD SPECIFICATIONS FOR CONSTRUCTION.

ENSURE ALL WELDING IS ACCORDING TO THE STANDARD SPECIFICATIONS FOR CONSTRUCTION. USE TURNBUCKLES OF THE OPEN TYPE WHICH EACH PROVIDE A MINIMUM TAKEUP OF 1'-0".

PROVIDE ANCHORAGE ON EACH END OF CABLES WITH ONE TURNBUCKLE FOR EACH 500' RUN OF WIRE ROPE. ENSURE THE MAXIMUM DISTANCE BETWEEN ANCHORAGES IS 1000'. WHEN PLACING WIRE ROPE IN EXISTING FENCE, THE CONCRETE ANCHORS MAY BE PLACED 2'-0" BEYOND THE 10'-0" TYPICAL POST SPACING, LEAVING THE EXISTING POST IN PLACE.

STRETCH TENSION WIRE AND WIRE ROPES TAUT.

ENSURE A KNUCKLED FINISH ON THE TOP AND BOTTOM SELVAGES OF THE FENCE FABRIC.

APPROVED BY: _____
DIRECTOR, BUREAU OF FIELD SERVICES

APPROVED BY: _____
DIRECTOR, BUREAU OF DEVELOPMENT



DEPARTMENT DIRECTOR
BRADLEY C. WIEFERICH, PE

SPECIAL DETAIL FOR
CHAIN LINK FENCE WITH WIRE ROPE

(SPECIAL DETAIL)
FHWA APPROVAL

03/17/2026
PLAN DATE

SPECIAL DETAIL 99

SHEET
1 OF 2



DEPARTMENT DIRECTOR
BRADLEY C. WIEFERICH, PE

SPECIAL DETAIL FOR
CHAIN LINK FENCE WITH WIRE ROPE

(SPECIAL DETAIL)
FHWA APPROVAL

03/17/2026
PLAN DATE

SPECIAL DETAIL 99

SHEET
2 OF 2
SECT