

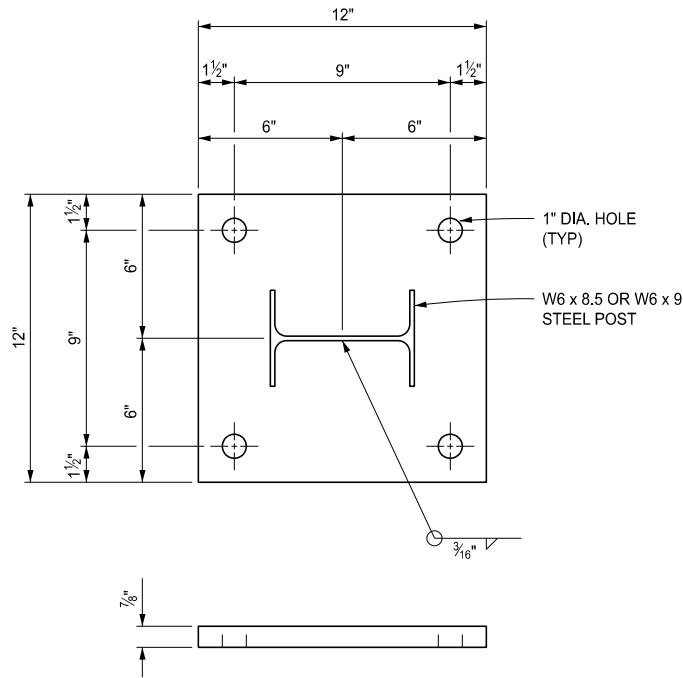
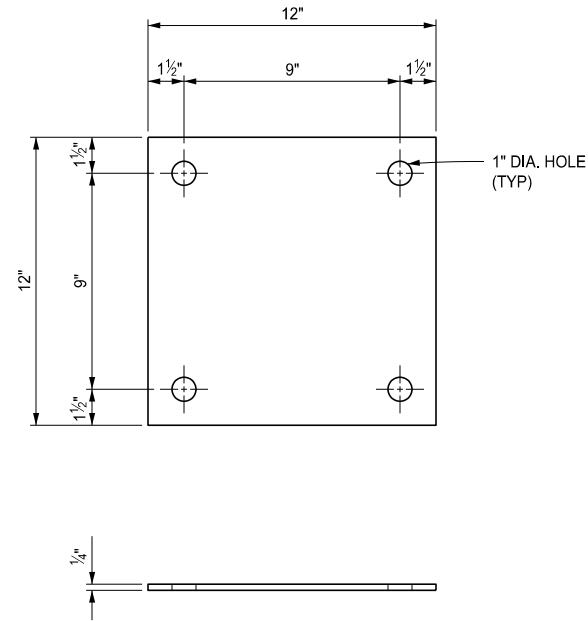


APPROVED BY: _____ DIRECTOR, BUREAU OF FIELD SERVICES		 Michigan Department of Transportation	STANDARD PLAN FOR GUARDRAIL OVER BOX OR SLAB CULVERTS			
APPROVED BY: _____ DIRECTOR, BUREAU OF DEVELOPMENT			DEPARTMENT DIRECTOR BRADLEY C. WIEFERICH, PE	(SPECIAL DETAIL) FHWA APPROVAL	02/23/2026 PLAN DATE	R-73-F

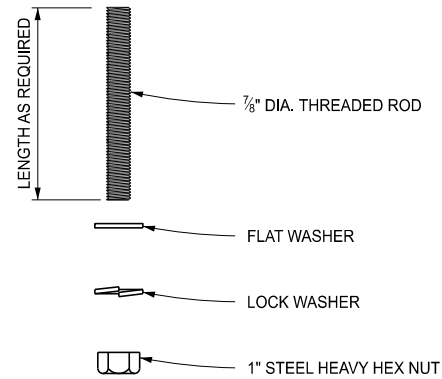
<div> Michigan Department of Transportation</div> <div>DEPARTMENT DIRECTOR BRADLEY C. WIEFERICH, PE</div>	STANDARD PLAN FOR GUARDRAIL OVER BOX OR SLAB CULVERTS			
	(SPECIAL DETAIL) FHWA APPROVAL	02/23/2026 PLAN DATE	R-73-F	SHEET 2 OF 3
				SECT



BASE PLATE DETAIL



WASHER PLATE DETAIL



THREADED ROD DETAIL

NOTES:

CONSTRUCT AND PAY FOR GUARDRAIL ACCORDING TO THE STANDARD SPECIFICATIONS FOR CONSTRUCTION AND STANDARD PLAN R-60-SERIES. IN ADDITION, PAY FOR POSTS ANCHORED TO THE CULVERT SLAB AS "GUARDRAIL POST, CULV", WHICH INCLUDES ALL LABOR AND MATERIALS REQUIRED TO CONSTRUCT THE POST AS DETAILED ON THIS PLAN.

ENSURE ALL MATERIALS FOR GUARDRAIL POST, CULVERT CONFORM TO THE STANDARD SPECIFICATIONS FOR CONSTRUCTION FOR BRIDGE RAILINGS.

ENSURE ALL WORK AND MATERIALS CONFORM TO THE STANDARD SPECIFICATIONS FOR CONSTRUCTION.



DEPARTMENT DIRECTOR
BRADLEY C. WIEFERICH, PE

STANDARD PLAN FOR
GUARDRAIL OVER BOX OR SLAB CULVERTS

(SPECIAL DETAIL)
FHWA APPROVAL

02/23/2026
PLAN DATE

R-73-F

SHEET
3 OF 3

SECT