
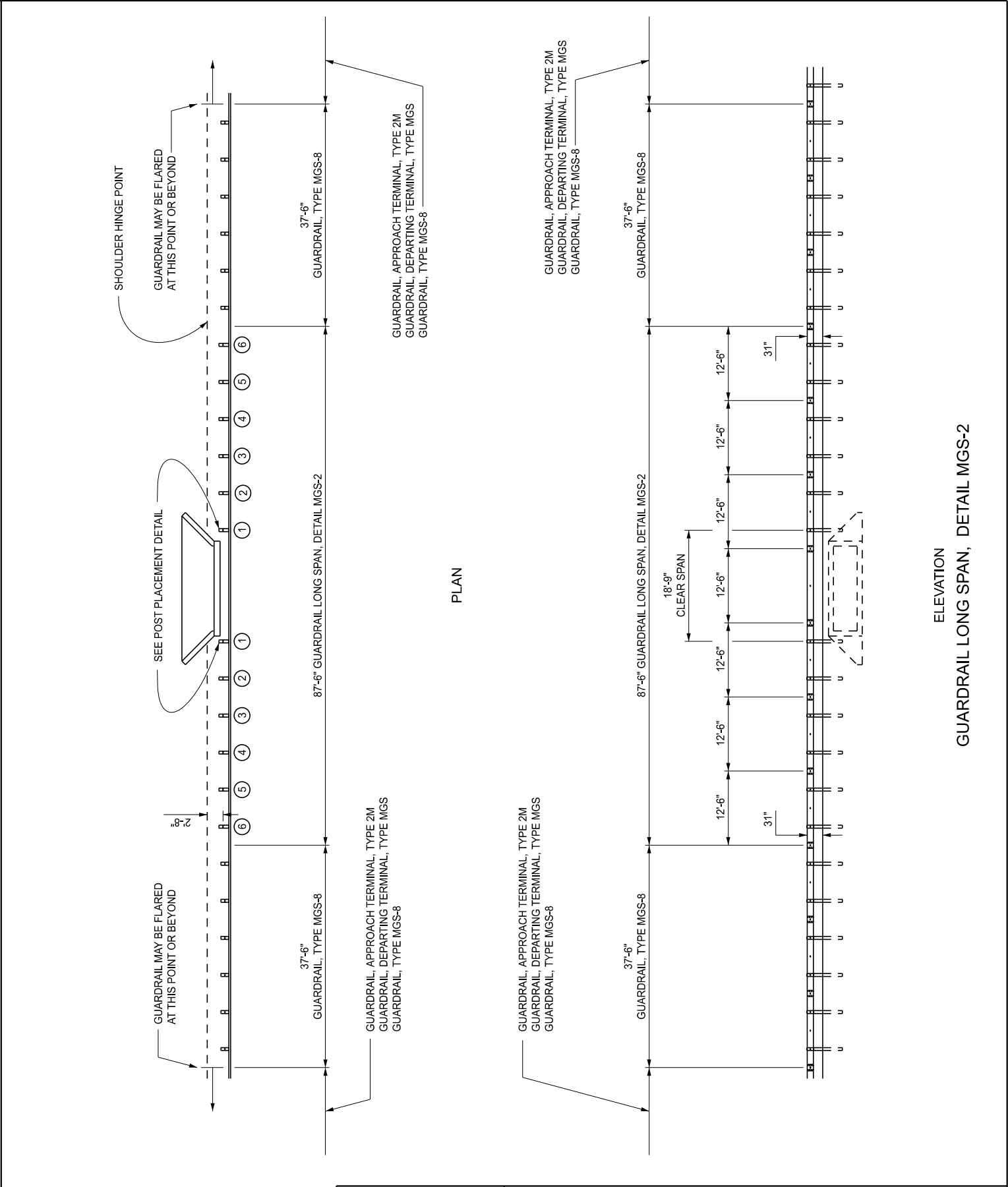

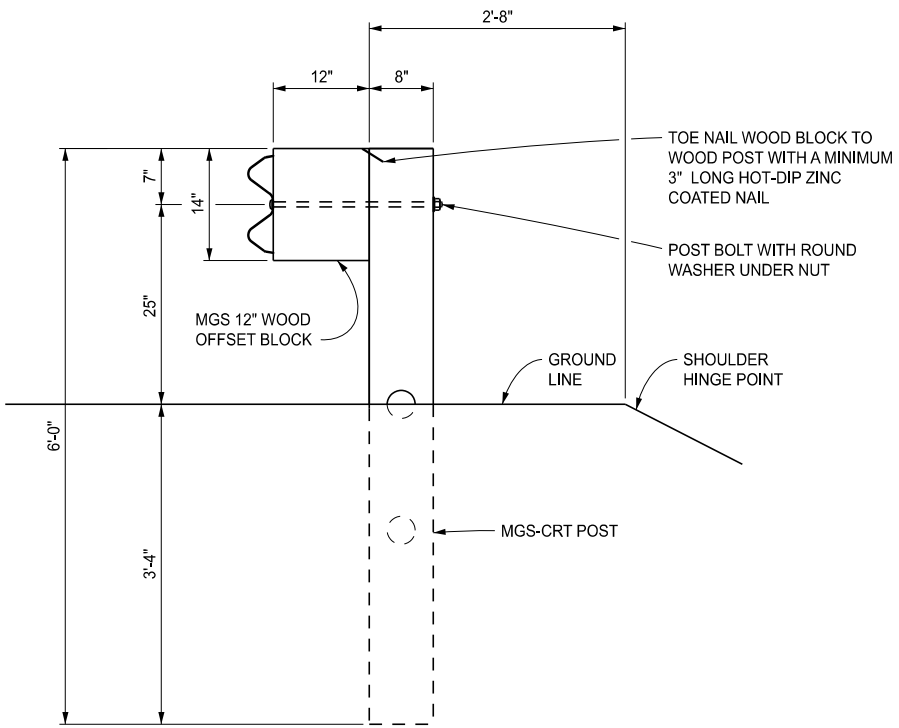


APPROVED BY: _____ DIRECTOR, BUREAU OF FIELD SERVICES		 Michigan Department of Transportation	STANDARD PLAN FOR GUARDRAIL LONG SPAN INSTALLATIONS			
APPROVED BY: _____ DIRECTOR, BUREAU OF DEVELOPMENT			DEPARTMENT DIRECTOR BRADLEY C. WIEFERICH, PE	(SPECIAL DETAIL) FHWA APPROVAL	04/25/2025 PLAN DATE	R-72-D

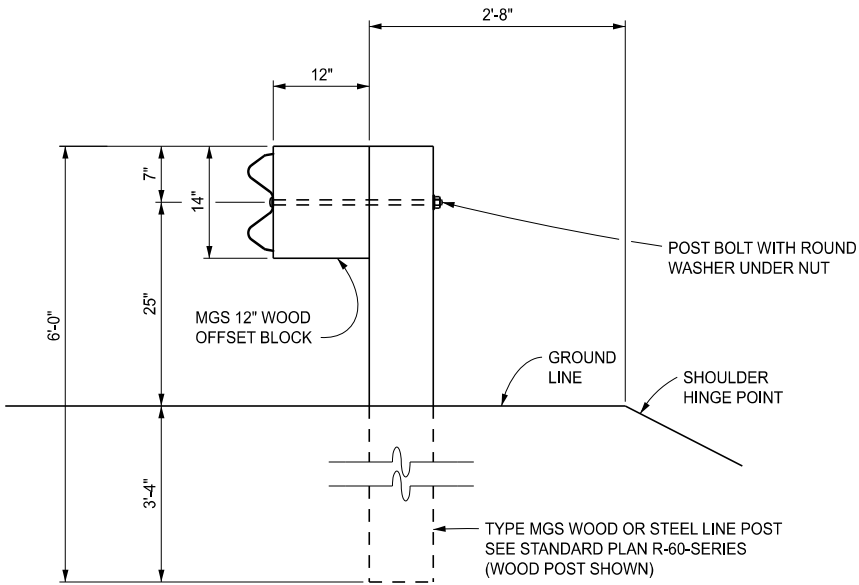


	 Michigan Department of Transportation	STANDARD PLAN FOR GUARDRAIL LONG SPAN INSTALLATIONS			
		(SPECIAL DETAIL) FHWA APPROVAL	04/25/2025 PLAN DATE	R-72-D	SHEET 2 OF 6
					SECT






POST 1 THROUGH 3 DETAIL  
GUARDRAIL LONG SPAN DETAILS MGS-1, MGS-2, & MGS-3



POST 4 THROUGH 6 DETAIL  
GUARDRAIL LONG SPAN DETAILS MGS-1 & MGS-2

POST 4 THROUGH 8 DETAIL  
GUARDRAIL LONG SPAN DETAIL MGS-3


 Michigan Department of Transportation	STANDARD PLAN FOR GUARDRAIL LONG SPAN INSTALLATIONS			
	(SPECIAL DETAIL) FHWA APPROVAL	04/25/2025 PLAN DATE	R-72-D	SHEET 5 OF 6

NOTES:

ENSURE ALL POSTS, OFFSET BLOCKS, BEAM ELEMENTS, AND HARDWARE (INCLUDING BOLTS, NUTS, AND WASHERS) CONFORM TO THE STANDARD SPECIFICATIONS FOR CONSTRUCTION AND STANDARD PLAN R-60-SERIES, WHERE APPLICABLE, EXCEPT WHERE NOTED ON THIS STANDARD.

ONLY USE THE GUARDRAIL MODIFICATIONS DETAILED ON THIS STANDARD WHERE 6'-3" POST SPACING AND POST EMBEDMENT CANNOT BE MET.

IF THE USE OF THIS DESIGN WOULD INTERFERE WITH THE POST SPACING WITHIN A GUARDRAIL BRIDGE ANCHORAGE AS SPECIFIED ON STANDARD PLAN R-67-SERIES, INVESTIGATE AND USE OTHER OPTIONS.

 Michigan Department of Transportation	STANDARD PLAN FOR GUARDRAIL LONG SPAN INSTALLATIONS			
	(SPECIAL DETAIL) FHWA APPROVAL	04/25/2025 PLAN DATE	R-72-D	SHEET 6 OF 6 SECT