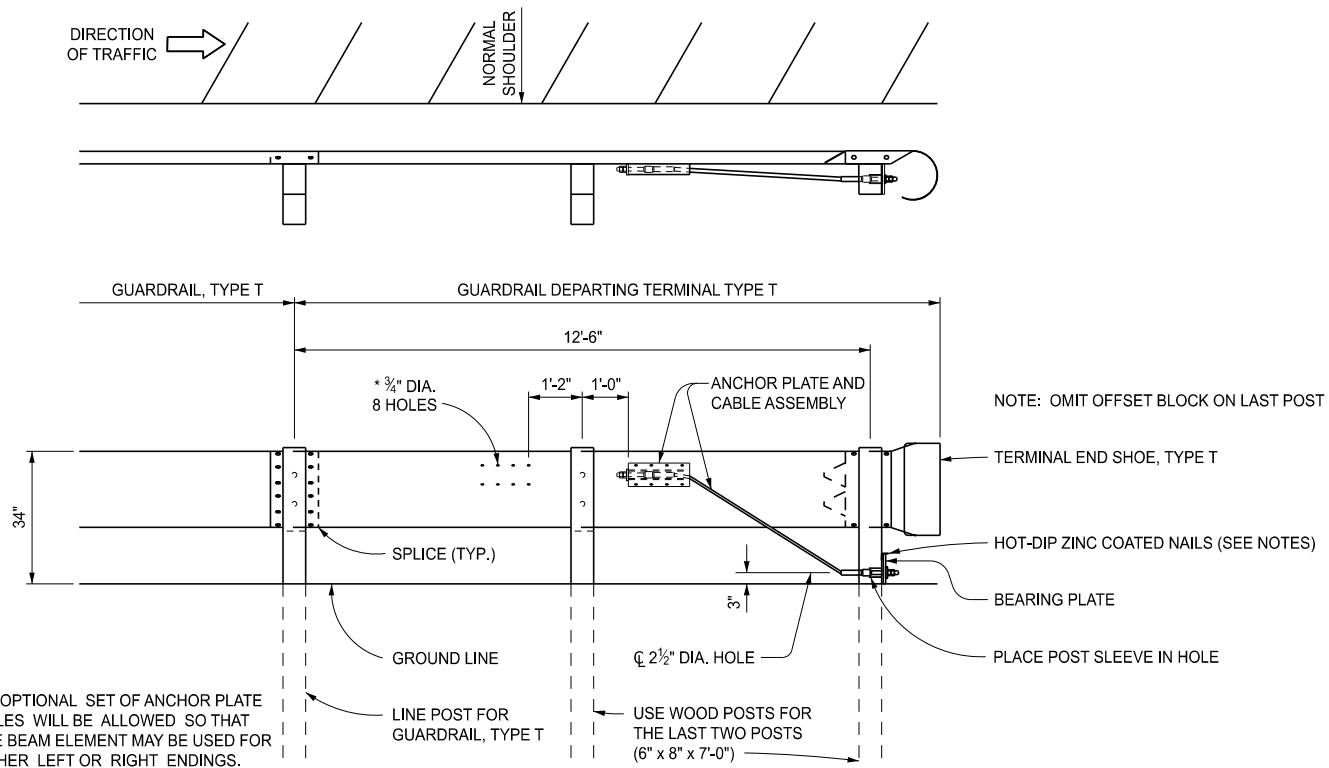
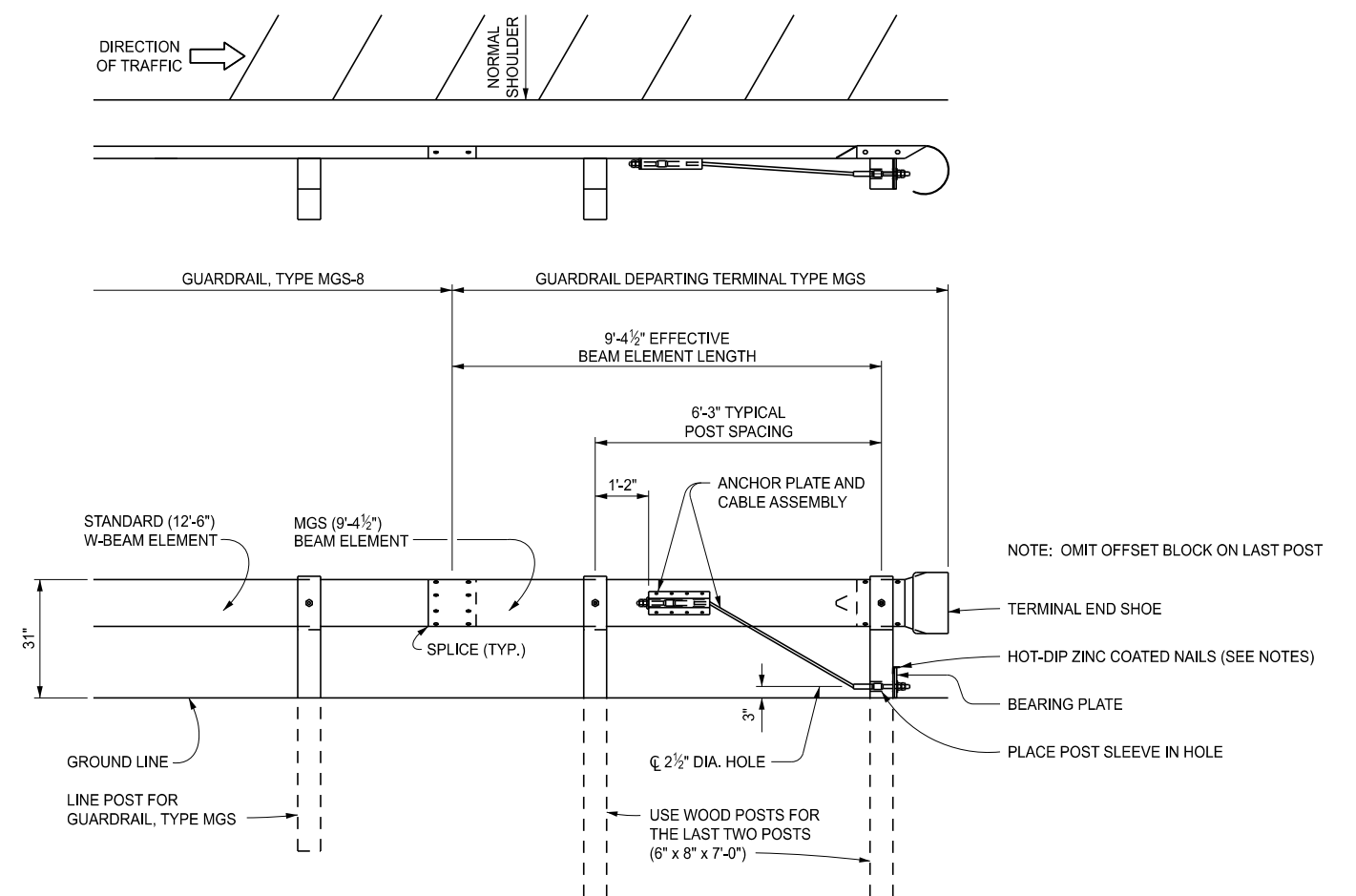


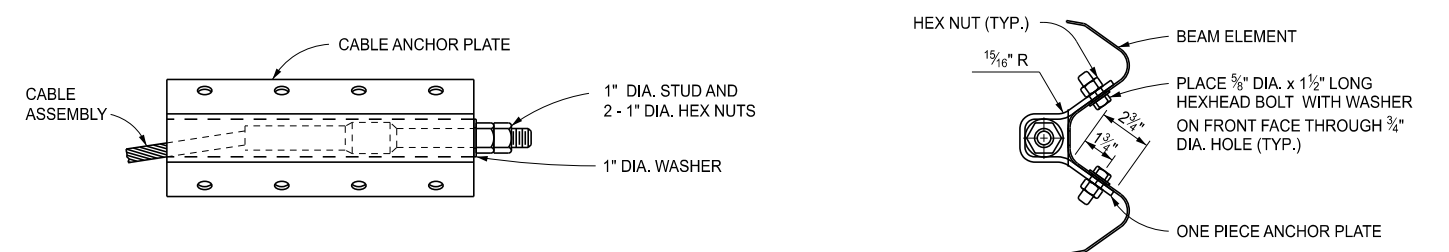
GUARDRAIL DEPARTING TERMINAL TYPE B



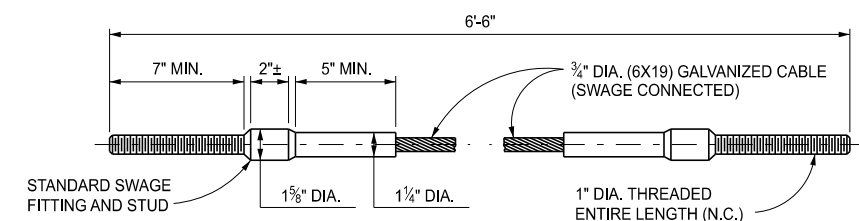
GUARDRAIL DEPARTING TERMINAL TYPE T



GUARDRAIL DEPARTING TERMINAL TYPE MGS



CABLE ANCHOR PLATE DETAILS



CABLE ASSEMBLY

APPROVED BY: _____
DIRECTOR, BUREAU OF FIELD SERVICES



DEPARTMENT DIRECTOR
BRADLEY C. WIEFERICH, PE

STANDARD PLAN FOR
GUARDRAIL DEPARTING TERMINAL TYPES B, T, & MGS

(SPECIAL DETAIL)
FHWA APPROVAL

02/23/2026
PLAN DATE

R-66-E

SHEET
1 OF 4



DEPARTMENT DIRECTOR
BRADLEY C. WIEFERICH, PE

STANDARD PLAN FOR
GUARDRAIL DEPARTING TERMINAL TYPES B, T, & MGS

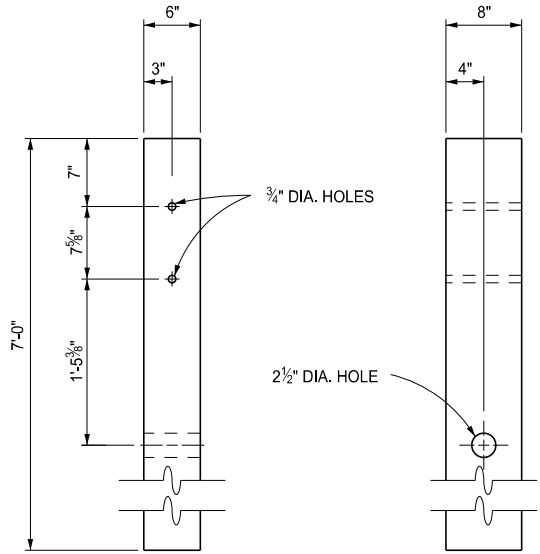
(SPECIAL DETAIL)
FHWA APPROVAL

02/23/2026
PLAN DATE

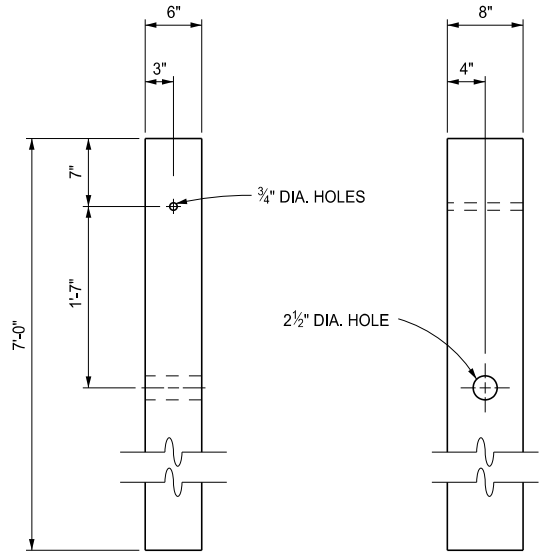
R-66-E

SHEET
2 OF 4

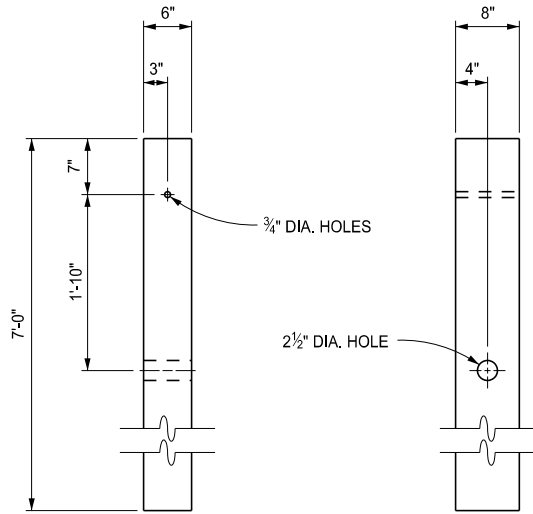
SECT



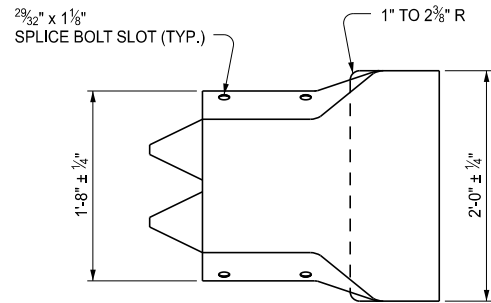
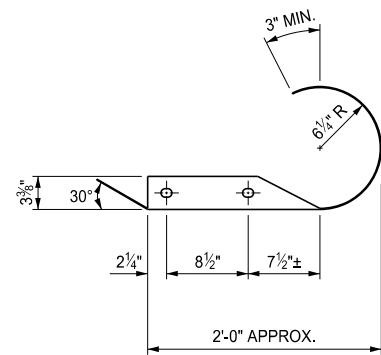
WOOD POST DETAIL
(FOR LAST POST, GUARDRAIL DEPARTING TERMINAL TYPE T)



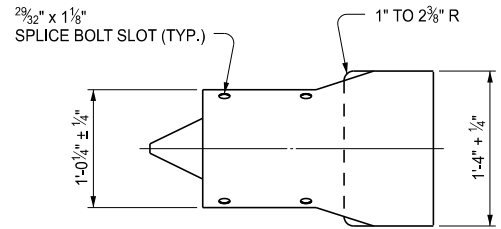
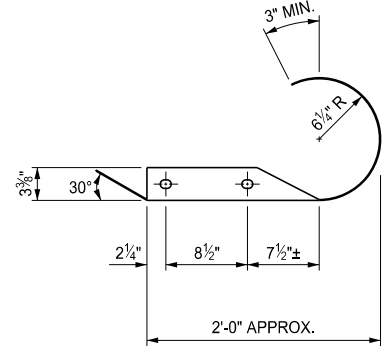
WOOD POST DETAIL
(FOR LAST POST, GUARDRAIL DEPARTING TERMINAL TYPE B)



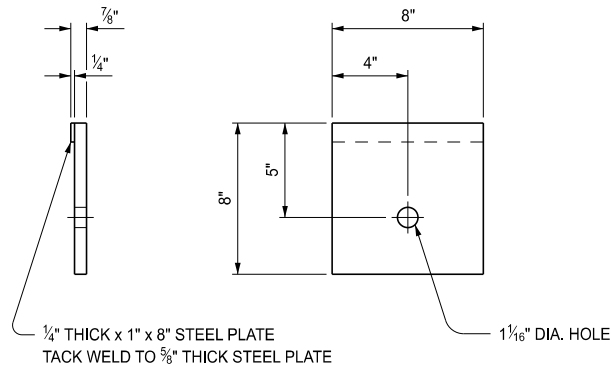
WOOD POST DETAIL
(FOR LAST POST, GUARDRAIL DEPARTING TERMINAL TYPE MGS)



TERMINAL END SHOE, TYPE T



TERMINAL END SHOE,
TYPE A, TYPE B OR TYPE MGS



BEARING PLATE



POST SLEEVE

NOTES:

ENSURE ALL POSTS, OFFSET BLOCKS, BEAM ELEMENTS, AND HARDWARE (INCLUDING BOLTS, NUTS, AND WASHERS) CONFORM TO THE STANDARD SPECIFICATIONS FOR CONSTRUCTION AND TO STANDARD PLAN R-60-SERIES, WHERE APPLICABLE, EXCEPT AS SPECIFIED ON THIS STANDARD.


FOR DETAILS OF GUARDRAIL PLACEMENT, SEE STANDARD PLAN R-59-SERIES.

GRADE ALL 1:10 SLOPES TO CLASS A SLOPE TOLERANCES.

AFTER THE CABLE ASSEMBLY HAS BEEN TIGHTENED, INSTALL A SECOND NUT ON EACH END OF THE CABLE SO THAT THE CABLE WILL NOT LOOSEN.

DRIVE TWO HOT-DIP ZINC COATED NAILS INTO THE WOOD POST AT THE TOP OF THE BEARING PLATE TO KEEP THE BEARING PLATE FROM ROTATING.

 Michigan Department of Transportation	STANDARD PLAN FOR GUARDRAIL DEPARTING TERMINAL TYPES B, T, & MGS			
	(SPECIAL DETAIL) FHWA APPROVAL	02/23/2026 PLAN DATE	R-66-E	SHEET 3 OF 4

 Michigan Department of Transportation	STANDARD PLAN FOR GUARDRAIL DEPARTING TERMINAL TYPES B, T, & MGS			
	(SPECIAL DETAIL) FHWA APPROVAL	02/23/2026 PLAN DATE	R-66-E	SHEET 4 OF 4 SECT