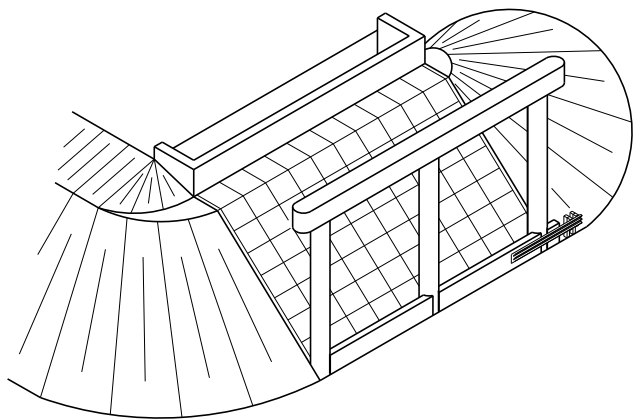
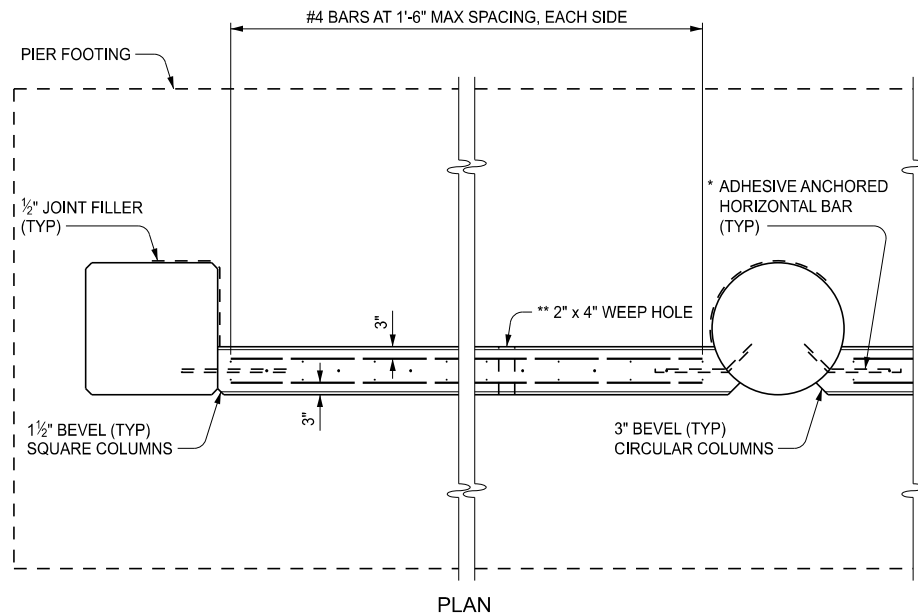


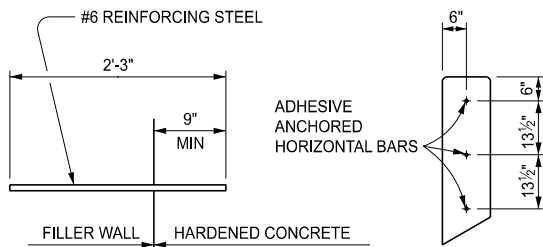
SKETCH OF FILLER WALLS
AT SQUARE PIER COLUMNS



SKETCH OF FILLER WALLS
AT CIRCULAR PIER COLUMNS



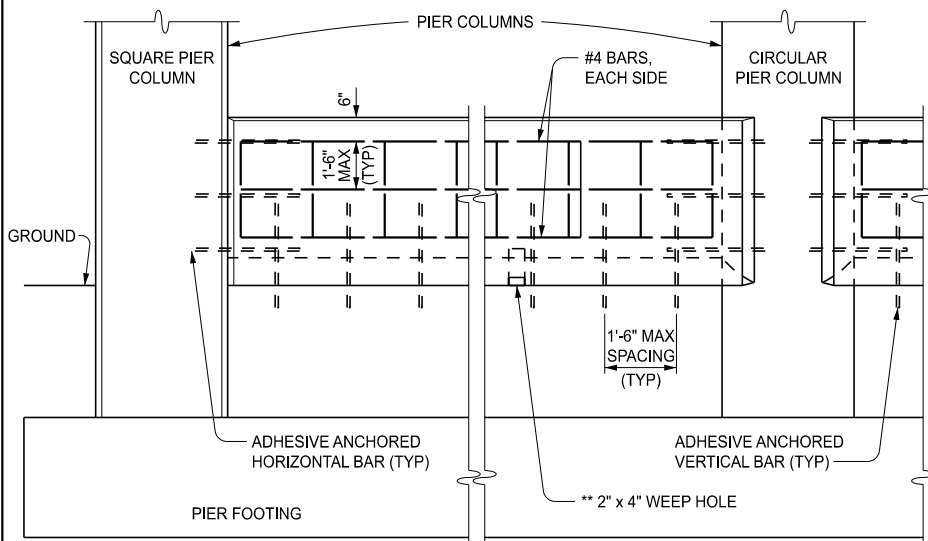
PLAN



ADHESIVE ANCHORED
HORIZONTAL OR VERTICAL BAR
INSTALLATION DETAIL
(UNLESS OTHERWISE DETAILED)

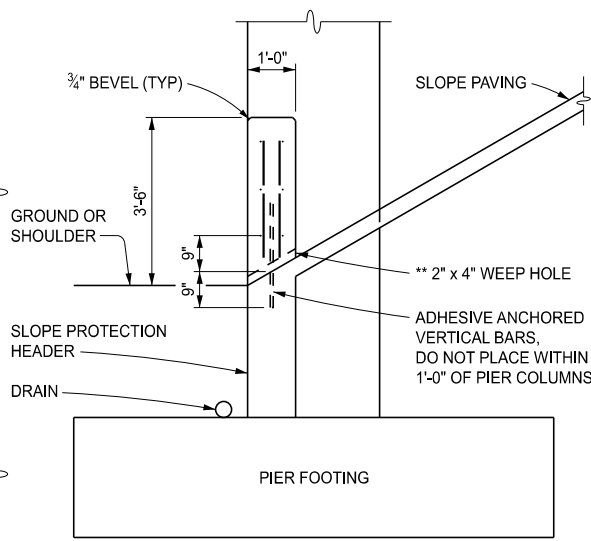
* TEST REINFORCING STEEL ACCORDING TO THE STANDARD SPECIFICATIONS FOR CONSTRUCTION PRIOR TO BENDING. FIELD BEND THE REINFORCING STEEL RADIALLY TO CIRCULAR PIERS AND PARALLEL TO THE FILLER WALL. SEE THE STANDARD SPECIFICATIONS FOR CONSTRUCTION FOR FIELD BENDING REQUIREMENTS. REPAIR ANY DAMAGE TO THE EPOXY COATING DURING TESTING OR BENDING (AT CONTRACTORS EXPENSE).

** PLACE ONE 2" x 4" WEEP HOLE IN EACH FILLER WALL SECTION. (MAY BE RANDOMLY LOCATED)

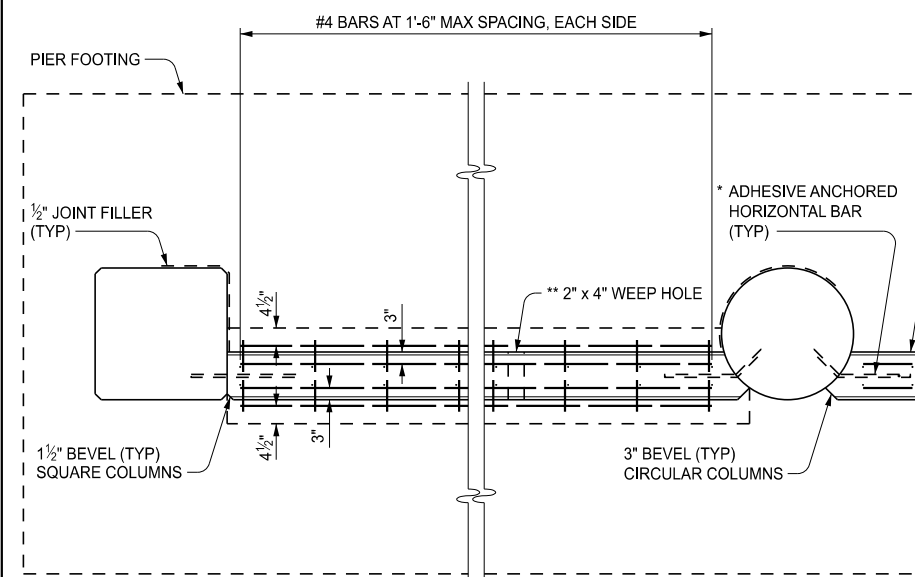


ELEVATION

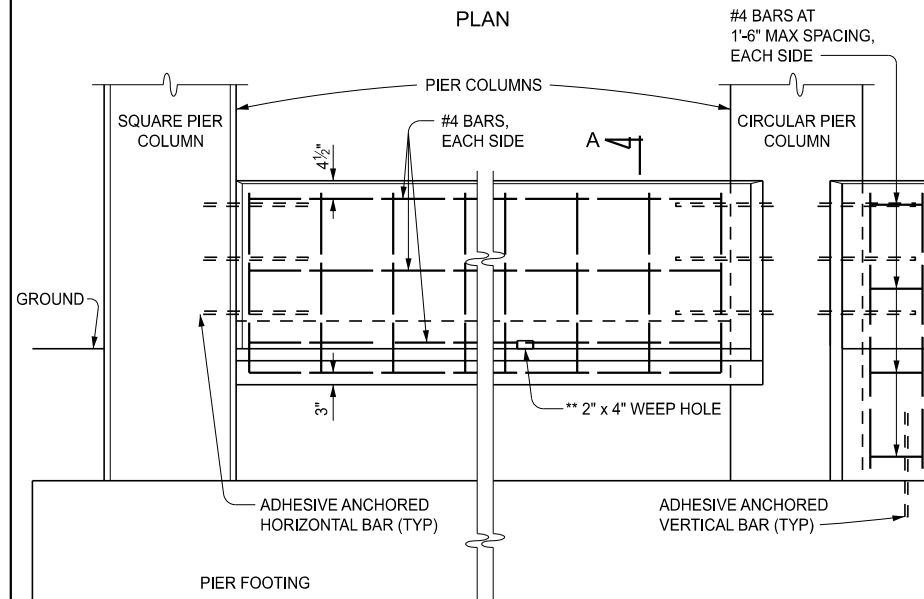
FILLER WALLS USING SLOPE PROTECTION HEADER AS FOOTING



END

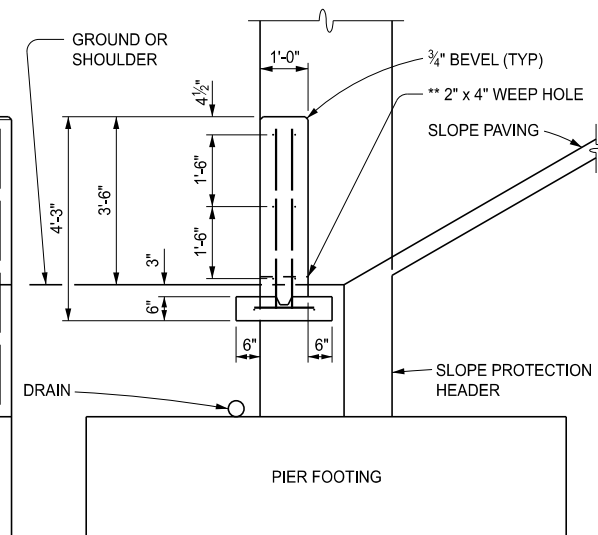


PLAN

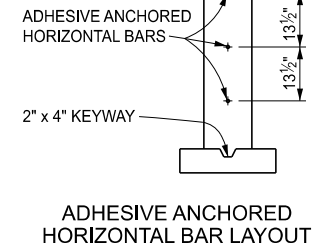


ELEVATION

FILLER WALLS WITH FOOTINGS - OUTSIDE PIERS



SECTION A-A



FILLER WALL END BLOCK
(SEE NOTES, SHEET 5 OF 5
AND DETAILS FOR FILLER
WALL END BLOCK SHEET
3 OF 5)

* TEST REINFORCING STEEL ACCORDING TO THE STANDARD SPECIFICATIONS FOR CONSTRUCTION PRIOR TO BENDING. FIELD BEND THE REINFORCING STEEL RADIALLY TO CIRCULAR PIERS AND PARALLEL TO THE FILLER WALL. SEE THE STANDARD SPECIFICATIONS FOR CONSTRUCTION FOR FIELD BENDING REQUIREMENTS. REPAIR ANY DAMAGE TO THE EPOXY COATING DURING TESTING OR BENDING (AT CONTRACTORS EXPENSE).

** PLACE ONE 2" x 4" WEEP HOLE IN EACH FILLER WALL SECTION (MAY BE RANDOMLY LOCATED)

APPROVED BY: _____
DIRECTOR, BUREAU OF FIELD SERVICES



DEPARTMENT DIRECTOR
BRADLEY C. WIEFERICH, PE

APPROVED BY: _____
DIRECTOR, BUREAU OF DEVELOPMENT

(SPECIAL DETAIL)
FHWA APPROVAL

02/23/2026
PLAN DATE

R-55-H

SHEET
1 OF 5



DEPARTMENT DIRECTOR
BRADLEY C. WIEFERICH, PE

(SPECIAL DETAIL)
FHWA APPROVAL

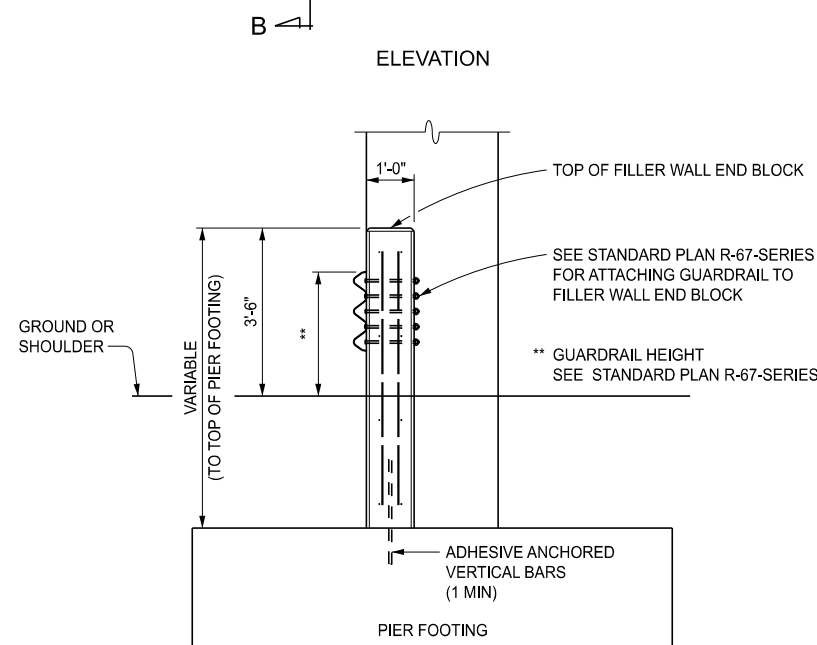
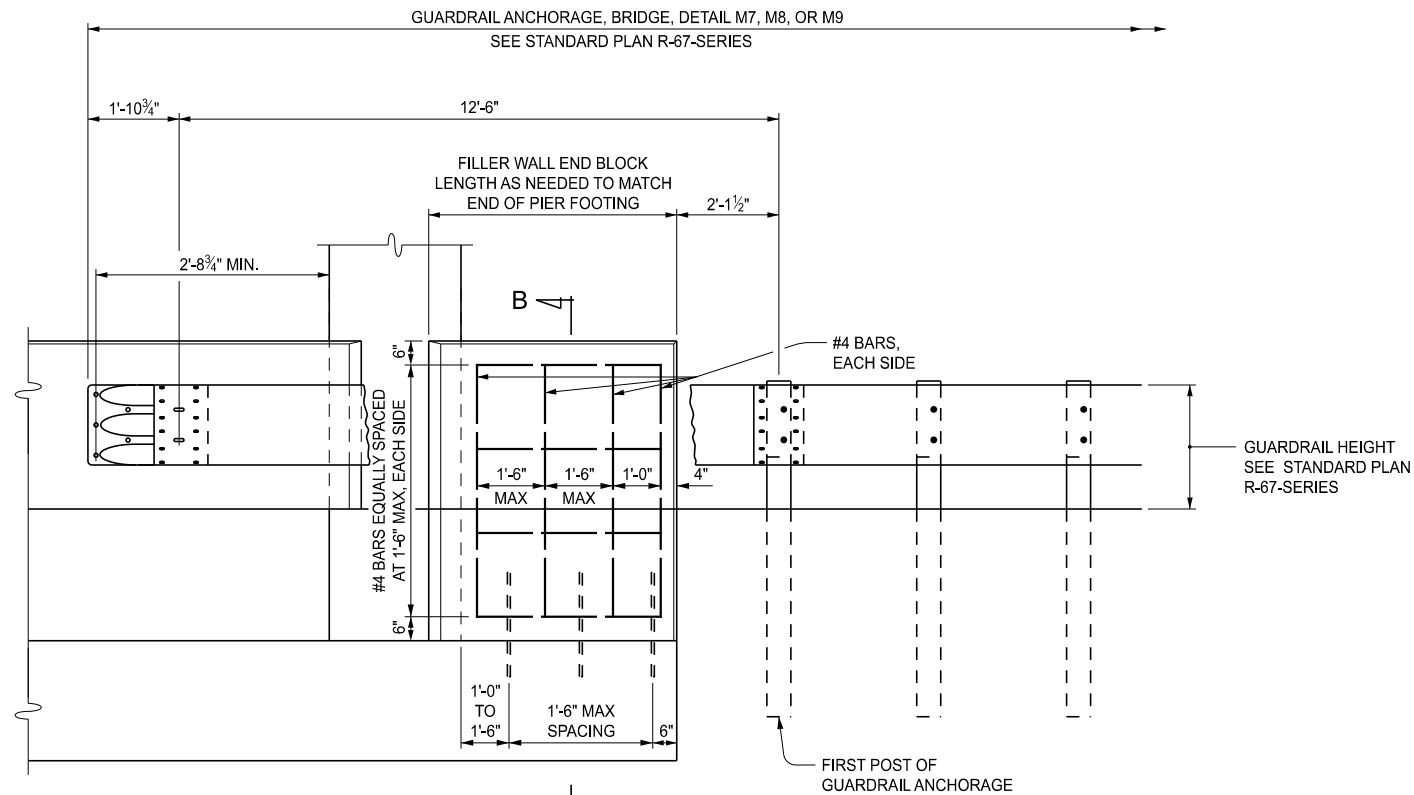
02/23/2026
PLAN DATE

STANDARD PLAN FOR
FILLER WALLS AT
BRIDGE PIER COLUMNS

R-55-H


SHEET
2 OF 5

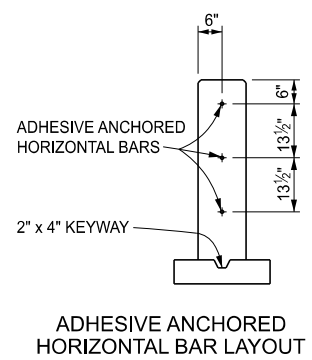
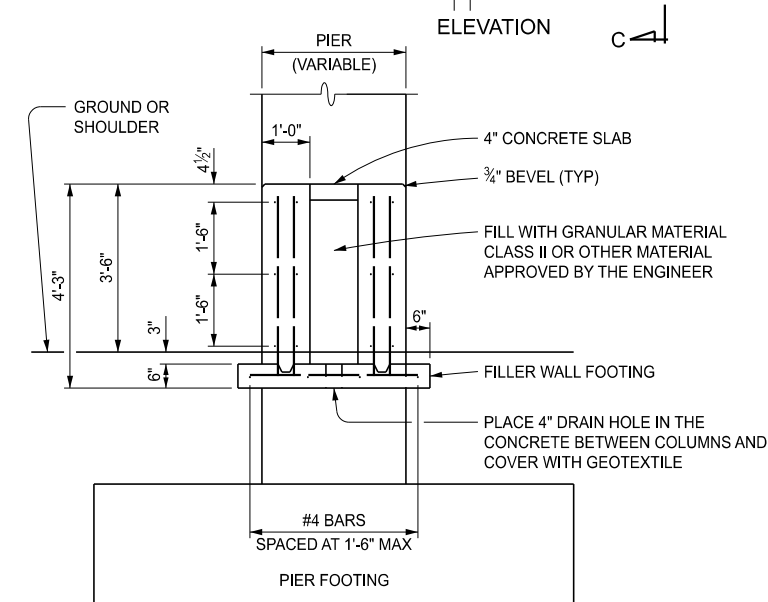
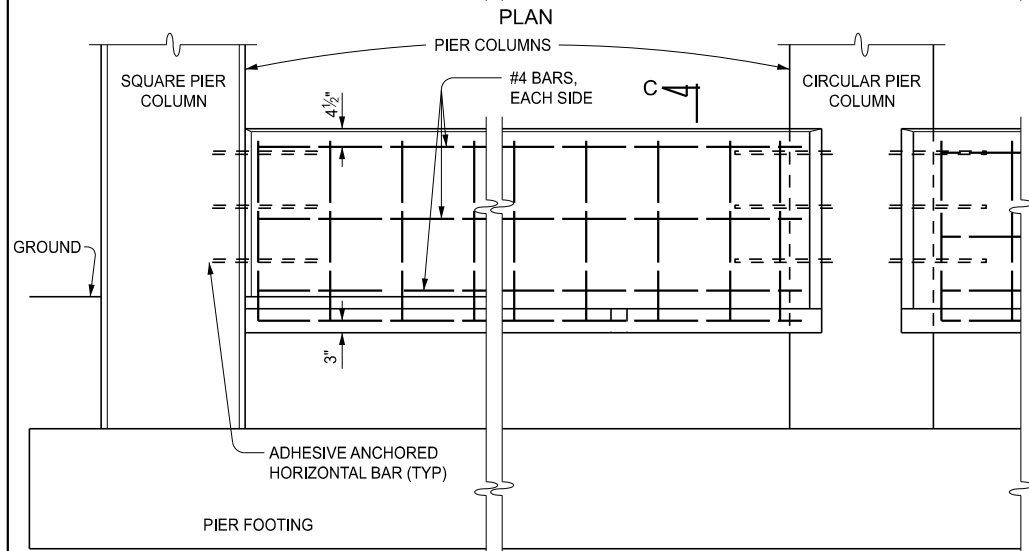
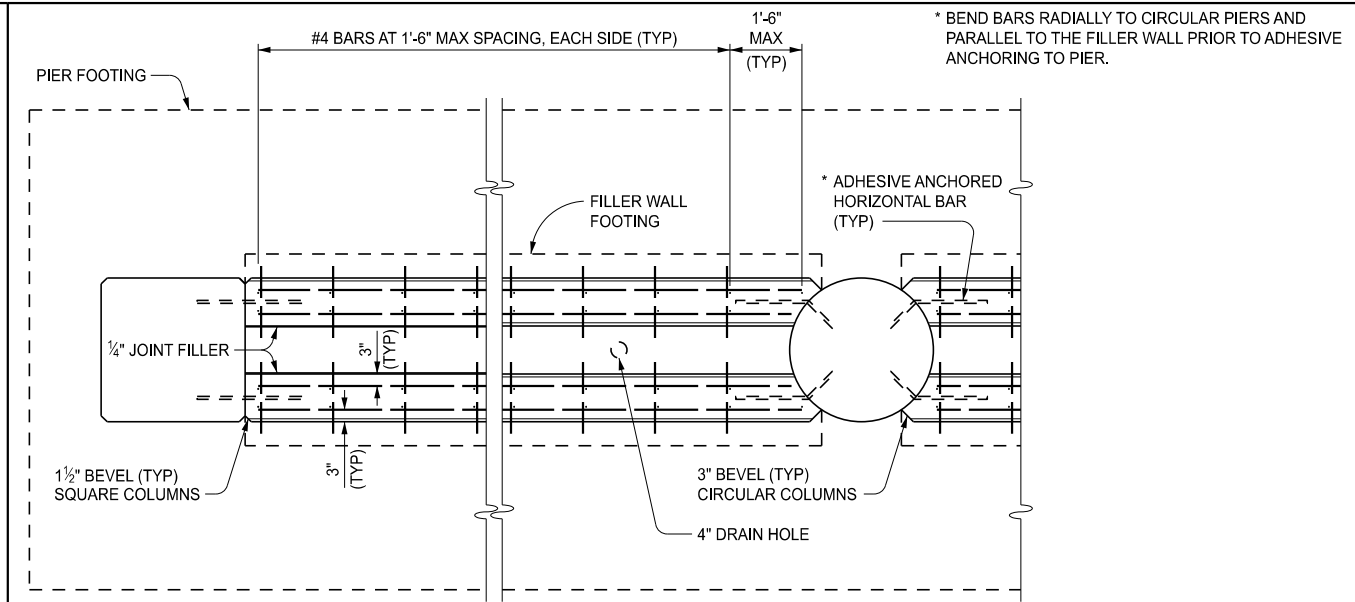
SECT



SECTION B-B


DETAILS FOR FILLER WALL END BLOCK
(SEE STANDARD PLAN R-67-SERIES FOR GUARDRAIL ATTACHMENT DETAILS)

 Michigan Department of Transportation	STANDARD PLAN FOR FILLER WALLS AT BRIDGE PIER COLUMNS			
	(SPECIAL DETAIL) FHWA APPROVAL	02/23/2026 PLAN DATE	R-55-H	SHEET 3 OF 5

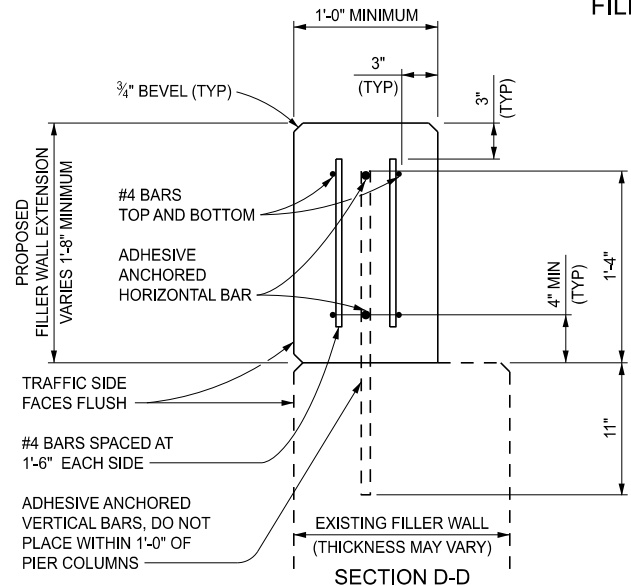
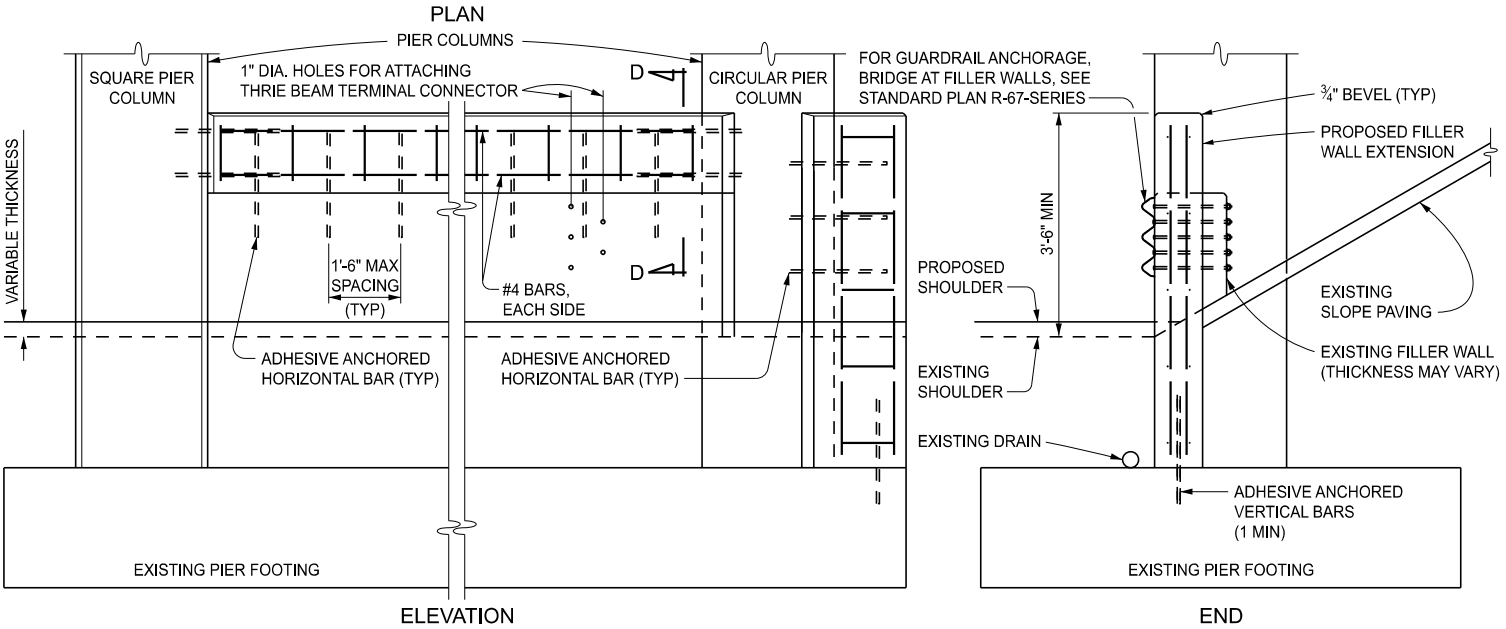
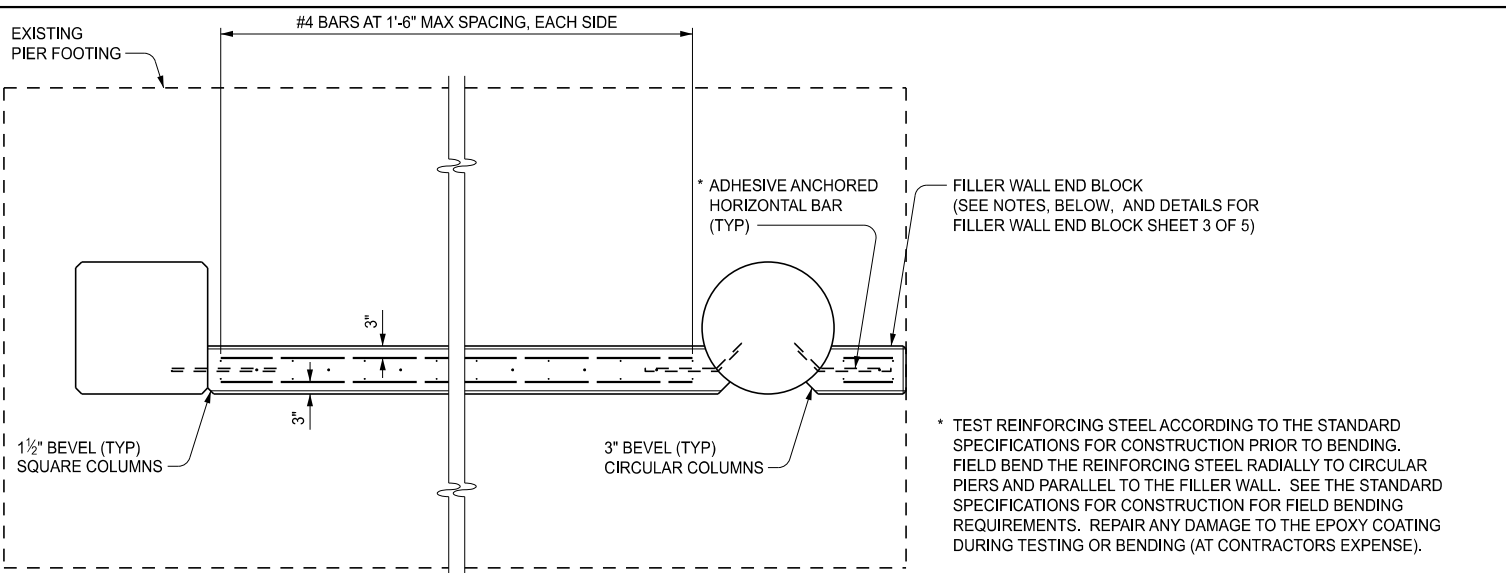


SECTION C-C

FILLER WALLS WITH FOOTINGS - MEDIAN PIERS

 Michigan Department of Transportation	STANDARD PLAN FOR FILLER WALLS AT BRIDGE PIER COLUMNS			
	(SPECIAL DETAIL) FHWA APPROVAL	02/23/2026 PLAN DATE	R-55-H	SHEET 4 OF 5

SECT



NOTES:

THE CONTRACTOR MAY FILL THE AREA BETWEEN THE FILLER WALLS AT THE MEDIAN PIERS WITH CONCRETE AT THEIR OPTION, WITH NO INCREASE IN COST TO THE DEPARTMENT.

ENSURE FILLER WALLS DO NOT ENTRAP WATER. PROVIDE DRAINAGE WITH WEEP HOLES, DRAIN HOLES, AND/OR RESHAPING THE SLOPES.

ENSURE TOP OF FILLER WALL IS PARALLEL WITH THE PAVEMENT GRADE.


PAY FOR THE MATERIALS AND LABOR REQUIRED TO CONSTRUCT FILLER WALL END BLOCKS AS FILLER WALL CONCRETE. SEE STANDARD SPECIFICATIONS FOR CONSTRUCTION FOR ADHESIVE ANCHORING OF HORIZONTAL / VERTICAL BARS.

SEE STANDARD PLAN R-67-SERIES WHEN ATTACHING GUARDRAIL TO FILLER WALLS.

ONLY USE APPROVED (BY THE ENGINEER) ALTERNATE METHODS TO ANCHOR THE BARS.

EPOXY COAT AND PAY SEPARATELY FOR ALL STEEL REINFORCEMENT BARS AND ADHESIVE ANCHORED HORIZONTAL / VERTICAL BARS .

INSTALL ADHESIVE ANCHORS PER MANUFACTURERS RECOMMENDATION EXCEPT AS MODIFIED ON THIS STANDARD.

 Michigan Department of Transportation	STANDARD PLAN FOR FILLER WALLS AT BRIDGE PIER COLUMNS			SHEET 5 OF 5
	(SPECIAL DETAIL) FHWA APPROVAL	02/23/2026 PLAN DATE	R-55-H	