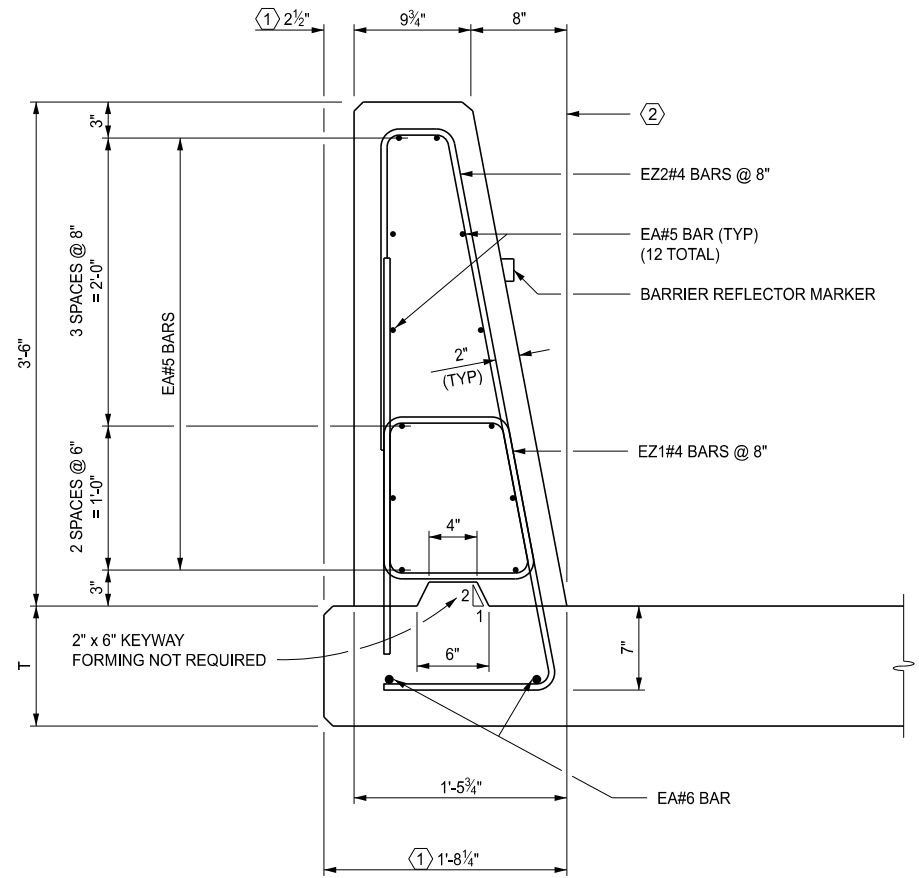


BRIDGE BARRIER RAILING, TYPE 6 OUTSIDE ELEVATION



SECTION A-A

NO AESTHETIC TREATMENT

- ① BACK OF BARRIER TO SLAB FASCIA MAY BE DECREASED TO 1½" (FROM 2½") AND TOE OF BARRIER SHIFTED ACCORDINGLY TO ACCOMMODATE THE NEED FOR INCREASED OR MAINTAINING SHOULDER WIDTHS. DISTANCE TO BE DETAILED ON THE PLANS.
- ② BRIDGE BARRIER ORIENTATION :
PERPENDICULAR TO PLANE OF SLAB ON NORMAL CROWN SECTION AND HIGH SIDE OF SUPERELEVATION SECTION.
VERTICAL ON LOW SIDE OF SUPERELEVATED SECTION.

APPROVED BY: _____
DIRECTOR, BUREAU OF BRIDGES AND STRUCTURES

APPROVED BY: _____
DIRECTOR, BUREAU OF FIELD SERVICES

APPROVED BY: _____
DIRECTOR, BUREAU OF DEVELOPMENT



DEPARTMENT DIRECTOR
BRADLEY C. WIEFERICH, PE

STANDARD PLAN FOR
BRIDGE BARRIER RAILING, TYPE 6

(SPECIAL DETAIL)
FHWA APPROVAL

12/17/2025
PLAN DATE

B-29-A

SHEET
1 OF 8



DEPARTMENT DIRECTOR
BRADLEY C. WIEFERICH, PE

STANDARD PLAN FOR
BRIDGE BARRIER RAILING, TYPE 6

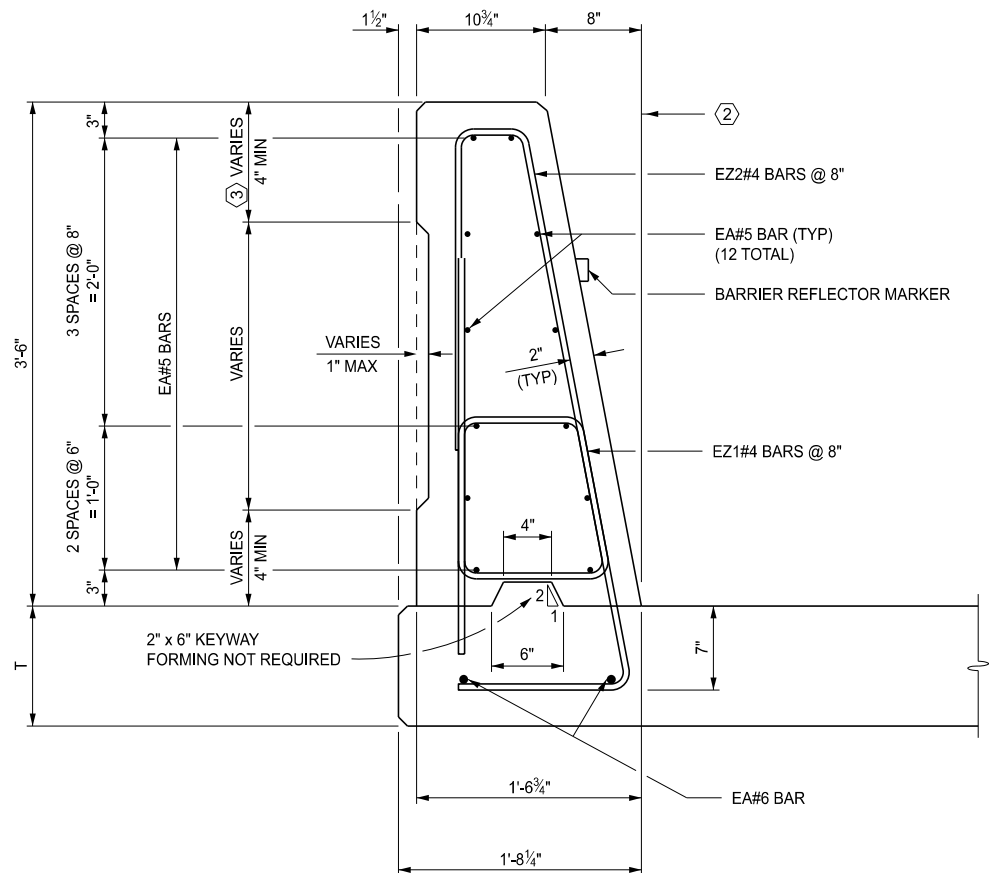
(SPECIAL DETAIL)
FHWA APPROVAL

12/17/2025
PLAN DATE

B-29-A


SHEET
2 OF 8

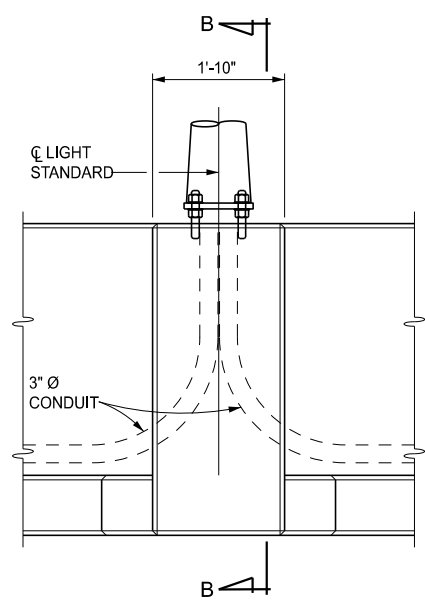
SECT



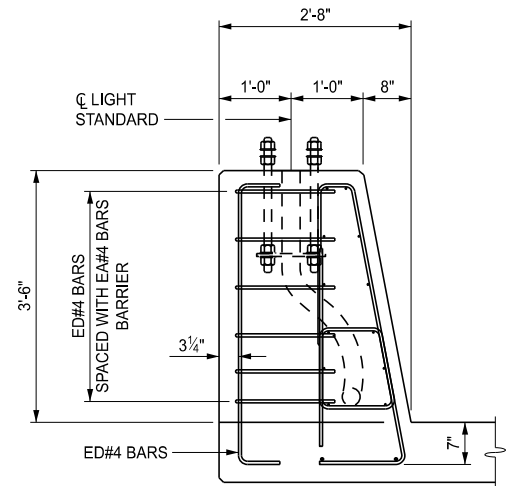
SECTION A-A
BRIDGE BARRIER RAILING, AESTHETIC, TYPE 6, DET 2
(THE TYPE AND LIMITS OF THE AESTHETIC TREATMENT,)
(IF APPLICABLE, ARE AS DETAILED ON THE PLANS.)

- ② BRIDGE BARRIER ORIENTATION :
PERPENDICULAR TO PLANE OF SLAB ON NORMAL CROWN SECTION AND HIGH SIDE OF SUPERELEVATION SECTION.
VERTICAL ON LOW SIDE OF SUPERELEVATED SECTION.
- ③ USE 10" MINIMUM WHEN PEDESTRIAN FENCE IS INSTALLED TO ACCOMMODATE THE DEPTH OF ANCHOR BOLTS. DISTANCE
TO BE DETAILED ON THE PLANS.

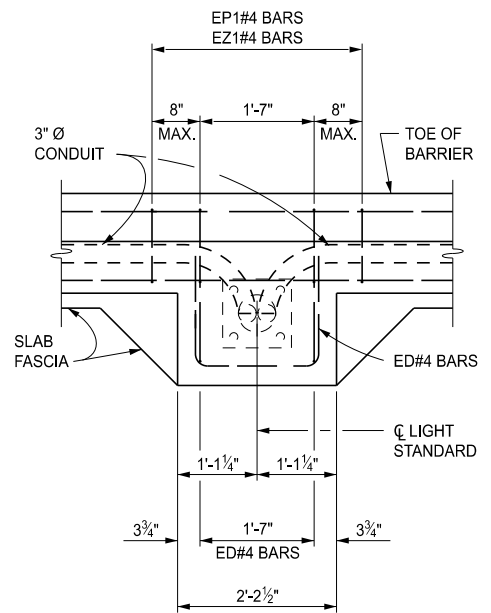
 Michigan Department of Transportation	STANDARD PLAN FOR BRIDGE BARRIER RAILING, TYPE 6			
	(SPECIAL DETAIL) FHWA APPROVAL	12/17/2025 PLAN DATE	B-29-A	SHEET 3 OF 8




ELEVATION VIEW



SECTION B-B
LIGHT STANDARD DETAILS
NO AESTHETIC TREATMENT ON LIGHT STANDARD 2'-2½" x 1'-2¼" PROTRUSION



PLAN VIEW

 Michigan Department of Transportation	STANDARD PLAN FOR BRIDGE BARRIER RAILING, TYPE 6			
	(SPECIAL DETAIL) FHWA APPROVAL	12/17/2025 PLAN DATE	B-29-A	SHEET 4 OF 8

SECT



(SPECIAL DETAIL)
FHWA APPROVAL

12/17/2025
PLAN DATE

SHEET
5 OF 8

* DEPENDANT UPON BRIDGE APPROACH LENGTH, THE TRANSITION SECTION CAN BE PARTLY ON BRIDGE DECK OR IF NO APPROACH SLAB IS PRESENT, ENTIRELY ON THE BRIDGE DECK.

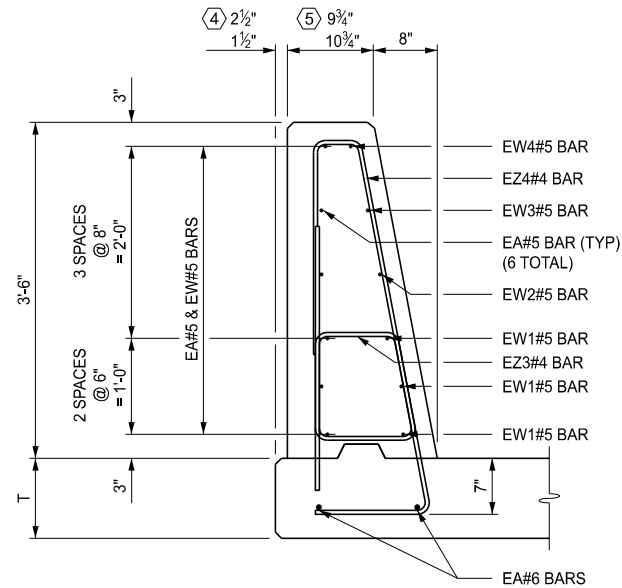


(SPECIAL DETAIL)
FHWA APPROVAL

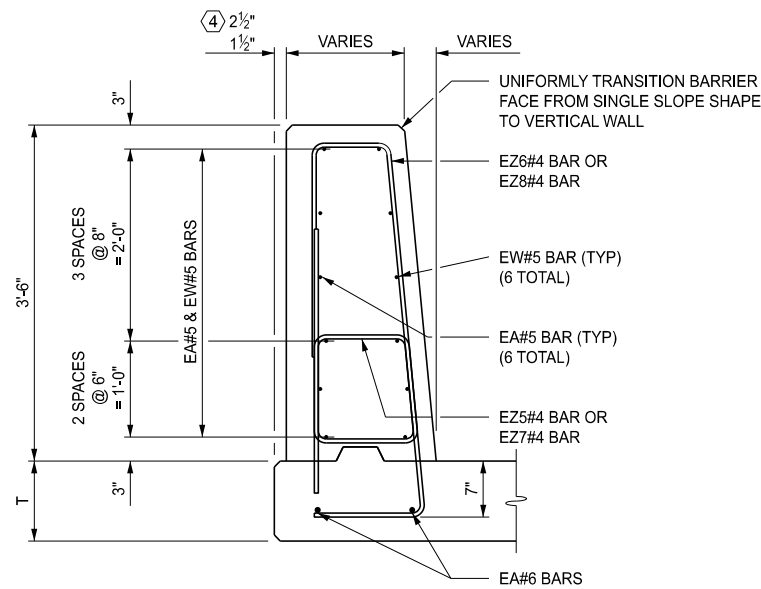
12/17/2025
PLAN DATE

SHEET
OF 8

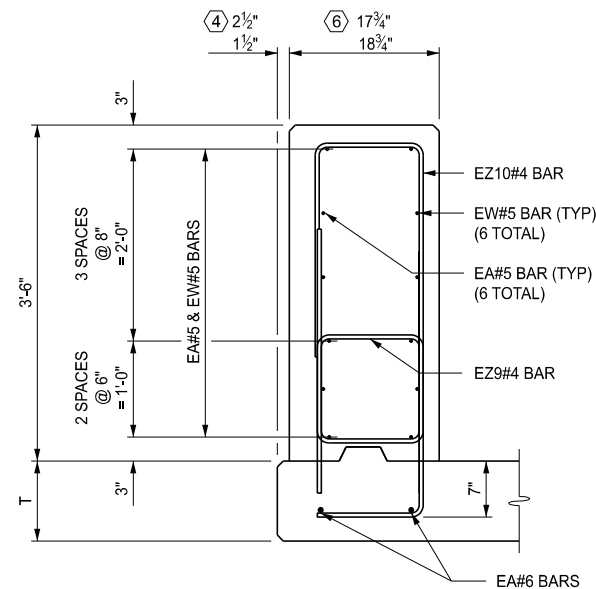
SECT



SECTION C-C




SECTION D-D



SECTION E-E

- 4) 2 1/2" BRIDGE BARRIER RAILING, TYPE 6 (+ SEE NOTES)
1 1/2" BRIDGE BARRIER RAILING, AESTHETIC, TYPE 6, DET 2
- 5) 9 3/4" BRIDGE BARRIER RAILING, TYPE 6 (+ SEE NOTES)
10 3/4" BRIDGE BARRIER RAILING, AESTHETIC, TYPE 6, DET 2
- 6) 17 3/4" BRIDGE BARRIER RAILING, TYPE 6 (+ SEE NOTES)
18 3/4" BRIDGE BARRIER RAILING, AESTHETIC, TYPE 6, DET 2

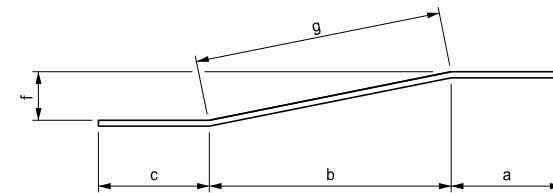


Michigan Department of Transportation

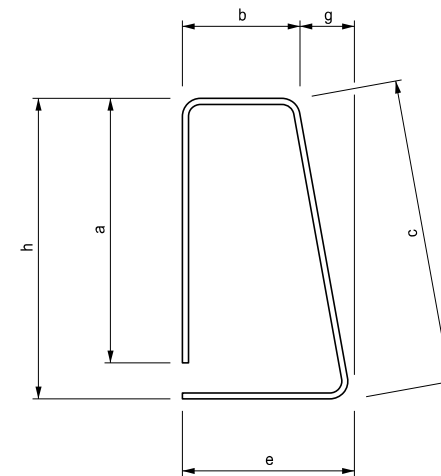
DEPARTMENT DIRECTOR
BRADLEY C. WIEFERICH, PE

STANDARD PLAN FOR
BRIDGE BARRIER RAILING, TYPE 6

(SPECIAL DETAIL)	12/17/2025	B-29-A	SHEET 7 OF 8
FHWA APPROVAL	PLAN DATE		

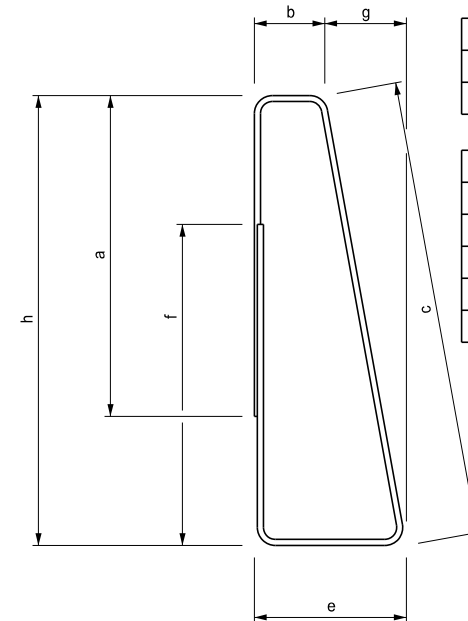


ENDWALL TRANSITION SECTION BARS							
	# of bars	c	b	a	g	f	
EW1	3	2'-2"	2'-8"	7'-6"	2'-8"	1 1/8"	EW051204
EW2	1	2'-2"	6'-0"	4'-2 7/8"	6'-0 1/8"	4 1/4"	EW051205
EW3	1	2'-2"	6'-0"	4'-3 3/4"	6'-0 1/4"	5 3/4"	EW051206
EW4	1	2'-2"	6'-0"	4'-4 3/8"	6'-0 3/8"	6 7/8"	EW051207
L = c + a + g							



BARRIER SECTION BARS							
	# of bars	a	b	c	e	g	h
EZ1	--	1'-8 1/8"	10 3/4"	1'-11 1/8"	1'-3"	4 1/4"	1'-10 3/4"
L = a + b + c + e							

ENDWALL TRANSITION SECTION BARS								
	# of bars	a	b	c	e	g	h	
EZ3	2	1'-8"	10 3/8"	1'-11 1/8"	1'-2 1/2"	4 1/8"	1'-10 3/4"	EZ040508
EZ5	3	1'-7 3/4"	11"	1'-11"	1'-2 1/4"	3 1/4"	1'-10 3/4"	EZ040508
EZ7	4	1'-7 1/2"	11 3/4"	1'-10 7/8"	1'-1 7/8"	2 1/8"	1'-10 3/4"	EZ040508
EZ9	6	1'-7 3/4"	1'-10 3/4"	1'-10 3/4"	1'-1 3/4"	--	1'-10 3/4"	EZ040510
L = a + b + c + e								



BARRIER SECTION BARS								
	# of bars	a	b	c	e	f	g	h
EZ2	--	2'-3 3/8"	6 1/8"	3'-2 1/4"	1'-1 1/4"	2'-3"	7 1/8"	3'-1 5/8"
L = a + b + c + e + f								


ENDWALL TRANSITION SECTION BARS								
	# of bars	a	b	c	e	f	g	h
EZ4	2	2'-3 1/2"	6 1/2"	3'-2"	1'-1"	2'-3"	6 1/2"	3'-1 1/2"
EZ6	3	2'-3 7/8"	8 1/8"	3'-1 7/8"	1'-1 1/8"	2'-3"	5"	3'-1 1/2"
EZ8	4	2'-3 5/8"	10 1/2"	3'-1 5/8"	1'-1 1/4"	2'-3"	2 3/4"	3'-1 1/2"
EZ10	6	2'-3 1/2"	1'-1 1/2"	3'-1 1/2"	1'-1 1/2"	2'-3"	--	3'-1 1/2"
L = a + b + c + e + f								

NOTES:

DETAILS SHOWN ARE ACCORDING TO AASHTO SPECIFICATIONS.

SEE STANDARD PLAN B-103-SERIES FOR LIGHT STANDARD ANCHOR BOLT ASSEMBLY DETAILS,

ALL WORK AND MATERIAL ARE ACCORDING TO THE STANDARD SPECIFICATIONS FOR CONSTRUCTION.



Michigan Department of Transportation

DEPARTMENT DIRECTOR
BRADLEY C. WIEFERICH, PE

STANDARD PLAN FOR
BRIDGE BARRIER RAILING, TYPE 6

(SPECIAL DETAIL)	12/17/2025	B-29-A	SHEET 8 OF 8
FHWA APPROVAL	PLAN DATE		