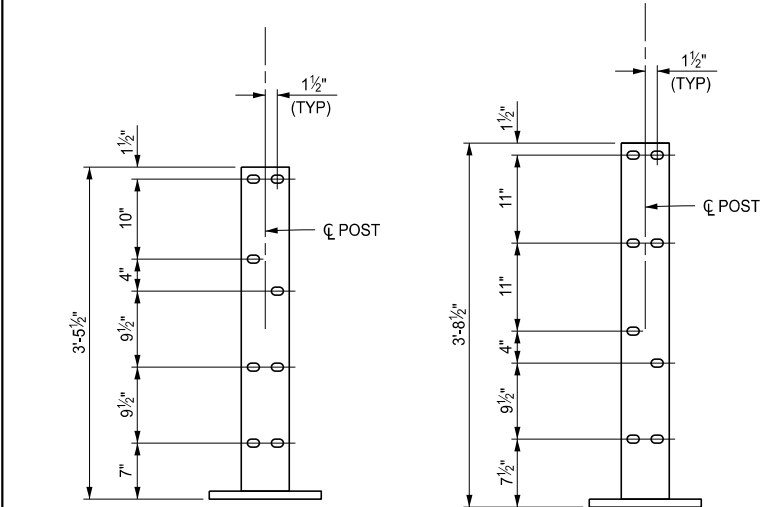


PEDESTRIAN BRIDGE RAILING

BICYCLE BRIDGE RAILING



POST DETAILS

NOTES:

DETAILS SHOWN ARE ACCORDING TO CURRENT AASHTO SPECIFICATIONS.


ALL WORK AND MATERIALS SHALL BE ACCORDING TO THE STANDARD SPECIFICATIONS FOR CONSTRUCTION.

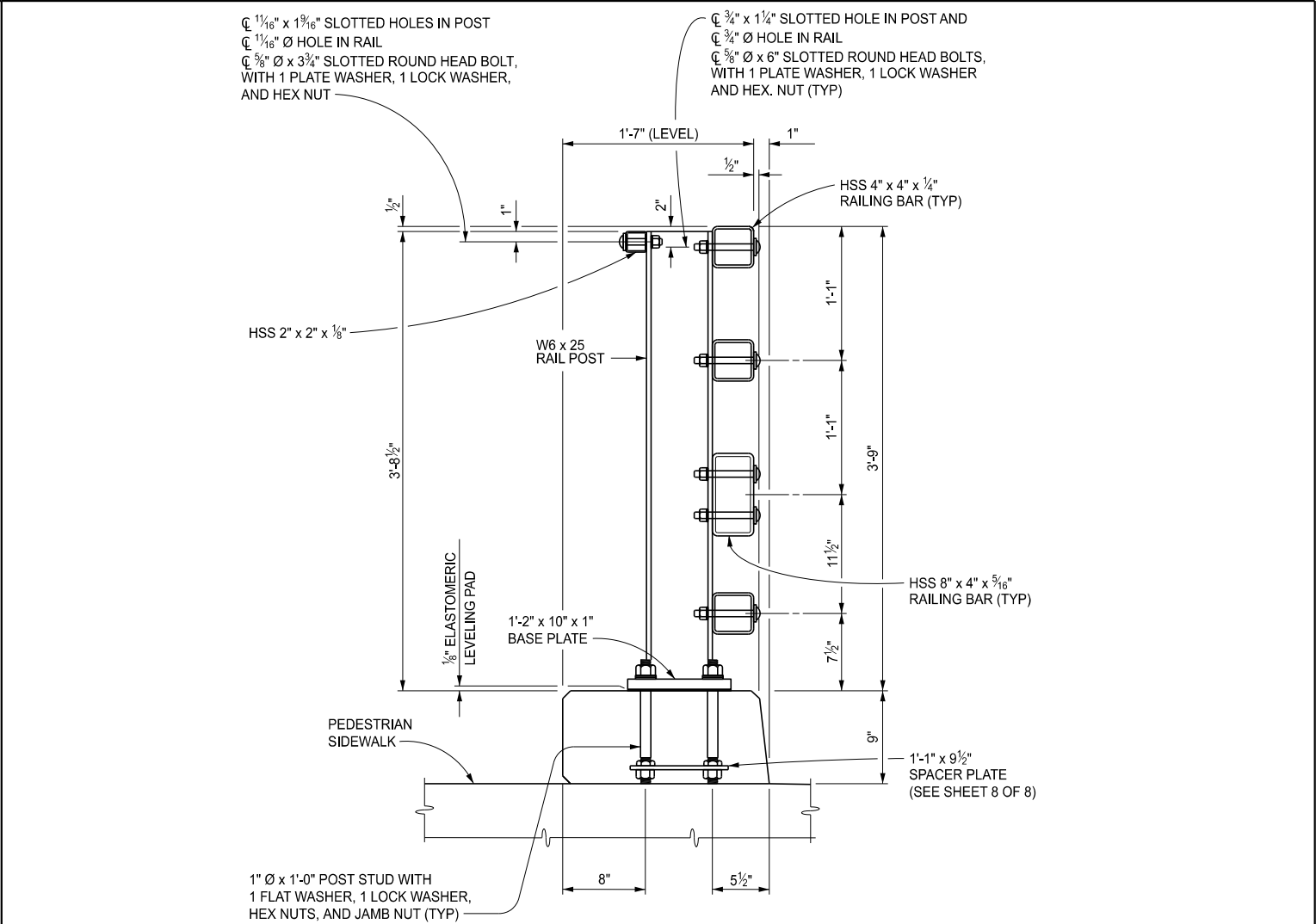
THE BICYCLE BRIDGE RAILING SHALL BE USED ONLY WITH THE BRUSH BLOCK SHOWN ON THIS SHEET.

FOR LIGHT STANDARD ANCHOR BOLT ASSEMBLY DETAILS, SEE STANDARD PLAN B-103-SERIES.

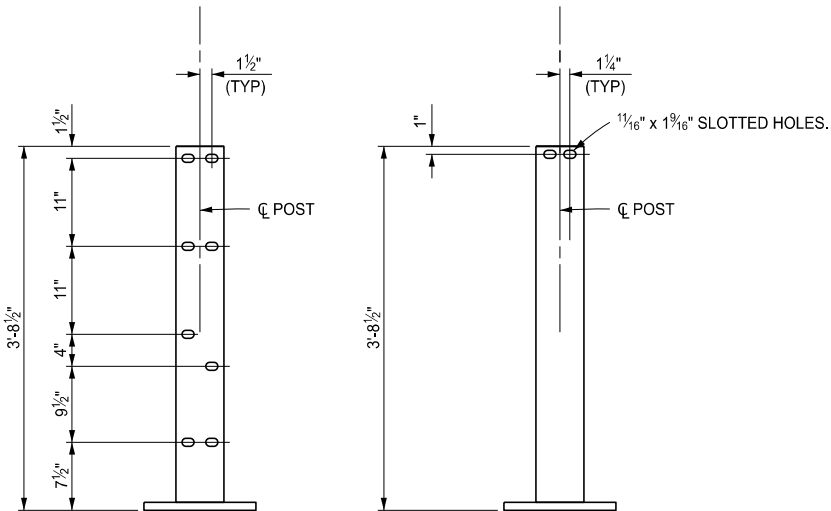
USE THE HSS 2" x 2" x 1/8" RAIL AND CORRESPONDING DETAILS ONLY WHEN A SIDEWALK IS LOCATED BEHIND THE 4 TUBE RAILING. SEE SHEETS 2, 3 AND 4.

ALL LABOR, MATERIALS AND EQUIPMENT REQUIRED TO INSTALL THE HSS 2" x 2" x 1/8" RAIL SHALL BE INCLUDED IN THE BID ITEM "BRIDGE RAILING, 4 TUBE".

APPROVED BY: _____ DIRECTOR, BUREAU OF BRIDGES AND STRUCTURES	 Michigan Department of Transportation	STANDARD PLAN FOR BRIDGE RAILING, 4 TUBE			SHEET 1 OF 8
APPROVED BY: _____ DIRECTOR, BUREAU OF FIELD SERVICES		(SPECIAL DETAIL)	09/06/2024	B-26-G	
APPROVED BY: _____ DIRECTOR, BUREAU OF DEVELOPMENT		FHWA APPROVAL	PLAN DATE		




BICYCLE BRIDGE RAILING
WITH SIDEWALK

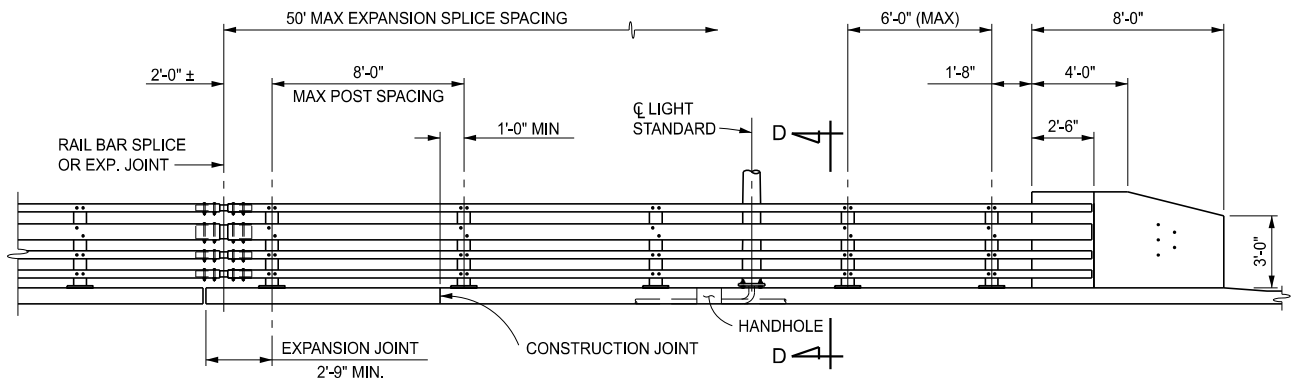


FRONT FLANGE

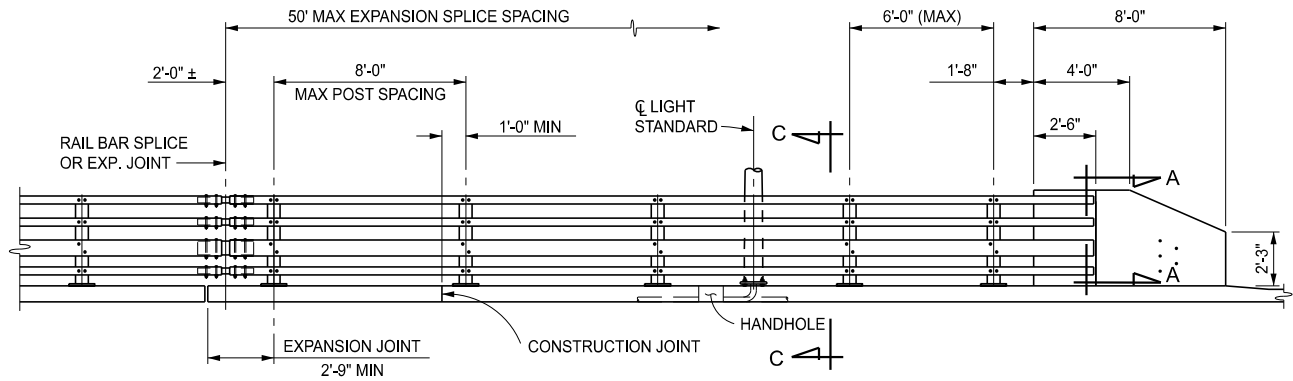
BACK FLANGE

POST DETAILS

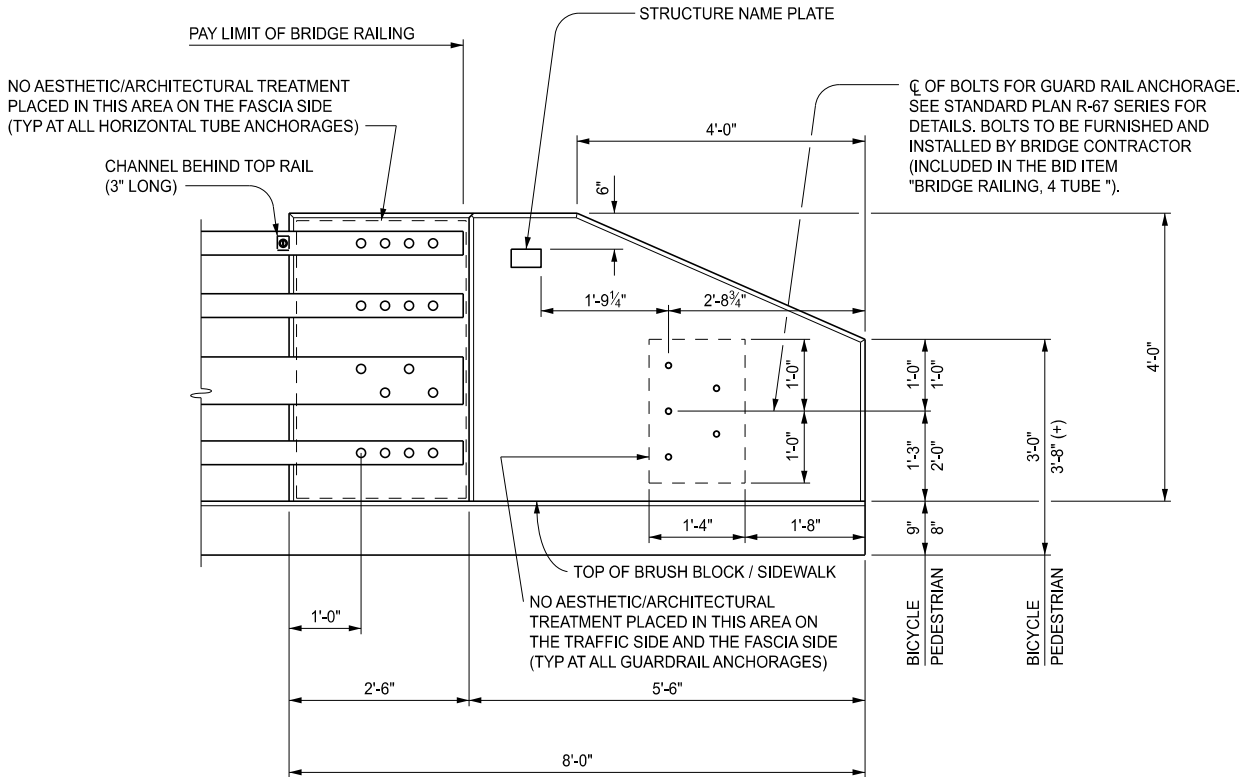
 Michigan Department of Transportation	STANDARD PLAN FOR BRIDGE RAILING, 4 TUBE			SHEET 2 OF 8
	(SPECIAL DETAIL)	09/06/2024	B-26-G	
	FHWA APPROVAL	PLAN DATE		



PEDESTRIAN RAILING




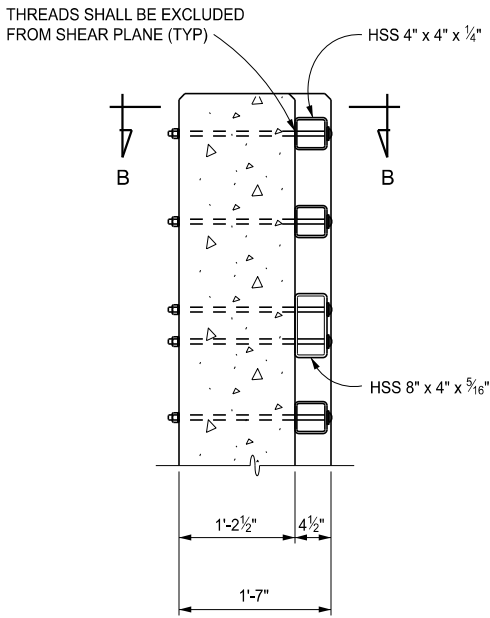
BICYCLE RAILING



END WALL ELEVATIONS

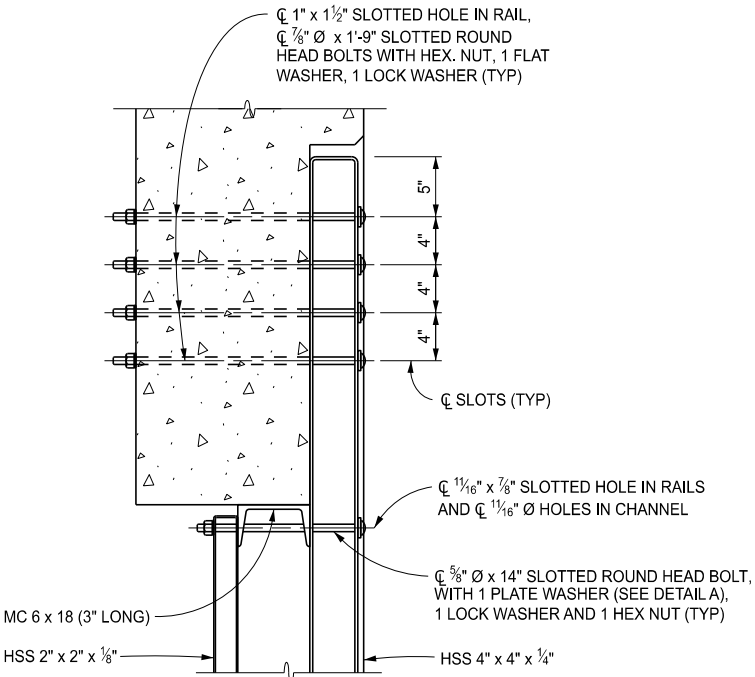
BICYCLE RAILING SHOWN
PEDESTRIAN RAILING SIMILAR

 Michigan Department of Transportation	STANDARD PLAN FOR BRIDGE RAILING, 4 TUBE			
	(SPECIAL DETAIL)	09/06/2024	B-26-G	SHEET 3 OF 8
	FHWA APPROVAL	PLAN DATE		

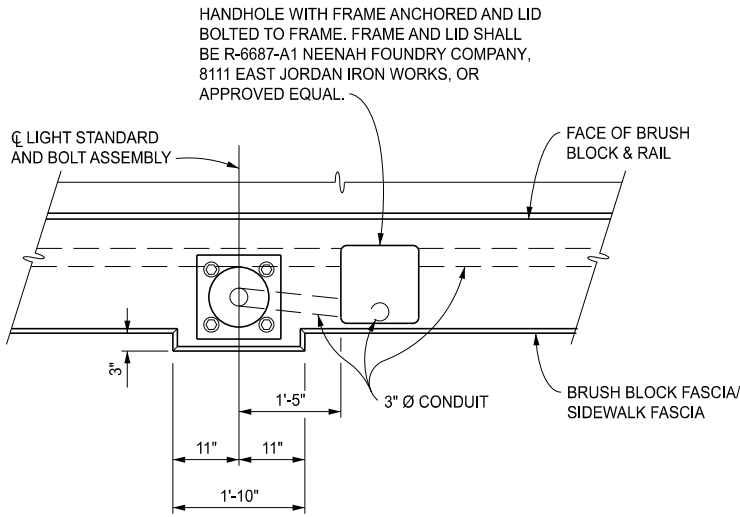


SECTION A-A

BICYCLE RAILING SHOWN
PEDESTRIAN RAILING SIMILAR

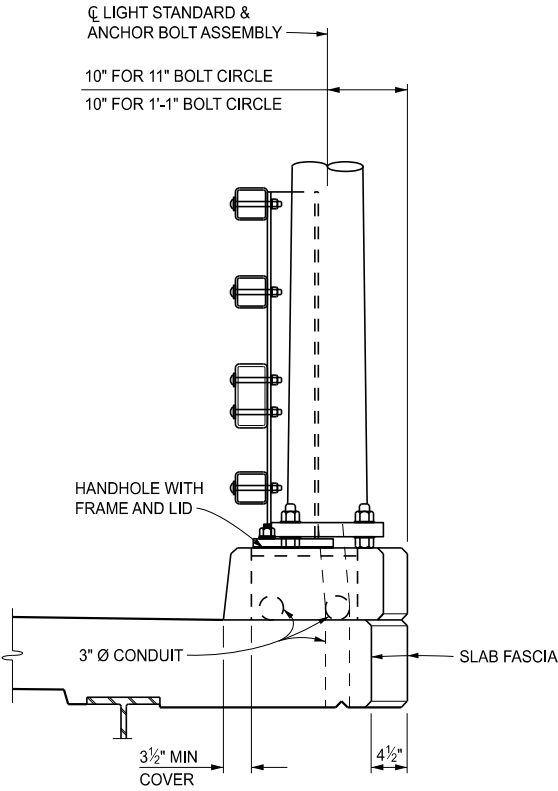


SECTION B-B




PLAN VIEW AT LIGHT STANDARD

BICYCLE RAILING

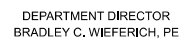


SECTION C-C

BICYCLE RAILING

 Michigan Department of Transportation	STANDARD PLAN FOR BRIDGE RAILING, 4 TUBE			
	(SPECIAL DETAIL)	09/06/2024	B-26-G	SHEET 4 OF 8
	FHWA APPROVAL	PLAN DATE		

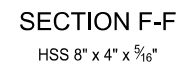
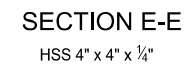
SECT



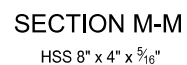
(SPECIAL DETAIL)
FHWA APPROVAL

B-26-G

SHEET
5 OF 8



SECTION L-L
HSS 4" x 4" x 1/4"



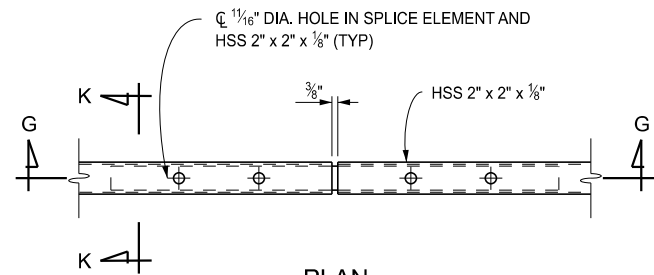
DEPARTMENT DIRECTOR
BRADLEY C. WIEFERICH, PE

(SPECIAL DETAIL)
FHWA APPROVAL

B-26-G

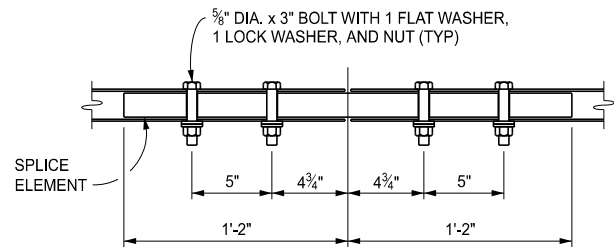
SHEET
6 OF 8

SECT



PLAN

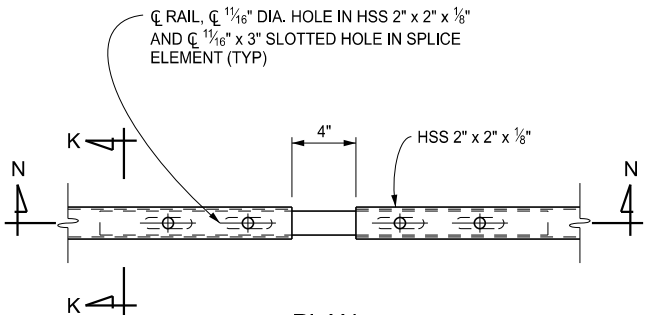
HSS 2" x 2" x 1/8"



SECTION G-G

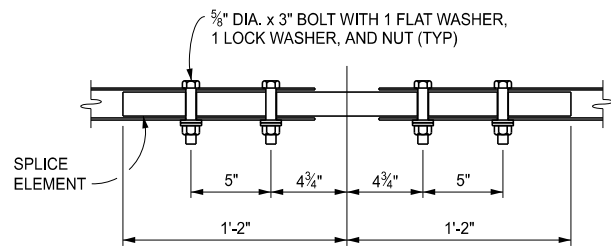
HSS 2" x 2" x 1/8"

FIXED SPLICE DETAILS



PLAN

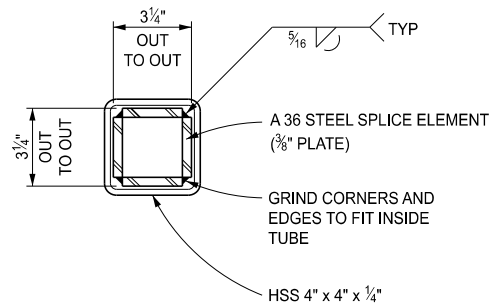
HSS 2" x 2" x 1/8"



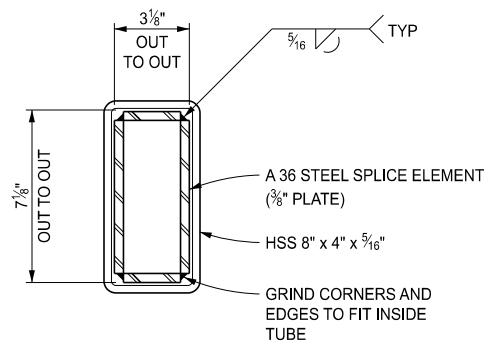
SECTION N-N

HSS 2" x 2" x 1/8"

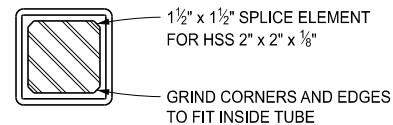
EXPANSION SPLICE DETAILS



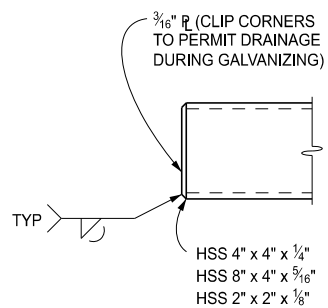
SECTION H-H



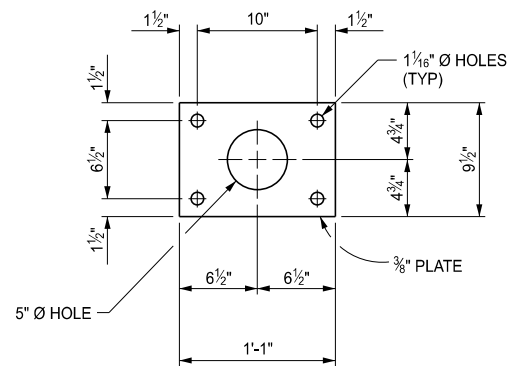
SECTION J-J



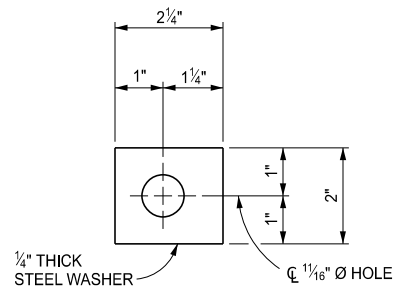
SECTION K-K



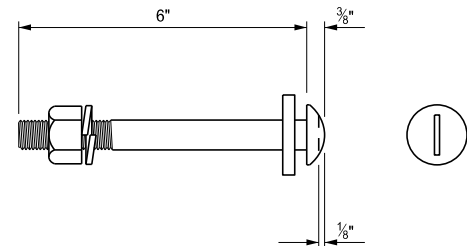
END OF RAIL



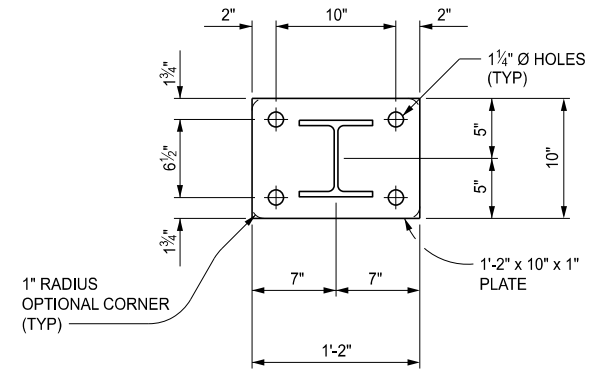
SPACER PLATE PLAN



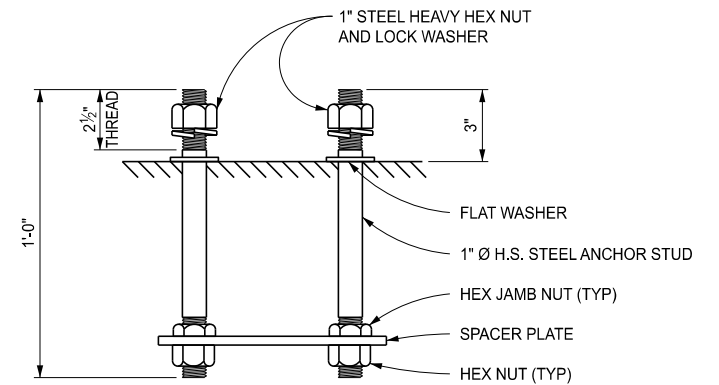
DETAIL A



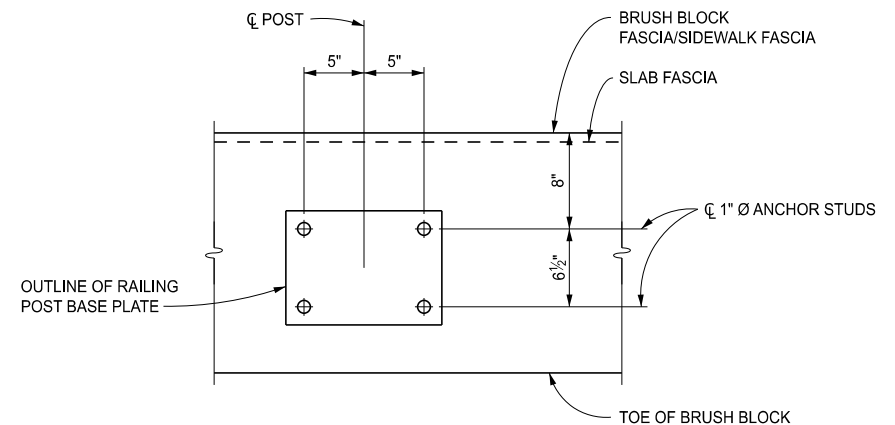
5/8" Ø ROUND HEAD BOLT
WITH PLATE WASHER (SEE DETAIL A),
LOCK WASHER AND HEX NUT



POST & BASE PLATE PLAN



POST STUD ANCHORAGE



ANCHOR STUD LAYOUT

NOTE: SURFACE UNDER POST IS
TO BE FINISHED LEVEL



DEPARTMENT DIRECTOR
BRADLEY C. WIEFERICH, PE

(SPECIAL DETAIL)
FHWA APPROVAL

09/06/2024
PLAN DATE

B-26-G

SHEET
7 OF 8



DEPARTMENT DIRECTOR
BRADLEY C. WIEFERICH, PE

(SPECIAL DETAIL)
FHWA APPROVAL

09/06/2024
PLAN DATE

B-26-G

SHEET
8 OF 8

SECT