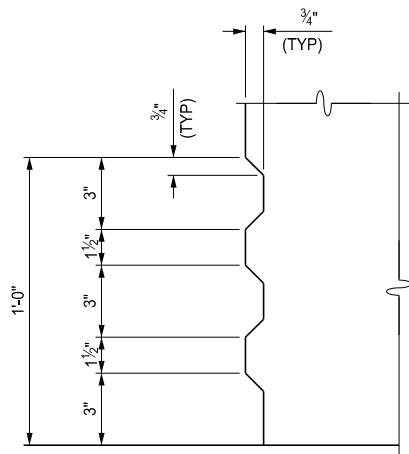


FLUSH MOUNT BRIDGE RAILING



AESTHETIC TREATMENT DETAIL

NOTES:

ALL WORK AND MATERIAL SHALL BE IN ACCORDANCE WITH THE STANDARD SPECIFICATIONS FOR CONSTRUCTION.

DETAILS SHOWN ARE IN ACCORDANCE WITH AASHTO SPECIFICATIONS.

BRIDGE RAILING USED WITH SIDEWALK SHALL BE USED ONLY WITH THE SIDEWALK CONFIGURATION (PROFILE) SHOWN ON THIS STANDARD PLAN.

NO SLIP FORMING OF "BRIDGE RAILING, AESTHETIC PARAPET TUBE" SHALL BE ALLOWED. RAILING SHALL BE CAST IN PLACE.

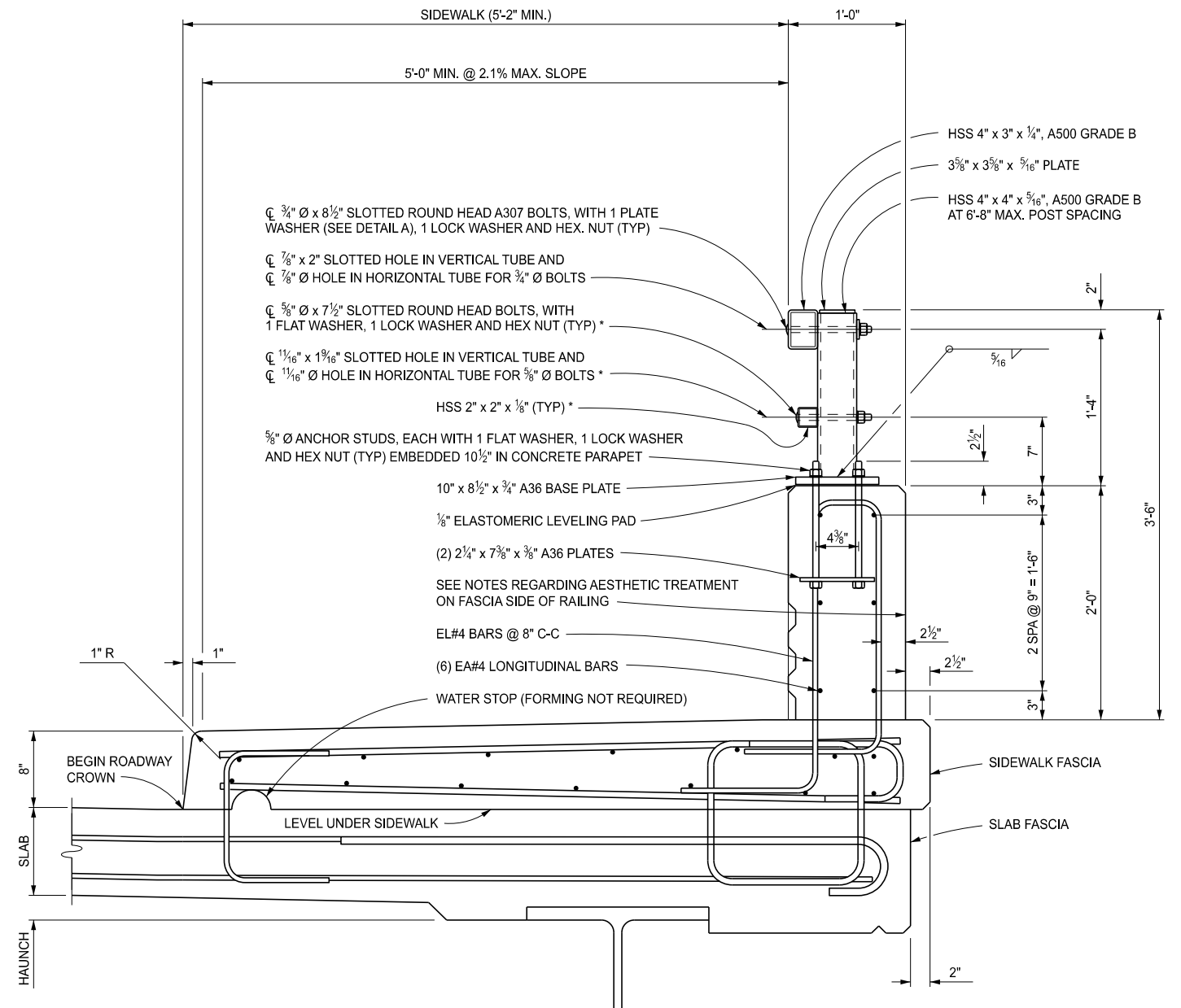
THE LIGHT STANDARD ANCHOR BOLT ASSEMBLY IS INCLUDED IN THE BID ITEM "BRIDGE RAILING, AESTHETIC PARAPET TUBE". SEE STANDARD PLAN B-103-SERIES.

FOR LIGHT STANDARD ANCHOR BOLT ASSEMBLY DETAILS, IF BRIDGE RAILING, AESTHETIC PARAPET TUBE IS PLACED FLUSH ON THE BRIDGE DECK (WITHOUT SIDEWALK), THE LIGHTING CONDUIT SHALL NOT BE PLACED IN THE RAILING.

A RUBBED FINISH ON THE VERTICAL AND TOP CONCRETE SURFACES OF THE PARAPET RAILING IS REQUIRED.

AESTHETIC TREATMENT AS DETAILED ON THIS SHEET SHALL BE ADDED TO THE FASCIA SIDE OF RAILING IF NO AESTHETIC TREATMENT IS DETAILED ON THE PLAN SHEETS AND SHALL BE INCLUDED IN THE BID ITEM "BRIDGE RAILING, AESTHETIC PARAPET TUBE". AESTHETIC TREATMENT DETAILED ON THE PLAN SHEETS MAY BE UP TO 1" IN CONCRETE DEPTH WITHOUT MODIFICATION TO THE RAILING WIDTH AND SHALL BE INCLUDED IN THE BID ITEM "BRIDGE RAILING, AESTHETIC PARAPET TUBE". AESTHETIC TREATMENT REQUIRING ADDITIONAL RAILING WIDTH OR THE USE OF ELASTOMERIC FORM LINERS SHALL BE PAID FOR SEPARATELY.

\* THE HSS 2" x 2" x 1/8" RAIL, SLOTTED HOLE, AND 5/8" BOLT ARE NOT REQUIRED WHEN RAILING IS USED IN COMBINATION WITH PEDESTRIAN FENCING (SEE STANDARD PLAN B-41-SERIES).



BRIDGE RAILING WITH SIDEWALK

APPROVED BY: \_\_\_\_\_  
DIRECTOR, BUREAU OF BRIDGES AND STRUCTURES

APPROVED BY: \_\_\_\_\_  
DIRECTOR, BUREAU OF FIELD SERVICES

APPROVED BY: \_\_\_\_\_  
DIRECTOR, BUREAU OF DEVELOPMENT



DEPARTMENT DIRECTOR  
BRADLEY C. WIEFERICH, PE

STANDARD PLAN FOR  
BRIDGE RAILING, AESTHETIC PARAPET TUBE

(SPECIAL DETAIL)  
FHWA APPROVAL

09/09/2024  
PLAN DATE

B-25-L

SHEET  
1 OF 8



DEPARTMENT DIRECTOR  
BRADLEY C. WIEFERICH, PE

STANDARD PLAN FOR  
BRIDGE RAILING, AESTHETIC PARAPET TUBE

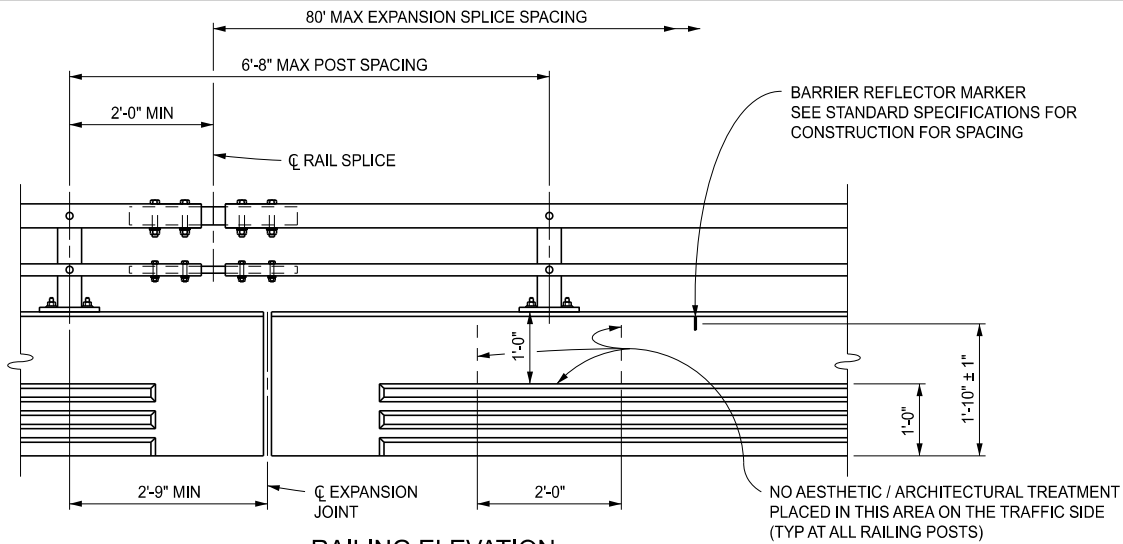
(SPECIAL DETAIL)  
FHWA APPROVAL

09/09/2024  
PLAN DATE

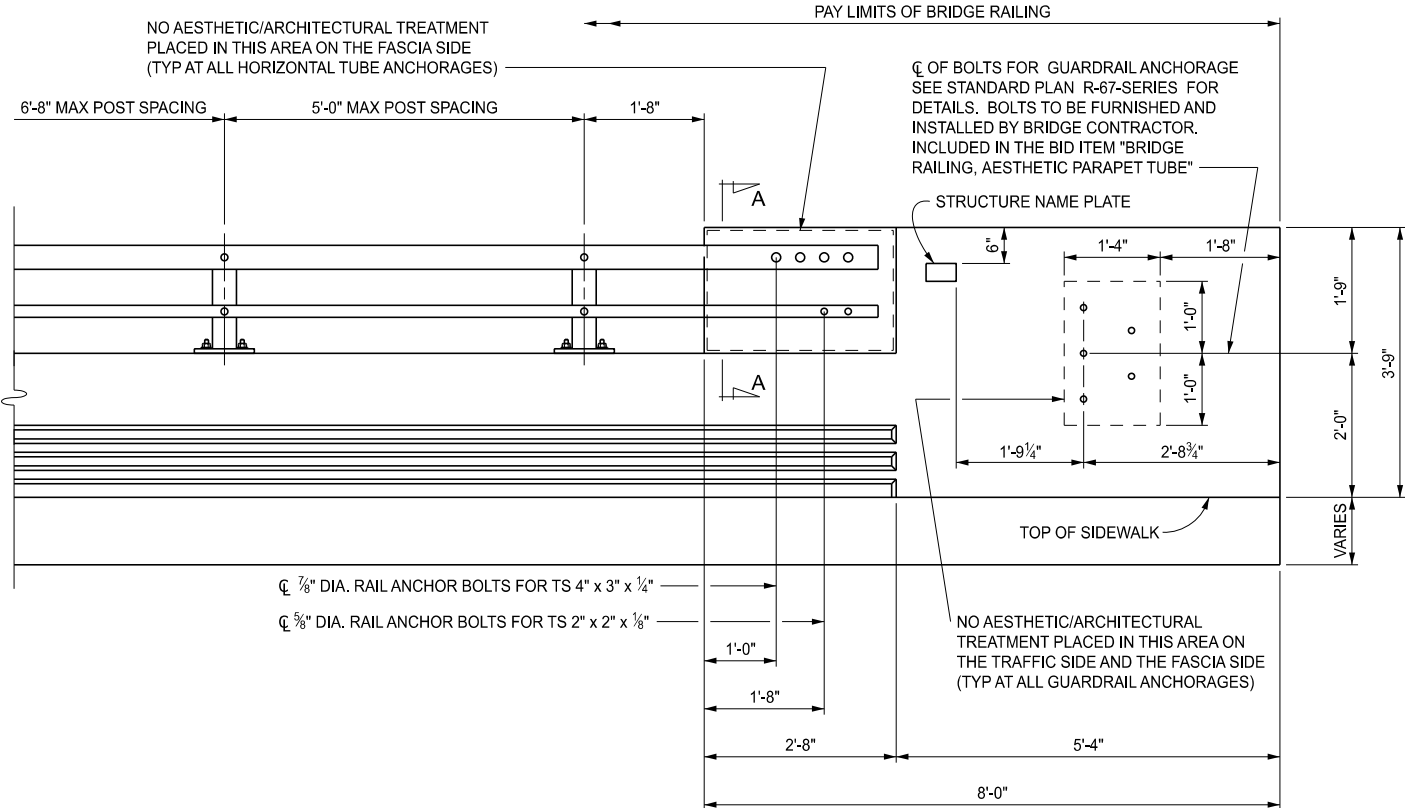
B-25-L

SHEET  
2 OF 8

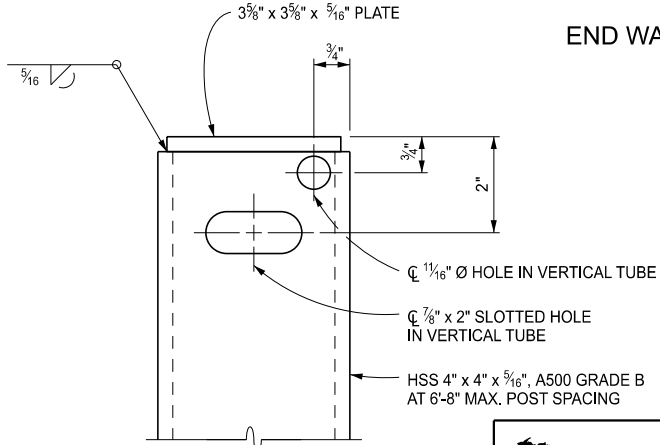
SECT



RAILING ELEVATION



END WALL ELEVATION



VERTICAL TUBE DETAIL  
FRONT VIEW



DEPARTMENT DIRECTOR  
BRADLEY C. WIEFERICH, PE

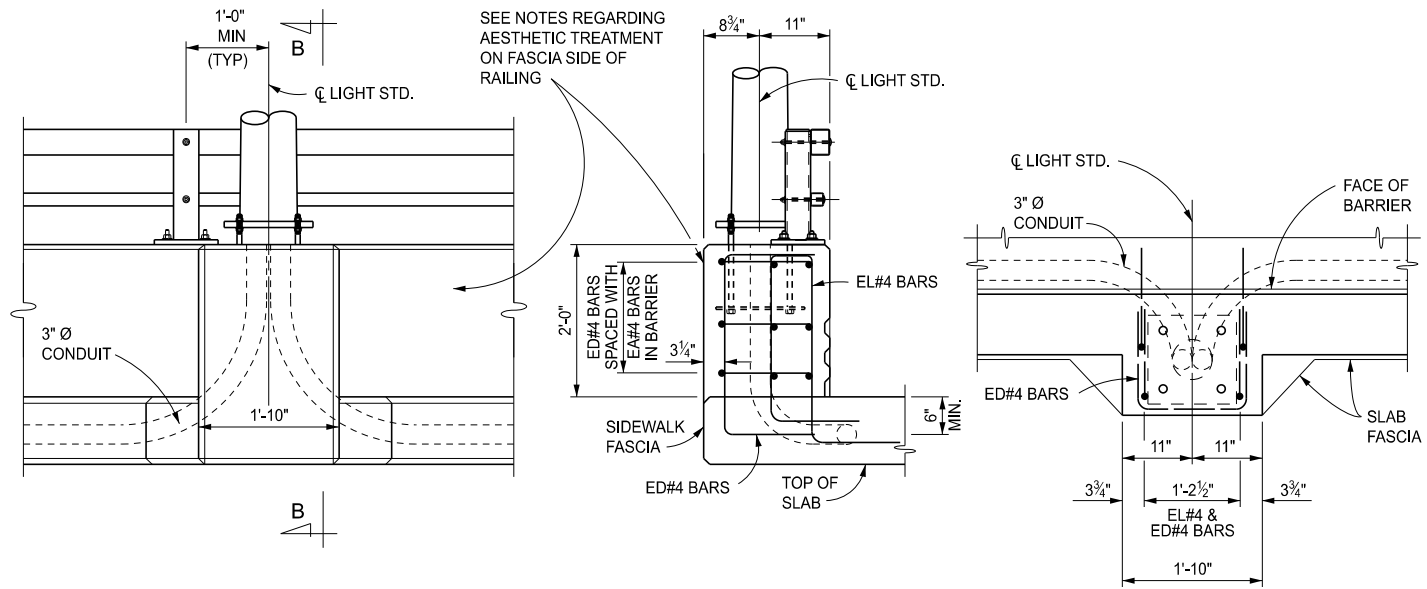
STANDARD PLAN FOR  
BRIDGE RAILING, AESTHETIC PARAPET TUBE

(SPECIAL DETAIL)  
FHWA APPROVAL

09/09/2024  
PLAN DATE

B-25-L

SHEET  
3 OF 8

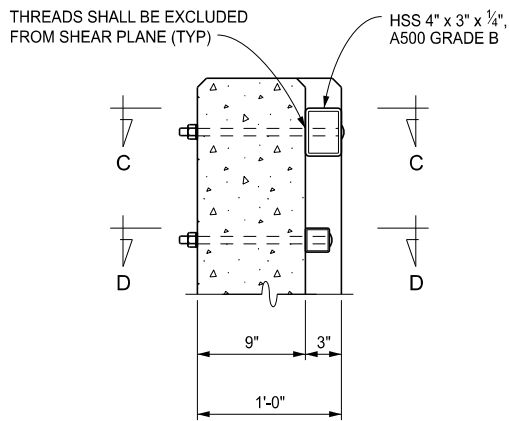


ELEVATION VIEW

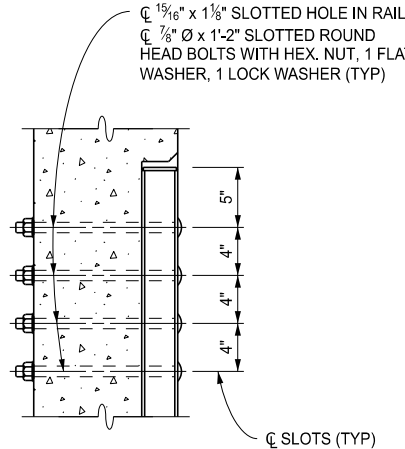
SECTION B-B

PLAN VIEW

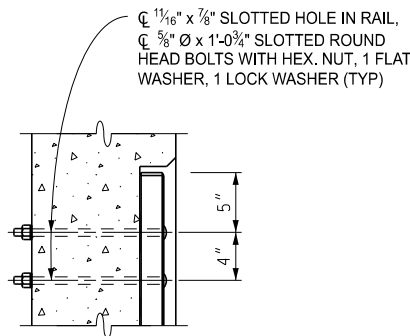
LIGHT STANDARD DETAILS



SECTION A-A



SECTION C-C



SECTION D-D



DEPARTMENT DIRECTOR  
BRADLEY C. WIEFERICH, PE

STANDARD PLAN FOR  
BRIDGE RAILING, AESTHETIC PARAPET TUBE

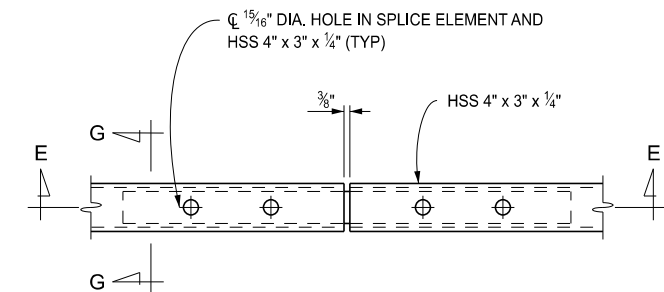
(SPECIAL DETAIL)  
FHWA APPROVAL

09/09/2024  
PLAN DATE

B-25-L

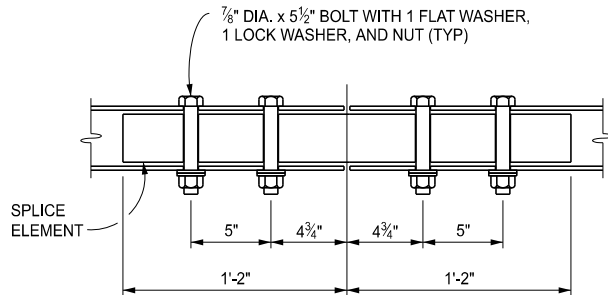
SHEET  
4 OF 8

SECT



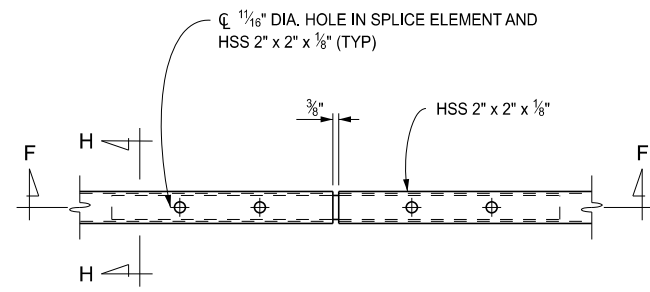
PLAN

HSS 4" x 3" x 1/4"



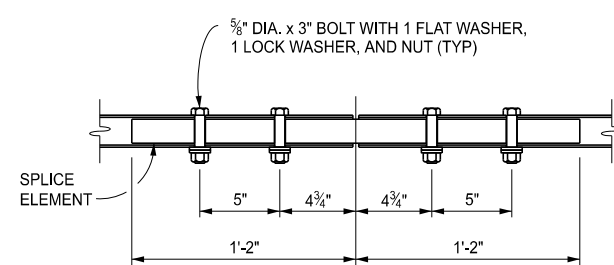
SECTION E-E

HSS 4" x 3" x 1/4"



PLAN

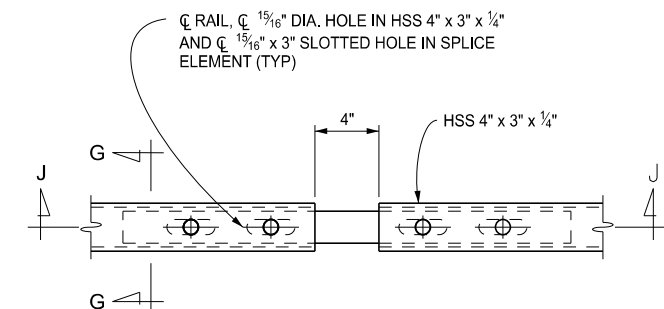
HSS 2" x 2" x 1/8"



SECTION F-F

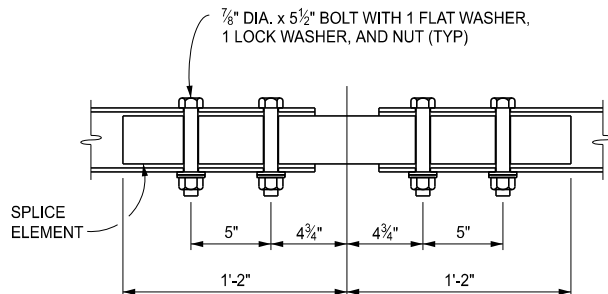
HSS 2" x 2" x 1/8"

FIXED SPLICE DETAILS



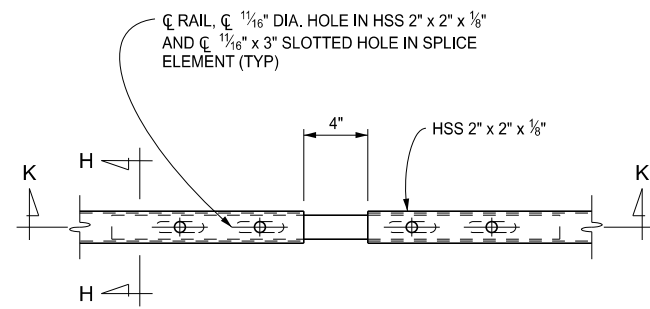
PLAN

HSS 4" x 3" x 1/4"



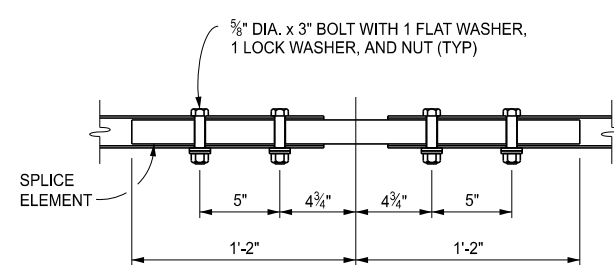
SECTION J-J

HSS 4" x 3" x 1/4"



PLAN

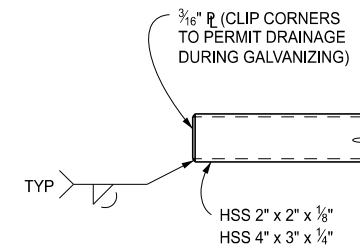
HSS 2" x 2" x 1/8"



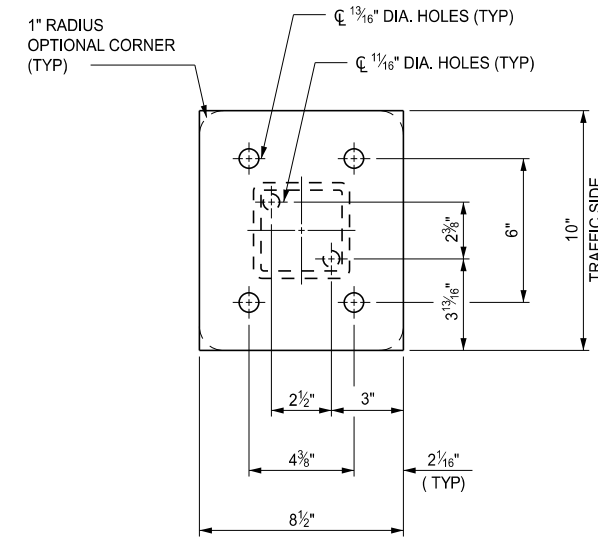
SECTION K-K

HSS 2" x 2" x 1/8"

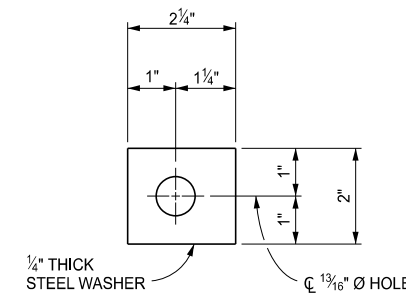
EXPANSION SPLICE DETAILS



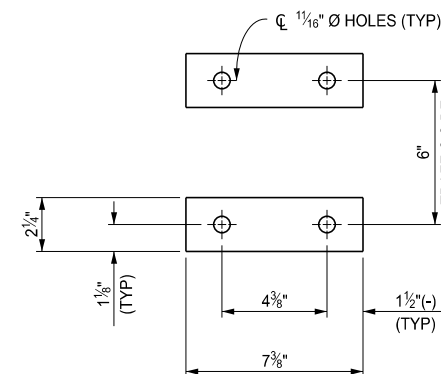
END OF RAIL



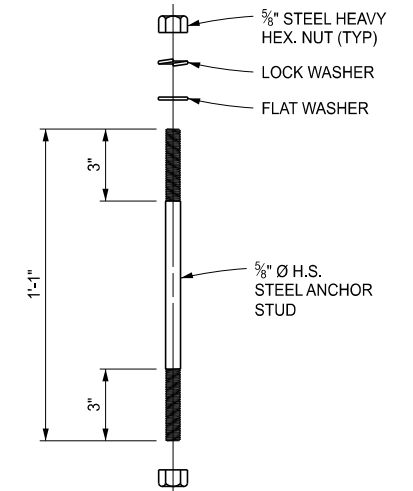
EXTERIOR BASE PLATE



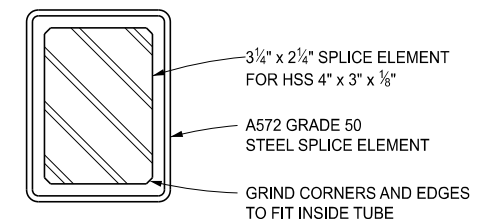
DETAIL A



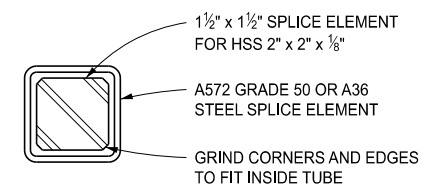
EMBEDDED ANCHOR STUD PLATES



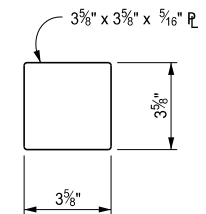
ANCHOR STUD DETAIL



SECTION G-G



SECTION H-H



POST COVER PLATE



DEPARTMENT DIRECTOR  
BRADLEY C. WIEFERICH, PE

STANDARD PLAN FOR  
BRIDGE RAILING, AESTHETIC PARAPET TUBE

(SPECIAL DETAIL)  
FHWA APPROVAL

09/09/2024  
PLAN DATE

B-25-L

SHEET  
5 OF 8



DEPARTMENT DIRECTOR  
BRADLEY C. WIEFERICH, PE

STANDARD PLAN FOR  
BRIDGE RAILING, AESTHETIC PARAPET TUBE

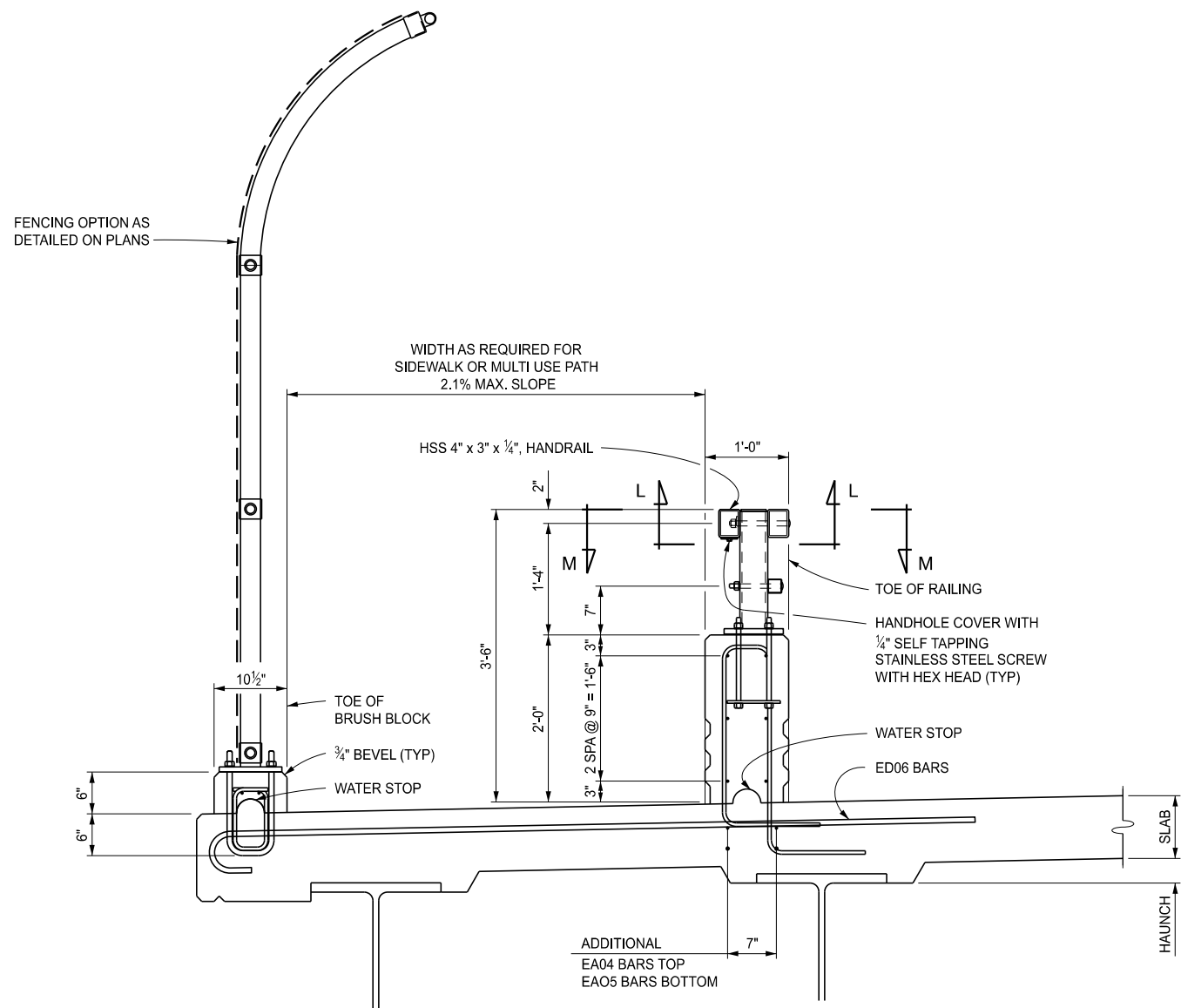
(SPECIAL DETAIL)  
FHWA APPROVAL

09/09/2024  
PLAN DATE


B-25-L

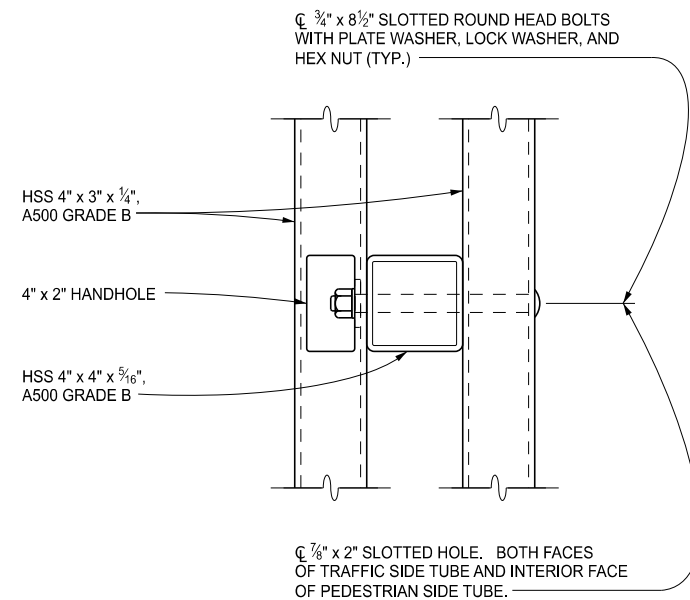
SHEET  
6 OF 8

SECT

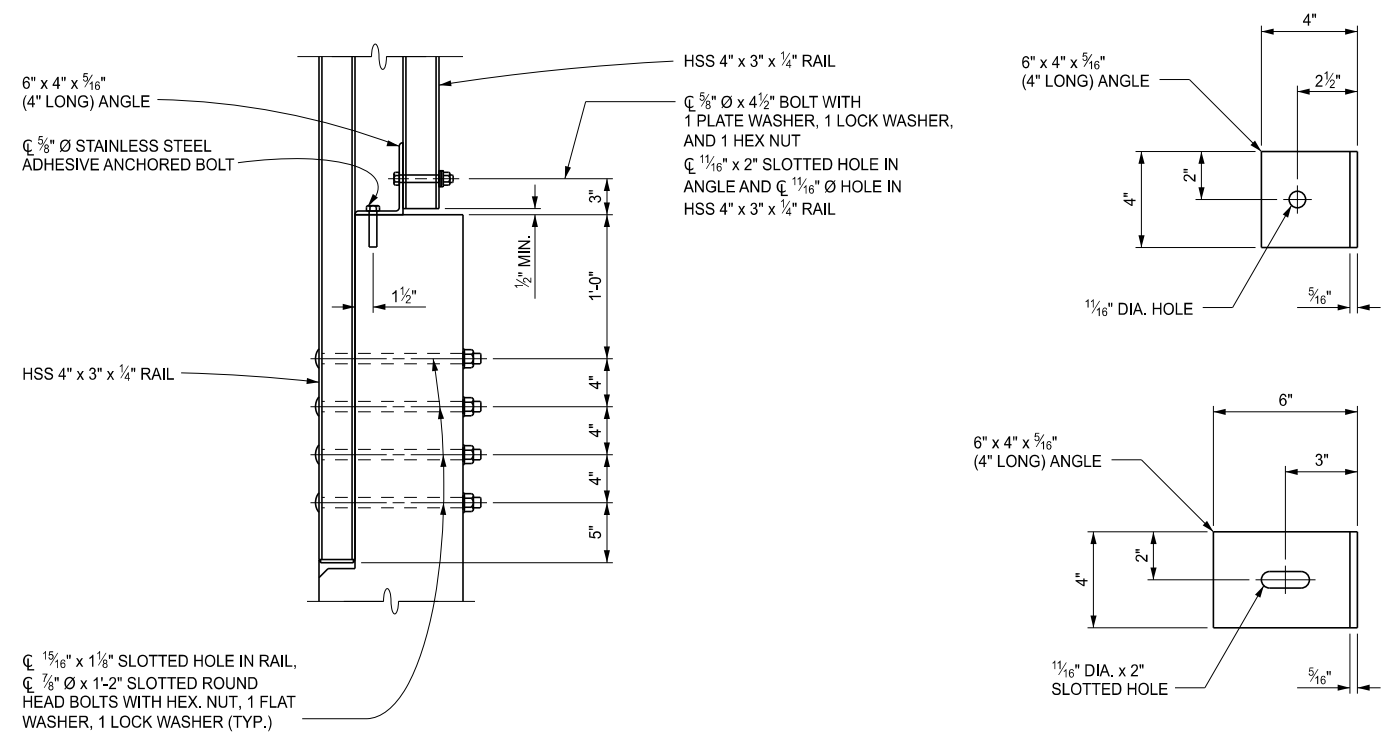


SECTION WITH PEDESTRIAN / MULTI USE PATH


|  |  |                         |               |                 |
|--|--|-------------------------|---------------|-----------------|
| <br>Michigan Department of Transportation | STANDARD PLAN FOR<br>BRIDGE RAILING, AESTHETIC PARAPET TUBE                              |                         |               |                 |
|  | DEPARTMENT DIRECTOR<br>BRADLEY C. WIEFERICH, PE<br><br>(SPECIAL DETAIL)<br>FHWA APPROVAL | 09/09/2024<br>PLAN DATE | <b>B-25-L</b> | SHEET<br>7 OF 8 |



SECTION L-L



SECTION M-M

|  |  |                         |               |                         |
|--|--|-------------------------|---------------|-------------------------|
| <br>Michigan Department of Transportation | STANDARD PLAN FOR<br>BRIDGE RAILING, AESTHETIC PARAPET TUBE                              |                         |               |                         |
|  | DEPARTMENT DIRECTOR<br>BRADLEY C. WIEFERICH, PE<br><br>(SPECIAL DETAIL)<br>FHWA APPROVAL | 09/09/2024<br>PLAN DATE | <b>B-25-L</b> | SHEET<br>8 OF 8<br>SECT |