

APPROVED BY: _____
DIRECTOR, BUREAU OF BRIDGES AND STRUCTURES

APPROVED BY: _____
DIRECTOR, BUREAU OF FIELD SERVICES

APPROVED BY: _____
DIRECTOR, BUREAU OF DEVELOPMENT



DEPARTMENT DIRECTOR
BRADLEY C. WIEFERICH, PE

STANDARD PLAN FOR
BRIDGE RAILING, 2 TUBE

(SPECIAL DETAIL)
FHWA APPROVAL

09/10/2024
PLAN DATE

B-21-K

SHEET
1 OF 4



DEPARTMENT DIRECTOR
BRADLEY C. WIEFERICH, PE

STANDARD PLAN FOR
BRIDGE RAILING, 2 TUBE

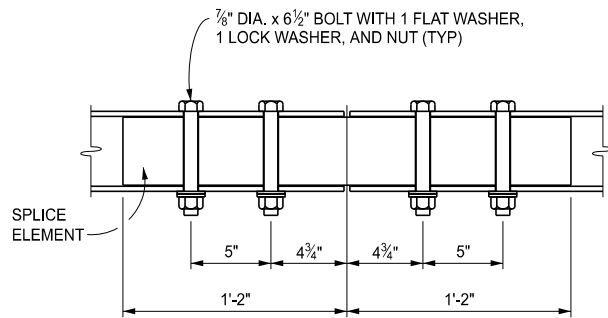
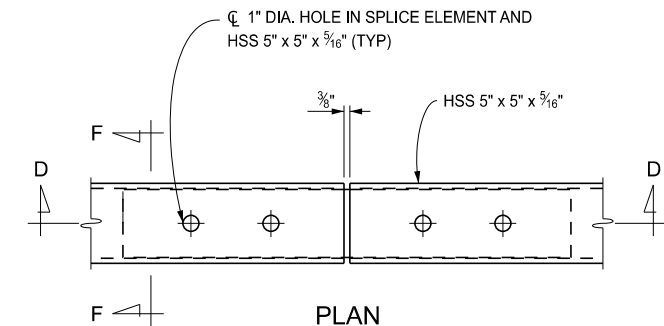
(SPECIAL DETAIL)
FHWA APPROVAL

09/10/2024
PLAN DATE

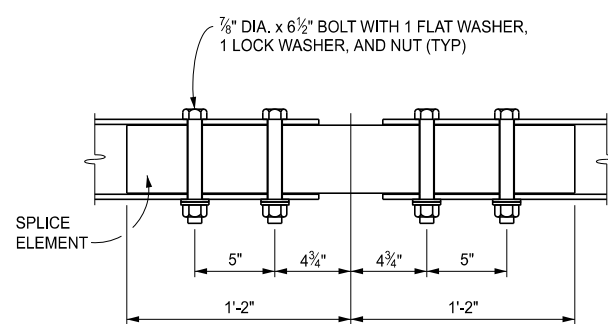
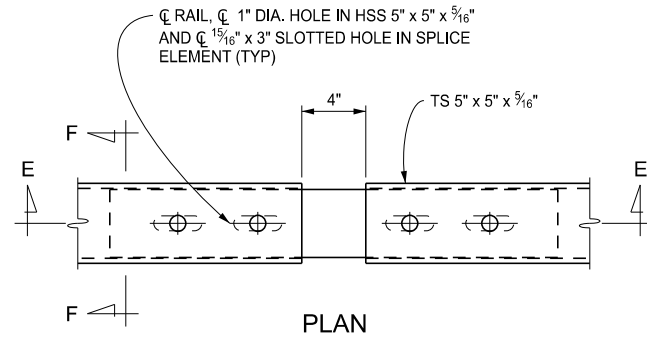
B-21-K

SHEET
2 OF 4

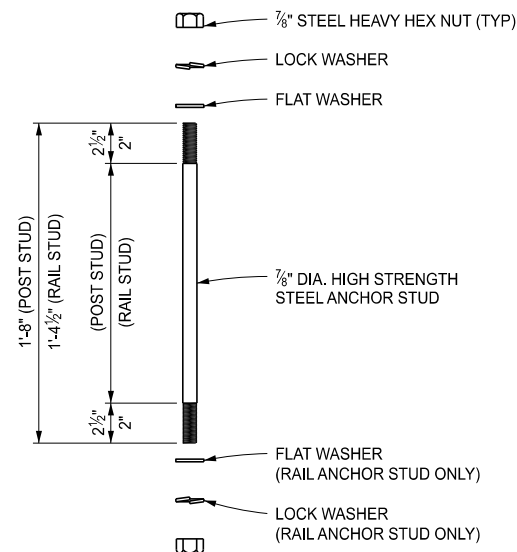
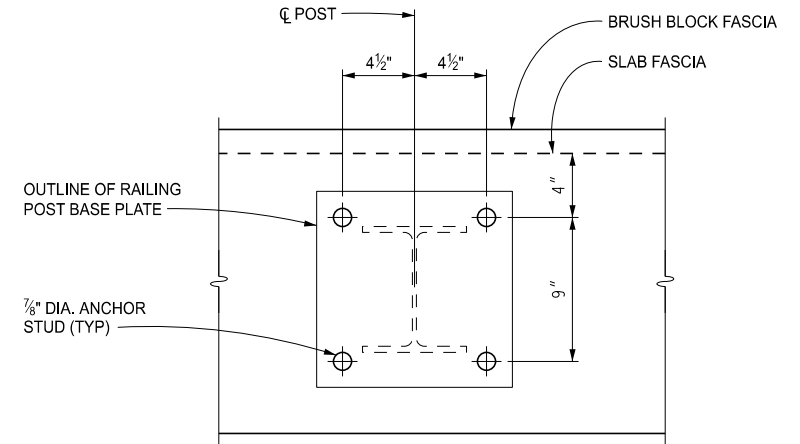
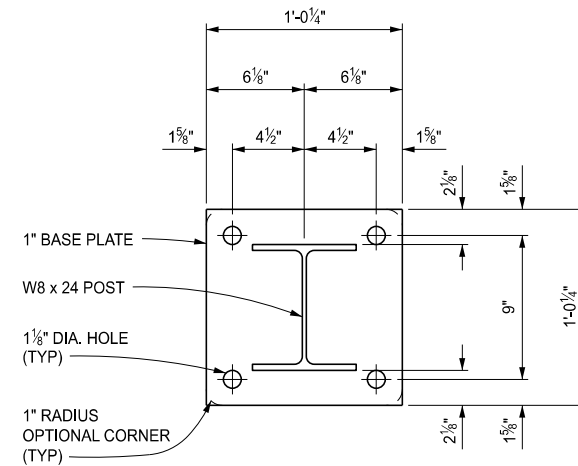
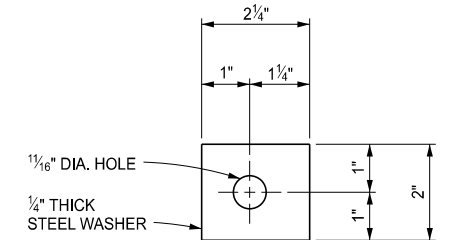
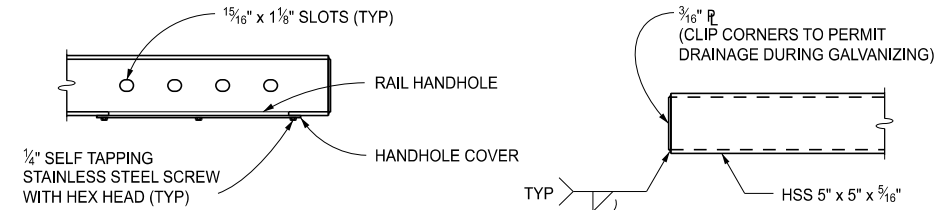
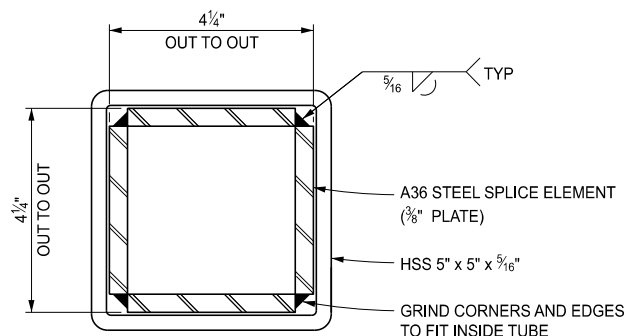
ECT



FIXED SPLICE DETAILS



EXPANSION SPLICE DETAILS



NOTES:

DETAILS SHOWN ARE IN ACCORDANCE WITH CURRENT AASHTO SPECIFICATIONS.

ALL WORK AND MATERIAL SHALL BE IN ACCORDANCE WITH THE STANDARD SPECIFICATIONS FOR CONSTRUCTION.

THIS RAILING SHALL BE USED ONLY WITH THE BRUSH BLOCK SHOWN ON THIS SHEET.

FOR LIGHT STANDARD ANCHOR BOLT ASSEMBLY DETAILS, SEE STANDARD PLAN B-103-SERIES.

FENCING MAY BE ATTACHED TO THE NON-TRAFFIC SIDE OF THE 2 TUBE RAILING TO PROTECT PEDESTRIANS



DEPARTMENT DIRECTOR
BRADLEY C. WIEFERICH, PE

STANDARD PLAN FOR
BRIDGE RAILING, 2 TUBE

(SPECIAL DETAIL)
FHWA APPROVAL

09/10/2024
PLAN DATE

B-21-K

SHEET
3 OF 4



DEPARTMENT DIRECTOR
BRADLEY C. WIEFERICH, PE

STANDARD PLAN FOR
BRIDGE RAILING, 2 TUBE

(SPECIAL DETAIL)
FHWA APPROVAL

09/10/2024
PLAN DATE

B-21-K

SHEET
4 OF 4

SECT