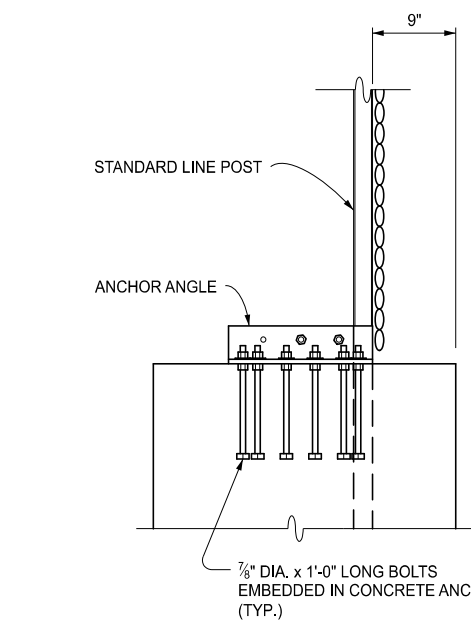
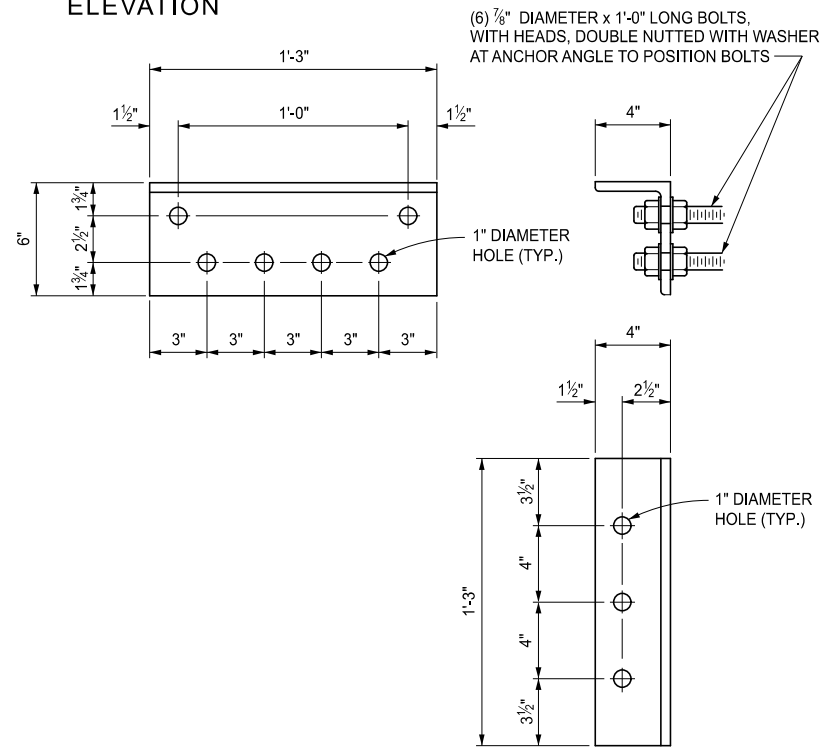


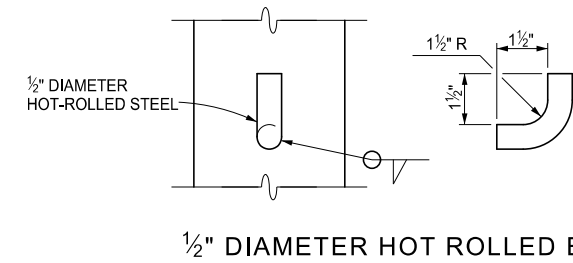
ELEVATION



END VIEW OF CONCRETE ANCHOR  
CONCRETE QUANTITY FOR ANCHOR = 0.5 CYD

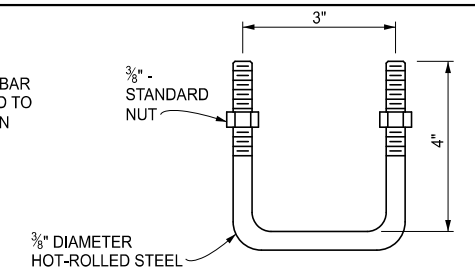


L6" x 4" x 1/2" x 1'-3" LONG ANCHOR ANGLE

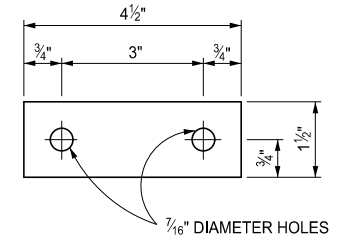


1/2" DIAMETER HOT ROLLED BAR

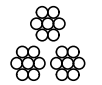
NOTE:  
THE WELDED 1/2" DIAMETER HOT-ROLLED BAR AND THE WIRE ROPE SHALL BE FASTENED TO THE LINE POSTS THAT ARE SPECIFIED ON STANDARD PLAN R-98-SERIES.



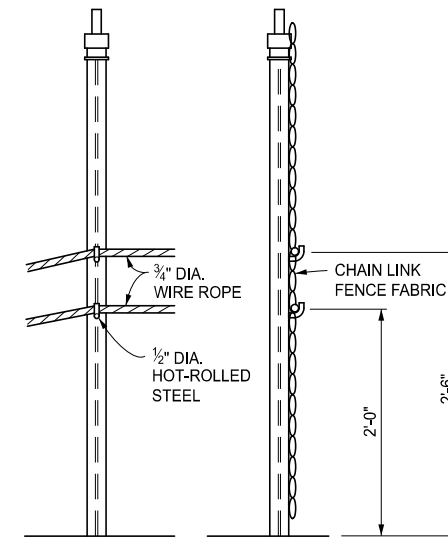
U-BOLT WITH NUTS



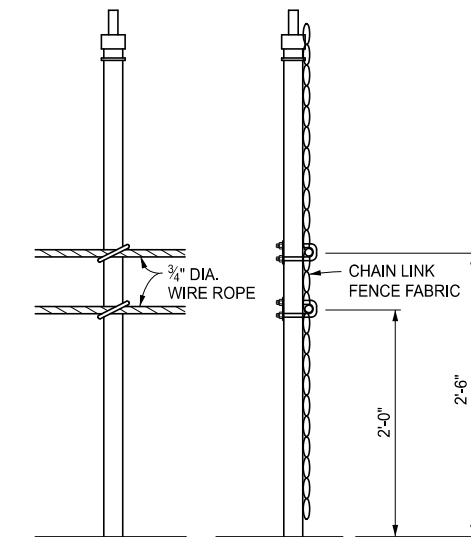
U-BOLT WASHER  
1/4" THICK HOT-ROLLED STEEL



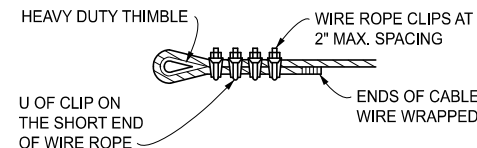
3/4" DIAMETER WIRE ROPE (3 x 7)



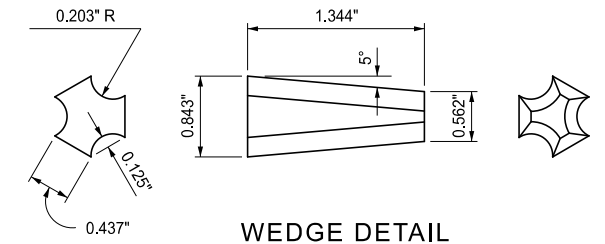
1st POST FROM ANCHOR



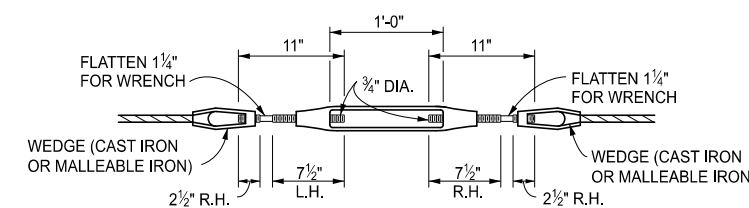
WIRE ROPE INSTALLED TO LINE POST WITH U-BOLTS



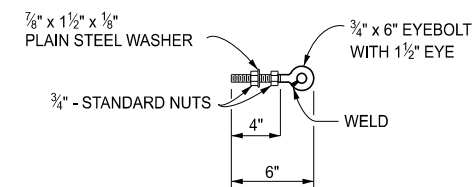
WIRE ROPE LOOP ENDING



WEDGE DETAIL



TURNBUCKLE WIRE ROPE ASSEMBLY



WELDED EYE-BOLT WITH NUTS & WASHER

NOTES:

CHAIN LINK FENCE WITH WIRE ROPE SHALL BE INSTALLED ACCORDING TO THIS PLAN AND STANDARD PLAN R-98-SERIES. THE WIRE ROPE SHALL BE ANCHORED ACCORDING TO THIS PLAN AND INSTALLED ON STANDARD FENCE POSTS FOR CHAIN LINK FENCE WITH CHAIN LINK FABRIC PLACED ON THE INSIDE OF WIRE ROPE. THE POST NEXT TO THE ANCHORAGE REQUIRES SPECIAL FABRICATION (SEE DETAIL). ALTERNATE DESIGNS MAY BE SUBMITTED TO THE ENGINEER FOR CONSIDERATION AND APPROVAL.

ALL POSTS, WIRE ROPES, AND FITTINGS SHALL BE GALVANIZED ACCORDING TO THE STANDARD SPECIFICATIONS FOR CONSTRUCTION.

ALL WELDING SHALL BE DONE ACCORDING TO THE STANDARD SPECIFICATIONS FOR CONSTRUCTION. TURNBUCKLES SHALL BE OF THE OPEN TYPE AND SHALL EACH PROVIDE A MINIMUM TAKEUP OF 1'-0".

ANCHORAGE SHALL BE PROVIDED ON EACH END OF CABLES WITH ONE TURNBUCKLE FOR EACH 500' RUN OF WIRE ROPE. MAXIMUM DISTANCE BETWEEN ANCHORAGES SHALL BE 1000'. WHEN PLACING WIRE ROPE IN EXISTING FENCE, THE CONCRETE ANCHORS MAY BE PLACED 2'-0" BEYOND THE 10'-0" TYPICAL POST SPACING, LEAVING THE EXISTING POST IN PLACE.

TENSION WIRE AND WIRE ROPES SHALL BE STRETCHED TAUT.

TOP AND BOTTOM SELVAGES OF FENCE FABRIC SHALL HAVE A KNUCKLED FINISH.

APPROVED BY: \_\_\_\_\_  
DIRECTOR, BUREAU OF FIELD SERVICES



DEPARTMENT DIRECTOR  
BRADLEY C. WIEFERICH, PE

APPROVED BY: \_\_\_\_\_  
DIRECTOR, BUREAU OF DEVELOPMENT

SPECIAL DETAIL FOR  
CHAIN LINK FENCE WITH WIRE ROPE

(SPECIAL DETAIL)  
FHWA APPROVAL

12/06/2022  
PLAN DATE

SPECIAL DETAIL 99

SHEET  
1 OF 2



DEPARTMENT DIRECTOR  
BRADLEY C. WIEFERICH, PE

SPECIAL DETAIL FOR  
CHAIN LINK FENCE WITH WIRE ROPE

(SPECIAL DETAIL)  
FHWA APPROVAL

12/06/2022  
PLAN DATE

SPECIAL DETAIL 99

SHEET  
2 OF 2

SECT