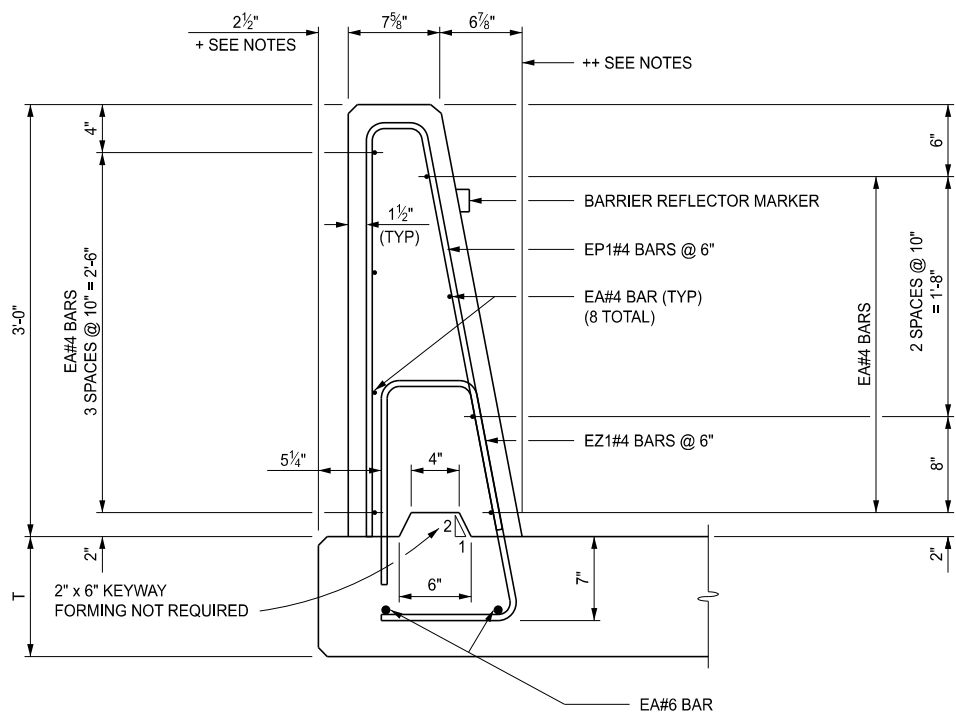


BRIDGE BARRIER RAILING, TYPE 7 OUTSIDE ELEVATION



SECTION A-A  
NO AESTHETIC TREATMENT

APPROVED BY: \_\_\_\_\_  
DIRECTOR, BUREAU OF BRIDGES AND STRUCTURES

APPROVED BY: \_\_\_\_\_  
DIRECTOR, BUREAU OF FIELD SERVICES

APPROVED BY: \_\_\_\_\_  
DIRECTOR, BUREAU OF DEVELOPMENT



DEPARTMENT DIRECTOR  
BRADLEY C. WIEFERICH, PE

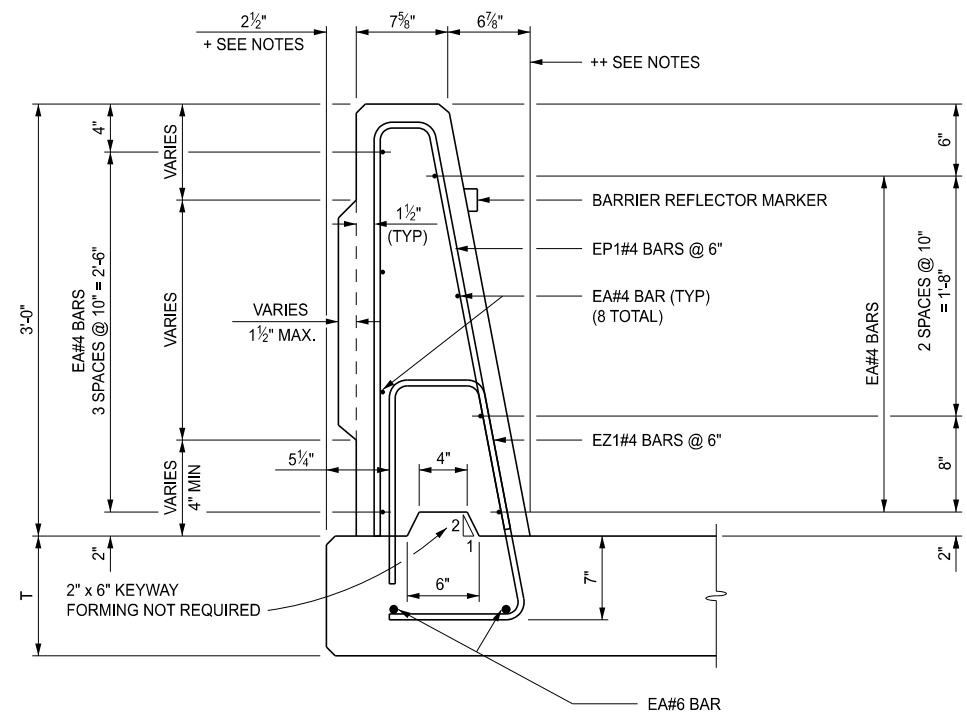
(SPECIAL DETAIL)  
FHWA APPROVAL

01/22/2024  
PLAN DATE

B-28-A

SHEET  
1 OF 7

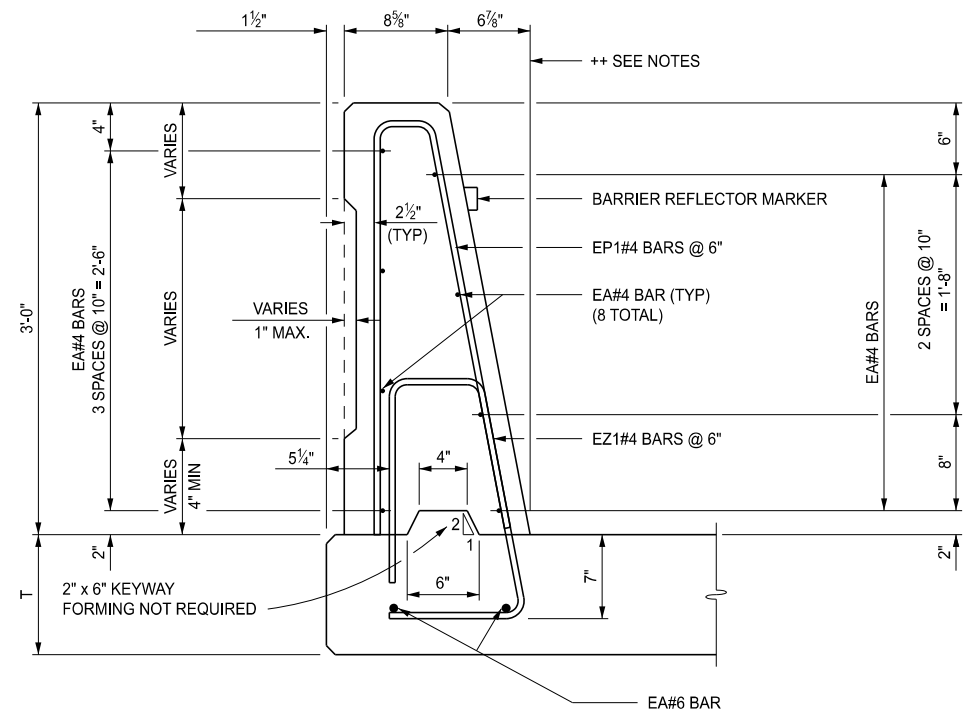
STANDARD PLAN FOR  
BRIDGE BARRIER RAILING, TYPE 7



SECTION A-A

BRIDGE BARRIER RAILING, AESTHETIC, TYPE 7, DET 1

( THE TYPE AND LIMITS OF THE AESTHETIC TREATMENT,  
IF APPLICABLE, ARE AS DETAILED ON THE PLANS. )



SECTION A-A

BRIDGE BARRIER RAILING, AESTHETIC, TYPE 7, DET 2

( THE TYPE AND LIMITS OF THE AESTHETIC TREATMENT,  
IF APPLICABLE, ARE AS DETAILED ON THE PLANS. )



DEPARTMENT DIRECTOR  
BRADLEY C. WIEFERICH, PE

(SPECIAL DETAIL)  
FHWA APPROVAL

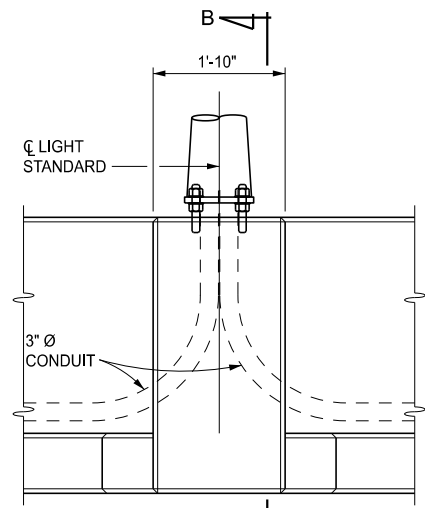
01/22/2024  
PLAN DATE

B-28-A

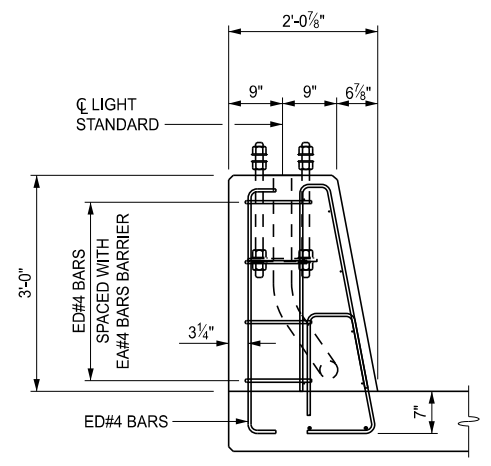
SHEET  
2 OF 7

STANDARD PLAN FOR  
BRIDGE BARRIER RAILING, TYPE 7

SECT

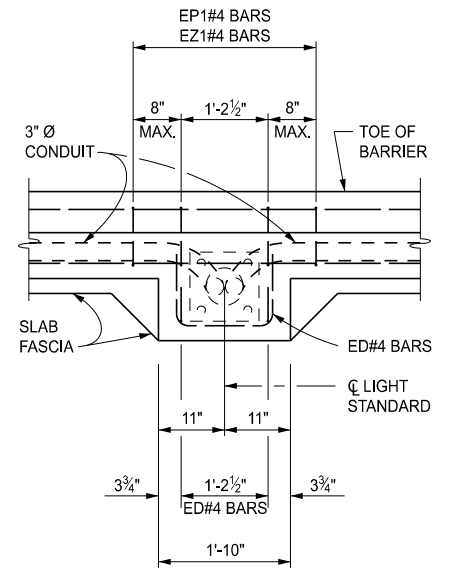


ELEVATION VIEW

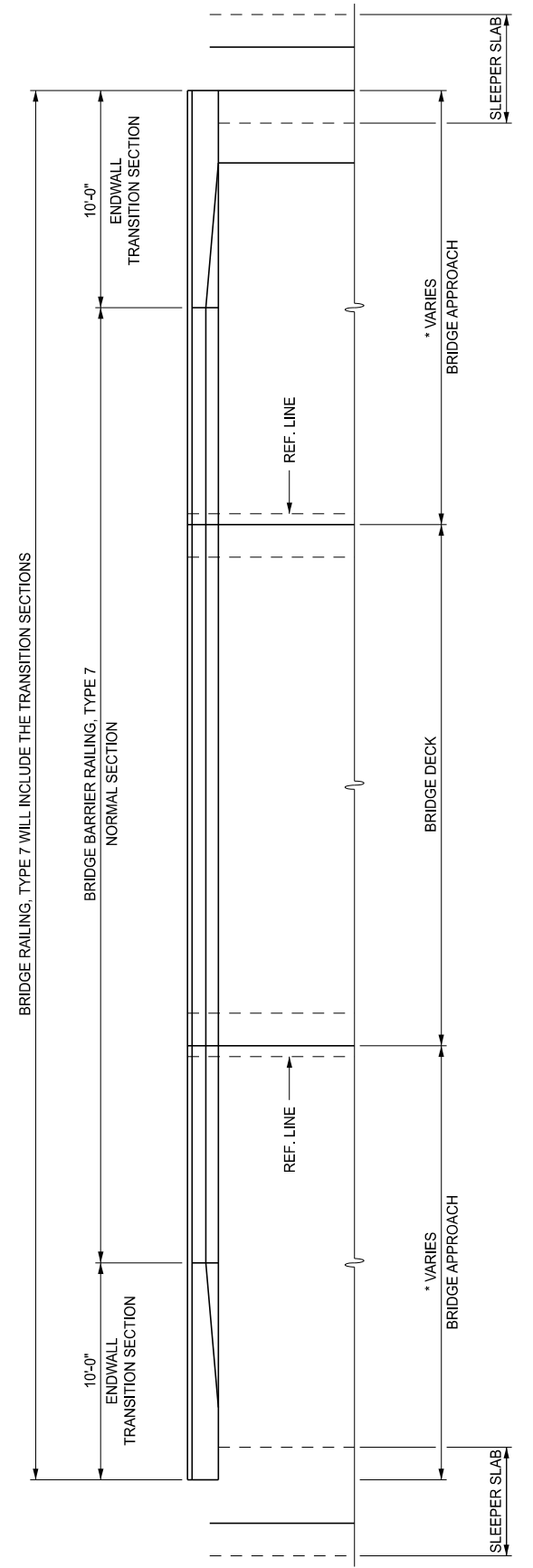


SECTION B-B  
LIGHT STANDARD DETAILS

NO AESTHETIC TREATMENT ON LIGHT STANDARD 1'-10" x 11 7/8" PROTRUSION



PLAN VIEW

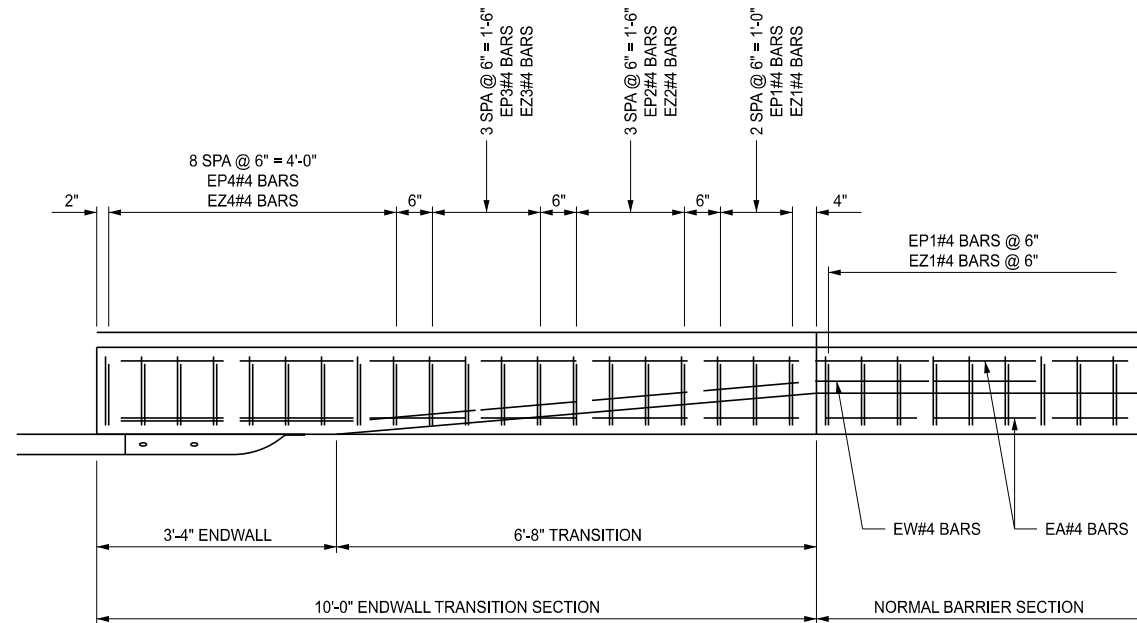


BRIDGE BARRIER RAILING, TYPE 7  
PLAN VIEW

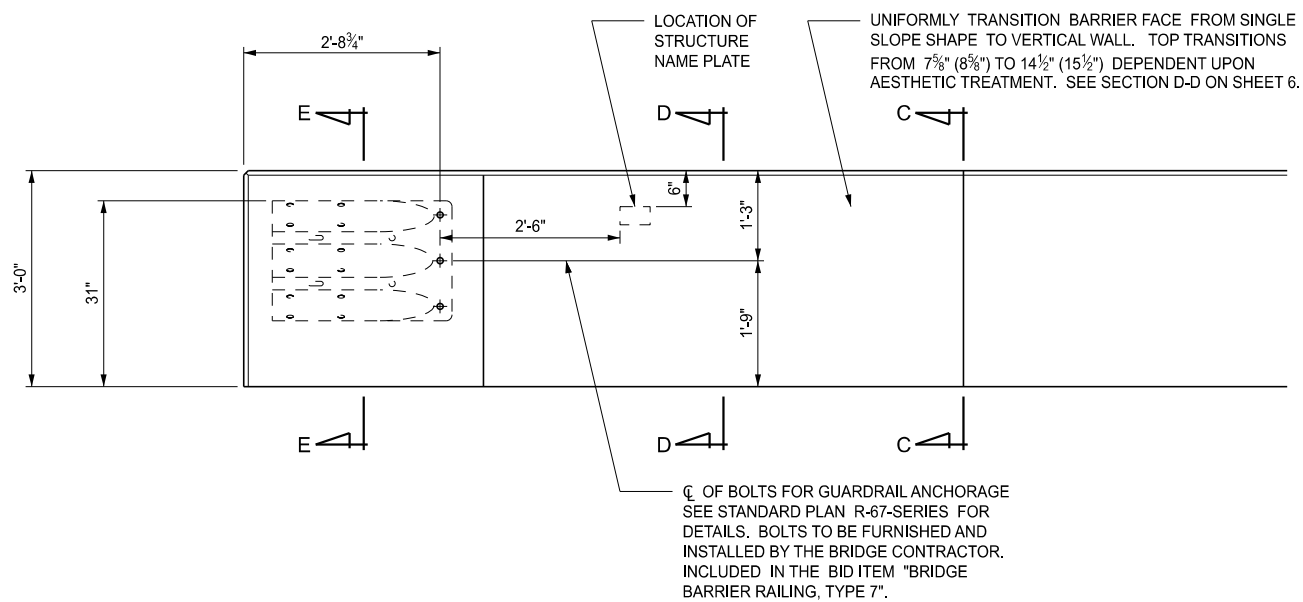
\* DEPENDANT UPON BRIDGE APPROACH LENGTH, THE TRANSITION SECTION CAN BE PARTLY ON BRIDGE DECK OR IF NO APPROACH SLAB IS PRESENT, ENTIRELY ON THE BRIDGE DECK.

	STANDARD PLAN FOR BRIDGE BARRIER RAILING, TYPE 7			SHEET 3 OF 7
	(SPECIAL DETAIL) FHWA APPROVAL	01/22/2024 PLAN DATE	B-28-A	

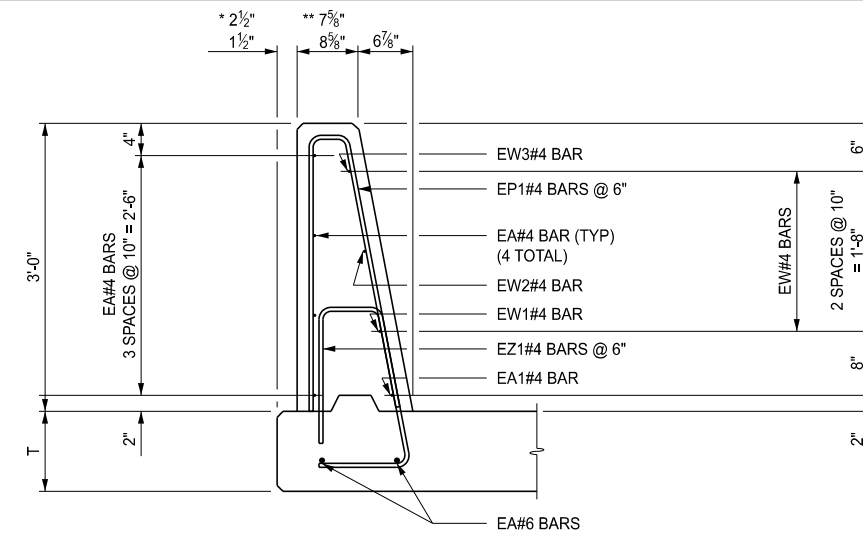
	STANDARD PLAN FOR BRIDGE BARRIER RAILING, TYPE 7			SHEET 4 OF 7 SECT
	(SPECIAL DETAIL) FHWA APPROVAL	01/22/2024 PLAN DATE	B-28-A	



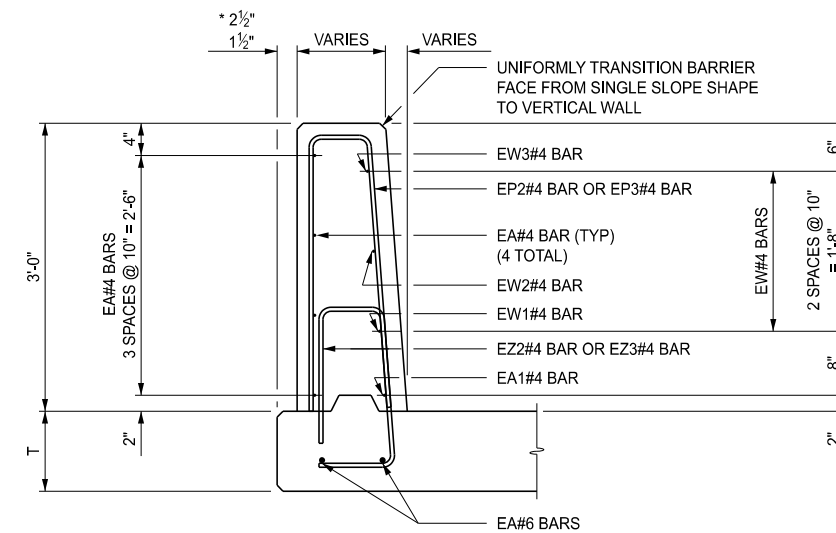
PLAN VIEW



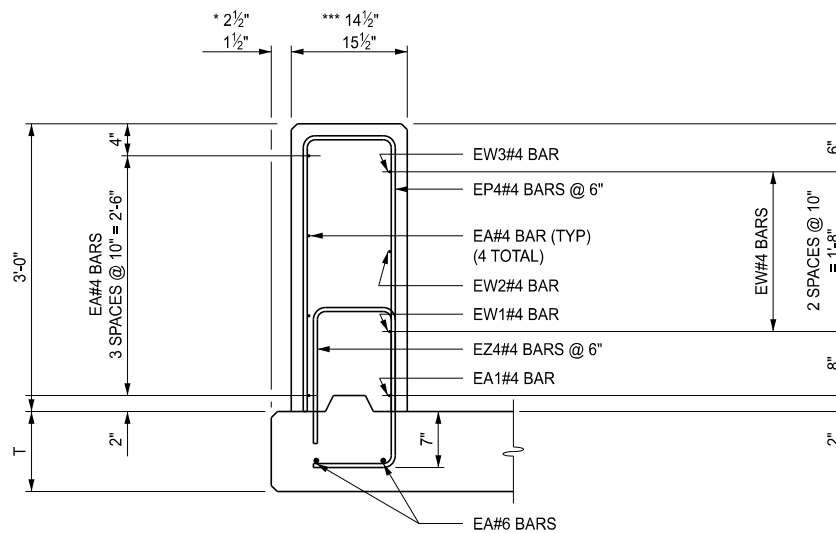
ELEVATION VIEW



SECTION C-C



SECTION D-D



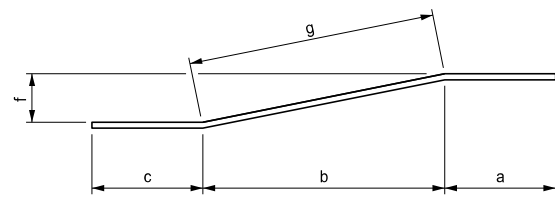
SECTION E-E

- \* 2 1/2" BRIDGE BARRIER RAILING, TYPE 7 (+ SEE NOTES)
- 2 1/2" BRIDGE BARRIER RAILING, AESTHETIC, TYPE 7, DET 1 (+ SEE NOTES)
- 1 1/2" BRIDGE BARRIER RAILING, AESTHETIC, TYPE 7, DET 2
- \*\* 7 5/8" BRIDGE BARRIER RAILING, TYPE 7 (+ SEE NOTES)
- 7 5/8" BRIDGE BARRIER RAILING, AESTHETIC, TYPE 7, DET 1 (+ SEE NOTES)
- 8 5/8" BRIDGE BARRIER RAILING, AESTHETIC, TYPE 7, DET 2
- \*\*\* 14 1/2" BRIDGE BARRIER RAILING, TYPE 7 (+ SEE NOTES)
- 14 1/2" BRIDGE BARRIER RAILING, AESTHETIC, TYPE 7, DET 1 (+ SEE NOTES)
- 15 1/2" BRIDGE BARRIER RAILING, AESTHETIC, TYPE 7, DET 2

<p>MDOT Michigan Department of Transportation</p> <p>DEPARTMENT DIRECTOR BRADLEY C. WIEFERICH, PE</p>	STANDARD PLAN FOR BRIDGE BARRIER RAILING, TYPE 7			SHEET 5 OF 7
	(SPECIAL DETAIL) FHWA APPROVAL	01/22/2024 PLAN DATE	B-28-A	

<p>MDOT Michigan Department of Transportation</p> <p>DEPARTMENT DIRECTOR BRADLEY C. WIEFERICH, PE</p>	STANDARD PLAN FOR BRIDGE BARRIER RAILING, TYPE 7			SHEET 6 OF 7
	(SPECIAL DETAIL) FHWA APPROVAL	01/22/2024 PLAN DATE	B-28-A	

SECT

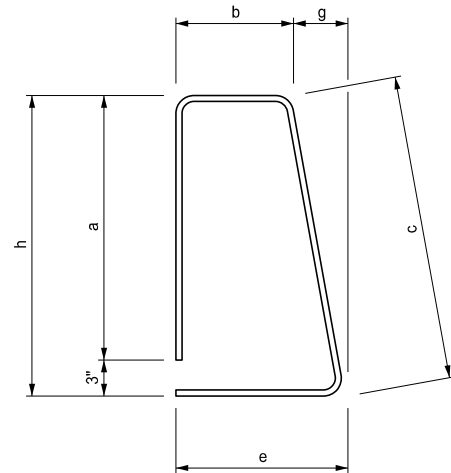


ENDWALL TRANSITION SECTION BARS							
	# of bars	c	b	a	g	j	
EA1	1	--	--	11'-11"	--	--	EA041111
EW1	1	3'-0"	5'-6"	3'-5"	5'-6"	1 7/8"	EW041111
EW2	1	3'-0"	5'-6"	3'-5 7/8"	5'-6 1/8"	3 7/8"	EW041200
EW3	1	3'-0"	5'-6"	3'-6 3/4"	5'-6 1/4"	5 3/4"	EW041201

$$L = c + a + g$$

BARRIER SECTION BARS									
	# of bars	a	b	c	e	g	h	h - a	
EZ1	--	1'-5"	7 3/8"	1'-8 3/8"	11 1/4"	3 5/8"	1'-8"	3"	EZ040408

$$L = a + b + c + e$$

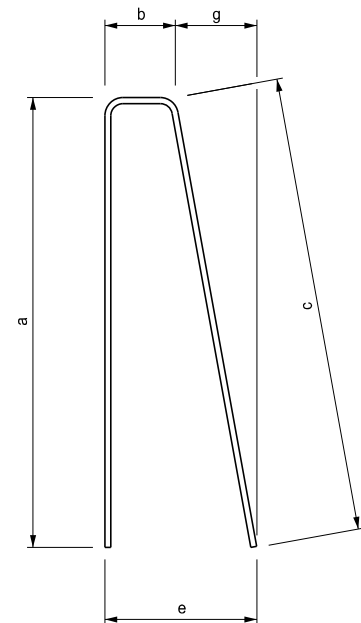


ENDWALL TRANSITION SECTION BARS									
	# of bars	a	b	c	e	g	h	h - a	
EZ1	3	1'-5"	7 3/8"	1'-8 3/8"	11 1/4"	3 5/8"	1'-8"	3"	EZ040408
EZ2	4	1'-5"	7 7/8"	1'-8 1/4"	10 7/8"	2 7/8"	1'-8"	3"	EZ040408
EZ3	4	1'-5"	8 3/4"	1'-8"	10 1/4"	1 1/2"	1'-8"	3"	EZ040408
EZ4	9	1'-5"	10 1/2"	1'-8"	10 1/2"	--	1'-8"	3"	EZ040410

$$L = a + b + c + e$$

BARRIER SECTION BARS							
	# of bars	a	b	c	e	g	
EP1	--	2'-10 1/4"	4 3/4"	2'-11"	11"	6 1/4"	EP040602

$$L = a + b + c$$



ENDWALL TRANSITION SECTION BARS							
	# of bars	a	b	c	e	g	
EP1	3	2'-10 1/4"	4 3/4"	2'-11"	11"	6 1/4"	EP040602
EP2	4	2'-9 7/8"	6 1/4"	2'-10 7/8"	11"	4 3/4"	EP040603
EP3	4	2'-10 1/8"	8 1/4"	2'-10 5/8"	11"	2 3/4"	EP040605
EP4	9	2'-10 1/2"	11"	2'-10 1/2"	11"	--	EP040608

$$L = a + b + c$$

NOTES:

DETAILS SHOWN ARE IN ACCORDANCE WITH CURRENT AASHTO SPECIFICATIONS.

FOR LIGHT STANDARD ANCHOR BOLT ASSEMBLY DETAILS, SEE STANDARD PLAN B-103-SERIES.

ALL WORK AND MATERIAL SHALL BE IN ACCORDANCE WITH THE STANDARD SPECIFICATIONS.

+ BACK OF BARRIER TO SLAB FASCIA MAY BE DECREASED TO 1 1/2" (FROM 2 1/2") AND TOE OF BARRIER SHIFTED ACCORDINGLY TO ACCOMMODATE THE NEED FOR INCREASED OR MAINTAINING SHOULDER WIDTHS. DISTANCE TO BE DETAILED ON THE PLANS.

++ BRIDGE BARRIER ORIENTATION :

PERPENDICULAR TO PLANE OF SLAB ON NORMAL CROWN SECTION AND HIGH SIDE OF SUPERELEVATION SECTION.  
VERTICAL ON LOW SIDE OF SUPERELEVATED SECTION.



DEPARTMENT DIRECTOR  
BRADLEY C. WIEFERICH, PE

(SPECIAL DETAIL)  
FHWA APPROVAL

01/22/2024  
PLAN DATE

B-28-A

SHEET  
7 OF 7