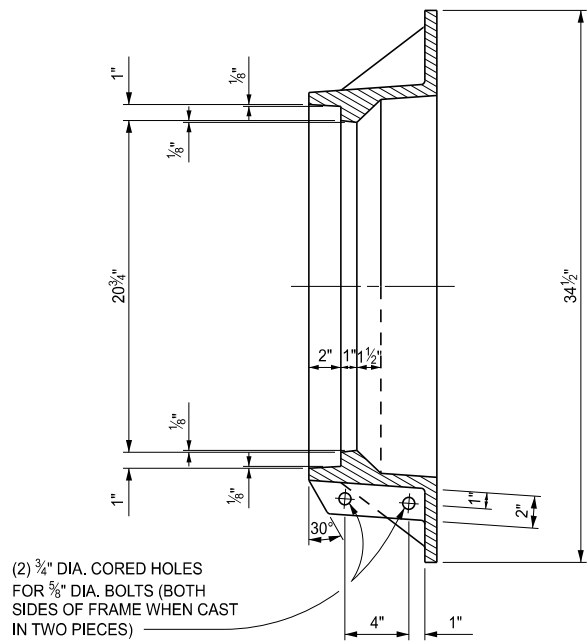
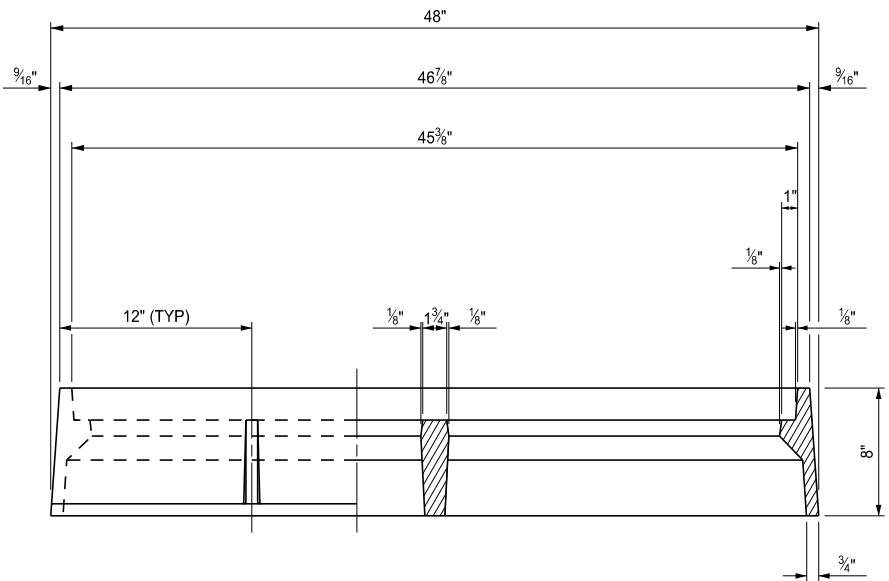


PLAN OF FRAME

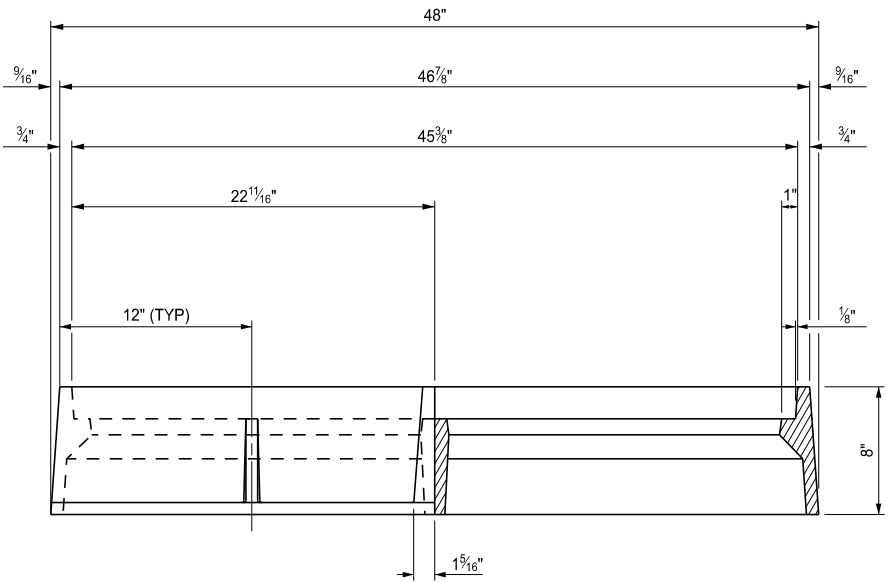


SECTION A - A

NOTE:  
FRAME MAY BE CAST MONOLITHICALLY OR  
IN TWO PIECES AS SHOWN. ENSURE FRAMES  
CAST IN TWO PIECES ARE TIGHTLY BOLTED  
TOGETHER WHEN DELIVERED.



SECTION B1 - B1  
(CAST MONOLITHICALLY)



SECTION B2 - B2  
(CAST IN TWO PIECES)

APPROVED BY: \_\_\_\_\_  
DIRECTOR, BUREAU OF FIELD SERVICES

APPROVED BY: \_\_\_\_\_  
DIRECTOR, BUREAU OF DEVELOPMENT



DEPARTMENT DIRECTOR  
BRADLEY C. WIEFERICH, PE

STANDARD PLAN FOR  
COVER V

SPECIAL DETAIL  
FHWA APPROVAL

04/14/2025  
PLAN DATE

R-22-G

SHEET  
1 OF 4



DEPARTMENT DIRECTOR  
BRADLEY C. WIEFERICH, PE

STANDARD PLAN FOR  
COVER V

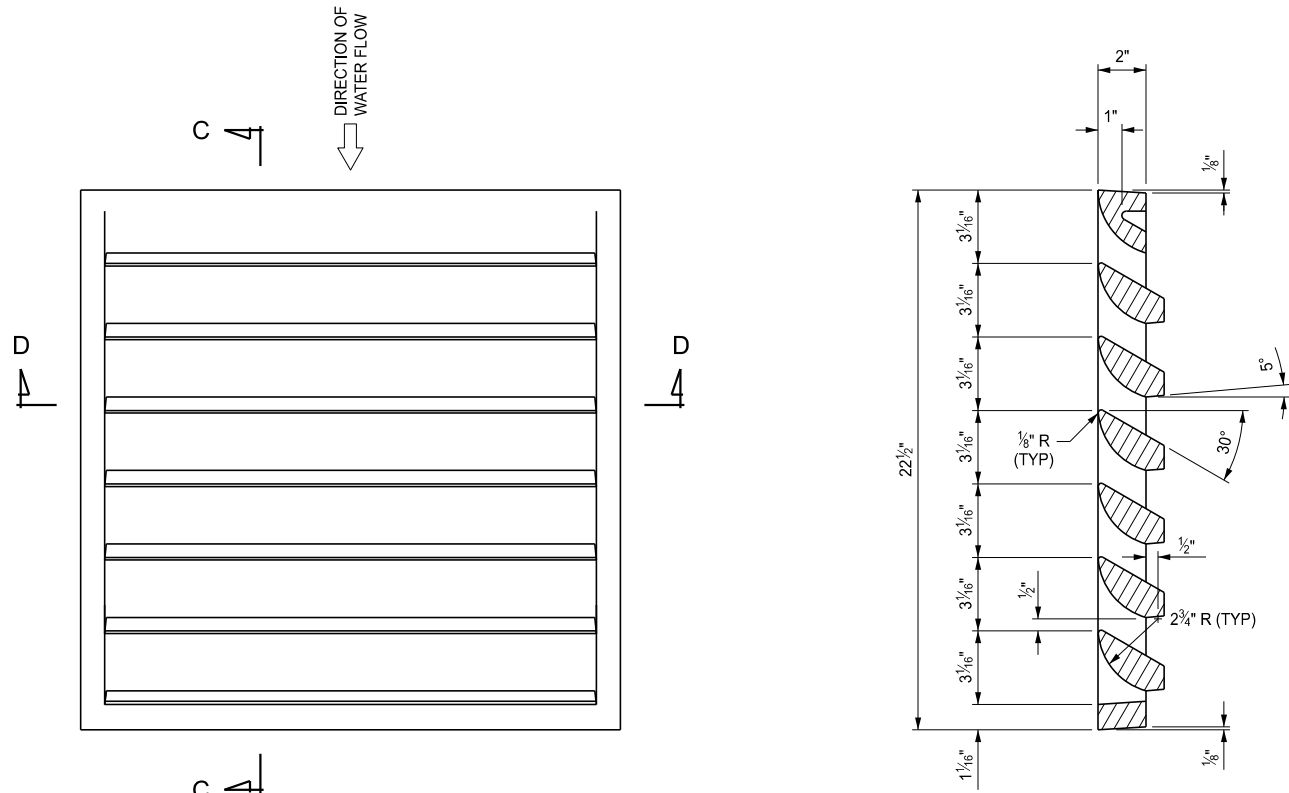
SPECIAL DETAIL  
FHWA APPROVAL

04/14/2025  
PLAN DATE

R-22-G

SHEET  
2 OF 4

SECT




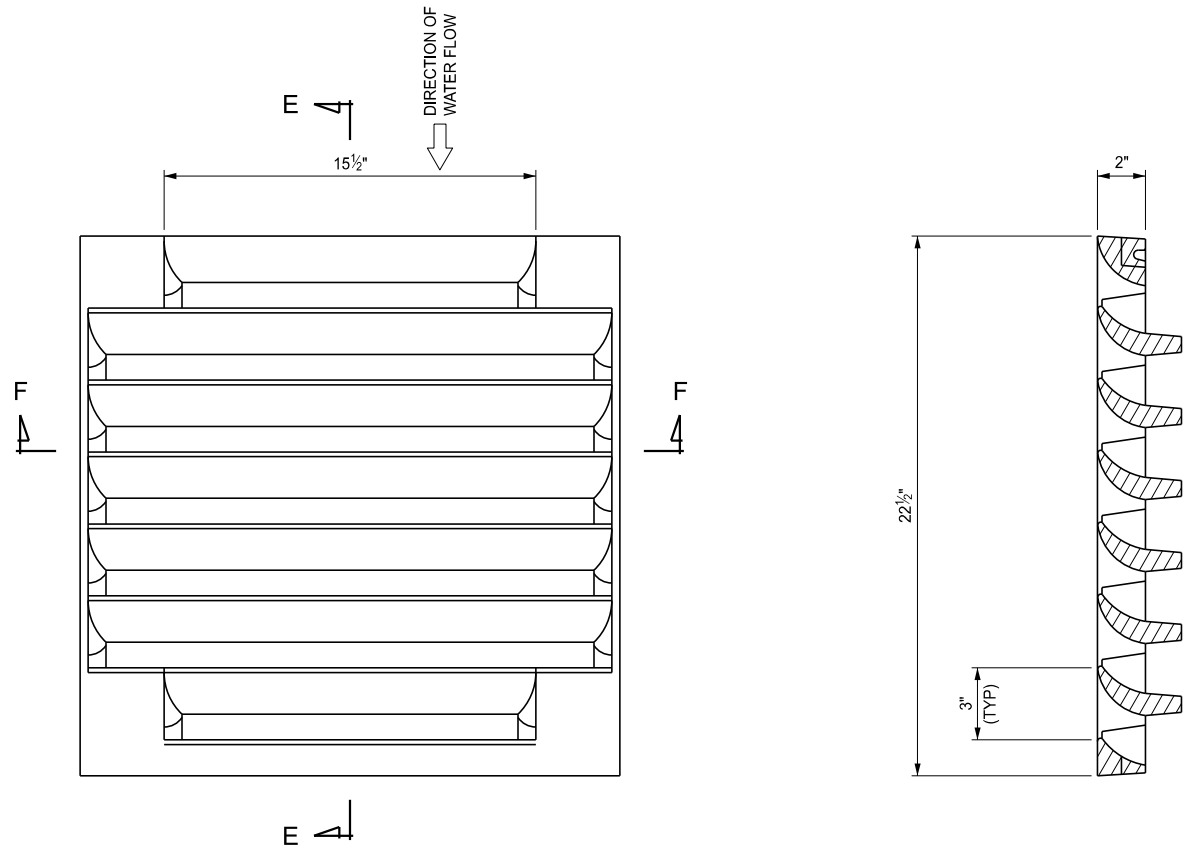
PLAN OF GRATE

SECTION C - C

SECTION D - D

GRAY IRON CASTING

 Michigan Department of Transportation	STANDARD PLAN FOR COVER V			
	(SPECIAL DETAIL) FHWA APPROVAL	04/14/2025 PLAN DATE	R-22-G	SHEET 3 OF 4




PLAN OF GRATE

SECTION E - E

SECTION F - F

DUCTILE IRON CASTING

- NOTES:
- ENSURE THE CASTINGS MEET THE REQUIREMENTS OF THE STANDARD SPECIFICATIONS FOR CONSTRUCTION FOR GRAY IRON OR DUCTILE IRON CASTINGS.
  - CLEAN ALL CASTINGS BY CURRENT APPROVED BLASTING METHODS.
  - ENSURE CASTINGS ARE FREE OF POURING FAULTS, BLOW HOLES, CRACKS, AND OTHER IMPERFECTIONS. ENSURE CASTINGS ARE SOUND, TRUE TO FORM AND THICKNESS, CLEAN AND NEATLY FINISHED, AND COATED WITH COAL TAR PITCH VARNISH.
  - GRIND OR MACHINE THE SEATING FACE OF GRATE AND THE SEAT FOR THE SAME ON THE FRAME SO THAT THE GRATE WILL HAVE AN EVEN BEARING ON ITS SEAT TO PREVENT ROCKING OR TILTING.
  - THIS COVER IS DESIGNED TO FIT ON ANY INLET, CATCH BASIN, OR ON ANY EXISTING SIMILAR STRUCTURE WHEN SO DESIGNATED ON THE PLANS.
  - GRATE MAY BE PROVIDED WITH BOLTING CAPABILITY. PROVIDE (4) COUNTER BORED HOLES, ONE AT EACH CORNER OF THE GRATE AND A FRAME WITH (4) THREADED HOLES TO SUFFICIENTLY RECEIVE GRATE BOLTS. ENSURE HOLE DIAMETERS AND BOLTS CONFORM TO THE MANUFACTURER'S DETAILS AND SPECIFICATIONS.

 Michigan Department of Transportation	STANDARD PLAN FOR COVER V			
	(SPECIAL DETAIL) FHWA APPROVAL	04/14/2025 PLAN DATE	R-22-G	SHEET 4 OF 4