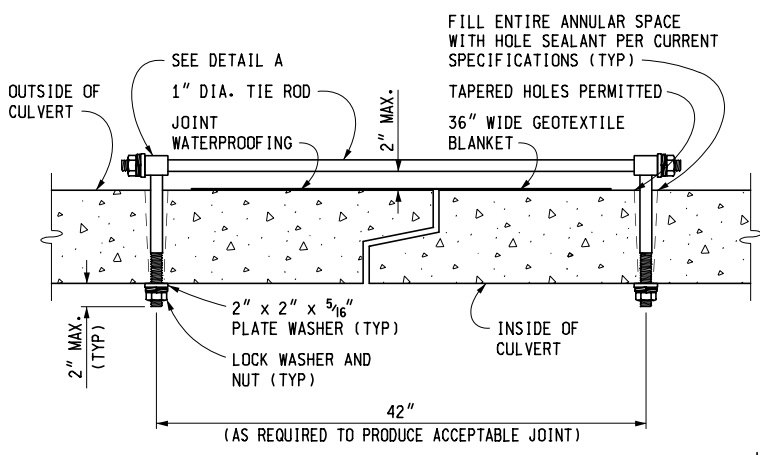
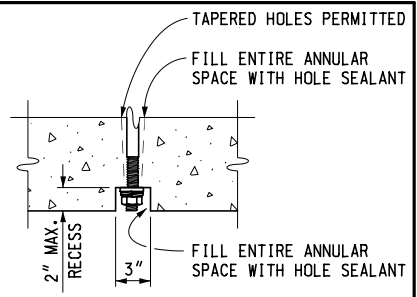


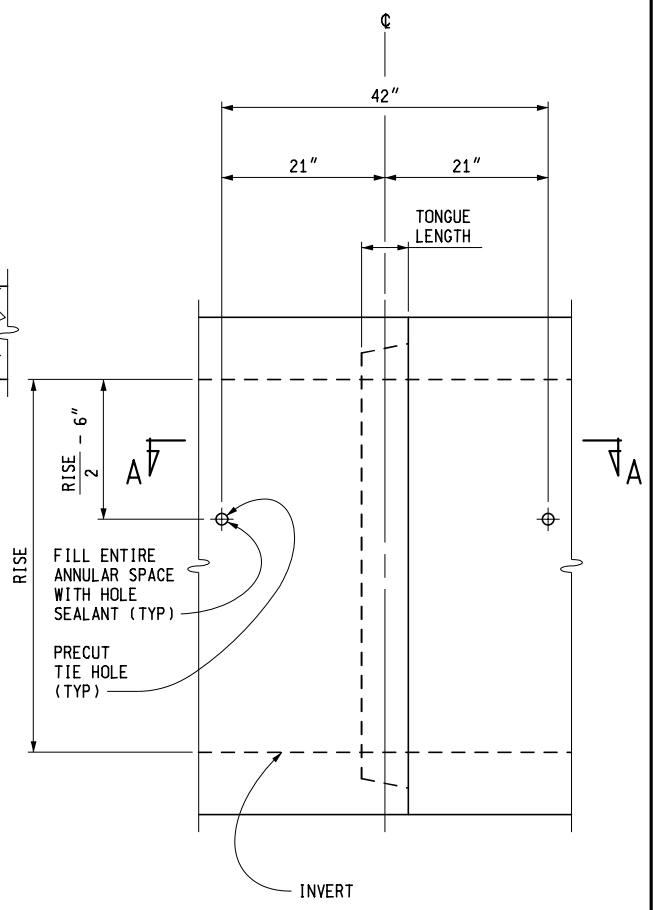
SECTION A-A
SINGLE CONNECTION TIE



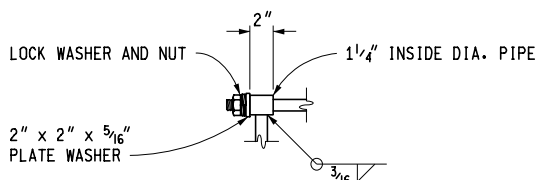
SECTION A-A
DOUBLE CONNECTION TIE



OPTIONAL RECESS DETAIL



BOX CULVERT
TIE HOLE LOCATION



DETAIL A

NOTES:
JOINT TIE ASSEMBLIES ARE LOCATED ON THE SIDES OF CULVERTS ONLY.
JOINT TIE ASSEMBLIES TO BE USED TO ONLY HOLD CULVERT SECTIONS TOGETHER, NOT FOR PULLING SECTIONS TIGHT.

MDOT
Michigan Department of Transportation

PREPARED BY
DESIGN DIVISION

DRAWN BY: B.L.T.

CHECKED BY: W.K.P.

DEPARTMENT DIRECTOR
Paul C. Ajegba

APPROVED BY: Gregg Brunner, P.E. Gregg Brunner
Jul 24 2019 11:24 AM
DIRECTOR, BUREAU OF FIELD SERVICES

APPROVED BY: Bradley C. Wieferich Bradley C. Wieferich
Jul 3 2019 9:04 AM
DIRECTOR, BUREAU OF DEVELOPMENT

MICHIGAN DEPARTMENT OF TRANSPORTATION
BUREAU OF DEVELOPMENT STANDARD PLAN FOR

**BOX CULVERT
JOINT TIE ASSEMBLIES**

5-18-2020 F.H.W.A. APPROVAL	6-20-2019 PLAN DATE	R-84-A	SHEET 1 OF 1
--------------------------------	------------------------	---------------	-----------------