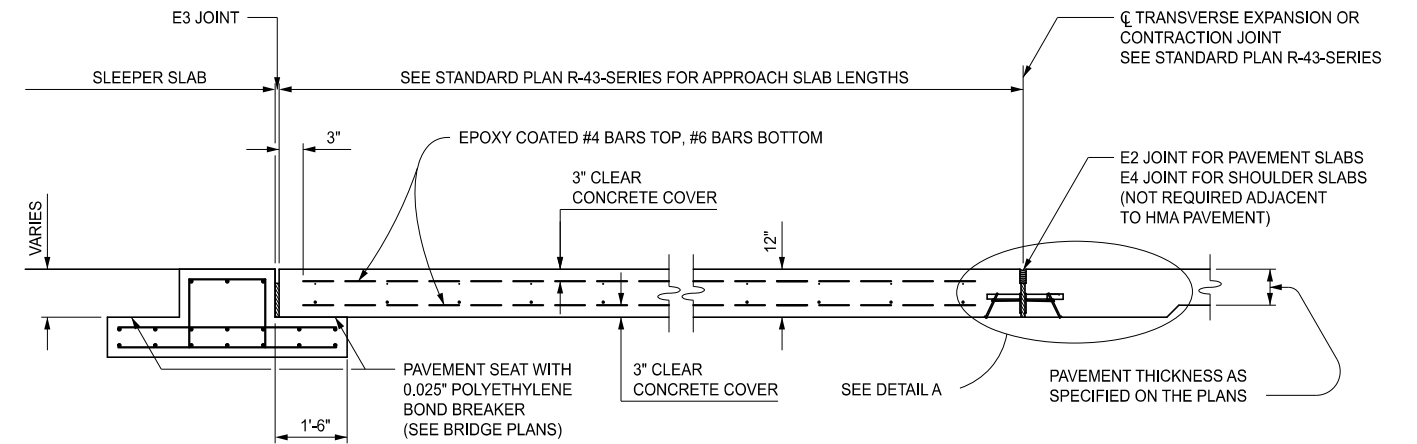
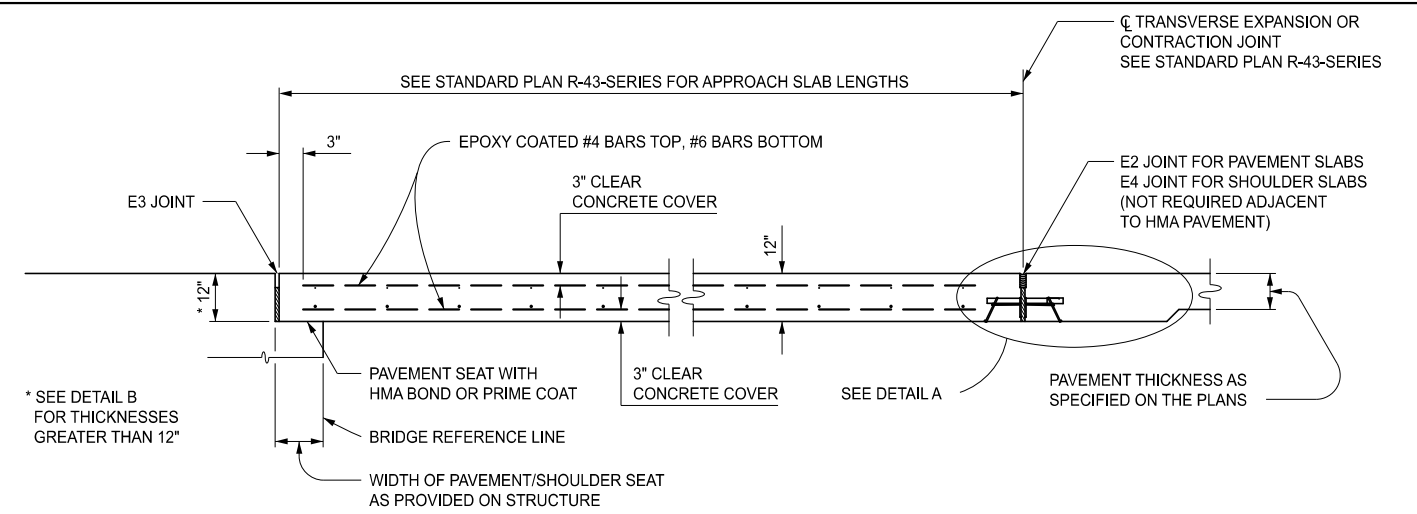


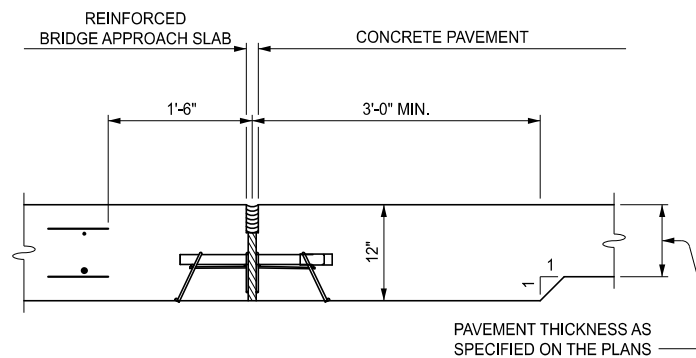
SKewed BRIDGES WHERE SLAB IS SQUARED OFF WILL REQUIRE TRANSVERSE REINFORCEMENT TO BE FANNED IN OR THE USE OF CUT BARS WILL BE REQUIRED. MAINTAIN REINFORCEMENT SPACING AT ACUTE CORNER AND FAN IN AT OBTUSE CORNER.

REINFORCEMENT DETAIL

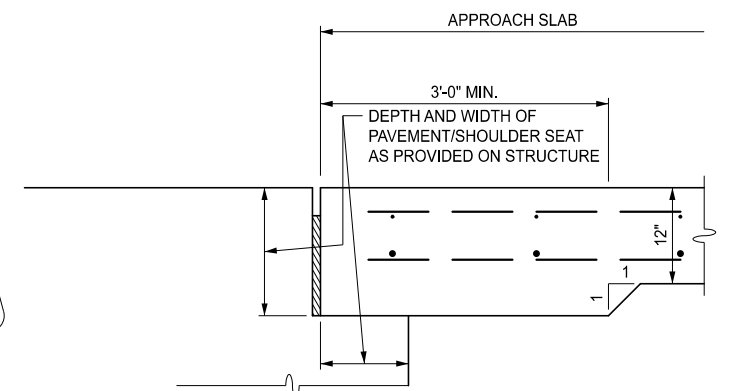
STEEL REINFORCEMENT		
LONGITUDINAL REINFORCEMENT		
PAVEMENT/SHOULDER SLAB WIDTH	TOP REINFORCEMENT #4 BARS AT 1'-6" MAX.	BOTTOM REINFORCEMENT #6 BARS AT 6" (±)
	NUMBER OF BARS (MIN.)	NUMBER OF BARS (MIN.)
10'-0"	7	19
11'-0"	8	21
12'-0"	9	23
14'-0"	10	27
3'-0"	3	5
4'-0"	3	7
5'-0"	4	9
7'-0"	5	13
9'-0"	7	17
TRANSVERSE REINFORCEMENT		
	TOP REINFORCEMENT #4 BARS AT 1'-6" MAX.	BOTTOM REINFORCEMENT #6 BARS AT 1'-6" MAX.



PAVEMENT AND SHOULDER SLABS ADJACENT TO STRUCTURES



DETAIL A
ADJACENT TO CONCRETE PAVEMENT



DETAIL B
USE WHEN DEPTH OF PAVEMENT/
SHOULDER SEAT IS GREATER THAN 12"

NOTES:

SEE STANDARD PLANS R-39-SERIES AND R-40-SERIES FOR DETAILS OF JOINTS AND LOAD TRANSFER ASSEMBLIES.

APPROVED BY: _____
DIRECTOR, BUREAU OF FIELD SERVICES



STANDARD PLAN FOR
PAVEMENT REINFORCEMENT FOR BRIDGE APPROACH

APPROVED BY: _____
DIRECTOR, BUREAU OF DEVELOPMENT

DEPARTMENT DIRECTOR
BRADLEY C. WIEFERICH, PE

(SPECIAL DETAIL)
FHWA APPROVAL

01/04/2022
PLAN DATE

R-45-K

SHEET
1 OF 2



STANDARD PLAN FOR
PAVEMENT REINFORCEMENT FOR BRIDGE APPROACH

DEPARTMENT DIRECTOR
BRADLEY C. WIEFERICH, PE

(SPECIAL DETAIL)
FHWA APPROVAL

01/04/2022
PLAN DATE

R-45-K

SHEET
2 OF 2

SECT