

PLAN OF WIRE ROPE BARRIER DETAIL

POST SPACING TABLE	
RADIUS OF CURVE	POST SPACING
LESS THAN 110'	USE NOT RECOMMENDED
110' TO 219'	6'
220' TO 699'	12'
700' OR MORE AND TANGENT SECTIONS	16'



PREPARED BY
DESIGN DIVISION

DRAWN BY: B.L.T.

CHECKED BY: W.K.P.

DEPARTMENT DIRECTOR
Kirk T. Steudle

APPROVED BY: John C. Friend
ENGINEER OF DELIVERY

APPROVED BY: John P. Podes
ENGINEER OF DEVELOPMENT

MICHIGAN DEPARTMENT OF TRANSPORTATION
BUREAU OF HIGHWAY DEVELOPMENT STANDARD PLAN FOR

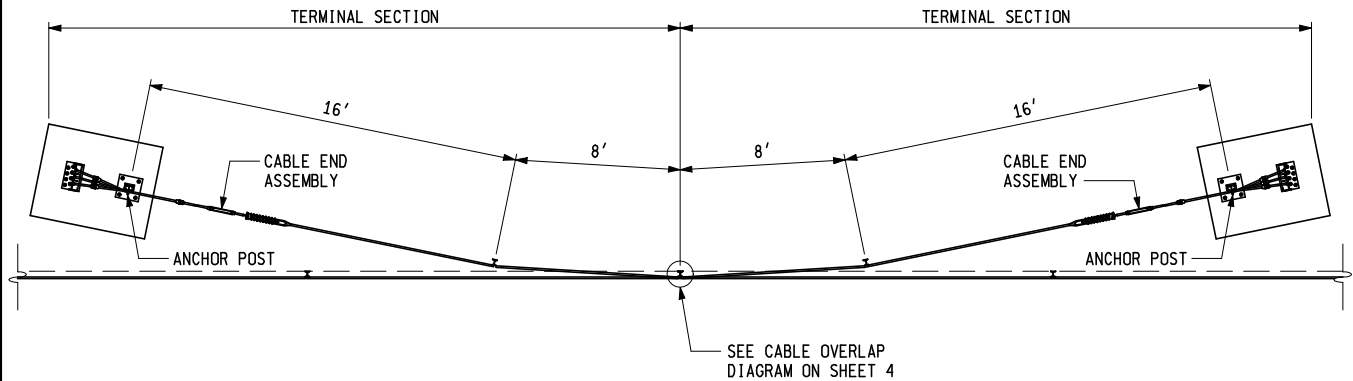
LOW TENSION
3-CABLE BARRIER

4-26-2007
F.H.W.A. APPROVAL

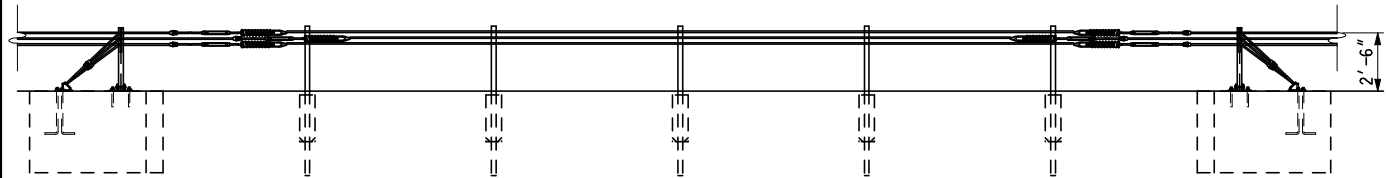
3-27-2007
PLAN DATE

R-70-C

SHEET
1 OF 10

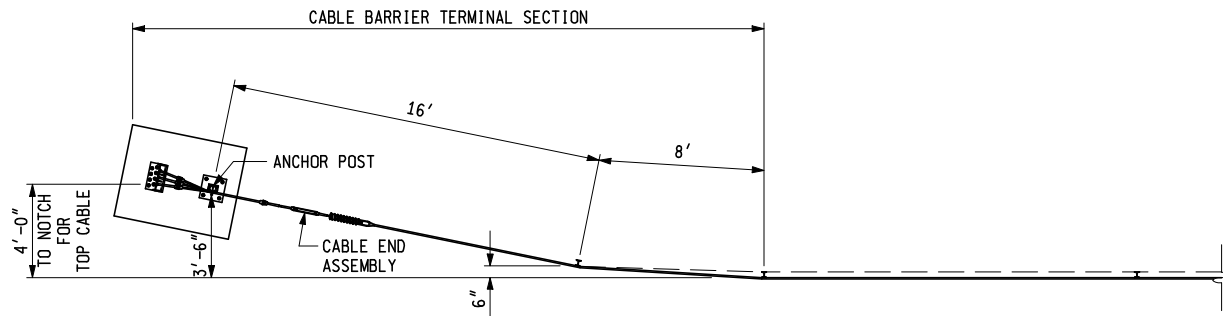


PLAN

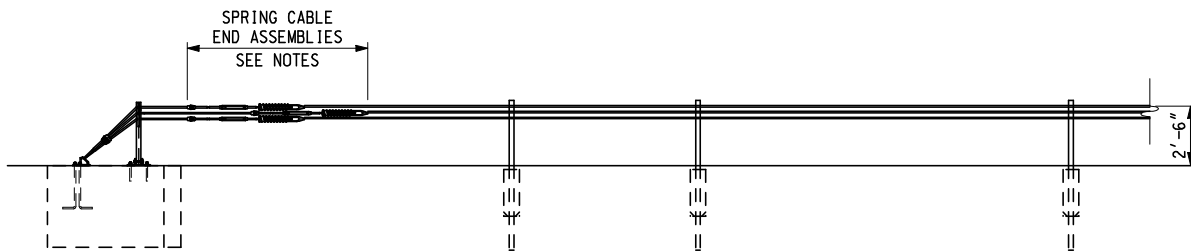


ELEVATION

INTERMEDIATE TERMINAL SECTION DETAIL



PLAN



ELEVATION

CABLE BARRIER TERMINAL SECTION DETAIL

MICHIGAN DEPARTMENT OF TRANSPORTATION
BUREAU OF HIGHWAY DEVELOPMENT STANDARD PLAN FOR

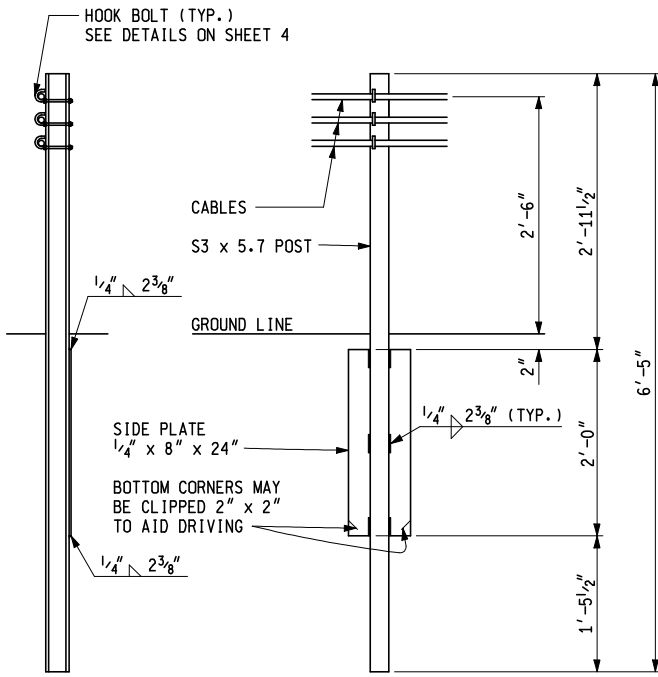
LOW TENSION
3-CABLE BARRIER

4-26-2007
F.H.W.A. APPROVAL

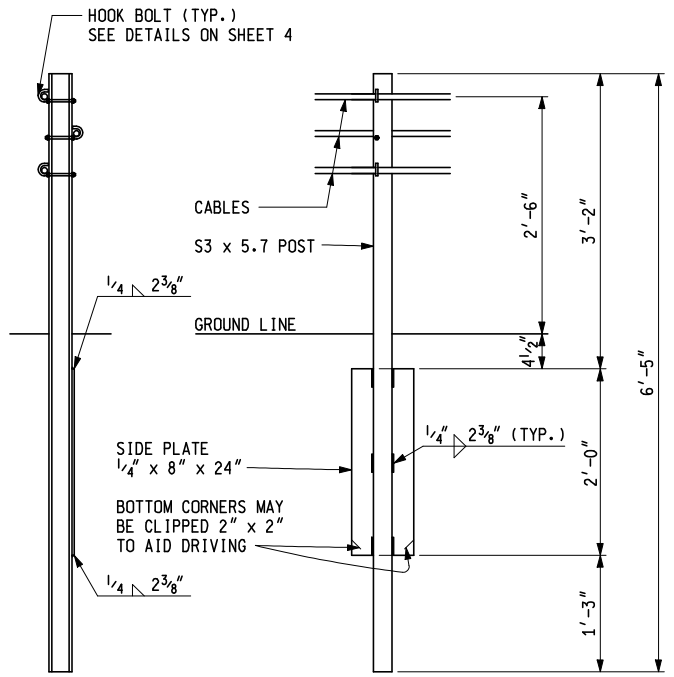
3-27-2007
PLAN DATE

R-70-C

SHEET
2 OF 10

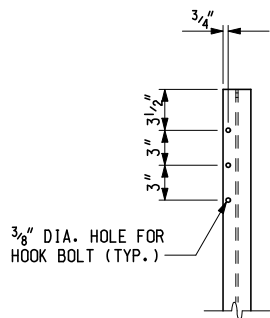


TYPE R
ROADSIDE BARRIER

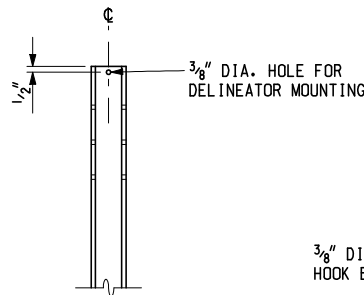


TYPE M
MEDIAN BARRIER

LINE POST DETAIL

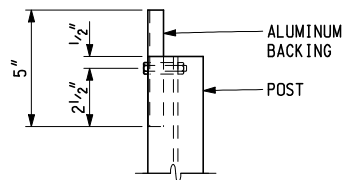


TYPE R
ROADSIDE BARRIER

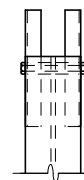


TYPE M
MEDIAN BARRIER

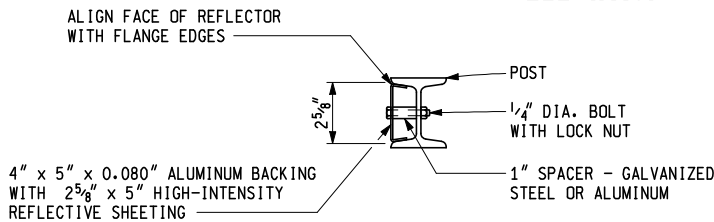
LINE POST HOLE PLACEMENT DETAIL



ELEVATION



INSTALL ON BOTH SIDES OF POST WHEN
IN MEDIAN OR BI-DIRECTIONAL ROADWAY



**PLAN
REFLECTOR DETAIL**

MICHIGAN DEPARTMENT OF TRANSPORTATION
BUREAU OF HIGHWAY DEVELOPMENT STANDARD PLAN FOR

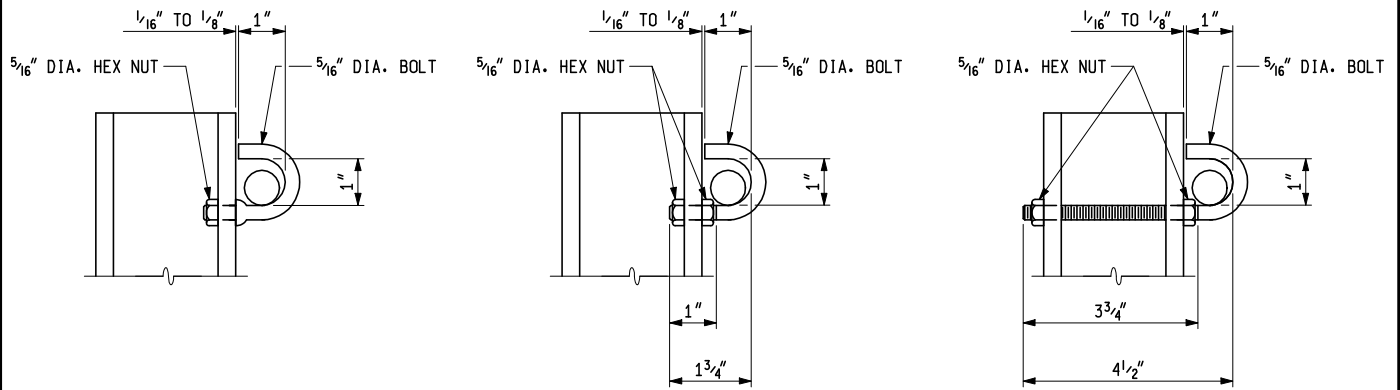
**LOW TENSION
3-CABLE BARRIER**

4-26-2007
F.H.W.A. APPROVAL

3-27-2007
PLAN DATE

R-70-C

SHEET
3 OF 10

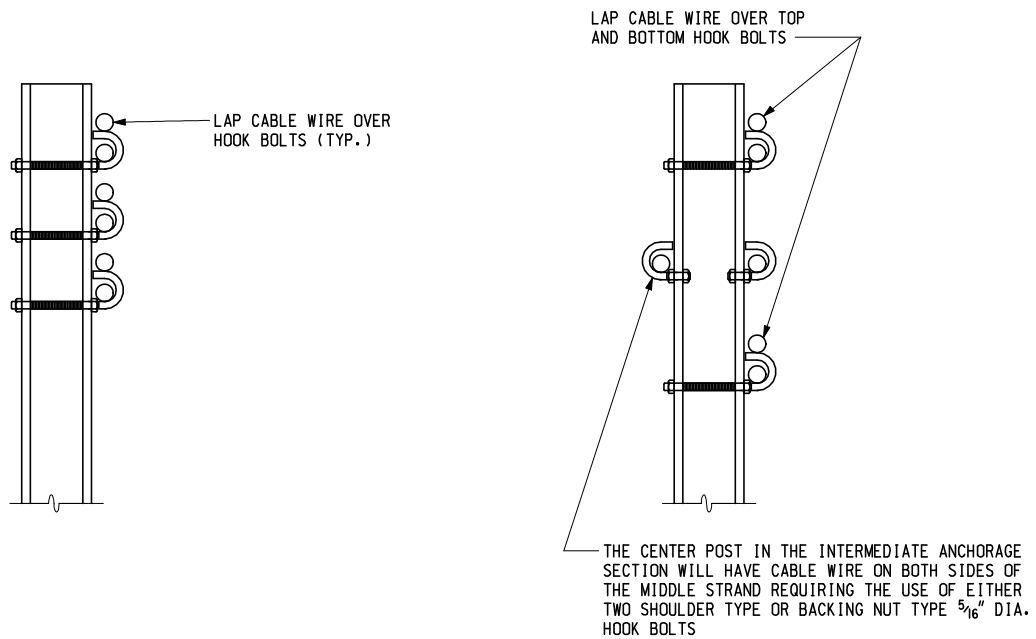


SHOULDER TYPE

BACKING NUT TYPE

FULL BOLT TYPE

ALTERNATE 5/16" DIAMETER HOOK BOLT DETAILS



TYPE R
ROADSIDE BARRIER

TYPE M
MEDIAN BARRIER

CABLE OVERLAP DIAGRAM

MICHIGAN DEPARTMENT OF TRANSPORTATION
BUREAU OF HIGHWAY DEVELOPMENT STANDARD PLAN FOR

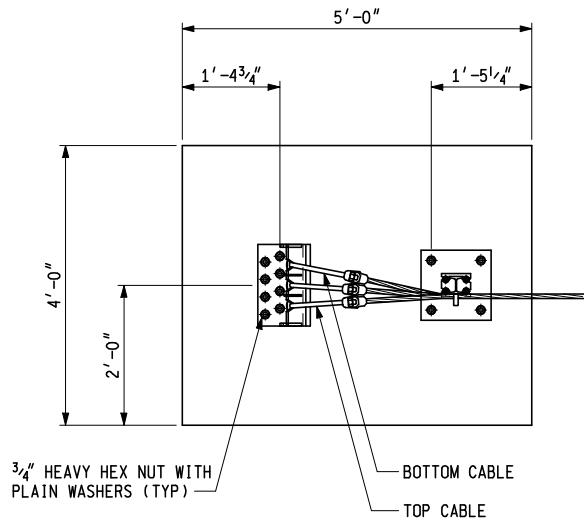
LOW TENSION
3-CABLE BARRIER

4-26-2007
F.H.W.A. APPROVAL

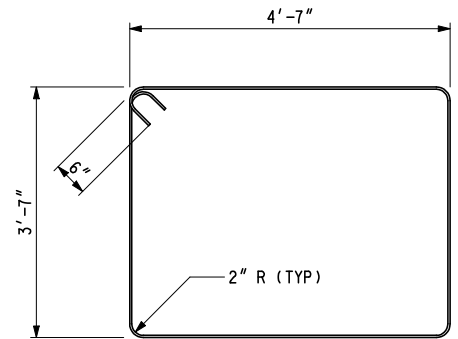
3-27-2007
PLAN DATE

R-70-C

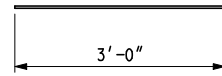
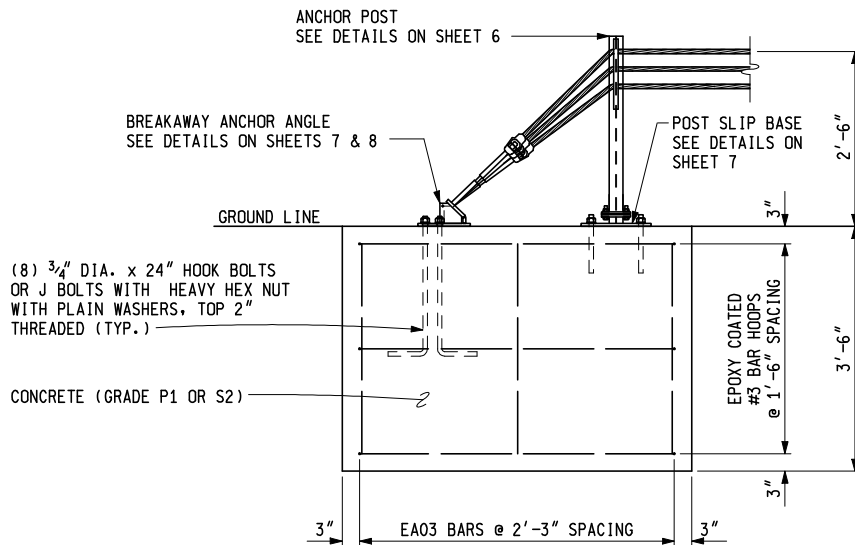
SHEET
4 OF 10



PLAN



EPOXY COATED #3 BAR HOOP
3 REQUIRED



EA03 BAR
6 REQUIRED

ELEVATION

CAST-IN-PLACE FOOTING

MICHIGAN DEPARTMENT OF TRANSPORTATION
BUREAU OF HIGHWAY DEVELOPMENT STANDARD PLAN FOR

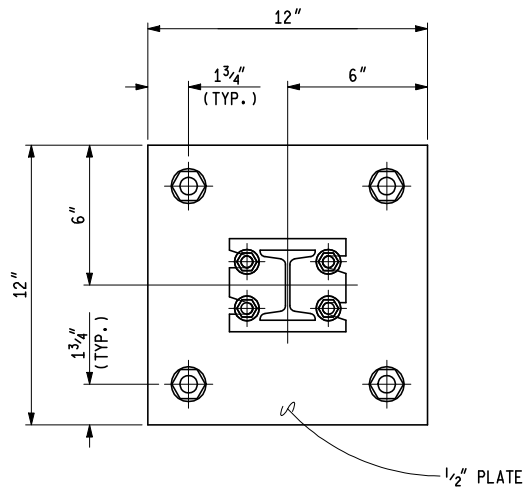
LOW TENSION
3-CABLE BARRIER

4-26-2007
F.H.W.A. APPROVAL

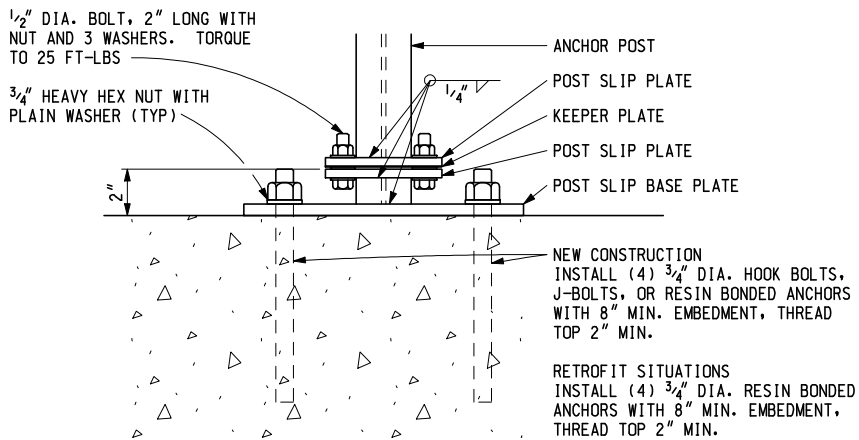
3-27-2007
PLAN DATE

R-70-C

SHEET
5 OF 10

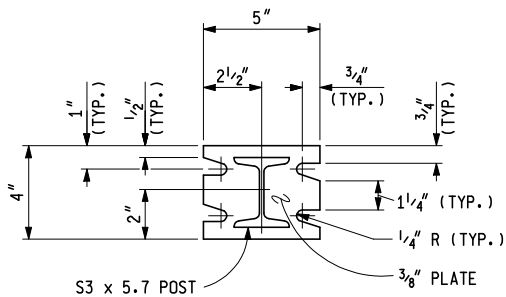


PLAN

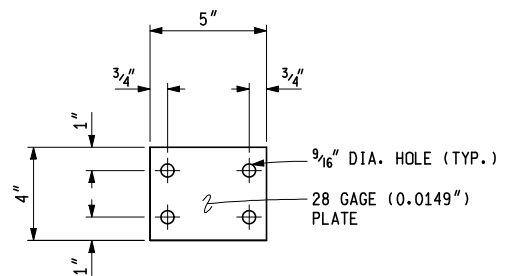


ELEVATION

POST SLIP BASE



POST SLIP PLATE DETAIL



KEEPER PLATE DETAIL

MICHIGAN DEPARTMENT OF TRANSPORTATION
BUREAU OF HIGHWAY DEVELOPMENT STANDARD PLAN FOR

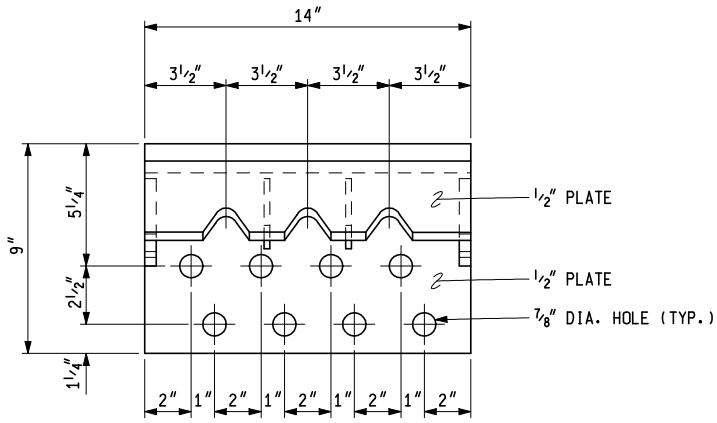
LOW TENSION
3-CABLE BARRIER

4-26-2007
F.H.W.A. APPROVAL

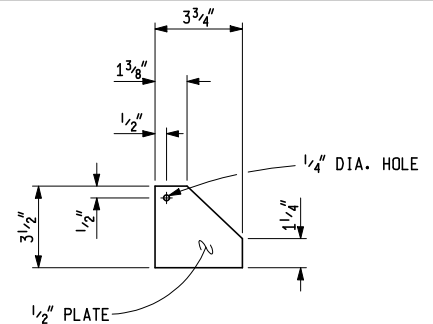
3-27-2007
PLAN DATE

R-70-C

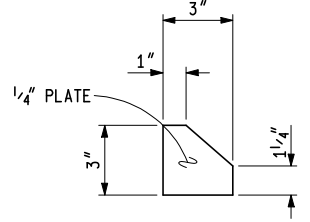
SHEET
7 OF 10



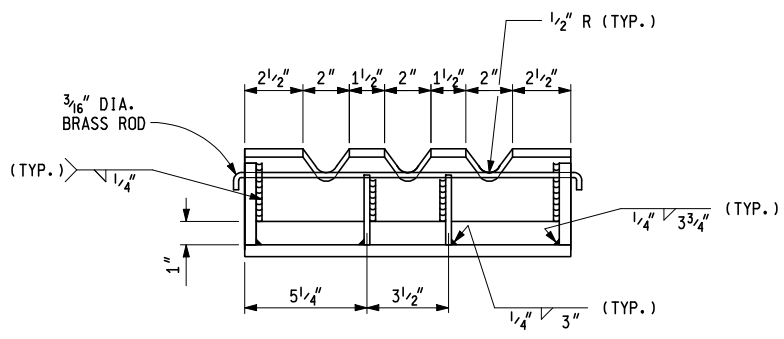
PLAN VIEW



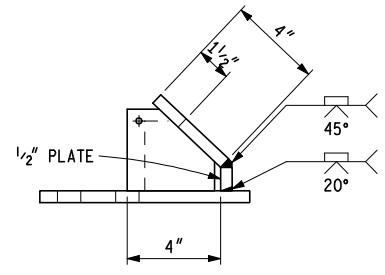
END GUSSET



INSIDE GUSSET

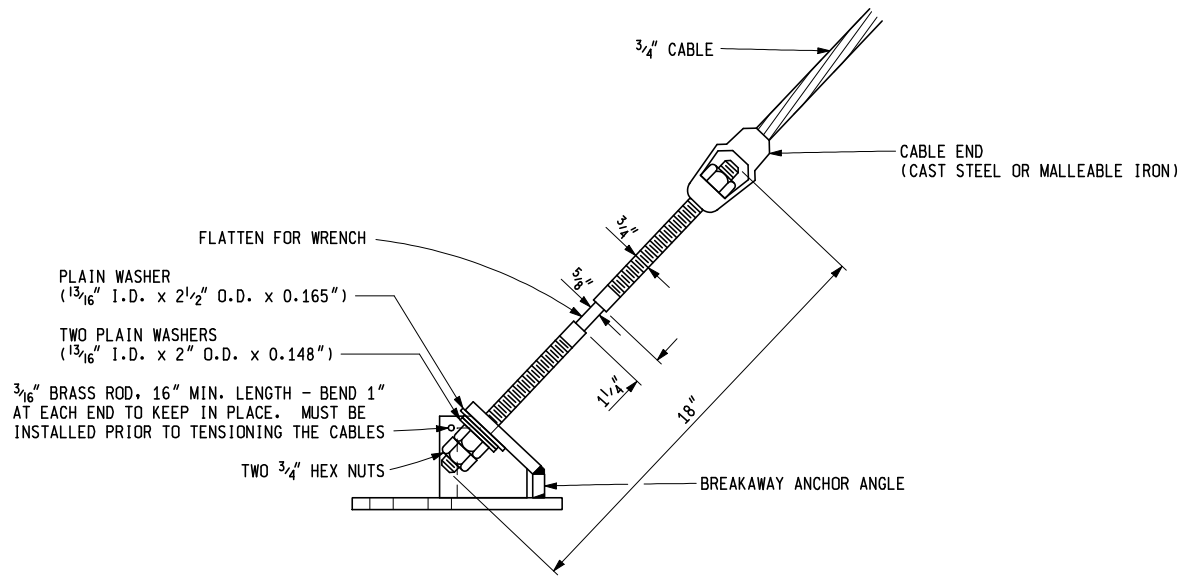


ELEVATION



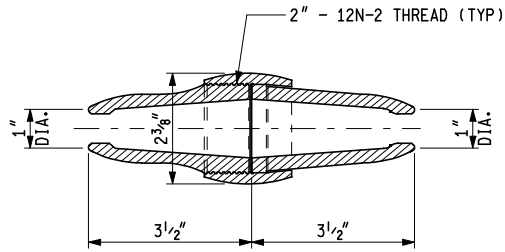
SIDE VIEW

BREAKAWAY ANCHOR ANGLE

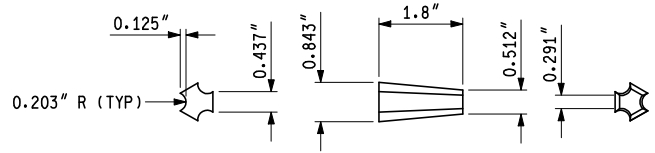


CABLE END ASSEMBLY TO
BREAKAWAY ANCHOR ANGLE DETAIL

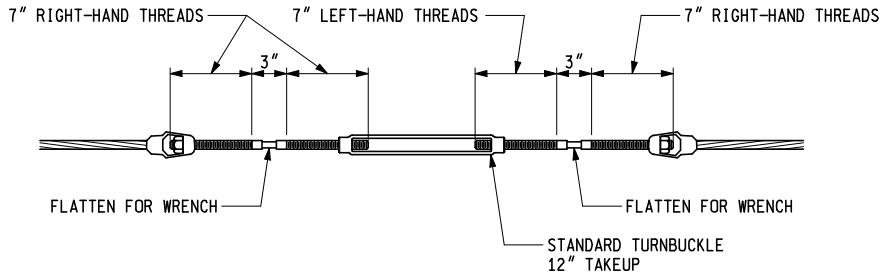
MICHIGAN DEPARTMENT OF TRANSPORTATION BUREAU OF HIGHWAY DEVELOPMENT STANDARD PLAN FOR		
LOW TENSION 3-CABLE BARRIER		
4-26-2007 F.H.W.A. APPROVAL	3-27-2007 PLAN DATE	R-70-C
		SHEET 8 OF 10



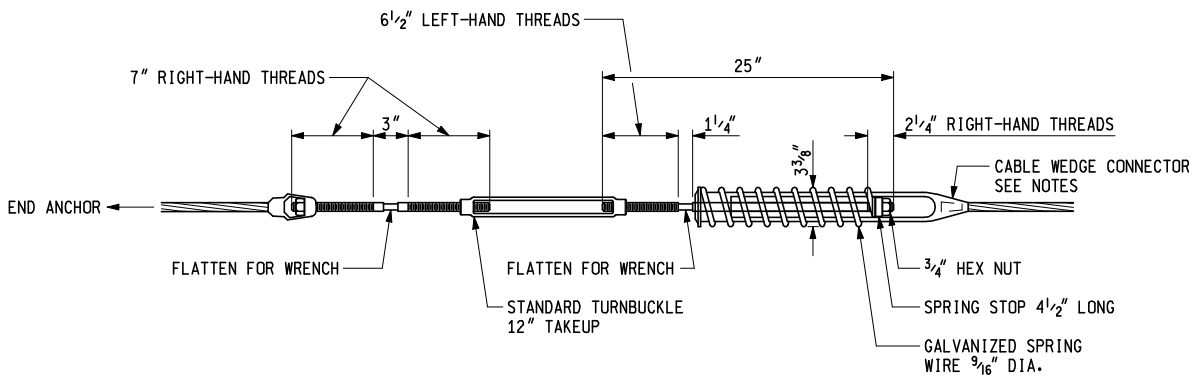
CABLE SPLICE
USE WITH WEDGE



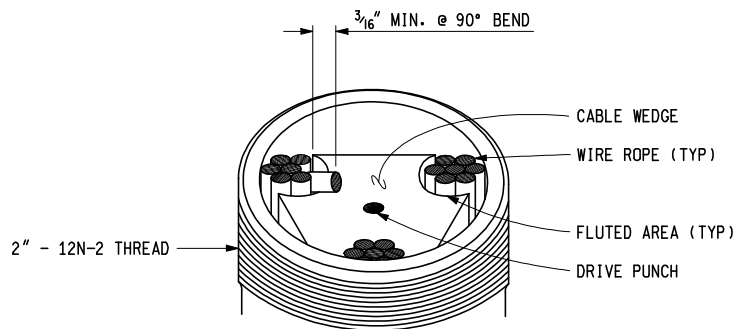
CABLE WEDGE
USE WITH ALL CABLE FITTINGS



TURNBUCKLE ASSEMBLY



SPRING CABLE END ASSEMBLY



WIRE BEND DETAIL
SEE NOTES

MICHIGAN DEPARTMENT OF TRANSPORTATION
BUREAU OF HIGHWAY DEVELOPMENT STANDARD PLAN FOR

**LOW TENSION
3-CABLE BARRIER**

4-26-2007
F.H.W.A. APPROVAL

3-27-2007
PLAN DATE

R-70-C

SHEET
9 OF 10

NOTES:

WHEN CABLE BARRIER IS INSTALLED IN FRONT OF SLOPES STEEPER THAN 1:6, THE DISTANCE BETWEEN THE POSTS AND THE SLOPE HINGE LINE SHALL BE 1'-0" MINIMUM.

GUARDRAIL REFLECTORS SHALL BE INSTALLED ON LINE POSTS AND SPACED AT THE FOLLOWING INTERVALS:

- A) 48'-0" ON TANGENT SECTIONS AND CURVES WITH A RADIUS OF 1150' OR MORE
- B) 24'-0" ON CURVES WITH A RADIUS LESS THAN 1150'

GUARDRAIL REFLECTORS SHALL MATCH THE COLOR OF THE EDGE LINES.

STAGGER SPRING CABLE END ASSEMBLIES FOR CLEARANCE BETWEEN UNITS. INSTALLATION OF CABLE END ASSEMBLIES SHALL BE AS FOLLOWS:

- A) FOR CABLE RUNS UP TO 500' IN LENGTH, USE THE SPRING CABLE END ASSEMBLY ON ONE END AND TURNBUCKLE ONLY ON THE OTHER END OF EACH CABLE.
- B) FOR CABLE RUNS OVER 500' AND UP TO 2000' IN LENGTH, USE SPRING CABLE END ASSEMBLIES ON EACH END OF EACH CABLE.

WHERE THE CABLE IS CONNECTED TO A CABLE SOCKET WITH A WEDGE TYPE CONNECTOR, ONE WIRE OF THE WIRE ROPE SHALL BE CRIMPED OVER THE BASE OF THE WEDGE TO HOLD IT FIRMLY IN PLACE.

MICHIGAN DEPARTMENT OF TRANSPORTATION
BUREAU OF HIGHWAY DEVELOPMENT STANDARD PLAN FOR

LOW TENSION
3-CABLE BARRIER

4-26-2007
F.H.W.A. APPROVAL

3-27-2007
PLAN DATE

R-70-C

SHEET
10 OF 10