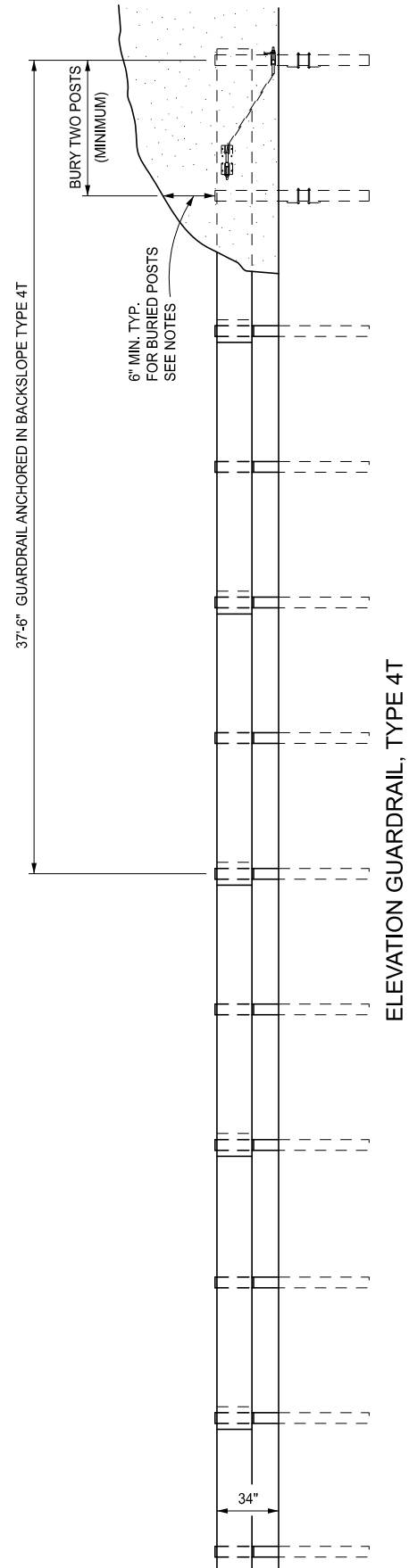
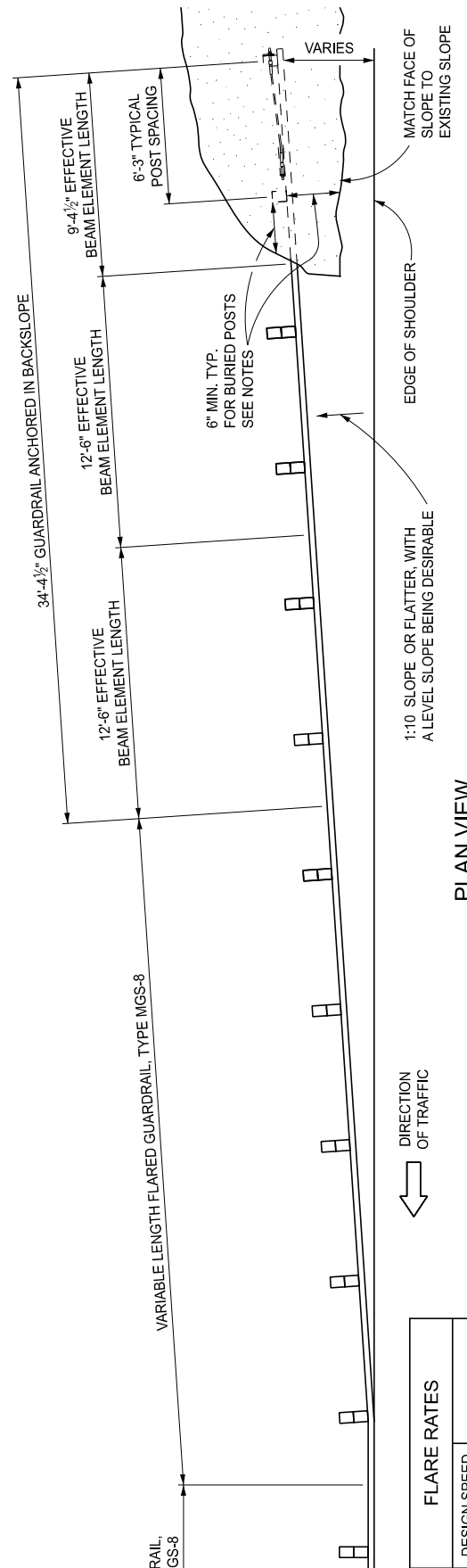


FLARE RATES	
DESIGN SPEED (mph)	FLARE
30	7:1
40	8:1
50	11:1
60	14:1
70	15:1



FLARE RATES	
DESIGN SPEED (mph)	FLARE
30	7:1
40	8:1
50	11:1
60	14:1
70	15:1



FLARE RATES	
DESIGN SPEED (mph)	FLARE
30	7:1
40	8:1
50	11:1
60	14:1
70	15:1

APPROVED BY: \_\_\_\_\_  
DIRECTOR, BUREAU OF FIELD SERVICES

APPROVED BY: \_\_\_\_\_  
DIRECTOR, BUREAU OF DEVELOPMENT



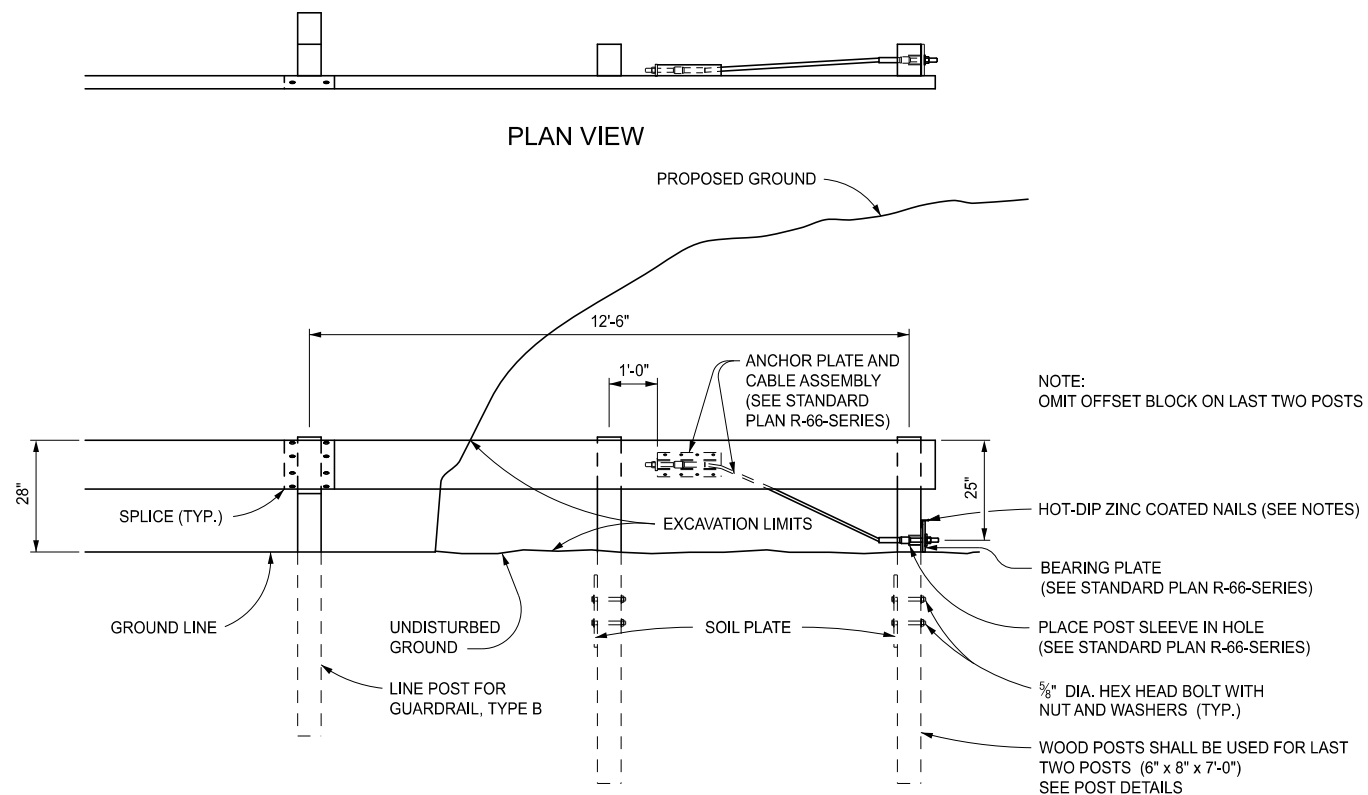
SPECIAL DETAIL FOR  
GUARDRAIL ANCHORED IN BACKSLOPE  
TYPES 4B, 4T, & 4MGS-8

(SPECIAL DETAIL)	12/06/2022	SPECIAL DETAIL 24	SHEET 1 OF 8
FHWA APPROVAL	PLAN DATE		

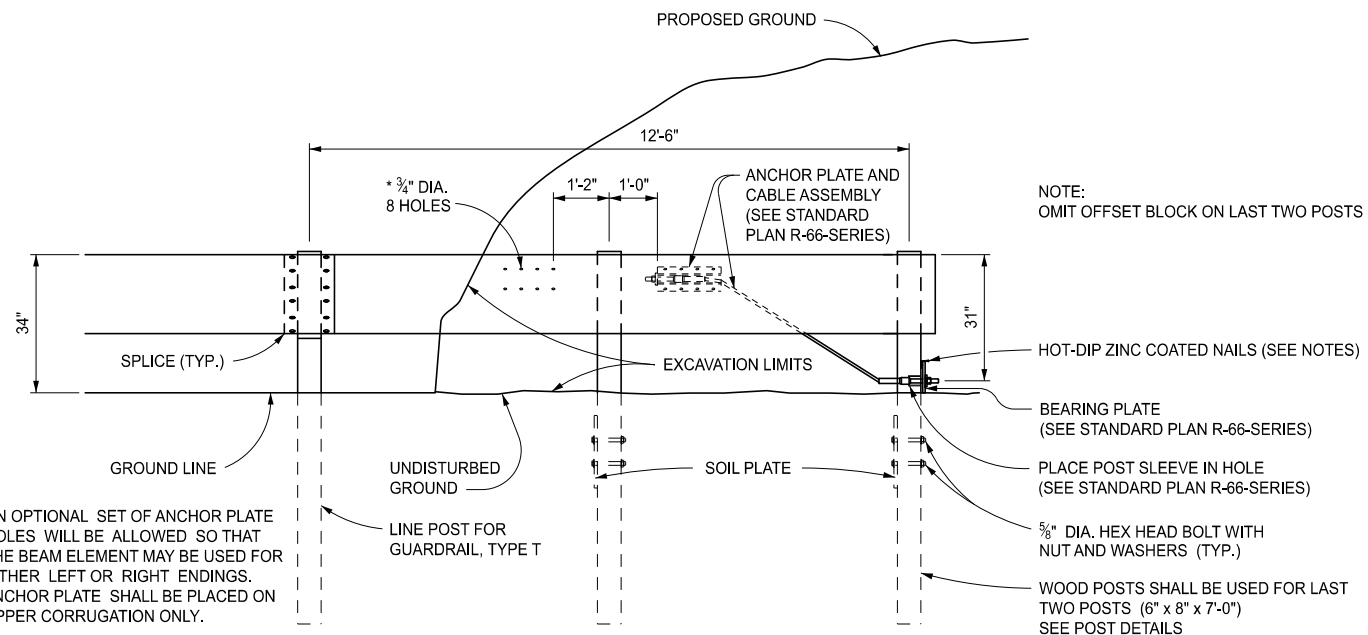


SPECIAL DETAIL FOR  
GUARDRAIL ANCHORED IN BACKSLOPE  
TYPES 4B, 4T, & 4MGS-8

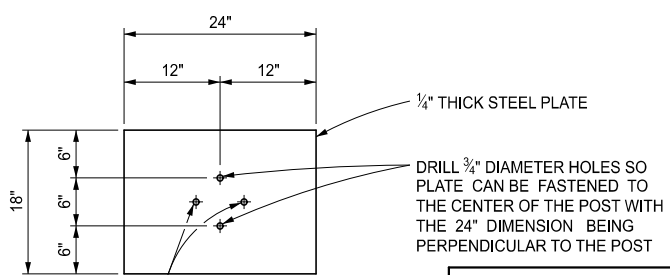
(SPECIAL DETAIL)	12/06/2022	SPECIAL DETAIL 24	SHEET 2 OF 8
FHWA APPROVAL	PLAN DATE		



ELEVATION GUARDRAIL, TYPE 4B

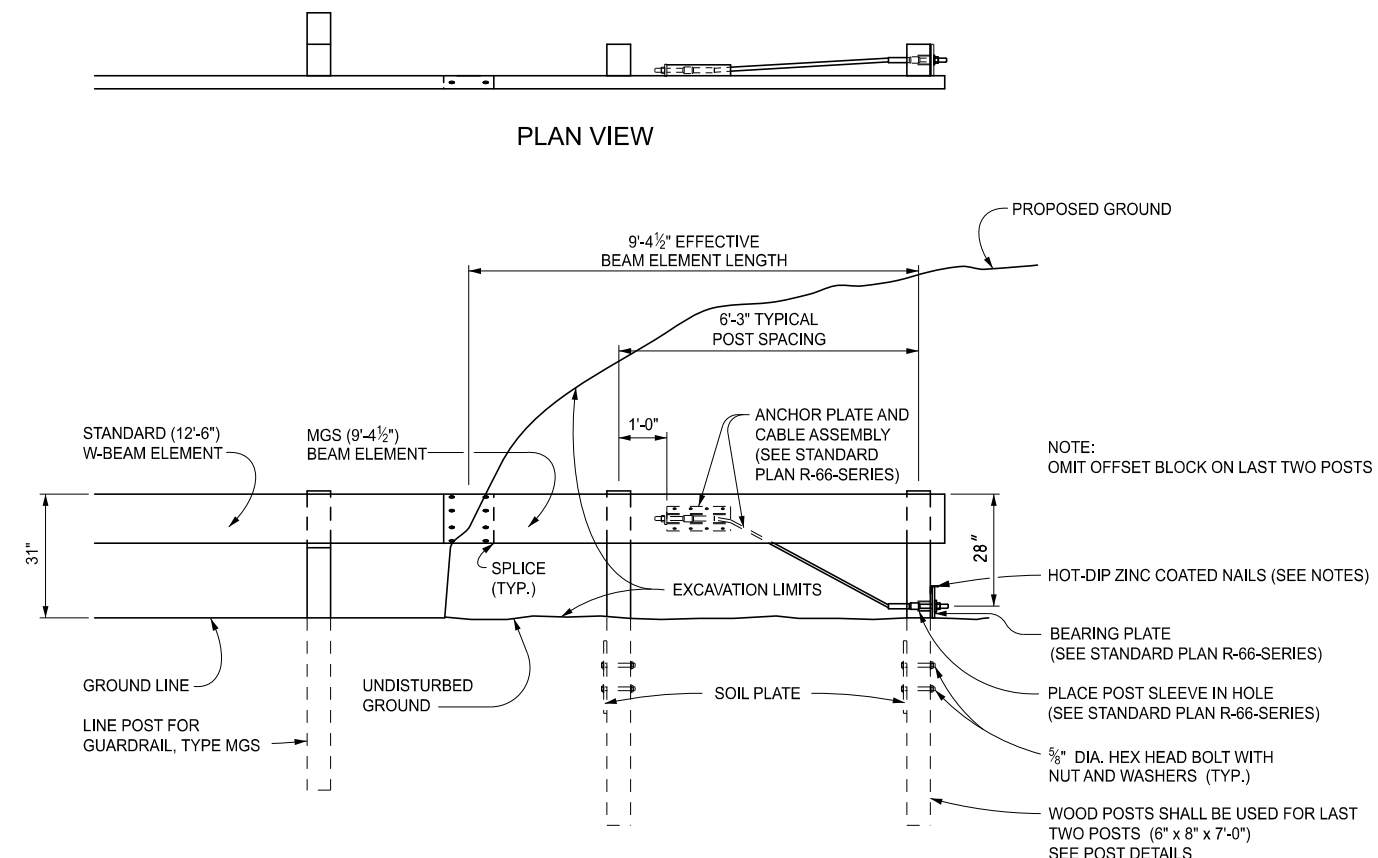


ELEVATION GUARDRAIL, TYPE 4T

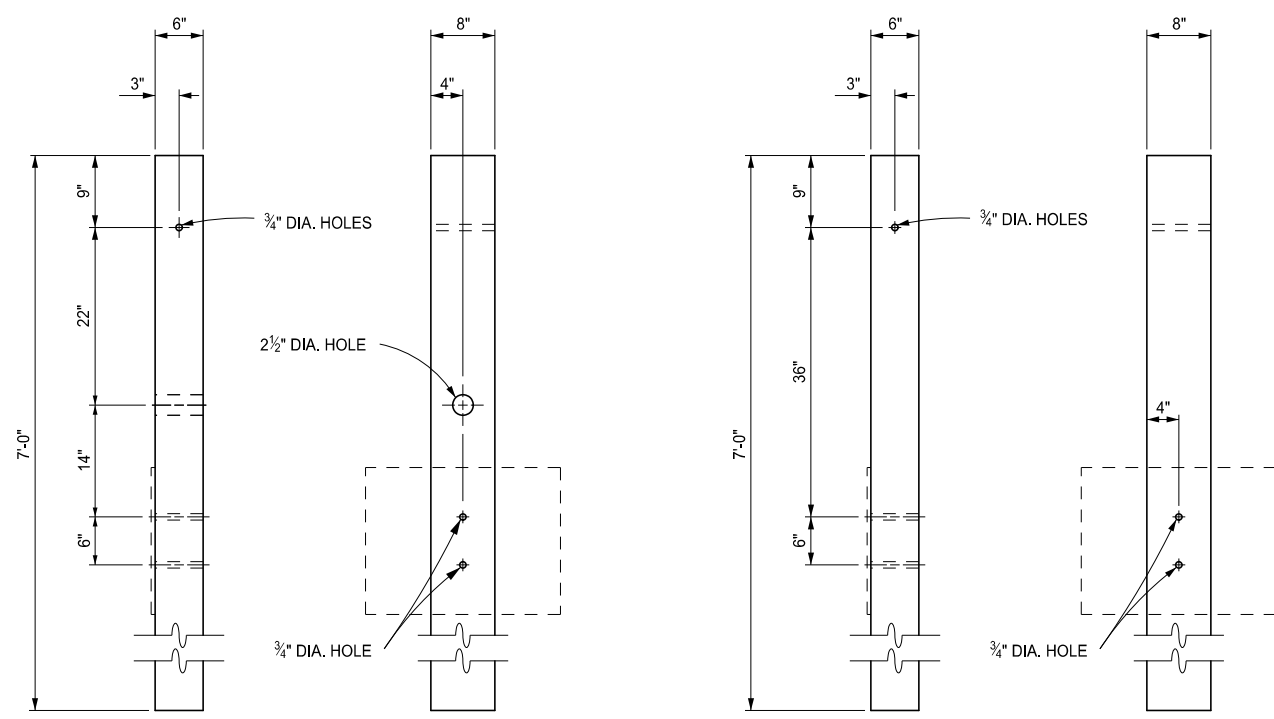


SOIL PLATE

<p>DEPARTMENT DIRECTOR BRADLEY C. WIEFERICH, PE</p>	SPECIAL DETAIL FOR GUARDRAIL ANCHORED IN BACKSLOPE TYPES 4B, 4T, & 4MGS-8			SHEET 3 OF 8
	(SPECIAL DETAIL) FHWA APPROVAL	12/06/2022 PLAN DATE	<b>SPECIAL DETAIL 24</b>	



ELEVATION GUARDRAIL, TYPE 4MGS-8



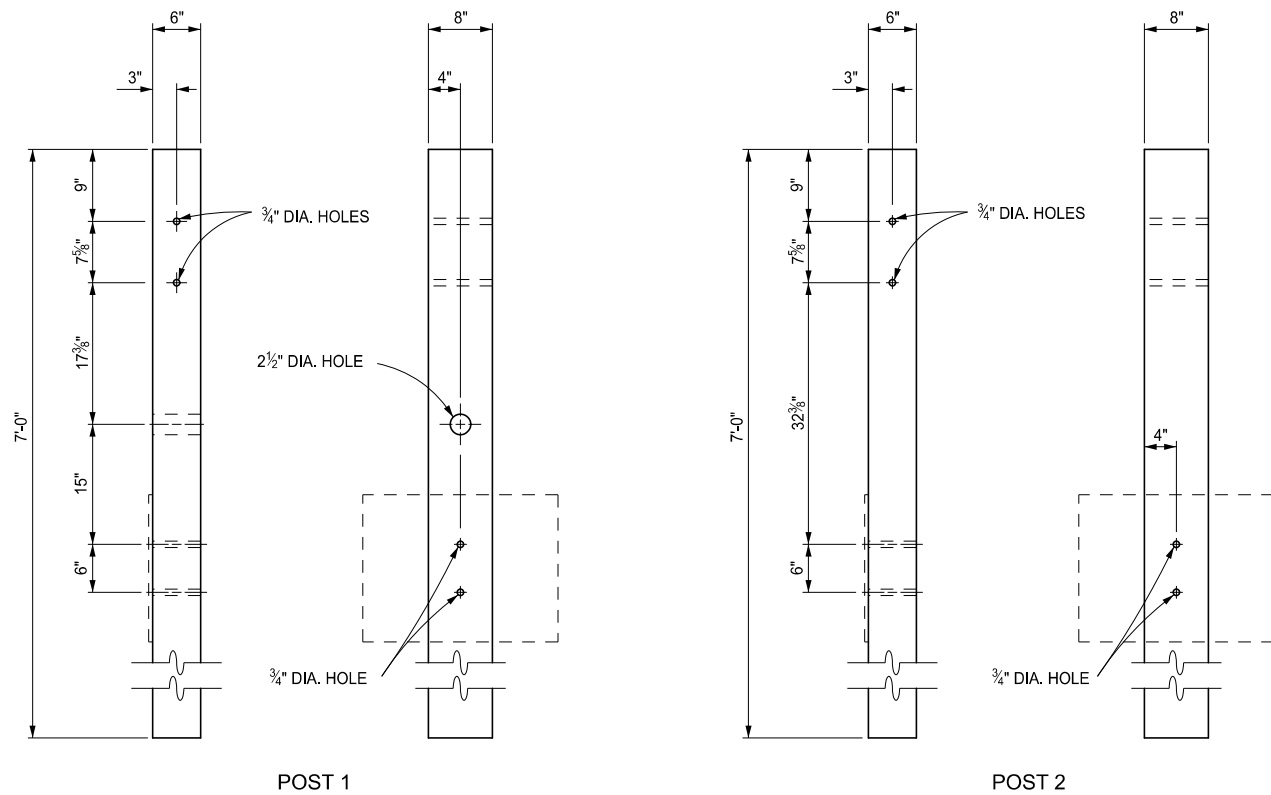
POST 1

POST 2

WOOD POST DETAILS  
GUARDRAIL ANCHORED IN BACKSLOPE TYPE 4MGS-8

<p>DEPARTMENT DIRECTOR BRADLEY C. WIEFERICH, PE</p>	SPECIAL DETAIL FOR GUARDRAIL ANCHORED IN BACKSLOPE TYPES 4B, 4T, & 4MGS-8			SHEET 4 OF 8
	(SPECIAL DETAIL) FHWA APPROVAL	12/06/2022 PLAN DATE	<b>SPECIAL DETAIL 24</b>	

SECT

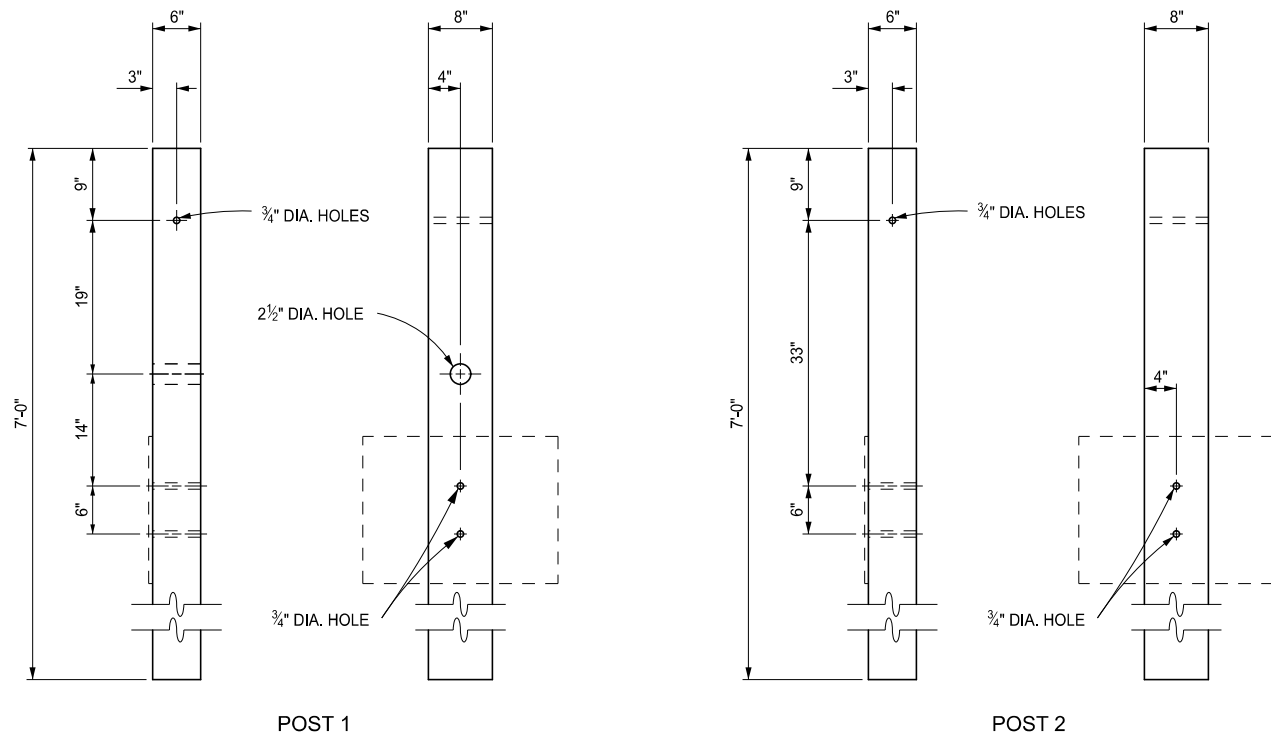


POST 1

POST 2

**WOOD POST DETAILS**

GUARDRAIL ANCHORED IN BACKSLOPE TYPE 4T

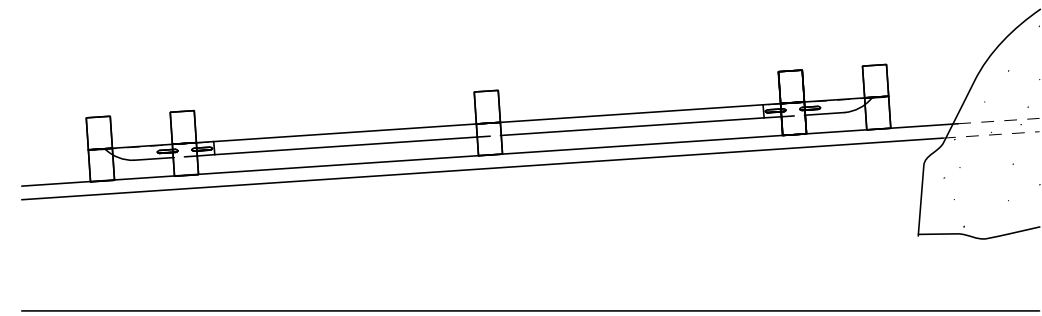


POST 1

POST 2

**WOOD POST DETAILS**

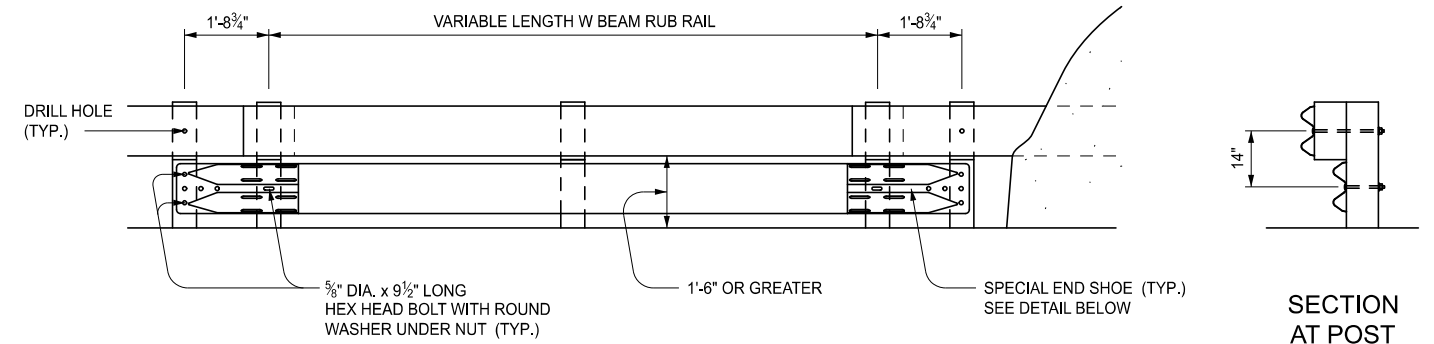
GUARDRAIL ANCHORED IN BACKSLOPE TYPE 4B



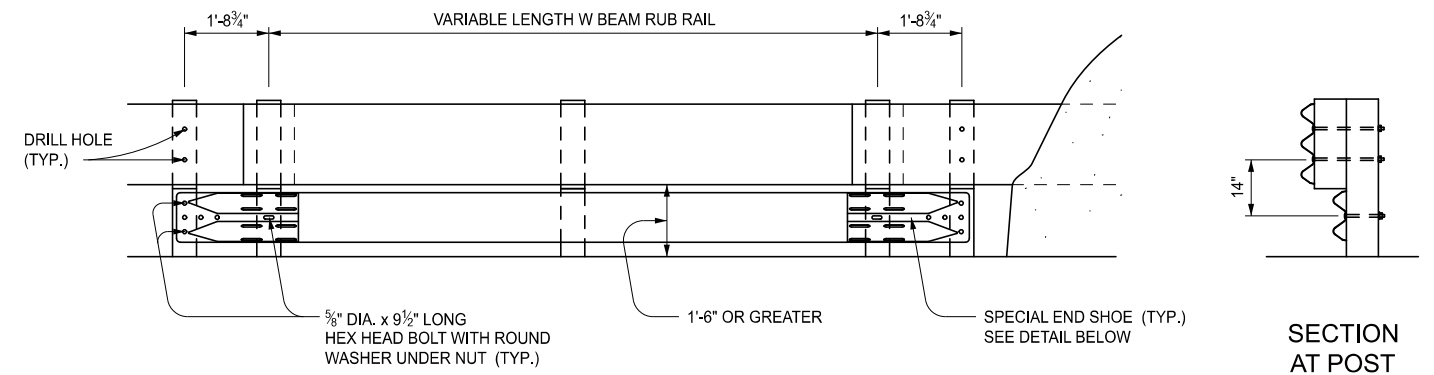
**PLAN VIEW**  
WITH RUB RAIL

NOTE:

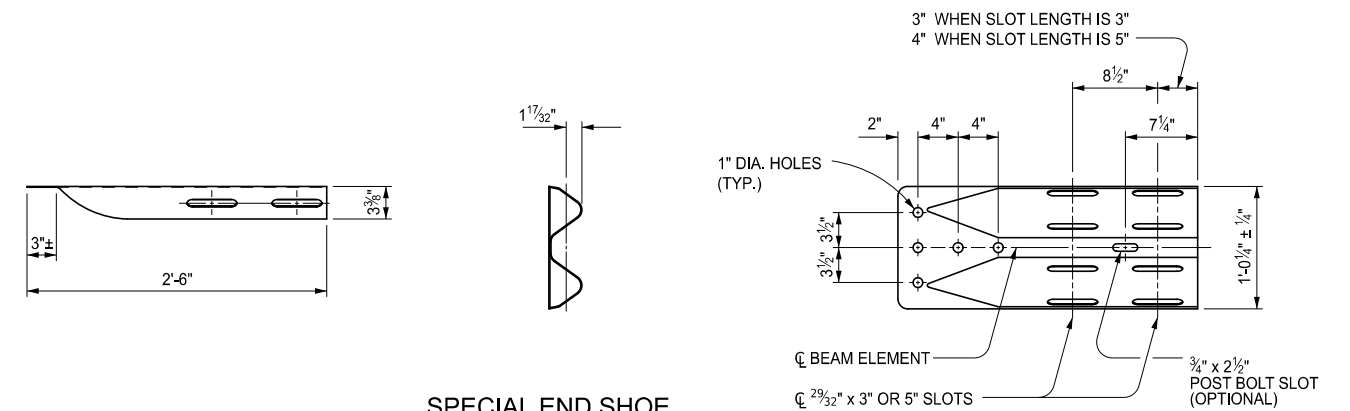
EXTRA POSTS, SPECIAL END SHOES, GUARDRAIL, HARDWARE AND ANY EXTRA WORK ARE INCLUDED IN THE BID ITEM GUARDRAIL ANCHORED IN BACKSLOPE TYPE 4B OR TYPE 4T.



**ELEVATION GUARDRAIL, TYPE 4B**  
WITH RUB RAIL



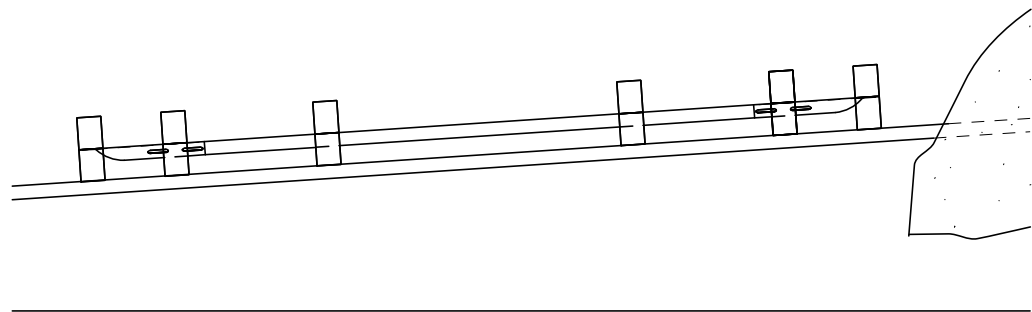
**ELEVATION GUARDRAIL, TYPE 4T**  
WITH RUB RAIL



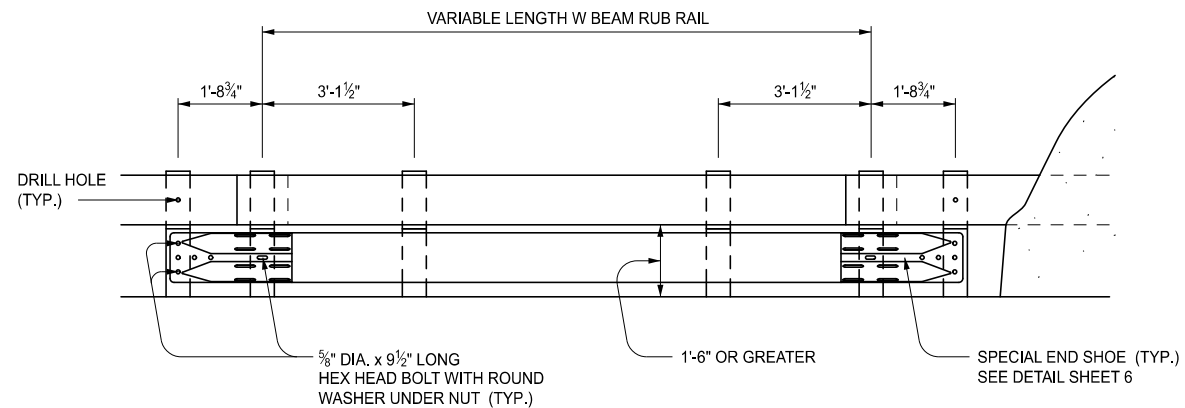
**SPECIAL END SHOE**  
(3" OR 5" SLOT LENGTHS)

	SPECIAL DETAIL FOR GUARDRAIL ANCHORED IN BACKSLOPE TYPES 4B, 4T, & 4MGS-8			SHEET 5 OF 8
	(SPECIAL DETAIL) FHWA APPROVAL	12/06/2022 PLAN DATE	<b>SPECIAL DETAIL 24</b>	

	SPECIAL DETAIL FOR GUARDRAIL ANCHORED IN BACKSLOPE TYPES 4B, 4T, & 4MGS-8			SHEET 6 OF 8
	(SPECIAL DETAIL) FHWA APPROVAL	12/06/2022 PLAN DATE	<b>SPECIAL DETAIL 24</b>	

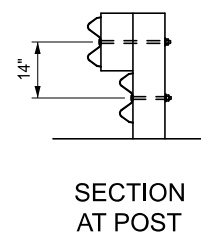


PLAN VIEW GUARDRAIL, TYPE 4MGS-8  
WITH RUB RAIL

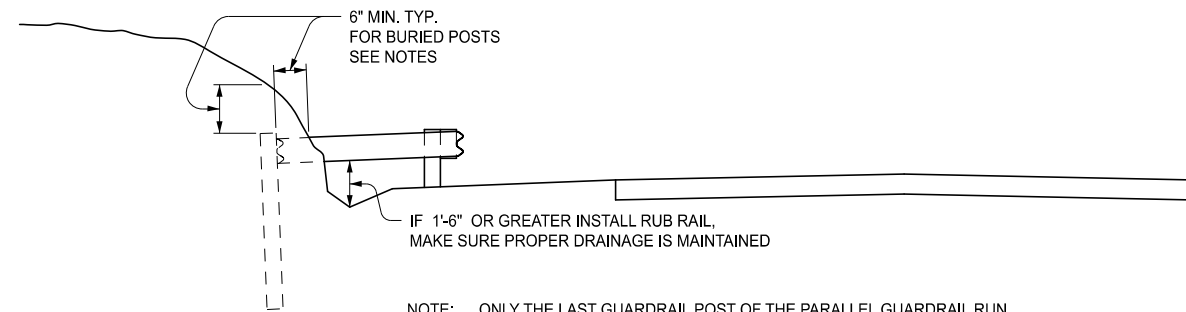


ELEVATION GUARDRAIL, TYPE 4MGS-8  
WITH RUB RAIL

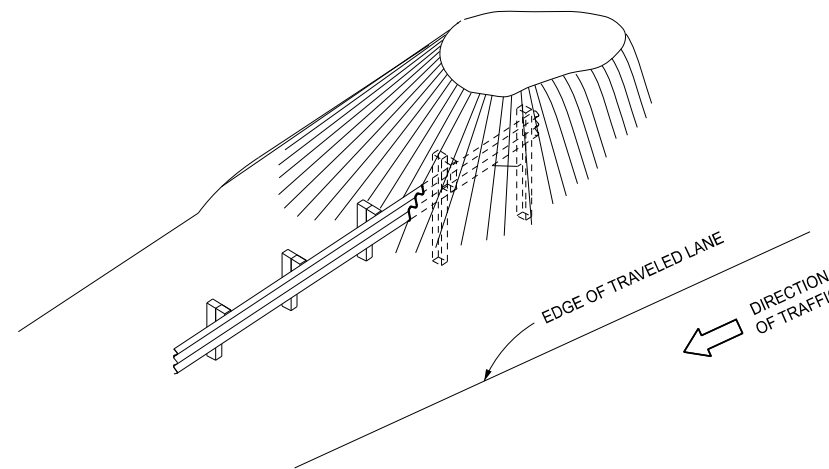
NOTE:  
EXTRA POSTS, SPECIAL END SHOES, GUARDRAIL, HARDWARE AND ANY EXTRA WORK ARE INCLUDED IN THE BID ITEM GUARDRAIL ANCHORED IN BACKSLOPE TYPE 4MGS-8



SECTION AT POST



NOTE: ONLY THE LAST GUARDRAIL POST OF THE PARALLEL GUARDRAIL RUN AND THE LAST BURIED GUARDRAIL POST ARE SHOWN. (OTHER POSTS ALONG THE FLARED GUARDRAIL RUN ARE NOT SHOWN)



BURIED ENDING SKETCHES

NOTES:

ALL POSTS, OFFSET BLOCKS, BEAM ELEMENTS, AND HARDWARE (INCLUDING BOLTS, NUTS, AND WASHERS) SHALL CONFORM TO THE STANDARD SPECIFICATIONS FOR CONSTRUCTION AND TO STANDARD PLAN R-60-SERIES, WHERE APPLICABLE, EXCEPT AS SPECIFIED ON THIS PLAN.

ALL 1:10 SLOPES SHALL BE GRADED TO CLASS A SLOPE TOLERANCES.

AFTER THE CABLE ASSEMBLY HAS BEEN TIGHTENED, A SECOND NUT SHALL BE INSTALLED SO THAT THE CABLE WILL NOT LOOSEN.

TWO HOT-DIP ZINC COATED NAILS SHALL BE DRIVEN INTO THE WOOD POST AT THE TOP OF THE BEARING PLATE TO KEEP THE BEARING PLATE FROM ROTATING.

WHEN ADDITIONAL POST BOLT SLOTS ARE REQUIRED, THEY SHALL BE DRILLED OR PUNCHED AND REGALVANIZED. BURNING WILL NOT BE ALLOWED.

TERMINAL SHALL BE SET A MINIMUM 6" INTO THE BACKSLOPE AND HAVE 6" OF COVER ON ALL SIDES TO LESSEN THE POSSIBILITY IT WILL BE EXPOSED BY EROSION AND SNAG AN IMPACTING VEHICLE.

THE GUARDRAIL SHALL REMAIN AT A CONSTANT HEIGHT RELATIVE TO THE LOCAL GRADE. A W BEAM RUB RAIL WILL BE REQUIRED IF THE OPENING UNDER THE PRIMARY RAIL IS 1'-6" OR MORE. SEE DETAILS.

	SPECIAL DETAIL FOR GUARDRAIL ANCHORED IN BACKSLOPE TYPES 4B, 4T, & 4MGS-8			SHEET 7 OF 8
	(SPECIAL DETAIL) FHWA APPROVAL	12/06/2022 PLAN DATE	<b>SPECIAL DETAIL 24</b>	

	SPECIAL DETAL FOR GUARDRAIL ANCHORED IN BACKSLOPE TYPES 4B, 4T, & 4MGS-8			SHEET 8 OF 8
	(SPECIAL DETAIL) FHWA APPROVAL	12/06/2022 PLAN DATE	<b>SPECIAL DETAIL 24</b>	

SECT