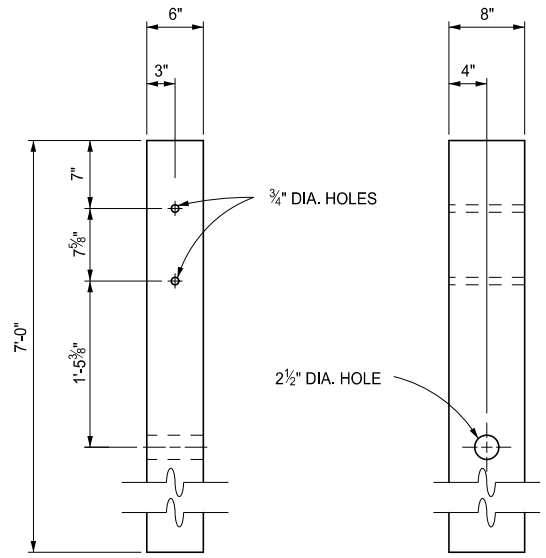
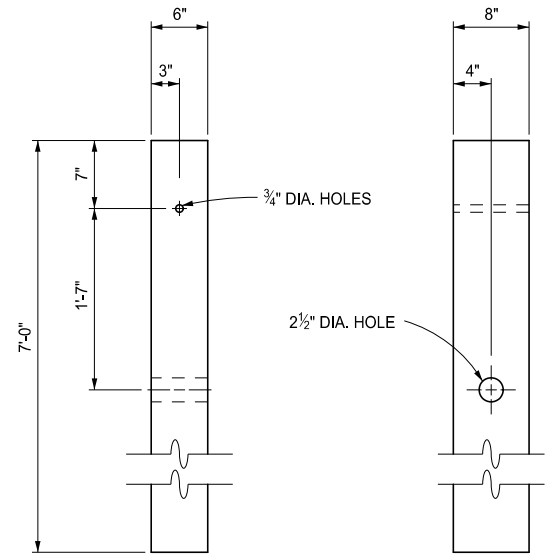


APPROVED BY: _____ DIRECTOR, BUREAU OF FIELD SERVICES		STANDARD PLAN FOR GUARDRAIL DEPARTING TERMINAL TYPES B, T, & MGS	
APPROVED BY: _____ DIRECTOR, BUREAU OF DEVELOPMENT		DEPARTMENT DIRECTOR BRADLEY C. WIEFERICH, PE	(SPECIAL DETAIL) FHWA APPROVAL
		R-66-E	SHEET 1 OF 4

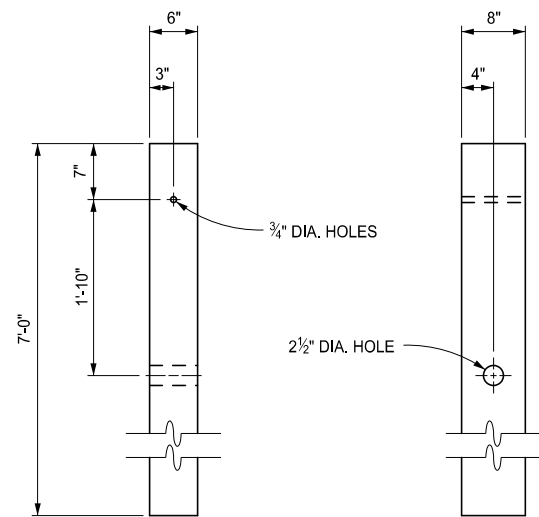
APPROVED BY: _____ DIRECTOR, BUREAU OF FIELD SERVICES		STANDARD PLAN FOR GUARDRAIL DEPARTING TERMINAL TYPES B, T, & MGS	
APPROVED BY: _____ DIRECTOR, BUREAU OF DEVELOPMENT		DEPARTMENT DIRECTOR BRADLEY C. WIEFERICH, PE	(SPECIAL DETAIL) FHWA APPROVAL
		R-66-E	SHEET 2 OF 4 SECT



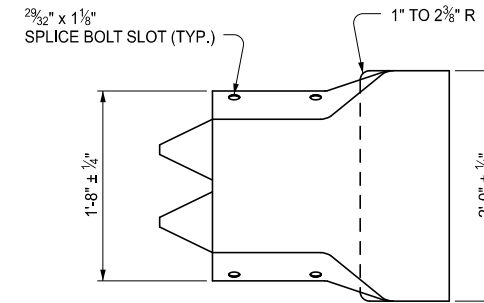
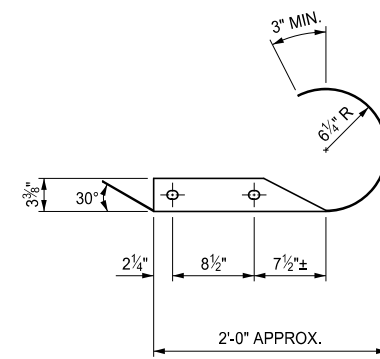
**WOOD POST DETAIL**  
( FOR LAST POST, GUARDRAIL DEPARTING TERMINAL TYPE T )



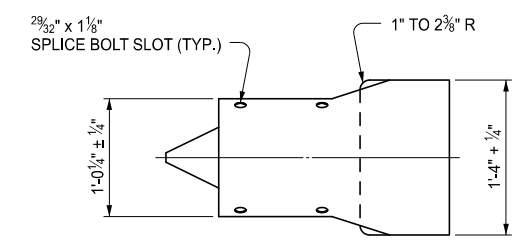
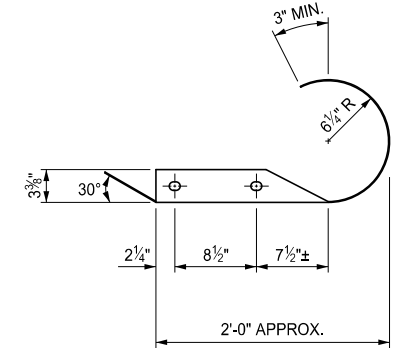
**WOOD POST DETAIL**  
( FOR LAST POST, GUARDRAIL DEPARTING TERMINAL TYPE B )



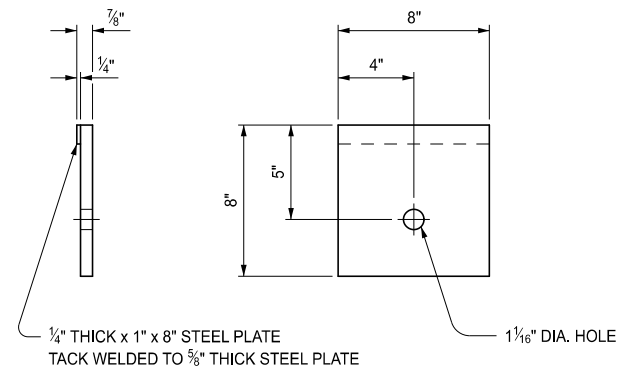
**WOOD POST DETAIL**  
( FOR LAST POST, GUARDRAIL DEPARTING TERMINAL TYPE MGS )



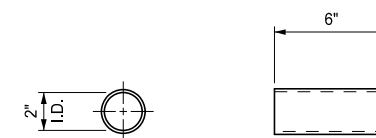
**TERMINAL END SHOE, TYPE T**



**TERMINAL END SHOE,  
TYPE A, TYPE B OR TYPE MGS**



**BEARING PLATE**



**POST SLEEVE**

**NOTES:**

ALL POSTS, OFFSET BLOCKS, BEAM ELEMENTS, AND HARDWARE (INCLUDING BOLTS, NUTS, AND WASHERS) SHALL CONFORM TO THE STANDARD SPECIFICATIONS FOR CONSTRUCTION AND TO STANDARD PLAN R-60-SERIES, WHERE APPLICABLE, EXCEPT AS SPECIFIED ON THIS STANDARD.

ALL 1:10 SLOPES SHALL BE GRADED TO CLASS A SLOPE TOLERANCES.

FOR DETAILS OF GUARDRAIL PLACEMENT, SEE STANDARD PLAN R-59-SERIES.

AFTER THE CABLE ASSEMBLY HAS BEEN TIGHTENED, A SECOND NUT SHALL BE INSTALLED ON EACH END OF THE CABLE SO THAT THE CABLE WILL NOT LOOSEN.

TWO HOT-DIP ZINC COATED NAILS SHALL BE DRIVEN INTO THE WOOD POST AT THE TOP OF THE BEARING PLATE TO KEEP THE BEARING PLATE FROM ROTATING.



DEPARTMENT DIRECTOR  
BRADLEY C. WIEFERICH, PE

STANDARD PLAN FOR  
**GUARDRAIL DEPARTING TERMINAL TYPES B, T, & MGS**

(SPECIAL DETAIL)  
FHWA APPROVAL

09/14/2023  
PLAN DATE

**R-66-E**

SHEET  
3 OF 4



DEPARTMENT DIRECTOR  
BRADLEY C. WIEFERICH, PE

STANDARD PLAN FOR  
**GUARDRAIL DEPARTING TERMINAL TYPES B, T, & MGS**

(SPECIAL DETAIL)  
FHWA APPROVAL

09/14/2023  
PLAN DATE

**R-66-E**

SHEET  
4 OF 4

SECT