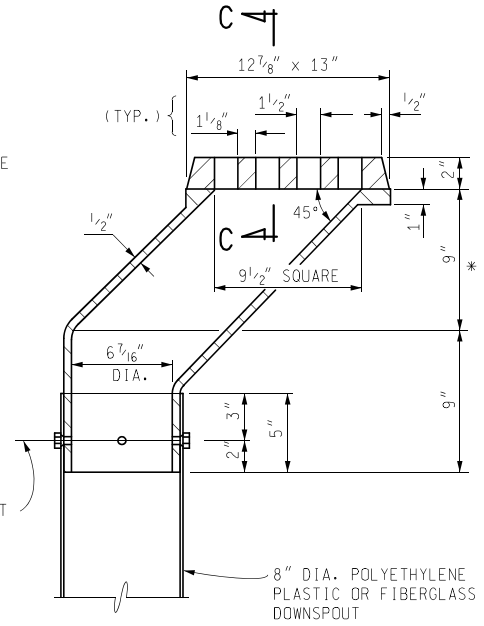


SECTION A-A (TYPE 1)

* TRANSITION SQUARE TO ROUND

Ø 4 - 1/2" Ø HOLES IN DRAIN CASTING TAPPED OVERSIZE TO ACCOMMODATE 1/2" Ø X 1 1/4" GALV. HEX CAP SCREWS WITH FLAT WASHERS.
Ø 4 - 9/16" Ø HOLES IN DOWNSPOUT

8" DIA. POLYETHYLENE PLASTIC OR FIBERGLASS DOWNSPOUT

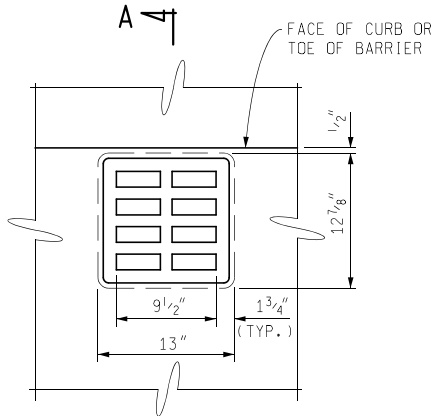


SECTION A-A (TYPE 2)

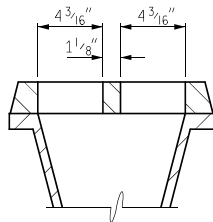
8" DIA. POLYETHYLENE PLASTIC OR FIBERGLASS DOWNSPOUT

DRAIN CASTING ASSEMBLY DETAILS

(BRACKETS NOT SHOWN)



PLAN OF DRAIN CASTING



SECTION C-C

NOTES:

USE GRAY IRON CASTINGS IN ACCORDANCE WITH STANDARD SPECIFICATIONS.

USE POLYETHYLENE PLASTIC PIPE OR FIBERGLASS-REINFORCED THERMOSETTING RESIN PIPE IN ACCORDANCE WITH THE STANDARD SPECIFICATIONS. USE ASTM DR 17 AS AN APPROVED ALTERNATE.

USE GALVANIZED STEEL BRACKETS IN ACCORDANCE WITH AASHTO M270 GRADE 36.

USE BOLTS (FASTENERS), NUTS, WASHERS AND INSERTS (TAPPED OVERSIZE) IN ACCORDANCE WITH 906.07 OF THE STANDARD SPECIFICATIONS. BOLTS AND WASHERS MAY BE STAINLESS STEEL SAE TYPE 304.



PREPARED BY
DESIGN DIVISION

DRAWN BY: B.L.T.

CHECKED BY: V.Z.

DEPARTMENT DIRECTOR
Paul C. Ajegba

APPROVED BY: Matthew J. Chynoweth, P.E. Matthew J. Chynoweth
Oct 14 2021 4:29 PM
DIRECTOR, BUREAU OF BRIDGES AND STRUCTURES

APPROVED BY: Gregg Brunner, P.E. Gregg Brunner
Oct 14 2021 12:30 PM
DIRECTOR, BUREAU OF FIELD SERVICES

APPROVED BY: Bradley C. Wiefelich Bradley C. Wiefelich
Oct 14 2021 10:59 AM
DIRECTOR, BUREAU OF DEVELOPMENT

MICHIGAN DEPARTMENT OF TRANSPORTATION
BUREAU OF DEVELOPMENT STANDARD PLAN FOR

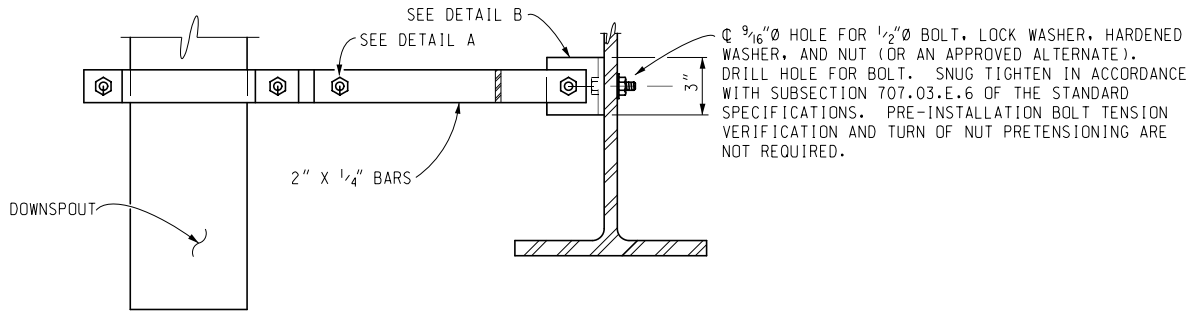
DRAIN CASTING ASSEMBLY DETAILS

4-7-2022
F.H.W.A. APPROVAL

9-9-2021
PLAN DATE

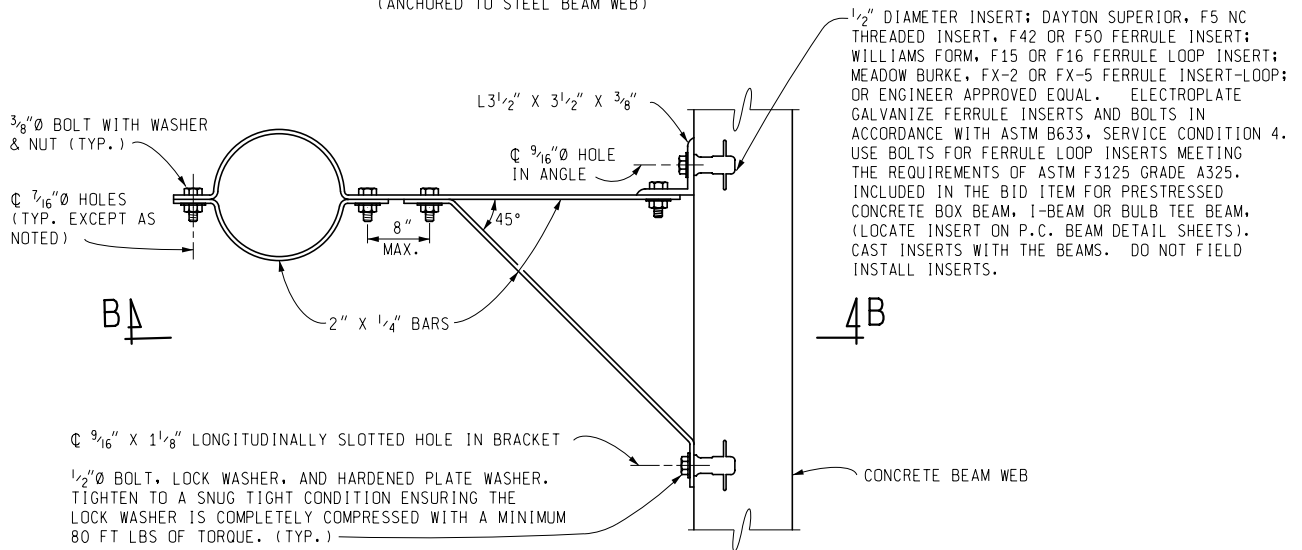
B-101-G

SHEET
1 OF 2



SECTION B-B

(ANCHORED TO STEEL BEAM WEB)

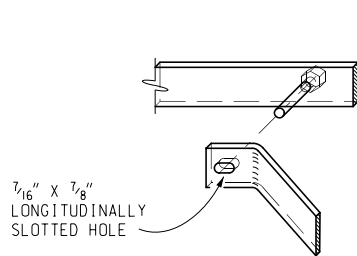


PLAN VIEW OF BRACKET

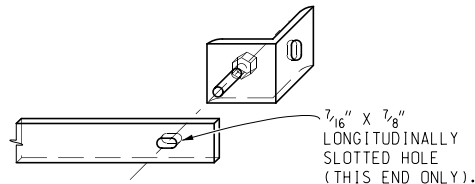
(ANCHORED TO CONCRETE BEAM WEB)

BRACKET DETAILS

(FOR CONCRETE OR STEEL BEAMS)



DETAIL A



DETAIL B

MICHIGAN DEPARTMENT OF TRANSPORTATION BUREAU OF DEVELOPMENT STANDARD PLAN FOR DRAIN CASTING ASSEMBLY DETAILS			
4-7-2022 F.H.W.A. APPROVAL	9-9-2021 PLAN DATE	B-101-G	SHEET 2 OF 2