

## ANCHOR BOLT ASSEMBLY DIMENSIONS

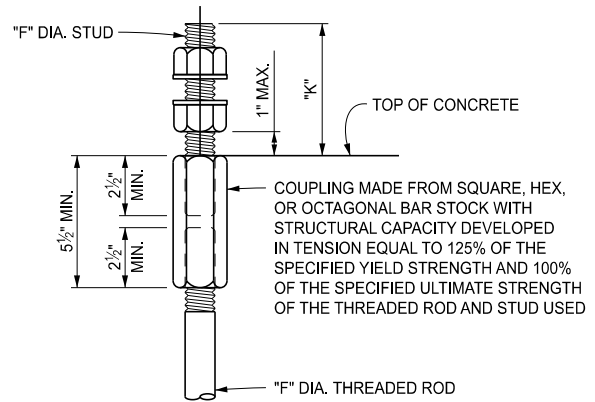
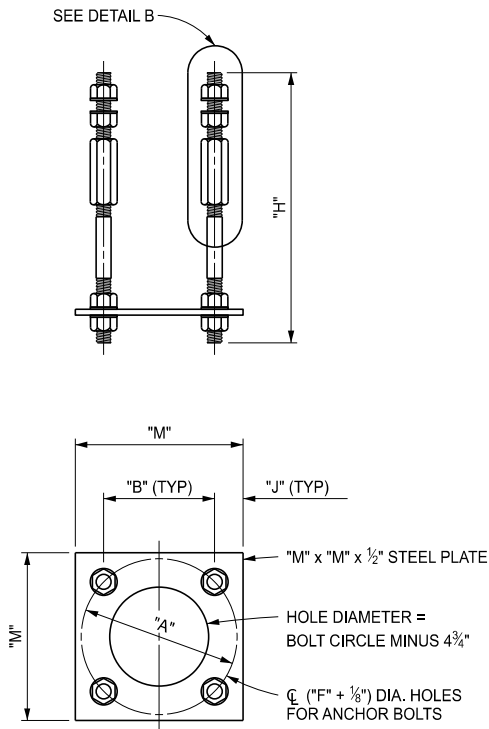
LIGHT STANDARD MOUNTING HEIGHT	BOLT CIRCLE "A"	"B"	ANCHOR BOLT DIAMETER "F"	"H"	"J"	STUD PROJECTION "K"	STUD LENGTH "L"	"M"
30' *	1'-3" (A)	10 <sup>5</sup> / <sub>8</sub> " (A)	1 <sup>1</sup> / <sub>2</sub> "	1'-9 <sup>3</sup> / <sub>4</sub> "	2 <sup>3</sup> / <sub>8</sub> "	5 <sup>1</sup> / <sub>2</sub> "	7 <sup>1</sup> / <sub>4</sub> "	1'-3 <sup>3</sup> / <sub>8</sub> " (A)
	1'-0" (S)	8 <sup>1</sup> / <sub>2</sub> " (S)						1'-1 <sup>1</sup> / <sub>4</sub> " (S)
30' **	1'-3" (A)	10 <sup>5</sup> / <sub>8</sub> " (A)	1 <sup>1</sup> / <sub>2</sub> "	1'-10 <sup>1</sup> / <sub>2</sub> "	2 <sup>3</sup> / <sub>8</sub> "	5 <sup>1</sup> / <sub>2</sub> "	8"	1'-3 <sup>3</sup> / <sub>8</sub> " (A)
	1'-0" (S)	8 <sup>1</sup> / <sub>2</sub> " (S)						1'-1 <sup>1</sup> / <sub>4</sub> " (S)
40' **	1'-4" (A)	11 <sup>3</sup> / <sub>8</sub> " (A)	1 <sup>3</sup> / <sub>4</sub> "	1'-10 <sup>1</sup> / <sub>2</sub> "	2 <sup>7</sup> / <sub>8</sub> "	5 <sup>1</sup> / <sub>2</sub> "	8"	1'-5 <sup>1</sup> / <sub>8</sub> " (A)
	1'-3" (S)	10 <sup>5</sup> / <sub>8</sub> " (S)						1'-4 <sup>3</sup> / <sub>8</sub> " (S)
45' **	1'-5" (A)	1'-0" (A)	1 <sup>3</sup> / <sub>4</sub> "	1'-10 <sup>1</sup> / <sub>2</sub> "	2 <sup>7</sup> / <sub>8</sub> "	5 <sup>1</sup> / <sub>2</sub> "	8"	1'-5 <sup>3</sup> / <sub>4</sub> " (A)
	1'-6" (S)	1'-0 <sup>3</sup> / <sub>4</sub> " (S)						1'-6 <sup>1</sup> / <sub>2</sub> " (S)

\* UP TO 15' SINGLE OR DOUBLE BRACKET ARM

\*\* UP TO 17' SINGLE OR DOUBLE BRACKET ARM

ANCHOR BOLTS (4 REQUIRED):  
 "F" DIA. x 1'-2" THREADED ROD AND "F" DIA. x "L" STUD WITH 4 NUTS, 4 WASHERS, AND ONE COUPLING.

(A) = DIMENSION CORRESPONDS TO ALUMINUM  
 (S) = DIMENSION CORRESPONDS TO STEEL



DETAIL B

### LIGHT STANDARD ANCHOR BOLT ASSEMBLY

APPROVED BY: \_\_\_\_\_  
 DIRECTOR, BUREAU OF BRIDGES AND STRUCTURES

APPROVED BY: \_\_\_\_\_  
 DIRECTOR, BUREAU OF FIELD SERVICES

APPROVED BY: \_\_\_\_\_  
 DIRECTOR, BUREAU OF DEVELOPMENT



DEPARTMENT DIRECTOR  
 BRADLEY C. WIEFERICH, PE

#### STANDARD PLAN FOR MOLDING, BEVEL, LIGHT STD. ANCHOR BOLT ASSEMBLY AND NAME PLATE DETAILS

(SPECIAL DETAIL) 12/08/2023  
 FHWA APPROVAL PLAN DATE

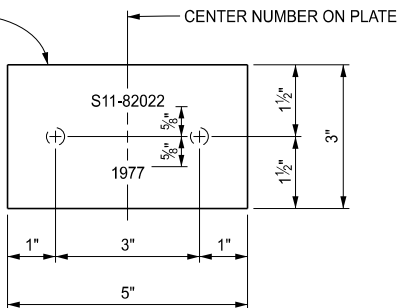
**B-103-F**

SHEET  
 1 OF 2

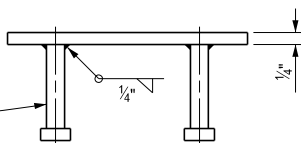
ALUMINUM PLATE  
6061-0/6061-T6  
OR APPROVED EQUAL

STRUCTURE NUMBER

YEAR BUILT



3/8" x 2"  
ALUMINUM BOLT OR  
APPROVED STUD



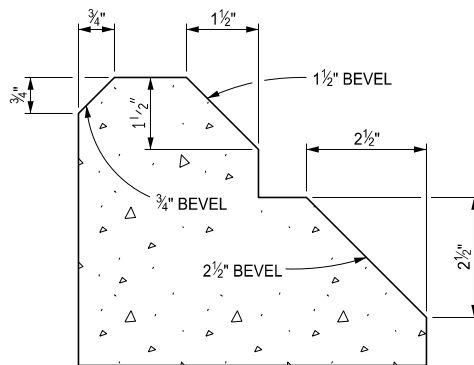
NAME PLATE

NOTES:

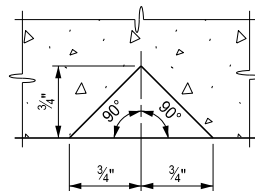
DIE STAMP - 1/4" MINIMUM

LETTERS AND NUMBERS SHALL BE 1/4" MINIMUM OR 3/8" MAXIMUM HEIGHT.

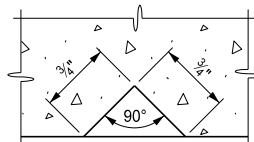
DATE SHALL BE YEAR THAT SUPERSTRUCTURE WAS COMPLETED.



BEVEL DETAILS



DOUBLE 3/4" Δ MOLDING



3/4" Δ MOLDING

MOLDING DETAILS

NOTES:

DETAILS SHOWN ARE ACCORDING TO THE AASHTO SPECIFICATIONS.

LIGHT STANDARD ANCHOR BOLT ASSEMBLY STEEL PLATE SHALL BE ASTM A36.

ALL STEEL SHALL BE HOT-DIP GALVANIZED ACCORDING TO THE STANDARD SPECIFICATIONS FOR CONSTRUCTION.

ANCHOR BOLTS, WASHERS, COUPLINGS AND NUTS FOR LIGHT STANDARDS SHALL BE ACCORDING TO THE STANDARD SPECIFICATIONS FOR CONSTRUCTION.

THE COUPLING SHALL BE RETAPPED AFTER GALVANIZING IN THE SAME MANNER AS SPECIFIED FOR NUTS.

ALUMINUM PLATE SHALL MEET THE REQUIREMENTS OF ASTM B209.

ALUMINUM BOLT SHALL MEET THE REQUIREMENTS OF ASTM F468.

INTERNAL DAMPENER FOR LIGHT STANDARDS SHALL BE INCLUDED AS RECOMMENDED BY THE MANUFACTURER.



DEPARTMENT DIRECTOR  
BRADLEY C. WIEFERICH, PE

STANDARD PLAN FOR  
MOLDING, BEVEL, LIGHT STD. ANCHOR BOLT ASSEMBLY  
AND NAME PLATE DETAILS

(SPECIAL DETAIL)  
FHWA APPROVAL

12/08/2023  
PLAN DATE

B-103-F

SHEET  
2 OF 2