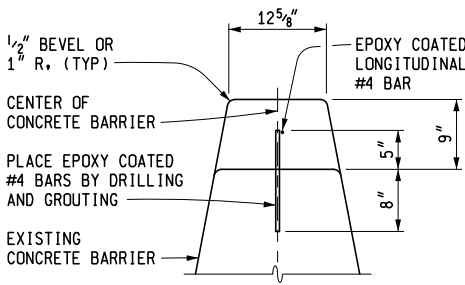
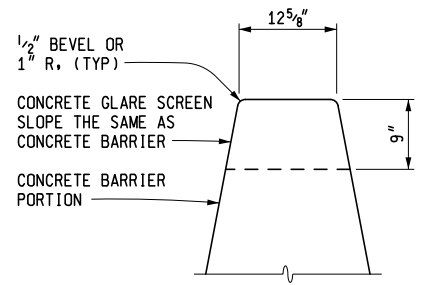


CONCRETE GLARE SCREEN REINFORCED WITH "D" BARS

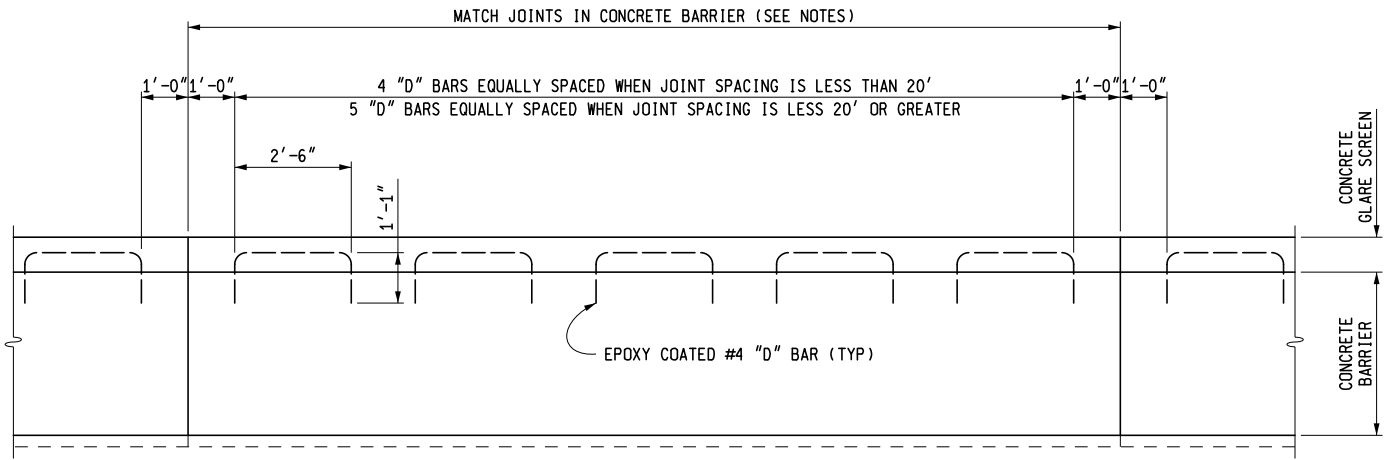


CONCRETE GLARE SCREEN REINFORCED WITH DOWELS AND LONGITUDINAL BARS

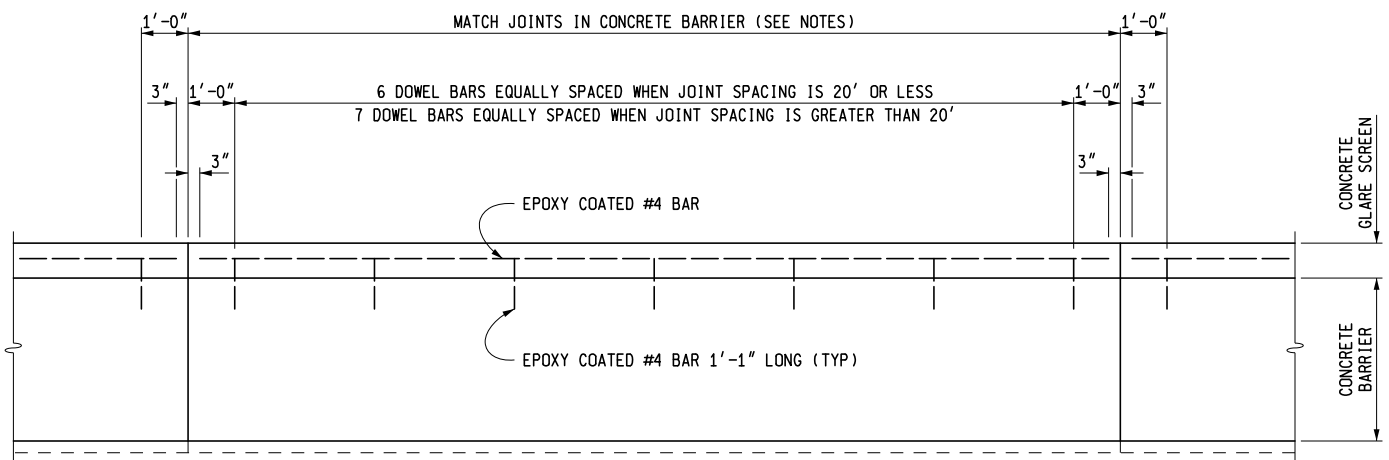


THIS CROSS-SECTION SHALL BE USED ON ALL NEW CONSTRUCTION WHERE CONCRETE GLARE SCREEN IS PROPOSED AND POURED MONOLITHICALLY WITH CONCRETE BARRIER. (NO STEEL REINFORCEMENT IS REQUIRED.) (SEE NOTES ON SHEET 3 OF THIS PLAN.)

CONCRETE GLARE SCREEN CROSS - SECTION



ELEVATION VIEW OF CONCRETE GLARE SCREEN REINFORCED WITH "D" BARS



ELEVATION VIEW OF CONCRETE GLARE SCREEN REINFORCED WITH DOWELS AND LONGITUDINAL BARS



PREPARED BY DESIGN DIVISION

DRAWN BY: B.L.T.

CHECKED BY: W.K.P.

DEPARTMENT DIRECTOR  
Kirk T. Steudle

APPROVED BY: Kimberly Avery  
DIRECTOR, BUREAU OF FIELD SERVICES

APPROVED BY: Bradley C. Wiefelrich  
DIRECTOR, BUREAU OF DEVELOPMENT

Digitally signed by Kimberly Avery  
DN: o=State of Michigan,  
email=averykim@michigan.gov,  
cn=Kimberly Avery  
Date: 2018.04.03 11:04:26 -0400

Bradley C. Wiefelrich  
Apr 8 2018 10:37 AM  
cosig

MICHIGAN DEPARTMENT OF TRANSPORTATION  
BUREAU OF DEVELOPMENT STANDARD PLAN FOR

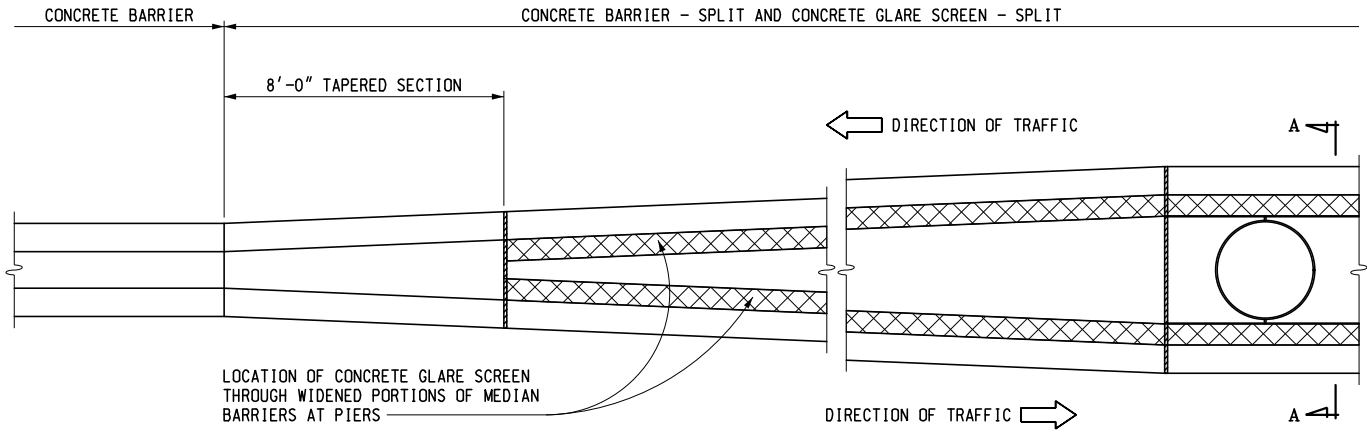
CONCRETE GLARE SCREEN

3-29-2018  
F.H.W.A. APPROVAL

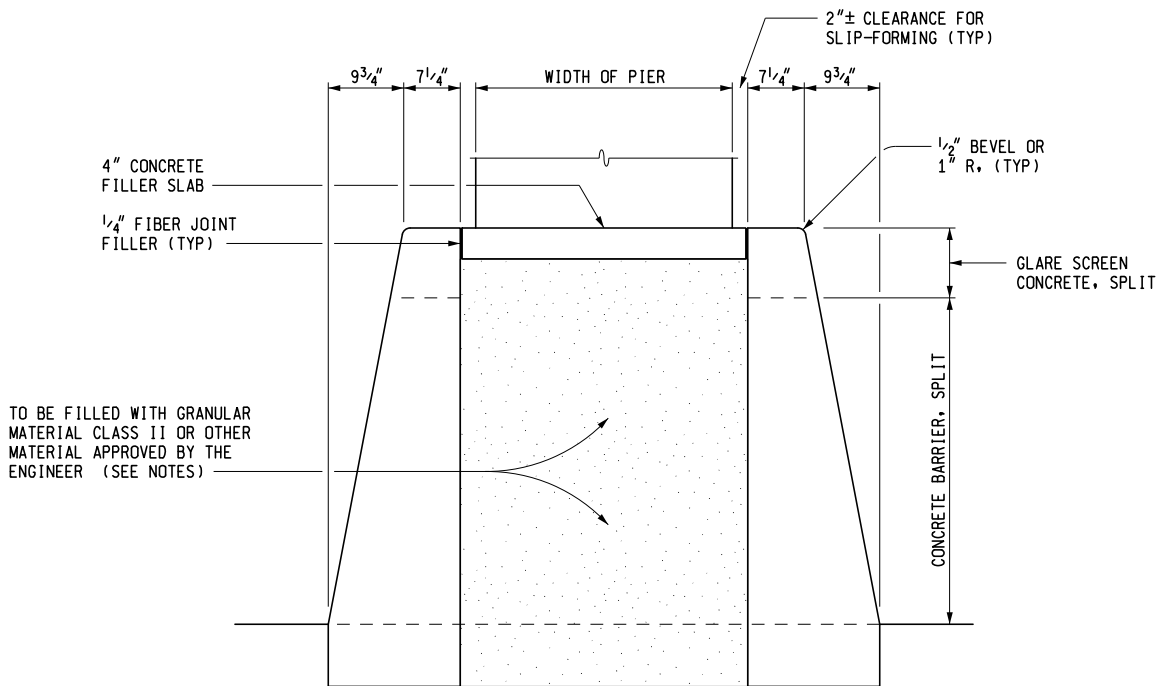
3-22-2017  
PLAN DATE

R-76-E

SHEET 1 OF 3



PLAN VIEW AT BRIDGE PIERS



SECTION A-A

MICHIGAN DEPARTMENT OF TRANSPORTATION  
BUREAU OF DEVELOPMENT STANDARD PLAN FOR

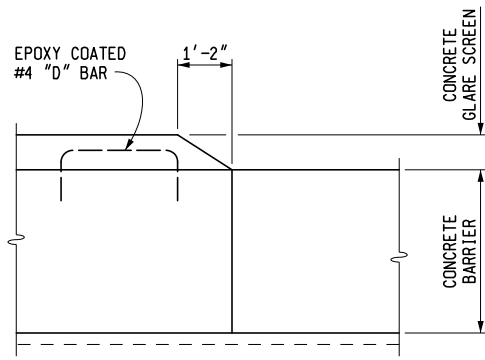
CONCRETE GLARE SCREEN

3-29-2018  
F.H.W.A. APPROVAL

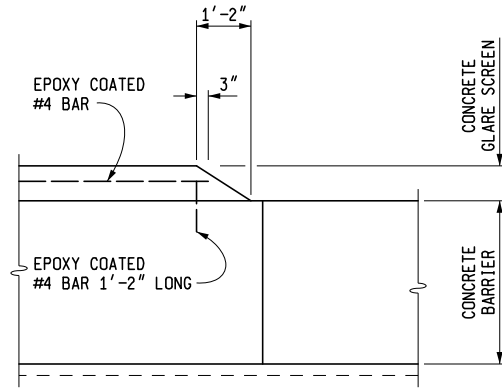
3-22-2017  
PLAN DATE

R-76-E

SHEET  
2 OF 3



ELEVATION WHEN "D" BARS ARE USED



ELEVATION WHEN LONGITUDINAL BAR AND DOWEL BARS ARE USED

### CONCRETE GLARE SCREEN ENDINGS

(USE SAME ENDING WHEN REINFORCEMENT IS OMITTED)

**NOTES:**

CONTRACTION JOINTS SHALL BE FORMED AND EDGED TO A DEPTH OF AT LEAST 1" ON BOTH SIDES.

MATCH CONTRACTION JOINTS IN CONCRETE GLARE SCREEN WITH PLANE OF WEAKNESS JOINTS IN CONCRETE BARRIER, AND MATCH EXPANSION JOINTS IN CONCRETE GLARE SCREEN WITH EXPANSION JOINTS IN CONCRETE BARRIER.

WHERE A CRACK IN THE EXISTING CONCRETE BARRIER APPEARS TO BE WORKING AS A JOINT, A CONTRACTION JOINT SHALL BE PLACED IN THE CONCRETE GLARE SCREEN DIRECTLY OVER THE CRACK, AND IF STEEL REINFORCEMENT GOES THROUGH THE JOINT, THE STEEL BAR SHALL BE CUT AT THE JOINT (NO GAP IN THE STEEL IS REQUIRED). IF THE JOINT OVER THE CRACK IS WITHIN 4'-0" OF WHERE THE NORMAL JOINT WOULD BE LOCATED, THE NORMAL JOINT SHALL BE OMITTED.

EXPANSION JOINTS SHALL BE CONSTRUCTED BY INSERTING A 1" FIBER JOINT FILLER IN LINE WITH EXPANSION JOINTS IN THE CONCRETE BARRIER. ALL EDGES AND JOINTS SHALL BE ROUNDED, EXCEPT THE BASE WHEN IT IS LESS THAN THE WIDTH OF THE CONCRETE BARRIER.

WHEN THE LONGITUDINAL BAR IS FED IN CONTINUOUSLY IN LIEU OF TYING TO THE DOWEL BAR, CONTRACTION JOINTS SHALL BE SAWED, CUTTING REINFORCING STEEL, AFTER CONCRETE HAS BEEN ALLOWED TO HARDEN.

SIDE SLOPE OF THE CONCRETE GLARE SCREEN SHALL MATCH SIDE SLOPE OF ADJOINING CONCRETE BARRIER.

REINFORCEMENT IN CONCRETE GLARE SCREEN SHALL BE GRADE 40 STEEL.

KINKED LONGITUDINAL BARS SHALL NOT BE USED.

WHEN CONCRETE GLARE SCREEN IS INCLUDED IN THE SAME CONTRACT WITH CONCRETE BARRIER AND CONCRETE BARRIER, SPLIT, THE TWO STRUCTURES SHALL BE CAST MONOLITHICALLY; NO STEEL REINFORCEMENT IS REQUIRED. WHEN CONCRETE GLARE SCREEN IS TO BE PLACED ON CONCRETE BARRIERS HAVING VARIABLE HEIGHT, THE CONTRACTOR WILL HAVE THE OPTION OF CASTING MONOLITHICALLY OR SEPARATELY. WHEN CAST SEPARATELY, THE GLARE SCREEN WILL BE REINFORCED AS SPECIFIED ON SHEET 1 OF THIS PLAN.

MICHIGAN DEPARTMENT OF TRANSPORTATION  
BUREAU OF DEVELOPMENT STANDARD PLAN FOR

## CONCRETE GLARE SCREEN

3-29-2018 F.H.W.A. APPROVAL	3-22-2017 PLAN DATE	R-76-E	SHEET 3 OF 3
--------------------------------	------------------------	--------	-----------------