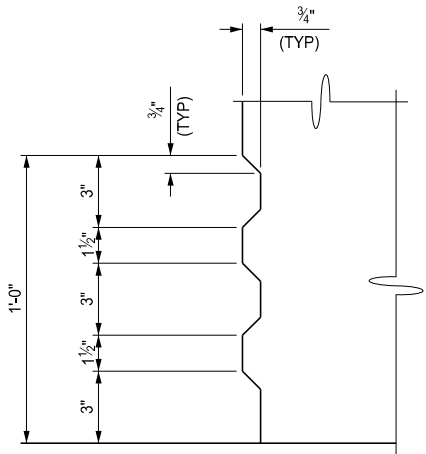


FLUSH MOUNT BRIDGE RAILING



AESTHETIC TREATMENT DETAIL

NOTES:

ALL WORK AND MATERIAL SHALL BE IN ACCORDANCE WITH THE STANDARD SPECIFICATIONS FOR CONSTRUCTION.

DETAILS SHOWN ARE IN ACCORDANCE WITH AASHTO SPECIFICATIONS.

BRIDGE RAILING USED WITH SIDEWALK SHALL BE USED ONLY WITH THE SIDEWALK CONFIGURATION (PROFILE) SHOWN ON THIS STANDARD PLAN.

NO SLIP FORMING OF "BRIDGE RAILING, AESTHETIC PARAPET TUBE" SHALL BE ALLOWED. RAILING SHALL BE CAST IN PLACE.

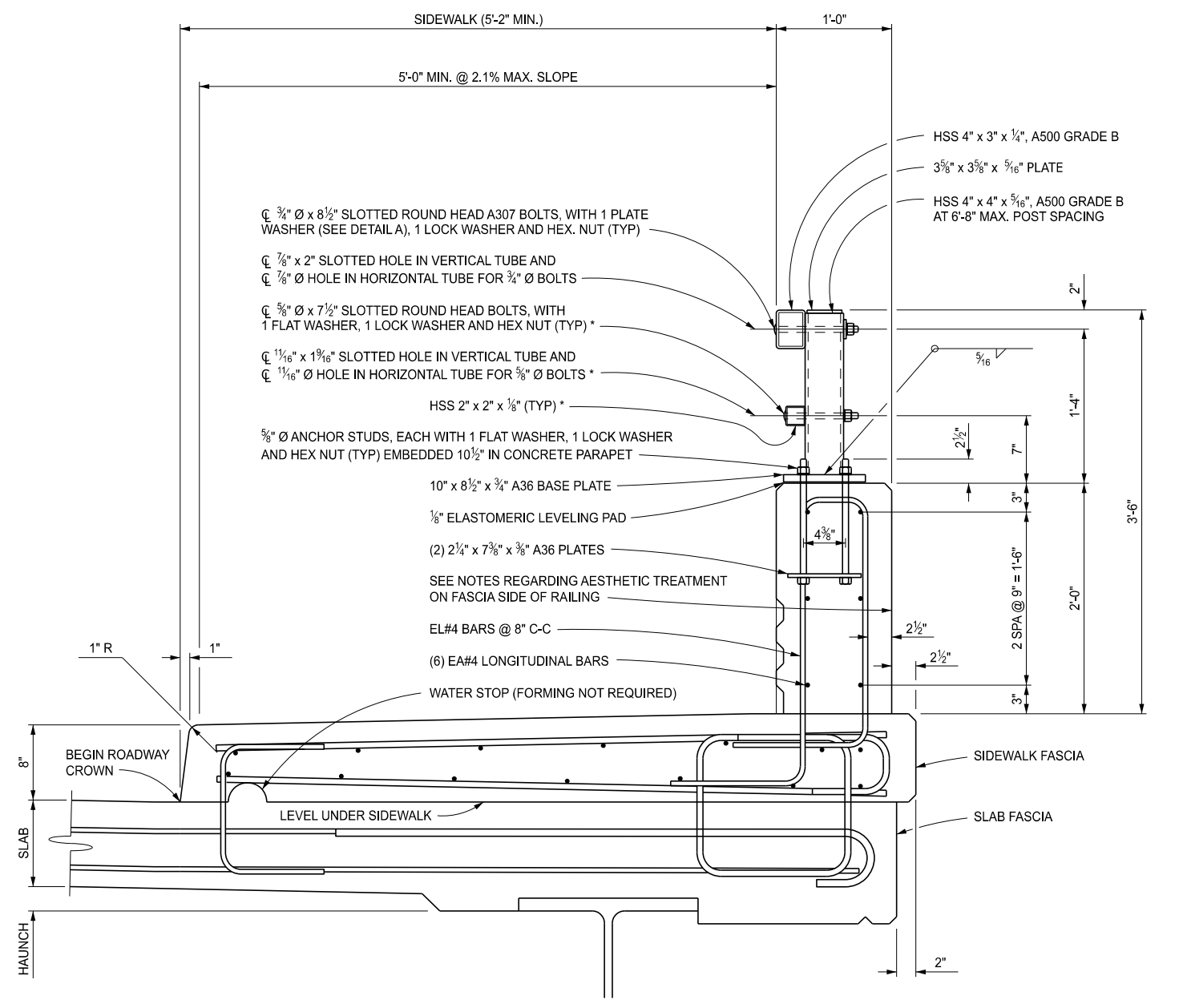
THE LIGHT STANDARD ANCHOR BOLT ASSEMBLY IS INCLUDED IN THE BID ITEM "BRIDGE RAILING, AESTHETIC PARAPET TUBE". SEE STANDARD PLAN B-103-SERIES.

FOR LIGHT STANDARD ANCHOR BOLT ASSEMBLY DETAILS, IF BRIDGE RAILING, AESTHETIC PARAPET TUBE IS PLACED FLUSH ON THE BRIDGE DECK (WITHOUT SIDEWALK), THE LIGHTING CONDUIT SHALL NOT BE PLACED IN THE RAILING.

A RUBBED FINISH ON THE VERTICAL AND TOP CONCRETE SURFACES OF THE PARAPET RAILING IS REQUIRED.

AESTHETIC TREATMENT AS DETAILED ON THIS SHEET SHALL BE ADDED TO THE FASCIA SIDE OF RAILING IF NO AESTHETIC TREATMENT IS DETAILED ON THE PLAN SHEETS AND SHALL BE INCLUDED IN THE BID ITEM "BRIDGE RAILING, AESTHETIC PARAPET TUBE". AESTHETIC TREATMENT DETAILED ON THE PLAN SHEETS MAY BE UP TO 1" IN CONCRETE DEPTH WITHOUT MODIFICATION TO THE RAILING WIDTH AND SHALL BE INCLUDED IN THE BID ITEM "BRIDGE RAILING, AESTHETIC PARAPET TUBE". AESTHETIC TREATMENT REQUIRING ADDITIONAL RAILING WIDTH OR THE USE OF ELASTOMERIC FORM LINERS SHALL BE PAID FOR SEPARATELY.

* THE HSS 2" x 2" x 1/8" RAIL, SLOTTED HOLE, AND 5/8" BOLT ARE NOT REQUIRED WHEN RAILING IS USED IN COMBINATION WITH PEDESTRIAN FENCING (SEE STANDARD PLAN B-41-SERIES).



BRIDGE RAILING WITH SIDEWALK

APPROVED BY: _____
DIRECTOR, BUREAU OF BRIDGES AND STRUCTURES

APPROVED BY: _____
DIRECTOR, BUREAU OF FIELD SERVICES

APPROVED BY: _____
DIRECTOR, BUREAU OF DEVELOPMENT



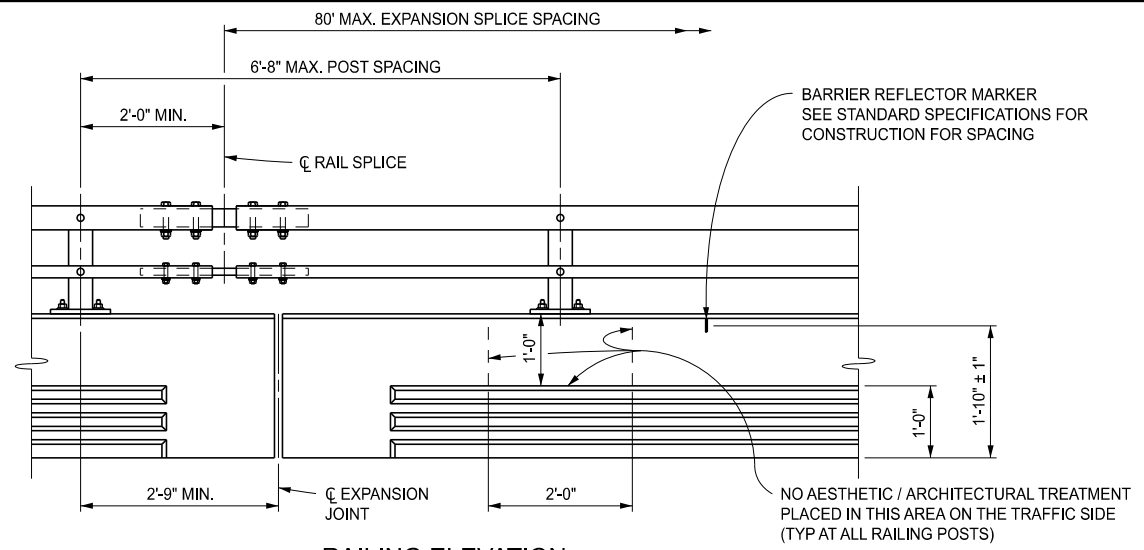
STANDARD PLAN FOR
BRIDGE RAILING, AESTHETIC PARAPET TUBE

(SPECIAL DETAIL)	06/24/2024	B-25-L	SHEET 1 OF 8
FHWA APPROVAL	PLAN DATE		

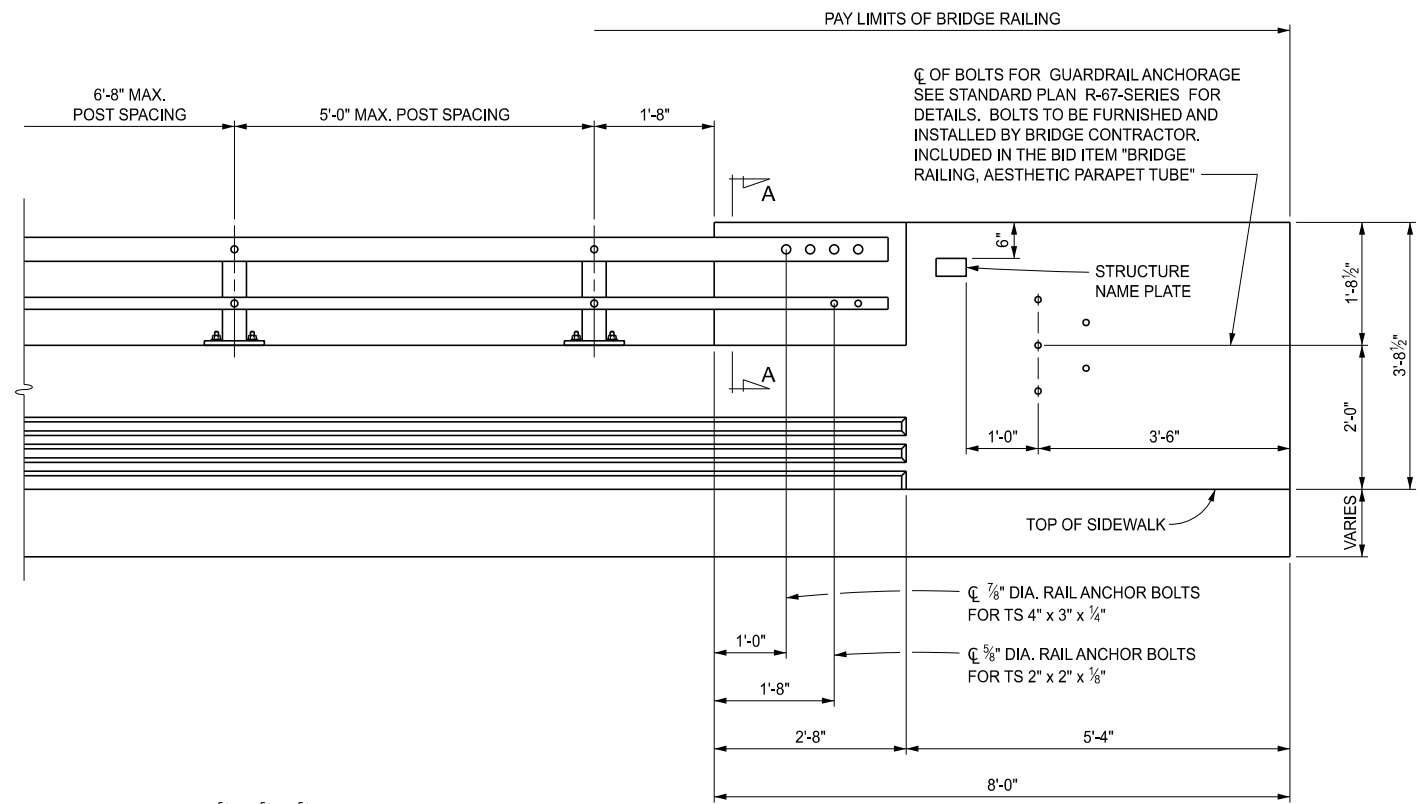


STANDARD PLAN FOR
BRIDGE RAILING, AESTHETIC PARAPET TUBE

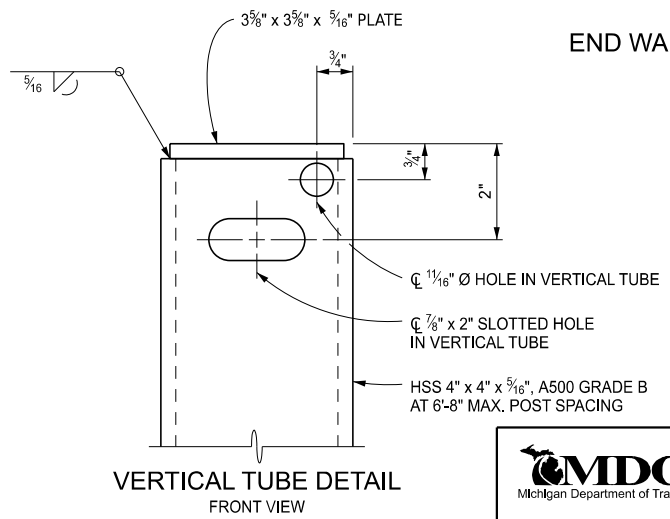
(SPECIAL DETAIL)	06/24/2024	B-25-L	SHEET 2 OF 8
FHWA APPROVAL	PLAN DATE		



RAILING ELEVATION

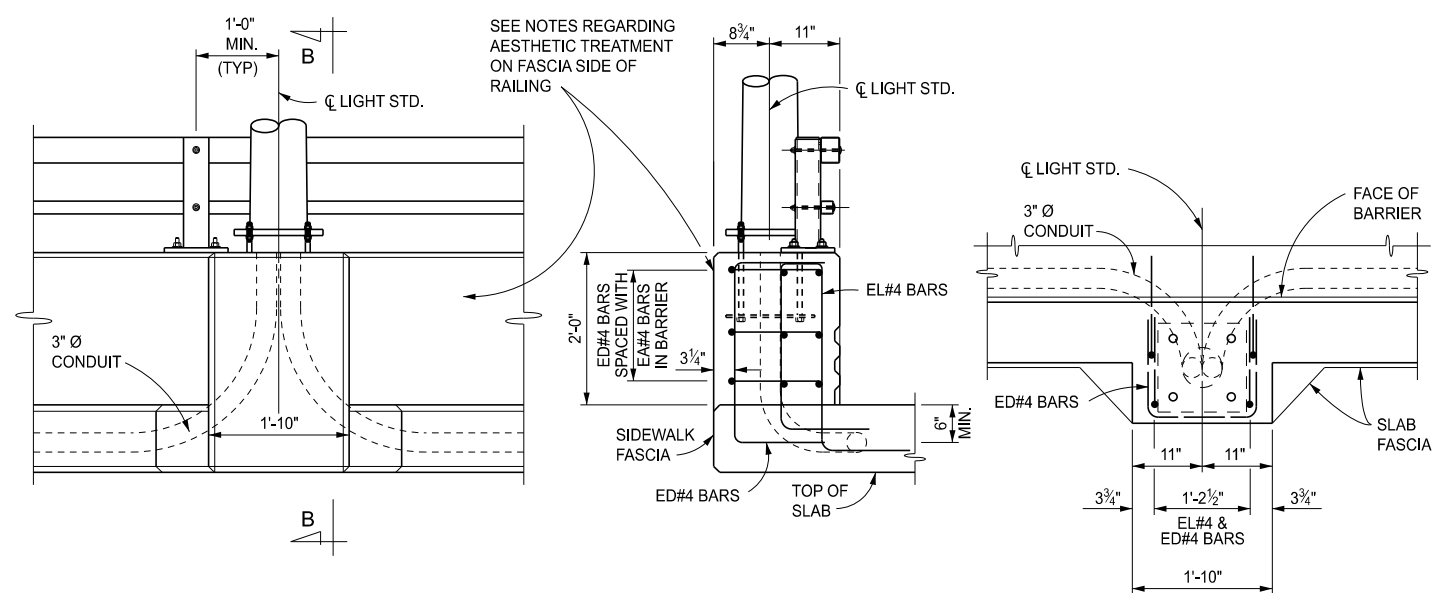


END WALL ELEVATION



VERTICAL TUBE DETAIL
FRONT VIEW

 STANDARD PLAN FOR BRIDGE RAILING, AESTHETIC PARAPET TUBE			
 DEPARTMENT DIRECTOR BRADLEY C. WIEFERICH, PE	(SPECIAL DETAIL) FHWA APPROVAL	06/24/2024 PLAN DATE	B-25-L
		SHEET 3 OF 8	

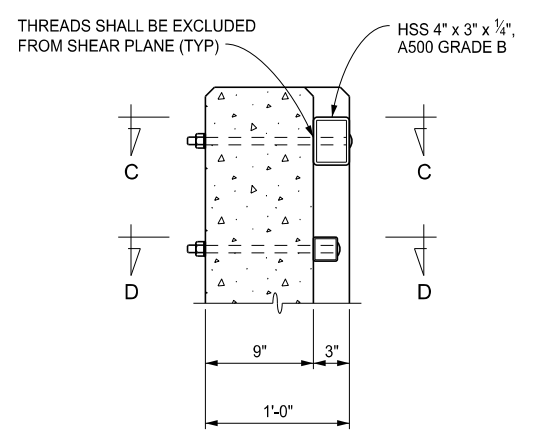


ELEVATION VIEW

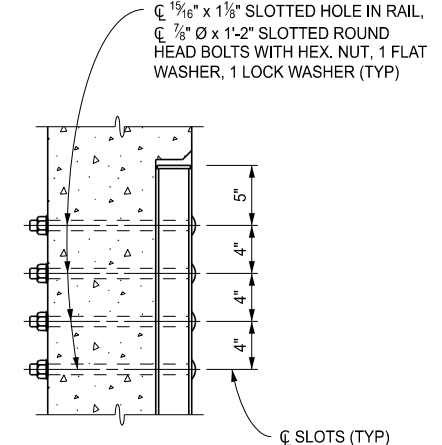
SECTION B-B

PLAN VIEW

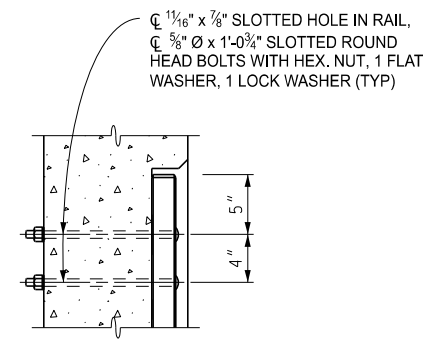
LIGHT STANDARD DETAILS



SECTION A-A



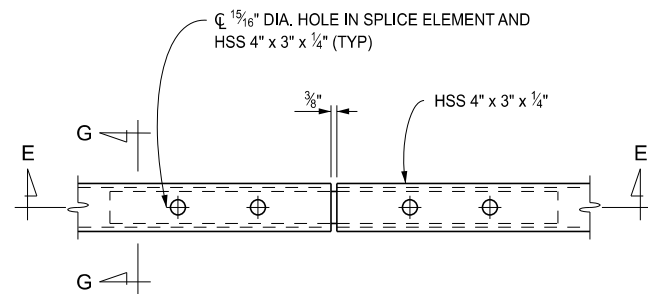
SECTION C-C



SECTION D-D

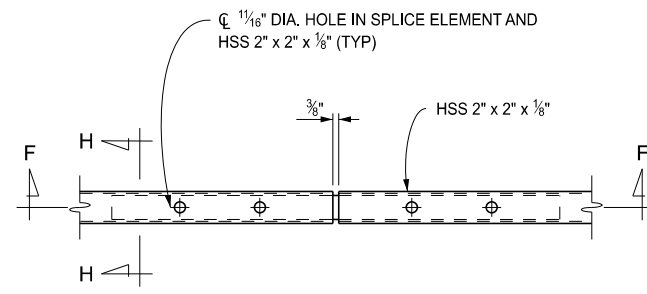
 STANDARD PLAN FOR BRIDGE RAILING, AESTHETIC PARAPET TUBE			
 DEPARTMENT DIRECTOR BRADLEY C. WIEFERICH, PE	(SPECIAL DETAIL) FHWA APPROVAL	06/24/2024 PLAN DATE	B-25-L
		SHEET 4 OF 8	

SECT



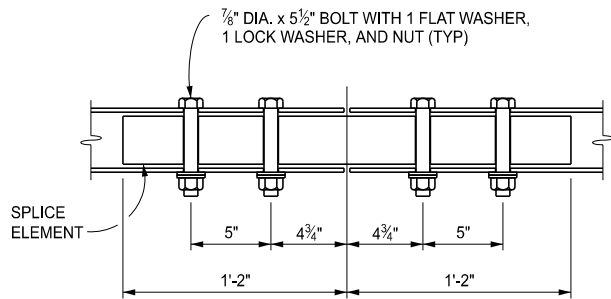
PLAN

HSS 4" x 3" x 1/4"



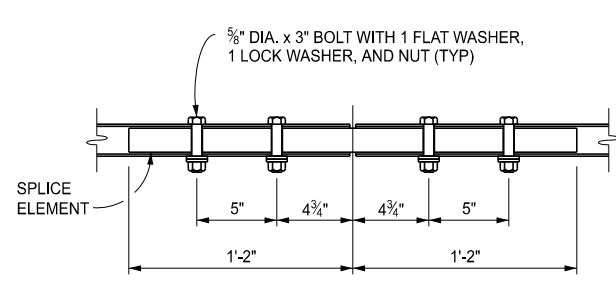
PLAN

HSS 2" x 2" x 1/8"



SECTION E-E

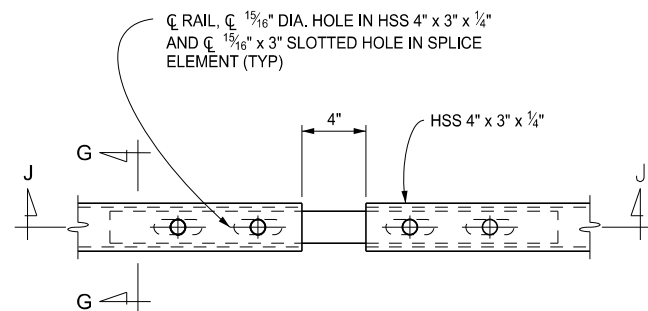
HSS 4" x 3" x 1/4"



SECTION F-F

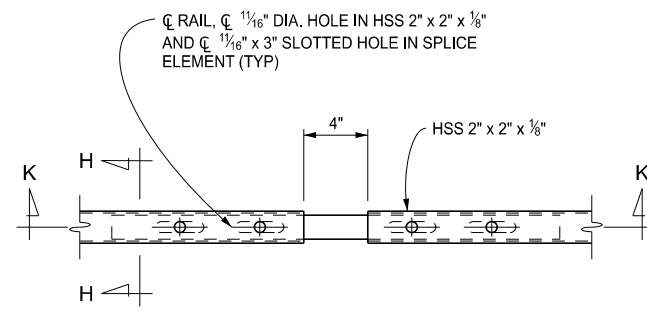
HSS 2" x 2" x 1/8"

FIXED SPLICE DETAILS



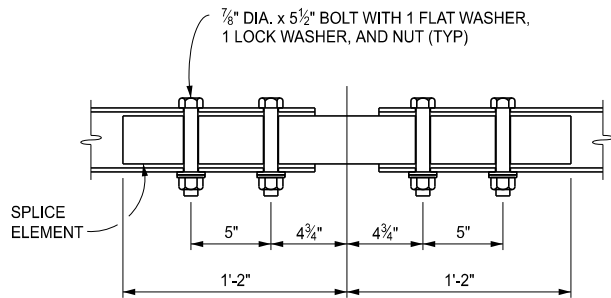
PLAN

HSS 4" x 3" x 1/4"



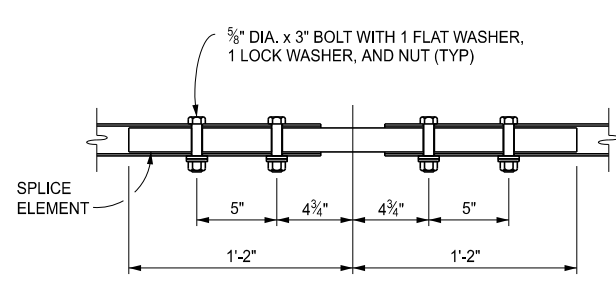
PLAN

HSS 2" x 2" x 1/8"



SECTION J-J

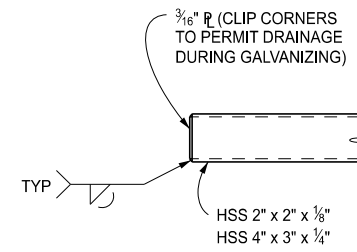
HSS 4" x 3" x 1/4"



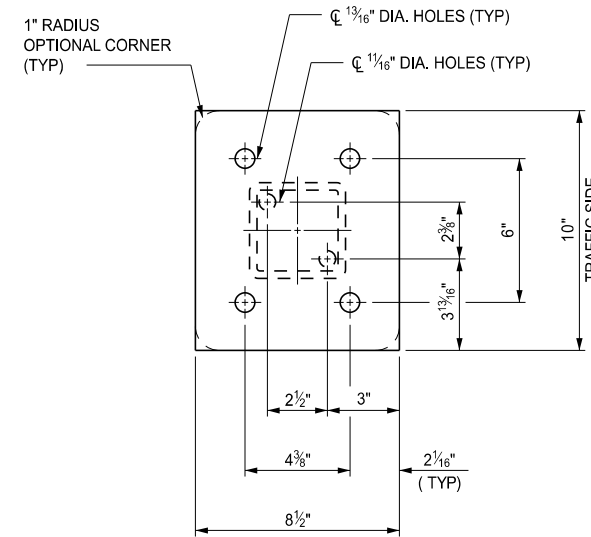
SECTION K-K

HSS 2" x 2" x 1/8"

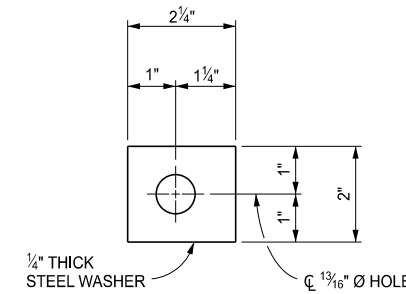
EXPANSION SPLICE DETAILS



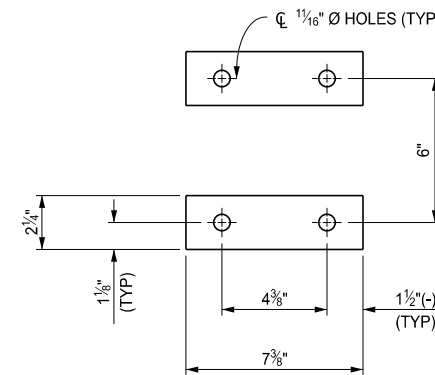
END OF RAIL



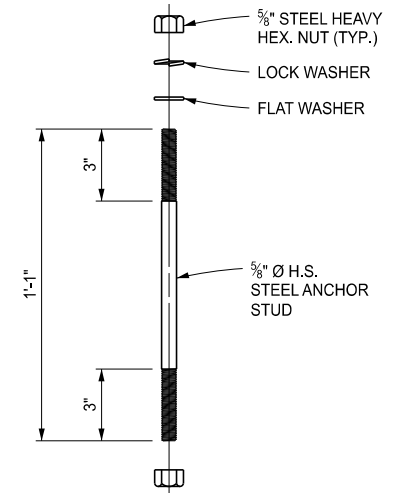
EXTERIOR BASE PLATE



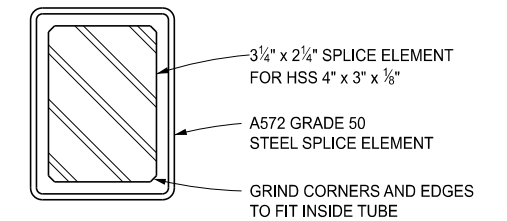
DETAIL A



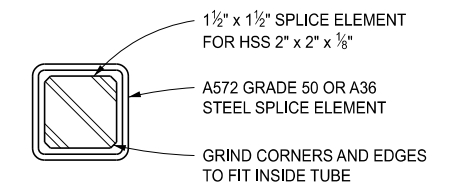
EMBEDDED ANCHOR STUD PLATES



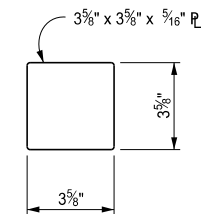
ANCHOR STUD DETAIL



SECTION G-G



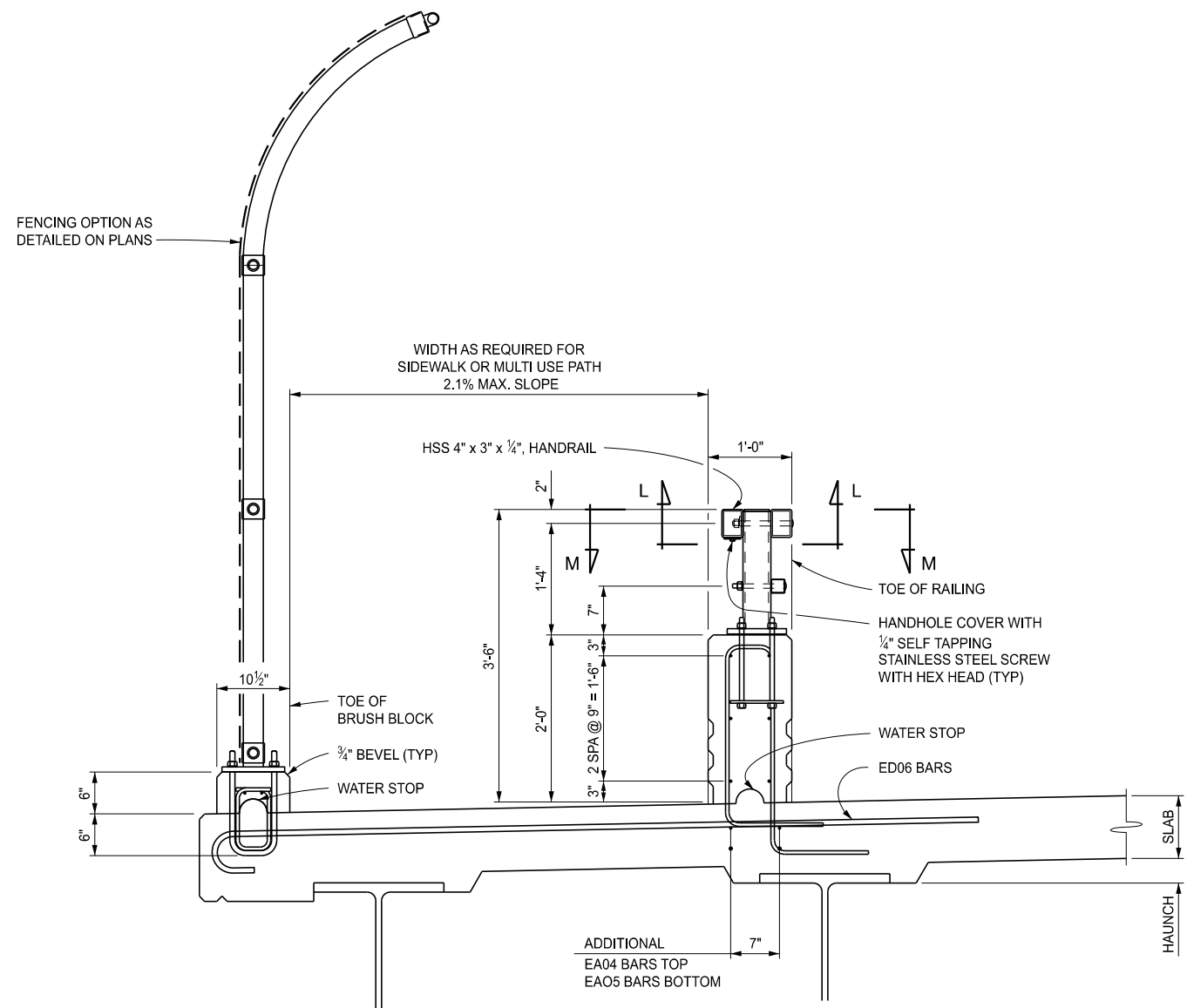
SECTION H-H



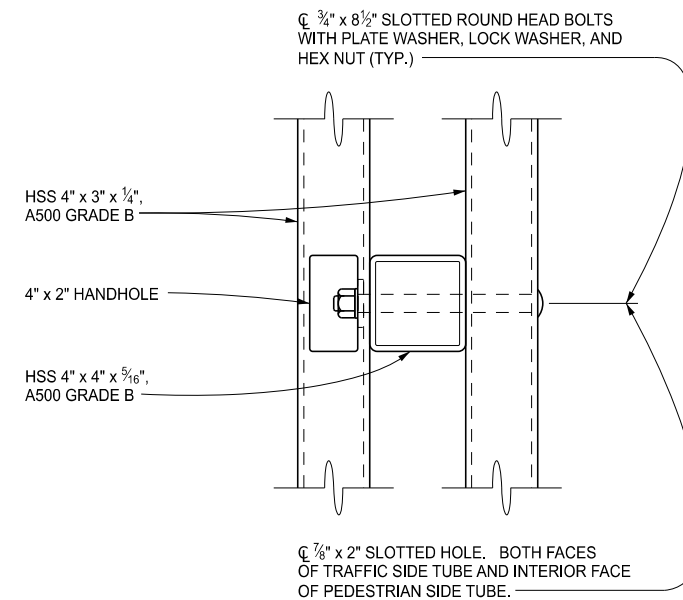
POST COVER PLATE

	STANDARD PLAN FOR BRIDGE RAILING, AESTHETIC PARAPET TUBE			
	(SPECIAL DETAIL) FHWA APPROVAL	06/24/2024 PLAN DATE	B-25-L	SHEET 5 OF 8

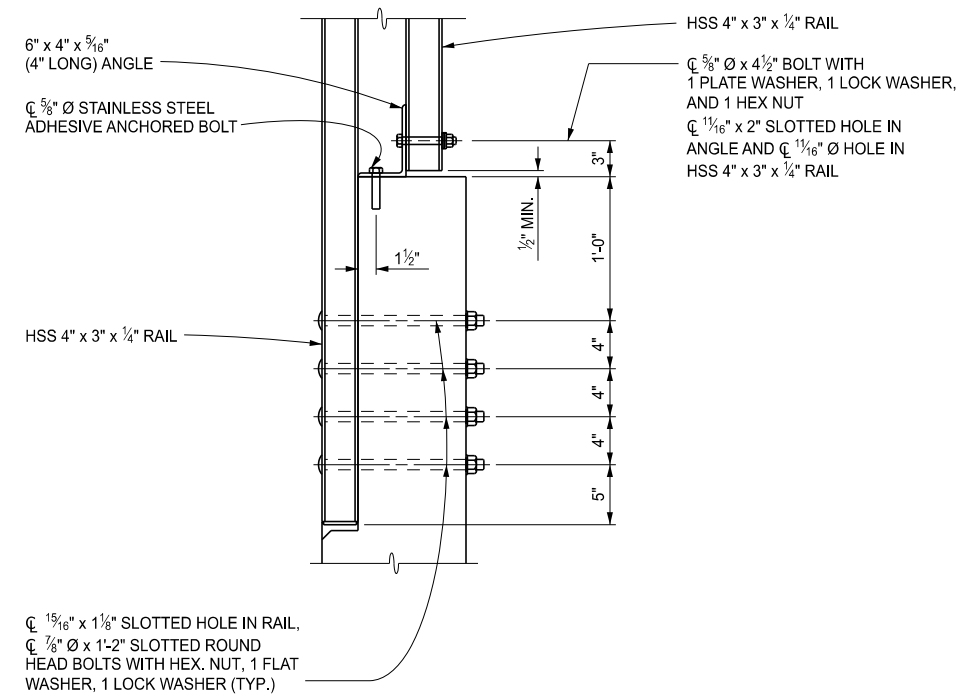
	STANDARD PLAN FOR BRIDGE RAILING, AESTHETIC PARAPET TUBE			
	(SPECIAL DETAIL) FHWA APPROVAL	06/24/2024 PLAN DATE	B-25-L	SHEET 6 OF 8



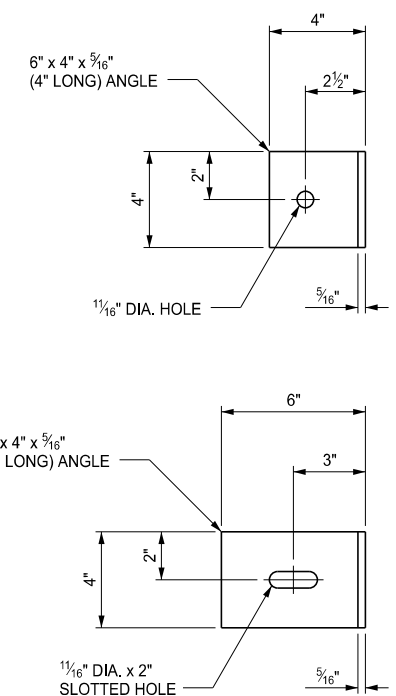
SECTION WITH PEDESTRIAN / MULTI USE PATH



SECTION L-L



SECTION M-M



	STANDARD PLAN FOR BRIDGE RAILING, AESTHETIC PARAPET TUBE			
	(SPECIAL DETAIL) FHWA APPROVAL	06/24/2024 PLAN DATE	B-25-L	SHEET 7 OF 8

	STANDARD PLAN FOR BRIDGE RAILING, AESTHETIC PARAPET TUBE			
	(SPECIAL DETAIL) FHWA APPROVAL	06/24/2024 PLAN DATE	B-25-L	SHEET 8 OF 8

SECT