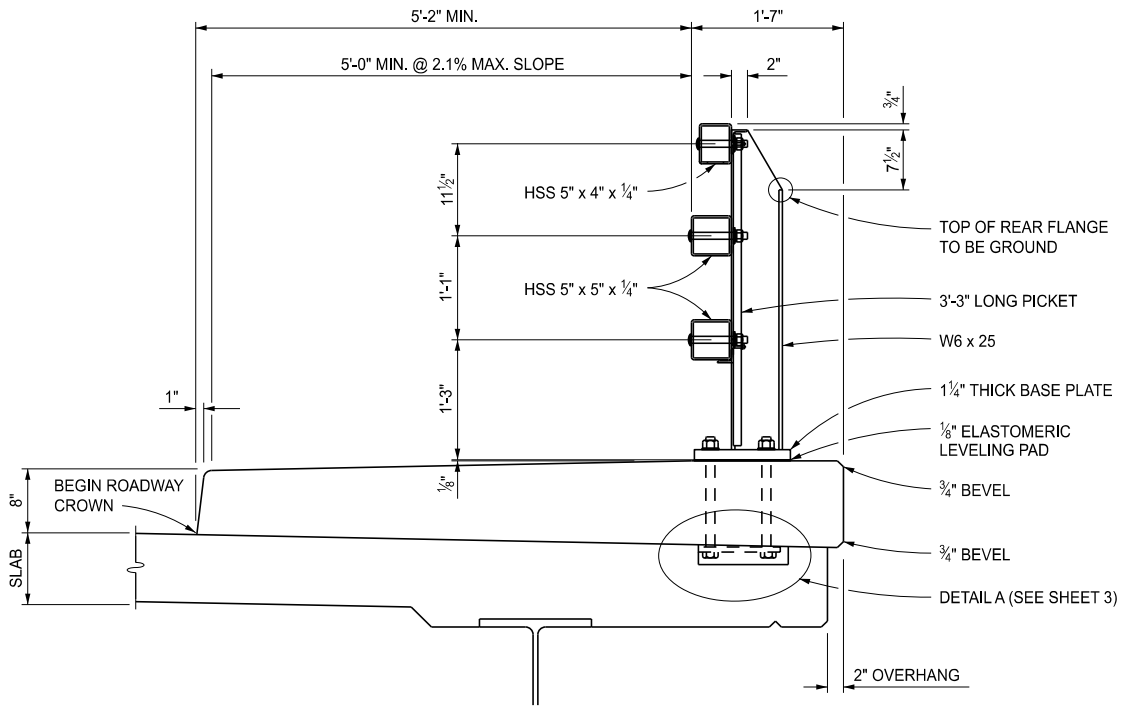


SECTION THROUGH RAILING WITH BRUSH BLOCK



SECTION THROUGH RAILING WITH SIDEWALK

APPROVED BY: _____
DIRECTOR, BUREAU OF BRIDGES AND STRUCTURES

APPROVED BY: _____
DIRECTOR, BUREAU OF FIELD SERVICES

APPROVED BY: _____
DIRECTOR, BUREAU OF DEVELOPMENT



DEPARTMENT DIRECTOR
BRADLEY C. WIEFERICH, PE

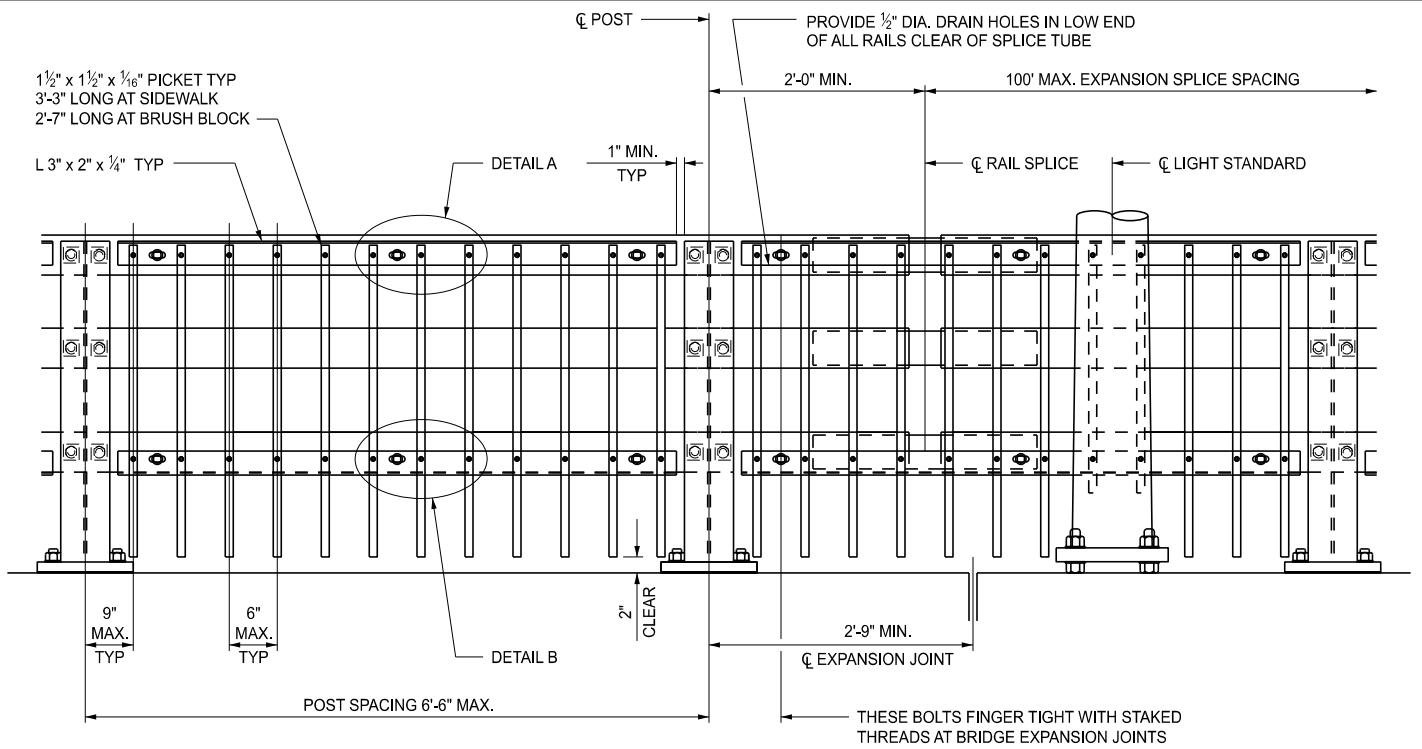
STANDARD PLAN FOR
BRIDGE RAILING,
3 TUBE WITH PICKETS

(SPECIAL DETAIL)
FHWA APPROVAL

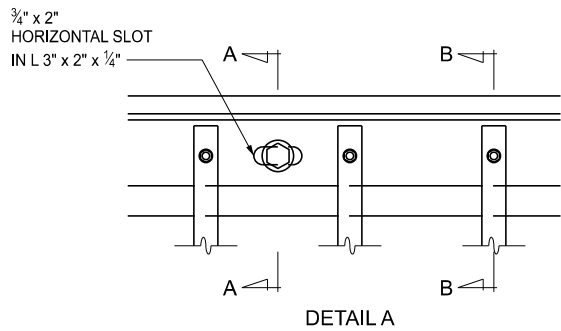
04/16/2024
PLAN DATE

B-27-B

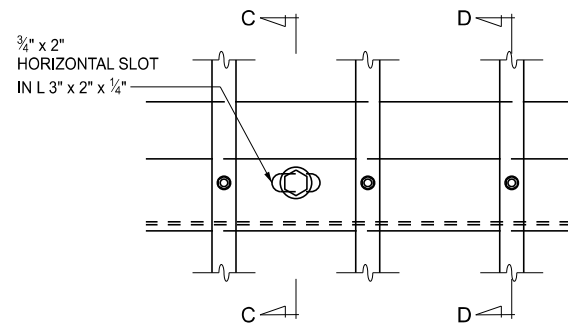
SHEET
1 OF 7



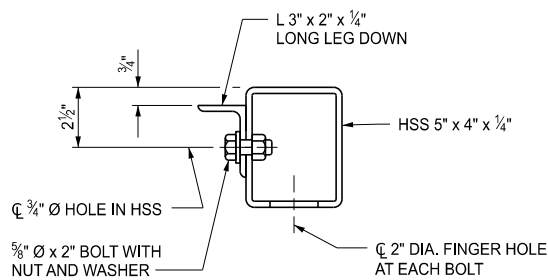
RAILING ELEVATION
(AT SIDEWALK SHOWN)



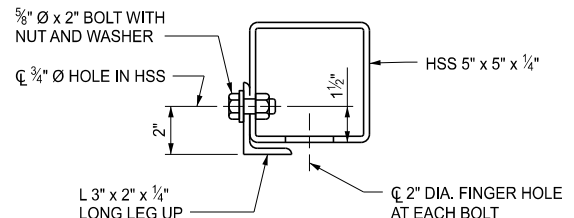
DETAIL A



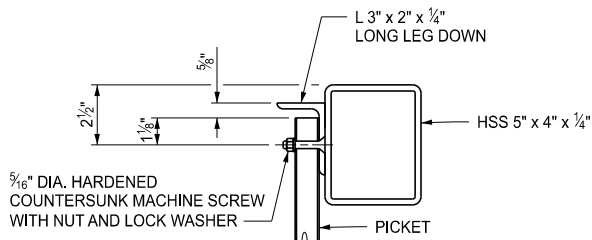
DETAIL B



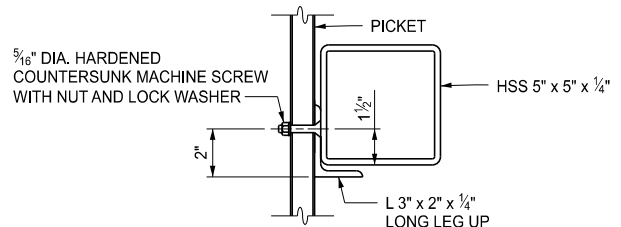
SECTION A - A



SECTION C - C



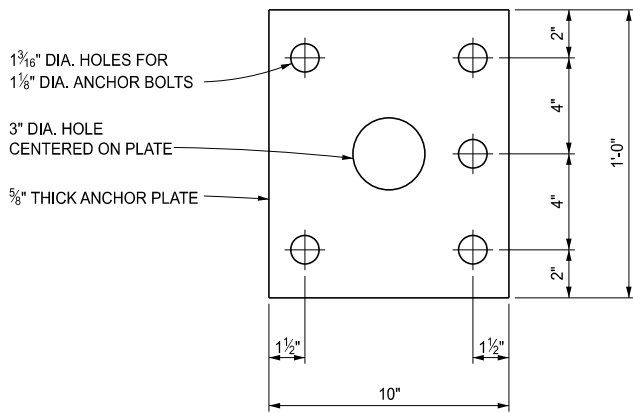
SECTION B - B



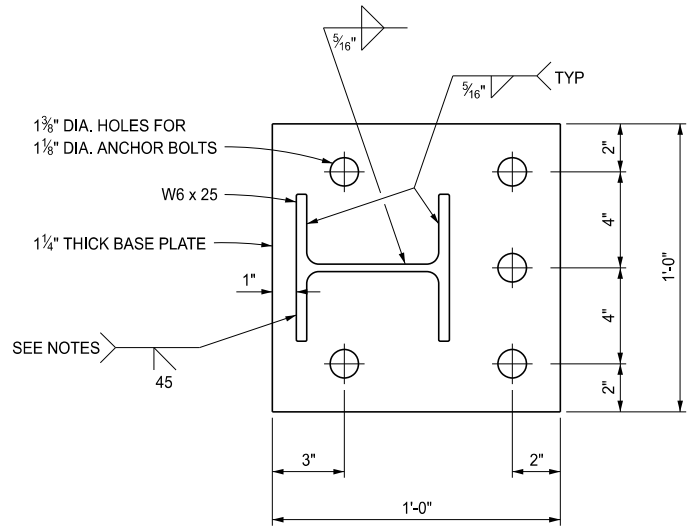
SECTION D - D

PICKET TO RAIL DETAILS

<p>MDOT Michigan Department of Transportation</p> <p>DEPARTMENT DIRECTOR BRADLEY C. WIEFERICH, PE</p>	<p>STANDARD PLAN FOR BRIDGE RAILING, 3 TUBE WITH PICKETS</p>		<p>B-27-B</p>	<p>SHEET 2 OF 7</p>
	<p>(SPECIAL DETAIL) FHWA APPROVAL</p>	<p>04/16/2024 PLAN DATE</p>		

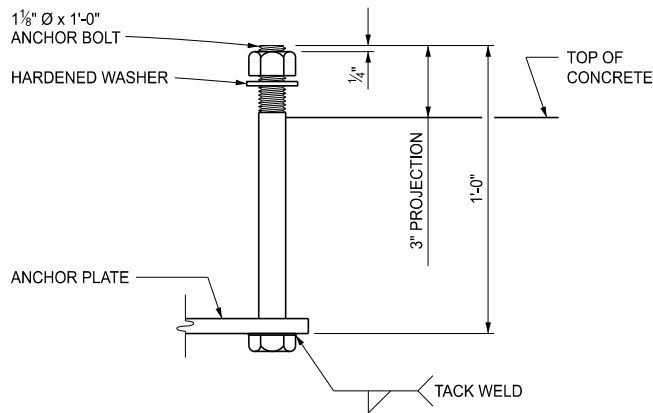


ANCHOR PLATE

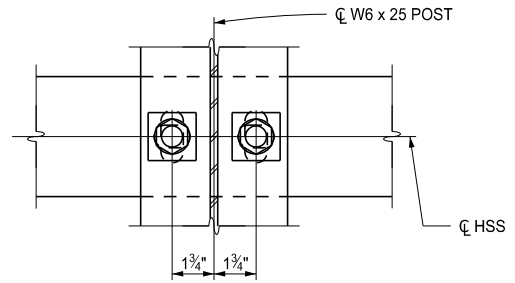


BASE PLATE

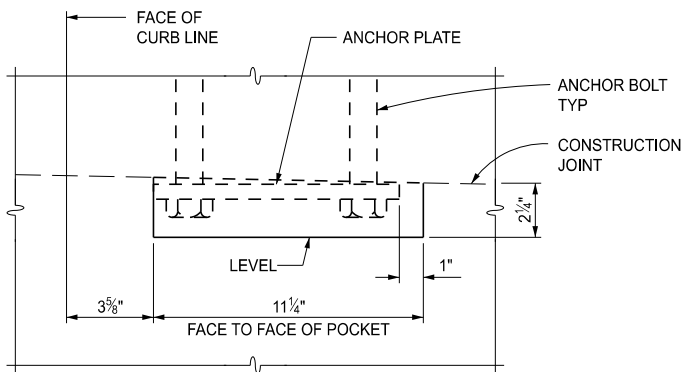
NOTE:
POST FLANGE WELD DOES NOT REQUIRE MAGNETIC PARTICLE TESTING. WELD SHALL BE BACK-GOUGED ON BACK SIDE EXCEPT AT WEB. WELD IS THE SAME ON BOTH FLANGES.



ANCHOR BOLT

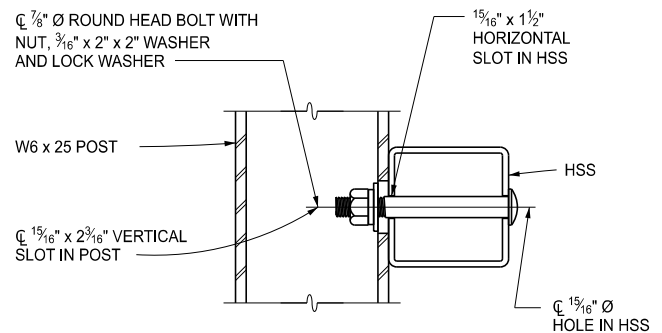


SECTION THROUGH POST WEB



DETAIL A

NOTE:
PROVIDE 15 3/4" LONG x 11 1/4" WIDE x 2 1/4" DEEP POCKET IN THE DECK SLAB AT THE LOCATION OF EACH RAIL POST. USE AT BRUSH BLOCK SECTION AND AT SIDEWALK FASCIA LESS THAN 10".



SECTION THROUGH RAIL
RAIL TO POST CONNECTIONS



DEPARTMENT DIRECTOR
BRADLEY C. WIEFERICH, PE

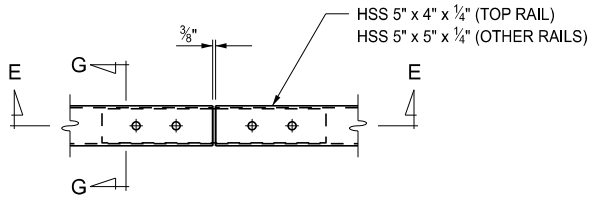
STANDARD PLAN FOR
BRIDGE RAILING,
3 TUBE WITH PICKETS

(SPECIAL DETAIL)
FHWA APPROVAL

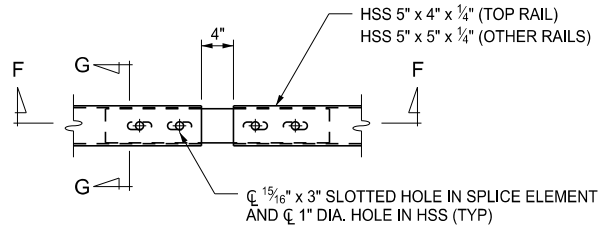
04/16/2024
PLAN DATE

B-27-B

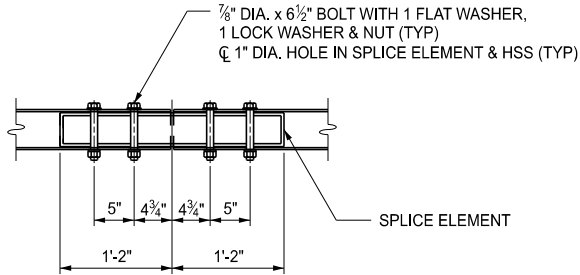
SHEET
3 OF 7



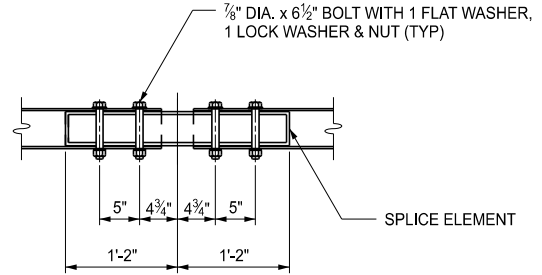
FIXED SPLICE PLAN



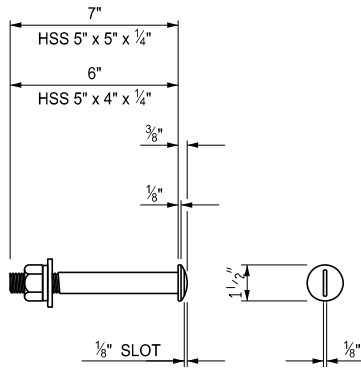
EXPANSION SPLICE PLAN



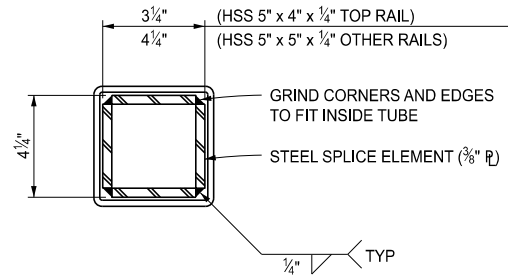
SECTION E - E



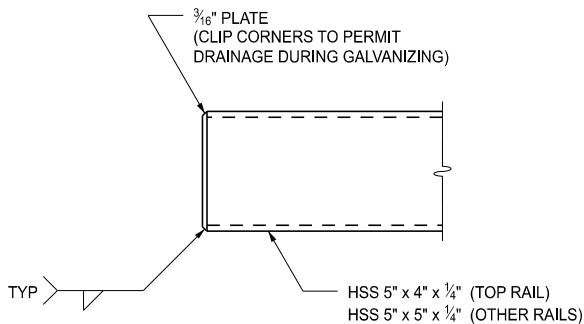
SECTION F - F



7/8" Ø ROUND HEAD BOLT



SECTION G - G



END OF RAIL DETAIL



DEPARTMENT DIRECTOR
BRADLEY C. WIEFERICH, PE

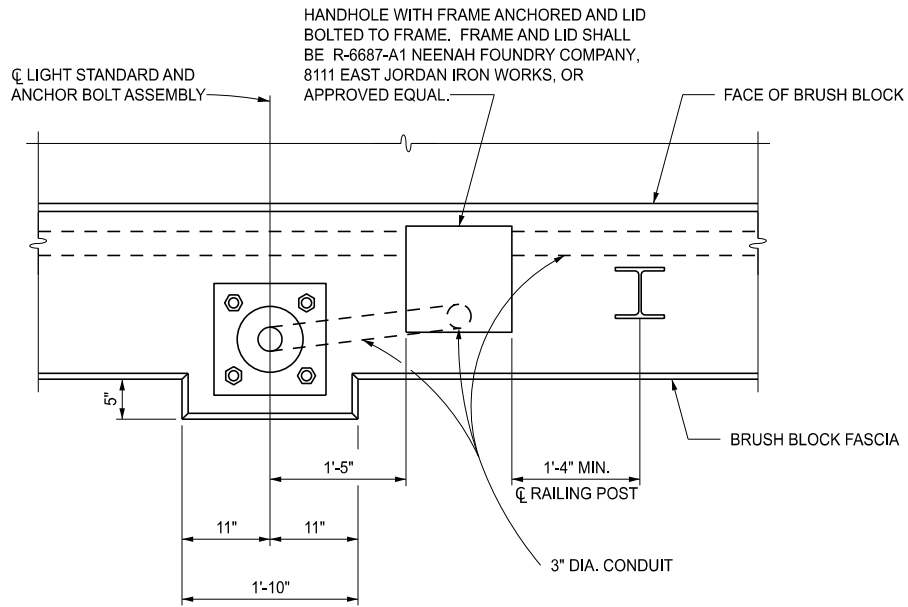
STANDARD PLAN FOR
BRIDGE RAILING,
3 TUBE WITH PICKETS

(SPECIAL DETAIL)
FHWA APPROVAL

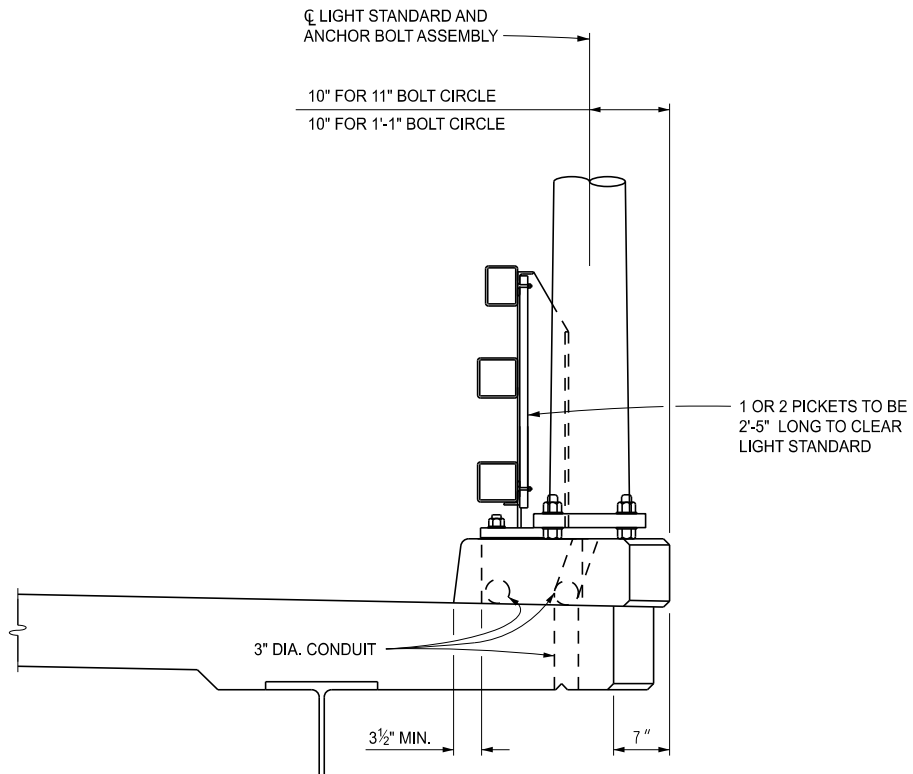
04/16/2024
PLAN DATE

B-27-B

SHEET
4 OF 7

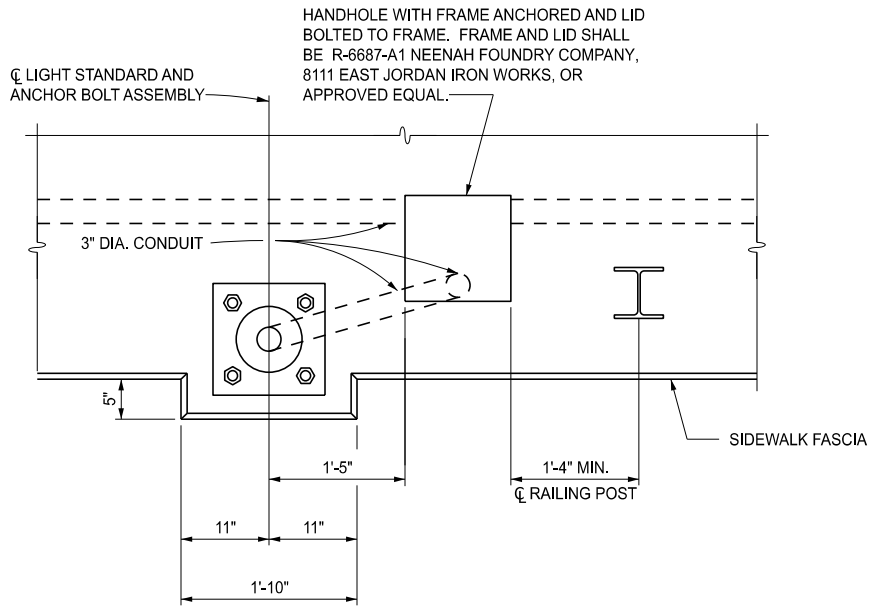


PLAN VIEW AT LIGHT STANDARD WITH BRUSH BLOCK

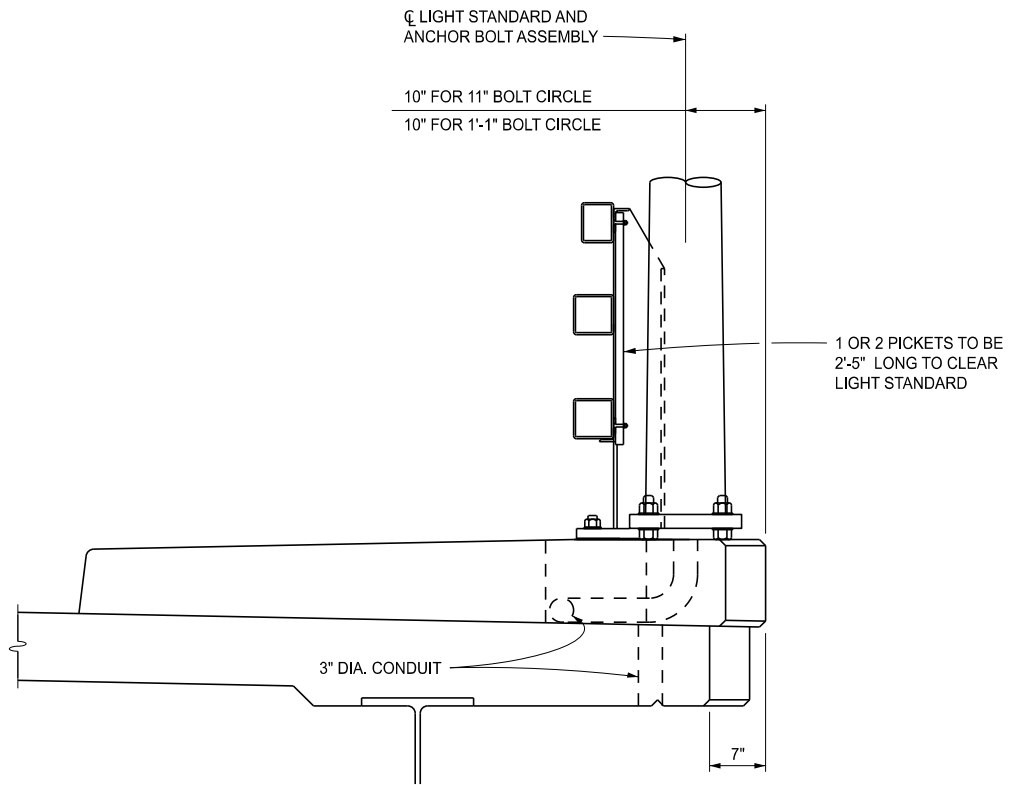


SECTION AT LIGHT STANDARD WITH BRUSH BLOCK

<p> DEPARTMENT DIRECTOR BRADLEY C. WIEFERICH, PE </p>	STANDARD PLAN FOR BRIDGE RAILING, 3 TUBE WITH PICKETS		B-27-B	SHEET 5 OF 7
	(SPECIAL DETAIL) FHWA APPROVAL	04/16/2024 PLAN DATE		

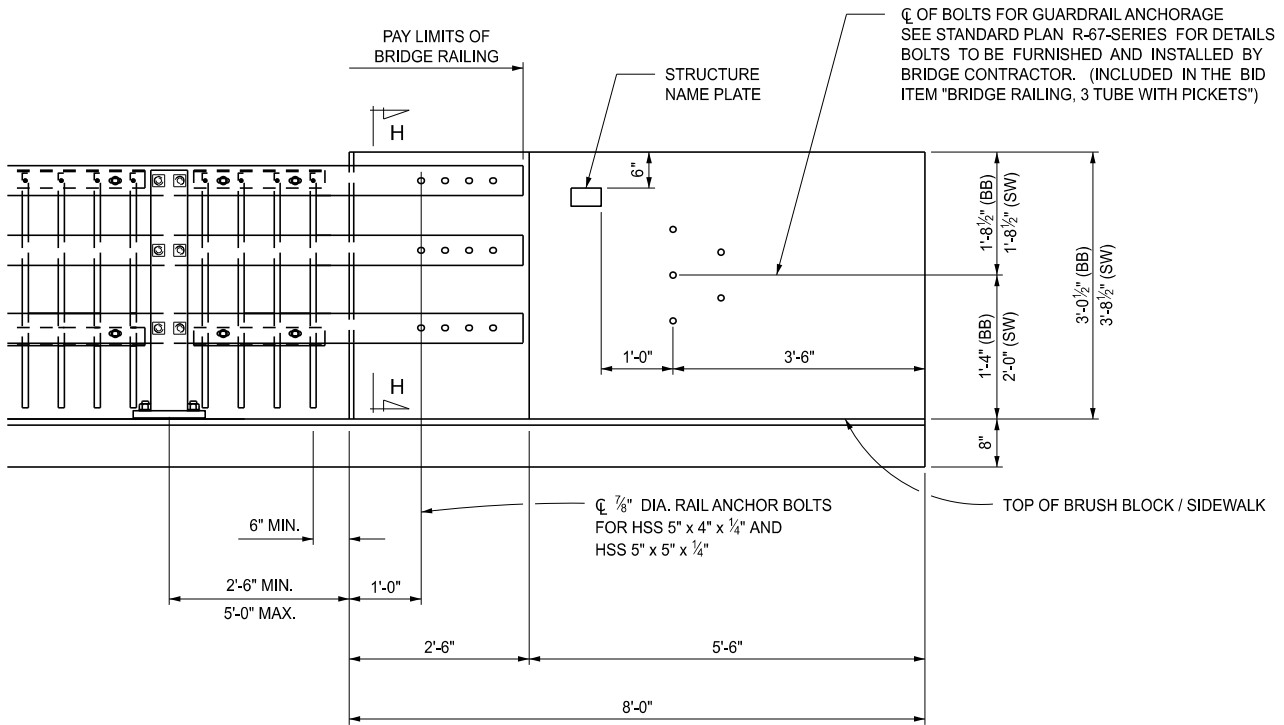


PLAN VIEW AT LIGHT STANDARD WITH SIDEWALK



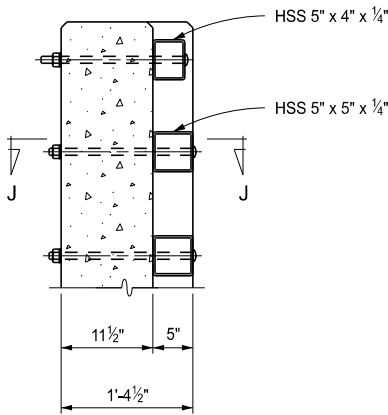
SECTION THROUGH RAILING WITH SIDEWALK

 DEPARTMENT DIRECTOR BRADLEY C. WIEFERICH, PE	STANDARD PLAN FOR BRIDGE RAILING, 3 TUBE WITH PICKETS		B-27-B	SHEET 6 OF 7
	(SPECIAL DETAIL) FHWA APPROVAL	04/16/2024 PLAN DATE		

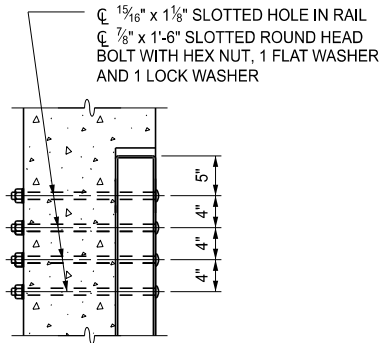


END WALL ELEVATION

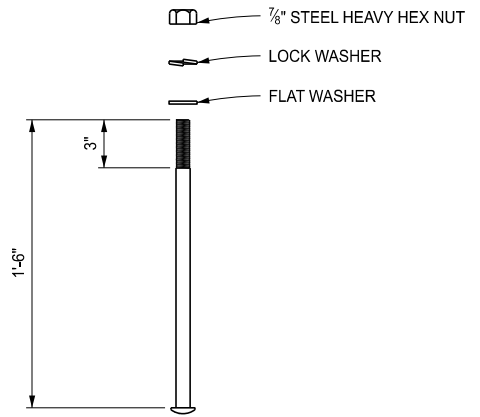
BB = BRUSH BLOCK
SW = SIDEWALK



SECTION H - H



SECTION J - J



7/8" Ø ROUND HEAD BOLT

NOTES:

RAILS SHALL BE CONTINUOUS OVER A MINIMUM OF FOUR (4) POSTS WITHOUT SPLICES WHERE POSSIBLE. RAILS SHALL BE SPLICED IN A PANEL OVER EXPANSION JOINTS.

DETAILS SHOWN ARE ACCORDING TO THE AASHTO SPECIFICATIONS.

ALL WORK AND MATERIAL SHALL BE ACCORDING TO THE STANDARD SPECIFICATIONS FOR CONSTRUCTION UNLESS OTHERWISE NOTED ON THIS PLAN.



DEPARTMENT DIRECTOR
BRADLEY C. WIEFERICH, PE

STANDARD PLAN FOR
**BRIDGE RAILING,
3 TUBE WITH PICKETS**

(SPECIAL DETAIL)
FHWA APPROVAL

04/16/2024
PLAN DATE

B-27-B

SHEET
7 OF 7