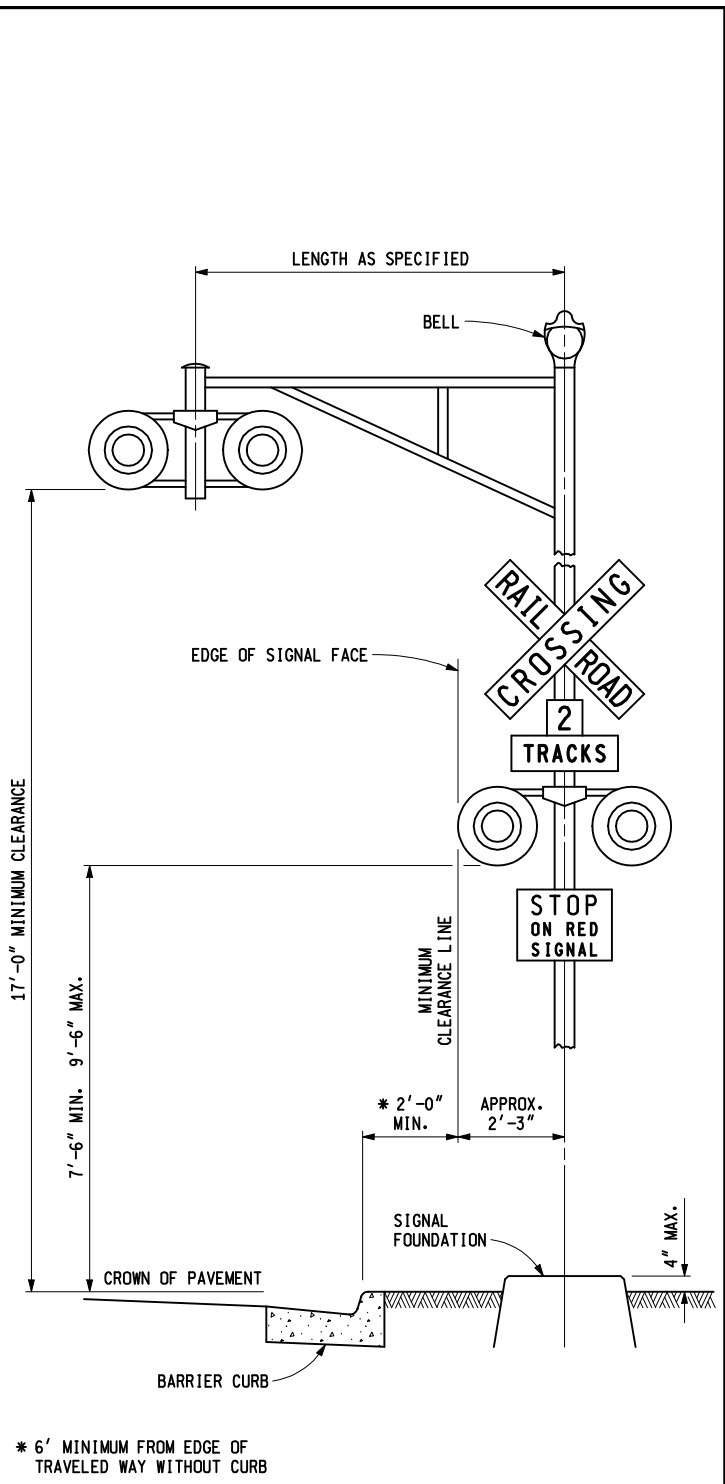


**STANDARD FLASHER**



**FLASHER WITH CANTILEVER ARM**

**MDOT**  
Michigan Department of Transportation

PREPARED BY  
DESIGN DIVISION

DRAWN BY: B.L.T.

CHECKED BY: W.K.P.

DEPARTMENT DIRECTOR  
Kirk T. Steudle

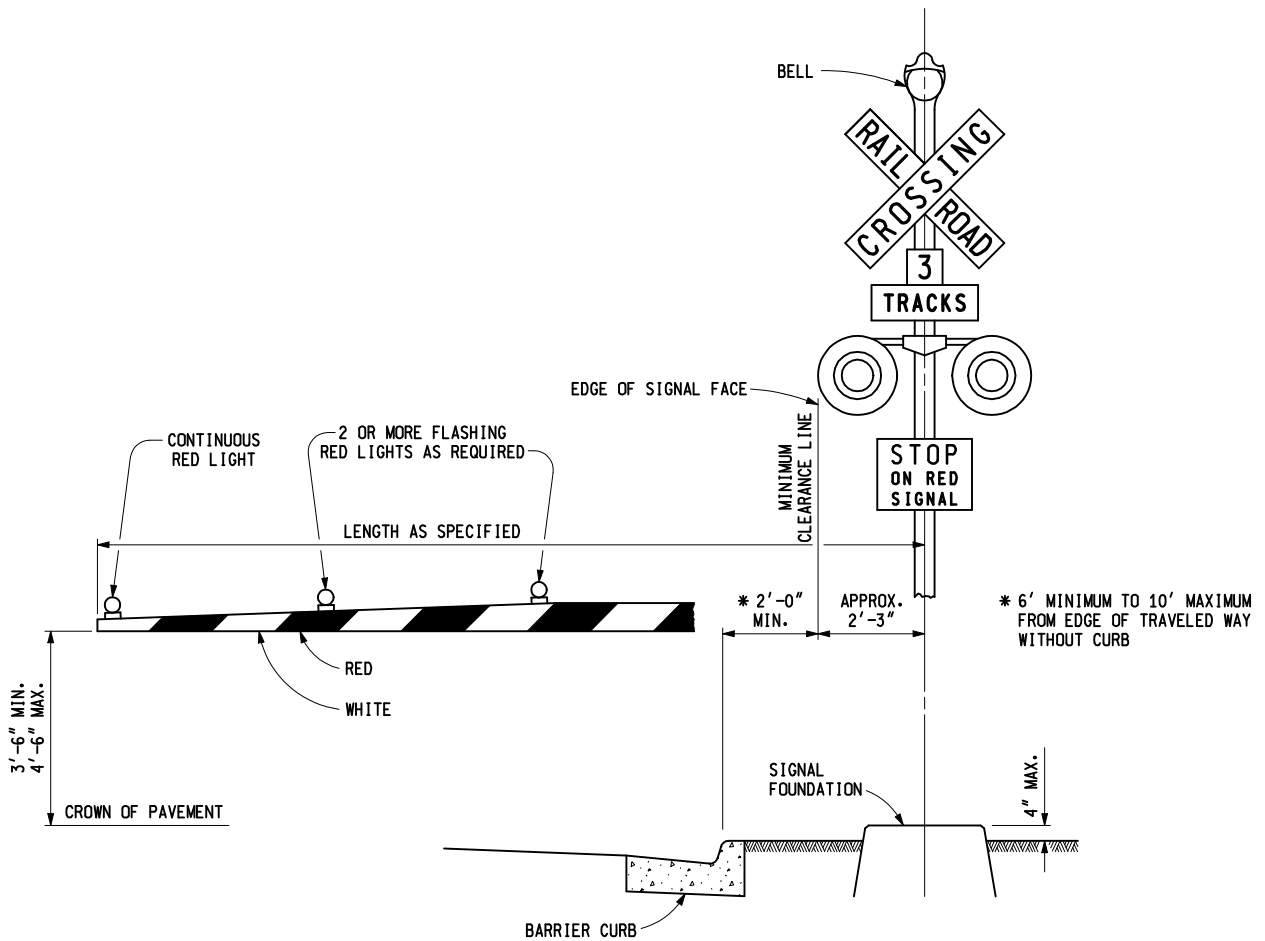
APPROVED BY: John C. Friend  
ENGINEER OF DELIVERY

APPROVED BY: Maia A. Van Park  
ENGINEER OF DEVELOPMENT

MICHIGAN DEPARTMENT OF TRANSPORTATION  
BUREAU OF HIGHWAY DEVELOPMENT STANDARD PLAN FOR

**RAILROAD CROSSING SIGNALS**

9-16-2009 F.H.W.A. APPROVAL	8-14-2008 PLAN DATE	R-122-C	SHEET 1 OF 2
--------------------------------	------------------------	---------	-----------------



### FLASHER WITH HALF ROAD GATE

**NOTES:**

SIGNALS AND GATE ASSEMBLIES SHALL BE ACCORDING TO THE RULES AND REGULATIONS OF THE STATE OF MICHIGAN AND SHALL CONFORM TO THE CURRENT RECOMMENDED PRACTICES OF THE ASSOCIATION OF AMERICAN RAILROADS AND THE AMERICAN RAILWAY ENGINEERING ASSOCIATION EXCEPT AS OTHERWISE PROVIDED BY INDIVIDUAL MICHIGAN ORDERS.

SIGNS ON SUCH ASSEMBLIES SHALL BE BLACK LEGENDS ON WHITE BACKGROUND AND CONFORM TO THE MICHIGAN MANUAL OF UNIFORM TRAFFIC CONTROL DEVICES REQUIREMENTS FOR RAILROAD CROSSING SIGNS.

GATE ARMS MAY BE MOUNTED ON SEPARATE POSTS.

CURB AND GUTTER ADJACENT TO SIGNAL SHALL BE BARRIER TYPE. ROLL CURB SHALL NOT BE USED. CONCRETE CURB AND GUTTER ENDING SHALL BE INSTALLED ACCORDING TO STANDARD PLANS R-30-SERIES AND R-121-SERIES.

A LONGITUDINAL GUARDRAIL SHOULD NOT BE USED TO PROTECT TRAFFIC CONTROL DEVICES AT THE CROSSING UNLESS THE GUARDRAIL IS OTHERWISE WARRANTED, AS FOR A STEEP EMBANKMENT.

MICHIGAN DEPARTMENT OF TRANSPORTATION BUREAU OF HIGHWAY DEVELOPMENT STANDARD PLAN FOR			
<b>RAILROAD CROSSING SIGNALS</b>			
9-16-2009 <small>F.H.W.A. APPROVAL</small>	8-14-2008 <small>PLAN DATE</small>	<b>R-122-C</b>	SHEET 2 OF 2