

BRIDGE BARRIER RAILING, TYPE 7 OUTSIDE ELEVATION

APPROVED BY: \_\_\_\_\_  
DIRECTOR, BUREAU OF BRIDGES AND STRUCTURES

APPROVED BY: \_\_\_\_\_  
DIRECTOR, BUREAU OF FIELD SERVICES

APPROVED BY: \_\_\_\_\_  
DIRECTOR, BUREAU OF DEVELOPMENT



DEPARTMENT DIRECTOR  
BRADLEY C. WIEFERICH, PE

STANDARD PLAN FOR  
BRIDGE BARRIER RAILING, TYPE 7

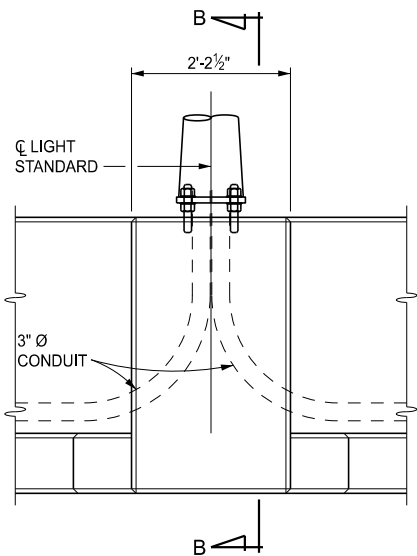
(SPECIAL DETAIL)  
FHWA APPROVAL

05/07/2026  
PLAN DATE

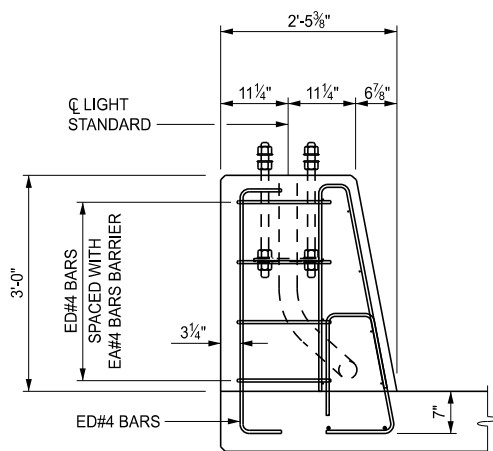
**B-28-A**

SHEET  
1 OF 7

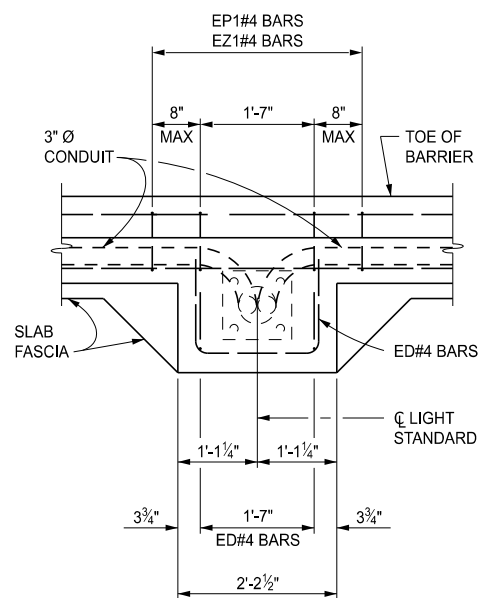




ELEVATION VIEW



SECTION B-B



PLAN VIEW

LIGHT STANDARD DETAILS

NO AESTHETIC TREATMENT ON LIGHT STANDARD 2'-2 $\frac{1}{2}$ " x 1'-2 $\frac{7}{8}$ " PROTRUSION



DEPARTMENT DIRECTOR  
BRADLEY C. WIEFERICH, PE

STANDARD PLAN FOR  
BRIDGE BARRIER RAILING, TYPE 7

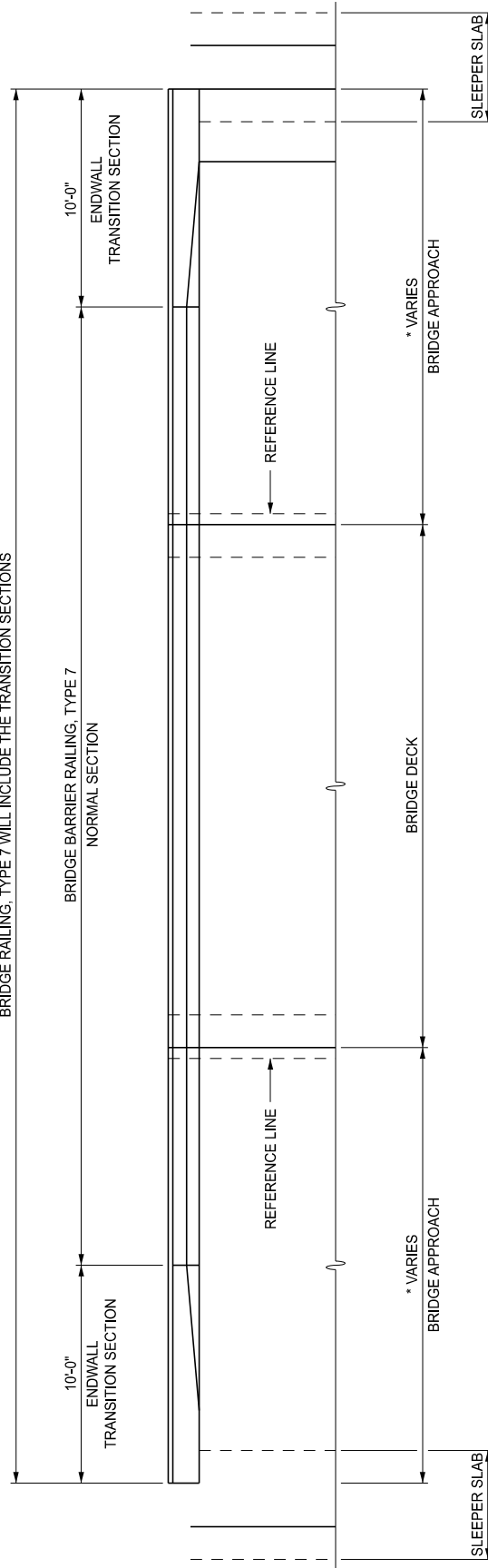
(SPECIAL DETAIL)  
FHWA APPROVAL

05/07/2026  
PLAN DATE

B-28-A

SHEET  
3 OF 7

BRIDGE RAILING, TYPE 7 WILL INCLUDE THE TRANSITION SECTIONS



**BRIDGE BARRIER RAILING, TYPE 7  
PLAN VIEW**

\* DEPENDANT UPON BRIDGE APPROACH LENGTH, THE TRANSITION SECTION CAN BE PARTLY ON BRIDGE DECK OR IF NO APPROACH SLAB IS PRESENT, ENTIRELY ON THE BRIDGE DECK.



DEPARTMENT DIRECTOR  
BRADLEY C. WIEFERICH, PE

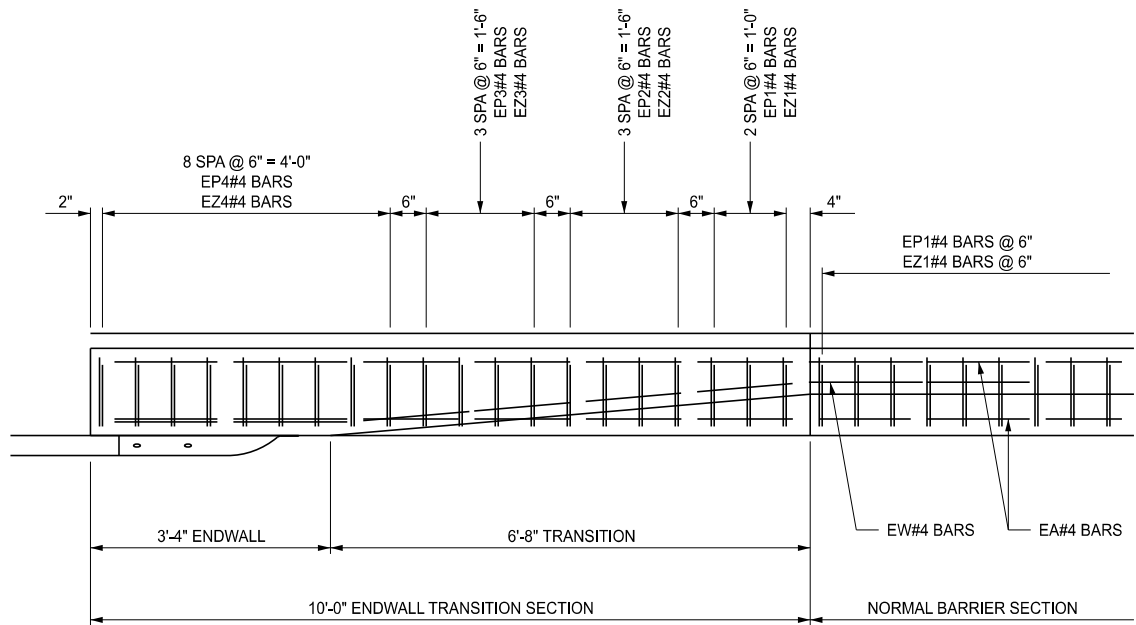
STANDARD PLAN FOR  
**BRIDGE BARRIER RAILING, TYPE 7**

(SPECIAL DETAIL)  
FHWA APPROVAL

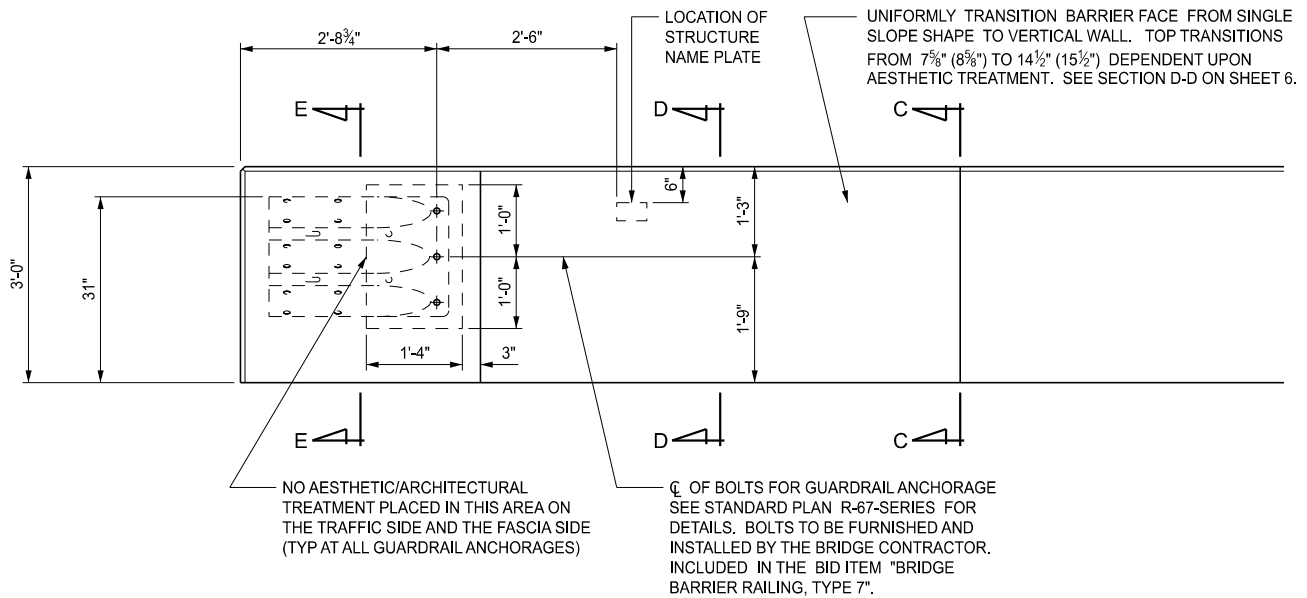
05/07/2026  
PLAN DATE

**B-28-A**

SHEET  
4 OF 7



PLAN VIEW



ELEVATION VIEW

**MDOT**  
Michigan Department of Transportation

DEPARTMENT DIRECTOR  
BRADLEY C. WIEFERICH, PE

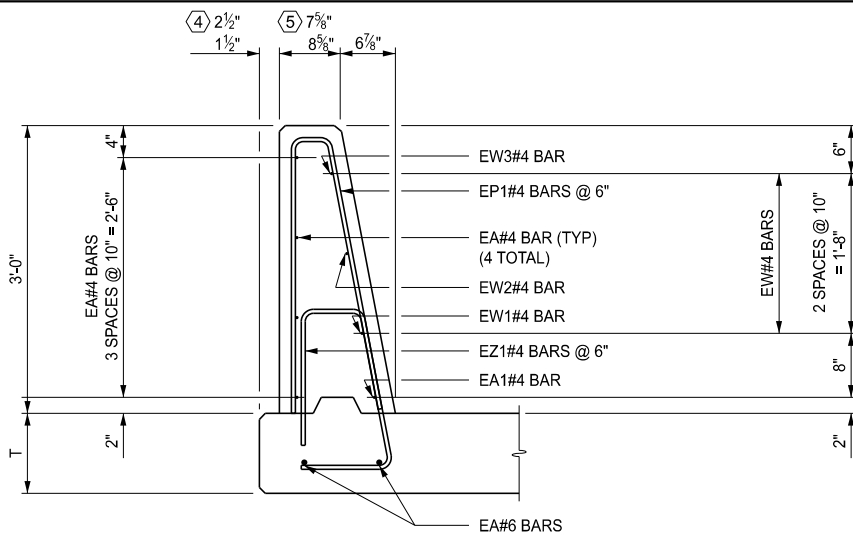
STANDARD PLAN FOR  
BRIDGE BARRIER RAILING, TYPE 8

(SPECIAL DETAIL)  
FHWA APPROVAL

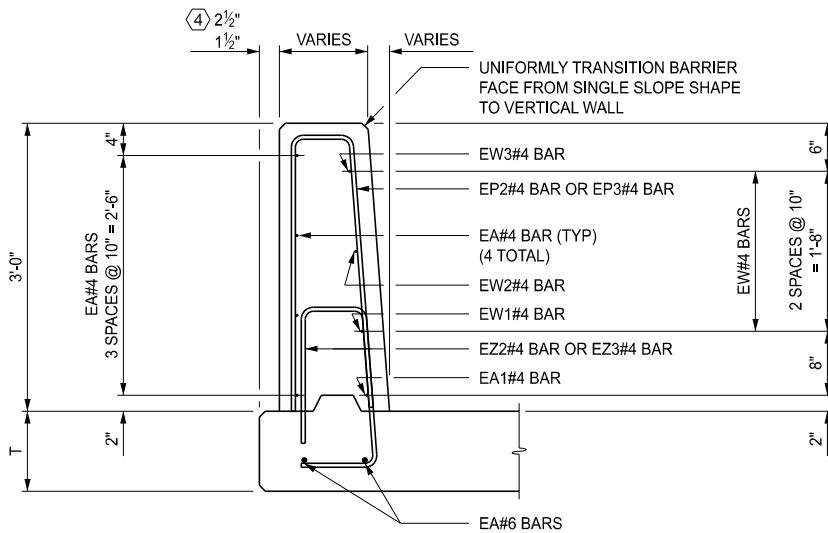
05/07/2026  
PLAN DATE

B-28-A

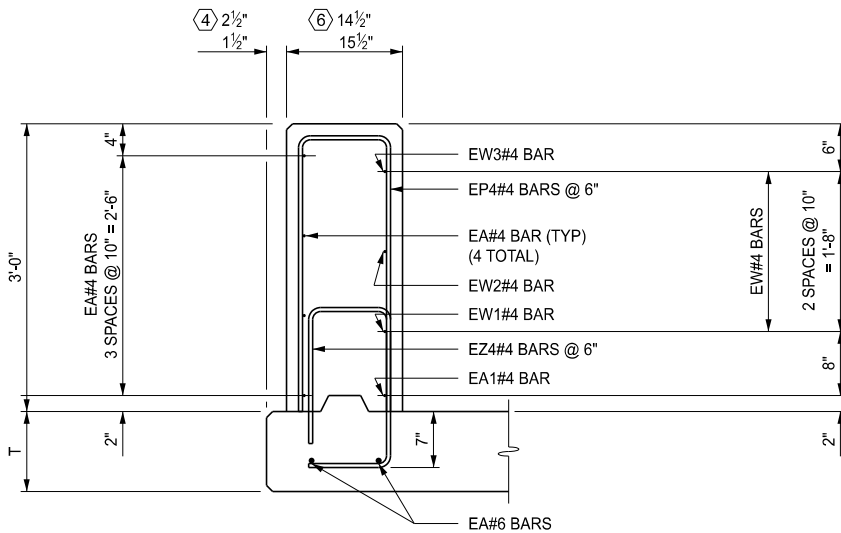
SHEET  
5 OF 7



SECTION C-C



SECTION D-D



SECTION E-E

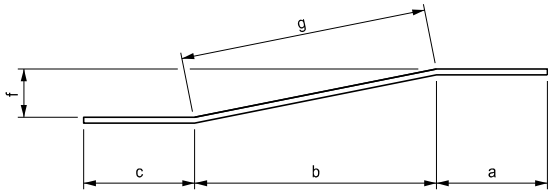
- ④ 2½" BRIDGE BARRIER RAILING, TYPE 7 (+ SEE NOTES)  
1½" BRIDGE BARRIER RAILING, AESTHETIC, TYPE 7, DET 2
- ⑤ 7¾" BRIDGE BARRIER RAILING, TYPE 7 (+ SEE NOTES)  
8¾" BRIDGE BARRIER RAILING, AESTHETIC, TYPE 7, DET 2
- ⑥ 14½" BRIDGE BARRIER RAILING, TYPE 7 (+ SEE NOTES)  
15½" BRIDGE BARRIER RAILING, AESTHETIC, TYPE 7, DET 2

**MDOT**  
Michigan Department of Transportation

DEPARTMENT DIRECTOR  
BRADLEY C. WIEFERICH, PE

STANDARD PLAN FOR  
**BRIDGE BARRIER RAILING, TYPE 7**

(SPECIAL DETAIL)	05/07/2026	<b>B-28-A</b>	SHEET 6 OF 7
FHWA APPROVAL	PLAN DATE		

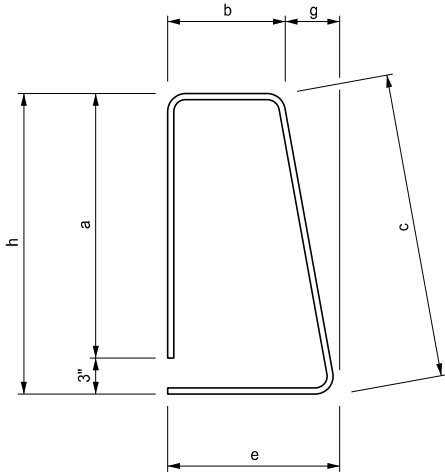


ENDWALL TRANSITION SECTION BARS							
	# of bars	c	b	a	g	j	
EA1	1	—	—	11'-11"	--	--	EA041111
EW1	1	3'-0"	5'-6"	3'-5"	5'-6"	1 <sup>7</sup> / <sub>8</sub> "	EW041111
EW2	1	3'-0"	5'-6"	3'-5 <sup>7</sup> / <sub>8</sub> "	5'-6 <sup>1</sup> / <sub>8</sub> "	3 <sup>7</sup> / <sub>8</sub> "	EW041200
EW3	1	3'-0"	5'-6"	3'-6 <sup>3</sup> / <sub>4</sub> "	5'-6 <sup>1</sup> / <sub>4</sub> "	5 <sup>3</sup> / <sub>4</sub> "	EW041201

$$L = c + a + g$$

BARRIER SECTION BARS									
	# of bars	a	b	c	e	g	h	h - a	
EZ1	--	1'-5"	7 <sup>3</sup> / <sub>8</sub> "	1'-8 <sup>3</sup> / <sub>8</sub> "	11 <sup>1</sup> / <sub>4</sub> "	3 <sup>5</sup> / <sub>8</sub> "	1'-8"	3"	EZ040408

$$L = a + b + c + e$$

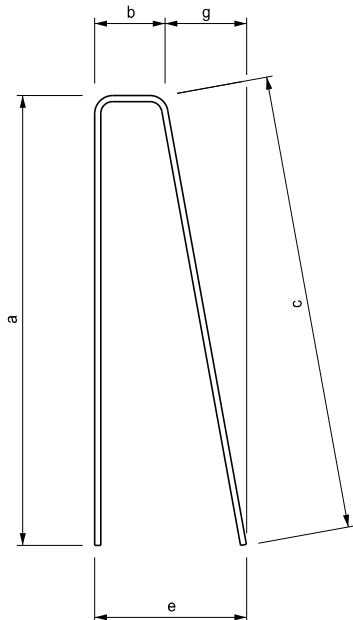


ENDWALL TRANSITION SECTION BARS									
	# of bars	a	b	c	e	g	h	h - a	
EZ1	3	1'-5"	7 <sup>3</sup> / <sub>8</sub> "	1'-8 <sup>3</sup> / <sub>8</sub> "	11 <sup>1</sup> / <sub>4</sub> "	3 <sup>5</sup> / <sub>8</sub> "	1'-8"	3"	EZ040408
EZ2	4	1'-5"	7 <sup>7</sup> / <sub>8</sub> "	1'-8 <sup>1</sup> / <sub>2</sub> "	10 <sup>7</sup> / <sub>8</sub> "	2 <sup>7</sup> / <sub>8</sub> "	1'-8"	3"	EZ040408
EZ3	4	1'-5"	8 <sup>3</sup> / <sub>4</sub> "	1'-8"	10 <sup>1</sup> / <sub>4</sub> "	1 <sup>1</sup> / <sub>2</sub> "	1'-8"	3"	EZ040408
EZ4	9	1'-5"	10 <sup>1</sup> / <sub>2</sub> "	1'-8"	10 <sup>1</sup> / <sub>2</sub> "	—	1'-8"	3"	EZ040410

$$L = a + b + c + e$$

BARRIER SECTION BARS							
	# of bars	a	b	c	e	g	
EP1	—	2'-10 <sup>1</sup> / <sub>4</sub> "	4 <sup>3</sup> / <sub>4</sub> "	2'-11"	11"	6 <sup>1</sup> / <sub>4</sub> "	EP040602

$$L = a + b + c$$



ENDWALL TRANSITION SECTION BARS							
	# of bars	a	b	c	e	g	
EP1	3	2'-10 <sup>1</sup> / <sub>4</sub> "	4 <sup>3</sup> / <sub>4</sub> "	2'-11"	11"	6 <sup>1</sup> / <sub>4</sub> "	EP040602
EP2	4	2'-9 <sup>7</sup> / <sub>8</sub> "	6 <sup>1</sup> / <sub>4</sub> "	2'-10 <sup>7</sup> / <sub>8</sub> "	11"	4 <sup>3</sup> / <sub>4</sub> "	EP040603
EP3	4	2'-10 <sup>5</sup> / <sub>8</sub> "	8 <sup>1</sup> / <sub>4</sub> "	2'-10 <sup>5</sup> / <sub>8</sub> "	11"	2 <sup>3</sup> / <sub>4</sub> "	EP040605
EP4	9	2'-10 <sup>1</sup> / <sub>2</sub> "	11"	2'-10 <sup>1</sup> / <sub>2</sub> "	11"	--	EP040608

$$L = a + b + c$$

NOTES:

DETAILS SHOWN ARE ACCORDING TO AASHTO SPECIFICATIONS.

SEE STANDARD PLAN B-103-SERIES FOR LIGHT STANDARD ANCHOR BOLT ASSEMBLY DETAILS,

ALL WORK AND MATERIAL ARE ACCORDING TO THE STANDARD SPECIFICATIONS FOR CONSTRUCTION.



DEPARTMENT DIRECTOR  
BRADLEY C. WIEFERICH, PE

STANDARD PLAN FOR  
BRIDGE BARRIER RAILING, TYPE 7

(SPECIAL DETAIL)  
FHWA APPROVAL

05/07/2026  
PLAN DATE

B-28-A

SHEET  
7 OF 7