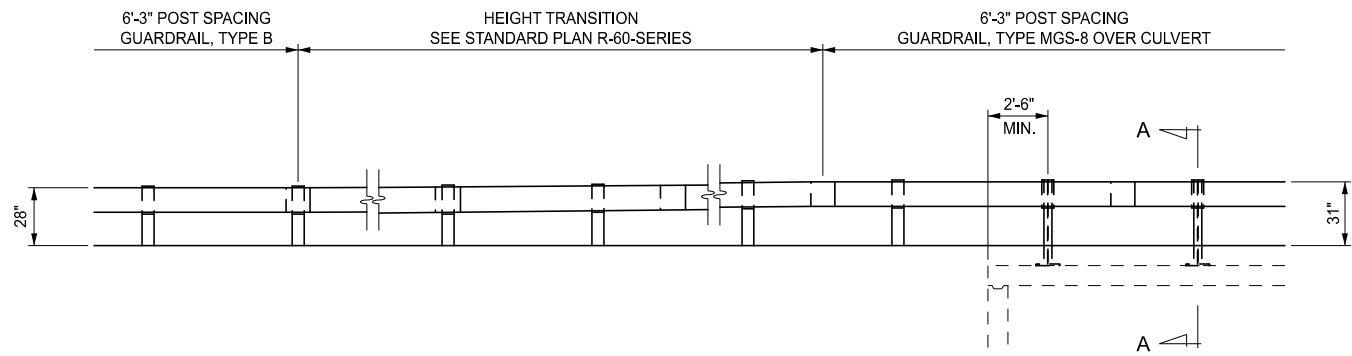
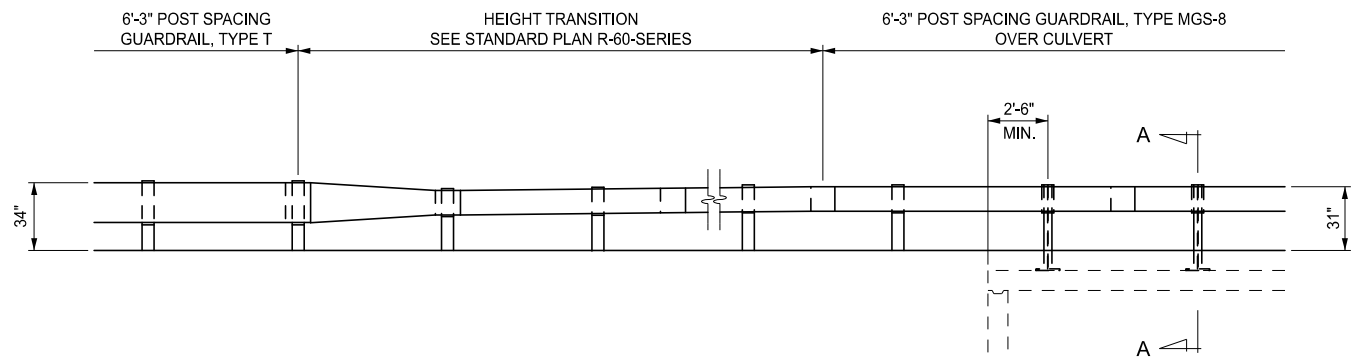


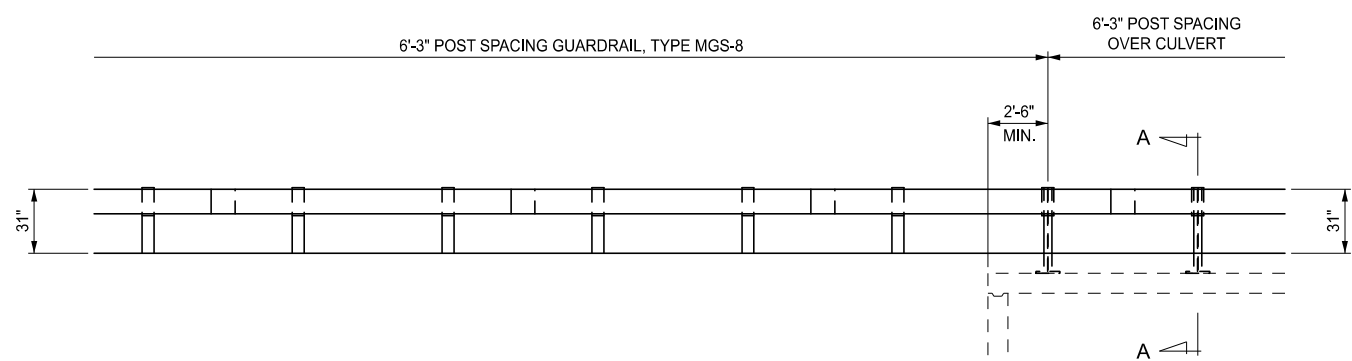
PLAN VIEW



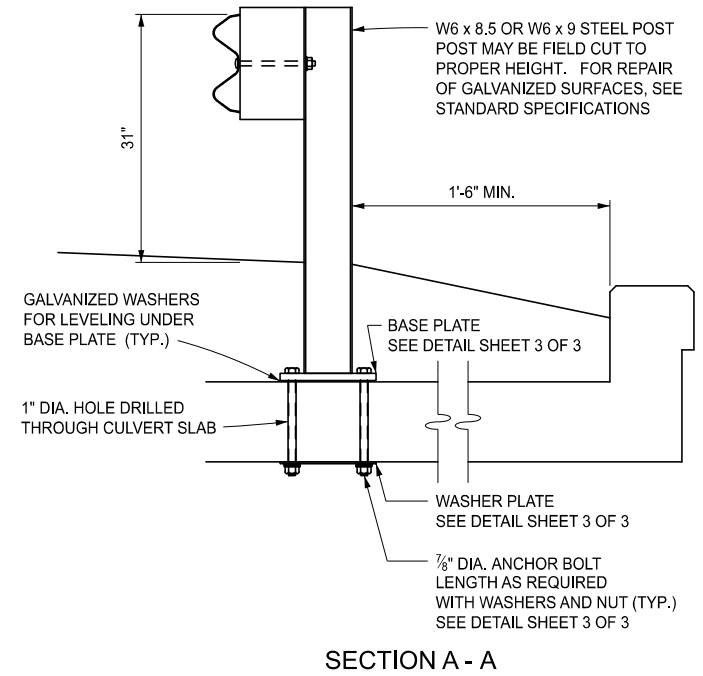
ELEVATION SHOWING GUARDRAIL, TYPE B



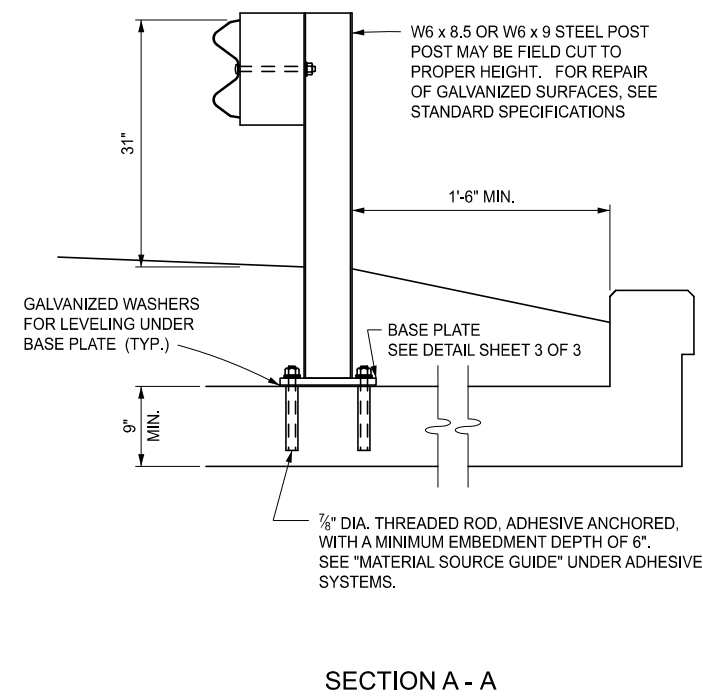
ELEVATION SHOWING GUARDRAIL, TYPE T



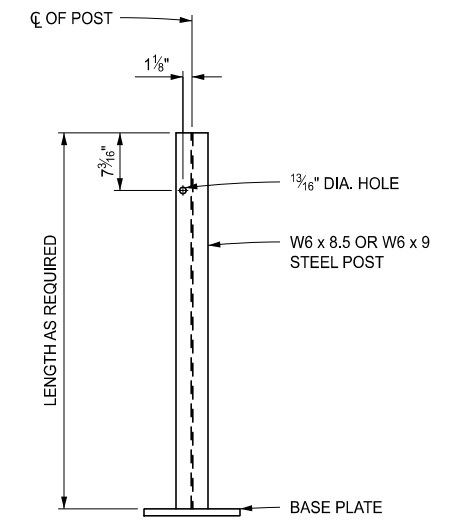
ELEVATION SHOWING GUARDRAIL, TYPE MGS-8



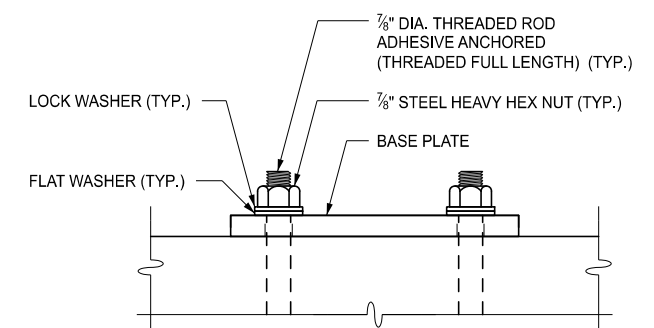
PREFERRED CONSTRUCTION METHOD



ALTERNATE CONSTRUCTION METHOD



STEEL POST DETAIL FOR GUARDRAIL, TYPE MGS-8



ANCHOR DETAIL

APPROVED BY: \_\_\_\_\_  
DIRECTOR, BUREAU OF FIELD SERVICES

APPROVED BY: \_\_\_\_\_  
DIRECTOR, BUREAU OF DEVELOPMENT



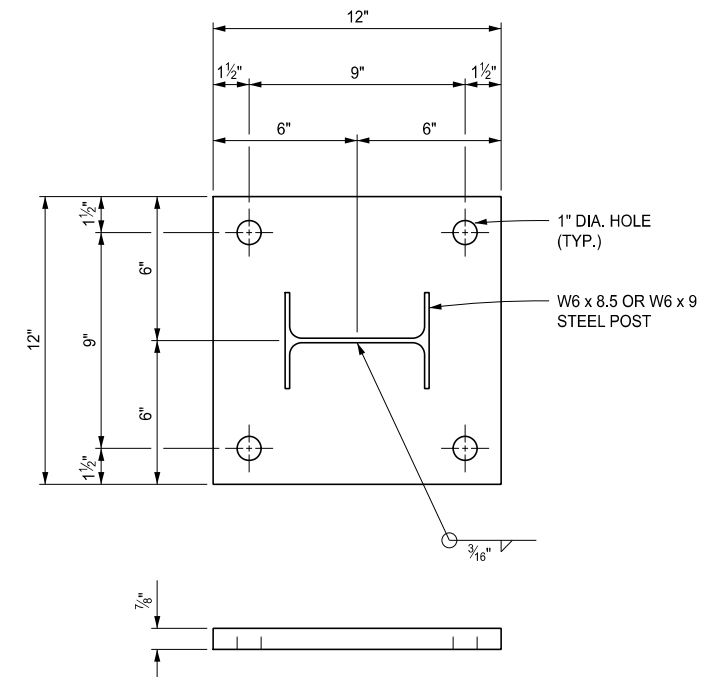
STANDARD PLAN FOR  
GUARDRAIL OVER BOX OR SLAB CULVERTS

|                  |            |        |                 |
|------------------|------------|--------|-----------------|
| (SPECIAL DETAIL) | 08/01/2019 | R-73-F | SHEET<br>1 OF 3 |
| FHWA APPROVAL    | PLAN DATE  |        |                 |

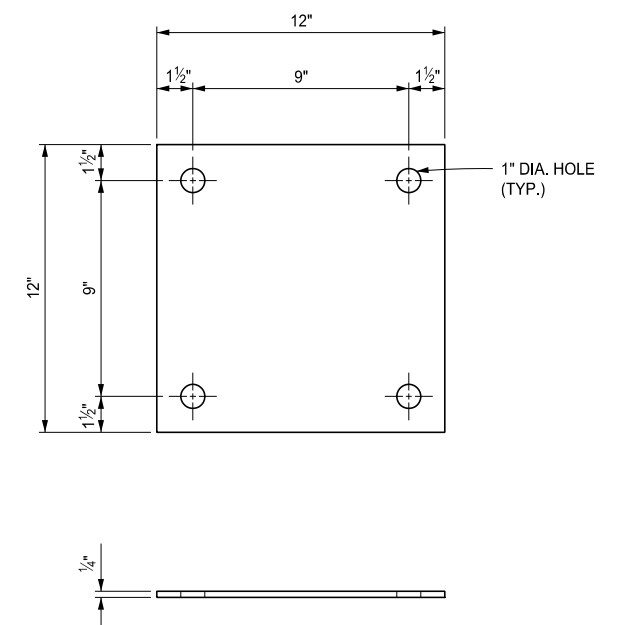


STANDARD PLAN FOR  
GUARDRAIL OVER BOX OR SLAB CULVERTS

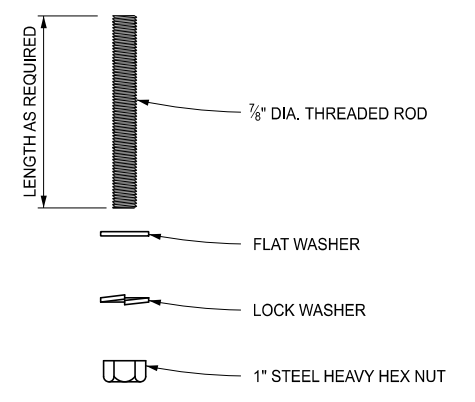
|                  |            |        |                 |
|------------------|------------|--------|-----------------|
| (SPECIAL DETAIL) | 08/01/2019 | R-73-F | SHEET<br>2 OF 3 |
| FHWA APPROVAL    | PLAN DATE  |        |                 |



BASE PLATE DETAIL



WASHER PLATE DETAIL



THREADED ROD DETAIL

NOTES:

GUARDRAIL SHALL BE CONSTRUCTED AND PAID FOR ACCORDING TO THE STANDARD SPECIFICATIONS FOR CONSTRUCTION AND STANDARD PLAN R-60-SERIES. IN ADDITION, POSTS ANCHORED TO THE CULVERT SLAB WILL BE PAID FOR AS "GUARDRAIL POST, CULV", WHICH INCLUDES ALL LABOR AND MATERIALS REQUIRED TO CONSTRUCT THE POST AS DETAILED ON THIS PLAN.

ALL MATERIALS FOR GUARDRAIL POST, CULVERT SHALL MEET THE STANDARD SPECIFICATIONS FOR CONSTRUCTION FOR BRIDGE RAILINGS.

ALL WORK AND MATERIALS SHALL BE ACCORDING TO THE STANDARD SPECIFICATIONS FOR CONSTRUCTION.

|  |                                   |                         |  |          |
|--|-----------------------------------|-------------------------|--|----------|
|  | STANDARD PLAN FOR                 |                         |  | SHEET OF |
|  | (SPECIAL DETAIL)<br>FHWA APPROVAL | 00/00/0000<br>PLAN DATE |  |          |

|  |                                   |                         |        |          |
|--|-----------------------------------|-------------------------|--------|----------|
|  | STANDARD PLAN FOR                 |                         |        | SHEET OF |
|  | (SPECIAL DETAIL)<br>FHWA APPROVAL | 08/01/2019<br>PLAN DATE | R-73-F |          |