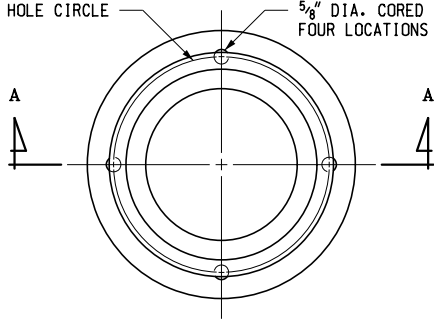
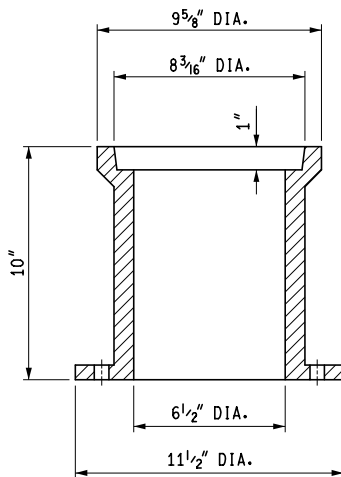


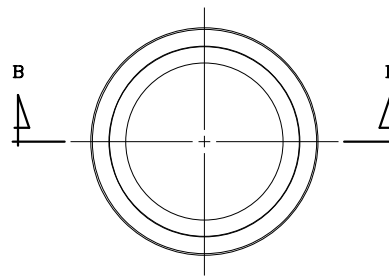
9 1/4" DIA. HOLE CIRCLE  
5/8" DIA. CORED HOLE  
FOUR LOCATIONS



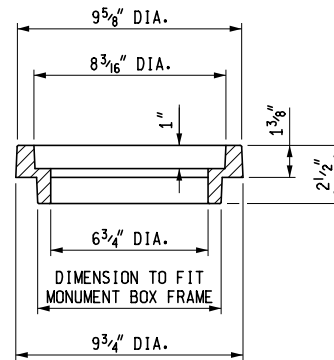
PLAN VIEW



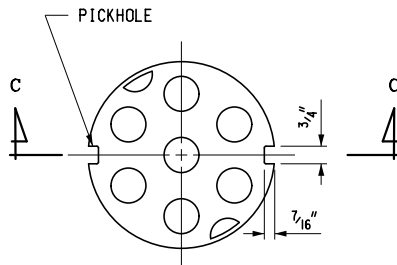
SECTION A - A  
MONUMENT BOX FRAME



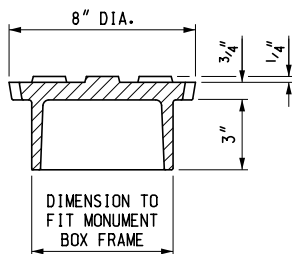
PLAN VIEW



SECTION B - B  
MONUMENT BOX RING



PLAN VIEW



SECTION C - C  
MONUMENT BOX COVER

NOTES:

ALL MATERIALS AND WORKMANSHIP SHALL BE ACCORDING TO THE CURRENT STANDARD SPECIFICATIONS.

THE CASTINGS SHALL MEET THE REQUIREMENTS OF THE CURRENT STANDARD SPECIFICATIONS FOR GRAY IRON CASTINGS.

ALL CASTINGS SHALL BE CLEANED BY CURRENT APPROVED BLASTING METHODS.

ALL CASTINGS AND THEIR MATCHING SEATS SHALL BE GROUND OR MACHINED SO THAT AN EVEN BEARING IS ATTAINED, THUS PREVENTING ROCKING OR TILTING.

THE CASTING SHALL BE FREE OF POURING FAULTS, BLOW HOLES, CRACKS, AND OTHER IMPERFECTIONS. THEY SHALL BE SOUND, TRUE TO FORM AND THICKNESS, CLEAN AND NEATLY FINISHED, AND SHALL BE COATED WITH COAL TAR PITCH VARNISH.



PREPARED BY  
DESIGN DIVISION

DRAWN BY: B.L.T.

CHECKED BY: W.K.P.

DEPARTMENT DIRECTOR  
Kirk T. Stuedle

APPROVED BY: *Randy Van Pelt*  
DIRECTOR, BUREAU OF FIELD SERVICES

APPROVED BY: *Mark A. Van Pelt*  
DIRECTOR, BUREAU OF HIGHWAY DEVELOPMENT

MICHIGAN DEPARTMENT OF TRANSPORTATION  
BUREAU OF HIGHWAY DEVELOPMENT STANDARD PLAN FOR

MONUMENT BOXES

9-30-2014  
F.H.W.A. APPROVAL

4-16-2014  
PLAN DATE

R-11-E

SHEET  
1 OF 1