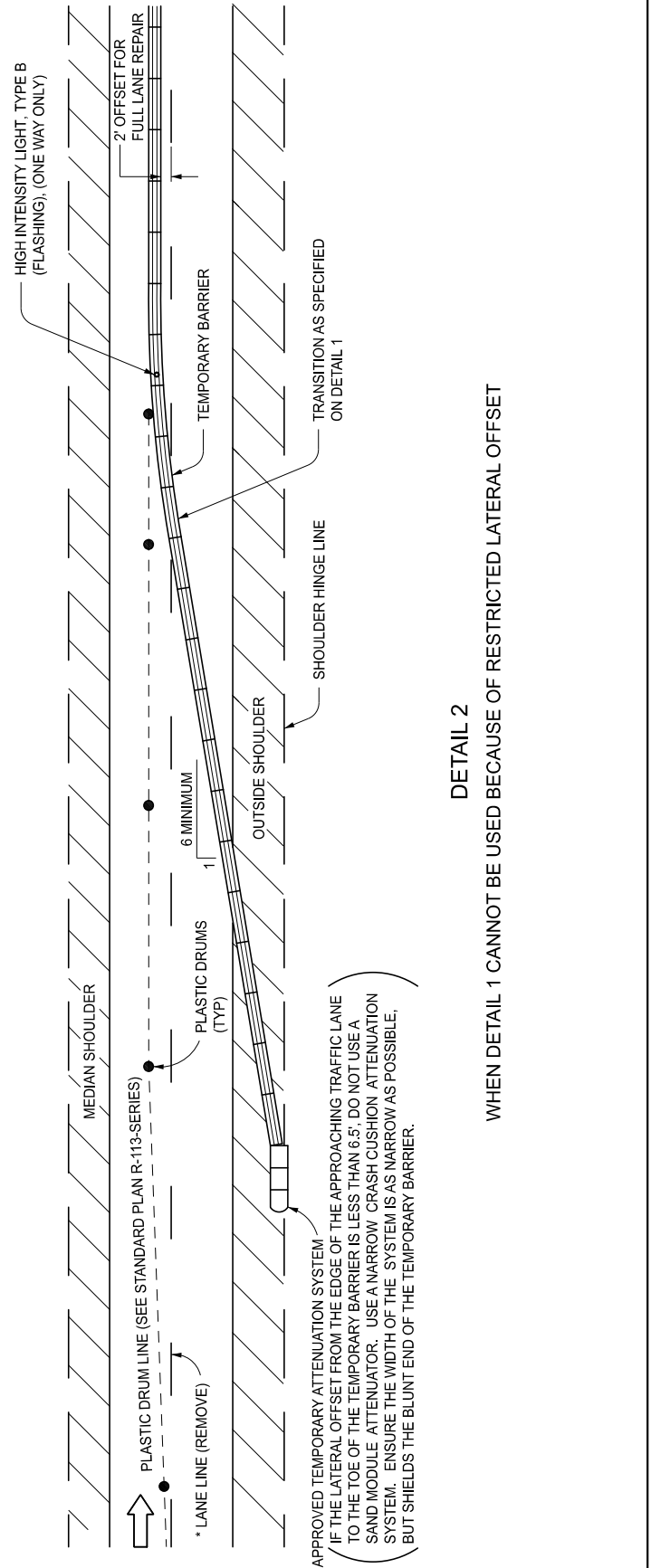


* LANE LINE SHALL BE REMOVED A MINIMUM LENGTH EQUAL TO THE LENGTH OF THE DRUM LINE TAPER; TYPICAL FOR DETAILS 1, 2, 3, 4, AND 5.

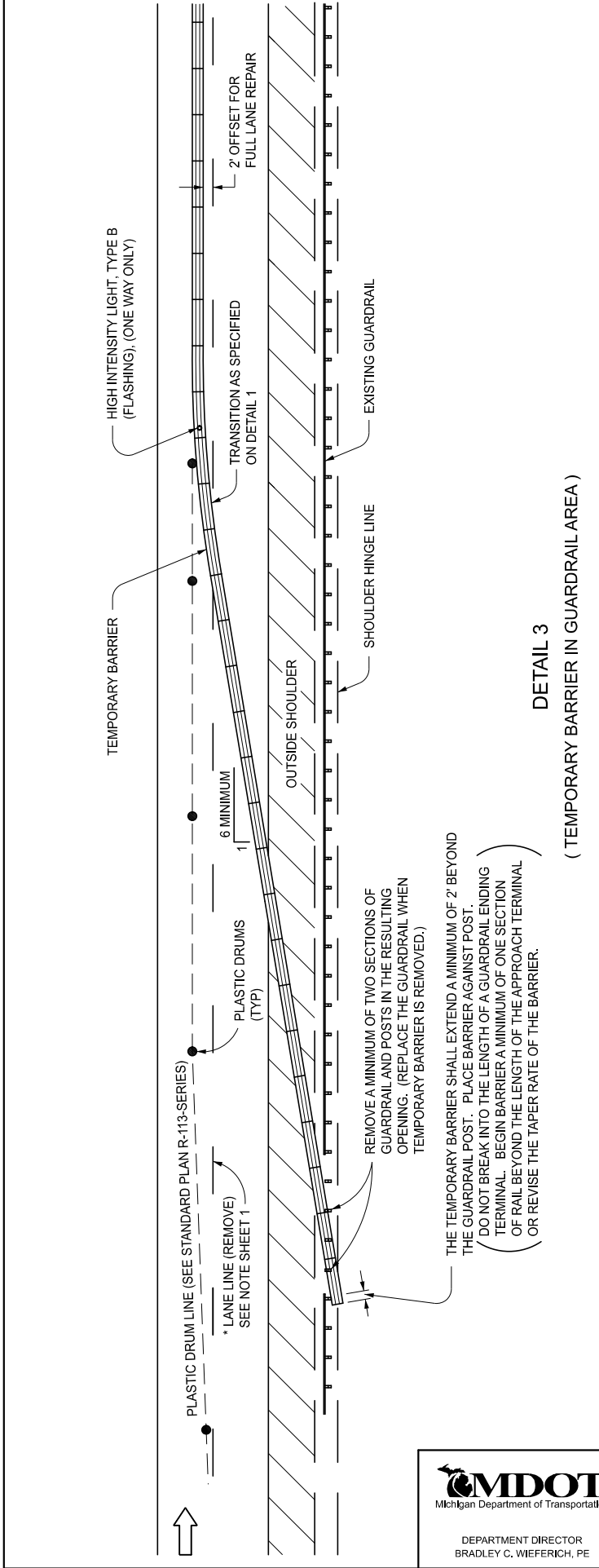
** THE LATERAL OFFSET REFERS TO THE MINIMUM DISTANCE BETWEEN THE EDGE OF THE NEAREST TRAVELED (OPEN) LANE AND THE TRAFFIC SIDE OF THE ENDING OF THE TEMPORARY BARRIER. THE BARRIER SHALL BE EXTENDED TO THE EDGE OF THE SHOULDER. EVEN IF THIS DISTANCE IS BEYOND THE LATERAL OFFSET. IF THE LATERAL OFFSET DISTANCE IS GREATER THAN THE DISTANCE TO THE SHOULDER HINGE LINE, USE DETAIL 2.

DETAIL 1



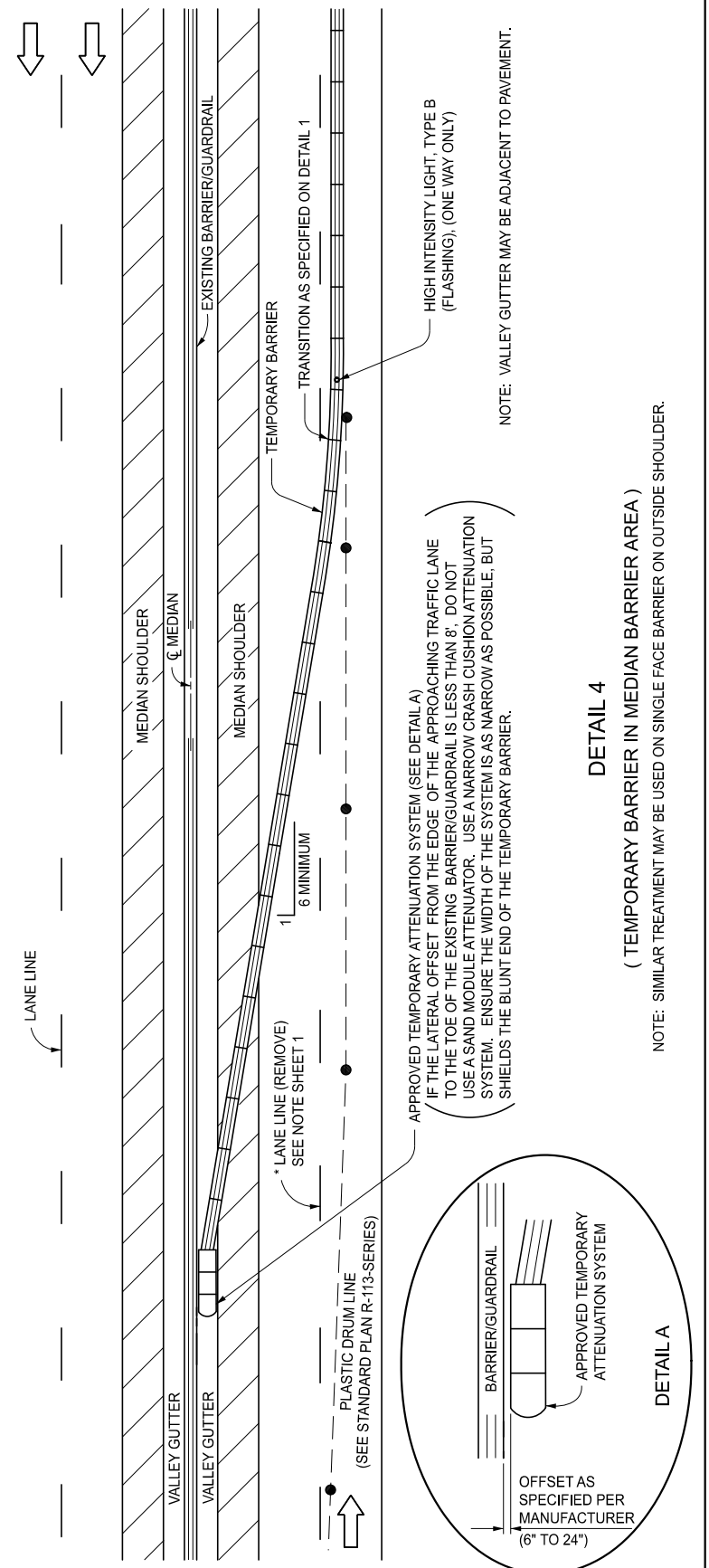
DETAIL 2

WHEN DETAIL 1 CANNOT BE USED BECAUSE OF RESTRICTED LATERAL OFFSET



DETAIL 3

(TEMPORARY BARRIER IN GUARDRAIL AREA)



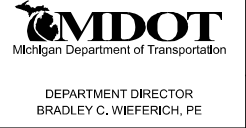
DETAIL 4

(TEMPORARY BARRIER IN MEDIAN BARRIER AREA)

NOTE: VALLEY GUTTER MAY BE ADJACENT TO PAVEMENT.

APPROVED BY: _____
DIRECTOR, BUREAU OF FIELD SERVICES

APPROVED BY: _____
DIRECTOR, BUREAU OF DEVELOPMENT



STANDARD PLAN FOR
PLACEMENT OF TEMPORARY CONCRETE BARRIER
AND TEMPORARY STEEL BARRIER

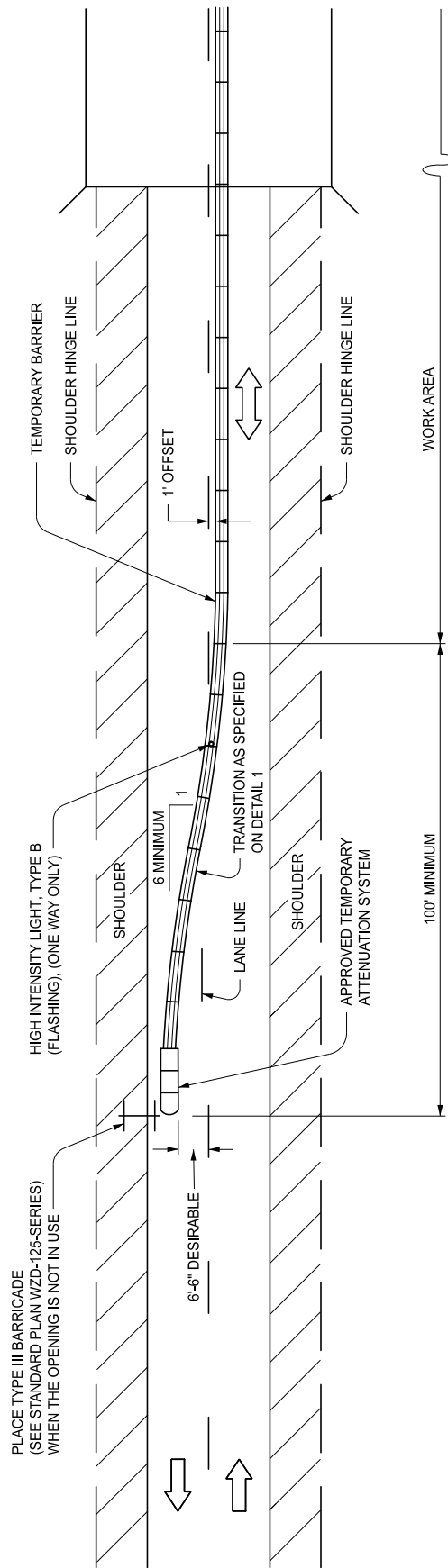
(SPECIAL DETAIL)	08/25/2015	R-126-1	SHEET 1 OF 5
FHWA APPROVAL	PLAN DATE		



STANDARD PLAN FOR
PLACEMENT OF TEMPORARY CONCRETE BARRIER
AND TEMPORARY STEEL BARRIER

(SPECIAL DETAIL)	08/25/2015	R-126-1	SHEET 2 OF 5
FHWA APPROVAL	PLAN DATE		

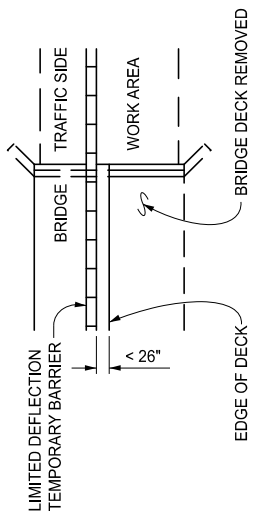
SECT



DETAIL 5
(TRAILING END OF TEMPORARY BARRIER ON TWO-WAY ROADWAY)

DETAIL 5 NOTES:
WHERE CONTROLLED BI-DIRECTIONAL TRAFFIC IS MAINTAINED ON A SINGLE LANE, THE PLACING OF TEMPORARY BARRIER ON THE APPROACHING END OF A LANE CLOSURE SHALL BE THE SAME AS SPECIFIED ON DETAIL 1, 2 OR 3. THE TRAILING END OF THE LANE CLOSURE SHALL BE AS SPECIFIED ON DETAIL 5. THE PLASTIC DRUM LINE TAPER WILL BE ACCORDING TO THE CURRENT MICHIGAN MANUAL OF UNIFORM TRAFFIC CONTROL DEVICES OR WITH THE MAINTAINING TRAFFIC PROVISIONS IN THE PLANS OR PROPOSAL. THE TEMPORARY BARRIER END SECTION ON THE TRAILING END OF THE TEMPORARY BARRIER SHALL BE PARALLEL WITH THE TRAFFIC.

BARRIER ADJACENT TO A PRECIPITOUS DROP-OFF:
WHEN THERE IS 26° OR MORE Laterally BETWEEN THE TOE OF THE BARRIER ON THE CONSTRUCTION SIDE AND THE DROP-OFF, STANDARD TEMPORARY CONCRETE BARRIER OR TEMPORARY STEEL BARRIER MEETING MDOT SPECIFICATIONS MAY BE USED NEAR THE DROP-OFF. NO SPECIAL HARDWARE OR PROCEDURES ARE NECESSARY, HOWEVER, WHEN THERE IS LESS THAN 26° Laterally BETWEEN THE TOE OF THE BARRIER ON THE CONSTRUCTION SIDE AND THE DROP-OFF, AN APPROPRIATE LIMITED DEFLECTION TEMPORARY BARRIER DETAIL MEETING THE REQUIREMENTS OF STANDARD PLAN R-53-SERIES, OR AN APPROVED ALTERNATIVE, MUST BE USED.



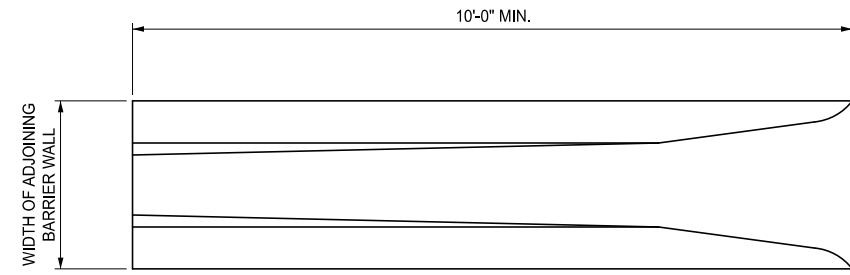
TEMPORARY BARRIER ADJACENT TO A PRECIPITOUS DROP-OFF

REFER TO STANDARD PLAN R-53-SERIES FOR ADDITIONAL INFORMATION REGARDING LIMITED DEFLECTION TEMPORARY BARRIER DETAILS.

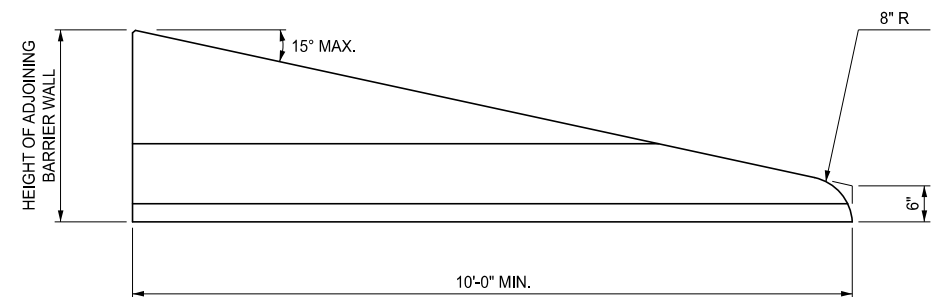
MDOT
Michigan Department of Transportation

DEPARTMENT DIRECTOR
BRADLEY C. WIEFERICH, PE

STANDARD PLAN FOR PLACEMENT OF TEMPORARY CONCRETE BARRIER AND TEMPORARY STEEL BARRIER			
(SPECIAL DETAIL)	08/25/2015	R-126-1	SHEET 3 OF 5
FHWA APPROVAL	PLAN DATE		



TOP VIEW



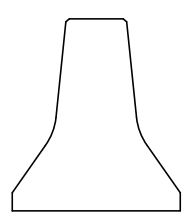
ELEVATION VIEW

TEMPORARY CONCRETE BARRIER SLOPED END SECTION

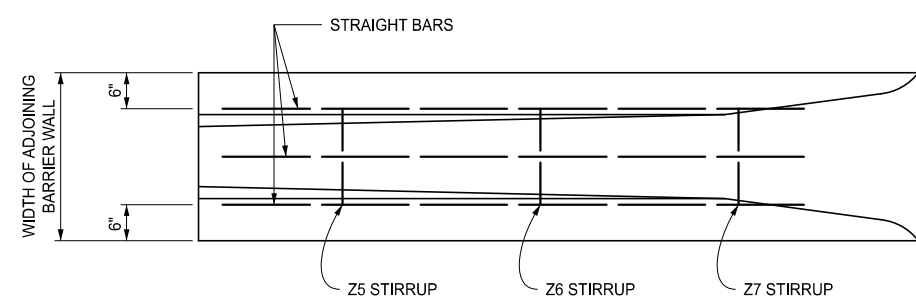
NOTES:
CONNECTIONS AND HARDWARE USED TO CONNECT THE SLOPED END SECTION TO TEMPORARY CONCRETE BARRIER (TCB) MUST MATCH CONNECTIONS BETWEEN TCB SEGMENTS AND MEET THE REQUIREMENTS OF NCHRP 350 OR MASH (TEST LEVEL 3 OR HIGHER).

STIRRUP DETAILS PROVIDED FOR ILLUSTRATION PURPOSES. ACTUAL STIRRUP DETAILS WILL VARY BASED ON END SECTION SHAPE, DIMENSIONS, AND STIRRUP LOCATION.

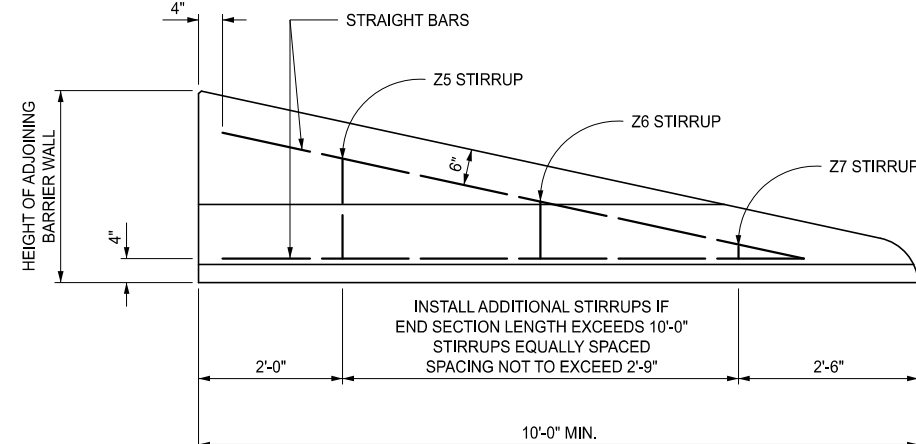
STIRRUPS MUST BE DESIGNED TO PROVIDE A MINIMUM OF 2 INCHES OF CLEAR COVER FROM ANY LOCATION ON THE SURFACE OF THE END SECTION.



END VIEW
MUST MATCH CROSS-SECTIONAL SHAPE AND DIMENSIONS OF ADJOINING BARRIER WALL



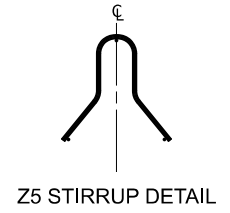
TOP VIEW



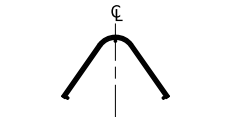
ELEVATION VIEW

STEEL REINFORCEMENT FOR TEMPORARY CONCRETE BARRIER SLOPED END SECTION

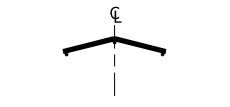
NOTE: #5 BARS SHALL BE USED FOR ALL STRAIGHT BARS AND STIRRUPS



Z5 STIRRUP DETAIL



Z6 STIRRUP DETAIL



Z7 STIRRUP DETAIL

MDOT
Michigan Department of Transportation

DEPARTMENT DIRECTOR
BRADLEY C. WIEFERICH, PE

STANDARD PLAN FOR PLACEMENT OF TEMPORARY CONCRETE BARRIER AND TEMPORARY STEEL BARRIER			
(SPECIAL DETAIL)	08/25/2015	R-126-1	SHEET 4 OF 5
FHWA APPROVAL	PLAN DATE		

SECT

NOTES:

THE DETAILS IN STANDARD PLAN R-126-SERIES ARE NOT APPLICABLE TO PORTABLE WATER-FILLED BARRIER. PLACEMENT OF PORTABLE WATER-FILLED BARRIER SHALL BE AS SHOWN ON THE PLANS OR AS DIRECTED BY THE ENGINEER.

THE SEQUENCE OF BARRIER PLACEMENT SHALL BE IN THE DIRECTION OF TRAFFIC FLOW. BARRIER REMOVAL SHALL BE IN THE DIRECTION OPPOSITE TO TRAFFIC FLOW.

TEMPORARY BARRIER ENDINGS SUBJECT TO APPROACH TRAFFIC AND NOT TERMINATED BEHIND GUARDRAIL MUST BE ATTENUATED OR, IF APPLICABLE, SHIELDED WITH A TEMPORARY CONCRETE BARRIER SLOPED END SECTION.

DETAIL 2 WILL BE USED WHEN THERE IS NO EXISTING GUARDRAIL OR BARRIER AVAILABLE AS SPECIFIED IN DETAILS 3 OR 4.

THE LOCATION OF THE HIGH INTENSITY LIGHT, TYPE B (FLASHING) SPECIFIED IN DETAIL 1, SHALL APPLY TO DETAILS 2, 3, 4, AND 5. ALSO THE HIGH INTENSITY LIGHT, TYPE B SHALL BE FASTENED ON THE TOP OF THE BARRIER.


THE BARRIER FLARE RATE SHALL BE AT LEAST 6" OF RUN FOR EVERY FOOT OF OFFSET.


EXACT LATERAL PLACEMENT OF BARRIER MUST BE SPECIFIED ON THE PLANS OR IN THE PROPOSAL. BARRIER POSITION SPECIFIED IS DESIRABLE WHEN WORK AREA INVOLVES THE FULL WIDTH OF THE CLOSED LANE. WHEN PARTIAL LANE WORK IS INVOLVED, OR SHOULDER WORK ONLY, BARRIER SHOULD BE SET INSIDE CLOSED LANE, AS ALLOWED BY WORK AREA, WITH 2' OR MORE OFFSET DESIRABLE TO LANE LINE.

IN DETAIL 3, EXISTING GUARDRAIL POSTS ARE REMOVED TO FACILITATE PLACING OF TEMPORARY BARRIER BEHIND THE GUARDRAIL. THE DEGREE OF THE BARRIER DEPARTURE ANGLE WILL DETERMINE THE AMOUNT OF BEAM GUARDRAIL AND THE NUMBER OF POSTS TO BE REMOVED.

THE HIGH INTENSITY LIGHT, TYPE B SHALL BE OMITTED WHERE TWO-WAY TRAFFIC IS MAINTAINED ON ONE LANE AND IS CONTROLLED BY TRAFFIC SIGNALS.

IN DETAIL 1, WHEN USING STEEL BARRIER, ATTACH AN APPROVED TEMPORARY ATTENUATION SYSTEM TO TEMPORARY STEEL BARRIER. ATTACHING A TEMPORARY CONCRETE BARRIER SLOPED END SECTION TO TEMPORARY STEEL BARRIER WILL BE PROHIBITED. WHEN USING CONCRETE BARRIER, ATTACH TEMPORARY CONCRETE BARRIER SLOPED END SECTION OR AN APPROVED TEMPORARY ATTENUATION SYSTEM TO THE TEMPORARY CONCRETE BARRIER.

 DEPARTMENT DIRECTOR BRADLEY C. WIEFERICH, PE	STANDARD PLAN FOR			SHEET OF
	(SPECIAL DETAIL) FHWA APPROVAL	00/00/0000 PLAN DATE		

 DEPARTMENT DIRECTOR BRADLEY C. WIEFERICH, PE	STANDARD PLAN FOR PLACEMENT OF TEMPORARY CONCRETE BARRIER AND TEMPORARY STEEL BARRIER			SHEET 5 OF 5 SECT
	(SPECIAL DETAIL) FHWA APPROVAL	08/25/2015 PLAN DATE	R-126-I	