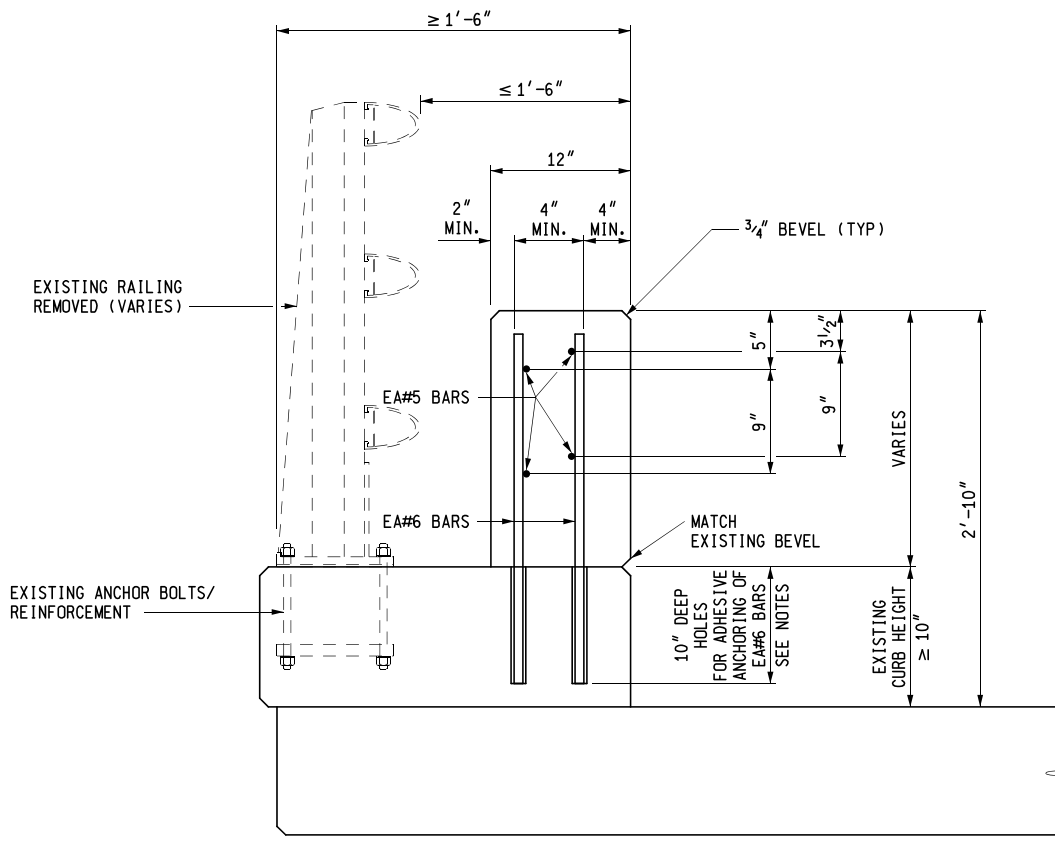


BRIDGE BARRIER RAILING ELEVATION



SECTION A-A



PREPARED BY
DESIGN DIVISION

DRAWN BY: B.L.T.

CHECKED BY: V.Z.

DEPARTMENT DIRECTOR
Paul C. Ajegba

APPROVED BY: Matthew J. Chynoweth, P.E. Matthew J. Chynoweth
DIRECTOR, BUREAU OF BRIDGES AND STRUCTURES
Oct 14 2021 4:28 PM

APPROVED BY: Gregg Brunner, P.E. Gregg Brunner
DIRECTOR, BUREAU OF FIELD SERVICES
Oct 14 2021 12:30 PM

APPROVED BY: Bradley C. Wiefelich Bradley C. Wiefelich
DIRECTOR, BUREAU OF DEVELOPMENT
Oct 14 2021 10:59 AM

MICHIGAN DEPARTMENT OF TRANSPORTATION
BUREAU OF DEVELOPMENT STANDARD PLAN FOR

BRIDGE RAILING,
CONCRETE BLOCK RETROFIT
(CURB HEIGHT ≥ 10")

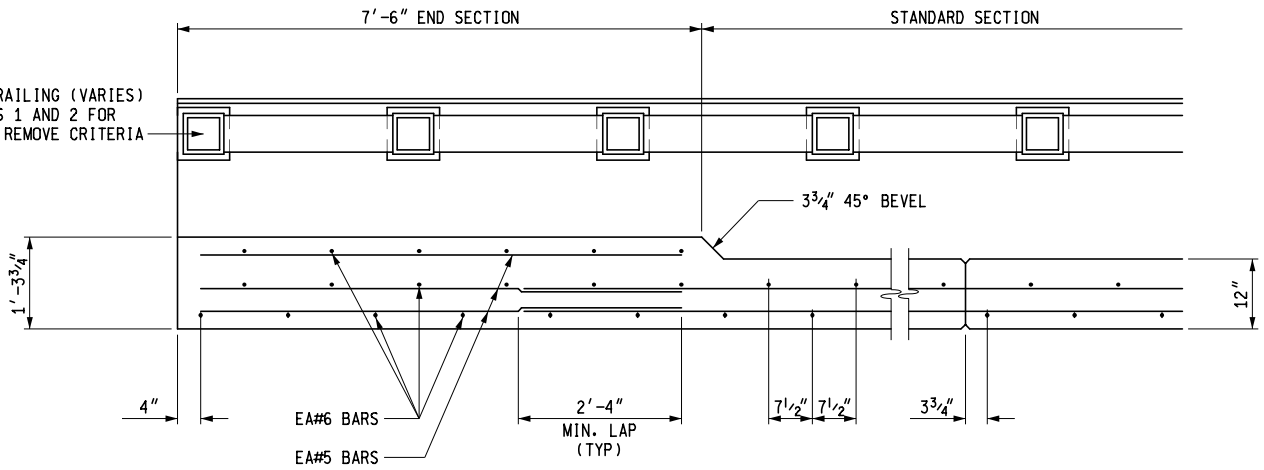
4-7-2022
F.H.W.A. APPROVAL

9-29-2021
PLAN DATE

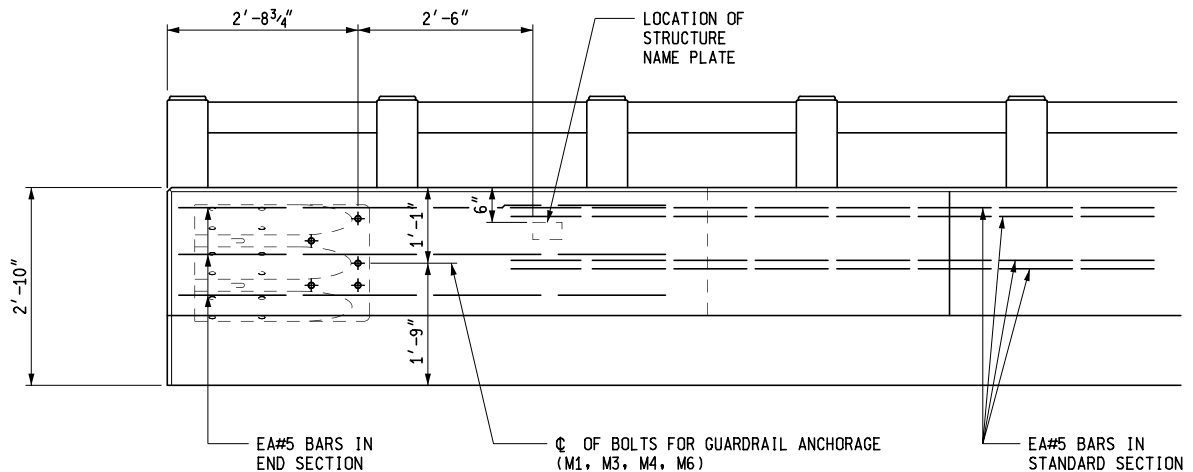
B-50-A

SHEET
1 OF 3

EXISTING RAILING (VARIES)
SEE SHEETS 1 AND 2 FOR
REMAIN OR REMOVE CRITERIA



PLAN VIEW



ELEVATION VIEW
SHOWING HORIZONTAL REINFORCEMENT

NOTES:

CONCRETE BLOCK RETROFIT IS INTENDED FOR PLACEMENT ON TOP OF CURBS/
SIDEWALKS $\geq 10''$ THICK.

DETAILS SHOWN ARE IN ACCORDANCE WITH CURRENT AASHTO SPECIFICATIONS.

ALL WORK AND MATERIAL SHALL BE IN ACCORDANCE WITH THE STANDARD
SPECIFICATIONS.

MICHIGAN DEPARTMENT OF TRANSPORTATION
BUREAU OF DEVELOPMENT STANDARD PLAN FOR
**BRIDGE RAILING,
CONCRETE BLOCK RETROFIT**
(CURB HEIGHT $\geq 10''$)

4-7-2022
F.H.W.A. APPROVAL

9-29-2021
PLAN DATE

B-50-A

SHEET
3 OF 3