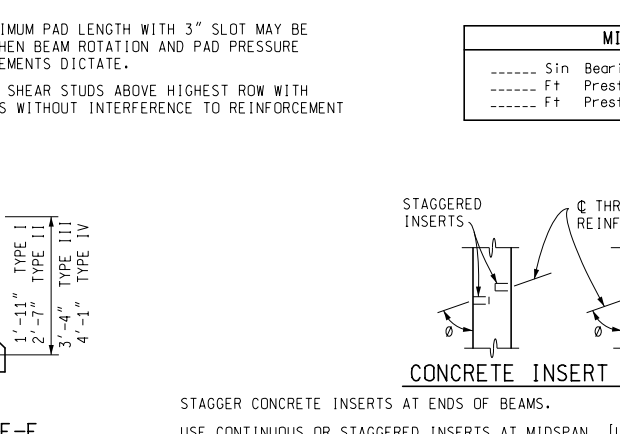
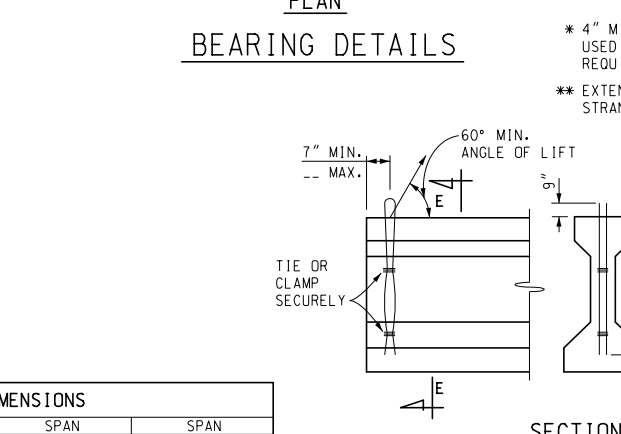
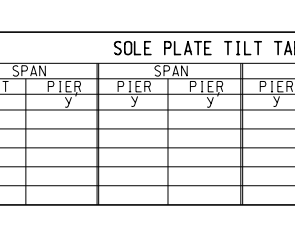
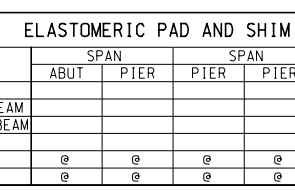
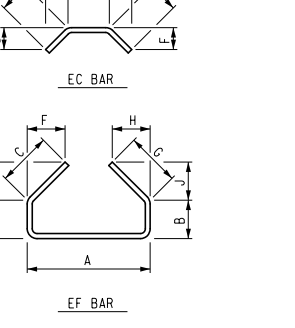
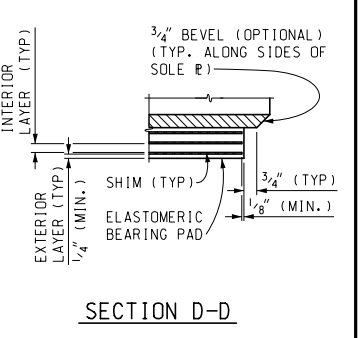
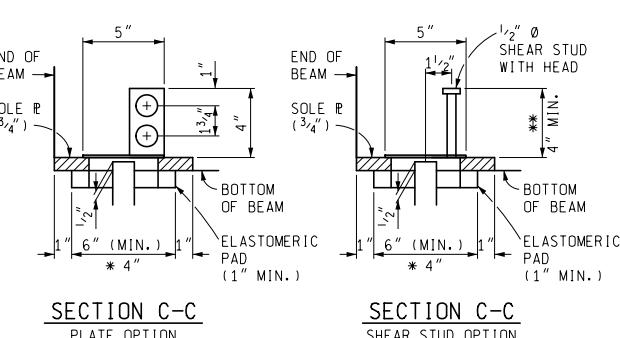
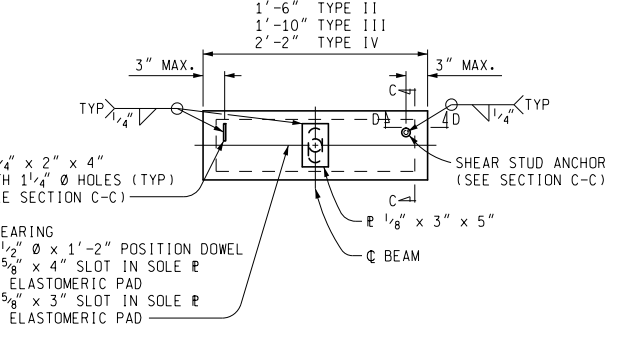
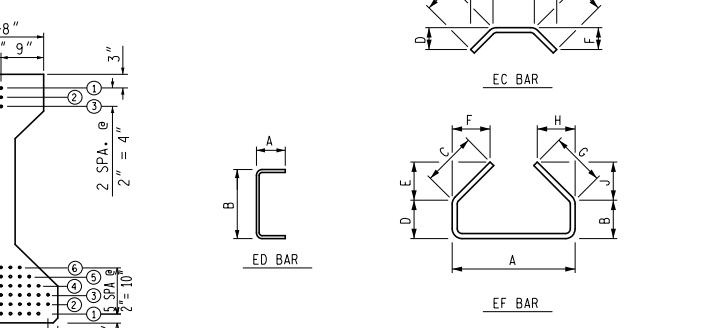
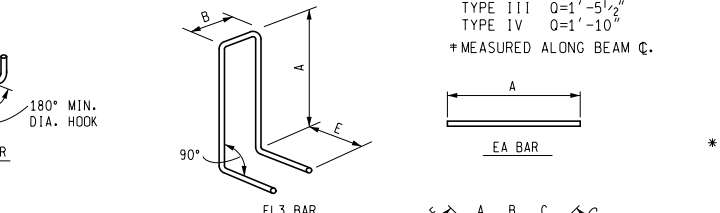
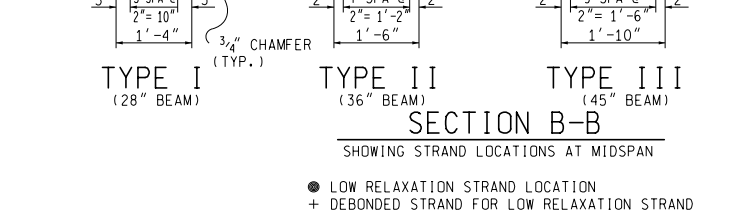
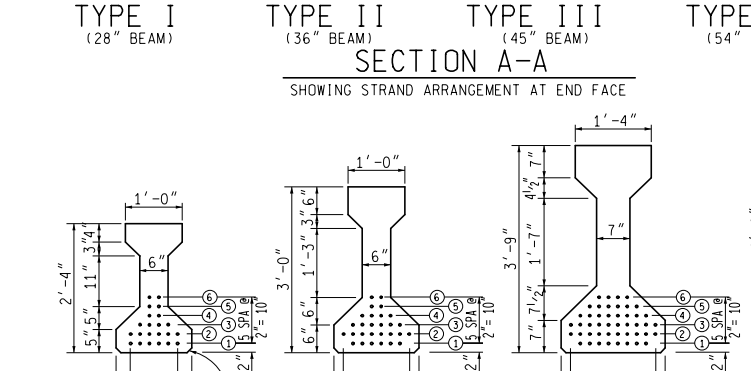
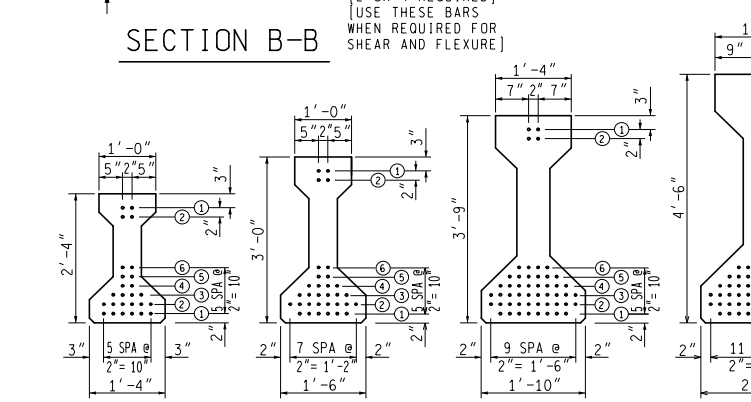
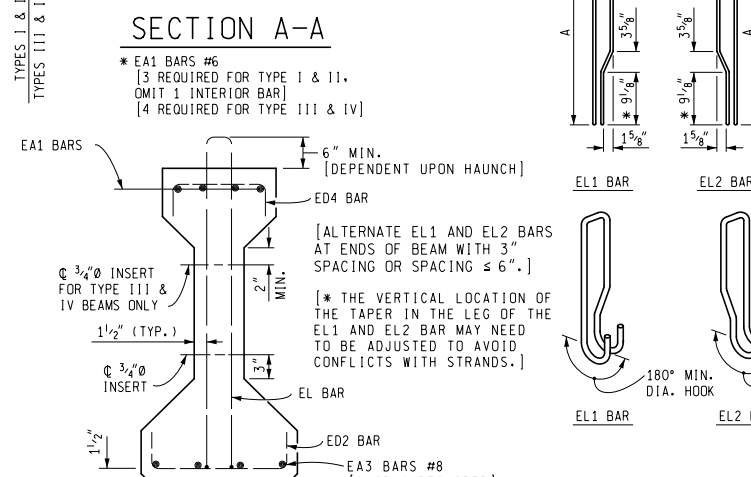
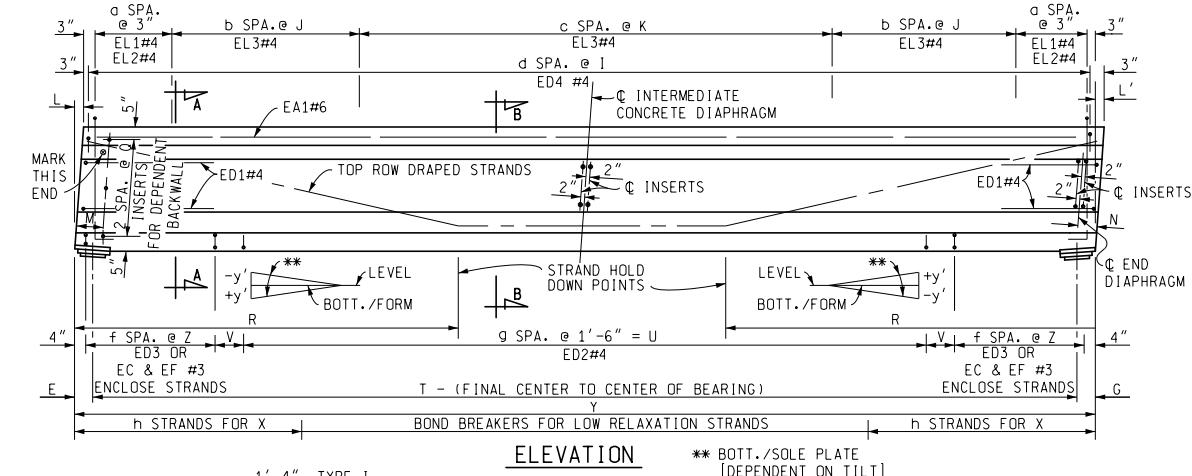


BAR DIMENSIONS		BEAM TYPE			
BAR	DIM.	I	II	III	IV
EA1#6	A	Y-3"	Y-3"	Y-3"	Y-3"
EA2#6	A	--	--	Y-3"	Y-3"
EA3#8	A	Y-3"	Y-3"	Y-3"	Y-3"
EC#3	A	4"	4"	6"	6"
	B	4"	6"	6"	10"
	C	4"	4"	6"	6"
	D	4"	4"	6"	6"
	E	5 1/2"	5 1/2"	8 1/2"	8 1/2"
	F	4"	4"	6"	6"
	G	5 1/2"	5 1/2"	8 1/2"	8 1/2"
ED1#4	A	3'-4"	4'-0"	4'-9"	5'-6"
	B	2 1/2"	2 1/2"	3 1/2"	4 1/2"
ED2#4	A	3"	3"	5"	5"
	B	11 1/2"	1'-3 1/2"	1'-7 1/2"	1'-11 1/2"
ED3#3	A	1'-0"	1'-2"	1'-4"	1'-5"
	B	3 1/2"	3 1/2"	5 1/2"	5 1/2"
ED4#4	A	2"	4"	5"	6"
	B	8"	8"	1'-0"	1'-4"
EF#3	A	11 1/2"	1'-3 1/2"	1'-7 1/2"	1'-11 1/2"
	B	3 1/2"	3 1/2"	5 1/2"	5 1/2"
	C	5 1/2"	5 1/2"	8 1/2"	8 1/2"
	D	3 1/2"	3 1/2"	5 1/2"	5 1/2"
	E	4"	4"	6"	6"
	F	4"	4"	6"	6"
	G	5 1/2"	5 1/2"	8 1/2"	8 1/2"
	H	4"	4"	6"	6"
	J	4"	4"	6"	6"
	K	4"	4"	6"	6"
EL1#4	A	2'-8 1/2"	3'-4 1/2"	4'-1 1/2"	4'-10 1/2"
	B	3 1/2"	3 1/2"	4 3/4"	5 3/4"
EL2#4	A	6" HOOK	6" HOOK	6" HOOK	6" HOOK
	B	2'-8 1/2"	3'-4 1/2"	4'-1 1/2"	4'-10 1/2"
EL3#4	A	3 1/2"	3 1/2"	4 3/4"	5 3/4"
	B	6"	6"	6"	6"

BEAM DIMENSIONS	
MARK TYPE	NO. REQ.
a	
b	
c	
d	
e	
f	
g	
h	
i	
j	
k	
l	
m	
n	
o	
p	
q	
r	
s	
t	
u	
v	
w	
x	
y	
z	
APPROX. WEIGHT	



MISCELLANEOUS QUANTITIES

..... Sin	Bearing, Elastomeric	... inch
..... Ft	Prest Conc 1 Beam, Furn.	... inch
..... Ft	Prest Conc 1 Beam, Erect	... inch

STAGGER CONCRETE INSERTS AT ENDS OF BEAMS.
 USE CONTINUOUS OR STAGGERED INSERTS AT MIDSPAN. [USE FOR CONCRETE DIAPHRAGMS]
 USE STAGGERED INSERTS AT MIDSPAN AND INDEPENDENT BACKWALLS, CAST PERPENDICULAR TO BEAM WEBS. [USE WITH STEEL DIAPHRAGMS WHEN REQUIRED @ ANGLE IS < 80°]
 USE CONTINUOUS HOLE FORMED WITH 1 1/2" I.D. PLASTIC PIPE. [USE WITH STEEL DIAPHRAGMS WHEN REQUIRED @ ANGLE IS ≥ 80° AND AT DEPENDENT BACKWALLS.]
 BEND THREADED REINFORCEMENT FOR STAGGERED INSERTS TO THE REQUIRED @ ANGLE PRIOR TO INSTALLATION. [USE FOR CONCRETE DIAPHRAGMS AND ABUTMENTS WITH DEPENDENT BACKWALLS]
 INSTALLATION OF BENT REINFORCEMENT MAY BE REQUIRED BEFORE BEAM IS ERECTED PRIOR TO INSTALLATION. [USE FOR CONCRETE DIAPHRAGMS AND ABUTMENTS WITH DEPENDENT BACKWALLS]
 OMIT INSERTS ON OUTSIDE OF FASCIA BEAMS EXCEPT AT ABUTMENTS WITH DEPENDENT BACKWALLS.
 USE CONCRETE INSERTS AT MIDSPAN, PIERS AND INDEPENDENT BACKWALL BRIDGES ON THE INTERIOR OF FASCIA BEAMS. OTHER BEAMS MAY USE INSERTS OR CONTINUOUS HOLES.

PLAN REVISIONS

NO.	DATE	AUTH	DESCRIPTION	NO.	DATE	AUTH	DESCRIPTION



NO SCALE

DRAWN BY:
CHK'D BY: CORR BY:
FILE:

DATE:
DESIGN UNIT:
TSC:

CS:
JN:

PRESTRESSED CONCRETE
I-BEAM DETAILS
PC-1N (11-28-2022)

DRAWING SHEET

