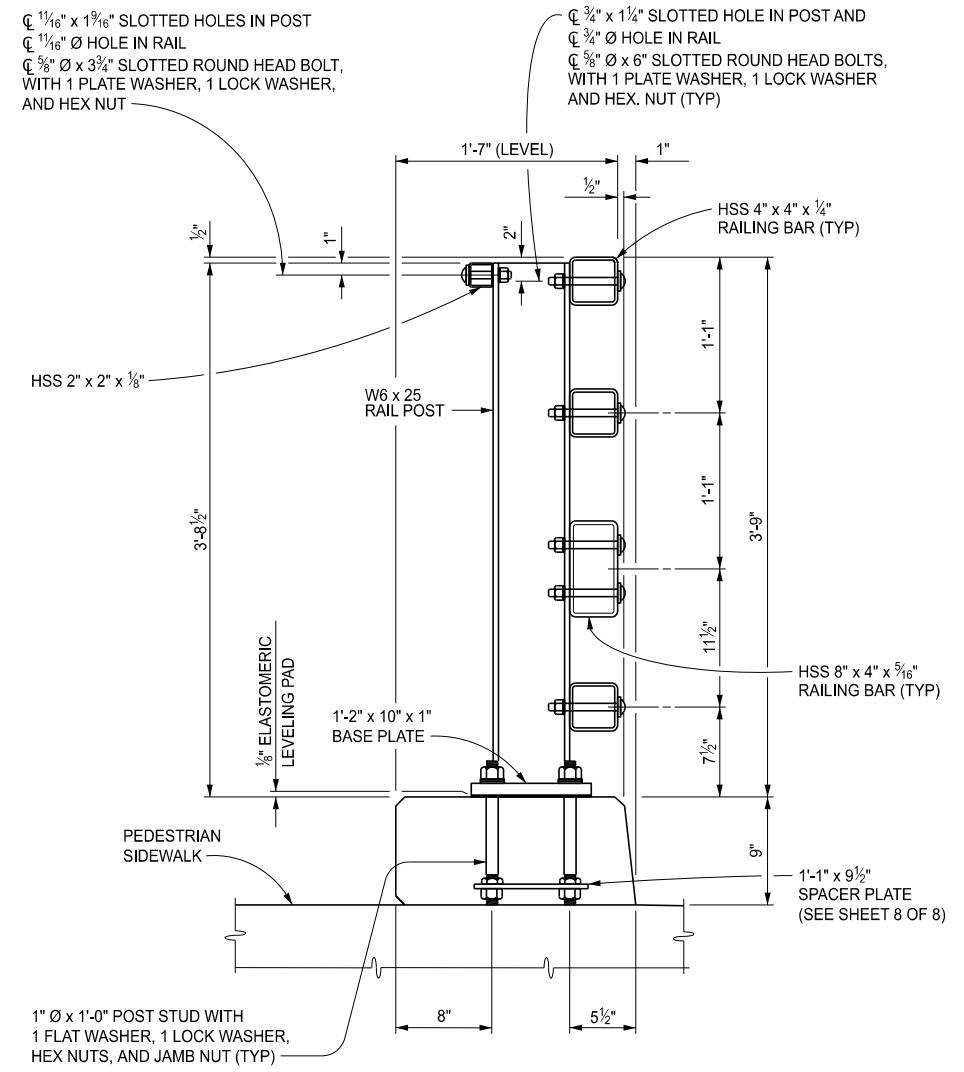
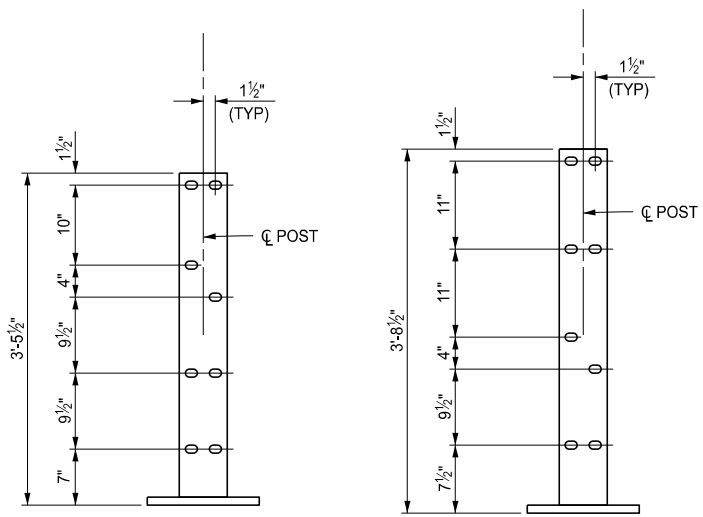


PEDESTRIAN BRIDGE RAILING

BICYCLE BRIDGE RAILING

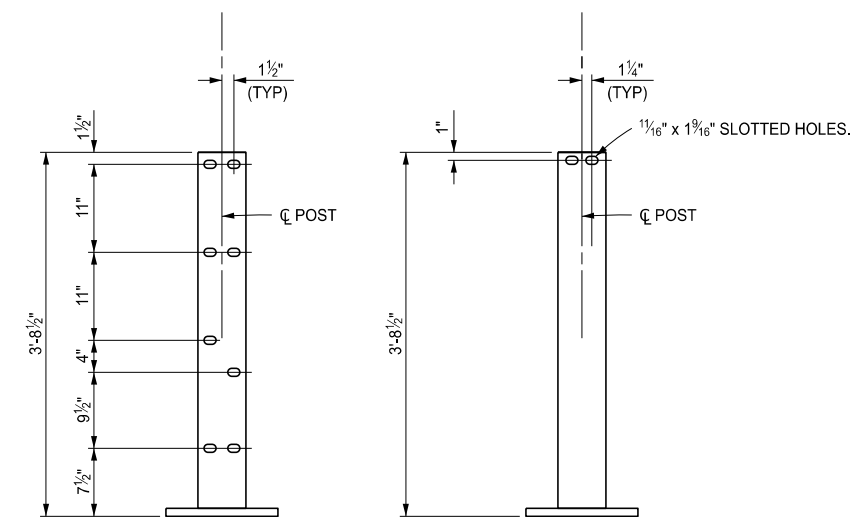


BICYCLE BRIDGE RAILING WITH SIDEWALK



POST DETAILS

NOTES:  
 DETAILS SHOWN ARE ACCORDING TO CURRENT AASHTO SPECIFICATIONS.  
 ALL WORK AND MATERIALS SHALL BE ACCORDING TO THE STANDARD SPECIFICATIONS FOR CONSTRUCTION.  
 THE BICYCLE BRIDGE RAILING SHALL BE USED ONLY WITH THE BRUSH BLOCK SHOWN ON THIS SHEET.  
 FOR LIGHT STANDARD ANCHOR BOLT ASSEMBLY DETAILS, SEE STANDARD PLAN B-103-SERIES.  
 USE THE HSS 2" x 2" x 1/8" RAIL AND CORRESPONDING DETAILS ONLY WHEN A SIDEWALK IS LOCATED BEHIND THE 4 TUBE RAILING. SEE SHEETS 2, 3 AND 4.  
 ALL LABOR, MATERIALS AND EQUIPMENT REQUIRED TO INSTALL THE HSS 2" x 2" x 1/8" RAIL SHALL BE INCLUDED IN THE BID ITEM "BRIDGE RAILING, 4 TUBE".



FRONT FLANGE

BACK FLANGE

POST DETAILS

APPROVED BY: \_\_\_\_\_  
 DIRECTOR, BUREAU OF BRIDGES AND STRUCTURES

APPROVED BY: \_\_\_\_\_  
 DIRECTOR, BUREAU OF FIELD SERVICES

APPROVED BY: \_\_\_\_\_  
 DIRECTOR, BUREAU OF DEVELOPMENT



DEPARTMENT DIRECTOR  
 BRADLEY C. WIEFERICH, PE

STANDARD PLAN FOR  
 BRIDGE RAILING, 4 TUBE

|                  |            |        |                 |
|------------------|------------|--------|-----------------|
| (SPECIAL DETAIL) | 04/16/2024 | B-26-G | SHEET<br>1 OF 8 |
| FHWA APPROVAL    | PLAN DATE  |        |                 |

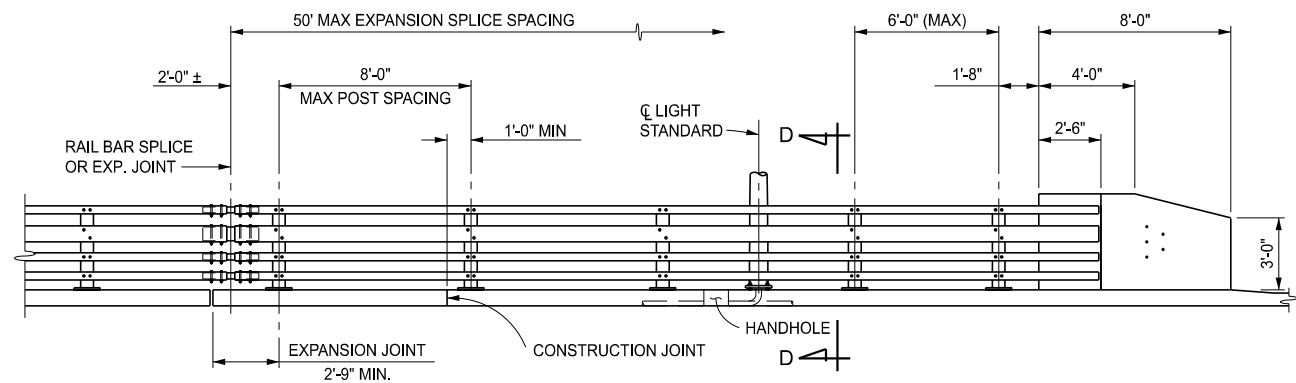


DEPARTMENT DIRECTOR  
 BRADLEY C. WIEFERICH, PE

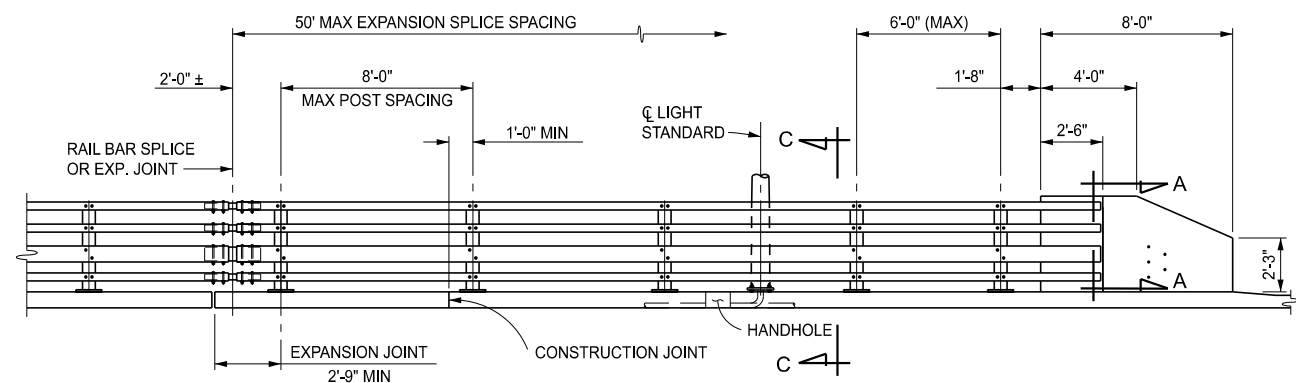
STANDARD PLAN FOR  
 BRIDGE RAILING, 4 TUBE

|                  |            |        |                 |
|------------------|------------|--------|-----------------|
| (SPECIAL DETAIL) | 04/16/2024 | B-26-G | SHEET<br>2 OF 8 |
| FHWA APPROVAL    | PLAN DATE  |        |                 |

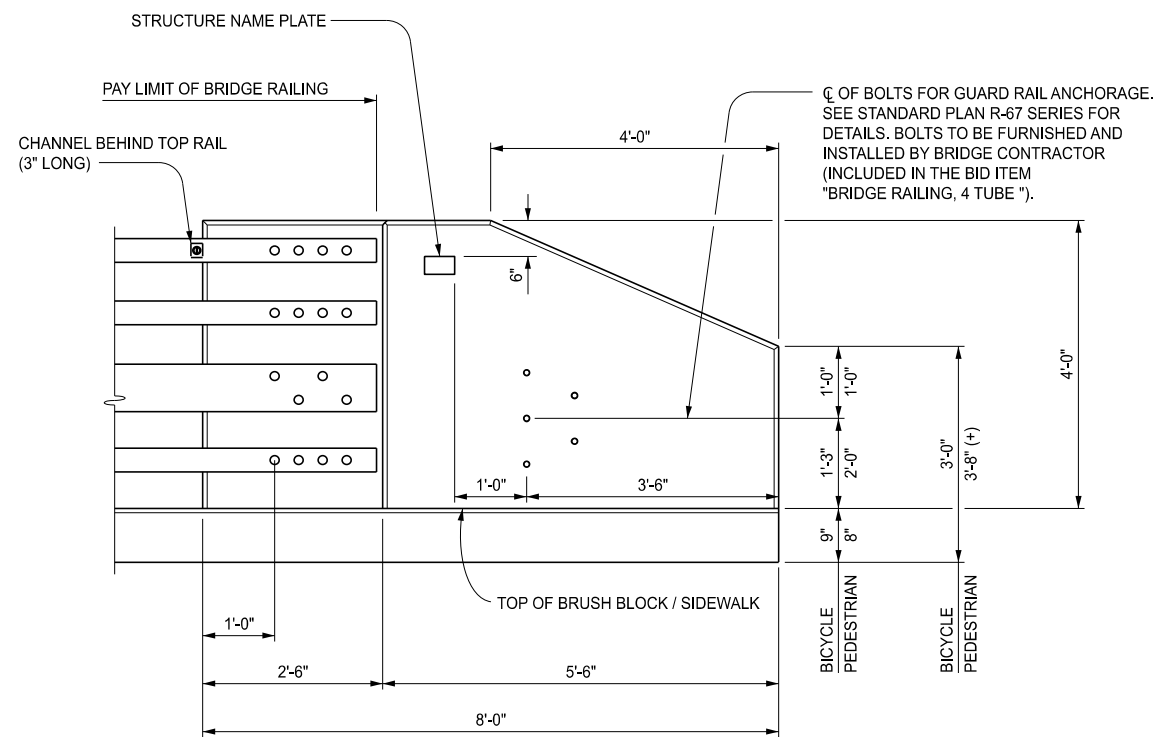
SECT



PEDESTRIAN RAILING

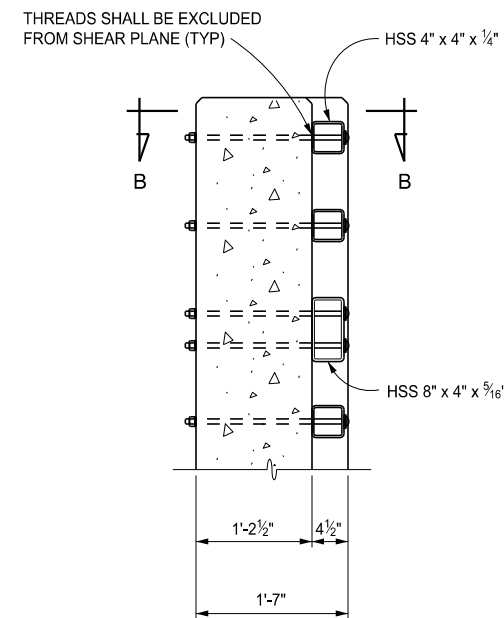


BICYCLE RAILING



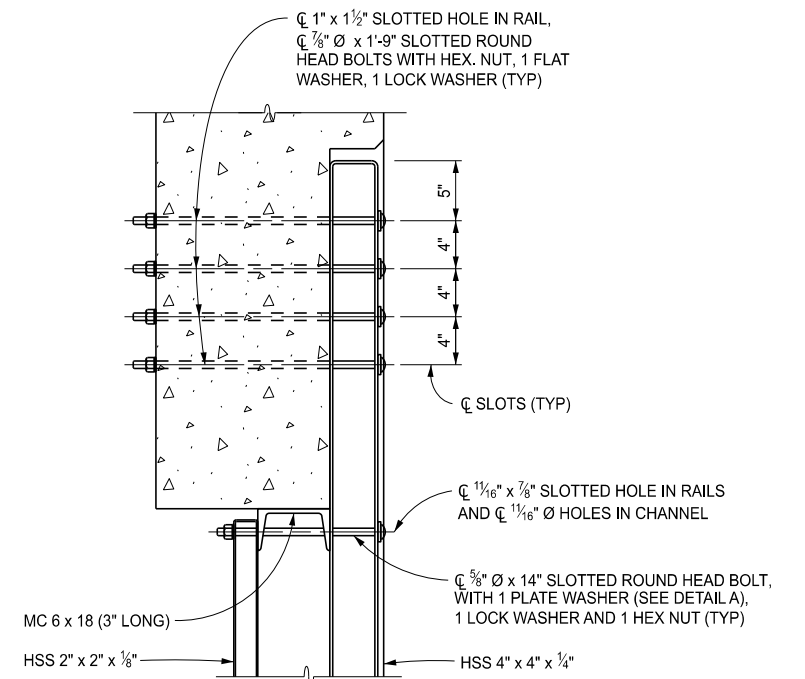
END WALL ELEVATIONS

BICYCLE RAILING SHOWN  
PEDESTRIAN RAILING SIMILAR

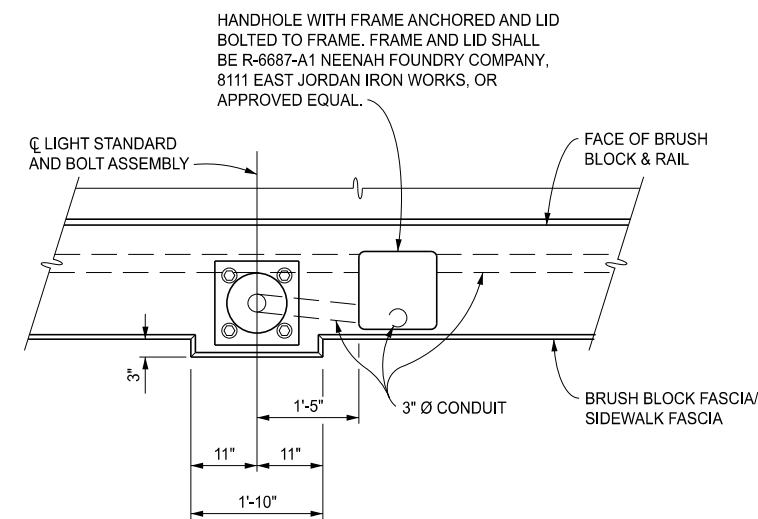


SECTION A-A

BICYCLE RAILING SHOWN  
PEDESTRIAN RAILING SIMILAR

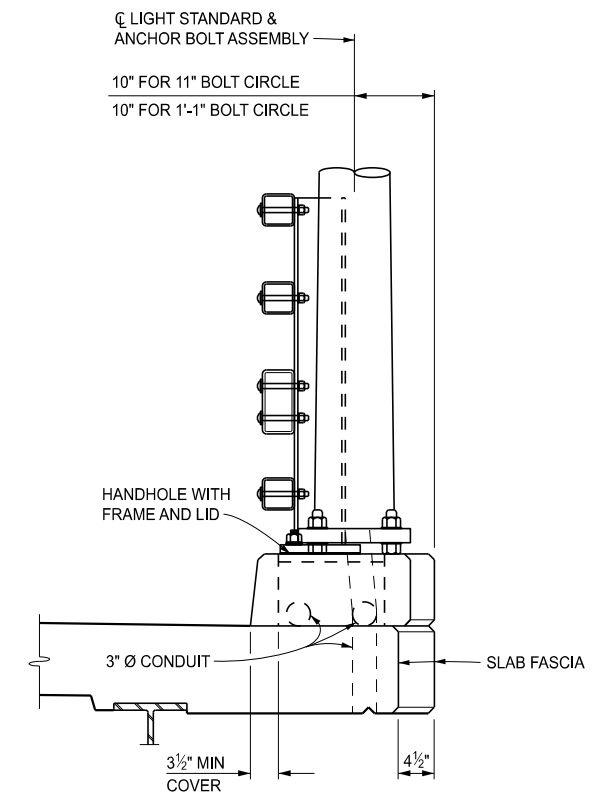


SECTION B-B



PLAN VIEW AT LIGHT STANDARD

BICYCLE RAILING



SECTION C-C

BICYCLE RAILING



DEPARTMENT DIRECTOR  
BRADLEY C. WIEFERICH, PE

(SPECIAL DETAIL)  
FHWA APPROVAL

04/16/2024  
PLAN DATE

B-26-G

SHEET  
3 OF 8



DEPARTMENT DIRECTOR  
BRADLEY C. WIEFERICH, PE

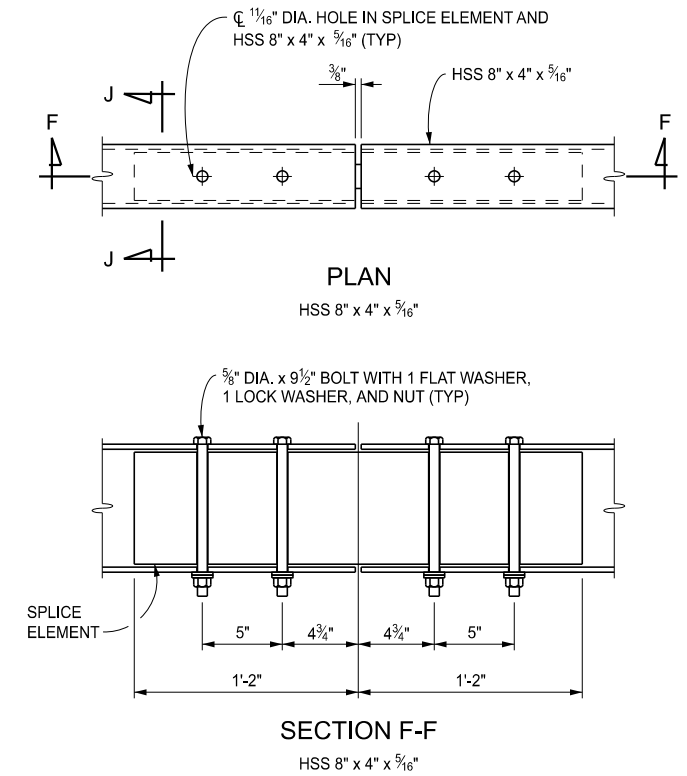
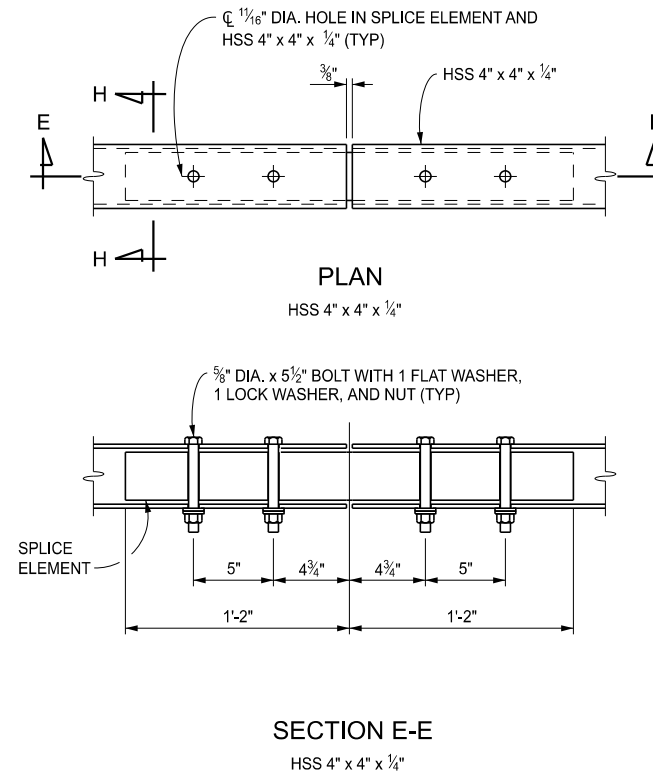
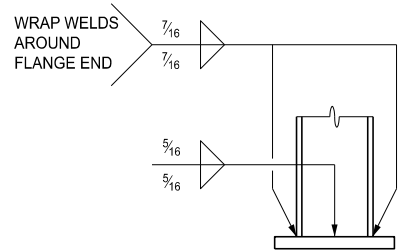
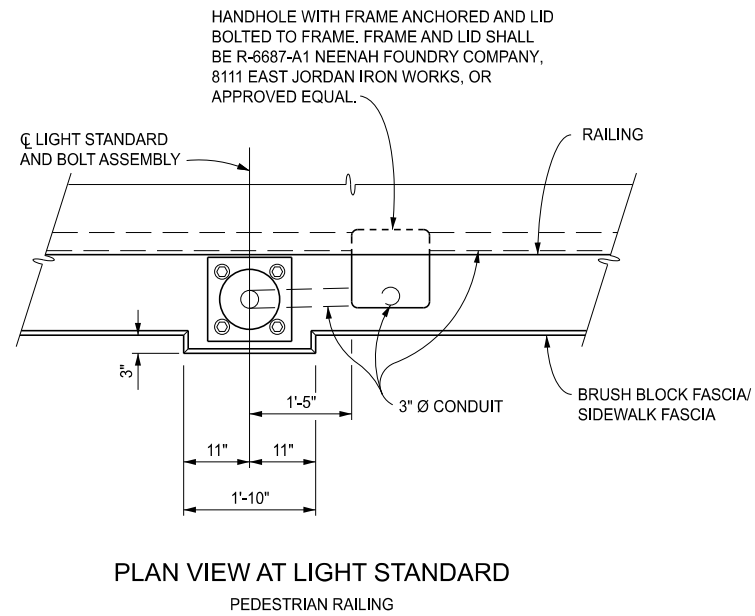
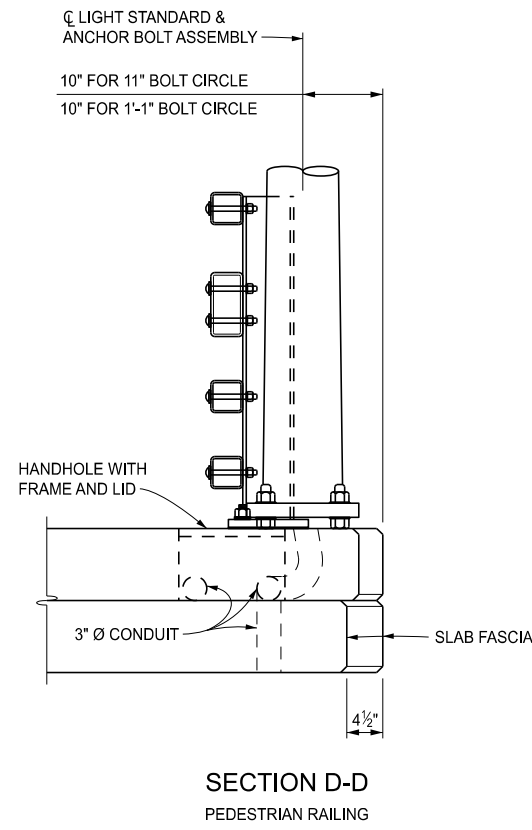
(SPECIAL DETAIL)  
FHWA APPROVAL

04/16/2024  
PLAN DATE

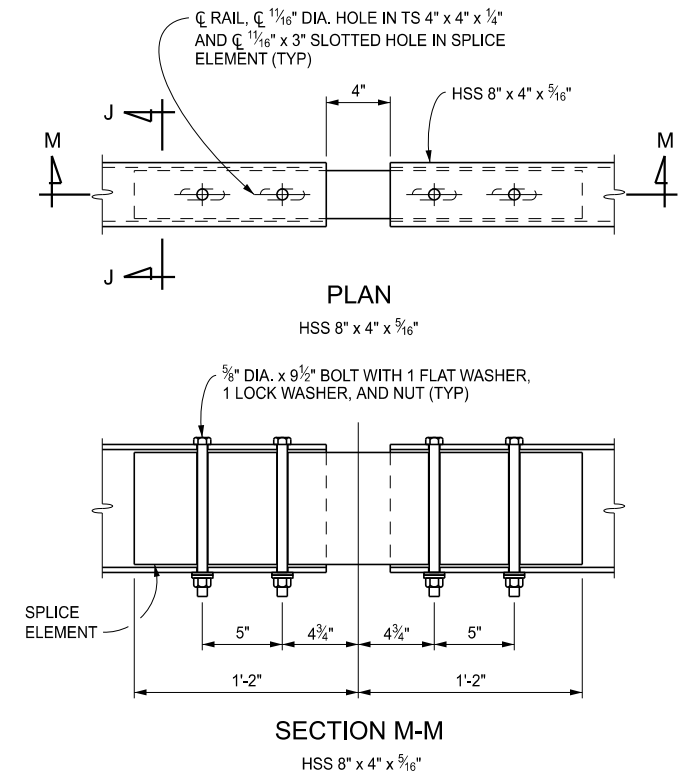
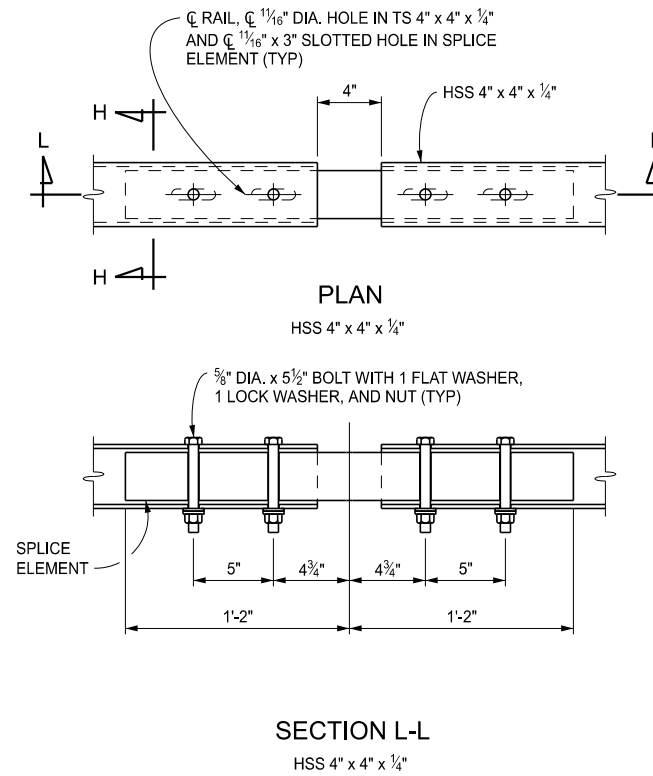
B-26-G

SHEET  
4 OF 8

SECT



FIXED SPLICE DETAILS

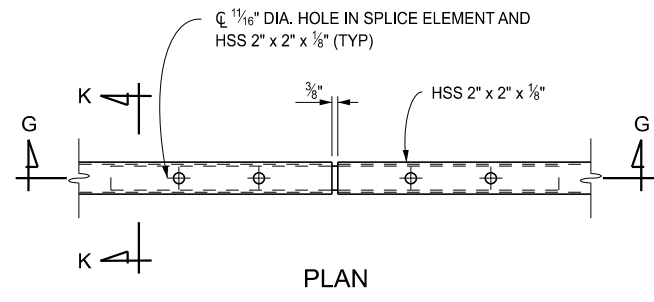


EXPANSION SPLICE DETAILS

|  |   |                         |        |                 |
|--|---|-------------------------|--------|-----------------|
|  | STANDARD PLAN FOR<br>BRIDGE RAILING, 4 TUBE |                         |        | SHEET<br>5 OF 8 |
|  | (SPECIAL DETAIL)<br>FHWA APPROVAL           | 04/16/2024<br>PLAN DATE | B-26-G |                 |

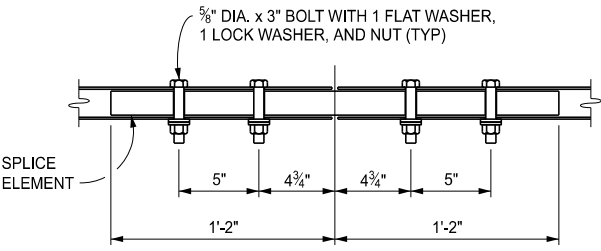
|  |   |                         |        |                 |
|--|---|-------------------------|--------|-----------------|
|  | STANDARD PLAN FOR<br>BRIDGE RAILING, 4 TUBE |                         |        | SHEET<br>6 OF 8 |
|  | (SPECIAL DETAIL)<br>FHWA APPROVAL           | 04/16/2024<br>PLAN DATE | B-26-G |                 |

SECT



PLAN

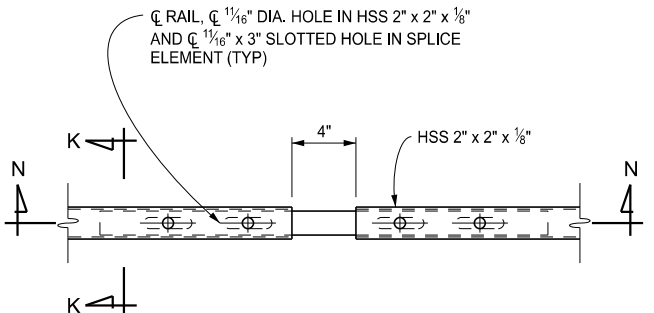
HSS 2" x 2" x 1/8"



SECTION G-G

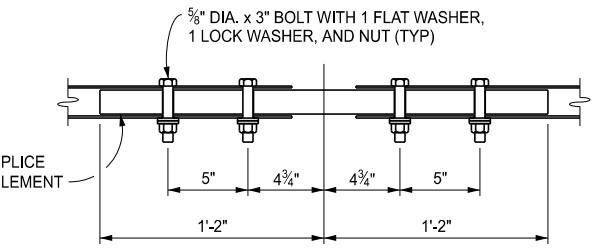
HSS 2" x 2" x 1/8"

FIXED SPLICE DETAILS



PLAN

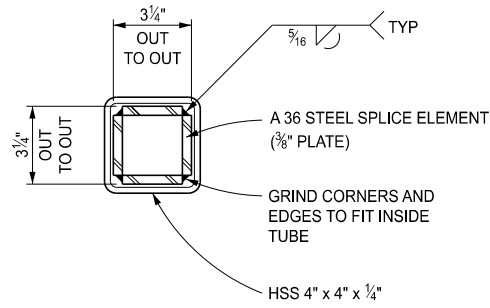
HSS 2" x 2" x 1/8"



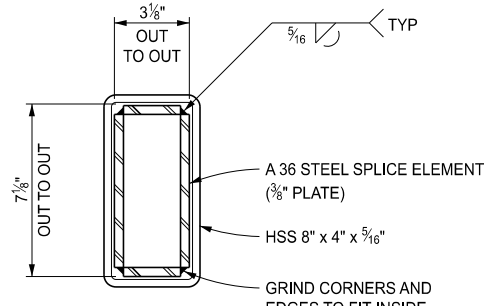
SECTION N-N

HSS 2" x 2" x 1/8"

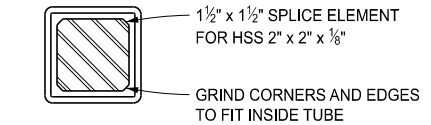
EXPANSION SPLICE DETAILS



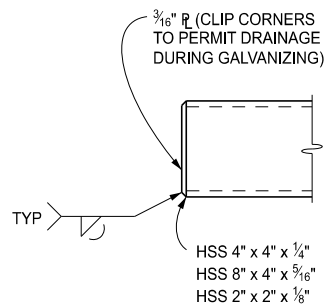
SECTION H-H



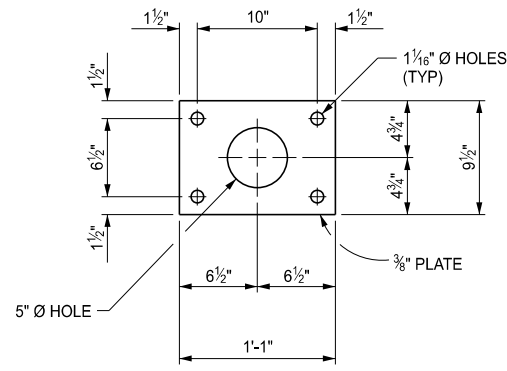
SECTION J-J



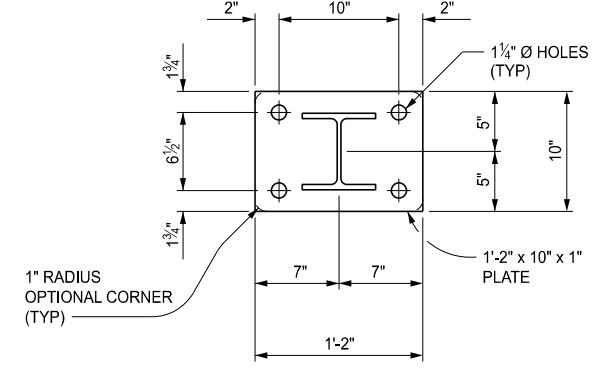
SECTION K-K



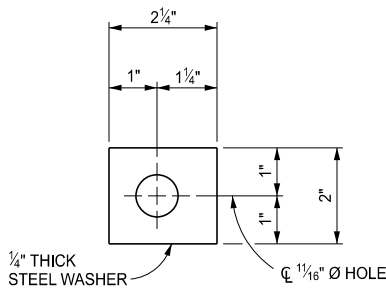
END OF RAIL



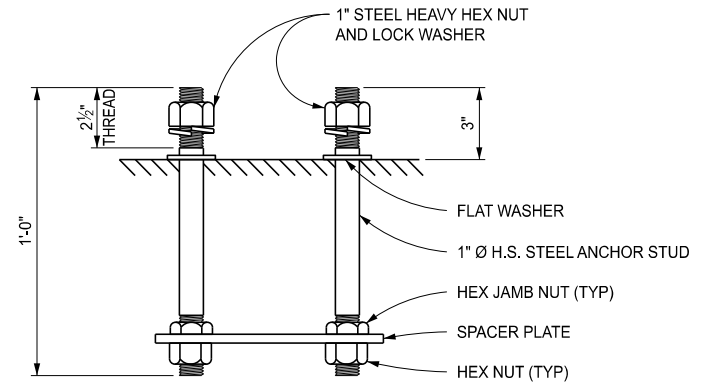
SPACER PLATE PLAN



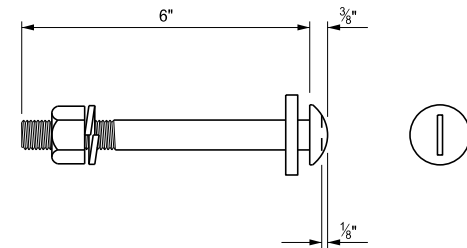
POST & BASE PLATE PLAN



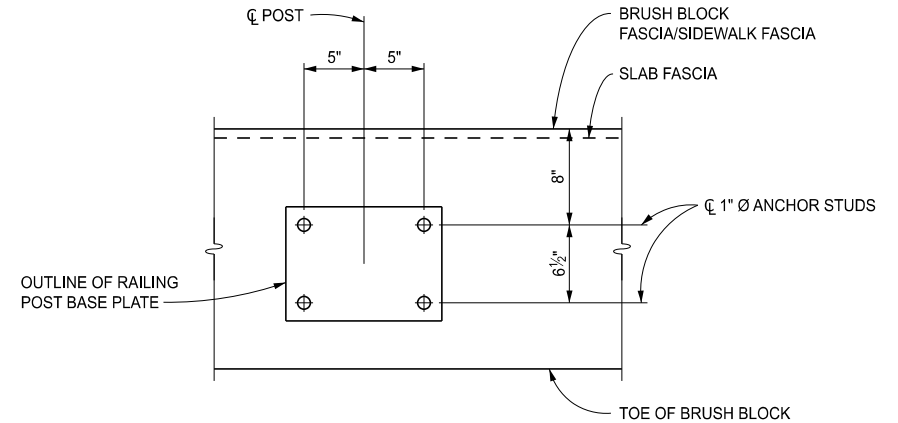
DETAIL A



POST STUD ANCHORAGE



5/8" Ø ROUND HEAD BOLT  
WITH PLATE WASHER (SEE DETAIL A),  
LOCK WASHER AND HEX NUT



ANCHOR STUD LAYOUT

NOTE: SURFACE UNDER POST IS  
TO BE FINISHED LEVEL

|  |   |                         |        |                 |
|--|---|-------------------------|--------|-----------------|
| <p>Michigan Department of Transportation</p> <p>DEPARTMENT DIRECTOR<br/>BRADLEY C. WIEFERICH, PE</p> | STANDARD PLAN FOR<br>BRIDGE RAILING, 4 TUBE |                         |        | SHEET<br>7 OF 8 |
|  | (SPECIAL DETAIL)<br>FHWA APPROVAL           | 04/16/2024<br>PLAN DATE | B-26-G |                 |

|  |   |                         |        |                 |
|--|---|-------------------------|--------|-----------------|
| <p>Michigan Department of Transportation</p> <p>DEPARTMENT DIRECTOR<br/>BRADLEY C. WIEFERICH, PE</p> | STANDARD PLAN FOR<br>BRIDGE RAILING, 4 TUBE |                         |        | SHEET<br>8 OF 8 |
|  | (SPECIAL DETAIL)<br>FHWA APPROVAL           | 04/16/2024<br>PLAN DATE | B-26-G |                 |

SECT