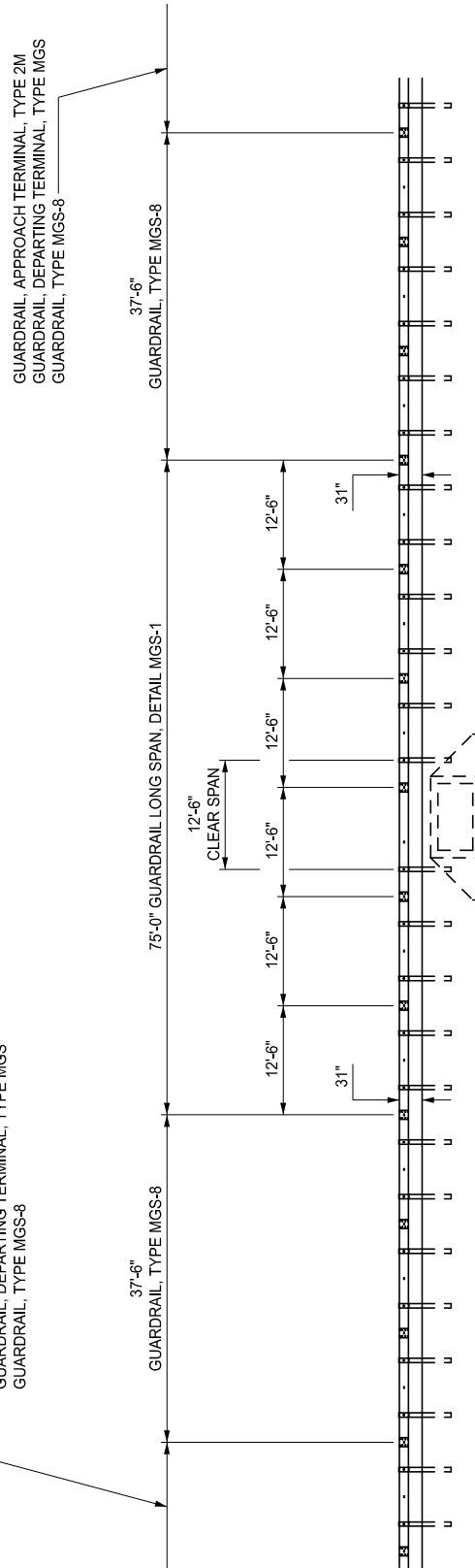
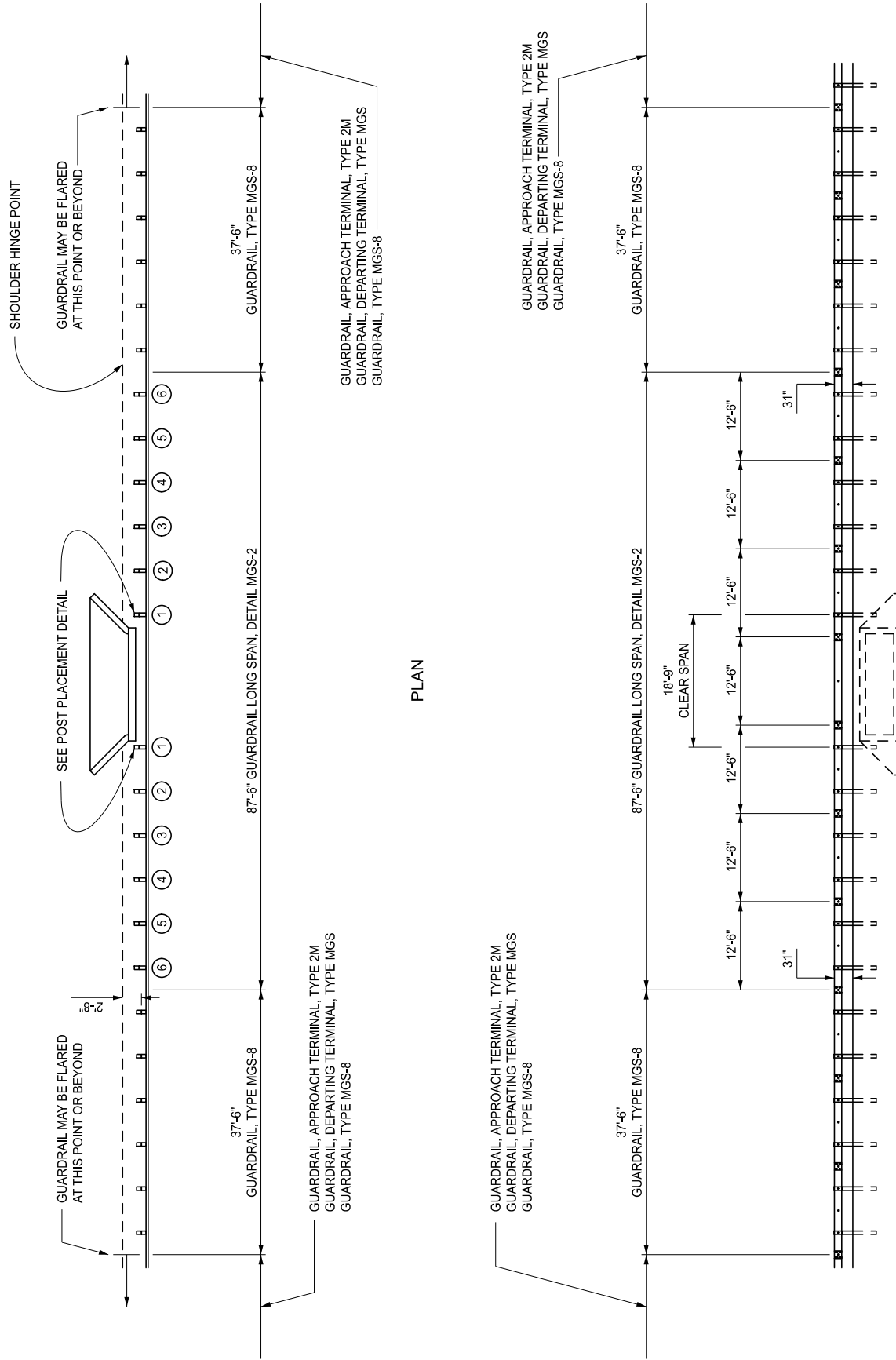


PLAN

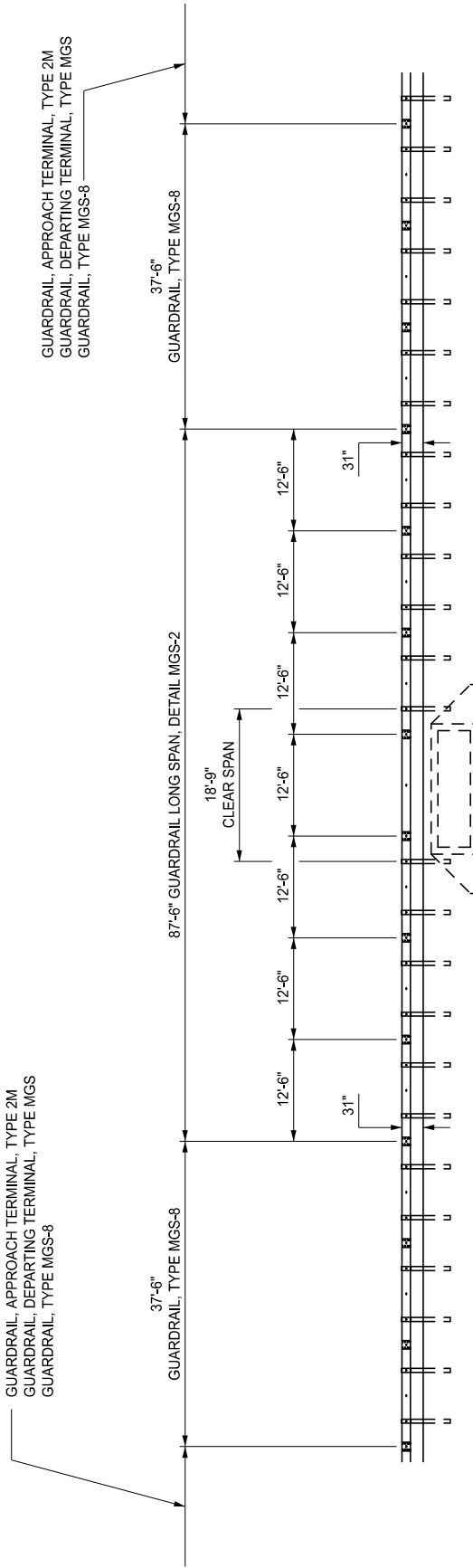


ELEVATION

GUARDRAIL LONG SPAN, DETAIL MGS-1



PLAN



ELEVATION

GUARDRAIL LONG SPAN, DETAIL MGS-2

APPROVED BY: _____
DIRECTOR, BUREAU OF FIELD SERVICES

APPROVED BY: _____
DIRECTOR, BUREAU OF DEVELOPMENT

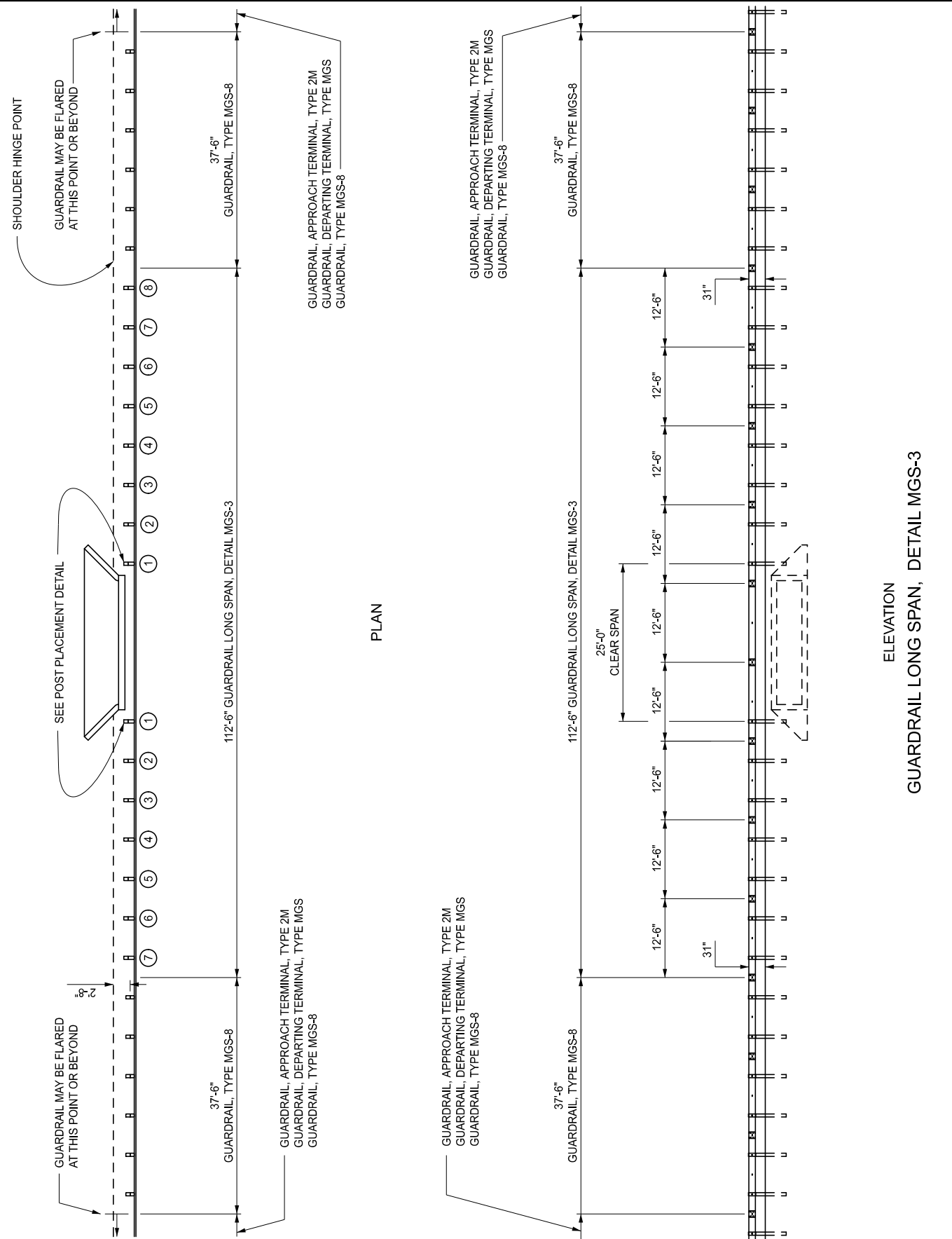


STANDARD PLAN FOR GUARDRAIL LONG SPAN INSTALLATIONS			
(SPECIAL DETAIL)	08/23/2022	R-72-D	SHEET 1 OF 6
FHWA APPROVAL	PLAN DATE		

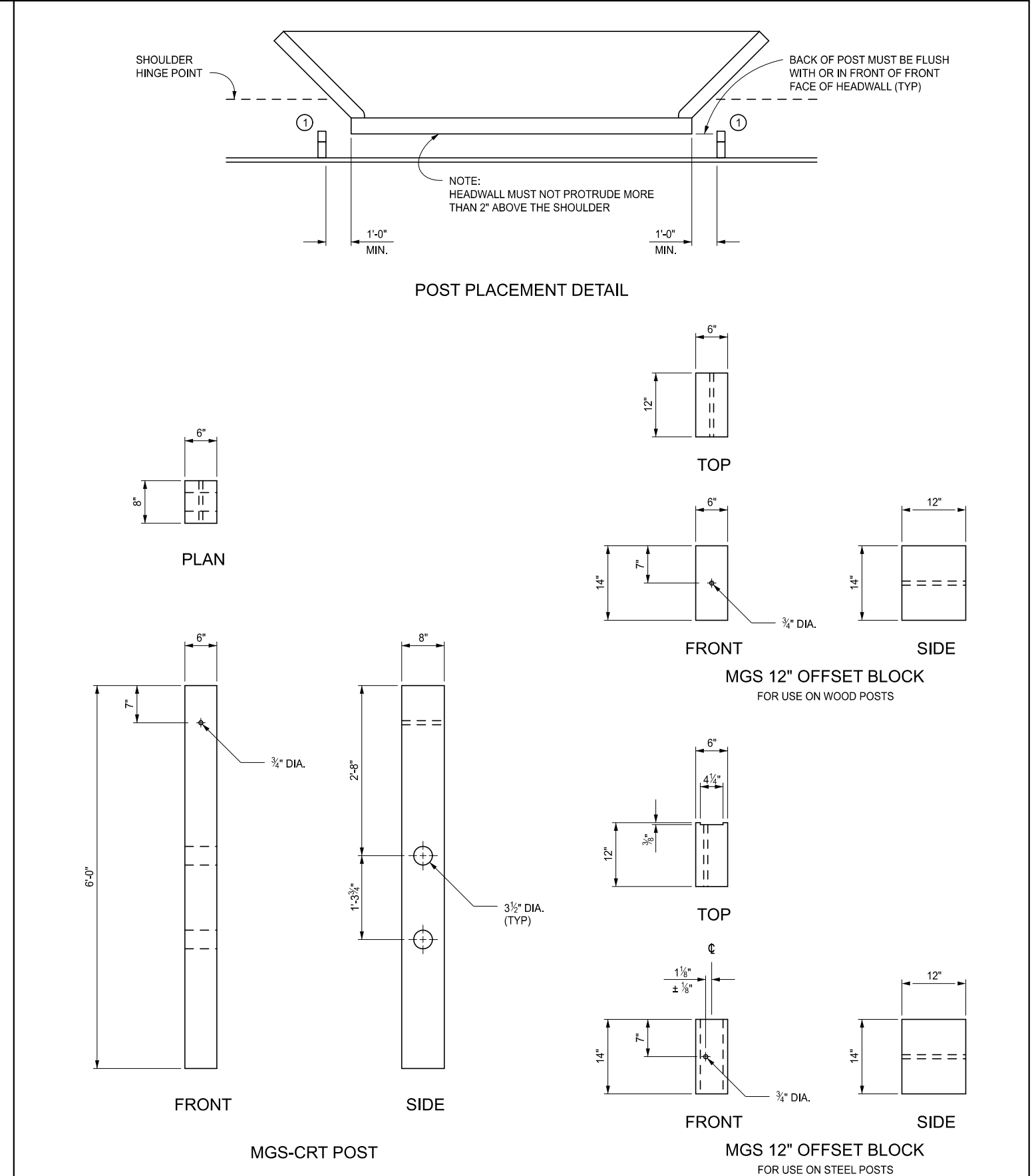


STANDARD PLAN FOR GUARDRAIL LONG SPAN INSTALLATIONS			
(SPECIAL DETAIL)	08/23/2022	R-72-D	SHEET 2 OF 6
FHWA APPROVAL	PLAN DATE		

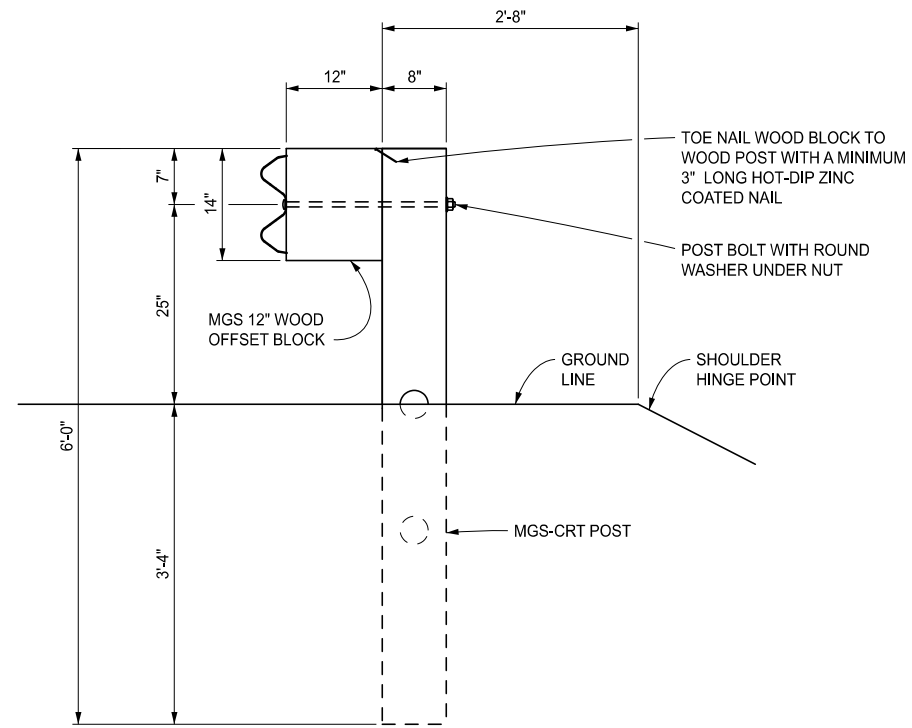
SECT



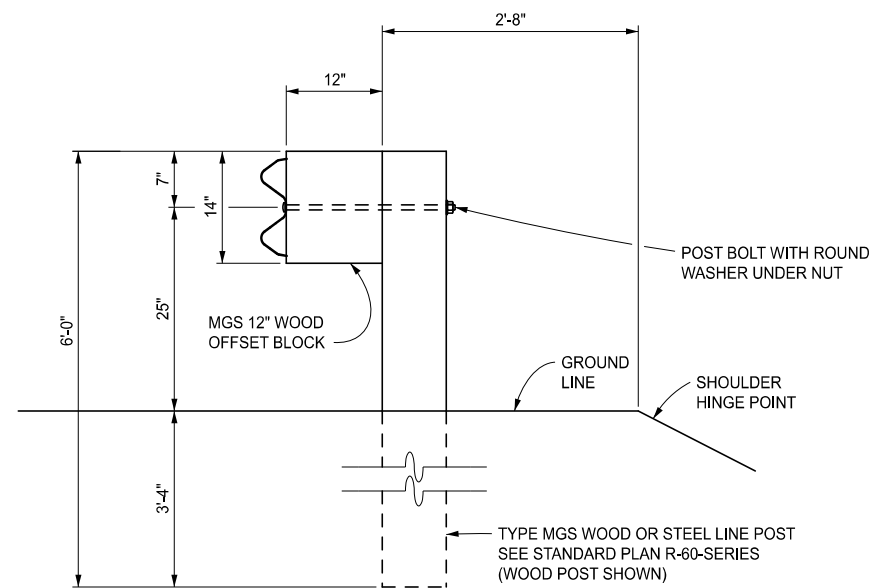
 Michigan Department of Transportation	STANDARD PLAN FOR GUARDRAIL LONG SPAN INSTALLATIONS			SHEET 3 OF 6
	(SPECIAL DETAIL) FHWA APPROVAL	08/23/2022 PLAN DATE	R-72-D	



 Michigan Department of Transportation	STANDARD PLAN FOR GUARDRAIL LONG SPAN INSTALLATIONS			SHEET 4 OF 6
	(SPECIAL DETAIL) FHWA APPROVAL	08/23/2022 PLAN DATE	R-72-D	



POST 1 THROUGH 3 DETAIL
 GUARDRAIL LONG SPAN DETAILS MGS-1, MGS-2, & MGS-3



POST 4 THROUGH 6 DETAIL
 GUARDRAIL LONG SPAN DETAILS MGS-1 & MGS-2

POST 4 THROUGH 8 DETAIL
 GUARDRAIL LONG SPAN DETAIL MGS-3

 DEPARTMENT DIRECTOR BRADLEY C. WIEFERICH, PE	STANDARD PLAN FOR GUARDRAIL LONG SPAN INSTALLATIONS			SHEET 5 OF 6
	(SPECIAL DETAIL) FHWA APPROVAL	08/23/2022 PLAN DATE	R-72-D	

 DEPARTMENT DIRECTOR BRADLEY C. WIEFERICH, PE	STANDARD PLAN FOR GUARDRAIL LONG SPAN INSTALLATIONS			SHEET 6 OF 6
	(SPECIAL DETAIL) FHWA APPROVAL	08/23/2022 PLAN DATE	R-72-D	

NOTES:

ALL POSTS, OFFSET BLOCKS, BEAM ELEMENTS, AND HARDWARE (INCLUDING BOLTS, NUTS, AND WASHERS) SHALL BE ACCORDING TO THE STANDARD SPECIFICATIONS FOR CONSTRUCTION AND STANDARD PLAN R-60-SERIES, WHERE APPLICABLE, EXCEPT WHERE NOTED ON THIS STANDARD.

THE GUARDRAIL MODIFICATIONS DETAILED ON THIS STANDARD SHOULD ONLY BE USED WHERE 6'-3" POST SPACING AND POST EMBEDMENT CANNOT BE MET.

IF USE OF THIS DESIGN WOULD INTERFERE WITH THE POST SPACING WITHIN A GUARDRAIL BRIDGE ANCHORAGE AS SPECIFIED ON STANDARD PLAN R-67-SERIES, OTHER OPTIONS SHOULD BE INVESTIGATED AND USED.