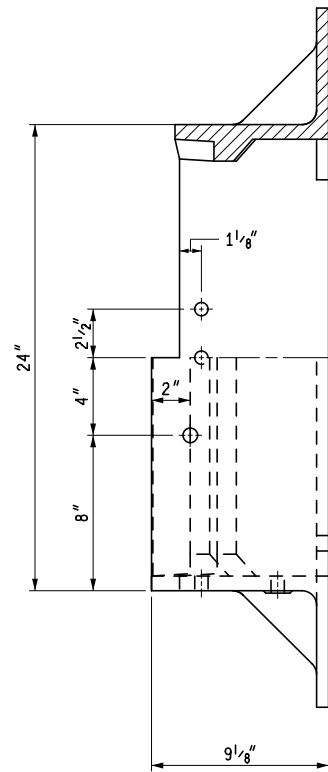
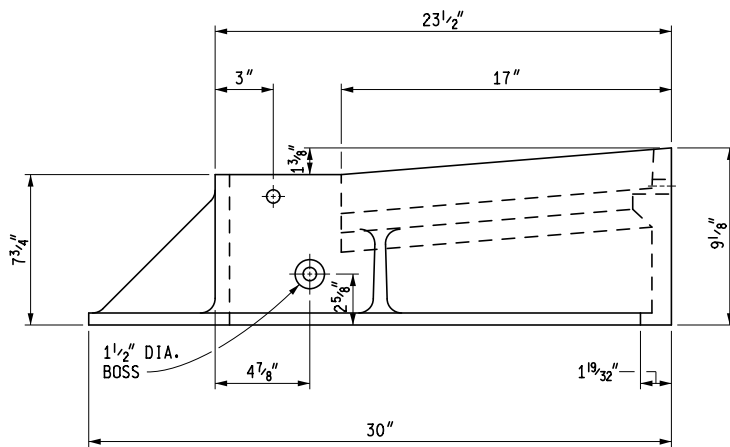


PLAN VIEW OF FRAME



FRONT ELEVATION OF FRAME SECTION A - A



SIDE ELEVATION OF FRAME



PREPARED BY
DESIGN DIVISION

DRAWN BY: B.L.T.

CHECKED BY: W.K.P.

DEPARTMENT DIRECTOR
Kirk T. Stuedle

APPROVED BY: *Randy V. Puffel*
DIRECTOR, BUREAU OF FIELD SERVICES

APPROVED BY: *Mark A. Van Pelt*
DIRECTOR, BUREAU OF HIGHWAY DEVELOPMENT

MICHIGAN DEPARTMENT OF TRANSPORTATION
BUREAU OF HIGHWAY DEVELOPMENT STANDARD PLAN FOR

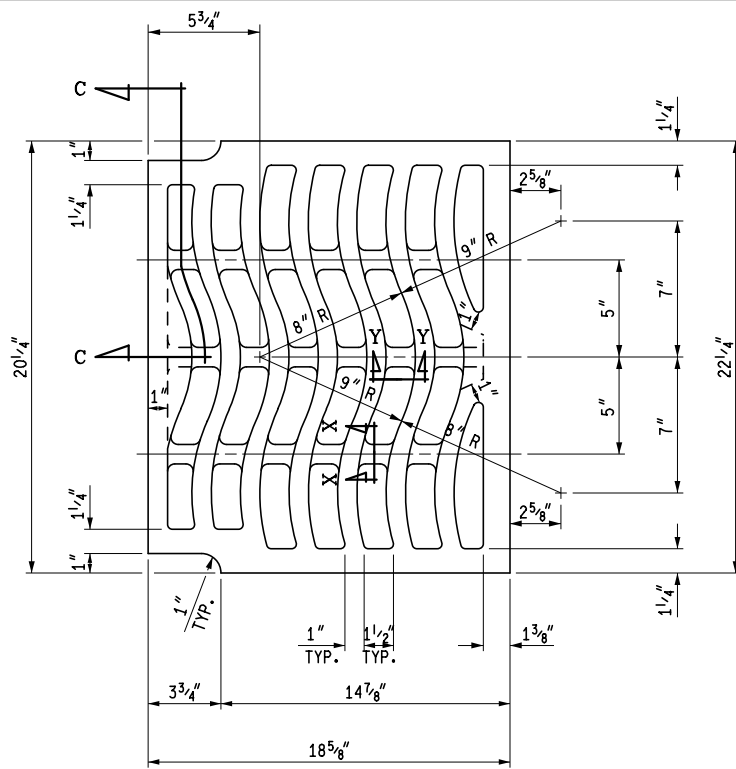
COVER C
FOR USE WITH
CONCRETE CURB & GUTTER, DETAIL D

9-30-2014
F.H.W.A. APPROVAL

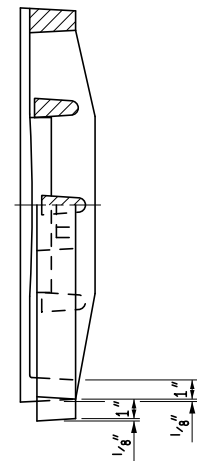
5-15-2014
PLAN DATE

R-8-D

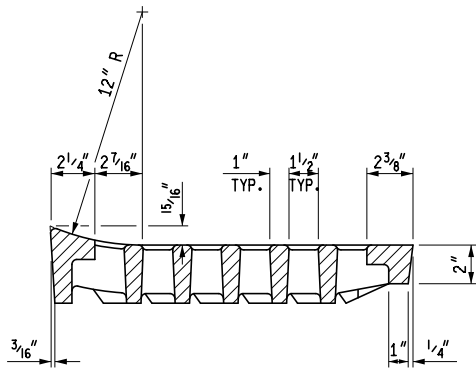
SHEET
1 OF 3



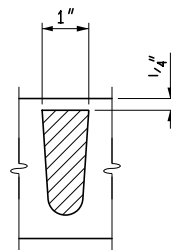
PLAN VIEW OF GRATE



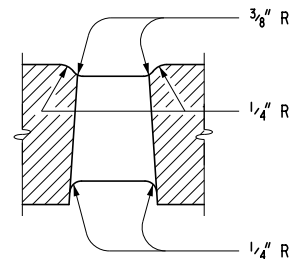
SECTION C - C
HALF FRONT ELEVATION



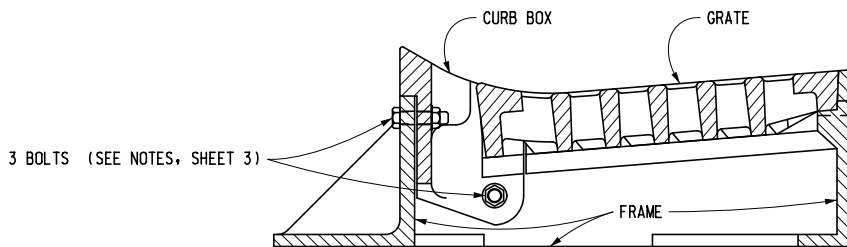
SECTION B - B



SECTION X - X



SECTION Y - Y



COVER C ASSEMBLY

MICHIGAN DEPARTMENT OF TRANSPORTATION
BUREAU OF HIGHWAY DEVELOPMENT STANDARD PLAN FOR

COVER C
FOR USE WITH
CONCRETE CURB & GUTTER, DETAIL D

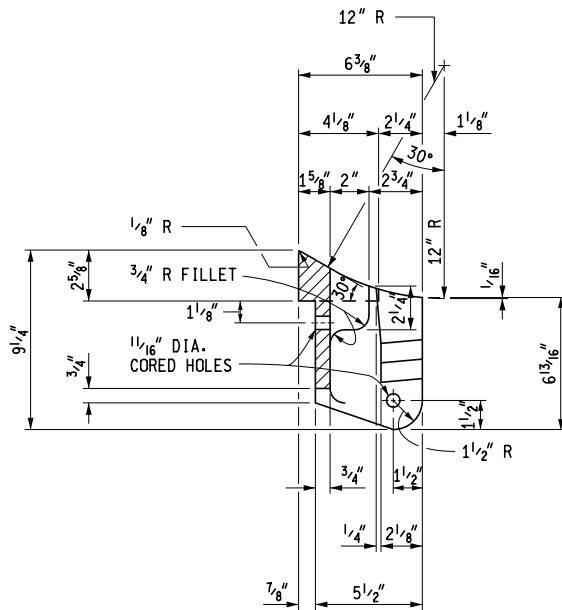
9-30-2014
F.H.W.A. APPROVAL

5-15-2014
PLAN DATE

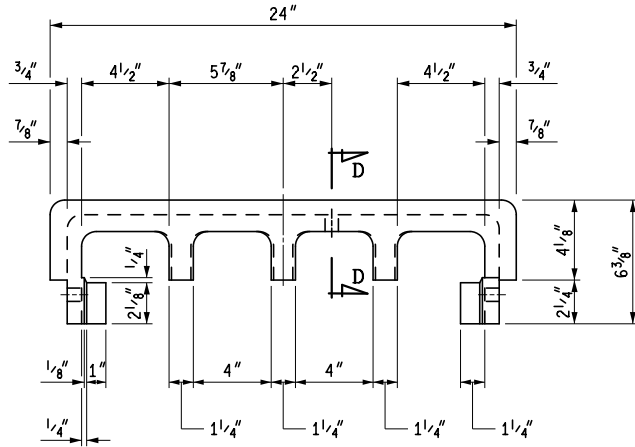
R-8-D

SHEET
2 OF 3

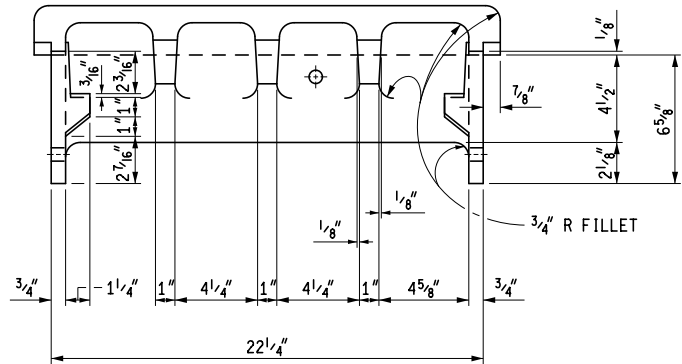
NOTE:
 BOLT CURB BOX FIRMLY TO FRAME AT FOUNDRY WITH THREE
 $\frac{5}{8}$ " DIAMETER x $2\frac{1}{2}$ " GALVANIZED MACHINE BOLTS WITH
 WASHERS AND NUT ENDS. (SEE NOTES)



SECTION D - D



PLAN VIEW OF CURB BOX



FRONT ELEVATION OF CURB BOX

NOTES:

THE CASTINGS SHALL MEET THE REQUIREMENTS OF THE CURRENT STANDARD SPECIFICATION FOR GRAY IRON CASTINGS.

ALL CASTINGS SHALL BE CLEANED BY CURRENT APPROVED BLASTING METHODS.

THE SEATING FACE OF THE GRATE AND THE SEAT FOR THE SAME ON THE FRAME AND THE CURB BOX SHALL BE GROUND SO THAT THE GRATE WILL HAVE AN EVEN BEARING ON ITS SEAT TO PREVENT ROCKING OR TILTING.

THE CASTINGS SHALL BE FREE OF POURING FAULTS, BLOW HOLES, CRACKS AND OTHER IMPERFECTIONS. THEY SHALL BE SOUND, TRUE TO FORM AND THICKNESS, CLEAN AND NEATLY FINISHED, AND SHALL BE COATED WITH COAL TAR PITCH VARNISH.

THE BEARING SURFACES BETWEEN CURB BOX AND FRAME SHALL BE GROUND AND SEATED SO AS TO PROVIDE AN EVEN BEARING THROUGHOUT. THE CURB BOX SHALL BE FIRMLY BOLTED IN PLACE ON THE FRAME BEFORE FINISHING OF THE GRATE SEATS IS DONE. GALVANIZED IRON WASHERS AND SHIMS SHALL BE PLACED BETWEEN FRAME AND ENDS OF CURB BOX SO AS BREAKING OF CURB BOX WHEN THESE BOLTS ARE TIGHTENED.

THE CURB BOX AND BOTH SECTIONS SHALL BE SHIPPED ASSEMBLED.

THIS COVER IS DESIGNED TO FIT ON ANY INLET, CATCH BASIN OR ON ANY EXISTING SIMILAR STRUCTURE WHEN SO DESIGNATED ON THE PLANS.

MICHIGAN DEPARTMENT OF TRANSPORTATION
 BUREAU OF HIGHWAY DEVELOPMENT STANDARD PLAN FOR

COVER C
 FOR USE WITH
 CONCRETE CURB & GUTTER, DETAIL D

9-30-2014
 F.H.W.A. APPROVAL

5-15-2014
 PLAN DATE

R-8-D

SHEET
 3 OF 3