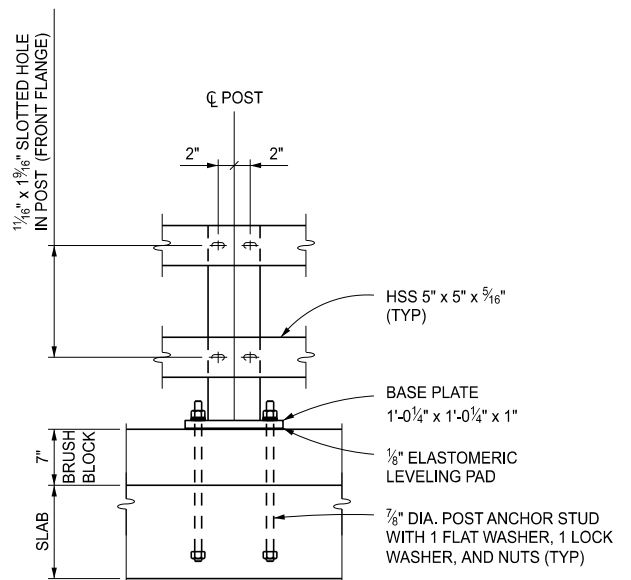
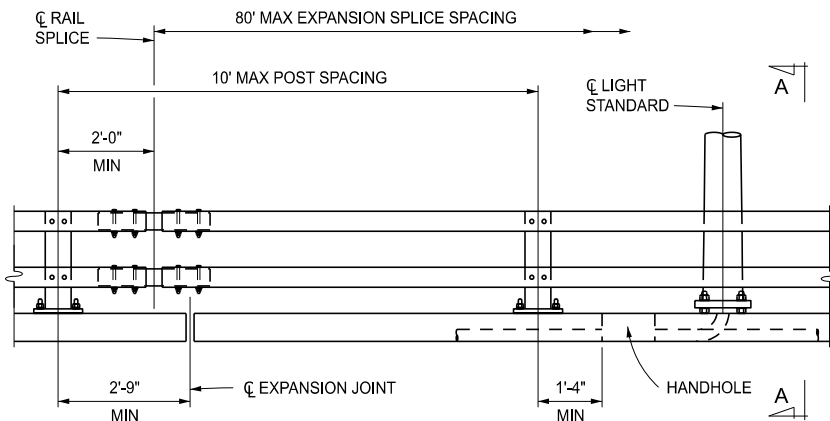


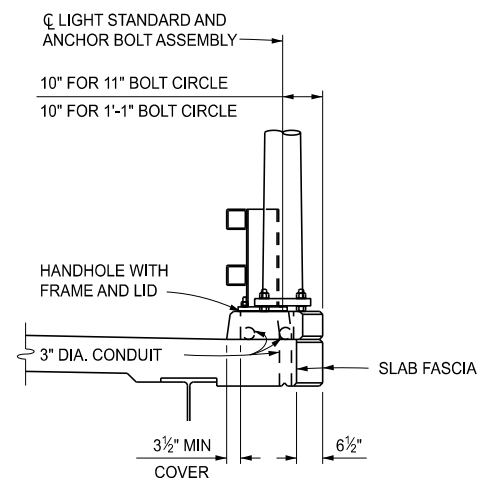
SECTION THROUGH
BRUSH BLOCK AND RAILING



POST ELEVATION



RAILING ELEVATION



SECTION A-A

APPROVED BY: _____
DIRECTOR, BUREAU OF BRIDGES AND STRUCTURES

APPROVED BY: _____
DIRECTOR, BUREAU OF FIELD SERVICES

APPROVED BY: _____
DIRECTOR, BUREAU OF DEVELOPMENT



DEPARTMENT DIRECTOR
BRADLEY C. WIEFERICH, PE

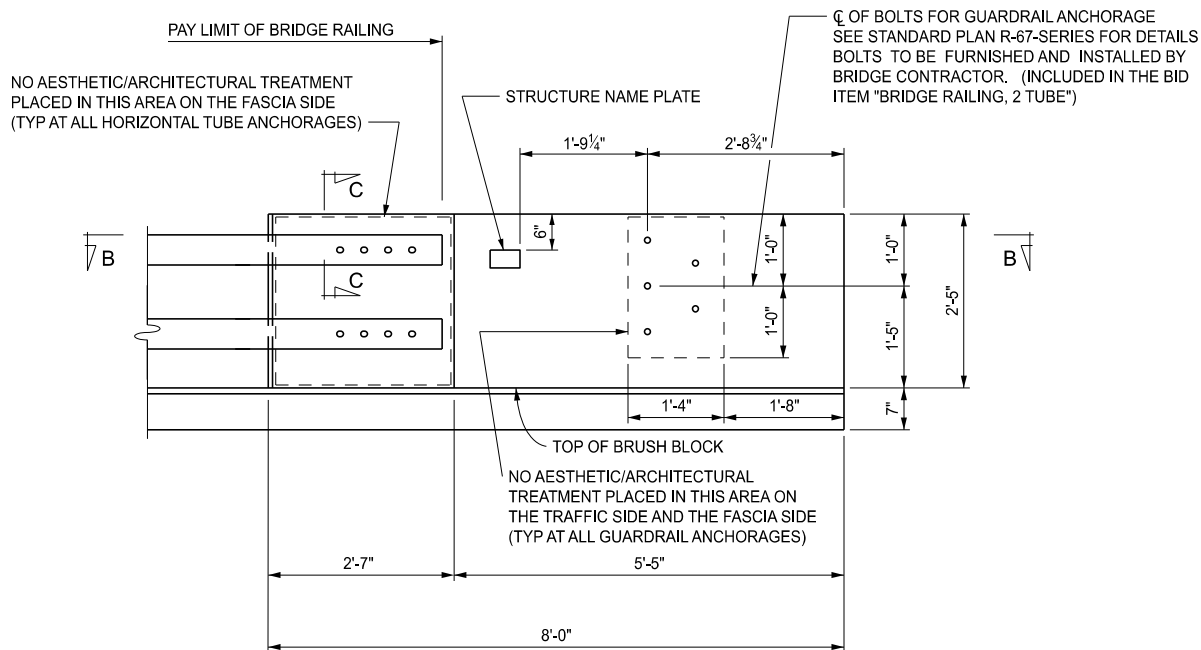
STANDARD PLAN FOR
BRIDGE RAILING, 2 TUBE

(SPECIAL DETAIL)
FHWA APPROVAL

09/10/2024
PLAN DATE

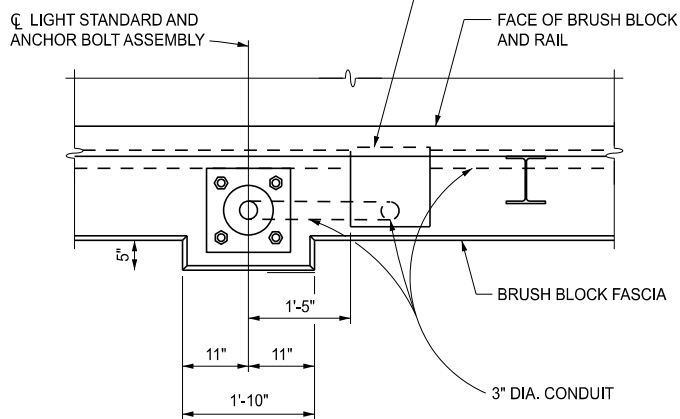
B-21-K

SHEET
1 OF 4

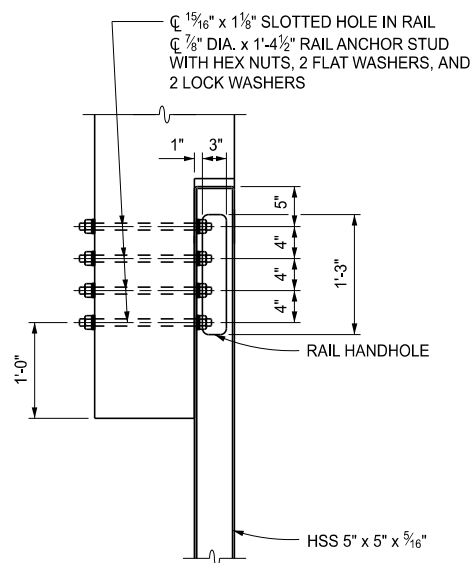


END WALL ELEVATION

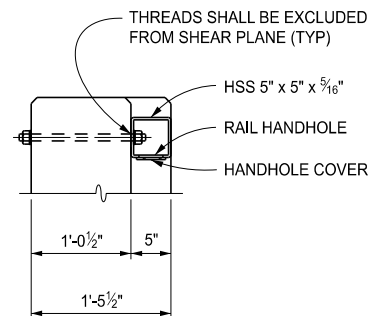
HANDHOLE WITH FRAME ANCHORED AND LID BOLTED TO FRAME. FRAME AND LID SHALL BE R-6687-A1 NEENAH FOUNDRY COMPANY, 8111 EAST JORDAN IRON WORKS, OR APPROVED EQUAL.



PLAN VIEW AT LIGHT STANDARD



SECTION B-B



SECTION C-C



DEPARTMENT DIRECTOR
BRADLEY C. WIEFERICH, PE

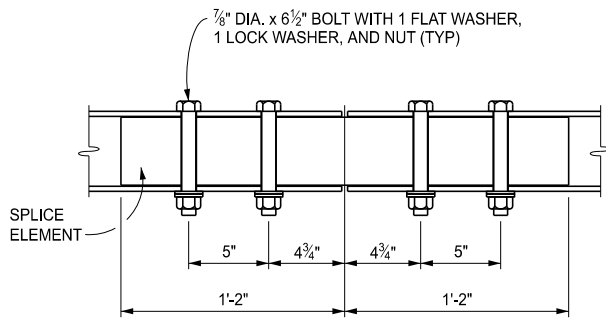
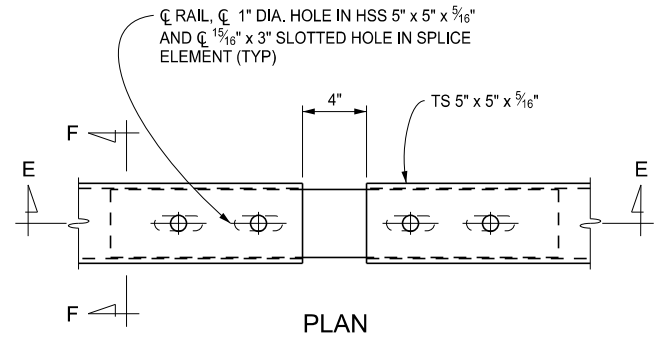
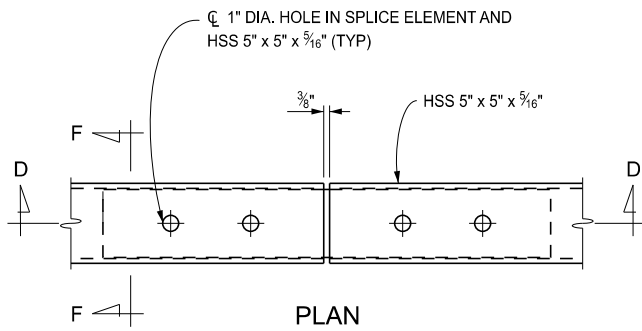
STANDARD PLAN FOR
BRIDGE RAILING, 2 TUBE

(SPECIAL DETAIL)
FHWA APPROVAL

09/10/2024
PLAN DATE

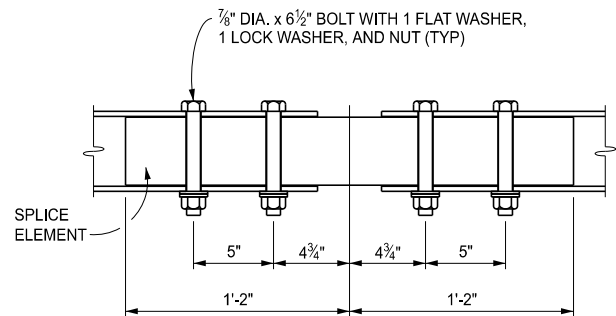
B-21-K

SHEET
2 OF 4



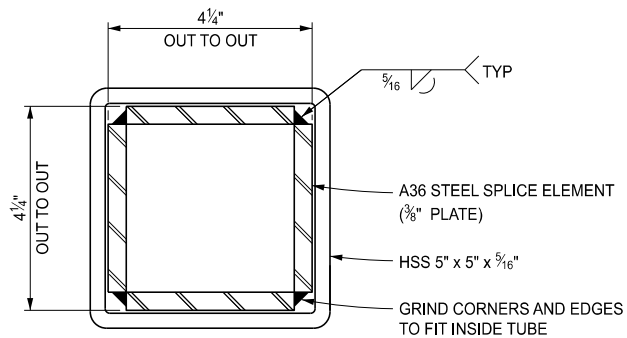
SECTION D-D

FIXED SPLICE DETAILS



SECTION E-E

EXPANSION SPLICE DETAILS



SECTION F-F



DEPARTMENT DIRECTOR
BRADLEY C. WIEFERICH, PE

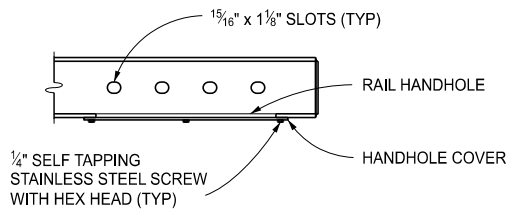
STANDARD PLAN FOR
BRIDGE RAILING, 2 TUBE

(SPECIAL DETAIL)
FHWA APPROVAL

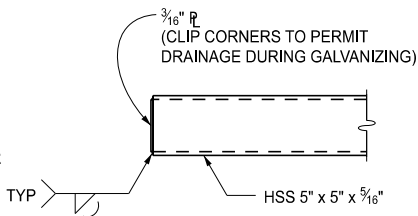
09/10/2024
PLAN DATE

B-21-K

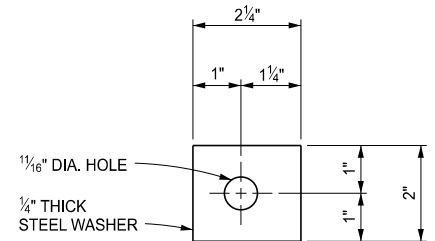
SHEET
3 OF 4



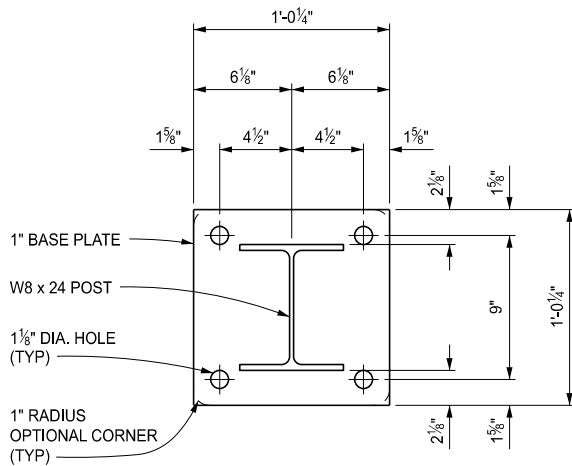
END OF RAIL SECTION



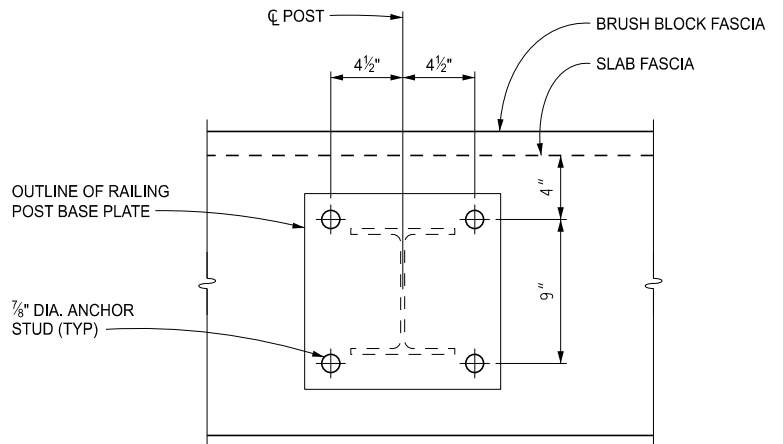
END OF RAIL



DETAIL A

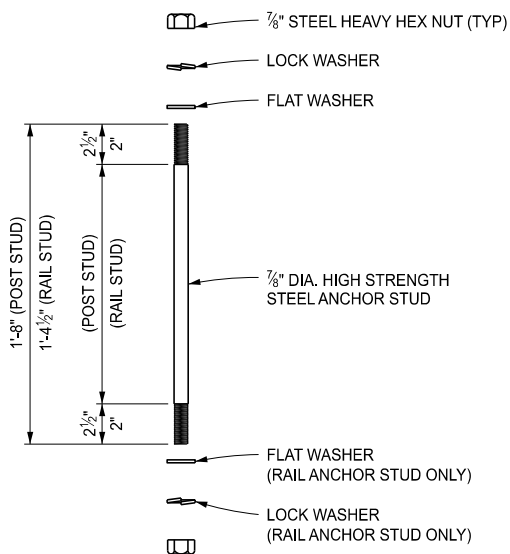


BASE PLATE DETAIL



ANCHOR STUD LAYOUT

NOTE: SURFACE UNDER POST IS TO BE FINISHED LEVEL



ANCHOR STUD DETAIL

NOTES:

DETAILS SHOWN ARE IN ACCORDANCE WITH CURRENT AASHTO SPECIFICATIONS.

ALL WORK AND MATERIAL SHALL BE IN ACCORDANCE WITH THE STANDARD SPECIFICATIONS FOR CONSTRUCTION.

THIS RAILING SHALL BE USED ONLY WITH THE BRUSH BLOCK SHOWN ON THIS SHEET.

FOR LIGHT STANDARD ANCHOR BOLT ASSEMBLY DETAILS, SEE STANDARD PLAN B-103-SERIES.

FENCING MAY BE ATTACHED TO THE NON-TRAFFIC SIDE OF THE 2 TUBE RAILING TO PROTECT PEDESTRIANS



DEPARTMENT DIRECTOR
BRADLEY C. WIEFERICH, PE

STANDARD PLAN FOR
BRIDGE RAILING, 2 TUBE

(SPECIAL DETAIL)
FHWA APPROVAL

09/10/2024
PLAN DATE

B-21-K

SHEET
4 OF 4