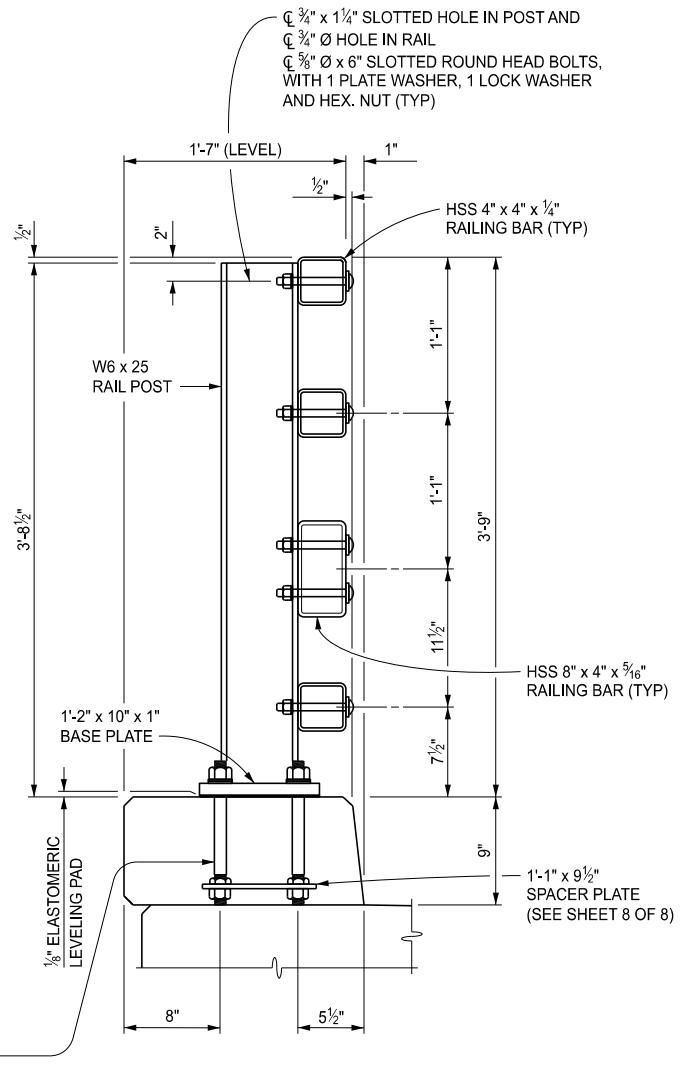
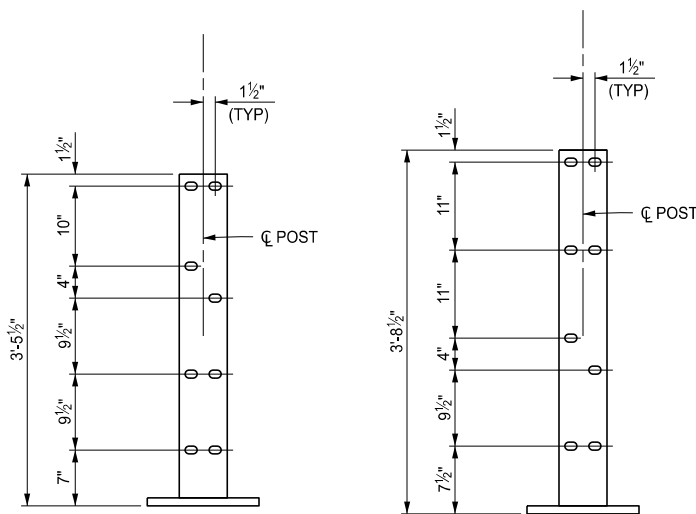


PEDESTRIAN BRIDGE RAILING



BICYCLE BRIDGE RAILING



POST DETAILS

NOTES:

DETAILS SHOWN ARE ACCORDING TO CURRENT AASHTO SPECIFICATIONS.

ALL WORK AND MATERIALS SHALL BE ACCORDING TO THE STANDARD SPECIFICATIONS FOR CONSTRUCTION.

THE BICYCLE BRIDGE RAILING SHALL BE USED ONLY WITH THE BRUSH BLOCK SHOWN ON THIS SHEET.

FOR LIGHT STANDARD ANCHOR BOLT ASSEMBLY DETAILS, SEE STANDARD PLAN B-103-SERIES.

USE THE HSS 2\"/>

ALL LABOR, MATERIALS AND EQUIPMENT REQUIRED TO INSTALL THE HSS 2\"/>

APPROVED BY: _____
DIRECTOR, BUREAU OF BRIDGES AND STRUCTURES

APPROVED BY: _____
DIRECTOR, BUREAU OF FIELD SERVICES

APPROVED BY: _____
DIRECTOR, BUREAU OF DEVELOPMENT



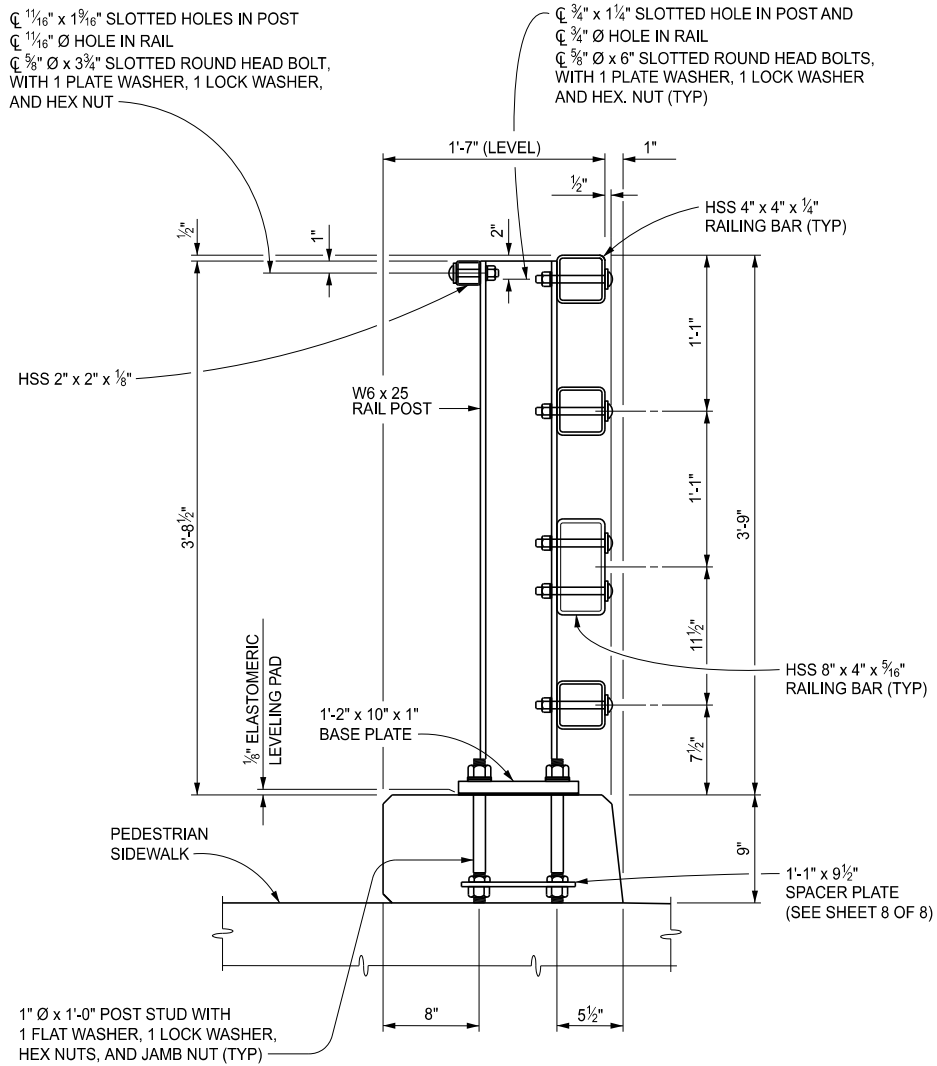
DEPARTMENT DIRECTOR
BRADLEY C. WIEFERICH, PE

STANDARD PLAN FOR
BRIDGE RAILING, 4 TUBE

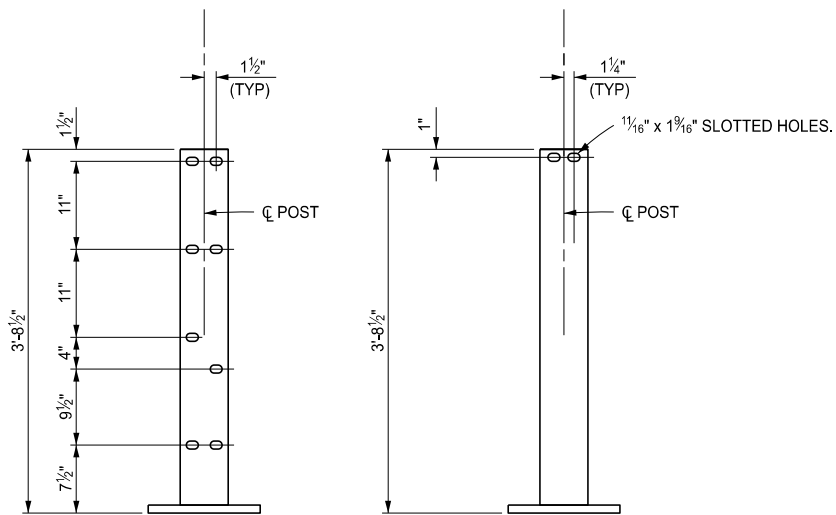
(SPECIAL DETAIL) 04/16/2024
FHWA APPROVAL PLAN DATE

B-26-G

SHEET
1 OF 8



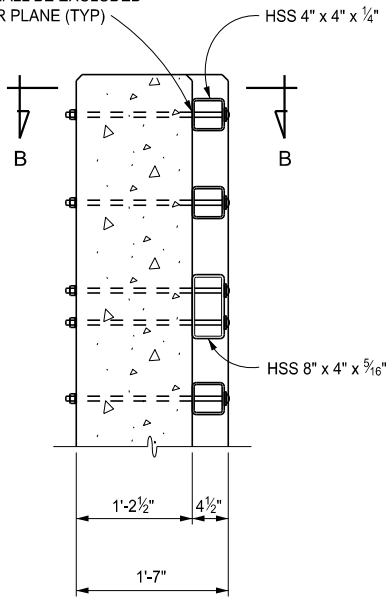
**BICYCLE BRIDGE RAILING
WITH SIDEWALK**



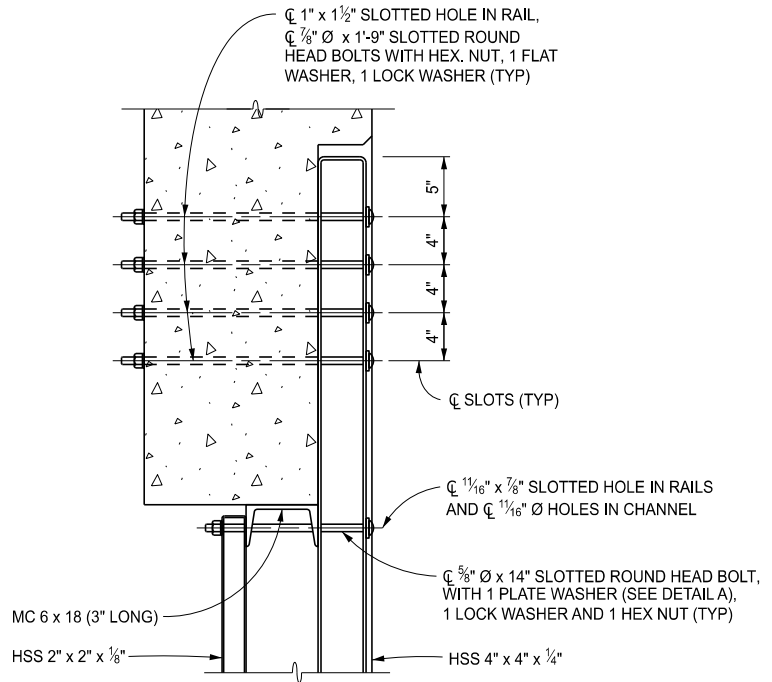
POST DETAILS

<p> DEPARTMENT DIRECTOR BRADLEY C. WIEFERICH, PE </p>	STANDARD PLAN FOR BRIDGE RAILING, 4 TUBE		B-26-G	SHEET 2 OF 8
	(SPECIAL DETAIL) FHWA APPROVAL	04/16/2024 PLAN DATE		

THREADS SHALL BE EXCLUDED FROM SHEAR PLANE (TYP)

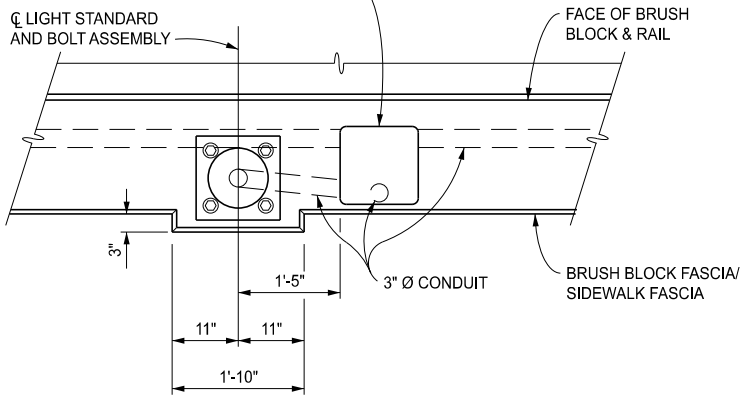


SECTION A-A
BICYCLE RAILING SHOWN
PEDESTRIAN RAILING SIMILAR

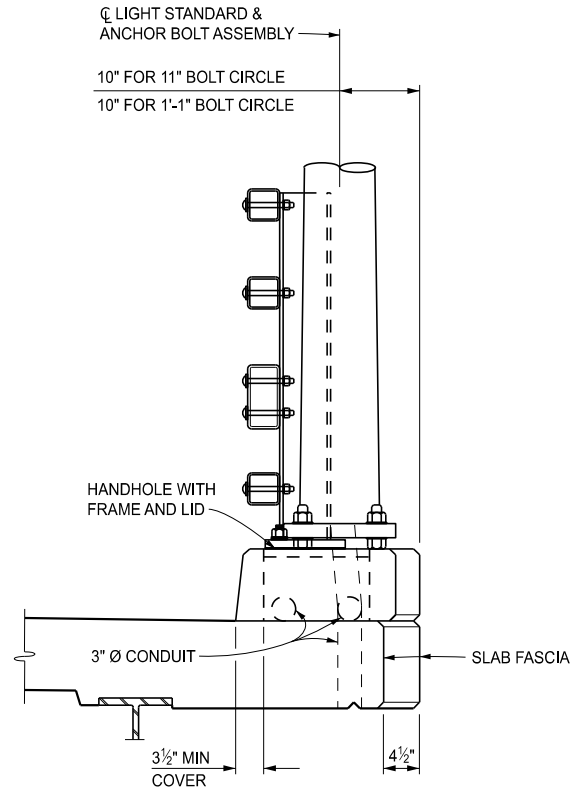


SECTION B-B

HANDHOLE WITH FRAME ANCHORED AND LID BOLTED TO FRAME. FRAME AND LID SHALL BE R-6687-A1 NEENAH FOUNDRY COMPANY, 8111 EAST JORDAN IRON WORKS, OR APPROVED EQUAL.



PLAN VIEW AT LIGHT STANDARD
BICYCLE RAILING



SECTION C-C
BICYCLE RAILING



DEPARTMENT DIRECTOR
BRADLEY C. WIEFERICH, PE

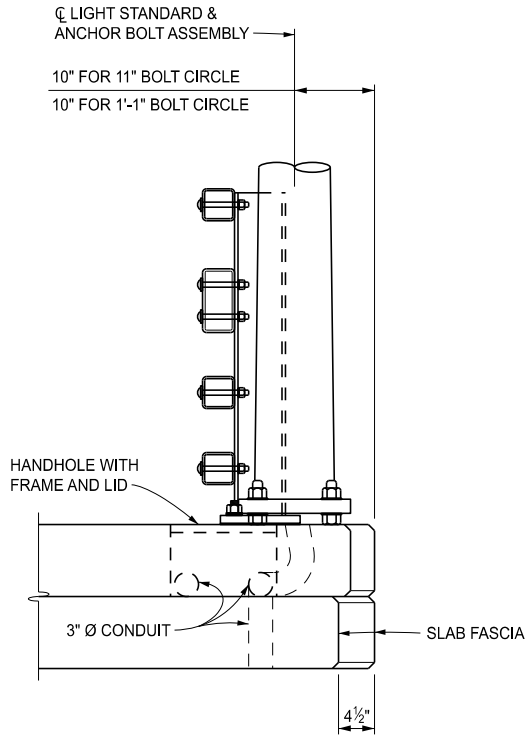
STANDARD PLAN FOR
BRIDGE RAILING, 4 TUBE

(SPECIAL DETAIL)
FHWA APPROVAL

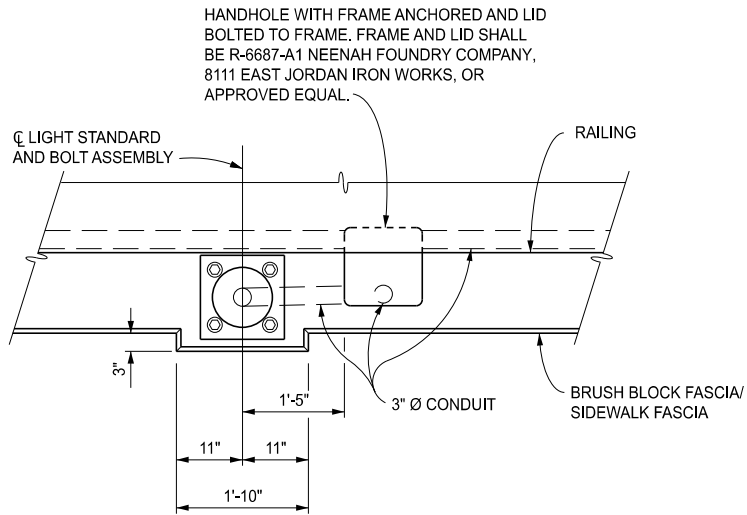
04/16/2024
PLAN DATE

B-26-G

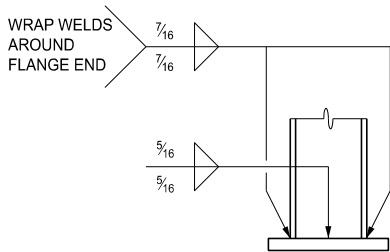
SHEET
4 OF 8



SECTION D-D
PEDESTRIAN RAILING



PLAN VIEW AT LIGHT STANDARD
PEDESTRIAN RAILING



BASE WELD DETAIL

MDOT
Michigan Department of Transportation

DEPARTMENT DIRECTOR
BRADLEY C. WIEFERICH, PE

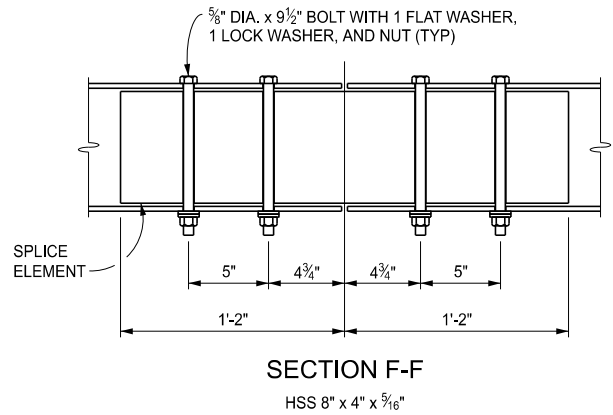
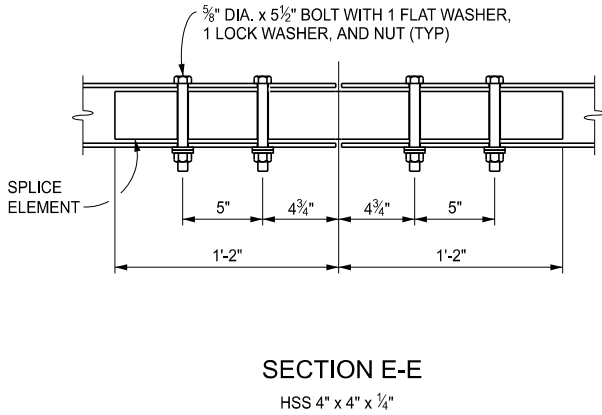
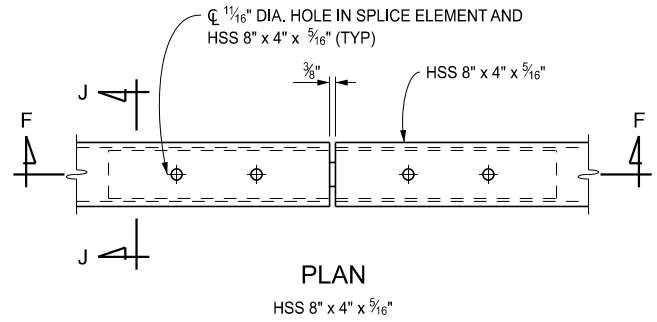
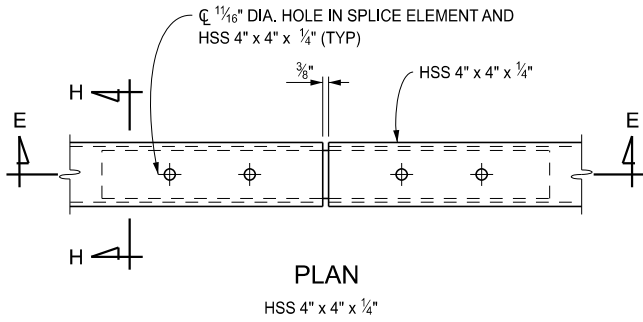
STANDARD PLAN FOR
BRIDGE RAILING, 4 TUBE

(SPECIAL DETAIL)
FHWA APPROVAL

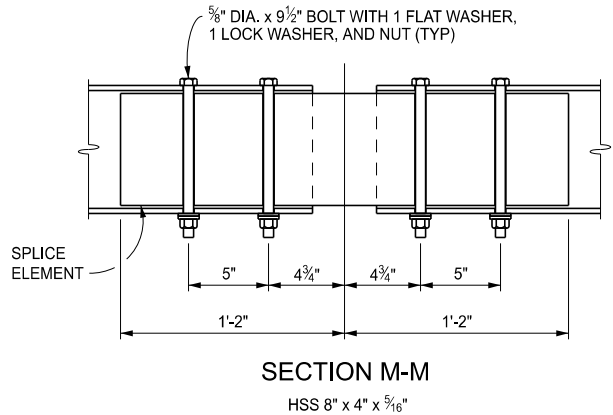
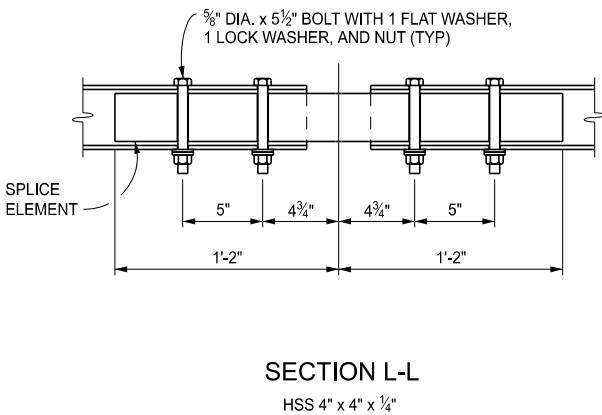
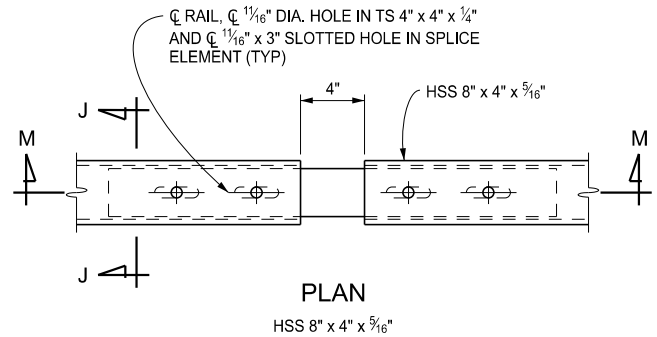
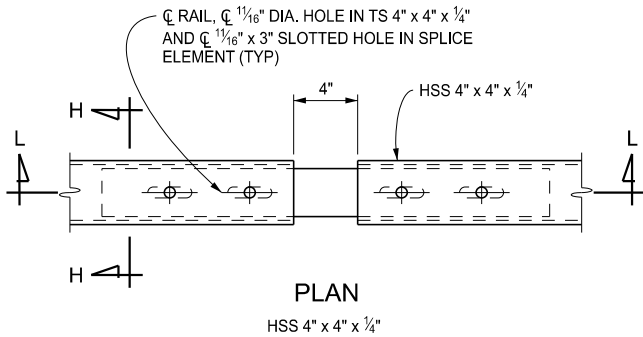
04/16/2024
PLAN DATE

B-26-G

SHEET
5 OF 8

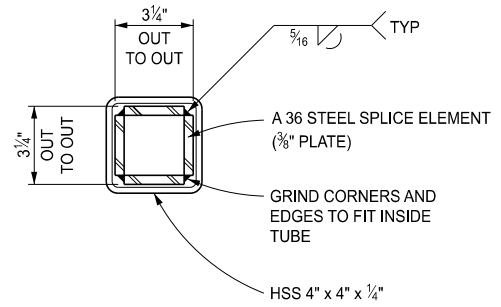
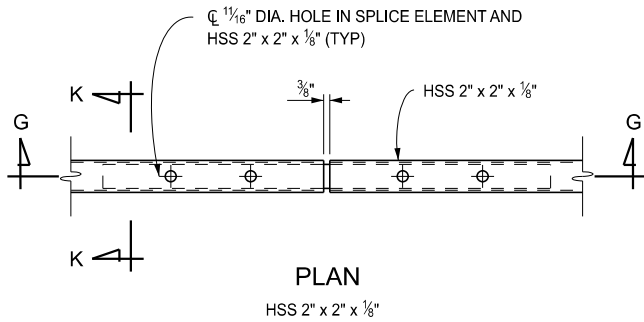


FIXED SPLICE DETAILS

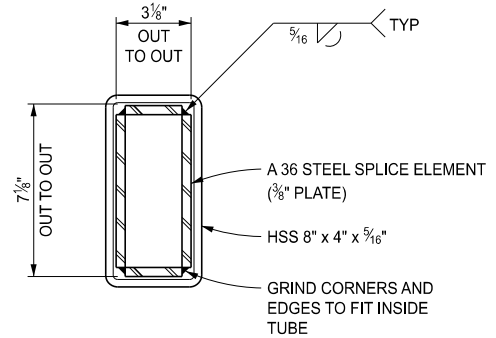
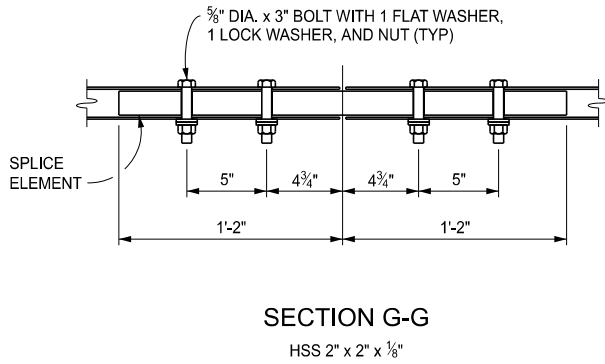


EXPANSION SPLICE DETAILS

<p> DEPARTMENT DIRECTOR BRADLEY C. WIEFERICH, PE </p>	STANDARD PLAN FOR BRIDGE RAILING, 4 TUBE		B-26-G	SHEET 6 OF 8
	(SPECIAL DETAIL) FHWA APPROVAL	04/16/2024 PLAN DATE		

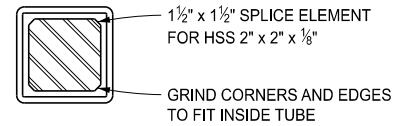
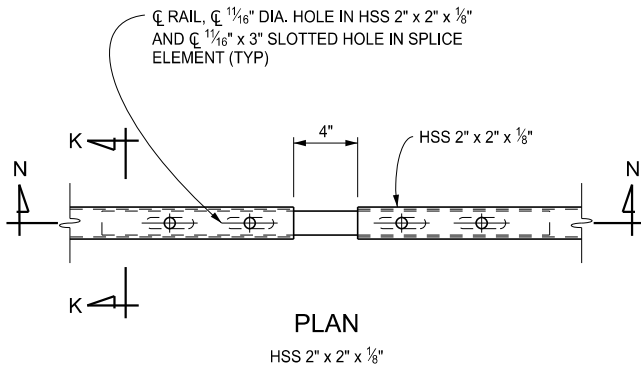


SECTION H-H

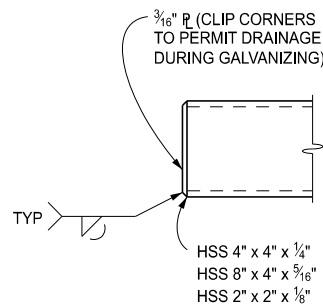
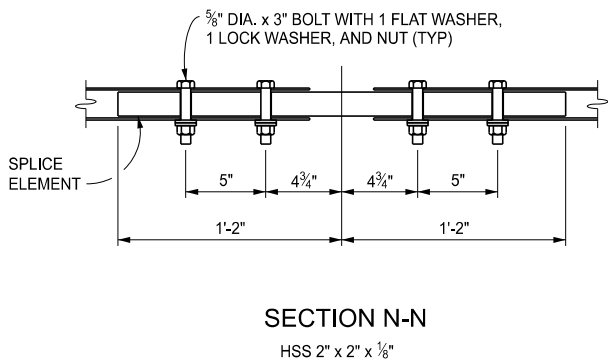


SECTION J-J

FIXED SPLICE DETAILS

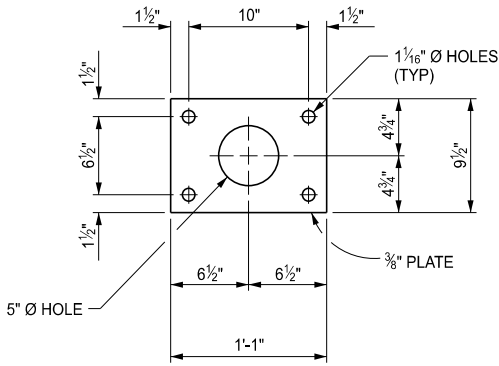


SECTION K-K

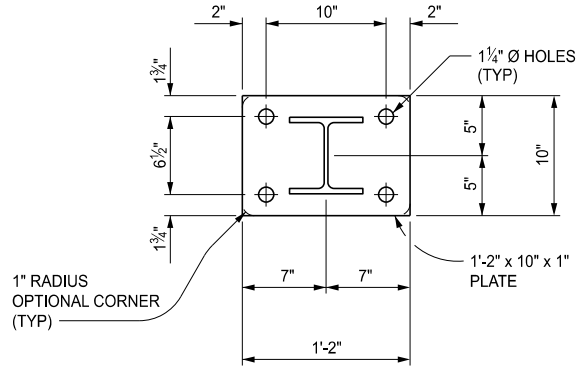


END OF RAIL

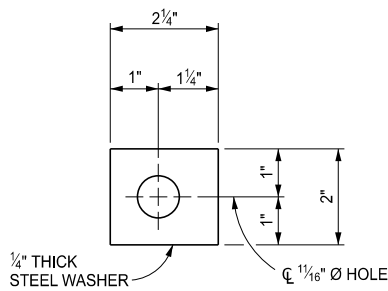
EXPANSION SPLICE DETAILS



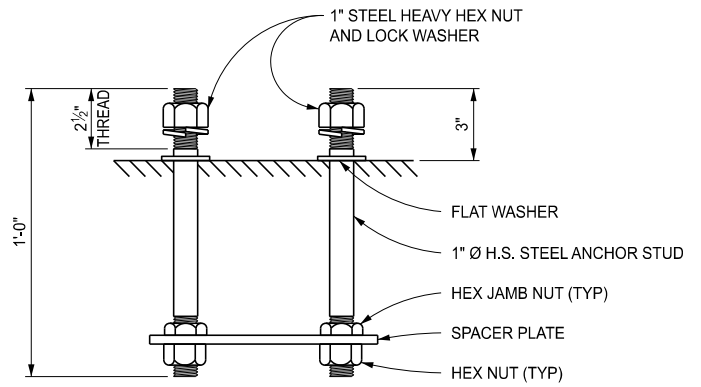
SPACER PLATE PLAN



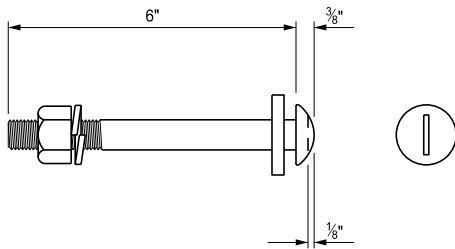
POST & BASE PLATE PLAN



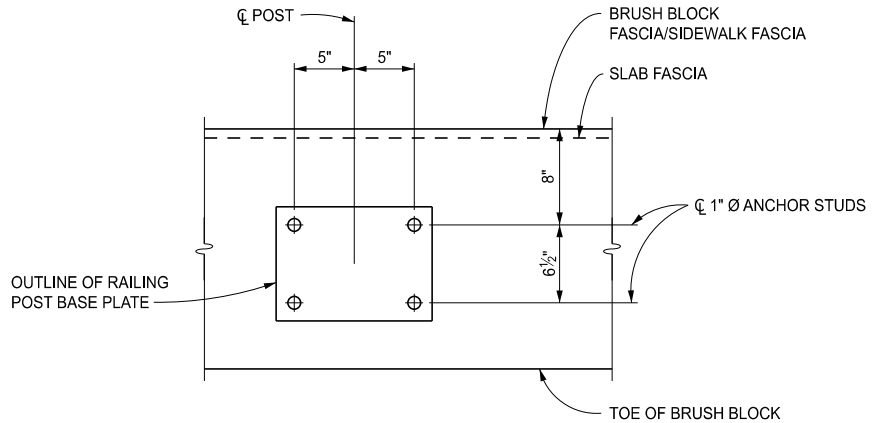
DETAIL A



POST STUD ANCHORAGE



5/8" Ø ROUND HEAD BOLT
WITH PLATE WASHER (SEE DETAIL A),
LOCK WASHER AND HEX NUT



ANCHOR STUD LAYOUT

NOTE: SURFACE UNDER POST IS
TO BE FINISHED LEVEL



DEPARTMENT DIRECTOR
BRADLEY C. WIEFERICH, PE

STANDARD PLAN FOR
BRIDGE RAILING, 4 TUBE

(SPECIAL DETAIL)
FHWA APPROVAL

04/16/2024
PLAN DATE

B-26-G

SHEET
8 OF 8