

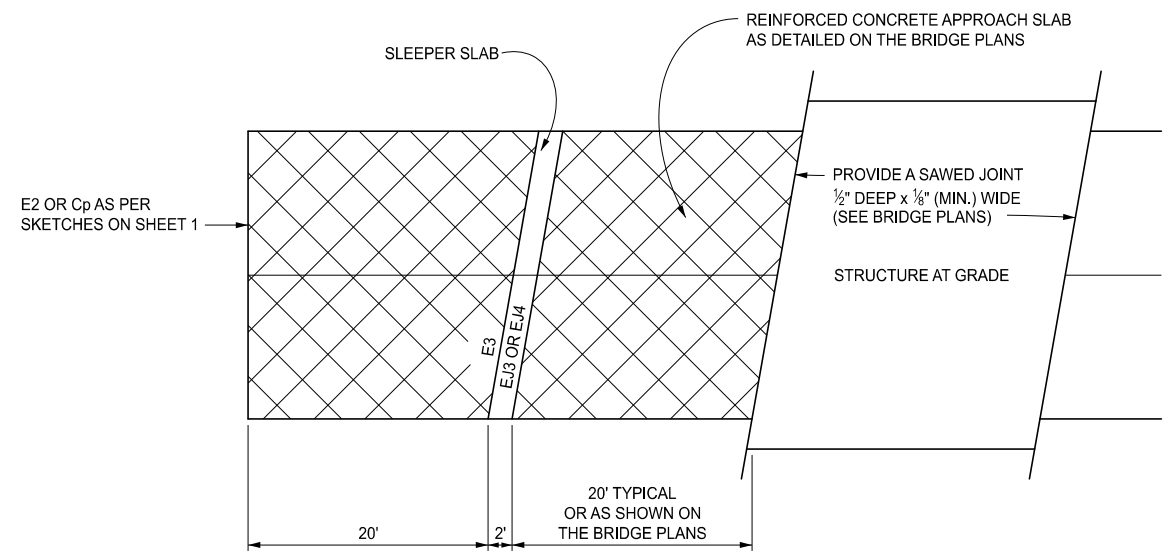
PLAN VIEW SHOWING TRANSVERSE JOINT LOCATIONS

JOINT LEGEND
ACCORDING TO STANDARD PLAN R-39-SERIES

- (E2) 1" TRANSVERSE EXPANSION JOINT WITH LOAD TRANSFER ASSEMBLY
- (E3) 1" TRANSVERSE EXPANSION JOINT WITHOUT LOAD TRANSFER ASSEMBLY
- (Cp) TRANSVERSE CONTRACTION JOINT
- REINFORCED CONCRETE PAVEMENT ADJACENT TO BRIDGE REFERENCE LINE OR SLEEPER SLAB

NOTE:
SEE SHEET 2 FOR DETAIL OF JOINT SPACING WITH INTEGRAL / SEMI-INTEGRAL ABUTMENTS AND SLEEPER SLAB.

JOINTED PLAIN CONCRETE PAVEMENT	
PAVEMENT THICKNESS	JOINT SPACING
6 1/2" TO 8 3/4"	12'
9" TO 11 3/4"	14'
12" OR MORE	16'



JOINT SPACING WITH INTEGRAL / SEMI-INTEGRAL ABUTMENTS AND SLEEPER SLABS

NOTES:

UNLESS OTHERWISE SPECIFIED ON THE PLANS OR DIRECTED BY THE ENGINEER, TRANSVERSE JOINTS SHALL BE PLACED AS SPECIFIED ON THIS STANDARD PLAN AND ON STANDARD PLAN R-42-SERIES.

MAXIMUM JOINT SPACING SHALL NOT EXCEED THE DISTANCE SPECIFIED. WHEN A JOINT SPACING ADJUSTMENT IS REQUIRED, IT SHALL BE MADE BETWEEN CONTRACTION JOINTS WITH THE ADJUSTED SPACE BEING NOT LESS THAN 6'-6".

EXPANSION JOINTS SHALL ONLY BE PLACED AT STRUCTURES, INTERSECTIONS AND SPECIFIED LOCATIONS.

JOINTS ABUTTING RAILROAD TRACKS SHALL BE AS SPECIFIED ON STANDARD PLAN R-121-SERIES.

APPROVED BY: _____
DIRECTOR, BUREAU OF FIELD SERVICES



DEPARTMENT DIRECTOR
BRADLEY C. WIEFERICH, PE

STANDARD PLAN FOR
LOCATION OF TRANSVERSE JOINTS
IN PLAIN CONCRETE PAVEMENT

(SPECIAL DETAIL)
FHWA APPROVAL

01/04/2022
PLAN DATE

R-43-J

SHEET
1 OF 2



DEPARTMENT DIRECTOR
BRADLEY C. WIEFERICH, PE

STANDARD PLAN FOR
LOCATION OF TRANSVERSE JOINTS
IN PLAIN CONCRETE PAVEMENT

(SPECIAL DETAIL)
FHWA APPROVAL

01/04/2022
PLAN DATE

R-43-J

SHEET
2 OF 2

SECT