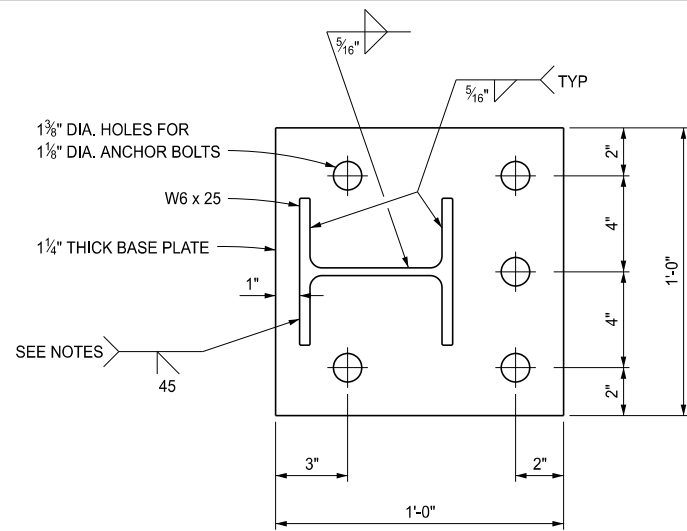
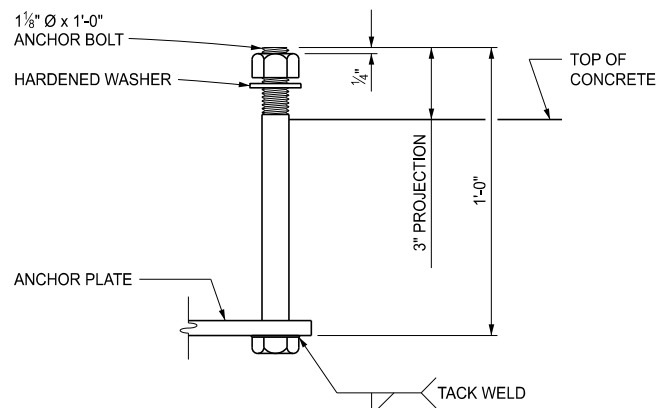


ANCHOR PLATE

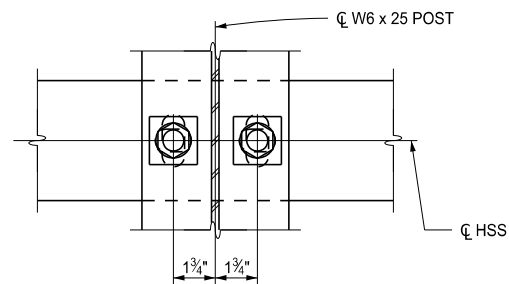


BASE PLATE

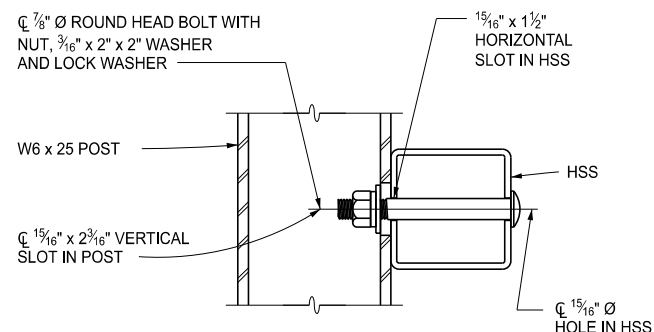
NOTE:
POST FLANGE WELD DOES NOT REQUIRE MAGNETIC PARTICLE TESTING. WELD SHALL BE BACK-GOUGED ON BACK SIDE EXCEPT AT WEB. WELD IS THE SAME ON BOTH FLANGES.



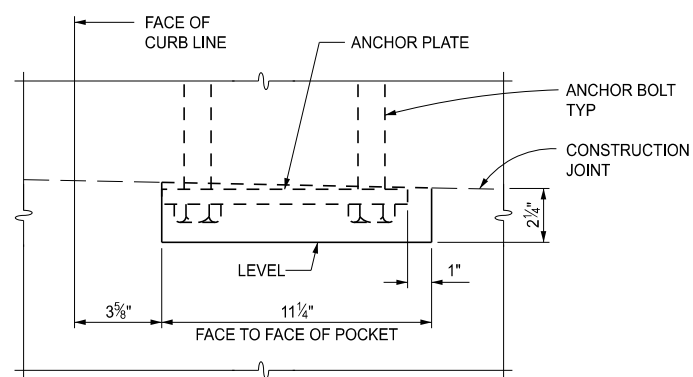
ANCHOR BOLT



SECTION THROUGH POST WEB

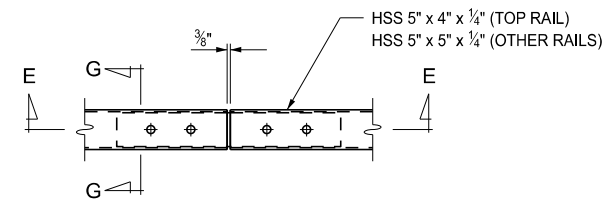


SECTION THROUGH RAIL
RAIL TO POST CONNECTIONS

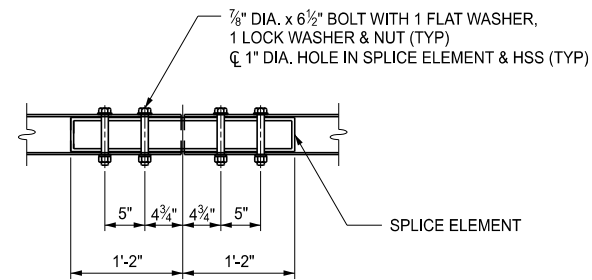


DETAIL A

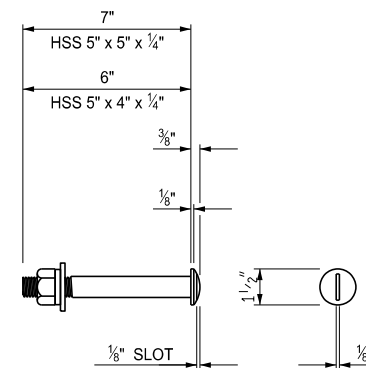
NOTE:
PROVIDE 15 3/4" LONG x 11 1/4" WIDE x 2 1/4" DEEP POCKET IN THE DECK SLAB AT THE LOCATION OF EACH RAIL POST. USE AT BRUSH BLOCK SECTION AND AT SIDEWALK FASCIA LESS THAN 10".



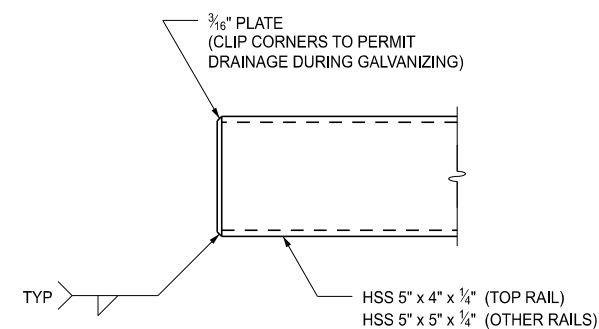
FIXED SPLICE PLAN



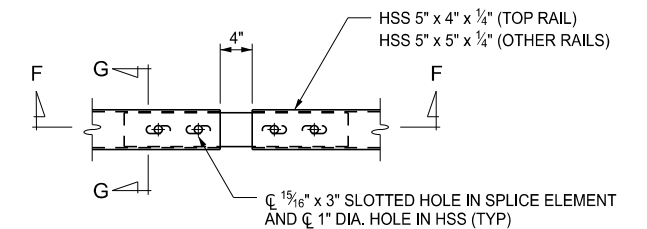
SECTION E - E



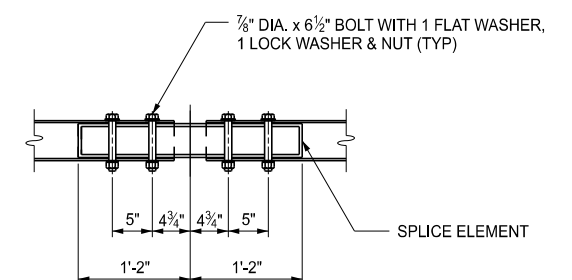
7/8" Ø ROUND HEAD BOLT



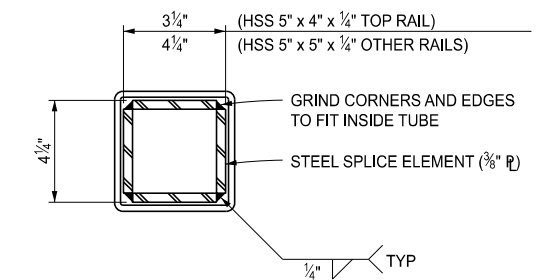
END OF RAIL DETAIL



EXPANSION SPLICE PLAN



SECTION F - F



SECTION G - G



DEPARTMENT DIRECTOR
BRADLEY C. WIEFERICH, PE

(SPECIAL DETAIL)
FHWA APPROVAL

09/11/2024
PLAN DATE

B-27-B

SHEET
3 OF 7

STANDARD PLAN FOR
BRIDGE RAILING,
3 TUBE WITH PICKETS



DEPARTMENT DIRECTOR
BRADLEY C. WIEFERICH, PE

(SPECIAL DETAIL)
FHWA APPROVAL

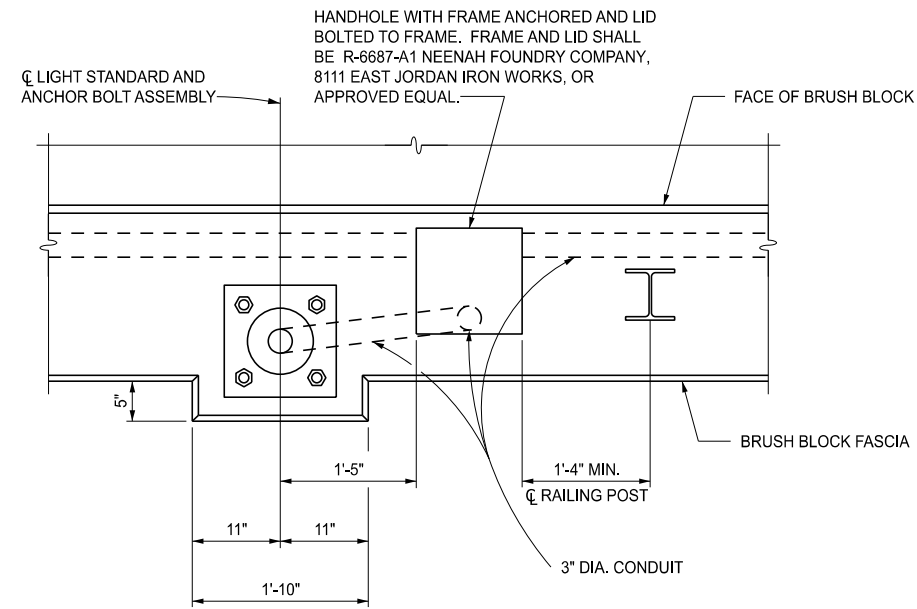
09/11/2024
PLAN DATE

B-27-B

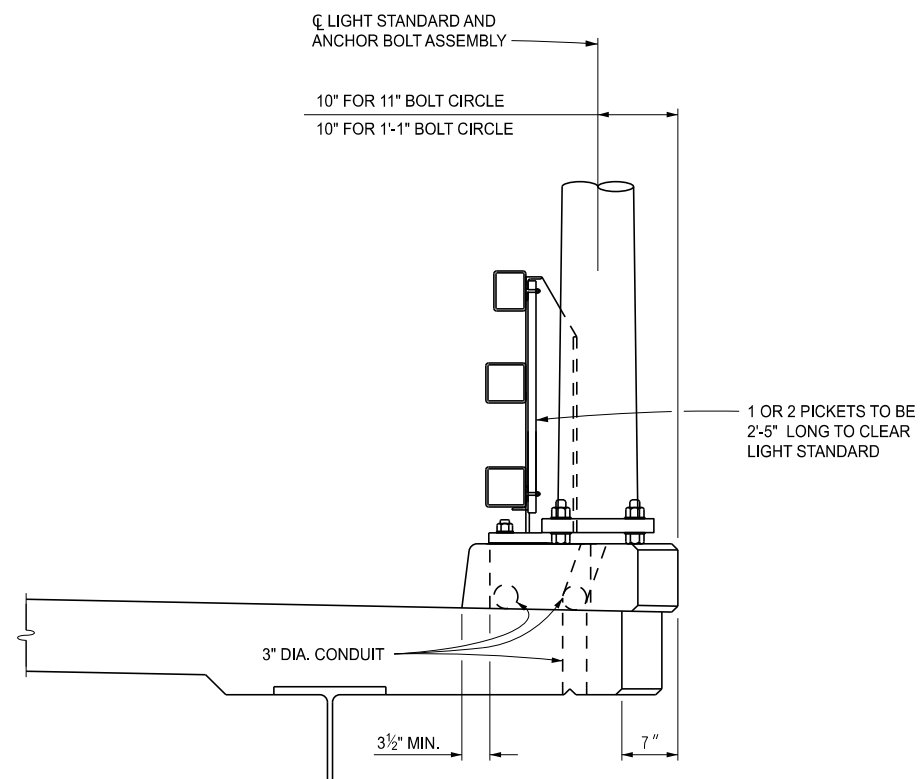
SHEET
4 OF 7

STANDARD PLAN FOR
BRIDGE RAILING,
3 TUBE WITH PICKETS

SECT

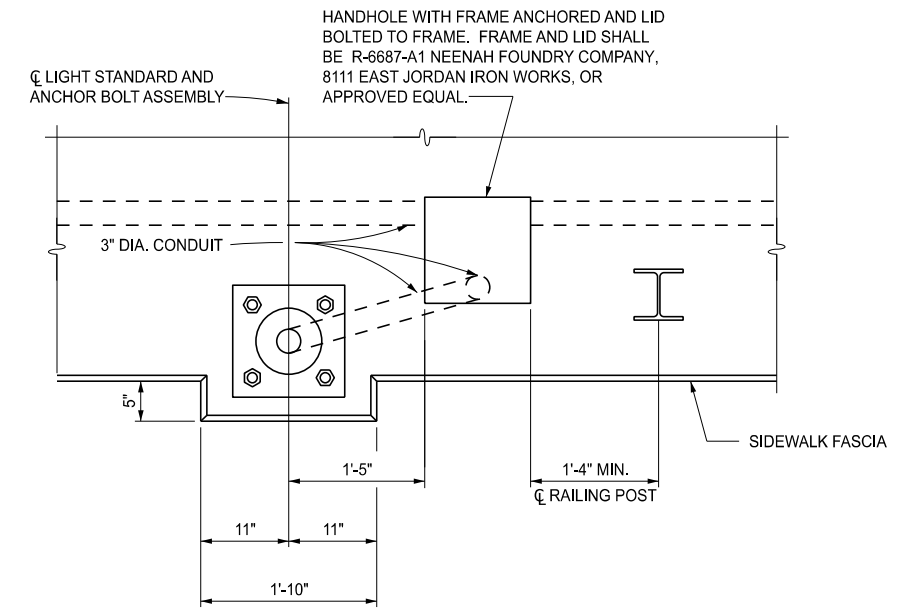


PLAN VIEW AT LIGHT STANDARD WITH BRUSH BLOCK

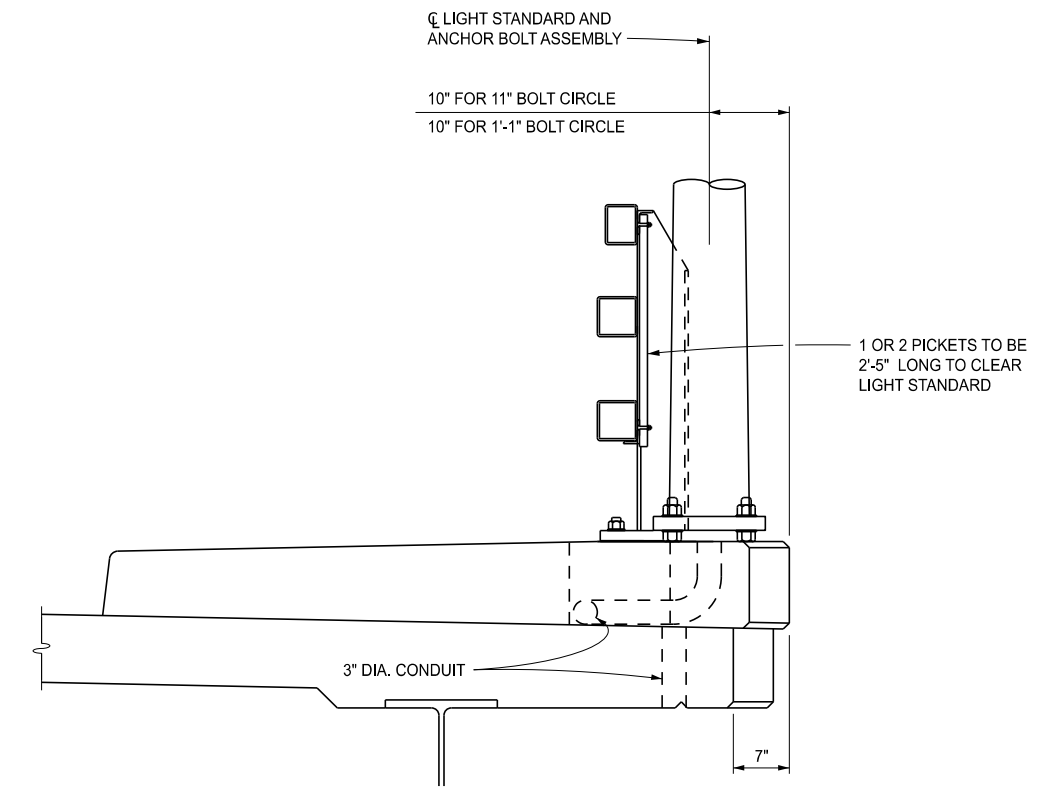


SECTION AT LIGHT STANDARD WITH BRUSH BLOCK

	STANDARD PLAN FOR BRIDGE RAILING, 3 TUBE WITH PICKETS			
	DEPARTMENT DIRECTOR BRADLEY C. WIEFERICH, PE	(SPECIAL DETAIL) FHWA APPROVAL	09/11/2024 PLAN DATE	B-27-B

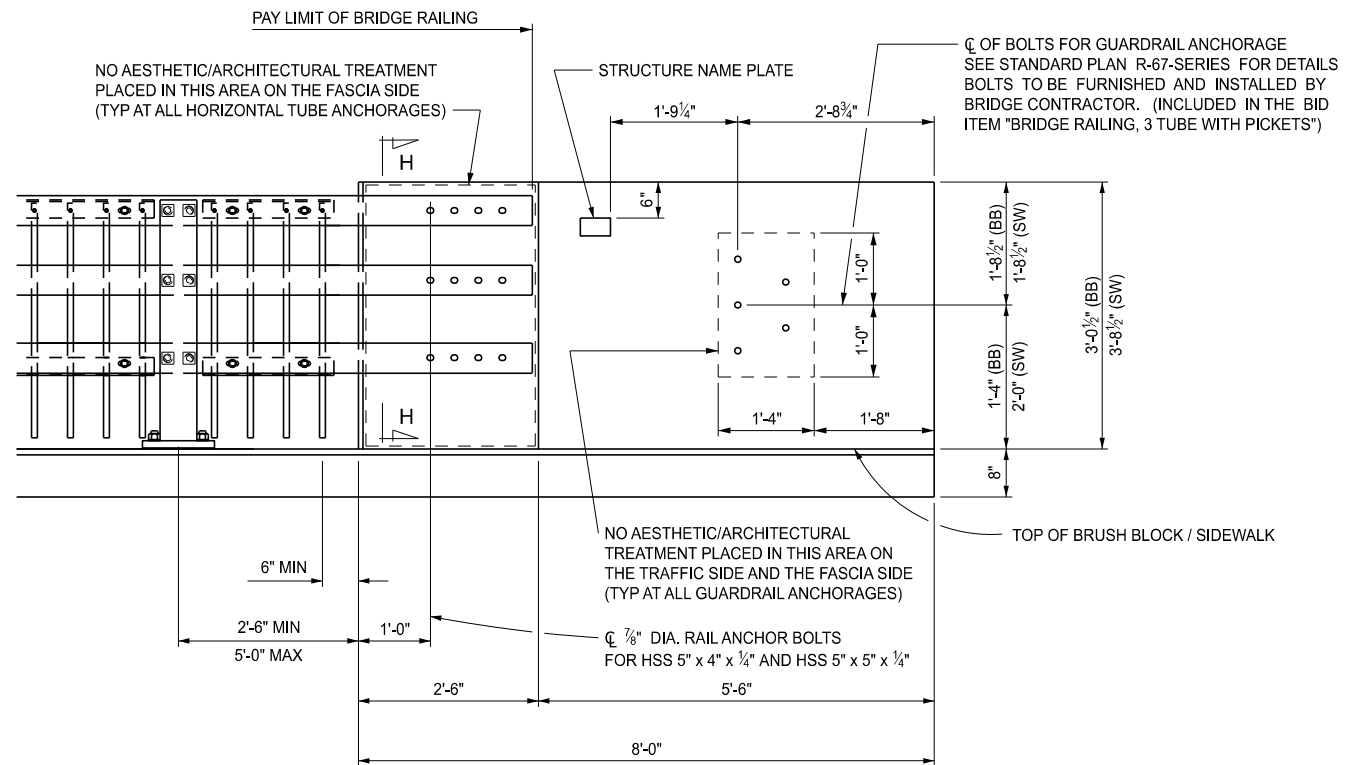


PLAN VIEW AT LIGHT STANDARD WITH SIDEWALK



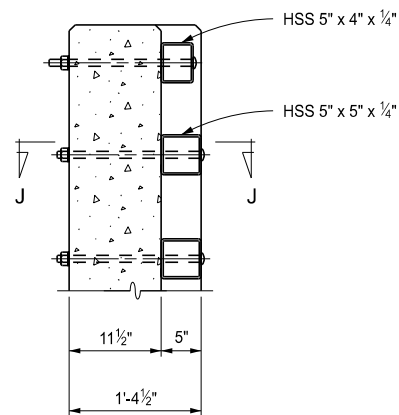
SECTION THROUGH RAILING WITH SIDEWALK

	STANDARD PLAN FOR BRIDGE RAILING, 3 TUBE WITH PICKETS			
	DEPARTMENT DIRECTOR BRADLEY C. WIEFERICH, PE	(SPECIAL DETAIL) FHWA APPROVAL	09/11/2024 PLAN DATE	B-27-B

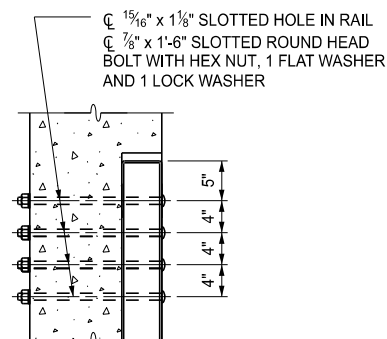


END WALL ELEVATION

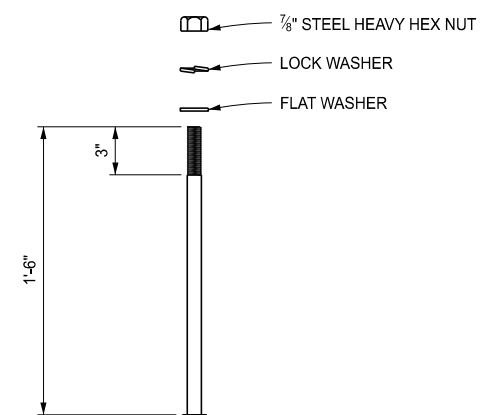
BB = BRUSH BLOCK
SW = SIDEWALK



SECTION H - H



SECTION J - J



7/8" Ø ROUND HEAD BOLT

NOTES:

RAILS SHALL BE CONTINUOUS OVER A MINIMUM OF FOUR (4) POSTS WITHOUT SPLICES WHERE POSSIBLE. RAILS SHALL BE SPLICED IN A PANEL OVER EXPANSION JOINTS.

DETAILS SHOWN ARE ACCORDING TO THE AASHTO SPECIFICATIONS.

ALL WORK AND MATERIAL SHALL BE ACCORDING TO THE STANDARD SPECIFICATIONS FOR CONSTRUCTION UNLESS OTHERWISE NOTED ON THIS PLAN.



DEPARTMENT DIRECTOR
BRADLEY C. WIEFERICH, PE

STANDARD PLAN FOR
**BRIDGE RAILING,
3 TUBE WITH PICKETS**

(SPECIAL DETAIL)
FHWA APPROVAL

09/11/2024
PLAN DATE

B-27-B

SHEET
7 OF 7