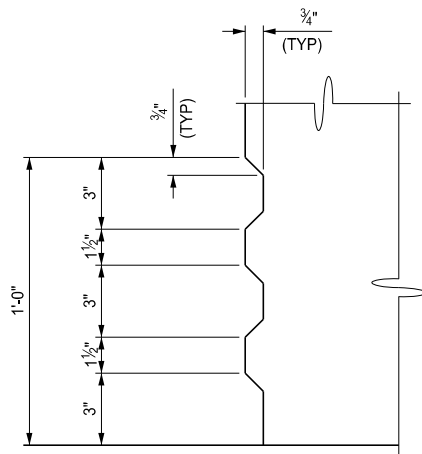


FLUSH MOUNT BRIDGE RAILING



AESTHETIC TREATMENT DETAIL

NOTES:

ALL WORK AND MATERIAL SHALL BE IN ACCORDANCE WITH THE STANDARD SPECIFICATIONS FOR CONSTRUCTION.

DETAILS SHOWN ARE IN ACCORDANCE WITH AASHTO SPECIFICATIONS.

BRIDGE RAILING USED WITH SIDEWALK SHALL BE USED ONLY WITH THE SIDEWALK CONFIGURATION (PROFILE) SHOWN ON THIS STANDARD PLAN.

NO SLIP FORMING OF "BRIDGE RAILING, AESTHETIC PARAPET TUBE" SHALL BE ALLOWED. RAILING SHALL BE CAST IN PLACE.

THE LIGHT STANDARD ANCHOR BOLT ASSEMBLY IS INCLUDED IN THE BID ITEM "BRIDGE RAILING, AESTHETIC PARAPET TUBE". SEE STANDARD PLAN B-103-SERIES.

FOR LIGHT STANDARD ANCHOR BOLT ASSEMBLY DETAILS, IF BRIDGE RAILING, AESTHETIC PARAPET TUBE IS PLACED FLUSH ON THE BRIDGE DECK (WITHOUT SIDEWALK), THE LIGHTING CONDUIT SHALL NOT BE PLACED IN THE RAILING.

A RUBBED FINISH ON THE VERTICAL AND TOP CONCRETE SURFACES OF THE PARAPET RAILING IS REQUIRED.

AESTHETIC TREATMENT AS DETAILED ON THIS SHEET SHALL BE ADDED TO THE FASCIA SIDE OF RAILING IF NO AESTHETIC TREATMENT IS DETAILED ON THE PLAN SHEETS AND SHALL BE INCLUDED IN THE BID ITEM "BRIDGE RAILING, AESTHETIC PARAPET TUBE". AESTHETIC TREATMENT DETAILED ON THE PLAN SHEETS MAY BE UP TO 1" IN CONCRETE DEPTH WITHOUT MODIFICATION TO THE RAILING WIDTH AND SHALL BE INCLUDED IN THE BID ITEM "BRIDGE RAILING, AESTHETIC PARAPET TUBE". AESTHETIC TREATMENT REQUIRING ADDITIONAL RAILING WIDTH OR THE USE OF ELASTOMERIC FORM LINERS SHALL BE PAID FOR SEPARATELY.

* THE HSS 2" x 2" x 1/8" RAIL, SLOTTED HOLE, AND 5/8" BOLT ARE NOT REQUIRED WHEN RAILING IS USED IN COMBINATION WITH PEDESTRIAN FENCING (SEE STANDARD PLAN B-41-SERIES).

APPROVED BY: _____
DIRECTOR, BUREAU OF BRIDGES AND STRUCTURES

APPROVED BY: _____
DIRECTOR, BUREAU OF FIELD SERVICES

APPROVED BY: _____
DIRECTOR, BUREAU OF DEVELOPMENT



DEPARTMENT DIRECTOR
BRADLEY C. WIEFERICH, PE

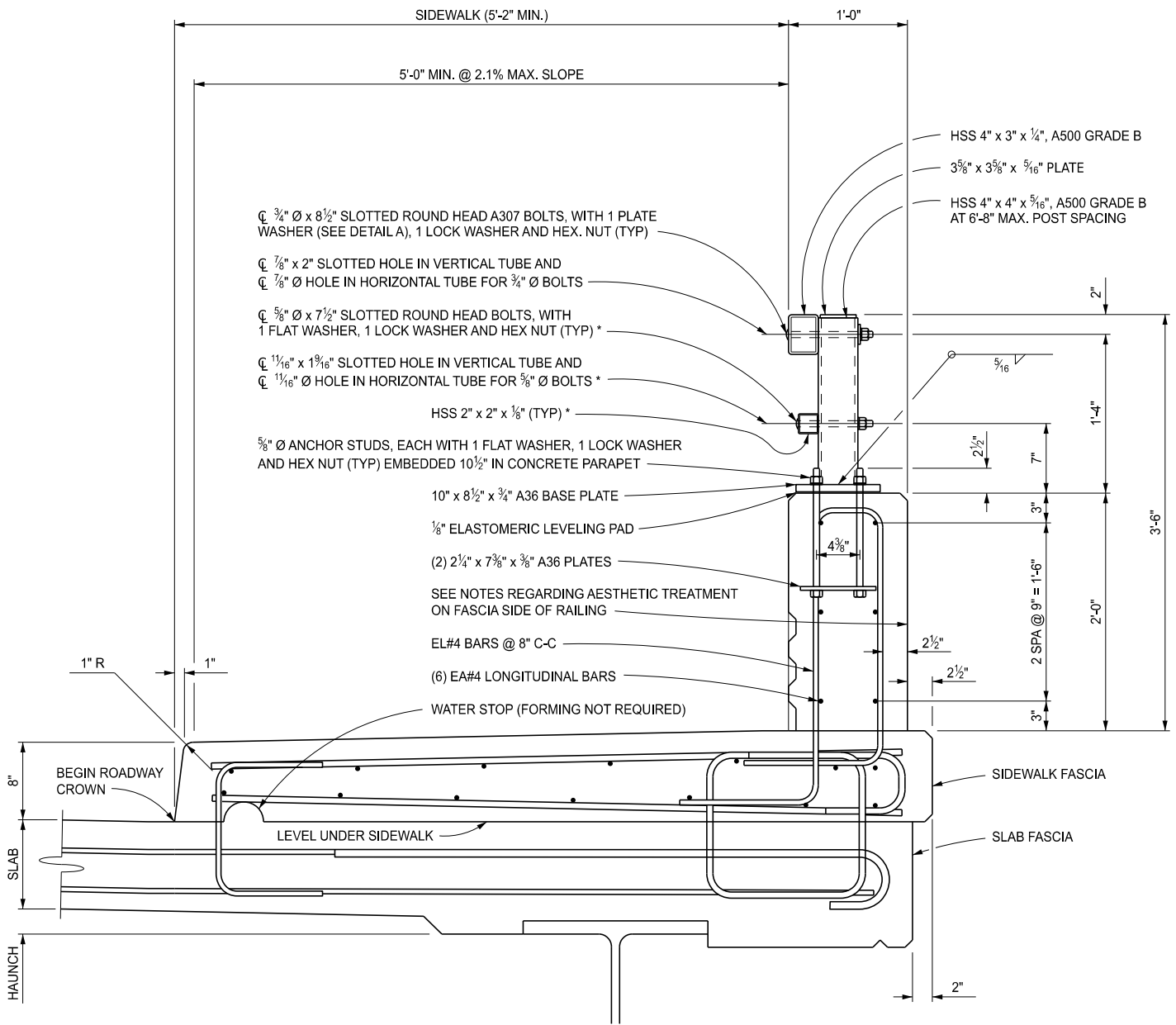
STANDARD PLAN FOR BRIDGE RAILING, AESTHETIC PARAPET TUBE

(SPECIAL DETAIL)
FHWA APPROVAL

06/24/2024
PLAN DATE

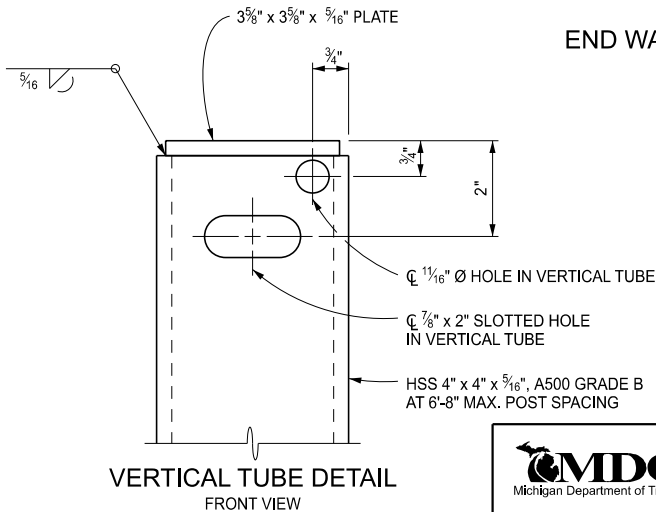
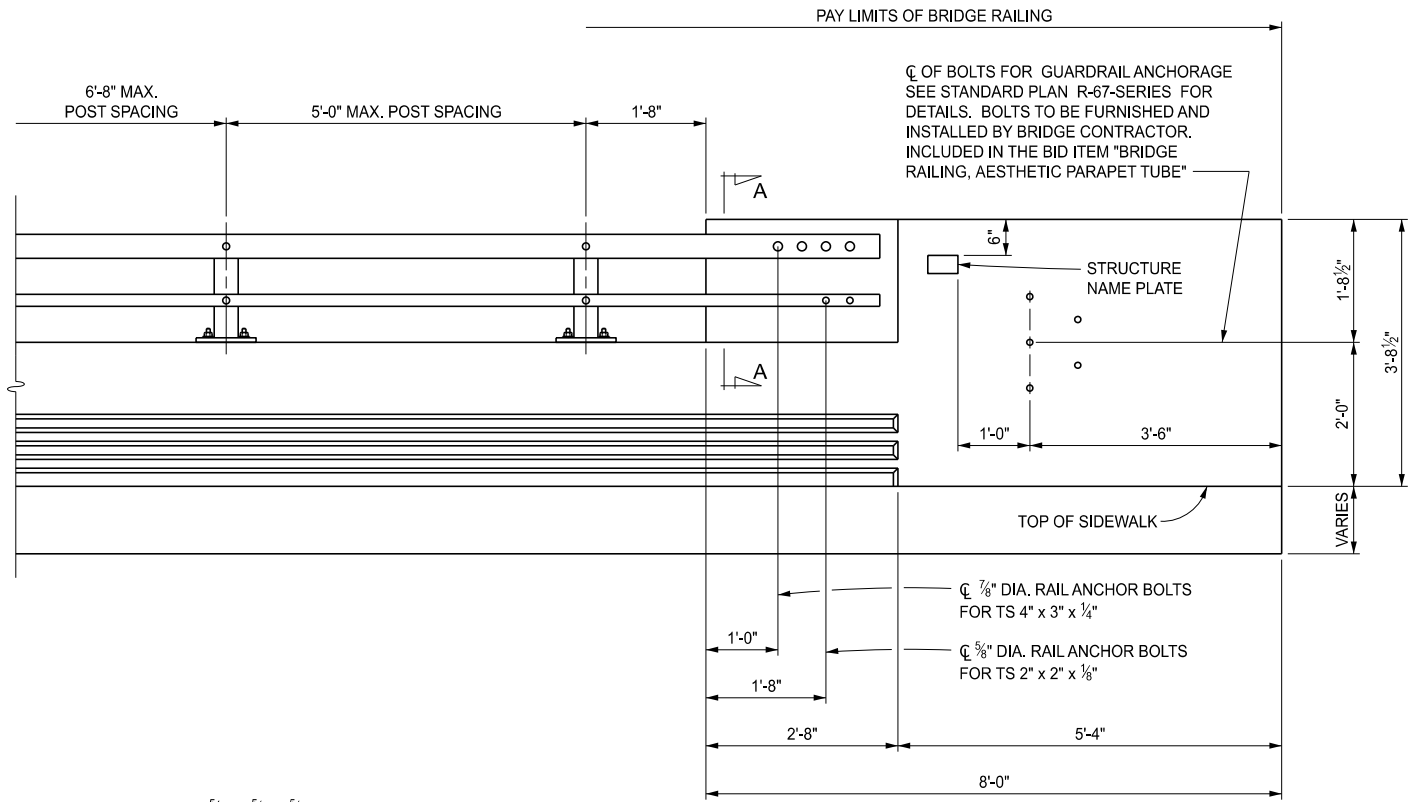
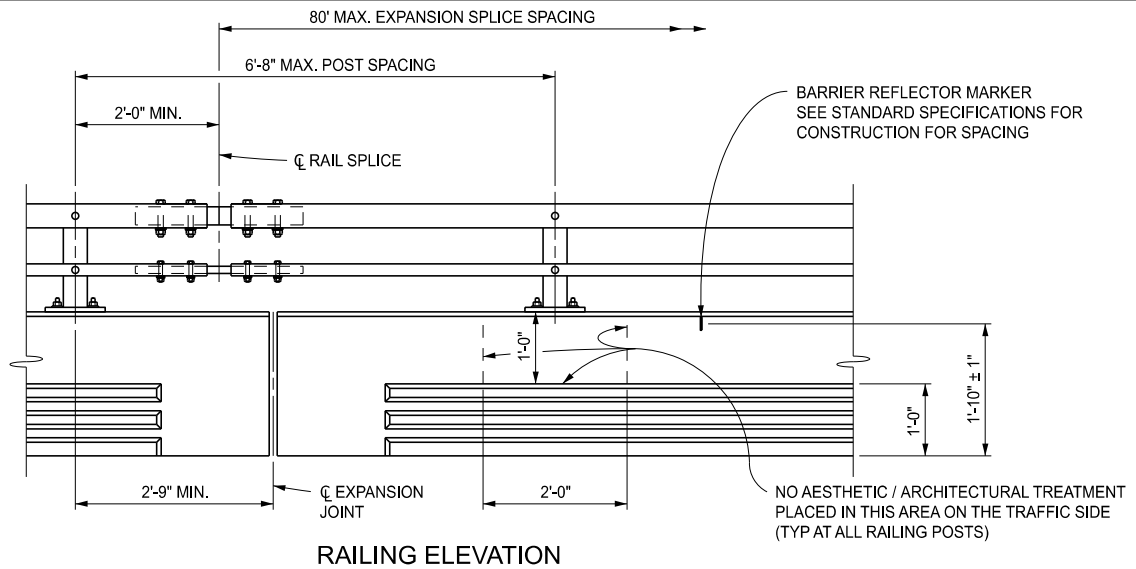
B-25-L

SHEET
1 OF 8



BRIDGE RAILING WITH SIDEWALK

<p>DEPARTMENT DIRECTOR BRADLEY C. WIEFERICH, PE</p>	STANDARD PLAN FOR BRIDGE RAILING, AESTHETIC PARAPET TUBE		B-25-L	SHEET 2 OF 8
	(SPECIAL DETAIL) FHWA APPROVAL	06/24/2024 PLAN DATE		



END WALL ELEVATION

**VERTICAL TUBE DETAIL
FRONT VIEW**



DEPARTMENT DIRECTOR
BRADLEY C. WIEFERICH, PE

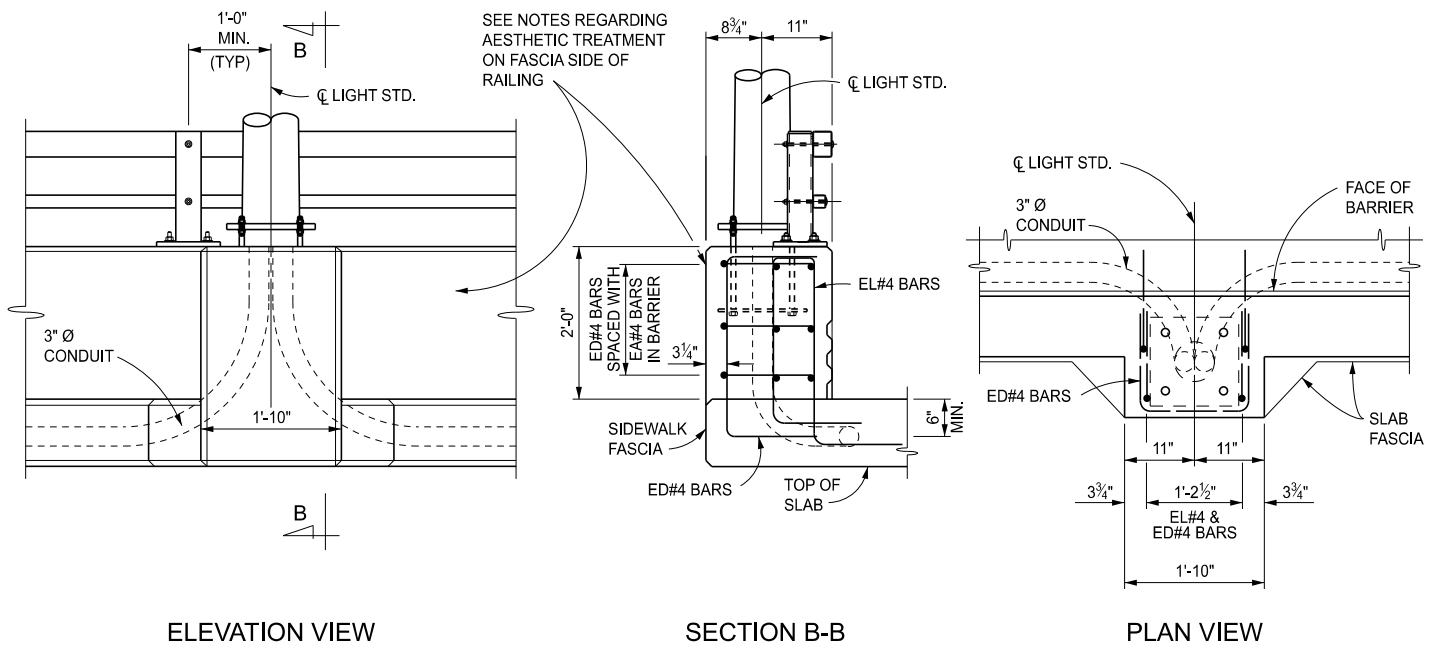
STANDARD PLAN FOR
BRIDGE RAILING, AESTHETIC PARAPET TUBE

(SPECIAL DETAIL)
FHWA APPROVAL

06/24/2024
PLAN DATE

B-25-L

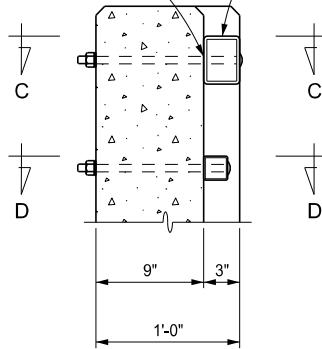
SHEET
3 OF 8



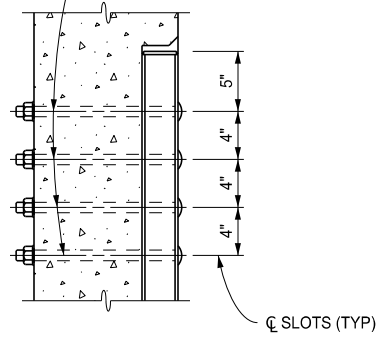
LIGHT STANDARD DETAILS

THREADS SHALL BE EXCLUDED FROM SHEAR PLANE (TYP)

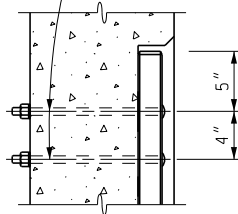
HSS 4" x 3" x 1/4", A500 GRADE B



CL 1 1/16" x 1 1/8" SLOTTED HOLE IN RAIL,
CL 3/8" Ø x 1'-2" SLOTTED ROUND HEAD BOLTS WITH HEX. NUT, 1 FLAT WASHER, 1 LOCK WASHER (TYP)



CL 1 1/16" x 7/8" SLOTTED HOLE IN RAIL,
CL 5/8" Ø x 1'-0 3/4" SLOTTED ROUND HEAD BOLTS WITH HEX. NUT, 1 FLAT WASHER, 1 LOCK WASHER (TYP)



DEPARTMENT DIRECTOR
BRADLEY C. WIEFERICH, PE

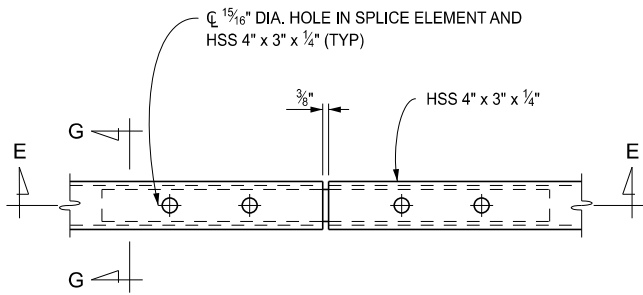
STANDARD PLAN FOR
BRIDGE RAILING, AESTHETIC PARAPET TUBE

(SPECIAL DETAIL)
FHWA APPROVAL

06/24/2024
PLAN DATE

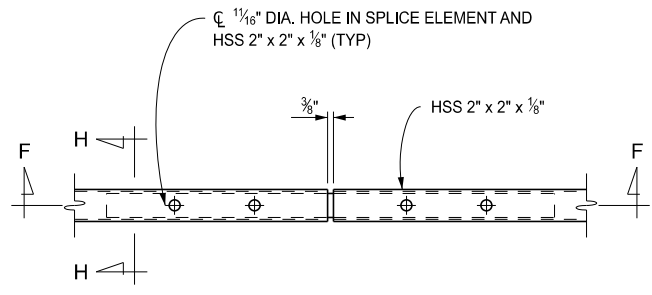
B-25-L

SHEET
4 OF 8



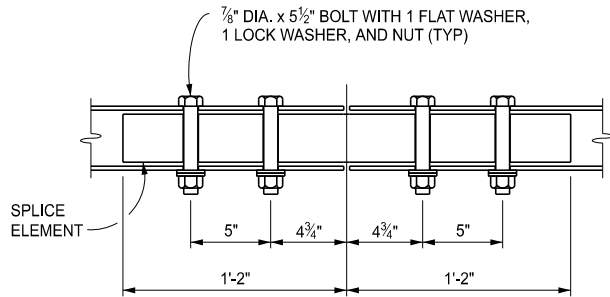
PLAN

HSS 4" x 3" x 1/4"



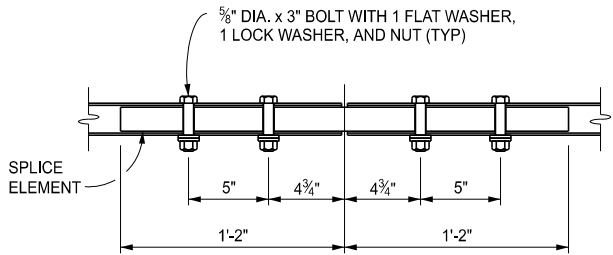
PLAN

HSS 2" x 2" x 1/8"



SECTION E-E

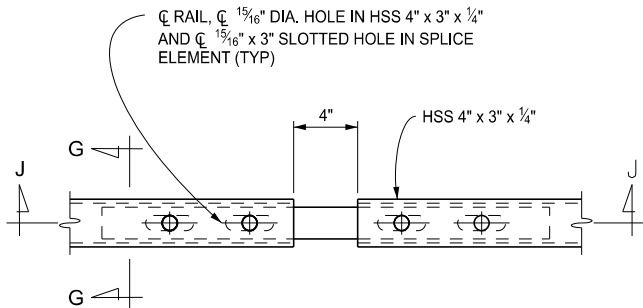
HSS 4" x 3" x 1/4"



SECTION F-F

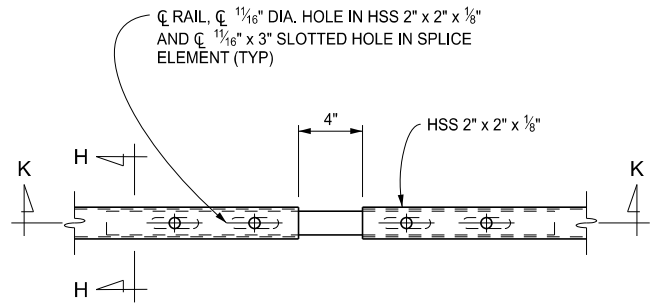
HSS 2" x 2" x 1/8"

FIXED SPLICE DETAILS



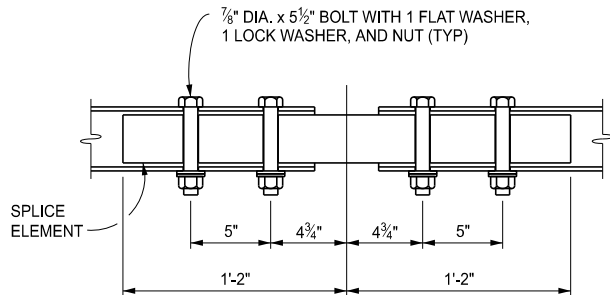
PLAN

HSS 4" x 3" x 1/4"



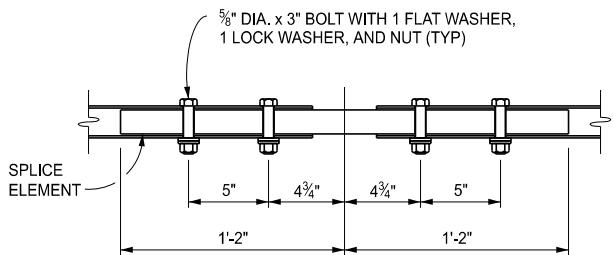
PLAN

HSS 2" x 2" x 1/8"



SECTION J-J

HSS 4" x 3" x 1/4"



SECTION K-K

HSS 2" x 2" x 1/8"

EXPANSION SPLICE DETAILS



DEPARTMENT DIRECTOR
BRADLEY C. WIEFERICH, PE

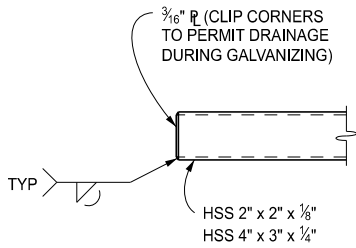
STANDARD PLAN FOR
BRIDGE RAILING, AESTHETIC PARAPET TUBE

(SPECIAL DETAIL)
FHWA APPROVAL

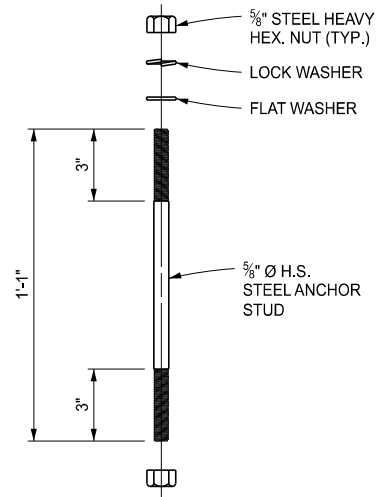
06/24/2024
PLAN DATE

B-25-L

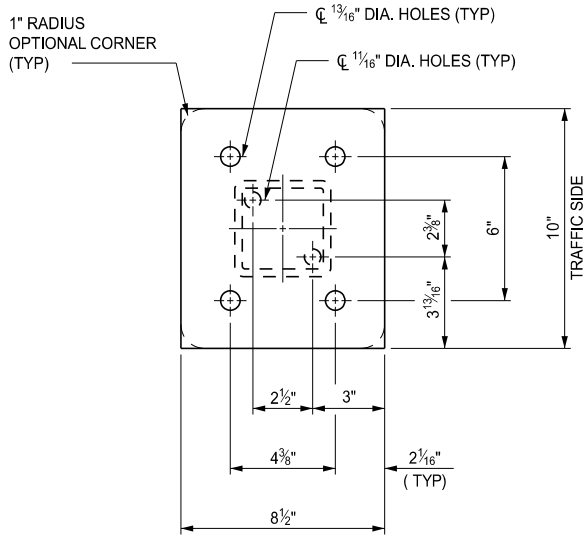
SHEET
5 OF 8



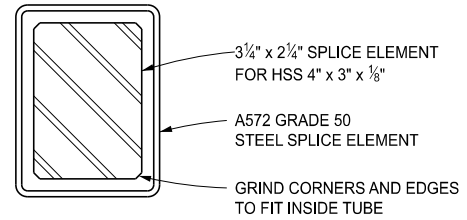
END OF RAIL



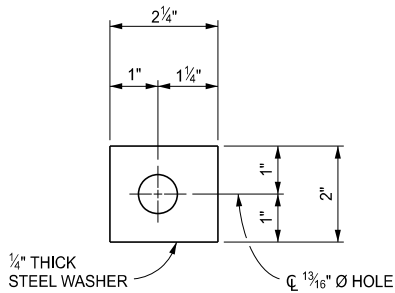
ANCHOR STUD DETAIL



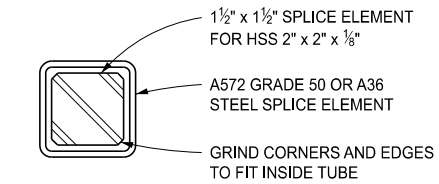
EXTERIOR BASE PLATE



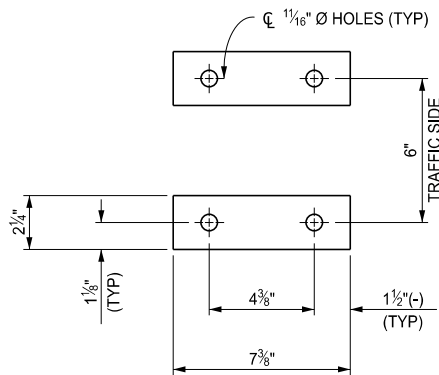
SECTION G-G



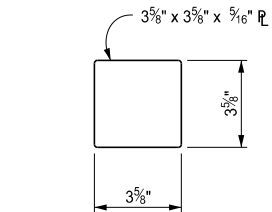
DETAIL A



SECTION H-H



EMBEDDED ANCHOR STUD PLATES



POST COVER PLATE



DEPARTMENT DIRECTOR
BRADLEY C. WIEFERICH, PE

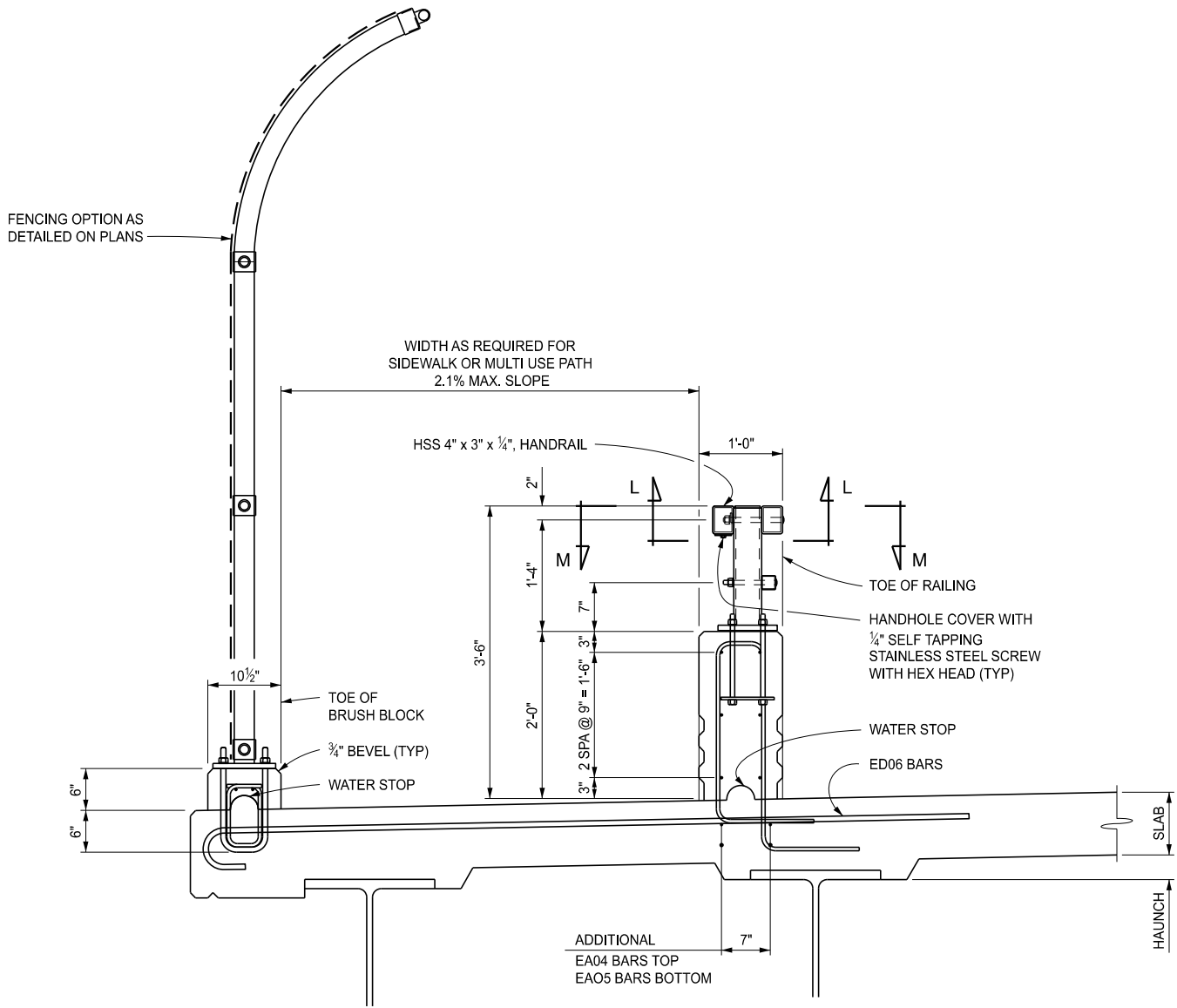
STANDARD PLAN FOR
BRIDGE RAILING, AESTHETIC PARAPET TUBE

(SPECIAL DETAIL)
FHWA APPROVAL

06/24/2024
PLAN DATE

B-25-L

SHEET
6 OF 8



SECTION WITH PEDESTRIAN / MULTI USE PATH

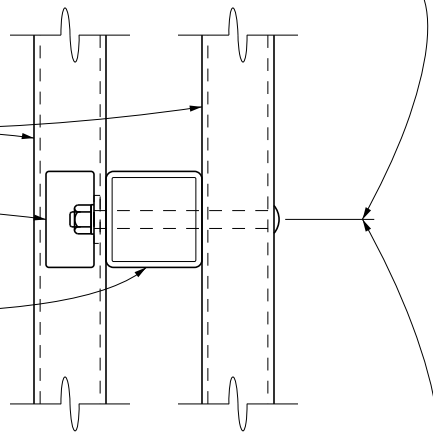
<p>DEPARTMENT DIRECTOR BRADLEY C. WIEFERICH, PE</p>	STANDARD PLAN FOR BRIDGE RAILING, AESTHETIC PARAPET TUBE		B-25-L	SHEET 7 OF 8
	(SPECIAL DETAIL) FHWA APPROVAL	06/24/2024 PLAN DATE		

☉ 3/4" x 8 1/2" SLOTTED ROUND HEAD BOLTS WITH PLATE WASHER, LOCK WASHER, AND HEX NUT (TYP.)

HSS 4" x 3" x 1/4", A500 GRADE B

4" x 2" HANDHOLE

HSS 4" x 4" x 5/16", A500 GRADE B



☉ 7/8" x 2" SLOTTED HOLE. BOTH FACES OF TRAFFIC SIDE TUBE AND INTERIOR FACE OF PEDESTRIAN SIDE TUBE.

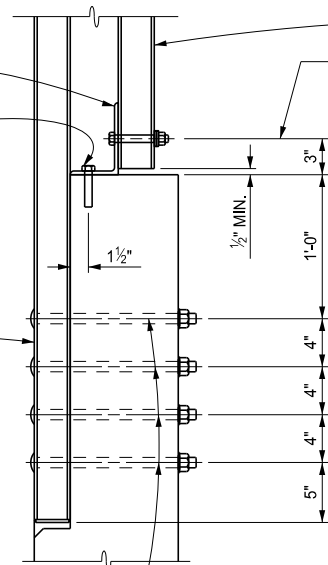
SECTION L-L

6" x 4" x 5/16" (4" LONG) ANGLE

☉ 5/8" Ø STAINLESS STEEL ADHESIVE ANCHORED BOLT

HSS 4" x 3" x 1/4" RAIL

☉ 1 5/16" x 1 1/8" SLOTTED HOLE IN RAIL, ☉ 7/8" Ø x 1'-2" SLOTTED ROUND HEAD BOLTS WITH HEX. NUT, 1 FLAT WASHER, 1 LOCK WASHER (TYP.)



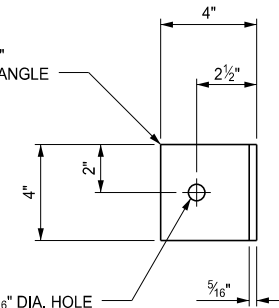
HSS 4" x 3" x 1/4" RAIL

☉ 5/8" Ø x 4 1/2" BOLT WITH 1 PLATE WASHER, 1 LOCK WASHER, AND 1 HEX NUT

☉ 1 1/16" x 2" SLOTTED HOLE IN ANGLE AND ☉ 1 1/16" Ø HOLE IN HSS 4" x 3" x 1/4" RAIL

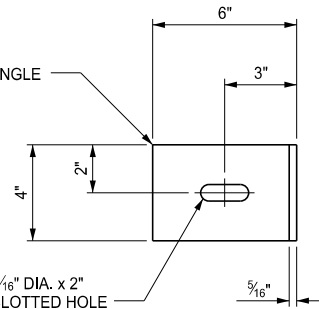
6" x 4" x 5/16" (4" LONG) ANGLE

1 1/16" DIA. HOLE



6" x 4" x 5/16" (4" LONG) ANGLE

1 1/16" DIA. x 2" SLOTTED HOLE



SECTION M-M



DEPARTMENT DIRECTOR
BRADLEY C. WIEFERICH, PE

STANDARD PLAN FOR
BRIDGE RAILING, AESTHETIC PARAPET TUBE

(SPECIAL DETAIL)
FHWA APPROVAL

06/24/2024
PLAN DATE

B-25-L

SHEET
8 OF 8