

TYPICAL ELEVATIONS



PREPARED BY  
DESIGN DIVISION

DRAWN BY: B.L.T.

CHECKED BY: V.Z.

DEPARTMENT DIRECTOR  
Kirk T. Steudle

APPROVED BY: John C. Friend  
ENGINEER OF DELIVERY

APPROVED BY: John S. Pothol  
ENGINEER OF DEVELOPMENT

MICHIGAN DEPARTMENT OF TRANSPORTATION  
BUREAU OF HIGHWAY DEVELOPMENT STANDARD PLAN FOR

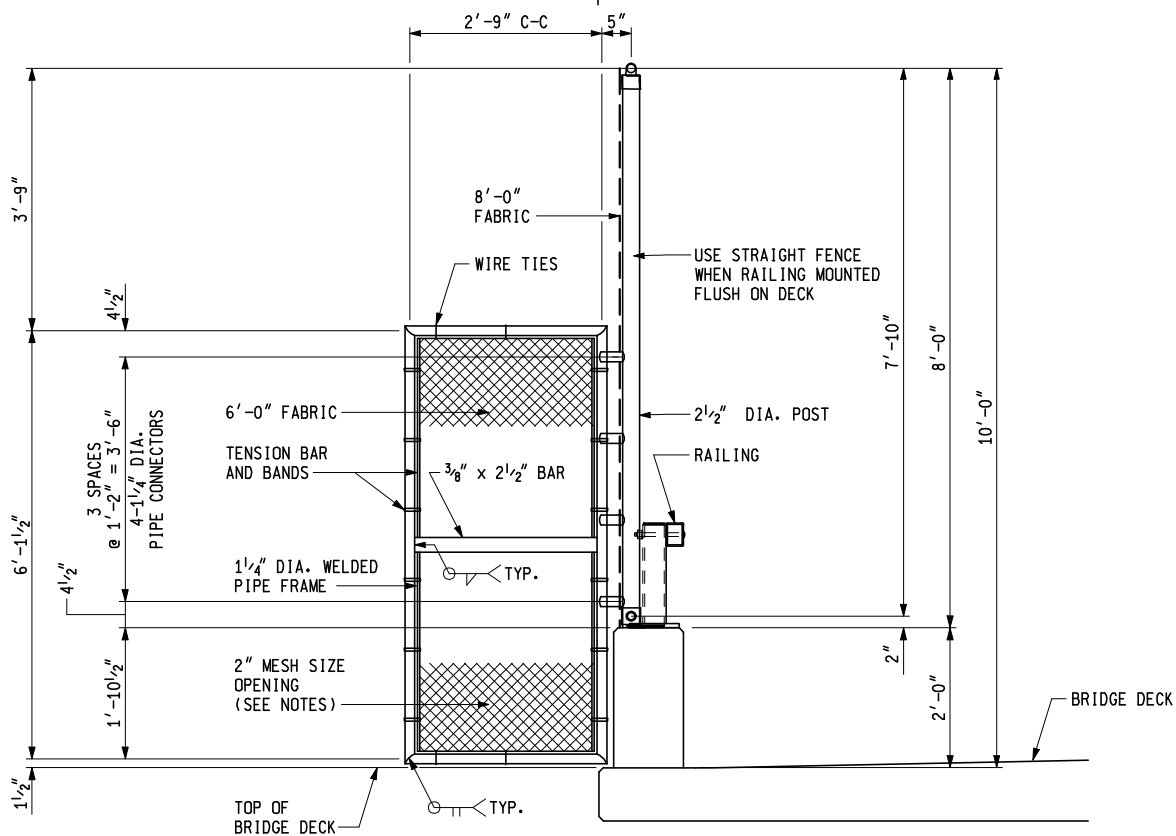
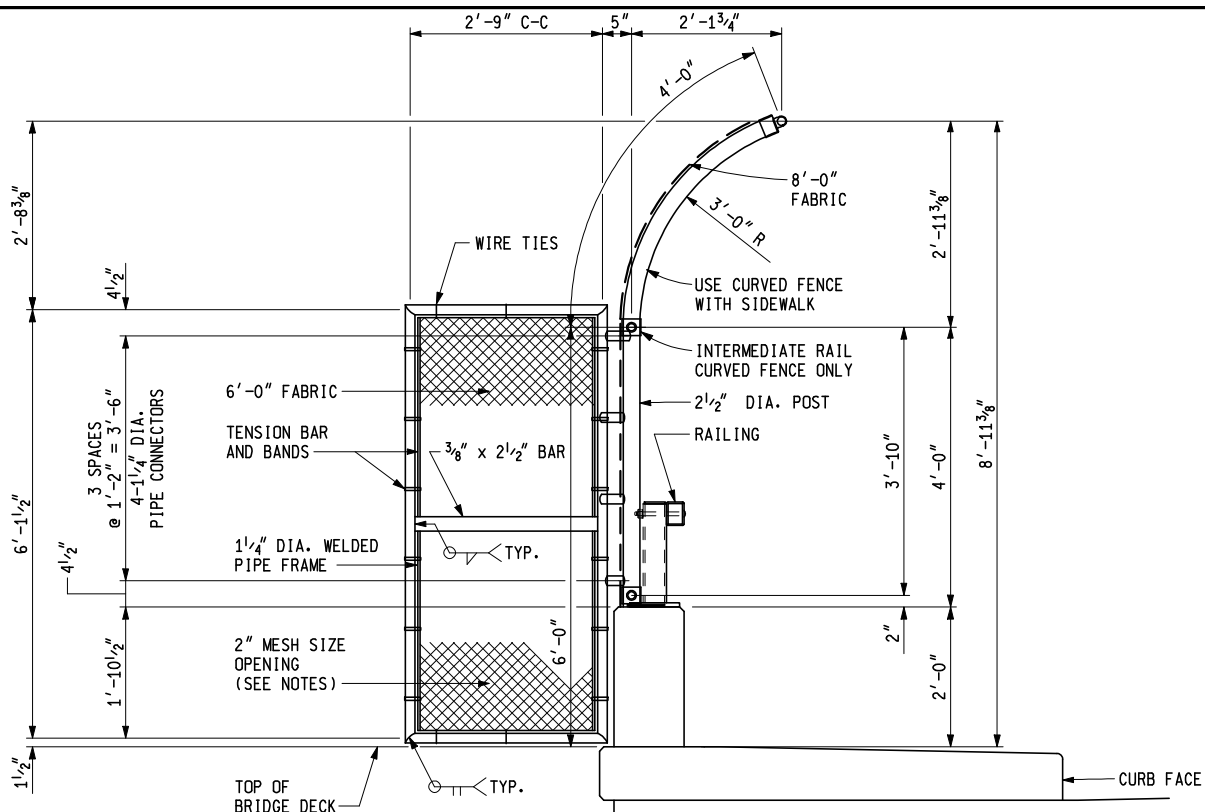
FENCING FOR BRIDGE RAILING,  
AESTHETIC PARAPET TUBE

10-21-2008  
F.H.W.A. APPROVAL

6-20-2008  
PLAN DATE

B-41-C

SHEET  
1 OF 3



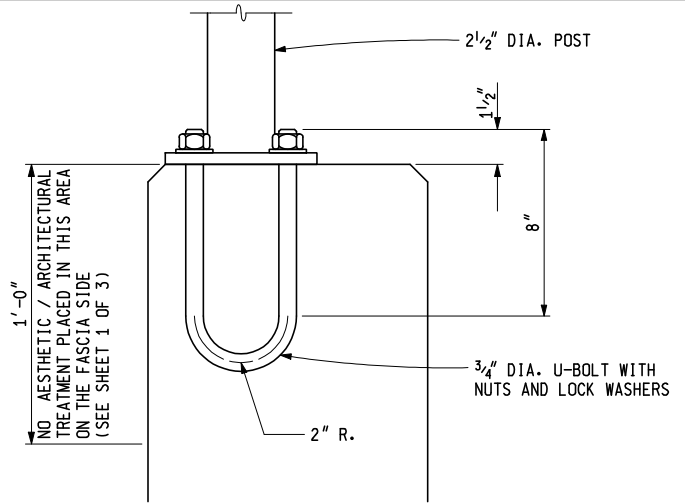
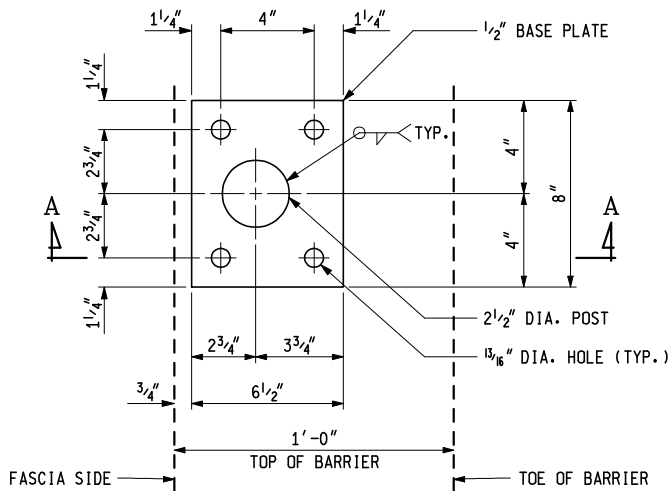
**ANTI-CLIMB / POST DETAIL**

THE ANTI-CLIMB SHIELD SHALL BE LOCATED AT THE SECOND POST FROM THE END OR AS SHOWN ON THE PLANS OR AS DIRECTED BY THE ENGINEER

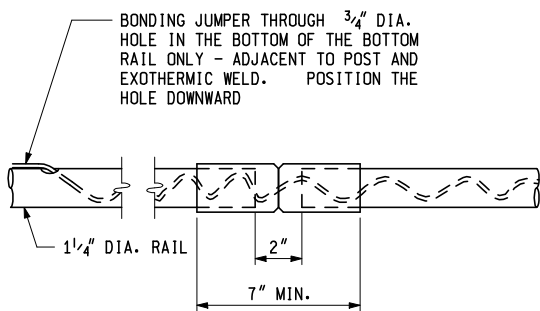
MICHIGAN DEPARTMENT OF TRANSPORTATION  
BUREAU OF HIGHWAY DEVELOPMENT STANDARD PLAN FOR

**FENCING FOR BRIDGE RAILING,  
AESTHETIC PARAPET TUBE**

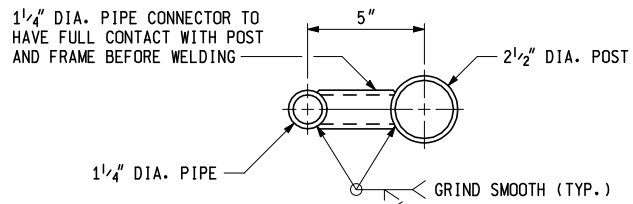
10-21-2008 F.H.W.A. APPROVAL	6-20-2008 PLAN DATE	B-41-C	SHEET 2 OF 3
---------------------------------	------------------------	--------	-----------------



SECTION A - A  
 BASE PLATE DETAILS



EXPANSION SLEEVE DETAIL



PIPE CONNECTION DETAIL

USE AT ANTI-CLIMB SHIELD ONLY

NOTES:

ALL FENCE POSTS SHALL BE 2 1/2" NOMINAL, (2.875" O.D.) PIPE AND ANTI-CLIMB SHIELD PIPE FRAMES SHALL BE 1 1/4" NOMINAL, (1.66" O.D.) PIPE, IN CONFORMANCE WITH ASTM F669, CLASS 1C.

HORIZONTAL RAILS SHALL BE 1 1/4" NOMINAL (1.66" O.D.) PIPE IN CONFORMANCE WITH ASTM F669, CLASS 1C OR ASTM F1083.

ALL FENCE COMPONENTS, UNLESS OTHERWISE INDICATED, SHALL BE GALVANIZED ACCORDING TO MDOT'S CURRENT STANDARD SPECIFICATIONS FOR CONSTRUCTION.

ALL POSTS, ANTI-CLIMB SHIELDS OR OTHER COMPONENTS TO BE FABRICATED SHALL BE FURNISHED "BLACK" AND THEN GALVANIZED AFTER FABRICATION.

DAMAGED GALVANIZED SURFACES (NEW AND EXISTING) SHALL BE REPAIRED IN CONFORMANCE WITH MDOT'S CURRENT STANDARD SPECIFICATIONS FOR CONSTRUCTION.

FENCE FABRIC SHALL BE #9 GAGE MESH AND BE GALVANIZED OR ALUMINUM COATED IN CONFORMANCE WITH MDOT'S CURRENT STANDARD SPECIFICATIONS FOR CONSTRUCTION. MESH SIZE OPENING SHALL BE 2" UNLESS 1" MESH SIZE OPENING IS APPROVED BY THE TRAFFIC AND SAFETY DIVISION AND NOTED ON DESIGN PLANS. ALL DETAILS ON STANDARD PLAN SHALL APPLY REGARDLESS OF MESH SIZE OPENINGS.

GALVANIZED 3/8" DIAMETER TRUSS RODS SHALL EXTEND DIAGONALLY FROM THE TOP CONNECTION CLIP AT EACH TENSION BAR TO THE ADJACENT POST, EXCEPT ACROSS EXPANSION JOINTS AND AT LIGHT STANDARDS WITH A CURVED FENCE DETAIL, WHEN THERE ARE TWO OR MORE CONTINUOUS PANELS OF FABRIC.

ALL POSTS SHALL BE INSTALLED PLUMB AND MAY BE SHIMMED WITH NON-METALLIC SHIMS, APPROVED BY THE ENGINEER. COSTS FOR SHIMMING SHALL BE INCLUDED IN THE PAY ITEM "FENCE, STRUCTURE".

THE GROUNDING CABLE SHALL BE PLACED IN A NON-METALLIC CONDUIT, FROM THE END POST CONNECTION TO THE GROUND ROD CONNECTION. THE CONDUIT SHALL BE SECURED TO THE STRUCTURE USING EITHER EXPANSION BOLTS OR ADHESIVE ANCHORED BOLTS WITH GALVANIZED METAL STRIPS, AS APPROVED BY THE ENGINEER.

IN THE EVENT THAT THE INSTALLATION OF A GROUND ROD IS IMPRACTICAL, THE GROUNDING CABLE SHALL BE CONNECTED TO THE NEAREST LIGHT STANDARD USING A MECHANICAL CLIP, ONLY AFTER OBTAINING PERMISSION FROM THE LOCAL PUBLIC LIGHTING AUTHORITY.

EXPANSION JOINT SLEEVES, FOR HORIZONTAL RAILS, SHALL BE THE MANUFACTURER'S STANDARD OVERSIZED SLEEVES, CRIMPED IN THE MIDDLE.

NO SLIP FORMING OF BRIDGE RAILING, AESTHETIC PARAPET TUBE SHALL BE ALLOWED. RAILINGS SHALL BE CAST IN PLACE.

THE U-BOLTS FOR FENCING BASE PLATES SHALL BE ACCURATELY POSITIONED ACCORDING TO THE PLANS AND FIRMLY HELD BY MEANS OF A TEMPLATE.

THE HSS 2" x 2" x 1/8" RAIL SHALL NOT BE REQUIRED ON THE BRIDGE RAILING, AESTHETIC PARAPET TUBE USED IN COMBINATION WITH PEDESTRAIN FENCING.

ALL LABOR, MATERIAL AND EQUIPMENT REQUIRED TO INSTALL PEDESTRIAN FENCING SHALL BE INCLUDED IN PAY ITEM "FENCE, STRUCTURE".

MICHIGAN DEPARTMENT OF TRANSPORTATION  
 BUREAU OF HIGHWAY DEVELOPMENT STANDARD PLAN FOR

FENCING FOR BRIDGE RAILING,  
 AESTHETIC PARAPET TUBE

10-21-2008  
 F.H.W.A. APPROVAL

6-20-2008  
 PLAN DATE

B-41-C

SHEET  
 3 OF 3