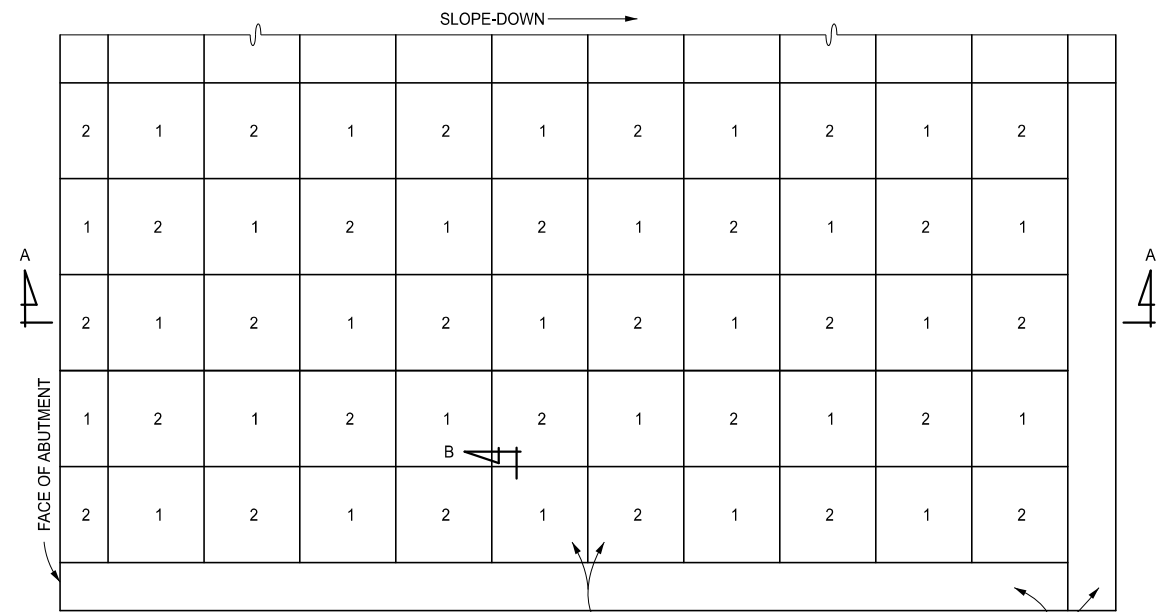
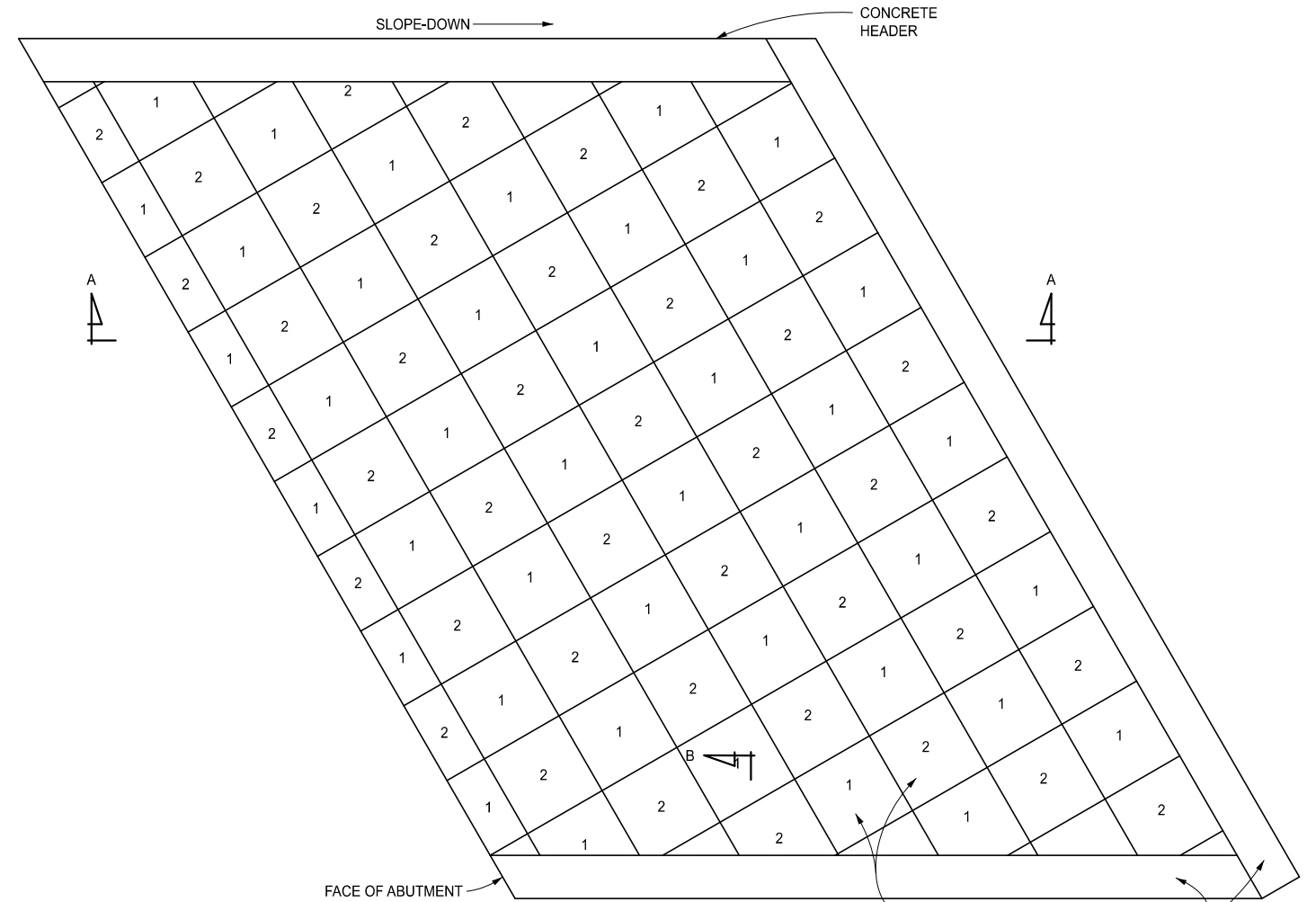


SLOPE PAVING, CONC



PLAN

SLOPE PAVING, CONC



PLAN AT SKEW
(APPROXIMATELY 15 DEGREES OR MORE)

APPROVED BY: _____
DIRECTOR, BUREAU OF BRIDGES AND STRUCTURES

APPROVED BY: _____
DIRECTOR, BUREAU OF FIELD SERVICES

APPROVED BY: _____
DIRECTOR, BUREAU OF DEVELOPMENT



DEPARTMENT DIRECTOR
BRADLEY C. WIEFERICH, PE

STANDARD PLAN FOR
STANDARD SLOPE PAVING DETAILS

(SPECIAL DETAIL) 09/18/2023
FHWA APPROVAL PLAN DATE

B-102-D

SHEET
1 OF 4



DEPARTMENT DIRECTOR
BRADLEY C. WIEFERICH, PE

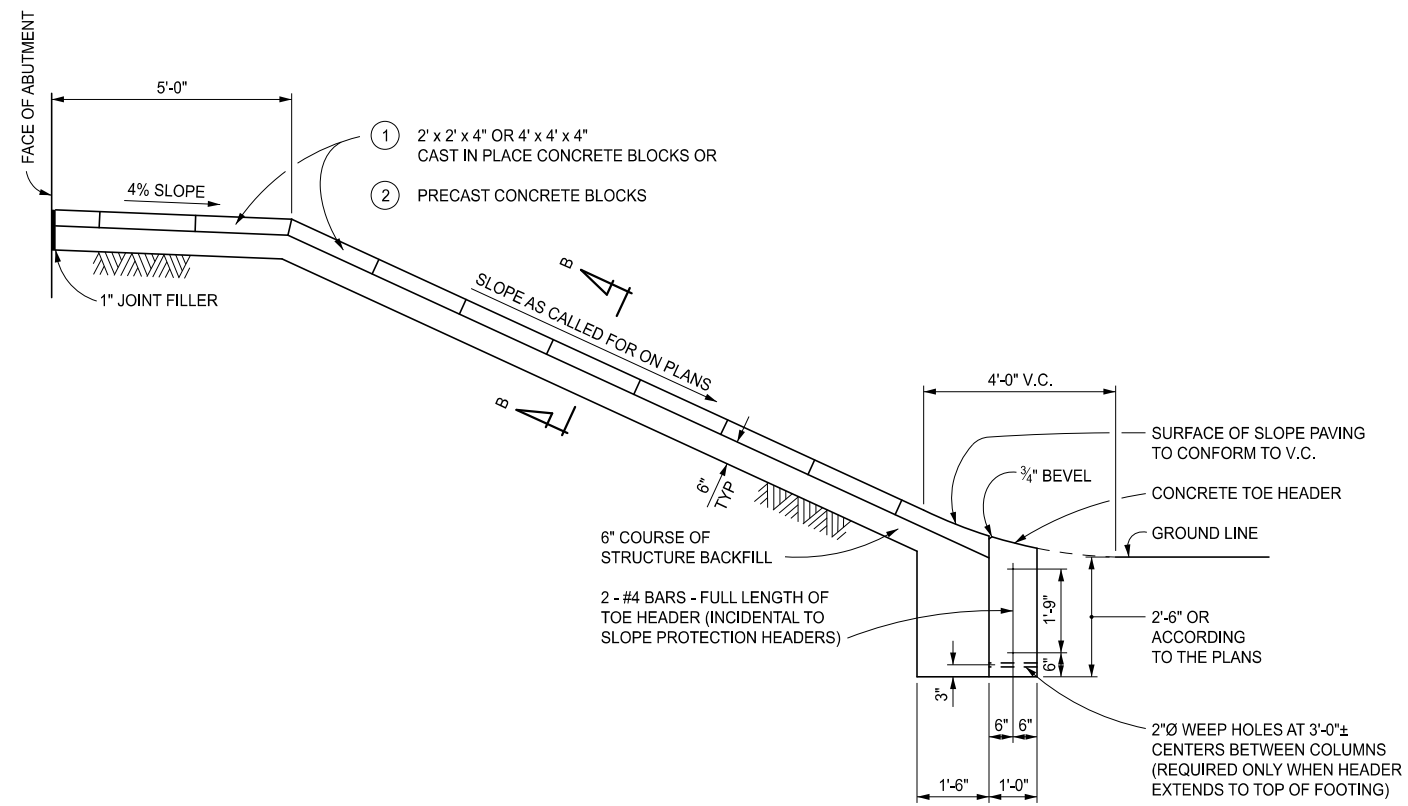
STANDARD PLAN FOR
STANDARD SLOPE PAVING DETAILS

(SPECIAL DETAIL) 09/18/2023
FHWA APPROVAL PLAN DATE

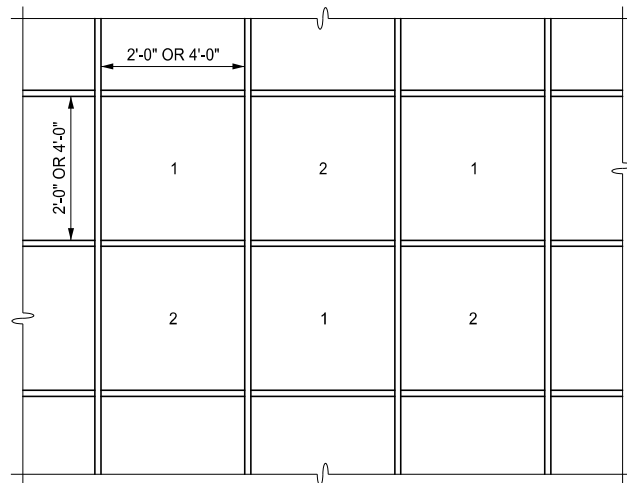
B-102-D

SHEET
2 OF 4

SECT



SECTION A-A

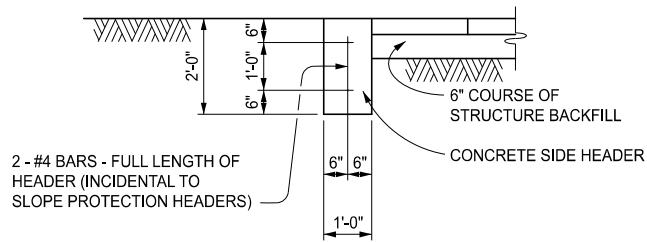


POUR SEQUENCE

CAST POURS NUMBER 1. REMOVE FORMS. CAST POURS NUMBER 2. IT IS PERMISSIBLE TO POUR THE SLOPE PAVING BLOCKS USING ONE OF THE FOLLOWING ALTERNATIVES.

ALTERNATE POUR SEQUENCES

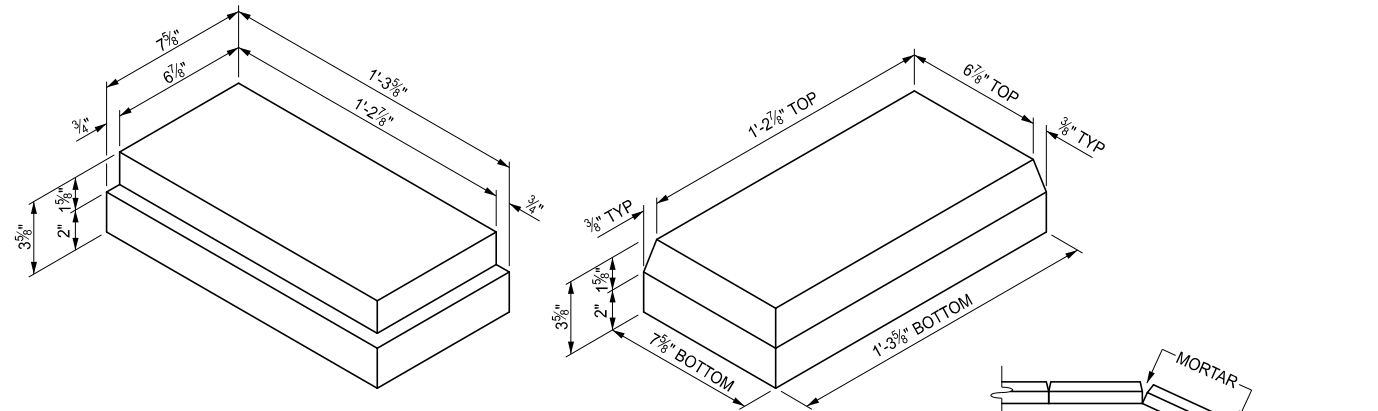
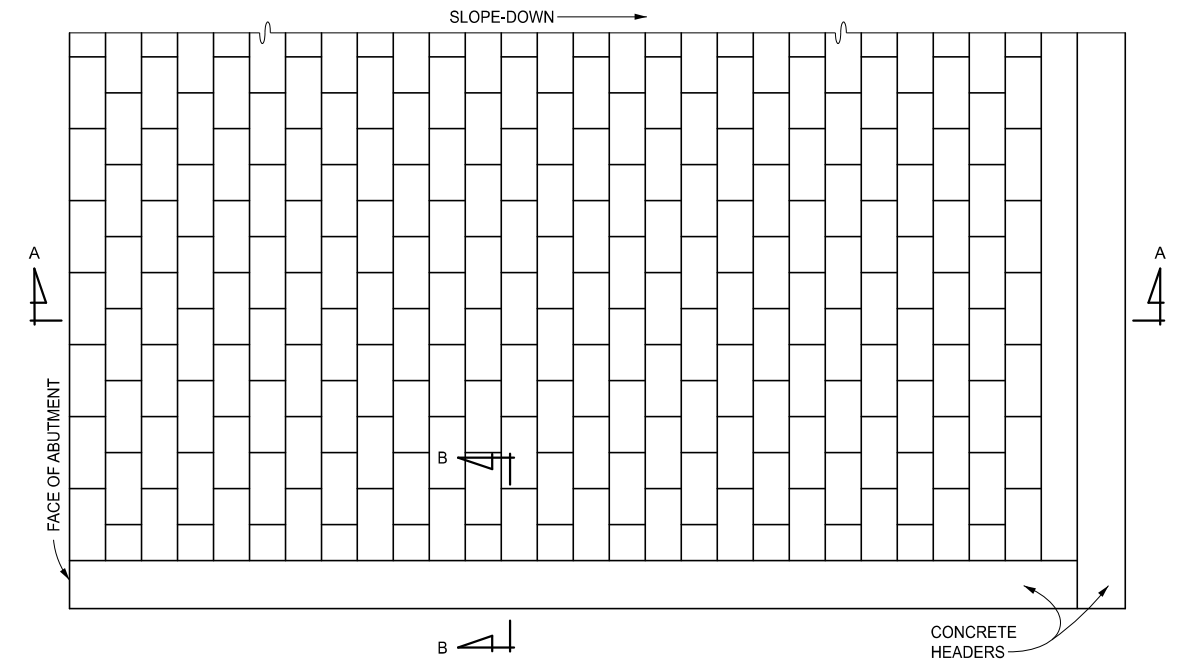
- OPTION 1: POUR BLOCKS IN ROWS OR STRIPS USING 1" TROWELED JOINTS FOLLOWED BY 3" DEEP SAW CUT JOINTS WITHIN 48 HOURS OF CASTING.
- OPTION 2: POUR BLOCKS IN ROWS OR STRIPS USING FULL DEPTH 1/8" THICK HOT DIPPED GALVANIZED METAL DIVIDERS.



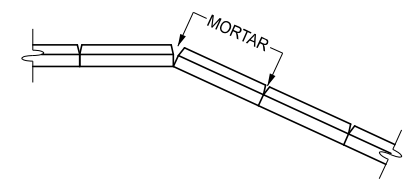
SECTION B-B

ESTIMATED CONCRETE QUANTITIES	
SLOPE PAVING, CONC	0.01 cyd / sft
SIDE HEADER, CONC	0.075 cyd / ft
TOE HEADER, CONC	0.103 cyd / ft

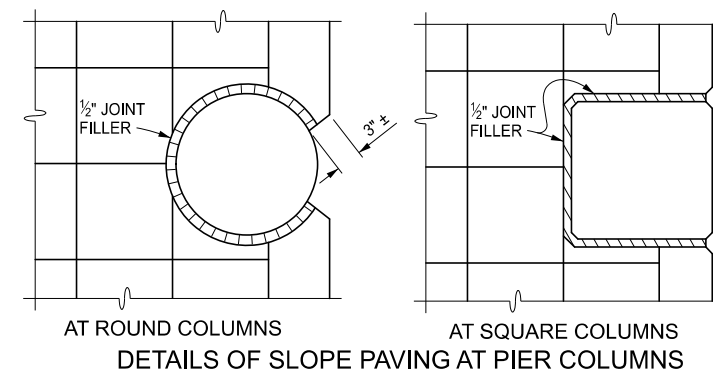
SLOPE PAVING, PRECAST CONC



BASIC BLOCKS
(RECTANGULAR OR V-JOINT AT OPTION OF MANUFACTURER)



MORTARING DETAILS
(MORTAR JOINTS AFTER BLOCKS ARE IN PLACE)



NOTES:

1/2" JOINT FILLER SHALL BE PLACED BETWEEN THE PIER COLUMNS OR PIER WALLS AND THE SLOPE PAVING. THE JOINT FILLER SHALL ALSO BE PLACED BETWEEN THE HEADER AND PIER COLUMNS. THE JOINT FILLER SHALL BE THE FULL DEPTH OF SLOPE PAVEMENT OR HEADER.

A VARIATION OF 1/8" PLUS OR MINUS IN THE DIMENSIONS FOR PRECAST CONCRETE BLOCKS WILL BE ALLOWED.

VARIATIONS IN JOINT DETAILS FOR SLOPE PAVING, PRECAST CONCRETE WILL BE ACCEPTABLE SUBJECT TO APPROVAL OF THE ENGINEER.

<p>DEPARTMENT DIRECTOR BRADLEY C. WIEFERICH, PE</p>	STANDARD PLAN FOR STANDARD SLOPE PAVING DETAILS			SHEET 3 OF 4
	(SPECIAL DETAIL)	09/18/2023	B-102-D	
	FHWA APPROVAL	PLAN DATE		

<p>DEPARTMENT DIRECTOR BRADLEY C. WIEFERICH, PE</p>	STANDARD PLAN FOR STANDARD SLOPE PAVING DETAILS			SHEET 4 OF 4 SECT
	(SPECIAL DETAIL)	09/18/2023	B-102-D	
	FHWA APPROVAL	PLAN DATE		