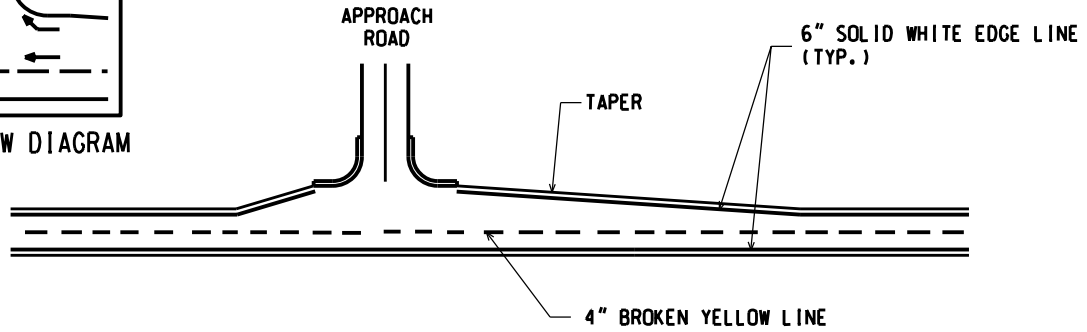
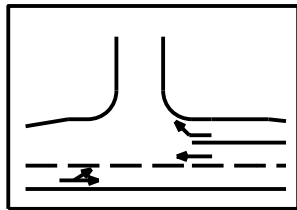


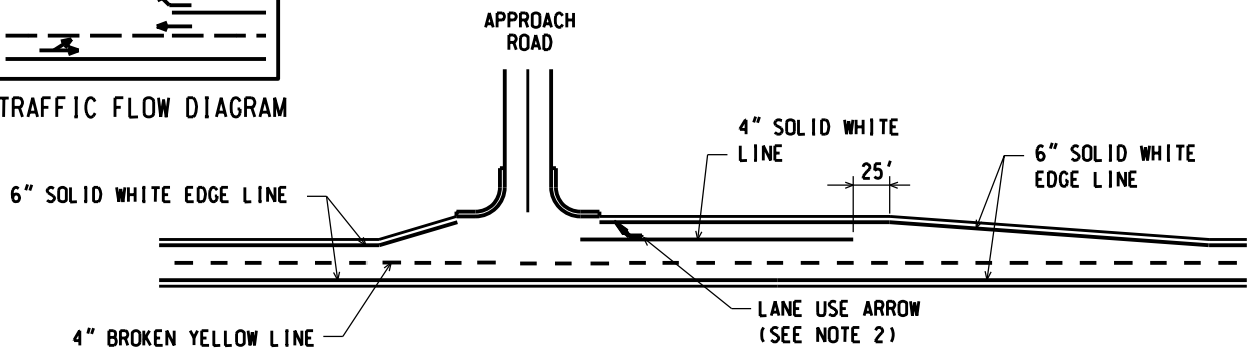
TRAFFIC FLOW DIAGRAM



### INTERSECTION WITH RIGHT TURN TAPER



TRAFFIC FLOW DIAGRAM



### INTERSECTION WITH RIGHT TURN LANE

**Notes:**

1. Paint intersection tapers greater than 50 ft in length.
2. Arrow markings should be installed according to PAVE-900, PAVE-935 and PAVE-940, if applicable.
3. Where the paved shoulder is 5 ft or greater in width approaching an intersection, radius the edge line to the curb/edge of pavement on both sides of the intersection. For narrower shoulders, the edge line may be simply discontinued across the intersection (blunt ends).



PREPARED BY  
TSMO DIVISION

DRAWN BY: LMF

CHECKED BY: JGM

DEPARTMENT DIRECTOR  
Paul C. Ajegba

Gregg Brunner, P.E. Gregg Brunner  
Nov 2 2020 12:08 PM

APPROVED BY: DIRECTOR, BUREAU OF FIELD SERVICES

Bradley C. Wiefelrich Bradley C. Wiefelrich  
Nov 5 2020 5:48 AM

APPROVED BY: DIRECTOR, BUREAU OF DEVELOPMENT

MICHIGAN DEPARTMENT OF TRANSPORTATION  
BUREAU OF DEVELOPMENT STANDARD PLAN FOR

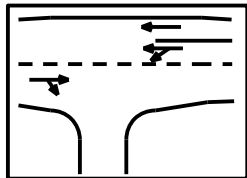
## PAVEMENT MARKINGS FOR NON-SIGNALIZED INTERSECTIONS

09/21/20  
F.H.W.A. APPROVAL

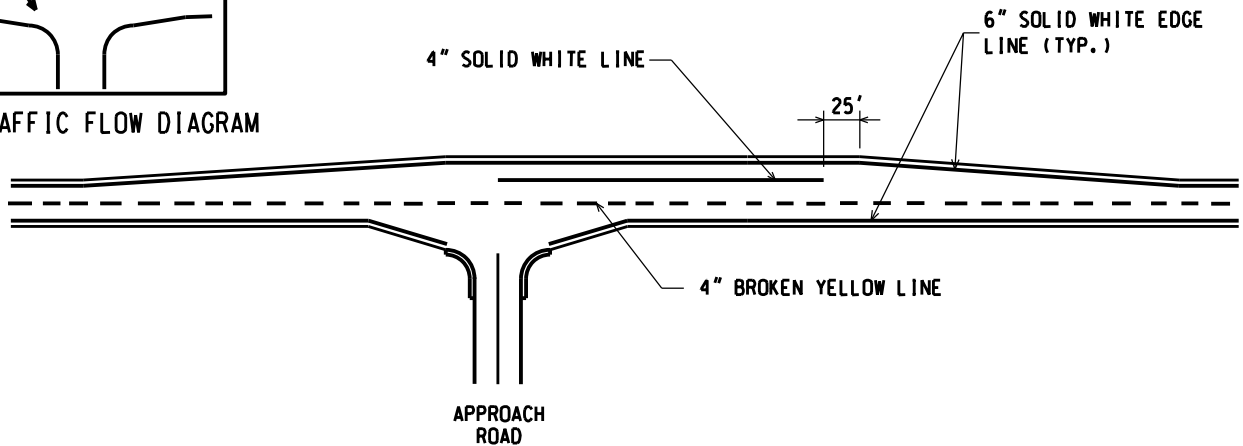
03/25/20  
PLAN DATE

PAVE-930-D

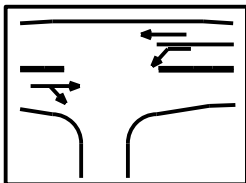
SHEET  
1 OF 8



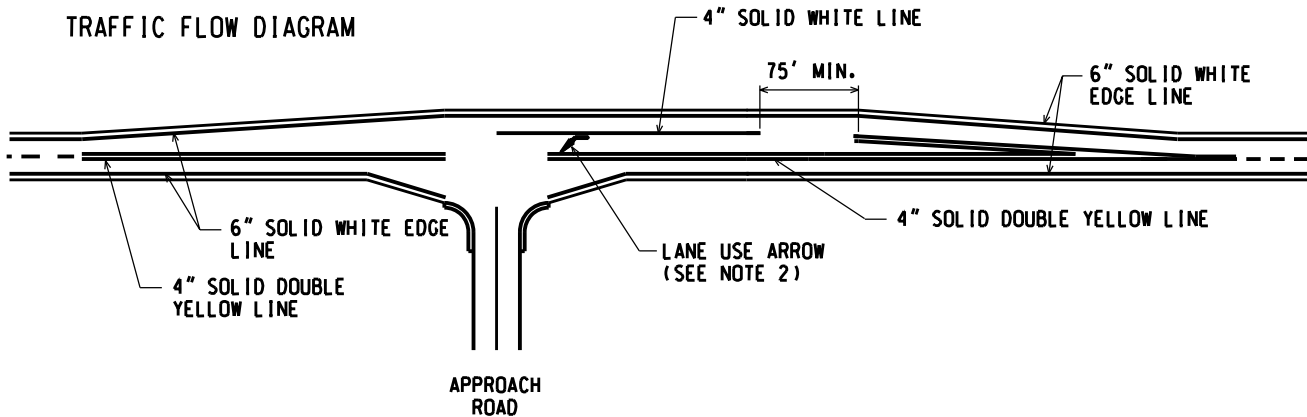
TRAFFIC FLOW DIAGRAM



## "T" INTERSECTION WITH PASSING FLARE



TRAFFIC FLOW DIAGRAM



## "T" INTERSECTION WITH MANDATORY LEFT TURN LANE

### Notes:

1. Paint intersection tapers greater than 50 ft in length.
2. Arrow markings should be installed according to PAVE-900, PAVE-935 and PAVE-940, if applicable.
3. Where the paved shoulder is 5 ft or greater in width approaching an intersection, radius the edge line to the curb/edge of pavement on both sides of the intersection. For narrower shoulders, the edge line may be simply discontinued across the intersection (blunt ends).

NOT TO SCALE

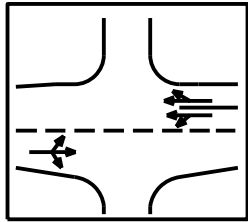
MICHIGAN DEPARTMENT OF TRANSPORTATION  
BUREAU OF DEVELOPMENT STANDARD PLAN

09/21/20  
F.H.W.A. APPROVAL

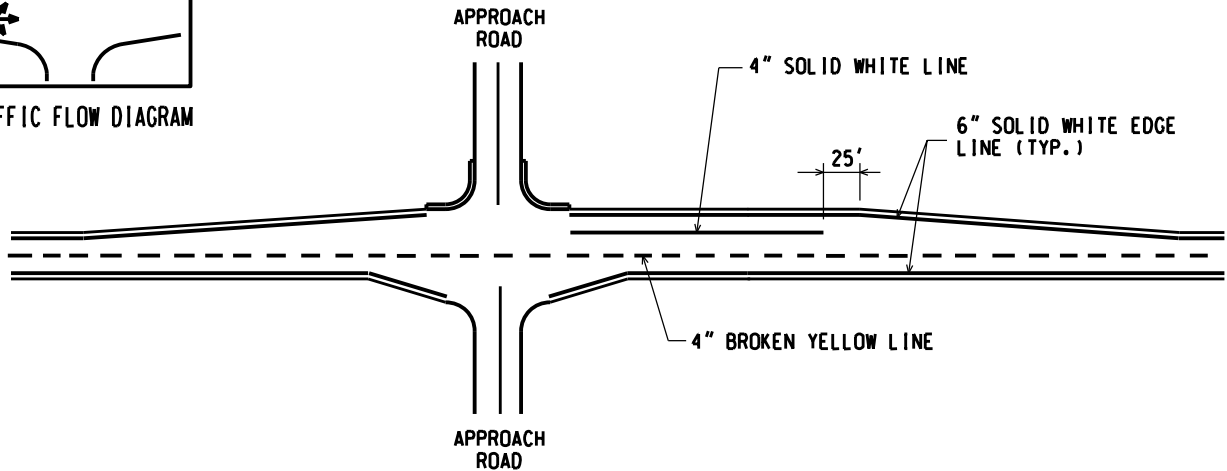
03/25/20  
PLAN DATE

PAVE-930-D

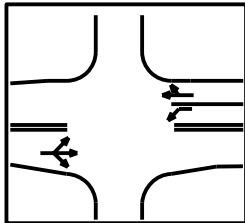
SHEET  
2 OF 8



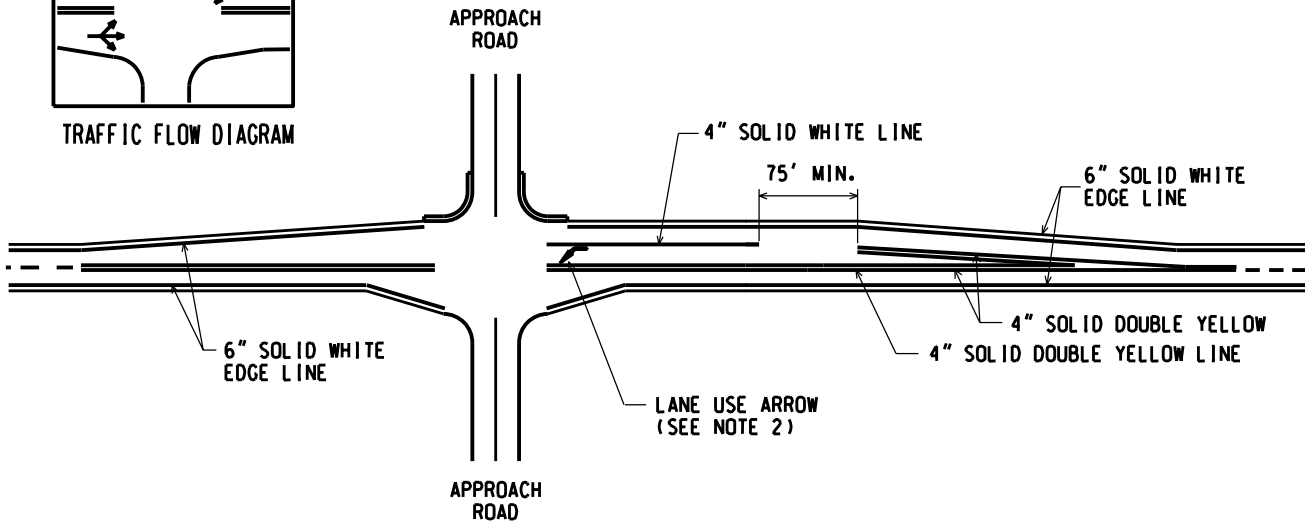
TRAFFIC FLOW DIAGRAM



## FULL INTERSECTION WITH PASSING FLARE



TRAFFIC FLOW DIAGRAM



## FULL INTERSECTION WITH MANDATORY LEFT TURN LANE

### Notes:

1. Paint intersection tapers greater than 50 ft in length.
2. Arrow markings should be installed according to PAVE-900, PAVE-935 and PAVE-940, if applicable.
3. Where the paved shoulder is 5 ft or greater in width approaching an intersection, radius the edge line to the curb/edge of pavement on both sides of the intersection. For narrower shoulders, the edge line may be simply discontinued across the intersection (blunt ends).

NOT TO SCALE

MICHIGAN DEPARTMENT OF TRANSPORTATION  
BUREAU OF DEVELOPMENT STANDARD PLAN

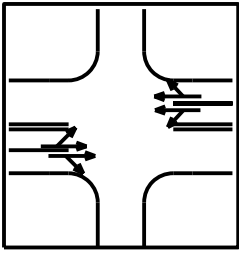
09/21/20  
F.H.W.A. APPROVAL

03/25/20  
PLAN DATE

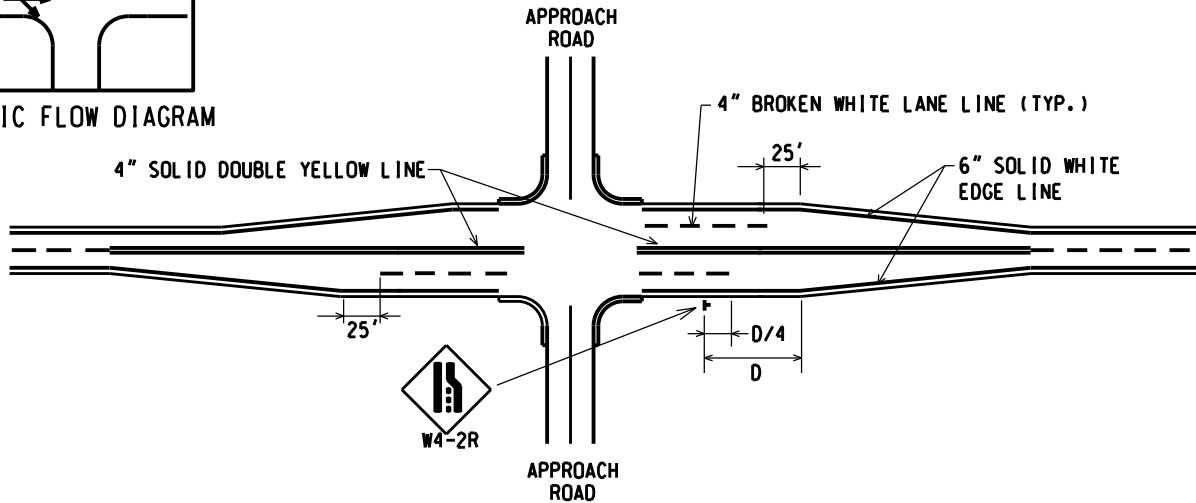
PAVE-930-D

SHEET  
3 OF 8

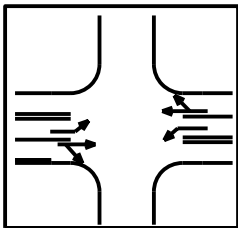
NOTE: THE ORIGINAL SIGNED COPY IS KEPT ON FILE AT THE MICHIGAN DEPARTMENT OF TRANSPORTATION.



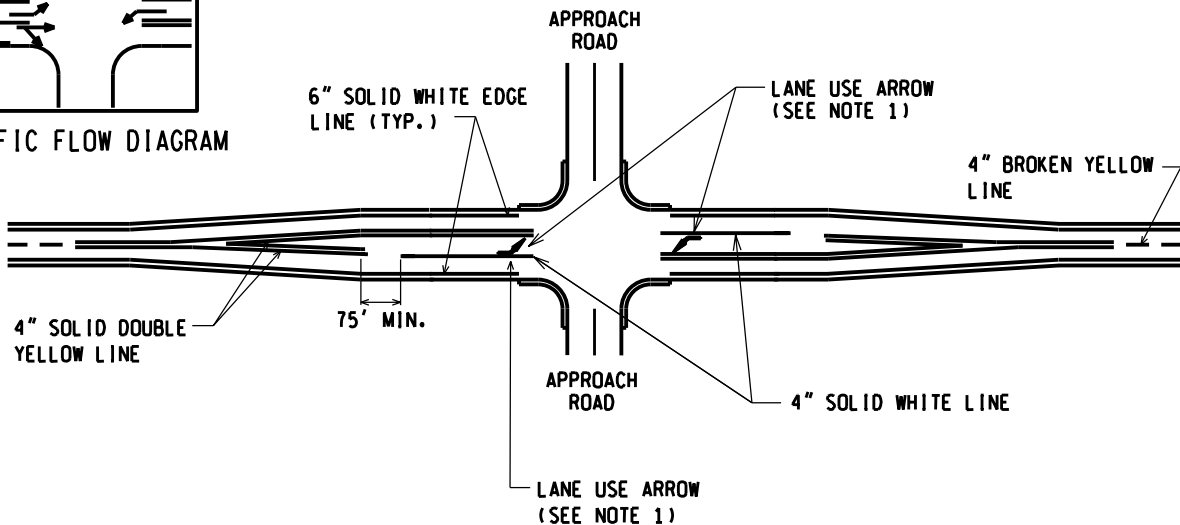
TRAFFIC FLOW DIAGRAM



**FULL INTERSECTION WITH FAR SIDE LANE DROP**



TRAFFIC FLOW DIAGRAM



**FULL INTERSECTION WITH PARTIAL FLARE WITH DEVELOPED CENTER LEFT-TURN LANE**

(MAJOR CROSS STREET)

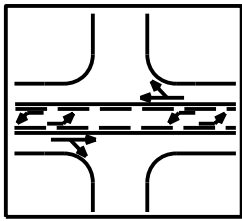
**Notes:**

1. Arrow markings should be installed according to PAVE-900, PAVE-935 and PAVE-940, if applicable.
2. Where the paved shoulder is 5 ft or greater in width approaching an intersection, radius the edge line to the curb/edge of pavement on both sides of the intersection. For narrower shoulders, the edge line may be simply discontinued across the intersection (blunt ends).

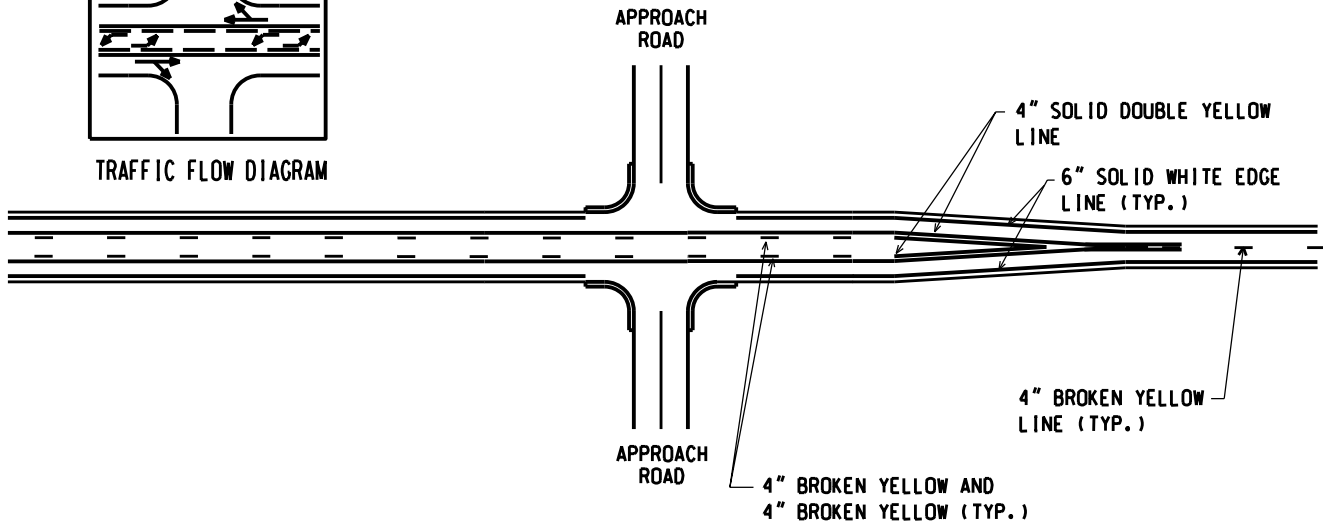
NOT TO SCALE

MICHIGAN DEPARTMENT OF TRANSPORTATION BUREAU OF DEVELOPMENT STANDARD PLAN	09/21/20 F.H.W.A. APPROVAL	03/25/20 PLAN DATE	PAVE-930-D	SHEET 4 OF 8
--	-------------------------------	-----------------------	------------	-----------------

NOTE: THE ORIGINAL SIGNED COPY IS KEPT ON FILE AT THE MICHIGAN DEPARTMENT OF TRANSPORTATION.

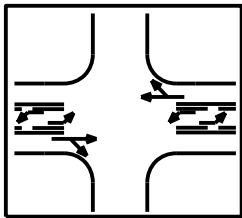


TRAFFIC FLOW DIAGRAM

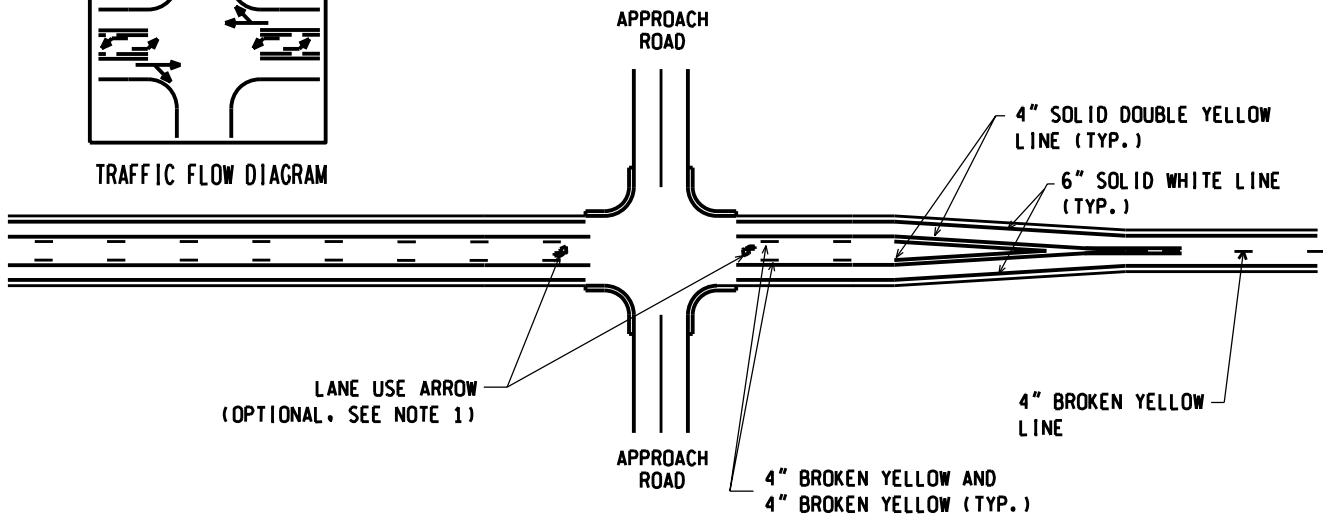


**FULL INTERSECTION PARTIAL FLARE WITH DEVELOPED CENTER LEFT-TURN LANE - CONVENTIONAL MARKINGS**

( MINOR CROSS STREET )



TRAFFIC FLOW DIAGRAM



**FULL INTERSECTION PARTIAL FLARE WITH DEVELOPED CENTER LEFT-TURN LANE - ALTERNATE MARKING**

( MINOR CROSS STREET )

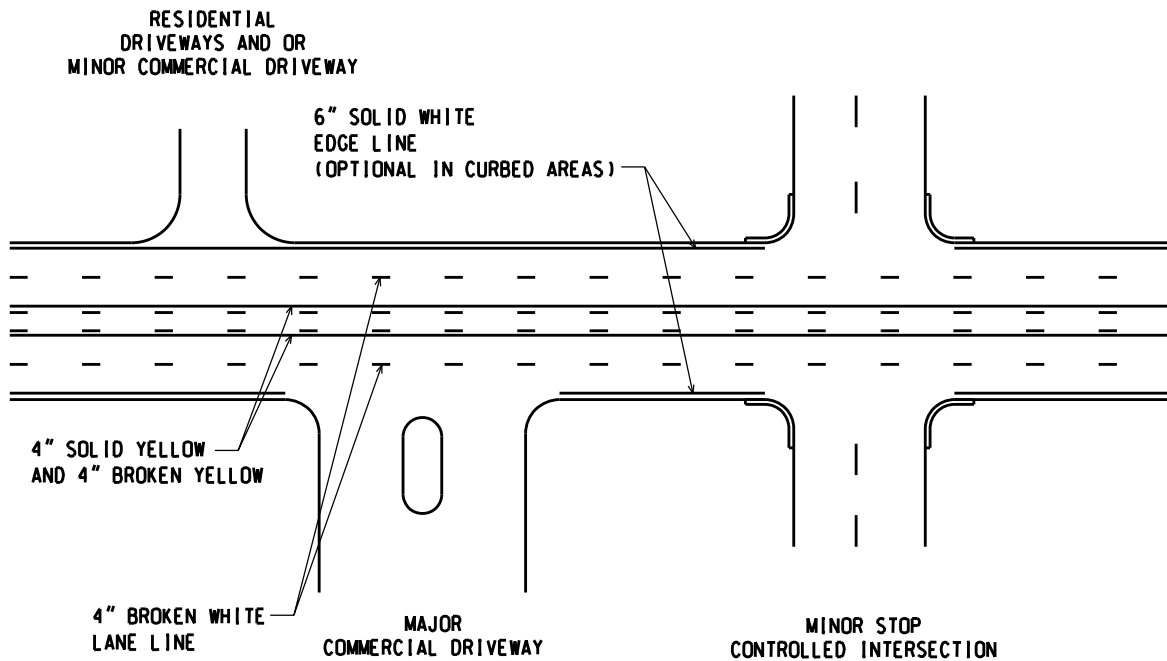
**Notes:**

1. Arrow markings should be installed according to PAVE-900, PAVE-935 and PAVE-940, if applicable.
2. Where the paved shoulder is 5 ft or greater in width approaching an intersection, radius the edge line to the curb/edge of pavement on both sides of the intersection. For narrower shoulders, the edge line may be simply discontinued across the intersection (blunt ends).

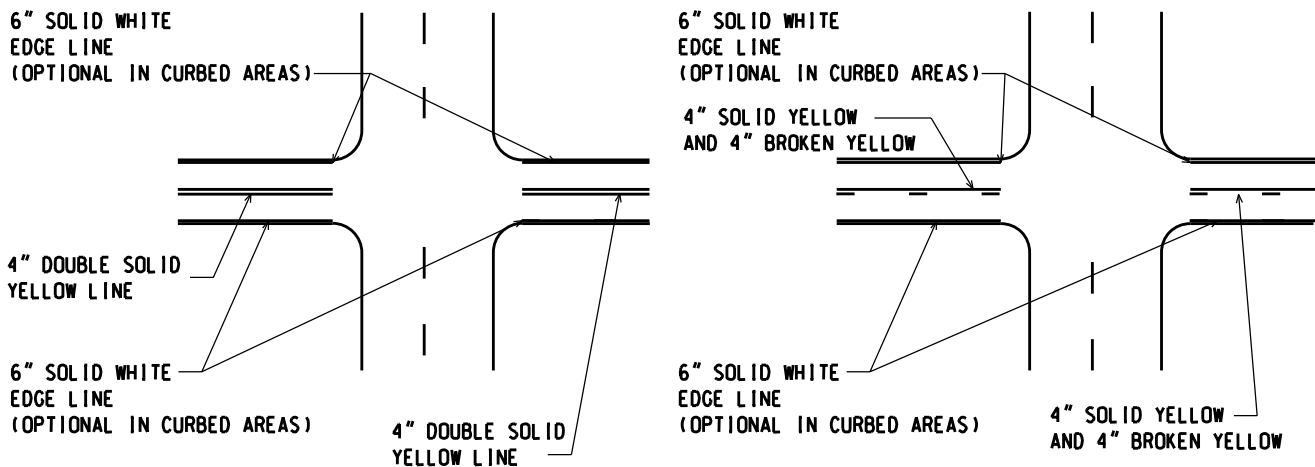
NOT TO SCALE

MICHIGAN DEPARTMENT OF TRANSPORTATION BUREAU OF DEVELOPMENT STANDARD PLAN	09/21/20 F.H.W.A. APPROVAL	03/25/20 PLAN DATE	PAVE-930-D	SHEET 5 OF 8
--	-------------------------------	-----------------------	------------	-----------------

NOTE: THE ORIGINAL SIGNED COPY IS KEPT ON FILE AT THE MICHIGAN DEPARTMENT OF TRANSPORTATION.



**STRIPING THROUGH MINOR (STOP CONTROLLED) INTERSECTIONS AND DRIVEWAYS**



**GAPPING INTERSECTIONS AT MINOR (STOP CONTROLLED) STREETS**

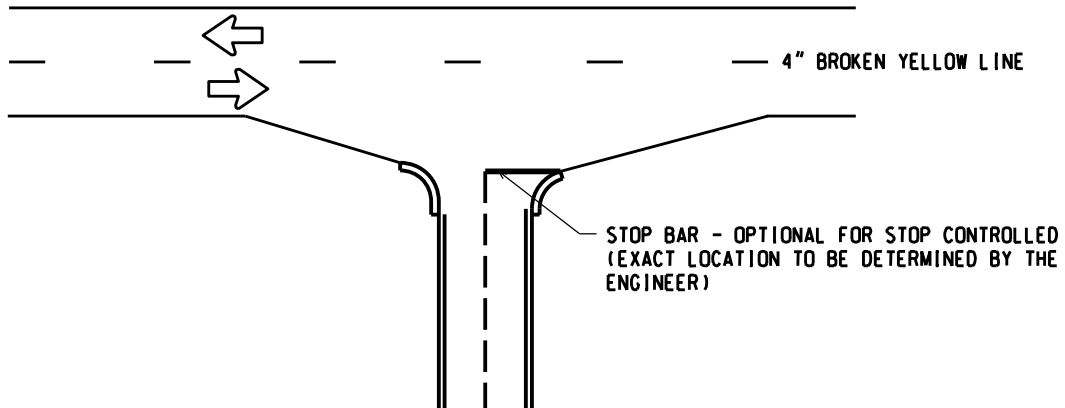
**Notes:**

1. Where the paved shoulder is 5 ft or greater in width approaching an intersection, radius the edge line to the curb/edge of pavement on both sides of the intersection. For narrower shoulders, the edge line may be simply discontinued across the intersection (blunt ends).

NOT TO SCALE

MICHIGAN DEPARTMENT OF TRANSPORTATION BUREAU OF DEVELOPMENT STANDARD PLAN	09/21/20 F.H.W.A. APPROVAL	03/25/20 PLAN DATE	PAVE-930-D	SHEET 6 OF 8
--	-------------------------------	-----------------------	------------	-----------------

NOTE: THE ORIGINAL SIGNED COPY IS KEPT ON FILE AT THE MICHIGAN DEPARTMENT OF TRANSPORTATION.



**STOP BAR DETAIL**  
 (TRUNKLINE TO TRUNKLINE "T" INTERSECTION)

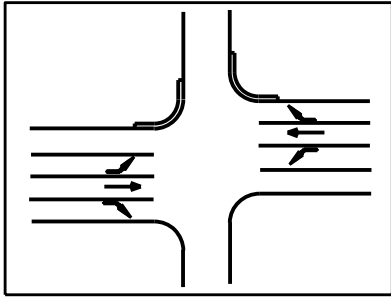
**Notes:**

1. The width of stop bars shall be 24 in.
2. Stop bars should be placed between 4 ft and 30 ft from the nearest edge of the intersecting roadway.
3. To minimize vehicle exposure time, stop bars should be located as near the intersecting roadway as practical.

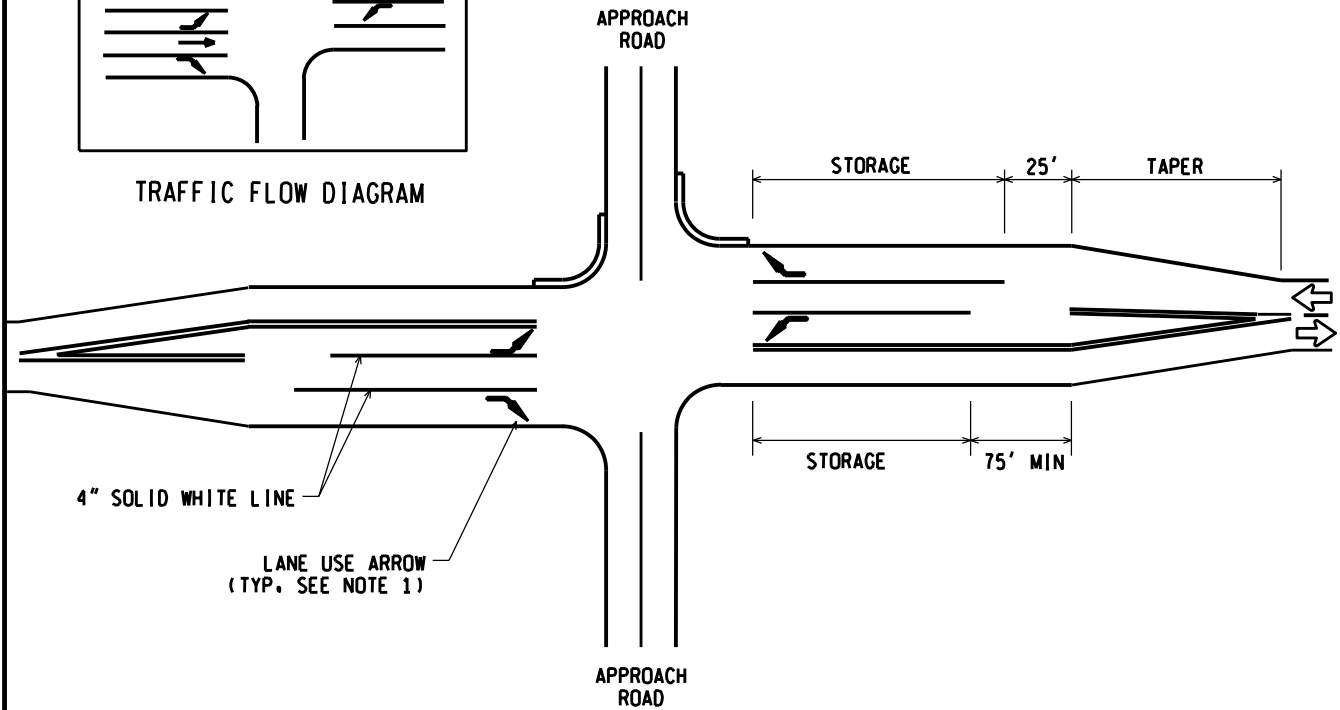
NOT TO SCALE

MICHIGAN DEPARTMENT OF TRANSPORTATION BUREAU OF DEVELOPMENT STANDARD PLAN	09/21/20 F.H.W.A. APPROVAL	03/25/20 PLAN DATE	<b>PAVE-930-D</b>	SHEET 7 OF 8
--	-------------------------------	-----------------------	-------------------	-----------------

NOTE: THE ORIGINAL SIGNED COPY IS KEPT ON FILE AT THE MICHIGAN DEPARTMENT OF TRANSPORTATION.



TRAFFIC FLOW DIAGRAM



**RIGHT AND LEFT TURN LANES ON THE SAME APPROACH**

**Note:**

1. Arrow markings should be installed according to the layouts shown on PAVE-900, PAVE-935 and PAVE-940, if applicable.
2. Refer to GEO-650 for taper lengths.

NOT TO SCALE

MICHIGAN DEPARTMENT OF TRANSPORTATION  
BUREAU OF DEVELOPMENT STANDARD PLAN

09/21/20  
F.H.W.A. APPROVAL

03/25/20  
PLAN DATE

PAVE-930-D

SHEET  
8 OF 8